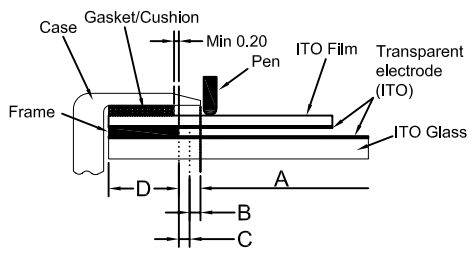




MARK	HISTORY	DATE	NAME
△ 1			

Structure and Area definition



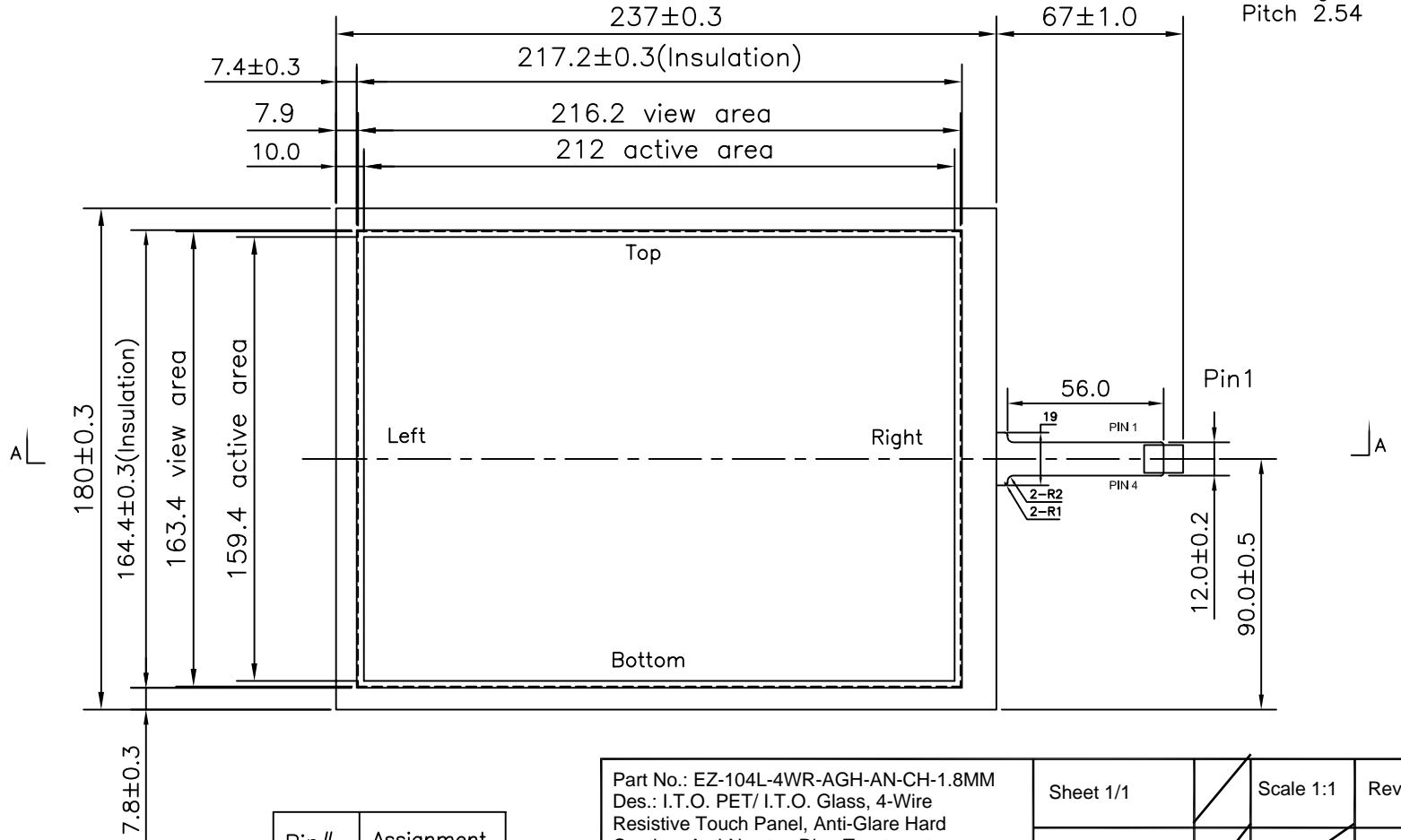
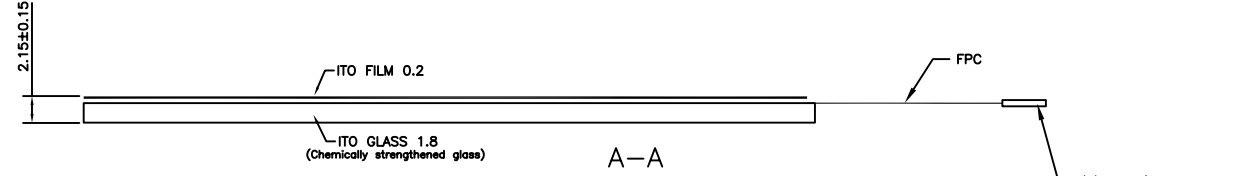
A: Active area
 The area which guarantees a touch panel operation with the following characteristics when passed.
 (1)Operation force, (2)Electric characteristics, (3)Tapping durability, (4)Pen sliding durability.

B: operation non-guaranteed area
 The area which does not guarantee a touch panel operation and its function. When this area is pressed, touch panel shows degradation of its performance and durability such as a pen sliding durability becomes about one-tenth compared with the active area (Area-a) as guaranteed area and its operation force requires about double. About 0.5 mm outside from a boundary of the active corresponds to this area.

C: Pressing prohibition area.
 The area which forbids pressing, because an excessive load is applied a transparent electrode and a serious damage is given to touch panel function by pressing.

D: Non-Active area
 The area which does not activate

- NOTES:**
1. Operation Temperature: -10°C ~ +60°C.
Storage Temperature: -20°C ~ +70°C.
 2. Life Time: >1,000,000 times.
 3. Linearity: ≤1.5%.
 4. Tail Type :FPC
 5. All Tolerance Without Marked: ±0.20



Pin#	Assignment
1	left
2	top
3	right
4	bottom

Part No.: EZ-104L-4WR-AGH-AN-CH-1.8MM Des.: I.T.O. PET/ I.T.O. Glass, 4-Wire Resistive Touch Panel, Anti-Glare Hard Coating, Anti-Newton Ring Treatment, Chemically Hardened Glass 1.8MM Thick				Sheet 1/1	Scale 1:1	Rev.: A
Design THY/WSK Date 04/16/06				Ezscreen Touch Screen Systems 4955 Gulf Freeway Houston, Texas USA 77023 Ph.: 713.926.1186, Fax: 713.926.3110 www.ezscreen.com		
Check ANV/MDG Date 04/19/06				Dims.: Metric		