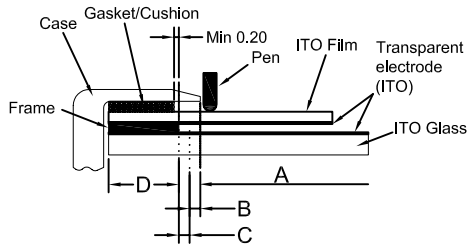
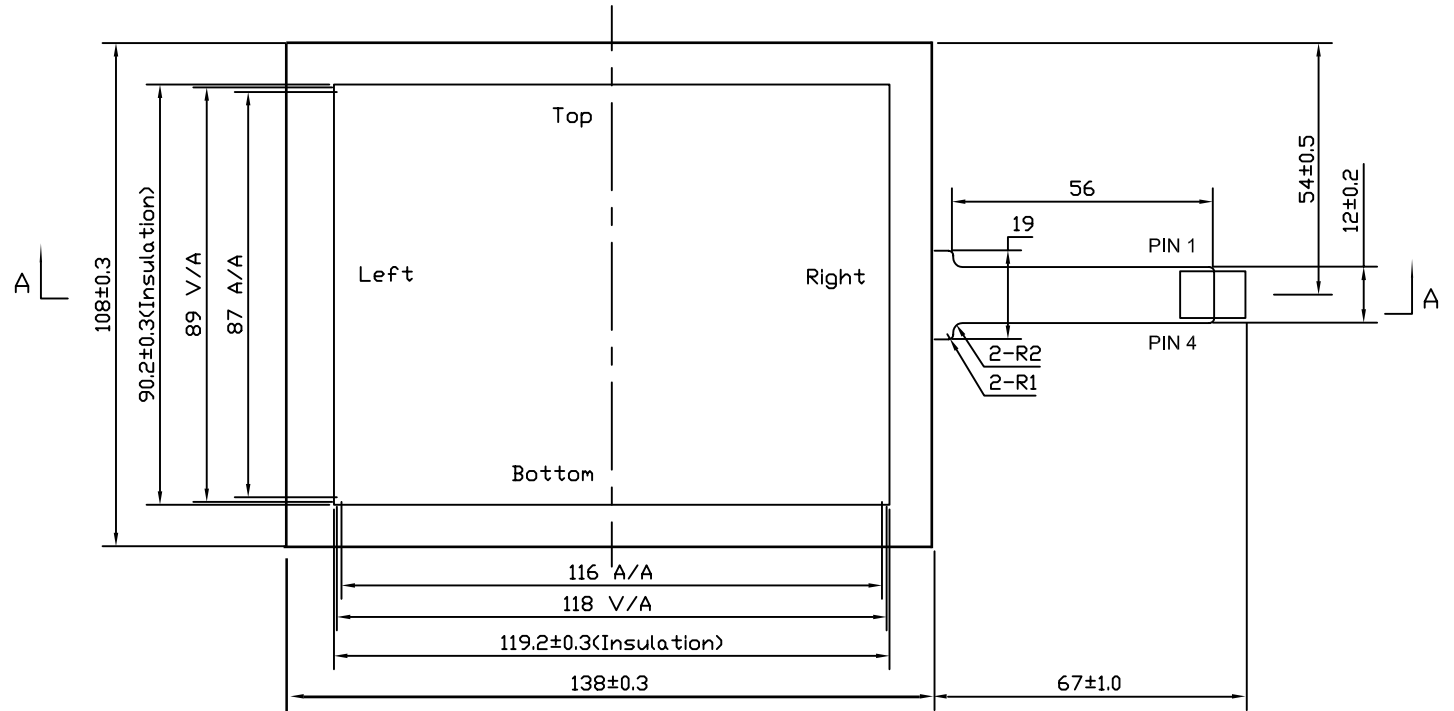
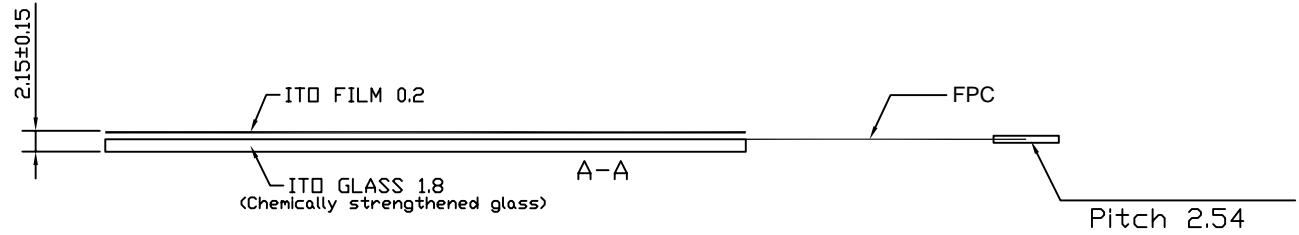


MARK	HISTORY	DATE	NAME
△			

Structure and Area definition



- A: Active area**
 The area which guarantees a touch panel operation with the following characteristics when passed.
 (1)Operation force, (2)Electric characteristics, (3)Tapping durability, (4)Pen sliding durability.
- B: operation non-guaranteed area**
 The area which does not guarantee a touch panel operation and its function. When this area is pressed, touch panel shows degradation of its performance and durability such as a pen sliding durability becomes about one-tenth compared with the active area (Area-a) as guaranteed area) and its operation force requires about double. About 0.5 mm outside from a boundary of the active corresponds to this area.
- C: Pressing prohibition area.**
 The area which forbids pressing, because an excessive load is applied a transparent electrode and a serious damage is given to touch panel function by pressing.
- D: Non-Active area**
 The area which does not activate



NOTES:

1. Operation Temperature: -10°C ~ +60°C.
Storage Temperature: -20°C ~ +70°C.
2. Life Time: >1,000,000 times.
3. Linearity: ≤1.5%.
4. Tail Type :FPC
5. All Tolerance Without Mark ±0.20

Pin#	Assignment
1	Left
2	Top
3	Right
4	Bottom

PART NO.: EZ-0585L-4WR-AGH-AN-CH-1.8MM Des.: I.T.O. PET/ I.T.O. Glass, Resistive Touch Panel, 4-Wire, Anti-Glare Hard-Coat, Anti-Newton Ring Treatment, Chemically Hardened 1.8MM Thick Glass				Sheet 1/1	Scale 1:1	Rev.: A
				Dims.: Metric		
Design	SCD	Date	04/17/06	Ezscreen Touch Screen Systems 4955 Gulf Freeway Houston, Texas USA 77023 Ph.: 713.926.1186, Fax: 713.926.3110 www.ezscreen.com		
Check	WSK/GWR	Date	04/18/06			