

Ⓢ Mold Tips: Suggested Slumping Schedules (Fahrenheit)

The following slumping schedules have been collected over years of experience at Bullseye's Research & Education studios. Note that the schedules are intended as a starting point. Many variables factor into developing an appropriate cycle. Every kiln fires differently, and different glass styles vary in viscosity.

Because no single slumping schedule will work for every project, we recommend that you visually confirm the slump during the firing. To do this, open the kiln door enough to take a quick look. Don't hold the door open for more than a few seconds.

Depending on the mold you're working with, you can begin to monitor the progress of the slump once the kiln is above 1100°F and continue to do so as the firing approaches process temperature and/or during the process soak until the slump is complete. Be sure to record your observations for future reference.

Suggested Video Lessons (subscription required):
Slumping Basics and **Working with Drop-Out Molds**

Using These Schedules

Schedules are based on observations from slumping 6mm-thick pieces in Paragon GL24 kilns. For each mold, the first segment of the firing is provided. Plug it into the provided template.

Segment	Rate (°F/hr)	Temperature	Hold
1			
2	AFAP*	900°F	1:00
3	100°F	700°F	:00
4	AFAP*	70°F	:00

* As Fast As Possible. Allow the kiln to cool at its natural rate with the door closed.



Soup Bowl

8665: 9.4" × 1.6"
(24 × 4 cm)

▶ 300°F | 1225°F | 1:15



Pasta Bowl

8909: 11.3" × 1.7" × 2"
(29 × 4 × 5 cm)

▶ 300°F | 1235°F | 1:00

8910: 13.1" × 1.9" × 2.4"
(33 × 5 × 6 cm)

▶ 300°F | 1225°F | :45



Plain Plate

8721: 14.6" × 1.2"
(37 × 3 cm)

▶ 300°F | 1200°F | :05

8722: 17.5" × 2.1"
(45 × 5 cm)

▶ 300°F | 1180°F | :05



Saturn Dessert Plate

8939: 11.3" × 0.7" × 5"
(29 × 2 × 13 cm)

▶ 300°F | 1225°F | 1:30



Round Plate

8928: 12.8" × 0.7"
(33 × 2 cm)

▶ 300°F | 1225°F | 1:30



Classic

8748: 5.9" × 1"
(15 × 3 cm)

▶ 300°F | 1225°F | 1:30

8749: 6.1" × 0.6"
(16 × 2 cm)

▶ 300°F | 1225°F | 1:30

8747: 8.5" × 0.9"
(22 × 2 cm)

▶ 300°F | 1225°F | :45



Classic

8723: 12.1" × 3"
(31 × 8 cm)

▶ 300°F | 1225°F | :45

8724: 15.7" × 3.3"
(40 × 8 cm)

▶ 300°F | 1225°F | :30



Cone Bowl

8974: 5.25" × 1.25"
(133 × 32 mm)

8943: 7.4" × 2.2"
(19 × 6 cm)

See Mold Tips: Cone Bowls



Large Cone Bowl

8975: 11.5" × 3.4"
(29 × 9 cm)

See Mold Tips: Cone Bowls



Big Bowl

8973: 12.5" × 3.7"
(32 × 9 cm)

See Mold Tips: Big Bowl

Note: The measurements given here are for the outer dimensions of the molds. This is to help you determine whether a given mold will fit in your kiln. Since they are handmade, individual molds will vary in size. Never cut glass to fit until you have measured your mold.

Mold Tips: Suggested Slumping Schedules (continued)



Round Tray

8781: 5.4" x 1"
(14 x 2.5 cm)
▶ 300°F | 1225°F | 1:00

8782: 9" x 1"
(23 x 2.5 cm)
▶ 300°F | 1225°F | 1:00

8783: 11.2" x 1"
(29 x 2.5 cm)
▶ 300°F | 1225°F | :45

8760: 13.2" x 1"
(33.5 x 2.5 cm)
▶ 300°F | 1225°F | :45



Simple Rimless Dish

8772: 9" x 1.5"
(23 x 4 cm)
▶ 300°F | 1210°F | :20



Round Slumper

8630: 7.5" x 1"
(19 x 3 cm)
▶ 300°F | 1200°F | :05

8629: 11.8" x 1.6"
(30 x 4 cm)
▶ 300°F | 1190°F | :05



Large Round Slumper

8628: 14.8" x 2.6"
(38 x 7 cm)
▶ 300°F | 1225°F | :20



Seder Plate

8959: 12.3" x 1.4"
(31 x 4 cm)
▶ 300°F | 1250°F | 1:15



Oval

8744: 15.4" x 9.8" x 1.7"
(39 x 25 x 4 cm)
▶ 300°F | 1225°F | :40



Oval Dish

8536: 8.1" x 5.2" x 1.3"
(21 x 13 x 3 cm)
▶ 300°F | 1220°F | :20

8455: 11.3" x 7.4" x 1.5"
(29 x 19 x 4 cm)
▶ 300°F | 1225°F | :20



Short Oval

8919: 11" x 4.4" x 1.2"
(28 x 11 x 3 cm)
▶ 300°F | 1225°F | :10

8952: 14.8" x 6.3" x 1.7"
(38 x 16 x 4 cm)
▶ 300°F | 1215°F | :20



Long Oval

8920: 10.9" x 4.5" x 0.6"
(28 x 11 x 2 cm)
▶ 300°F | 1215°F | :20

8951: 18.1" x 6.7" x 1.3"
(46 x 17 x 3 cm)
▶ 300°F | 1225°F | :10



Swirl

8788: 11.9" x 2.1"
(30 x 5 cm)
▶ 300°F | 1225°F | :45



Ball Surface

8746: 5.8" x 1.7"
(15 x 4 cm)
▶ 200°F | 1220°F | :20

8736: 7.8" x 1.2"
(20 x 3 cm)
▶ 300°F | 1215°F | :05

8735: 9.4" x 2"
(24 x 5 cm)
▶ 300°F | 1200°F | :15

8734: 11.4" x 3"
(29 x 8 cm)
▶ 300°F | 1180°F | :15



Ball Surface

8733: 14.8" x 2.1"
(38 x 5 cm)
▶ 300°F | 1180°F | :10

8738: 16.5" x 3.3"
(42 x 9 cm)
▶ 250°F | 1180°F | :05

8737: 19.3" x 3.6"
(49 x 9 cm)
▶ 200°F | 1160°F | :20

8745: 21.7" x 4.2"
(55 x 11 cm)
(discontinued)
▶ 200°F | 1170°F | :05



Deep Form Step Two

8990: 15" x 7.3"
(38 x 19 cm)
See Mold Tips: Deep Form



Deep Form Step Three

8991: 12.6" x 8.2"
(32 x 21 cm)
See Mold Tips: Deep Form



Bowl

8651: 15.6" x 2.4"
(40 x 6 cm)
▶ 300°F | 1200°F | :20

8652: 16.1" x 3.4"
(41 x 9 cm)
▶ 300°F | 1180°F | :15



Snack Tray

8961: 9.8" x 6.7" x 1.2"
(25 x 17 x 3 cm)
▶ 300°F | 1250°F | 1:30



Pyramid Mold

8948: 6.7" x 6.7" x 4.7"
(17 x 17 x 12 cm)
See Mold Tips: Pyramid Mold



Heart Mold

8976: 3.9" x 3.5"
(10 x 9 cm)
See Mold Tips: Heart Mold

Note: The measurements given here are for the outer dimensions of the molds. This is to help you determine whether a given mold will fit in your kiln. Since they are handmade, individual molds will vary in size. Never cut glass to fit until you have measured your mold.

Mold Tips: Suggested Slumping Schedules (continued)



Mini Soft Edged Plate

8963: 6.1" x 6.1" x 0.8"
(16 x 16 x 2 cm)
▶ 300°F | 1250°F | 2:00



Small Dish

8926: 8.5" x 8.5" x 1.3"
(22 x 22 x 3 cm)
▶ 300°F | 1225°F | 2:15



Soft Edge Platter

8985: 9.1" x 9.1" x 0.9"
(23 x 23 x 2 cm)
▶ 300°F | 1225°F | 1:20



Retro Party Bowl

8936: 16.9" x 16.9" x 3.9"
(57 x 18 x 6 cm)
▶ 300°F | 1225°F | :35



Yin-Yang Plate

8341: 11.4" x 11.4" x 0.9"
(29 x 29 x 2 cm)
▶ 250°F | 1265°F | 1:30



One-Square Dish

8934: 3.5" x 3.5" x 0.9"
(9 x 9 x 2 cm)
▶ 300°F | 1250°F | 1:15



Square Bowl, Simple Curve

8647: 12" x 12" x 2.5"
(31 x 31 x 6 cm)
▶ 300°F | 1225°F | 1:00



Square Bowl, Double Curve

8648: 11.8" x 11.8" x 2.1"
(30 x 30 x 5 cm)
▶ 300°F | 1225°F | 1:00



Four-Square Dish

8935: 6.7" x 6.7" x 0.9"
(17 x 17 x 2 cm)
▶ 300°F | 1240°F | 1:00



Soft Edge Four Square Platter

8342: 14" x 14" x 1.2"
(36 x 36 x 3 cm)
▶ 300°F | 1225°F | 2:20



Square Slumper A

8636: 4.5" x 4.5" x 0.8"
(12 x 12 x 2 cm)
▶ 300°F | 1180°F | :05



Square Slumper B

8998: 3.4" x 3.4" x 0.9"
(9 x 9 x 2 cm)
▶ 300°F | 1200°F | :10



Square Plate

8901: 3.3" x 3.3" x 0.8"
(8 x 8 x 2 cm)
▶ 300°F | 1250°F | 1:30



Square Platter

8638: 9.6" x 9.6" x 0.8"
(25 x 25 x 2 cm)
▶ 300°F | 1250°F | 1:30



Square Nesting Plate

8757: 5.5" x 5.5" x 0.9"
(14 x 14 x 2 cm)
▶ 300°F | 1225°F | :30

8635: 8.5" x 8.5" x 1.5"
(22 x 22 x 4 cm)
▶ 300°F | 1180°F | :05

8997: 5.2" x 5.2" x 1.3"
(13 x 13 x 3 cm)
▶ 300°F | 1200°F | :10

8900: 5.3" x 5.3" x 1"
(13 x 13 x 3 cm)
▶ 300°F | 1240°F | 1:30

8641: 11.9" x 11.9" x 0.8"
(30 x 30 x 2 cm)
▶ 250°F | 1240°F | 1:15

8758: 7" x 7" x 0.8"
(18 x 18 x 2 cm)
▶ 300°F | 1225°F | :20

8634: 10.1" x 10.1" x 1.9"
(26 x 26 x 5 cm)
▶ 300°F | 1180°F | :05

8996: 6.1" x 6.1" x 1.1"
(16 x 16 x 3 cm)
▶ 300°F | 1200°F | :10

8899: 6.3" x 6.3" x 0.9"
(16 x 16 x 2 cm)
▶ 300°F | 1225°F | 1:30

8646: 14.8" x 14.8" x 0.8"
(38 x 38 x 2 cm)
(discontinued)
▶ 250°F | 1225°F | 1:30

8759: 8.6" x 8.6" x 1"
(22 x 22 x 3 cm)
▶ 300°F | 1225°F | :20

8637: 12" x 12" x 2.2"
(30 x 30 x 6 cm)
▶ 300°F | 1180°F | :05

8995: 6.8" x 6.8" x 1.6"
(17 x 17 x 4 cm)
▶ 300°F | 1200°F | :10

8739: 15.9" x 15.9" x 2.8"
(40 x 40 x 7 cm)
▶ 300°F | 1160°F | :05

8938: 20.9" x 20.9" x 3.7"
(53 x 53 x 9 cm)
(discontinued)
▶ 150°F | 1160°F | :05



Soap Dish

8981: 6" x 4" x 0.8"
(15 x 10 x 2 cm)
▶ 300°F | 1215°F | 1:00



Circle in Square

8453: 5.9" x 5.9" x 1.6"
(15 x 15 x 4 cm)
▶ 300°F | 1250°F | 1:30



Flat Slumper

8972: 10.6" x 10.6" x 1.1"
(27 x 27 x 3 cm)
▶ 300°F | 1170°F | :05



Very Gentle Curve

8982: 18" x 18" x 2.3"
(46 x 46 x 6 cm)
▶ 300°F | 1160°F | :05

Note: The measurements given here are for the outer dimensions of the molds. This is to help you determine whether a given mold will fit in your kiln. Since they are handmade, individual molds will vary in size. Never cut glass to fit until you have measured your mold.

Mold Tips: Suggested Slumping Schedules (continued)



Small Rectangle

8945: 9.5" x 5.4" x 1.5"
(24 x 14 x 4 cm)
▶ 300°F | 1250°F | 1:15



Medium Rectangle

8949: 11.4" x 9.1" x 1.3"
(29 x 23 x 3 cm)
▶ 300°F | 1225°F | :45



Party Platter

8539: 19.8" x 12.8" x 1.8"
(50 x 33 x 5 cm)
▶ 300°F | 1225°F | 1:45



One Candle Bridge

8903: 7.2" x 5.1" x 2"
(18 x 13 x 5 cm)
▶ 300°F | 1250°F | 1:30



Four Candle Bridge

8902: 12.4" x 5.7" x 1.6"
(32 x 15 x 4 cm)
▶ 250°F | 1240°F | 1:45



Simple Curve

8642: 15.6" x 13.1" x 2.8"
(40 x 33 x 7 cm)
▶ 300°F | 1170°F | :05



Serving Tray

8947: 14.8" x 9" x 0.9"
(38 x 23 x 2 cm)
▶ 250°F | 1225°F | 1:20



Concave Dish

8933: 13.9" x 9.5" x 1.7"
(35 x 24 x 4 cm)
▶ 300°F | 1225°F | :45



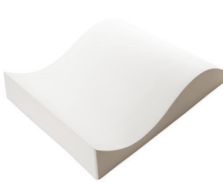
Convex Dish

8932: 13.5" x 9.7" x 1.4"
(34 x 25 x 4 cm)
▶ 300°F | 1225°F | :45



Soft Edge Platter Long

8962: 14" x 9.4" x 0.9"
(36 x 24 x 2 cm)
▶ 300°F | 1225°F | 1:00



Double Curve

8960: 9.4" x 8.7" x 1.7"
(24 x 22 x 4 cm)
▶ 300°F | 1220°F | :10
8643: 15.9" x 13.6" x 2.9"
(40 x 35 x 7 cm)
▶ 300°F | 1215°F | :10



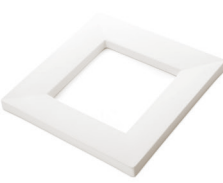
Lamp Bender Conic

8740: 12.2" x 10.4" x 3.8"
(31 x 27 x 10 cm)
▶ 300°F | 1200°F | :15



Lamp Bender

8964: 6" x 4.9" x 2.1"
(15 x 12 x 5 cm)
▶ 300°F | 1200°F | :30
8725: 10.1" x 8.5" x 3.7"
(26 x 22 x 10 cm)
▶ 300°F | 1200°F | :20



Square Drop Out

8957: 9.5" x 9.5" x 0.7"
(24 x 24 x 2 cm); Inside
5.4" x 5.4" (14 x 14 cm)
▶ 300°F | 1250°F | 1:30*



Rectangular Drop Out

8923: 15.4" x 8.7" x 0.9"
(39 x 22 x 2 cm); Inside 10.2"
x 3.7" (26 x 9 cm)
▶ 300°F | 1250°F | 2:00*



Channel Plate

8456: 12.6" x 4.1" x 1.4"
(32 x 10 x 4 cm)
▶ 200°F | 1200°F | :25
8944: 17.1" x 4.8" x 1.6"
(44 x 12 x 4 cm)
▶ 200°F | 1200°F | :15
8257: 22.6" x 6.9" x 2.4"
(57 x 18 x 6 cm)
▶ 200°F | 1200°F | :10



Rectangular Slumper

8924: 12.2" x 7.4" x 1.7"
(31 x 19 x 4 cm)
▶ 300°F | 1200°F | :05
8925: 14.8" x 7.4" x 1.7"
(38 x 19 x 4 cm)
▶ 300°F | 1200°F | :05
8929: 16.5" x 11.9" x 2"
(42 x 30 x 5 cm)
▶ 300°F | 1170°F | :05



Oval in Rectangle

8454: 9.1" x 6.1" x 1.5"
(23 x 16 x 4 cm)
▶ 300°F | 1250°F | 1:30



Ellipse Drop Out

8955: 17.7" x 10.8" x 0.9"
(45 x 28 x 2 cm); Inside 13.6"
x 6.9" (35 x 18 cm)
▶ 300°F | 1250°F | 1:30*

* This schedule is for making a shallow plate. The mold is placed directly on the kiln shelf—not elevated.



Drop Out Ring

8633: 7.1" x 0.4" (18 x 1 cm);
Inside 3" (8 cm)
▶ 300°F | 1250°F | 1:30*
8632: 8.9" x 0.4" (23 x 1 cm);
Inside 4.9" (13 cm)
▶ 300°F | 1250°F | 1:30*
8631: 10.8" x 0.5" (28 x 1 cm);
Inside 6.7" (17 cm)
▶ 300°F | 1250°F | 1:30*
8756: 13.3" x 0.5" (34 x 1 cm);
Inside 7.5" (19 cm)
▶ 300°F | 1250°F | 1:30*

Note: The measurements given here are for the outer dimensions of the molds. This is to help you determine whether a given mold will fit in your kiln. Since they are handmade, individual molds will vary in size. Never cut glass to fit until you have measured your mold.