

EP中力

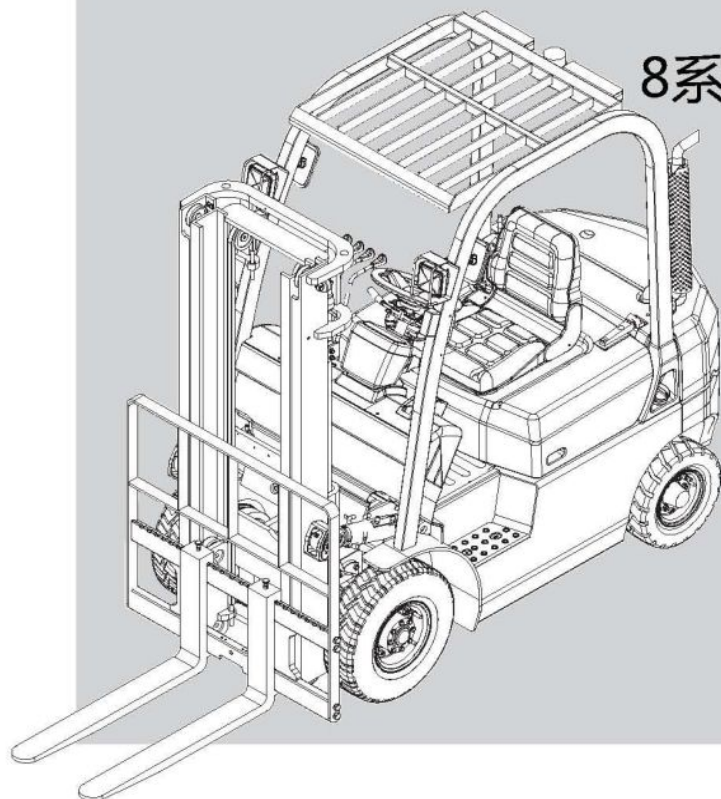
T8 Series CPC(Q)D15/18

Engine Powered Fork Lift Truck

Parts Manual

8系列1.5/1.8t柴油机(汽油机)内燃叉车

零件目录



CE

CE CERTIFICATE

1、前言	
2、整车部件系统 GENERAL.....	5
3、传动装置（液力式）TRANSMISSION ASS'Y.....	6
4、盖和微动阀、电液控制 INCHING & ELECTRIC-HYDRAULIC VALVE.....	9
5、供油泵 CHARGING PUMP.....	10
6、液力离合器 HYDRAULIC CLUTCH.....	11
7、差速器总成 DIFFERENTIAL.....	12
8、驱动桥 DRIVE AXLE.....	13
9、驱动轮（单胎） DRIVE WHEEL（SINGLE TYRE）.....	15
10、驱动轮（双胎） DRIVE WHEEL（DOUBLE TYRE）.....	16
11、制动器总成 WHEEL BRAKE.....	17
12、制动器总成（FD20 25T） WHEEL BRAKE（FD20 25T）.....	18
13、发动机 ENGINE.....	19
14、冷却系统 COOLING SYSTEM.....	20
15、排气系统 EXHAUST SYSTEM.....	21
16、空滤器安装 AIR CLEANER ASS'Y MOUNT.....	22
17、空滤器总成 AIR CLEANER ASS'Y.....	23
18、燃油系统 FUEL SYSTEM.....	24
19、转向桥 STEERING SYSEM.....	25
20、转向轮 STEERING WHEEL.....	27
21、转向油缸 STEERING CYLINDER.....	28
22、转向系统 STEERING SYSEM.....	29
23、转向管路 STEERING PIPING.....	30
24、车架和平衡重 Parking brake unit.....	31
25、地板附件、座椅 FLOOR、SEAT.....	32
26、内燃机罩安装 BONNET MOUNT.....	33
27、停车制动 BRAKE LEVEL.....	34
28、行车制动与微动操纵 BRAKE —INCHING CONTROL.....	35
29、制动总泵安装 MASTER CYLINDER MOUNT.....	37
30、制动总泵 MASTER CYLINDER.....	38
31、油门踏板 ACCELERATOR PEDAL.....	39
32、操纵杆总成（二联） VALVE CONTROL LINKAGE（TWO-THROW）.....	40
33、操纵杆总成（三联） VALVE CONTROL LINKAGE（THREE-THROW）.....	41
34、操纵杆总成（四联） VALVE CONTROL LINKAGE（FOUR-THROW）.....	42
35、液压系统(4TNE92) HYDRAULIC SYSTEM(4TNE92).....	43
36、液压系统 HYDRAULIC SYSTEM.....	44
37、液压系统(Mazda F2.0) HYDRAULIC SYSTEM(Mazda F2.0).....	45
38、万向传动轴(Mazda F2.0) Shaft - Hydraulic pump(Mazda F2.0).....	47
39、变矩器油冷却系统 TOR-CON OIL COOLING SYSTEM.....	48
40、门架（2W） MAST（2W）.....	49
41、门架（2F） MAST（2F）.....	51
42、门架（3F） MAST（3F）.....	53
43、门架管路系统(2W) HYDRAULIC SYSTEM MAST(2W).....	56

44、门架管路系统(2F) HYDRAULIC SYSTEM MAST(2F)	57
45、门架管路系统(3F) HYDRAULIC SYSTEM MAST(3F).....	58
46、起升油缸(2W) LIFT CYLINDER(2W)	59
47、自由起升油缸(2F/3F) FREE LIFT CYLINDER(2F/3F).....	61
48、起升油缸(2F) LIFT CYLINDER(2F)	63
49、起升油缸安装 LIFT CYLINDER MOUNT.....	64
50、倾斜油缸(2W/2F) TILT CYLINDER(2W/2F)	65
51、倾斜油缸(3F) TILT CYLINDER(3F)	66
52、滑架(2W) LIFT CARRIAGE(2W)	67
53、滑架(2F) LIFT CARRIAGE(2F)	68
54、滑架(3F) LIFT CARRIAGE(3F)	69
55、电气系统 ELECTRIC SYSTEM.....	70
56、前照灯 HEAD LAMP ASSY	74
57、三色后组合灯 REAR COMBINATION LAMP	75
58、前小灯 FRONT LAMP	76
59、仪表总成 COMBINATION METER.....	77
60、标牌 Label.....	78

前言

1、本“零件目录”汇集了1.5t—1.8t T8 系列各种叉车的零部件；

This catalogue collects all the parts (components) in series of 1.5-1.8 ton T8 forklift trucks；

2、订购零件时，须写明所用叉车的型号、出厂编号、门架高度、所需零部件物料码、名称及订购数量；

When you order the parts (components), the truck's Model, factory number ,mast height, code Number of drawing, name and quantity should be given when ordering the parts or the components；

3、维修更换零部件时，为确保质量，请使用本公司零部件；

It is recommended to use the parts and components made by us for ideal the service and maintenance；

4、为提高质量，本厂将对某些零部件进行改进,对改进部分在本目录中不能同时一一修改,请用户谅解，欲了解详细情况可与本公司销售部门及配件部门联系

We reserve the right of the change of the truck in construction for improving our products without notice. For the details of changes, please consult with sales department of Hangzhou Forklift Truck Co., Ltd.

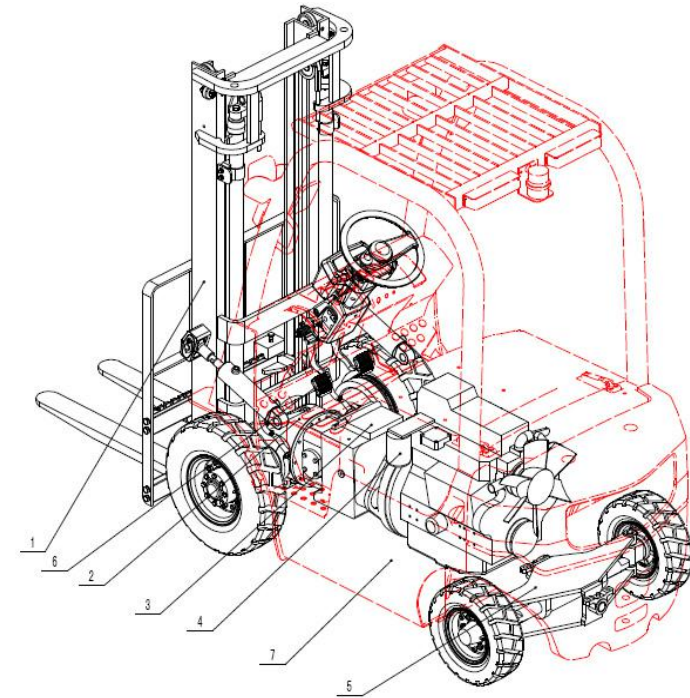
序号	零件编号	零部件名称	数量	备注	供方零件号	备注2
Item No	Part No	Description	QTY	Remark	Supplier Part No	Remark2
1	58A00-15T01	MAST (2W)	1	门架 (2W)		
	58F00-15T01	MAST (2F)	1	门架 (2F)		
	58S00-15T01	MAST (3F)	1	门架 (3F)		
2	40200-15T11	DRIVE AXLE	1	驱动桥		
3	18600-15T11	Transmission case	1	液力变速箱	CPCD15-18T8	4TNE92
	M18600-15T11	Transmission case	1	液力变速箱	CPQD15-18T8	F2.0
4	10100-15T11	YANMAR Engine	1	YANMAR柴油机	CPCD15-18T8	4TNE92
	M10100-15T11	MAZDA Engine	1	MAZDA汽油机	CPQD15-18T8	F2.0
5	403A0-15T11	STEERING AXLE	1	转向桥		
6	46500-15T11	Brake & Inching	1	制动与微动操纵		
7	50001-15T11	Frame and Counter weight	1	车架和平衡重	CPC(Q)15T8	
	50001-18T11	Frame and Counter weight	1	车架和平衡重	CPC(Q)D18T8	

整车部件系统

图01

GENERAL

Fig 01



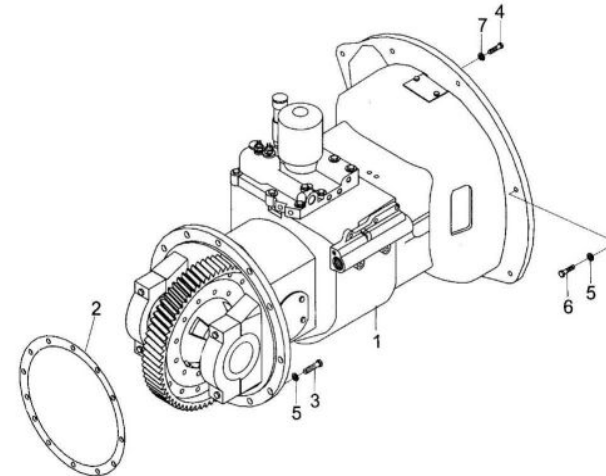
序号	图号	零部件名称	数量	备注	供方零件号	备注2
Item No	Part No	Description	QTY	Remark	Supplier Part No	Remark2
1	18600-15T11	Transmission case 液力变速箱	1	CPCD15-18T8		4TNE92
	M18600-15T11	Transmission case 液力变速箱	1	CPQD15-18T8	YQXD30C2	F2.0
2	20001-15T11	Packing 垫片	1			4TNE92
	M20001-15T11	Packing 垫片	1			F2.0
3	05785-10350	Bolt 螺栓M10×1.25×35	10			
4	05782-08250	Bolt 螺栓M8×25	6			
5	00093-1001A	Washer,lock 垫圈10	19			
6	05785-10500	Bolt 螺栓M10×35	9			
7	00093-0801A	Washer,lock 垫圈8	6			

传动装置（液力式）

TRANSMISSION ASS'Y

图02

Fig 02



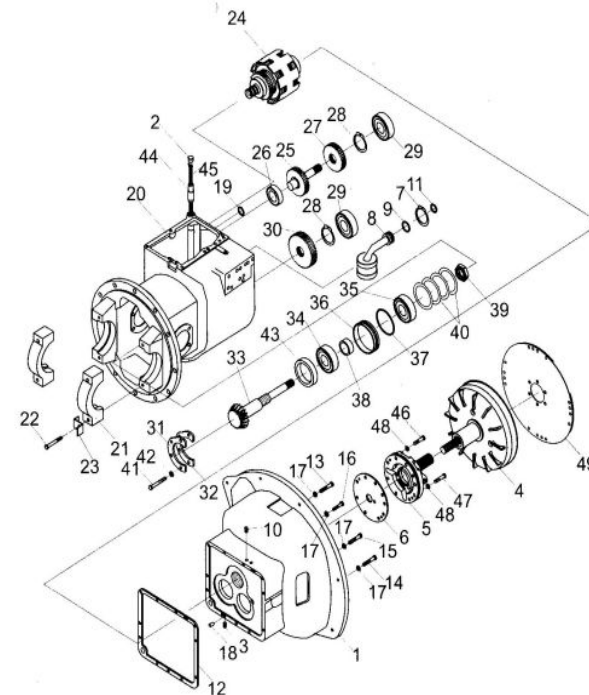
序号	图号	零部件名称	数量	备注	供方零件号	备注2
Item No	Part No	Description	QTY	Remark	Supplier Part No	Remark2
1	18601-15T11	Case,tor-con	1	4TNE92	YQX30H-0210	
	M18601-15T11	Case,tor-con	1	F2	YQX30M-0210	
2	18602-30T11	Cup	1		YQX30-0210	
3	18603-15T11	Plug	1		YQX30-0400	
4	18604-30T11	Tor-con ass'y	1		JB/ZQ4446-86 R1/4	
5	18605-30T11	Charging pump ass'y	1			
6	18606-30T11	Gasket	1	☆		18600-15T11-KIT
7	08941-3500B	Snap ring	1		YQX30-3000	
8	18607-30T11	Strainer	1		YQX30-0010	
9	01235-35310	O-ring	1	☆	GB894.1-86-35	
10	18603-30T11	Plug	1		YQX30-0500	
11	01235-28350	O-ring	1	☆	GB1235-76 35x3.1	
12	18609-30T11	Gasket	1	☆	JB/ZQ4446-86 R1/2	
13	05782-1075A	Bolt	1		GB1235-76 28x3.5	
14	05782-1055A	Bolt	1		YQX30-0009	
15	05782-1050A	Bolt	1		GB5783-86 M10x30 8.8	
16	05782-1030A	Bolt	3		GB5783-86 M10x50 8.8	
17	00093-1000A	Washer,lock	6		GB5783-86 M10x55 8.8	
18	00119-1220B	Pin	4		GB5783-86 M10x75 8.8	
19	01235-15240	O-ring	1	☆	GB93-87-10	
20	18610-15T11	Case,mission	1		GB119-86- B12x20	
21	18611-15T11	Cap,bearing	2		GB1235-76 15x2.4	
22	18612-30T11	Bolt	4		YQX30-0103	
23	18613-15T11	Plate,lock	4			
24	186C0-15T11	Clutch,hydraulic	1			
25	18615-30T11	Shaft,idler	1			
26	00276-62060	Bearing	1		轴承6206-2RS	
27	18616-30T11	Gear,idler	1			
28	00893-2400A	Snap ring	1			
29	00276-62070	Bearing	1		轴承6207	

传动装置（液力式）

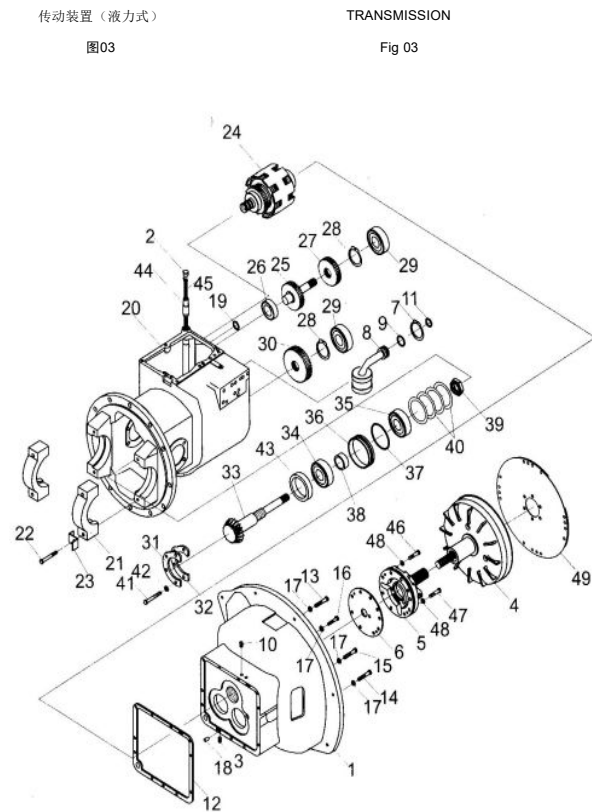
TRANSMISSION

图03

Fig 03



序号 Item No	图号 Part No	零部件名称 Description	数量 QTY	备注 Remark	供方零件号 Supplier Part No	备注2 Remark2
30	18617-30T11	Gear,output 输出齿轮	1		YQX30-0102	
31	18618-30T11	Plate,bearing support 支承片	1		YQX30-0101	
32	18619-30T11	Shim 垫片	2		YQX30-0023	
33	18620-15T11	Shaft,output 输出轴	1		YQX30-1000	
34	00294-32208	Bearing 轴承32208	按需		YQX30-0015	
35	00294-30208	Bearing 轴承32208	1		6206	
36	18621-30T11	Retainer,oil seal 油封保持架	1		YQX30-0013	
37	01235-80310	O-ring O形圈80×3.1	1	☆	GB893.1-86-24	
38	18622-30T11	Seal,oil 油封	1	☆	YQX30-0004	
39	18623-30T11	Nut 螺母	1		YQX30-0002	
40	18624-30T11	Shim 垫	AR		YQX30-0011	
41	05782-0820A	Bolt 螺栓M8×20	4		32208	
42	00093-0801A	Washer 垫圈8	4		GB93-87-8	
43	18625-30T11	Collar 轴环	1	☆	YQX30-0003	
44	18626-30T11	Pipe oil fill 加油管	1		YQX30-0007	
45	Y18629-25T11	Plate 弹性板	1	4NTE92		18604-30T11
	M18629-25T11	Plate 弹性板	1	F2		18604-30T11
46	05782-0845A	Bolt 螺栓M8×45	4		GB5783-86 M8×45	
47	05782-0840A	Bolt 螺栓M8×40	2		GB5783-86 M8×40	
48	18628-30T11	Gasket 衬垫	6		8JB982-77	
	18600-15T11-KIT	Service kits 传动装置修理包	1	All☆Parts		



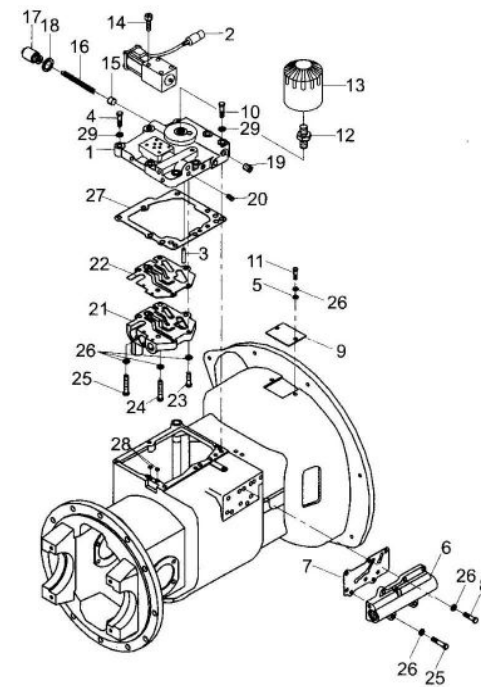
序号	零件编号	零部件名称	数量	备注	供方零件号	备注2
Item No	Part No	Description	QTY	Remark	Supplier Part No	Remark2
A	18627-30T11	Operation valve ass'y 操纵阀总成		All ☆ Parts		
1	18630-30T11	Cover,case 壳体盖	1	☆		18627-30T11
2	18647-30T11	Valve,solenoid 电磁阀	1			
3	18679-30T11	Pin 销	1	☆		18627-30T11
4	05782-1055A	Bolt 螺栓M10×55	2		GB5783-86 M8x40	
5	00971-0801A	Shim 垫圈8	2		GB93-87-8	
6	186E0-30T11	Inching value ass'y 微动阀总成	1		YQX30-5000	
7	18651-30T11	Shim 衬垫	1		YQX30-0022	
8	05782-0825A	Bolt 螺栓M8×25	4		GB5783-86 M8x25	
9	18652-30T11	Cover,tor-con 变矩器盖	1			
10	05782-1040A	Bolt 螺栓M10×40	6		GB5783-86 M10x55	
11	05782-0812A	Bolt 螺栓M8×12	2		GB5783-86 M8x12	
12	18638-30T11	Nipple 管接头	1	☆	YQX30-4005	18627-30T11
13	18639-30T11	Filter,oil 滤油器	1		YQX30-0300	
14	18633-30T11	Screw 螺钉M5×45	4			
15	18640-30T11	Piston 活塞	1	☆	YQX30-4004	18627-30T11
16	18641-30T11	Spring 弹簧	1	☆	YQX30-4003	18627-30T11
17	18642-30T11	Cup 安全阀盖	1	☆	YQX30-4002	18627-30T11
18	18643-30T11	Packing,copper 衬垫	1	☆	Q/301 B202-86	18627-30T11
19	18644-30T11	Plug 螺塞1/8"	6	☆	JB/ZQ4446-86 R1/4	18627-30T11
20	18645-30T11	Plug 螺塞1/4"	4	☆	YQX30-3002	18627-30T11
21	186D0-30T11	Control ass'y 控制阀总成	1	☆	YQX30D-4200	18627-30T11
22	18648-30T11	Gasket 垫片	1	☆	YQX30D-4001	18627-30T11
23	05782-0835A	Bolt 螺栓M8×35	2	☆	GB5783-86 M8x35	18627-30T11
24	05782-0855A	Bolt 螺栓M8×55	2	☆	GB5783-86 M6x50	18627-30T11
25	05782-0850A	Bolt 螺栓M8×50	2	☆	GB5783-86 M8x55	18627-30T11
26	00093-0801A	Shim 垫圈8	12	☆		18627-30T11
27	18649-30T11	Gasket 垫片	1			
28	01235-09190	O-ring O形圈9×1.9	2			
29	00093-1001A	Washer,lock 垫圈10	8			

盖和微动阀、电液控制

INCHING & ELECTRIC-HYDRAULIC VALVE

图04

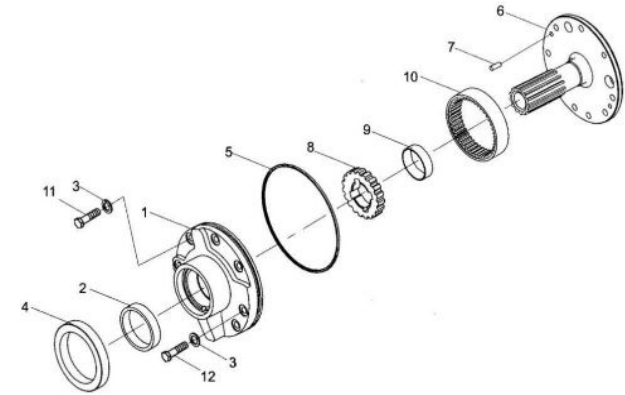
Fig.04



序号	零件编号	零部件名称	数量	备注	供方零件号	备注2
Item No	Part No	Description	QTY	Remark	Supplier Part No	Remark2
A	18605-30T11	Charging pump ass'y 供油泵总成	1		YQX30-3000	
1	18653-30T11	Case,pump 泵体	1		YQX30D-3000	18605-30T11
2	18654-30T11	Bushing 衬套	1		YQX30D-3007	18605-30T11
3	18655-30T11	Washer 衬垫	8		YQX30D-3001	18605-30T11
4	18656-30T11	Seal,oil 油封	1		8JB982-77	18605-30T11
5	18657-30T11	Snap O-ring O形密封圈	1		GB9877.1-88(B50x68x8)	18605-30T11
6	18658-30T11	Support,starter 转子	1		YQX30D-3006	18605-30T11
7	00119-0616A	Pin 圆柱销6×16	2		GB119-88 B6x16	18605-30T11
8	18659-30T11	Gear,drive 主动齿轮	1		YQX30D-3003	18605-30T11
9	18660-30T11	Bushing 衬套	1		YQX30D-3004	18605-30T11
10	18661-30T11	Gear,driven 被动齿轮	1		YQX30D-3005	18605-30T11
11	05782-0825A	Bolt 螺栓M8×25	3		GB5783-86 M8x25	18605-30T11
12	05782-0835A	Bolt 螺栓M8×25	5		GB5783-86 M8x35	18605-30T11

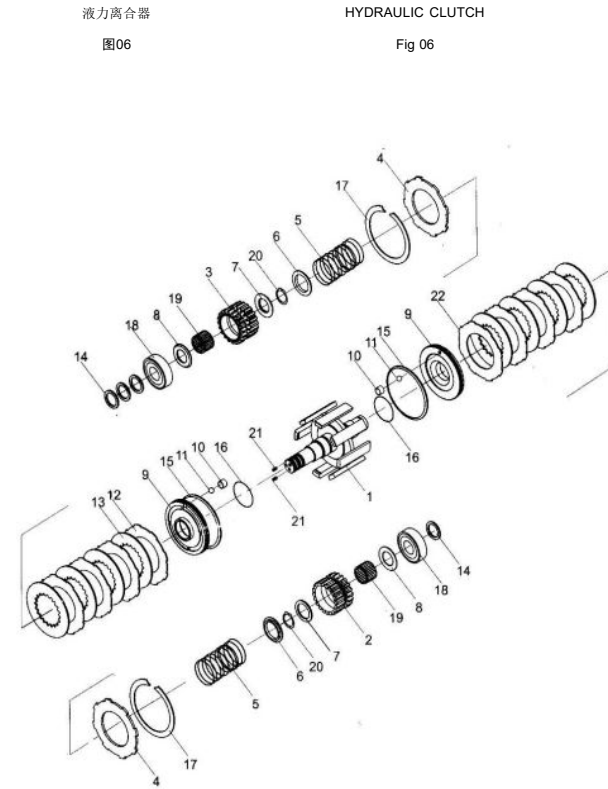
供油泵
图05

CHARGING PUMP
Fig 05



序号	零件编号	零部件名称	数量	备注	供方零件号	备注2
Item No	Part No	Description	QTY	Remark	Supplier Part No	Remark2
A	186C0-15T11	Clutch,hydraulic	离合器总成	1		YQX30-1000
1	18662-30T11	Shift,input	输入轴总成	1		YQX30-1100
2	18663-30T11	Gear,reverse	倒车档齿轮	1		YQX30-1003
3	18664-30T11	Gear,forward	前进档齿轮	1		YQX30-1005
4	18665-30T11	Plate,end	端板	2		YQX30-1001
5	18666-30T11	Spring,return	回程弹簧	2		YQX30-1004
6	18667-30T11	Seat,spring	弹簧座	2		YQX30-1009
7	18668-30T11	Ring,thrust	止推环A	2		YQX30-1008
8	18669-30T11	Ring,thrust	止推环B	2		YQX30-1007
9	18670-30T11	Piston	活塞	2		YQX30-1002
10	18671-30T11	Plug	塞	1		YQX30-1010
11	18672-30T11	Ball,steel	钢球φ3	2		GB308-89 4.000 G2006
12	18673-30T11	Plate,friction	摩擦片	8	☆	YQX30-1012
13	18674-30T11	Plate,separator	隔片	8	☆	YQX30-1013
14	18675-30T11	Ring,seel	密封环A	4	☆	YQX30-1006
15	18676-30T11	Ring,seel	密封环B	2	☆	YQX30-1011
16	01235-33735	O-ring	O形圈33.7×3.5	2	☆	GB1235-76 10x3.5
17	18677-30T11	Snap,ring	卡环	2		YQX30-1014
18	00276-20600	Bearing	轴承6206-2RS	2		6206
19	18678-30T11	Bearing,needle	滚珠轴承	2		K35x42x20
20	08941-4000A	Snap,ring	挡圈40	2		GB894.1-86-40
21	00078-0808A	Screw	螺钉M8×8	2		GB78-95 M8x8
22	186C0-15T11-KIT	Papilionaceous plate	液力离合器修理包	1	All ☆Parts	

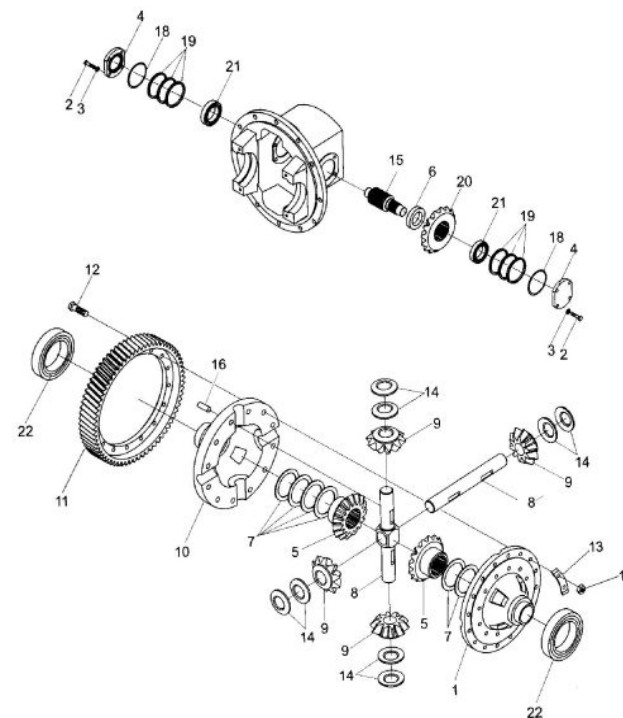
186C0-15T11



序号	零件编号	零部件名称	数量	备注	供方零件号	备注2
Item No	Part No	Description	QTY	Remark	Supplier Part No	Remark2
01	18702-15T11	Case,cross L.H	1		YQX25-2102	
02	05782-1025A	Bolt	8		GB5783-86 M10x25	
03	00093-1001A	Washer	8		GB93-87-10	
04	18703-25T11	Cover,bearing	2			
05	18704-15T11	Gear,side	2			
06	18705-25T11	Spacer	1	☆		
07	18706-15T11	Shim	AR	按需要		
08	18714-30T11	Shaft,pinion	1			
09	18708-15T11	Gear,pinion	4		YQX30-2104	
10	18709-15T11	Case,cross R.H	1		YQX30-2103	
11	18710-15T11	Gear,ring	1		YQX30-2002	
12	18711-15T11	Bolt	12		YQX30-2001	
13	18712-15T11	Washer,lock	6		YQX30-2004	
14	18713-15T11	Washer,thrust	AR	按需要	GB6176-86 M10x1.25 12.9 GB1235-76 75x3.1	
15	18717-25T11	Shaft,final pinon gear	1		YQX30-0017	
16	00119-0625A	Pin parallel	1		YQX30-0017	
17	06170-1000A	Nut	12		YQX30-0017	
18	01235-75310	O-ring	2	☆	YQX30-0017	
19	18715-30T11	Shim	AR	☆按需要	6213	
20	18716-25T11	Gear,spiral vevel	1		32207GB/T297-94	
21	00294-32207	Bearing	2			
22	00272-21100	Bearing	2			
	18701-15T11-KIT	Seal kit	1	All ☆ Parts		

差速器总成

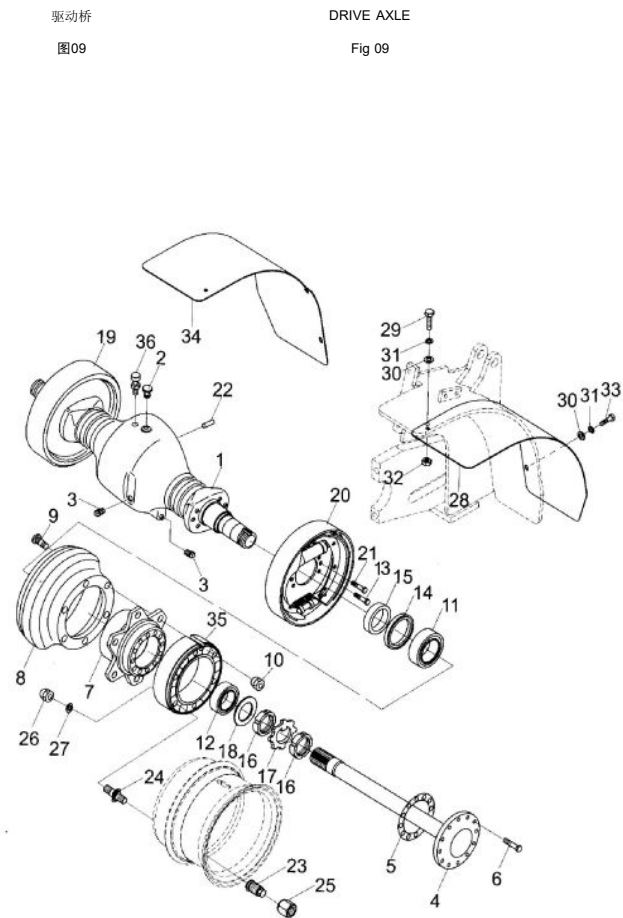
图07



DIFFERENTIAL

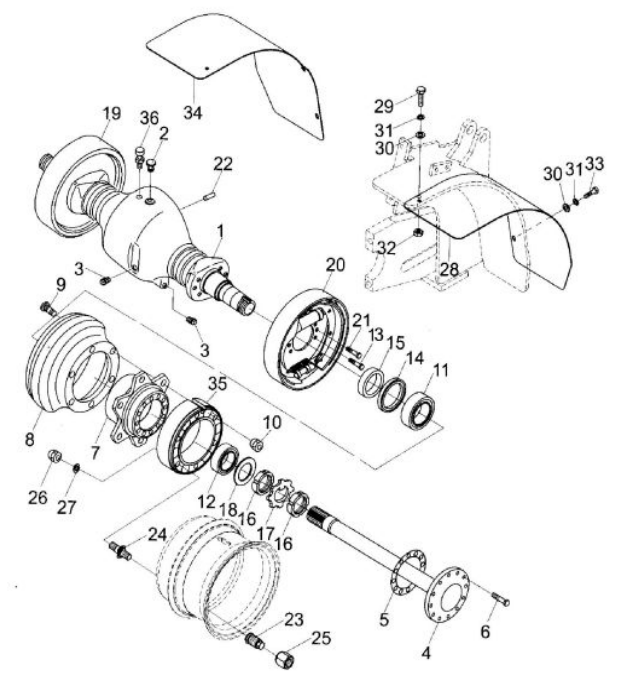
Fig 07

序号	零件编号	零部件名称	数量	备注	供方零件号	备注2
Item No	Part No	Description	QTY	Remark	Supplier Part No	Remark2
1	40200-15T11	Housing,axle	1			
	402000-15TS11	Housing,axle	1			
2	40201-15T11	Plug,rubber	1			
3	40202-15T11	Plug	2			
4	40203-15T11	Half,shaft	2			
5	40204-15T11	Gaeket	2	☆		
6	40205-15T11	Bolt	16			
7	40206-15T11	Hub,wheel	2			
8	40207-15T11	Drum,braking	2			
9	40208-15T11	Bolt	12	单胎		
*	40209-15T11	Bolt	12	双胎		
10	40210-15T11	Nut	12			
11	00294-30213	Big bearing,taper	2			
12	40208-30T11	Bearing & oil seal	2			
13	40211-15T11	Bolt	8			
14	40203-30T11	Oil seal U型密封圈FB100×125×12D	2	☆		
15	40212-15T11	Snap ring	2			
16	00810-6000A	Nut	4			
17	00858-6000A	washer locker	2	☆		
18	40213-15T11	Snap ring	2	☆		
19	40214-15T11	Brake ass'y (R,H)	1			
20	40215-15T11	Brake ass'y (L,H)	1			
21	40211-15T11	Bolt	8			
22	00119-0826A	Pin	1			
23*	40217-15T11	Nut,hub	12	双胎		
24*	40218-15T11	Bolt	12	双胎		
25*	06173-1400A	Nut	12	双胎		
26*	40219-15T11	Nut,hub	12	双胎		
27*	00093-1401A	Washer,lock	12	双胎		
28*	40220-15T11	Fender	1	双胎		
29*	05783-1035A	Bolt	2	双胎		



序号	零件编号	零部件名称	备注	供方零件号	备注2
Item No	Part No	Description	QTY	Remark	
30*	00096-1001A	Washer	垫圈10	12	双胎
31*	00093-1001A	Washer,lock	垫圈10	6	双胎
32*	06170-1000A	Nut	螺母M10	6	双胎
33*	05786-1420A	Bolt	螺栓M10×35	4	双胎
34*	40221-15T11	Fender	挡板(右)	1	双胎
35*	40222-15T11	Joint bushing	联接套	2	双胎
36	40213-30T11	Plug	透气塞	1	
	40400-15T11-KIT		驱动桥修理包	1	All☆Parts

驱动桥 DRIVE AXLE

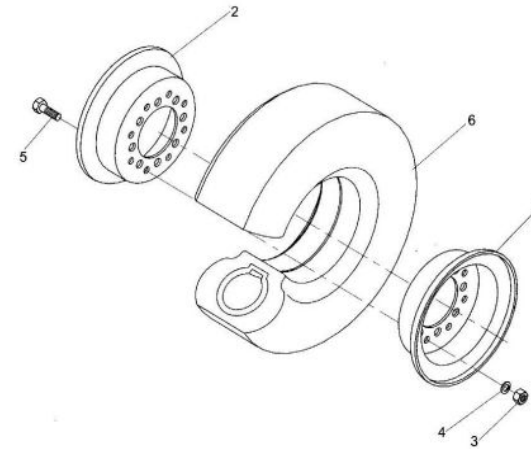


序号	零件编号	零部件名称	数量	备注	供方零件号	备注2
Item No	Part No	Description	QTY	Remark		
A	21005-15T11-KIT	Tyre ass'y 轮胎总成	2			
B	21006-15T11-KIT	Solid tyre ass'y 实心胎总成	2			
1	21002-15T11	Rim,outside 外轮辋	2			
2	21003-15T11	Rim,inside 内轮辋	2			
3	06170-1200A	Nut 螺母M12	12			
4	00093-1201A	Washer,lock 垫圈12	12			
5	21004-15T11	Bolt 轮辋螺栓	12			
6	21005-15T11	Tire 轮胎6.50-10-10PR	2			
	21006-15T11	Solid tyre 实心胎6.50	2			

驱动轮 (单胎)

DRIVE WHEEL (SINGLE TYRE)

Fig10



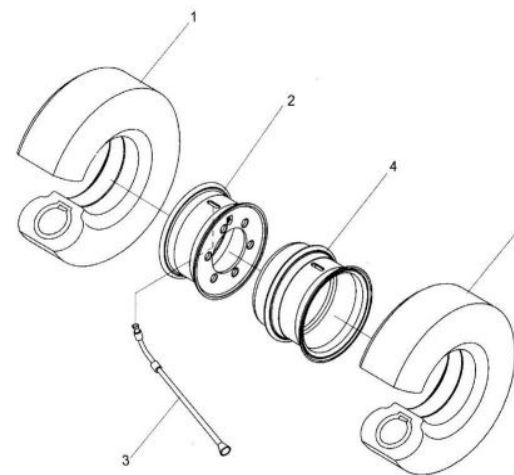
序号	零件编号	零部件名称	数量	备注	供方零件号
Item No	Part No	Description	QTY	Remark	
A	21005-15T11-KIT-IN	Tyre ass'y-inside 内充气胎总成	2	6.5-10-10PR	
B	21006-15T11-KIT-IN	Solid tyre ass'y-inside 内实心胎总成	2	6.5	
C	21005-15T11-KIT-OUT	Tyre ass'y-outside 外充气胎总成	2	6.5-10-10PR	
D	21006-15T11-KIT-OUT	Solid tyre ass'y-outside 外实心胎总成	2	6.5	
1	21005-15T11	Tire 轮胎	4	6.5-10-10PR	
	21006-15T11	Solid tyre 实心胎	4	6.5	
2	21007-15T11	Rim,inside ass'y 内轮辋总成	2		
3	21008-15T11	Pipe 充气接管	2	气胎用	
4	21009-15T11	Rim,outside ass'y 外轮辋总成	2		

备注2

驱动轮 (双胎)

DRIVE WHEEL (DOUBLE TYRE)

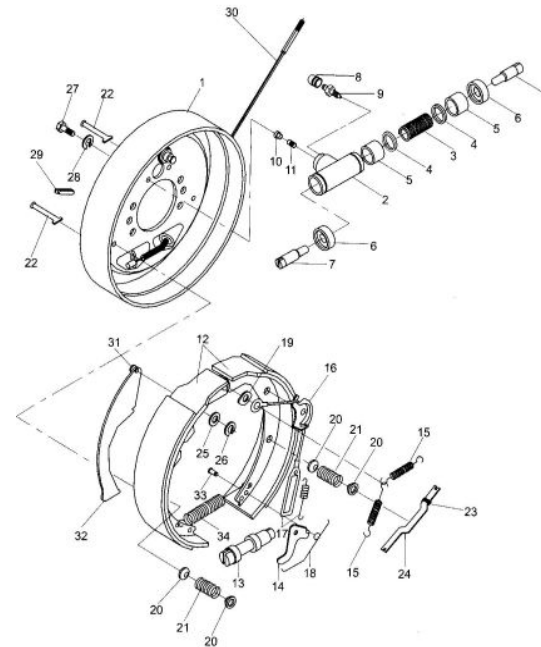
Fig11



序号	零件编号	零部件名称	数量	备注	供方零件号	备注2
Item No	Part No	Description	QTY	Remark	Supplier Part No	Remark2
A	40214-15T11	Wheel brake ass'y(L.H)制动器总成 (右)	1			
	40215-15T11	Wheel brake ass'y(R.H)制动器总成 (左)	1			
B	4022R-15T11	Weel cylinder ass'y(Inc.2-11)制动器分泵总成(包括2-	2			
1	4022L-15T11	Back platel ass'y 制动器底板总成	1			
2	40249-15T11	Cylinder 制动分泵缸	2		4022R-15T11	
3	40227-15T11	Spring 分泵弹簧	2		4022R-15T11	
4	40266-15T11	Cup,piston 分泵皮碗	2		4022R-15T11	
5	40228-15T11	Piston 分泵活塞	4		4022R-15T11	
6	40267-15T11	Cover,dust 分泵护罩	4		4022R-15T11	
7	40229-15T11	Rod,piston 分泵活塞顶杆	4		4022R-15T11	
8	40230-15T11	Cap,screw 分泵放气螺钉护罩	2		4022R-15T11	
9	40231-15T11	Scerw 制动分泵放气螺钉	2		4022R-15T11	
10	40268-15T11	Cap,dust 螺纹防护罩	2		4022R-15T11	
11	40232-15T11	Seat,tube 制动分泵油塞	2		4022R-15T11	
12	40233-15T11	Brake shoe & friction plate ass'y(Inc.11)制动蹄带摩擦	4			
13	40234-15T11	Clearance adjuster 间隙调整器	2			
14	40235-15T11	Pawl 棘爪	2			
15	40236-15T11	Return spring,brake shoe 制动蹄回位弹簧	4		40214-15T11, 40215-15T11	
16	40237-15T11	Guide 导向块	2		40214-15T11, 40215-15T11	
17	40238-15T11	Wire unit,spring 弹簧拉线装置	2		40214-15T11, 40215-15T11	
18	40269-15T11	Spring 弹簧	2		40214-15T11, 40215-15T11	
19	40239-15T11	Guide plate 导向板	2		40214-15T11, 40215-15T11	
20	40240-15T11	Compression spring seat 压簧座	8		40214-15T11, 40215-15T11	
21	40241-15T11	Compression spring 压簧	4		40214-15T11, 40215-15T11	
22	40242-15T11	Pull rod,compression spring 压簧拉杆	4		40214-15T11, 40215-15T11	
23	40243-15T11	Push rod,hand beaking 手制动推杆	2		40215-15T11	

制动器总成
图14

WHEEL BRAKE
Fig 14



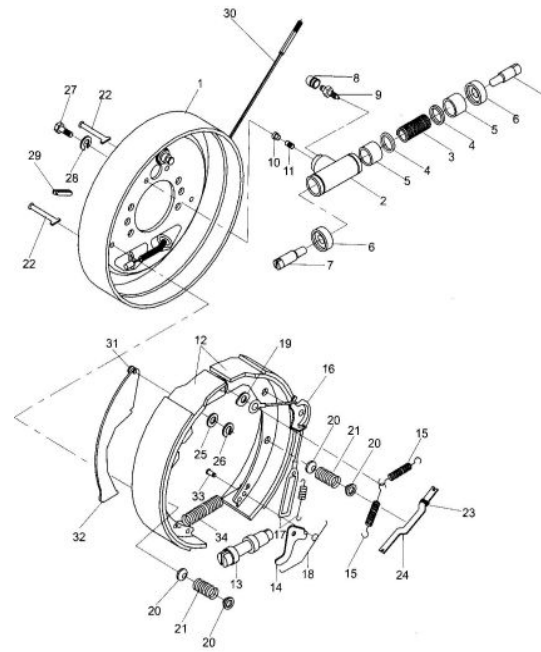
序号	零件编号	零部件名称	数量	备注	供方零件号	备注2
Item No	Part No	Description	QTY	Remark	Supplier Part No	Remark2
25	40245-15T11	Washer,spring 弹性垫片	2			
26	40246-15T11	Snap ring,pin axle 杆销挡圈	2			
27	05782-0616A	Bolt 螺栓M6×16	4			
28	00093-0601A	Washer,lock 垫圈6	4			
29	40271-15T11	Cover 胶堵	4			40214-15T11, 40215-15T11
30	40248-15T11	Cable R.H 制动钢索总成(右)	1			
	40247-15T11	Cable L.H 制动钢索总成(左)	1			
31	40250-15T11	Pin 销钉	2			
32	40251-15T11	Rod 手制动拉杆	2			40214-15T11, 40215-15T11
33	40252-15T11	Pin 销钉	2			
34	40253-15T11	Return spring 回位弹簧	2			40214-15T11, 40215-15T11

制动器总成 (FD20 25T)

图14

WHEEL BRAKE (FD20 25T)

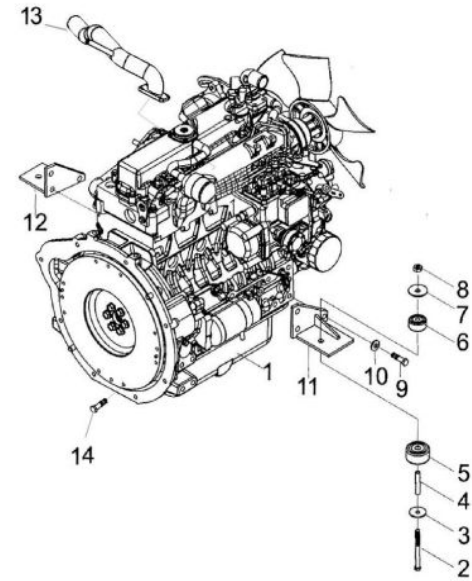
Fig 14



序号	图号	零部件名称	数量	备注	供方零件号	备注2
Item No	Part No	Description	QTY	Remark	Supplier Part No	Remark2
1	10100-15T11	Yanmar engine	1			
	M10100-15T11	Mazda engine	1			
	10100-15TS11	S4Q2 engine	1			
	10100-15TK11	K21 engine	1			
2	00311-10110	Bolt	2			
3	11406-30T11	Shim	2			
4	11405-30T11	bushing	2			
5	11401-30T11	Rubber mounts	2			
6	11402-30T11	Rubber mounts	2			
7	11404-30T11	Washer	2			
8	06178-0010A	Nut M10	2			
9	05785-1055A	Bolt	8	F2.0, 4TNE92		
10	00093-1001A	Washer10	8			
11	11200-15T01	Engine support,right	2			
12	M11201-25T01	Engine support,right	1			
	M11202-25T01	Engine support,left	1			
13	Y16500-25T11	air duct	1	4TNE92		
14	05783-0820A	Bolt	8	F2.0, 4TNE92		

发动机
图16

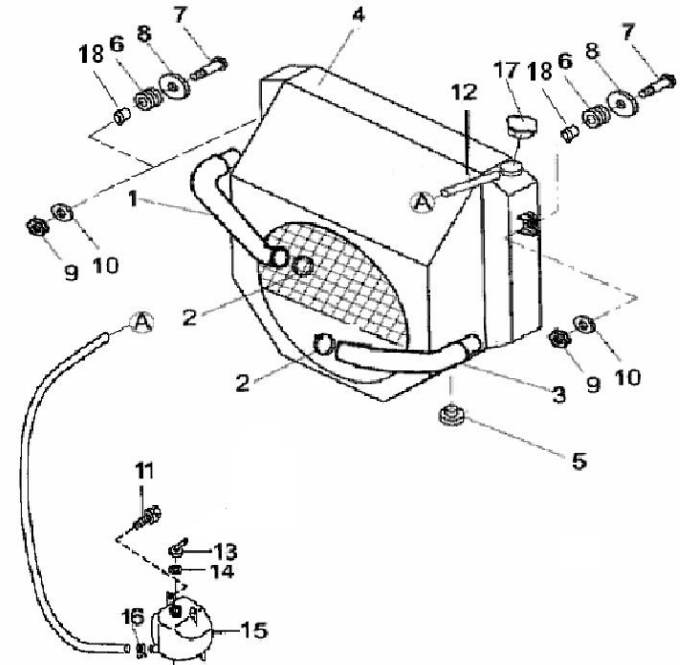
ENGINE
Fig 16



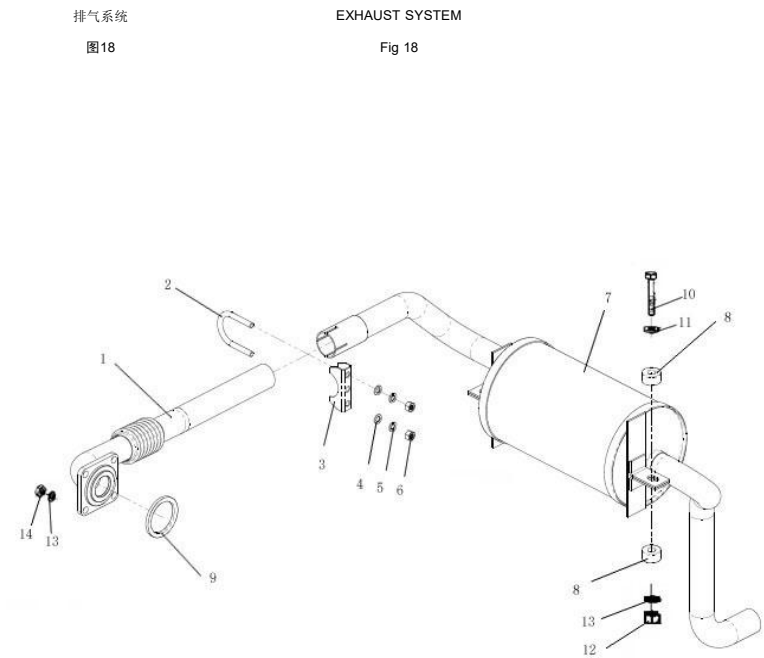
序号	图号	零部件名称	数量	备注	供方零件号	备注2
Item No	Part No	Description	QTY	Remark		Remark2
A	10012-30T11	Reservior ass'y	1	ALL☆ PARTS		
1	10006-15T11	House,upper	1			
	M10006-15T11	House,upper	1			
	321001-15TS11	House,upper	1	S4Q2		
2	03651-30T11	Clip	4			
3	10007-15T11	House,lower	1			
	M10007-15T11	House,lower	1			
	321002-15TS11	House,lower	1	S4Q2		
4	21400-15T11	Radiator	1			
	M21400-15T11	Radiator	1			
	321000-15TS11	Radiator	1	S4Q2		
5	10001-30T11	Rubber,lower	2			
6	11000-30T11	Rubber,upper	2			
7	05782-1050A	Bolt	2			
8	00096-1000A	Washer	2			
9	06170-1000A	Nut	2			
10	00093-1000A	Washer	2			
11	05782-0820A	Bolt	2			
12	11003-30T11	Outlet pipe	1			
13	10008-30T11	Outlet	☆			10012-30T11
14	10007-30T11	Rubber wash	1	☆		10012-30T11
15	10010-30T11	Reservior	1	☆	N163-330100-000	10012-30T11
16	00010-30T11	Clip	1			
17	10011-30T11	Cap of radtator	1			
18	11002-30T11	washer	2			

冷却系统
图17

COOLING SYSTEM
Fig 17



序号 Item No	图号 Part No	零部件名称 Description	数量 QTY	备注 Remark	供方零件号 Supplier Part No	备注2 Remark2
1	20600-15T11	Pipe ass'y	1			
	M20600-15T11	Pipe ass'y	1			
	312000-15TS11	Pipe ass'y	1	S4Q2		
2	13002-30T11	U-bolt	2			
3	13001-30T11	Stopper	1			
4	00097-0800A	Washer	2			
5	00093-0800A	Washer	2			
6	06170-0800A	Nut	2			
7	20800-15T11	Muffler	1			
	20700-15T11	Muffler-high	1	option		
	311000-15TS11	Muffler	1	S4Q2		
8	10002-30T11	Rubber	4			
9	20601-25T11	gasket	1			
	M20601-25T11	gasket	1			
10	05783-1050A	Bolt	2			
11	00097-1000A	Washer	4			
12	06170-1000A	Nut	2			
13	00093-1000A	Washer	4			
14	06170-1000A	Nut	4			

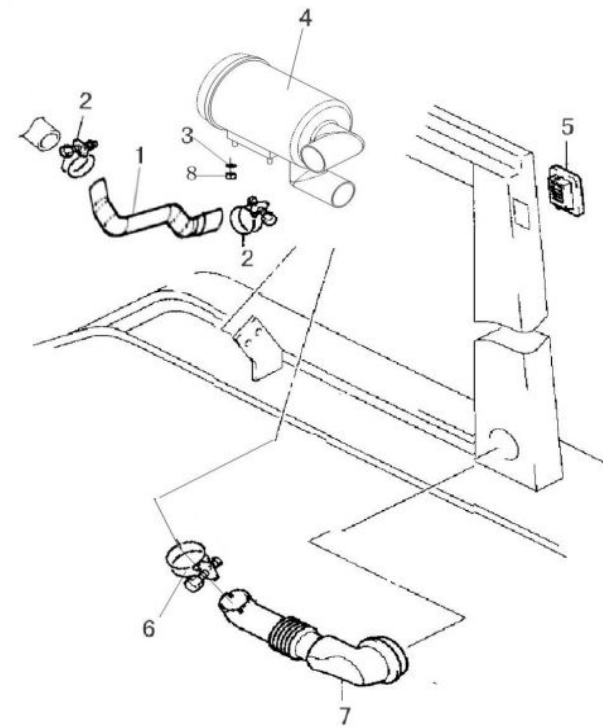


序号 Item No	图号 Part No	零部件名称 Description	数量 QTY	备注 Remark	供方零件号 Supplier Part No	备注2 Remark2
1	Y10005-25T11	House,outlet 空滤器出气管	1			
	M10005-15T11	House,outlet 空滤器出气管	1			
	330002-15TS11	House,outlet 空滤器出气管	1	S4Q2		
2	06476-30T11	Clip 双钢丝卡箍Φ64-76	2			
3	00093-0800A	WASHER 垫圈8	3			
4	19900-15T11	Air cleaner 空气滤清器	1			
5	73708-15T11	Cover 吸风罩	1			
6	00072-30T11	Clip 双钢丝卡箍Φ72	2			
7	10004-15T11	House,inlet 空滤器进气管	1			
	330001-15TS11	House,inlet 空滤器进气管	1	S4Q2		
8	06170-0800A	Nut 螺母M8	3			

空滤器安装

AIR CLEANER ASS'Y MOUNT

Fig20



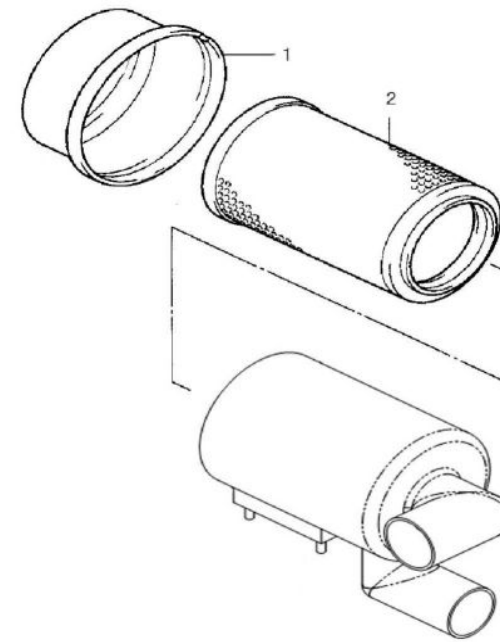
序号	零件编号	零部件名称	数量	备注	供方零件号	备注2
Item No	Part No	Description	QTY	Remark	Supplier Part No	Remark2
A	19900-15T11	Air cleaner	1			
1	19901-15T11	Cover	1			19900-15T11
2	19903-15T11	Filter,element	1			

空滤器总成1990030T11

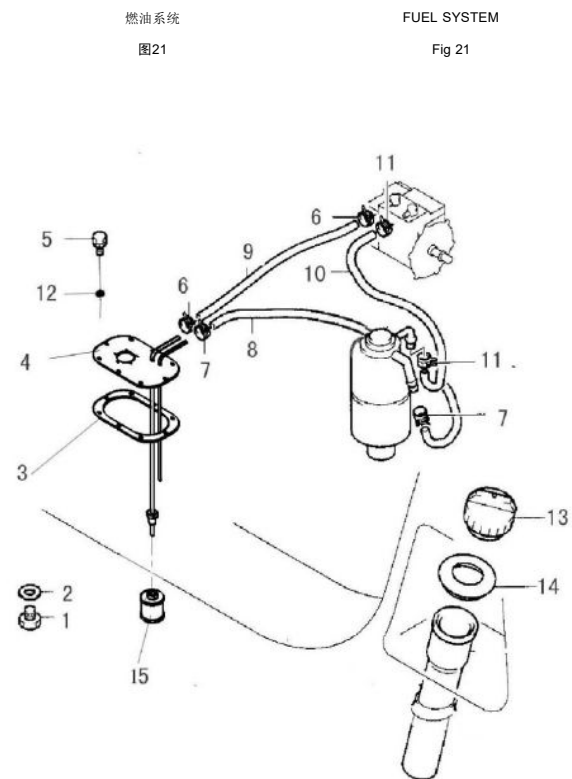
AIR CLEANER ASS'Y

图20

Fig 20



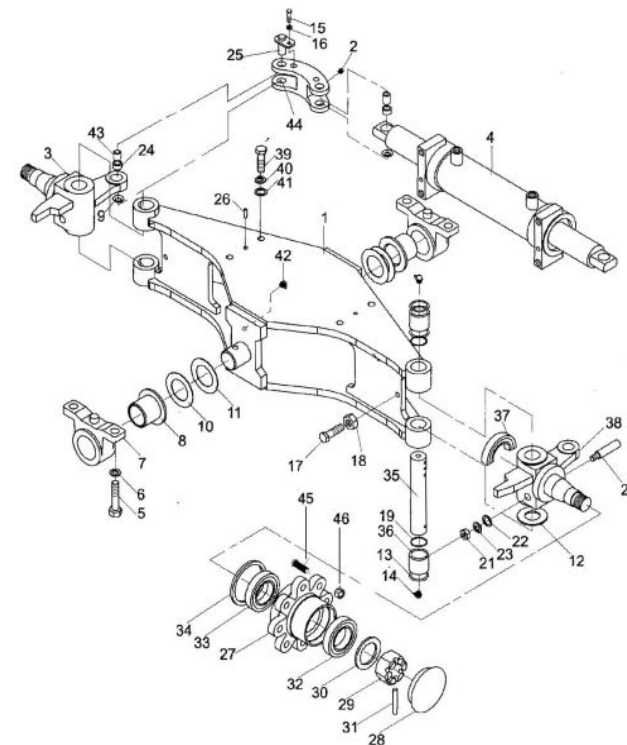
序号	零件编号	零部件名称	数量	备注	供方零件号	备注2
Item No	Part No	Description	QTY	Remark	Supplier Part No	Remark2
1	50309-30T01	Plug 放油螺塞	1			
2	00982-24000	Washer 组合垫24	1			
3	17302-15T11	Packing/Gasket 燃油盖密封垫	1			
4	17400-15T11	Plate/Cover,tank 燃油箱盖总成	1			
5	05782-0816A	Bolt M8X1x16 螺栓M8X1x16	8			
6	00012-30T11	Clip Φ12 双钢丝卡箍Φ12	2			
7	00015-30T11	Clip Φ15 双钢丝卡箍Φ15	2			
8	08440-30T11	House φ8x440 胶管φ8x440	1			
9	06240-30T11	House φ6x240 胶管φ6x240	1	4TNE92		
10	08250-30T11	House φ8x250 胶管φ8x250	1			
11	00015-30T11	Clip Φ15 双钢丝卡箍Φ15	2			
12	00093-0800A	Washer 垫圈8	8			
13	50009-30T11	Cap 加油盖	1			
14	50013-30T11	Rubber 加油管护圈	1			
15	17301-30T11	Sedimentor 燃油滤清器	1			



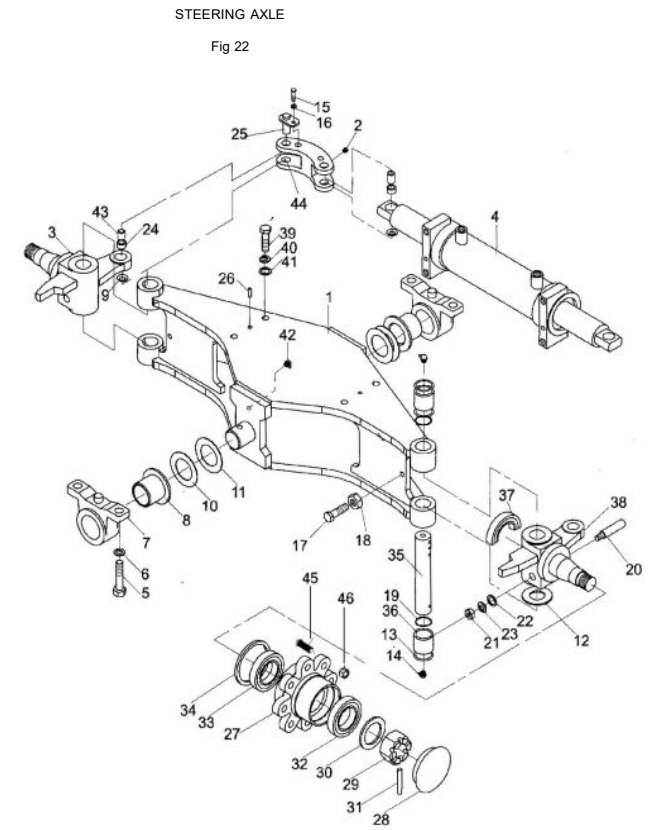
序号	零件编号	零部件名称	数量	备注	供方零件号	备注2
Item No	Part No	Description	QTY	Remark	Supplier Part No	Remark2
1	40300-15T11	Axle ass'y 转向桥体总成	1			
2	50012-15T11	Fitting grease 直通式滑脂嘴	4			
3	40302-15T11	Knuckle R.H. ass'y 右转向节总成	1			
4	40A00-15T11	Steering cylinder ass'y 转向油缸总成	1			
5	05786-1440A	Bolt 螺栓M14×1.5×40	4			
6	00093-1400A	Washer 垫圈14	4			
7	40328-15T11	Support 轴承座	2			
8	40326-15T11	Bushing 衬套	2			
9	40304-15T11	Shim 调整垫	4			
10	40321-15T11	Shim 调整垫	2			
11	40327-15T11	Shim 调整垫	2			
12	40306-15T11	Shim 转向节调整垫	2			
13	40315-15T11	Seal,oil 油封	2	☆		
14	40317-15T11	Fitting grease 弯颈式滑脂嘴	2			
15	05782-0818A	Bolt 螺栓M6×12	4			
16	00093-0800A	Washer,lock 垫圈6	4			
17	05782-1040A	Bolt 螺栓M10×1.25×40	2			
18	06170-1200A	Nut 螺母M10x1.25	2			
19	40314-15T11	O-ring O形圈	2	☆		
20	40310-15T11	Pin 紧固销	2			
21	06171-10125	Nut 螺母M8×1	2			
22	00093-0800A	Washer,lock 垫圈8	2			
23	00971-0800A	Washer 垫圈8	2			
24	40316-15T11	Bushing 衬套	4			
25	40319-15T11	Pin 锁紧销	4			

转向桥
图22

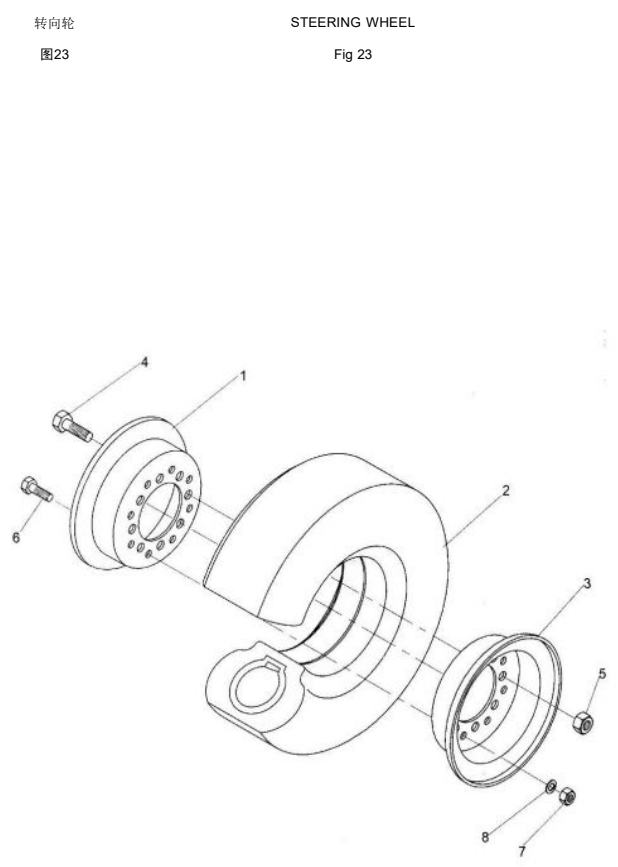
STEERING AXLE
Fig 22



序号	零件编号	零部件名称	数量	备注	供方零件号	备注2	转向桥
Item No	Part No	Description	QTY	Remark	Supplier Part No	Remark2	图22
26	00119-1020B	Pin	销8×20	2			
27	40309-15T11	Hub	转向轮毂	2			
28	40308-15T11	Cap	轮毂盖	2			
29	06171-3220A	Nut	螺母M24×2	2			
30	00971-3000A	Washer	垫圈24	2			
31	00092-63550	Pin	销5×45	2			
32	00297-30206	Bearing	轴承30206	2			
33	00297-30208	Bearing	轴承30208	2			
34	40305-15T11	Seel	骨架密封圈	2			
35	40303-15T11	Pin,king	转向节主销	2			
36	00290-94332	Bearing	滚针轴承942/25	4			
37	00301-51208	Bearing	单向推力球轴承总成	2			
38	40313-15T11	Knuckle L.H. ass'y	左转向节总成	1			
39	05782-1240A	Bolt	螺栓M12×40	4			
40	00971-1200A	Washer,lock	垫圈12	4			
41	00093-1200A	Washer	垫圈12	4			
42	40317-15T11	Fitting grease	弯颈式滑脂嘴	2			
43	40320-15T11	Bearing	关节轴承GE15ES	4	☆		
44	40307-15T11	Link	连杆(左)	1			
	40301-15T11	Link	连杆(右)	2			
45	40322-30T11	Bolt	轮毂螺栓M14X1.5-48	14			
46	40323-30T11	Nut	轮毂螺栓 M14X1.5	14			
	40300-15T11-KIT	Seal kit	转向桥修理包	1	ALL ☆ PARTS		



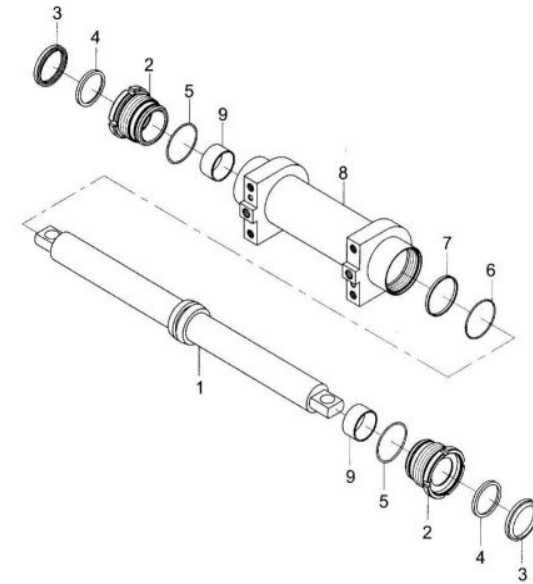
序号	零件编号	零部件名称	数量	备注	供方零件号	备注2
Item No	Part No	Description	QTY	Remark	Supplier Part No	Remark2
A	43402-15T11-KIT	Tyre ass'y 充气胎总成	2			
1	43401-15T11	Rim,inside 内轮辋	2			
2	43402-15T11	Tire 轮胎5.00-8-10PR	2			
3	43403-15T11	Rim,outside 外轮辋	2			
4	43404-15T11	Bolt 轮毂螺栓	12			
5	43405-15T11	Nut 轮毂螺母	12			
6	43406-15T11	Bolt 轮辋螺栓	12			
7	06170-1200A	Nut 螺母M12	12			
8	00093-1200A	Washer,lock 垫圈12	12			



序号	零件编号	零部件名称	数量	备注	供方零件号	备注2
Item No	Part No	Description	QTY	Remark	Supplier Part No	Remark2
A	40A01-15T11	Steering cylinder	1		Z1505-00060	
1	40A02-15T11	Piston rod ass'y	1		Z6053-05003	
2	40A03-15T11	Cap	2	☆	H24C4-52002	
3	40A04-15T11	Seal,dust	2	☆	H24C4-52001Sa	
4	40A05-15T11	Y-ring	2	☆	B6152-00065	
5	01235-48355	O-ring	2	☆	LBH-50	
6	01235-47355	O-ring	1	☆	H24C4-52153Sa	
7	40A06-15T11	Seal,slipper	1	☆	Z6003-07003	
8	40A07-15T11	Body,steering cylinder	1		24329-45591	
9	40A08-15T11	Bearing	2		22658-52301	
	40A00-15T11-KIT		1	All☆Parts		
		转向油缸总成				
		活塞杆总成				
		缸盖				
		防尘圈40				
		Y型密封圈40×50×6				
		O型密封圈48.7×3.55				
		O型密封圈47.5×3.55				
		支承环				
		缸筒总成				
		钢背轴承4030				
		转向油缸修理包				

转向油缸
图24

STEERING CYLINDER
Fig 24



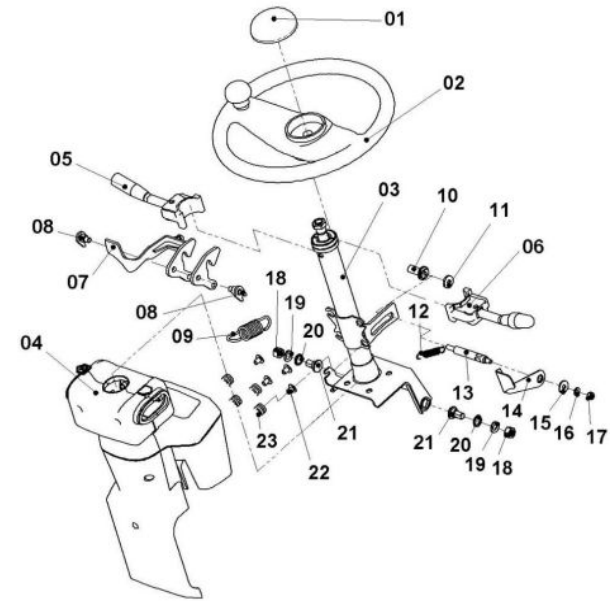
序号	零件编号	零部件名称	数量	备注	供方零件号	备注2
Item No	Part No	Description	QTY	Remark	Supplier Part No	Remark2
1	48009-30T11	Horn Button 喇叭按钮	1			
2	48200-30T11	Steering wheel 方向盘	1			
3	48800-30T11	Column 转向管柱总成	1			
4	24800-30T11	Combination meter 仪表总成	1			
5	24004-30T13	Switch,direction 方向组合开关	1			
6	24005-30T13	Switch,light 灯光组合开关	1			
7	48900-30T11	Lever,left 左手柄总成	1			
8	41000-30T01	Pin,lock 锁紧手柄销轴	2			
9	40002-30T11	Spring 转向管柱拉簧	1			
10	48003-30T01	Axle,knob 锁紧手柄轴1	1			
11	48007-30T01	washer,lock 锁紧垫圈	2			
12	40003-30T11	Spring 转向左手柄拉簧	1			
13	48002-30T01	Bolt 锁紧手柄螺栓	1			
14	48006-30T01	Lever ,right 右手柄	1			
15	00097-0801A	washer 垫圈8	1			
16	00093-0801A	washer 垫圈8	1			
17	06177-0800A	Nut 螺母M8	1			
18	06170-1200A	Nut 螺母M12	2			
19	00093-1201A	Shim 垫圈12	2			
20	48008-30T11	Shim 转向器固定滑垫	2			
21	40001-30T01	Bolt 转向器固定螺栓	2			
22	48005-30T11	Rubber gasket 橡胶垫衬套	4			
23	48004-30T11	Rubber shim 橡胶垫	4			

转向系统

图25

STEERING SYSEM

Fig 25



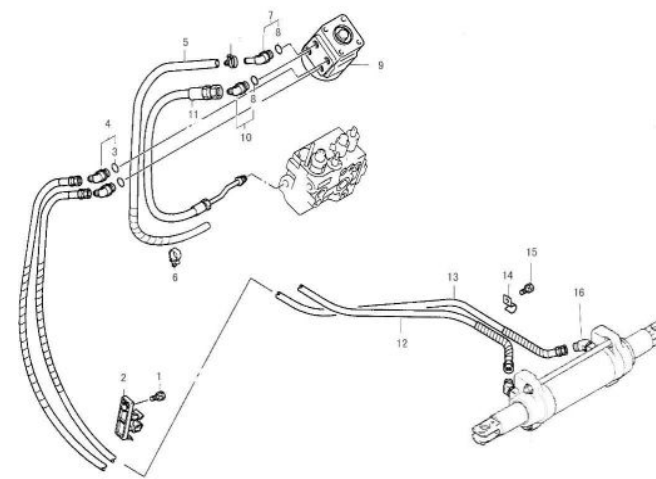
序号	零件编号	零部件名称	数量	备注	供方零件号	备注2
Item No	Part No	Description	QTY	Remark	Supplier Part No	Remark2
1	05787-0816A	Bolt	2			
2	52104-30T01	Clip,oil pipe	1			
3	01235-17265	O-ring	2			
4	68500-30T11	Connector	2			
5	82100-15T11	Hose	1			
6	01319-30T11	Clip	2			
7	68400-30T11	Connector	1			
8	01235-17265	O-ring	2			
9	48100-30T12	Orbitrol	1			
10	68300-30T11	Connector	1			
11	69E00-15T11	Hose H.P.	1			
12	69F00-15T11	Hose H.P.,left	1			
13	69G00-15T11	Hose H.P.,right	1			
14	52105-30T01	Clip	1			
15	05787-0825A	Bolt	2			
16	691A0-30T11	Connector	2			

转向管路

图26

STEERING PIPING

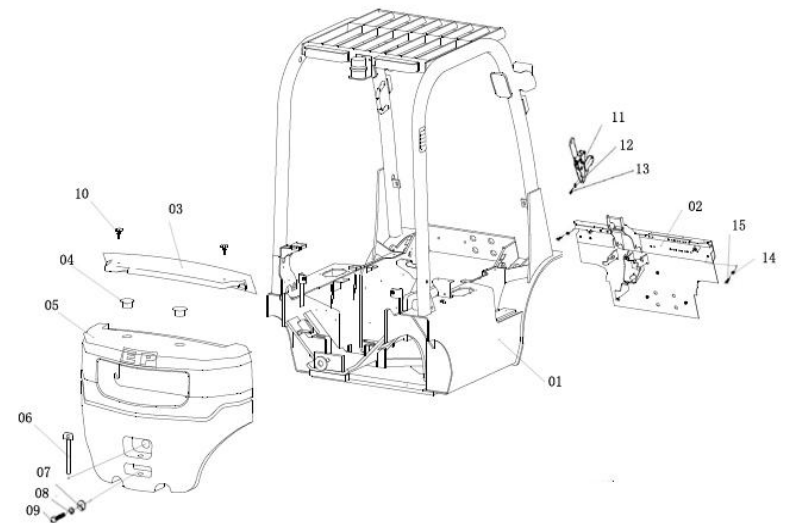
Fig 26



序号	图号	零部件名称	数量	备注	供方零件号	备注2
Item No	Part No	Description	QTY	Remark	Supplier Part No	Remark2
1	50100-15T01	Frame	1	4TNE92		
	M50100-15T01	Frame	1	F2.0		
	510000-15TS01	Frame	1	S4Q2		
2	50500-15T02	Combination meter support	1			
3	50002-15T12	Cover	1			
	50002-15T12G	Cover-high	1			
4	50011-30T11	Cap	1			
5	50001-15T11	Counter weight	1	CPC(Q)D15T8		
	50001-18T11	Counter weight	1	CPC(Q)D18T8		
6	52400-30T01	Pin	1			
7	50010-30T01	Washer	1			
8	00093-3001A	Washer,lock	1			
9	05785-24120	Bolt	1	CPC(Q)D15T8		
	05785-24150	Bolt	1	CPC(Q)D18T8		
10	51600-30T11	Bolt	2			
11	44300-30T11	Brake level ass'y	1			
12	00093-0801A	Washer,lock	2			
13	05782-0820A	Bolt	2			
14	00093-0801A	Washer,lock	4			
15	05782-0830A	Bolt	4			

车架和平衡重

图27



FRAME COUNTER WEIGHT

Fig 27

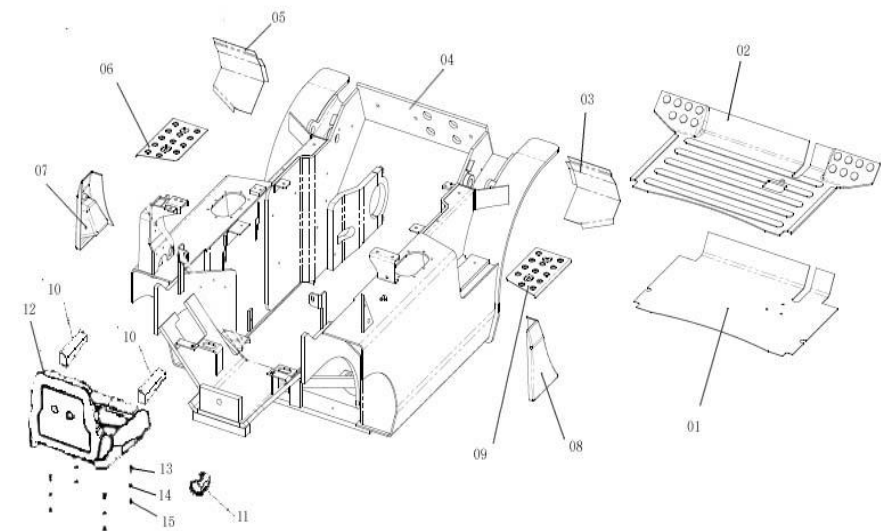
序号	零件编号	零部件名称	数量	备注	供方零件号	备注2
Item No	Part No	Description	QTY	Remark	Supplier Part No	Remark2
1	53000-15T01	Plate	1	前地板总成		
2	50012-15T11	Gasket	1	地板垫		
3	56000-15T01	braket R	1	右油缸护板总成		
4	50100-15T01	frame	1	车架焊接总成		
	M50100-15T01	frame	1	车架焊接总成		
5	57000-15T01	braket L	1	左油缸护板总成		
6	50004-30T01	Treadboard Right	1	左踏板垫		
7	50007-15T12	Cap	1	加油护罩		
8	50008-15T12	Cap	1	右腿护罩		
9	50003-30T01	Treadboard Left	1	右踏板垫		
10	EP/40300052	Arm	1	扶手(可调扶手)	M6×16	With seat
11	EP/40300058	seat belt	1	安全带(可自动弹回)		With seat
12	EP/40300025	Seat	1	座椅(SCI不带安全带及扶手)		
	EP/40300026	Seat		座椅GS12		
13	05782-0835A	Bolt	4	螺栓M8×35		
14	00093-0801A	Washer,lock	4	垫圈8		
15	06170-0800A	Bolt	4	螺母M8		

地板附件、座椅

FLOOR、SEAT

图28

Fig 28



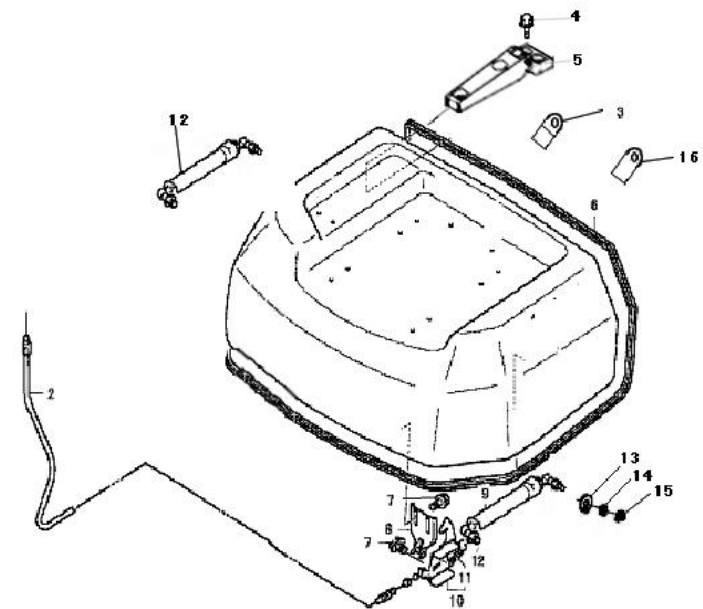
序号	零件编号	零部件名称	数量	备注	供方零件号	备注2
Item No	Part No	Description	QTY	Remark	Supplier Part No	Remark2
1	65500-15T11	Bonnet 发动机罩组件	1			
2	65700-30T11	Cable of open engine cover 引擎盖开启拉索总成	1			
3	65502-30T01	braket 嵌条压板	1			
4	05781-0820A	Bolt 螺栓M8x20	4			
5	65200-15T11	Hinge 铰链总成	2			
6	65504-30T11	Cover 装饰条	1			
7	05781-0820A	Bolt 螺栓M8x20	4			
8	65400-30T11	Plate,lock 锁扣固定板	1			
9	65300-30T11	Shock,absorber L 气弹簧总成(左)	1			
10	52300-30T11	Locker 锁扣总成	1			
11	52304-30T11	Spring, locker 锁扣拉簧	1			
12	653A0-30T11	Shock,absorber R 气弹簧总成(右)	1			
13	00971-0801A	washer 垫圈8	2			
14	00093-0801A	washer 垫圈8	2			
15	06177-0800A	Nut 螺母M8	2			
16	65501-30T11	braket 嵌条压板	8			

内燃机罩安装

BONNET MOUNT

图29

Fig 29



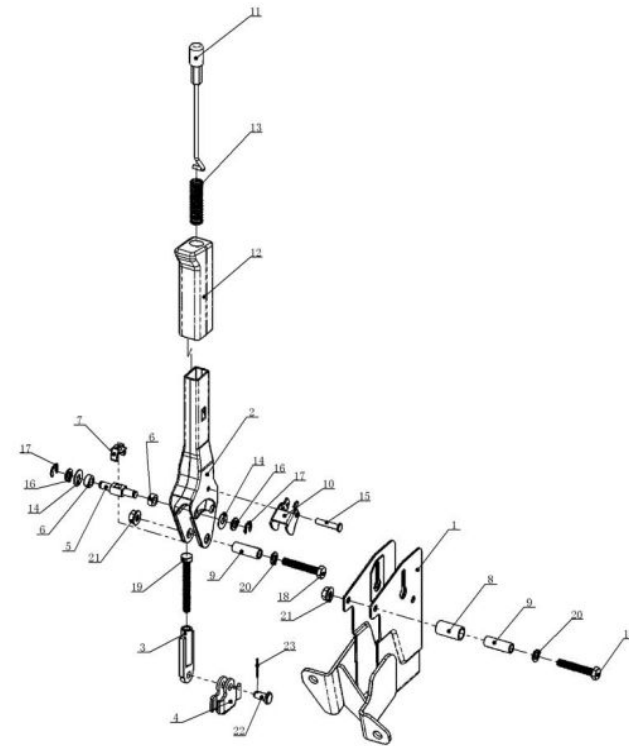
序号	零件编号	零部件名称	数量	备注	供方零件号	备注2
Item No	Part No	Description	QTY	Remark	Supplier Part No	Remark2
A	44300-30T11	Brake level ass'y	1	手制动总成		
1	44301-30T11	Bracket	1	手制动支架总成		44300-30T11
2	44302-30T11	Level	1	手柄支板总成		44300-30T11
3	44303-30T11	Rod	1	钢索拉板总成		44300-30T11
4	44304-30T11	Link	1	钢索挂板		44300-30T11
5	44305-30T11	Pin	1	拉板销轴		44300-30T11
6	44306-30T11	Sleeve	2	限位轴套		44300-30T11
7	44307-30T11	Ring	1	螺栓卡		44300-30T11
8	44308-30T11	Stopper	1	限位橡胶块		44300-30T11
9	44309-30T11	Sleeve	1	螺栓长套		44300-30T11
10	44310-30T11	Lock plate	1	锁板		44300-30T11
11	44311-30T11	Rod	1	推杆总成		44300-30T11
12	44312-30T11	Grip	1	手柄		44300-30T11
13	44313-30T11	Spring	1	弹簧		44300-30T11
14	44314-30T11	Washer	2	尼龙垫片		44300-30T11
15	44315-30T11	Shaft	1	销轴		44300-30T11
16	00097-0800A	Washer	2	垫圈8		44300-30T11
17	00896-0800A	Circlip	2	卡簧8		44300-30T11
18	05782-0850A	Bolt	2	螺栓M8x50		44300-30T11
19	05782-0870A	Bolt	1	螺栓M8x70		44300-30T11
20	00093-0800A	Washer	2	垫圈8		44300-30T11
21	06177-0800A	Nut	2	螺母M8		44300-30T11
22	00882-0818A	Pin	1	销轴8x18		44300-30T11
23	00091-1620A	Pin	1	开口销1.6x20		44300-30T11

停车制动

图30

BRAKE LEVEL

Fig 30



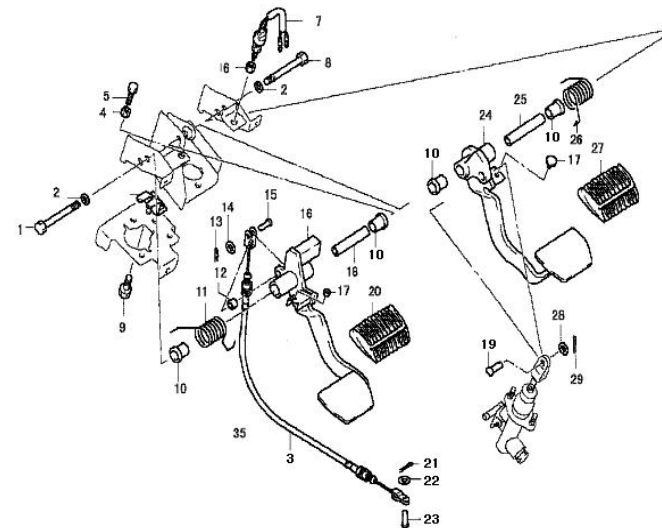
序号	零件编号	零部件名称	数量	备注	供方零件号	备注2
Item No	Part No	Description	QTY	Remark	Supplier Part No	Remark2
1	05782-10100	Bolt	1			
2	00097-1001A	Shim	2			
3	34400-15T11	Cabel ass'y	1			
4	06170-1000A	Nut	2			
5	05782-1045A	Bolt	1			
6	06170-1200A	Nut	1			
7	73720-30T11	Switch,brake	1			
8	05782-10110	Bolt	1			
9	05782-0825A	Bolt	1			
10	46502-30T11	Bushing,nylon	4			
11	46503-30T11	Spring,inchng	1			
12	40005-30T11	Bushing	1			
13	00091-3216A	Pin	1			
14	00097-0800A	Shim	1			
15	00882-08240	Pin	1			
16	465A0-30T01	Slight trivel pedal	1			
17	46603-30T11	absorber	1			
18	46501-30T01	Bushing	1			
19	00882-08300	Pin	1			
20	46504-30T11	Pedal gasket	1			
21	00091-3216A	Pin	1			
22	00097-0801A	Shim	2			
23	00882-08240	Pin	1			
24	466A0-30T01	Brake pedal	1			

行车制动与微动操纵

BRAKE —INCHING CONTROL

图31

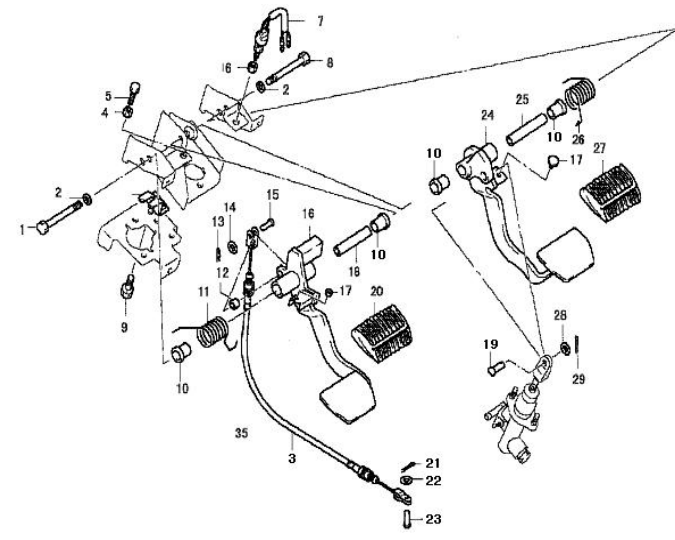
Fig 31



序号	零件编号	零部件名称	数量	备注	供方零件号	备注2
Item No	Part No	Description	QTY	Remark	Supplier Part No	Remark2
25	46601-30T01	Pin,clevis	1			
26	46602-30T11	Spring	1			
27	46504-30T11	Pedal gasket	1			
28	00097-0801A	Shim	2			
29	00091-3216A	Pin	1			

行车制动与微动操纵 BRAKE —INCHING CONTROL

图31 Fig 31



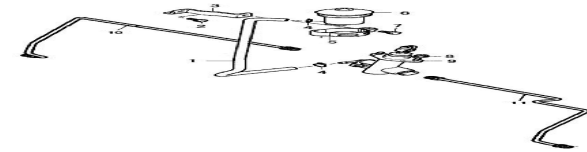
序号	零件编号	零部件名称	数量	备注	供方零件号	备注2
Item No	Part No	Description	QTY	Remark	Supplier Part No	Remark2
1	68903-30T01	Hose 油管	1			
2	05787-0816A	Bolt 螺栓M8x16	1			
3	68900-30T01	Support 油杯固定板	1			
4	06170-0600A	Clip 卡箍Φ	2			
5	68902-30T01	Support ring 油杯固定环	1			
6	68800-30T11	Tank,reserve 制动油杯	1			
7	05787-0630A	Bolt 螺栓M6x30	1			
8	06170-0800A	Nut 螺母M8	2			
9	68600-15T11	Master cylinder 制动总泵	1			
10	46200-15T11	House,left 左制动油管	1			
11	46300-15T11	House,right 右制动油管	1			

制动总泵安装

MASTER CYLINDER MOUNT

图32

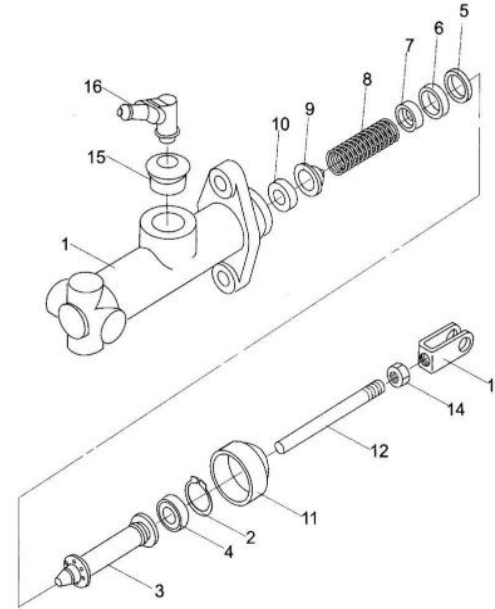
Fig 32



序号	零件编号	零部件名称	数量	备注	供方零件号	备注2
Item No	Part No	Description	QTY	Remark	Supplier Part No	Remark2
A	68600-15T11	Master cylinder	1	制动总泵		
1	68601-15T11	Body	1	阀体		68600-15T11
2	68602-15T11	Ring,stopper	1	止动环		68600-15T12
3	68603-15T11	Piston	1	活塞		68600-15T13
4	68604-15T11	Cup,secondary	1	前皮碗		68600-15T14
5	68605-15T11	Spacer,cup	1	衬套皮碗		68600-15T15
6	68606-15T11	Cup,primary	1	主皮碗		68600-15T16
7	68607-5T11	Sear,spring	1	弹簧座		68600-15T17
8	68608-15T11	Spring	1	弹簧		68600-15T18
9	68609-15T11	Valv,check	1	切断阀		68600-15T19
10	68610-15T11	Seat,valve	1	阀座		68600-15T20
11	68611-15T11	Boots	1	保护罩		68600-15T21
12	68702-30T11	Rod,push	1	推杆		
13	68613-30T11	Clevis	1	支耳		68600-15T23
14	68614-30T11	Nut	1	螺母M8		68600-15T24
15	68615-30T11	Bushing,rubber	1	胶皮衬套		68600-15T25
16	68616-30T11	Union	1	接头		68600-15T26

制动总泵
图33

MASTER CYLINDER
Fig 33

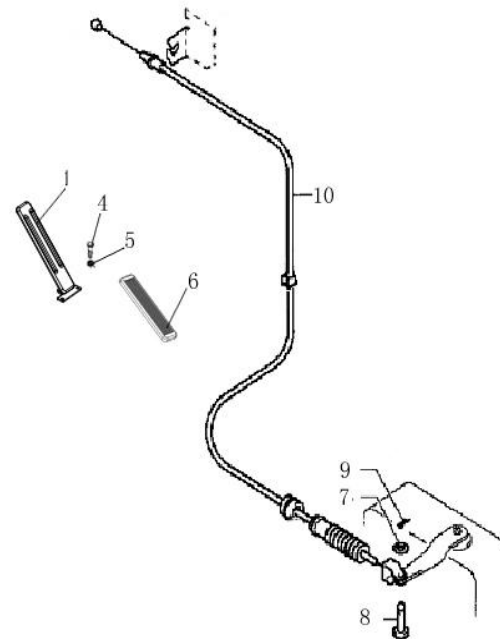


序号	零件编号	零部件名称	数量	备注	供方零件号	备注2
Item No	Part No	Description	QTY	Remark	Supplier Part No	Remark2
1	18300-15T11	Pedal	1			
2	18100-15T11	Control ass'y	1			
3	05781-0816A	Bolt	2			
4	05781-0610A	Bolt	2			
5	00097-0600A	Washer	2			
6	46505-30T11	Ruber	1			
7	00097-0600A	Washer	2			
8	00882-06150	Pin	1			
9	00091-0216A	Pin	1			
10	18200-15T11	Soft shaft	1			
	M18200-15T11	Soft shaft	1			

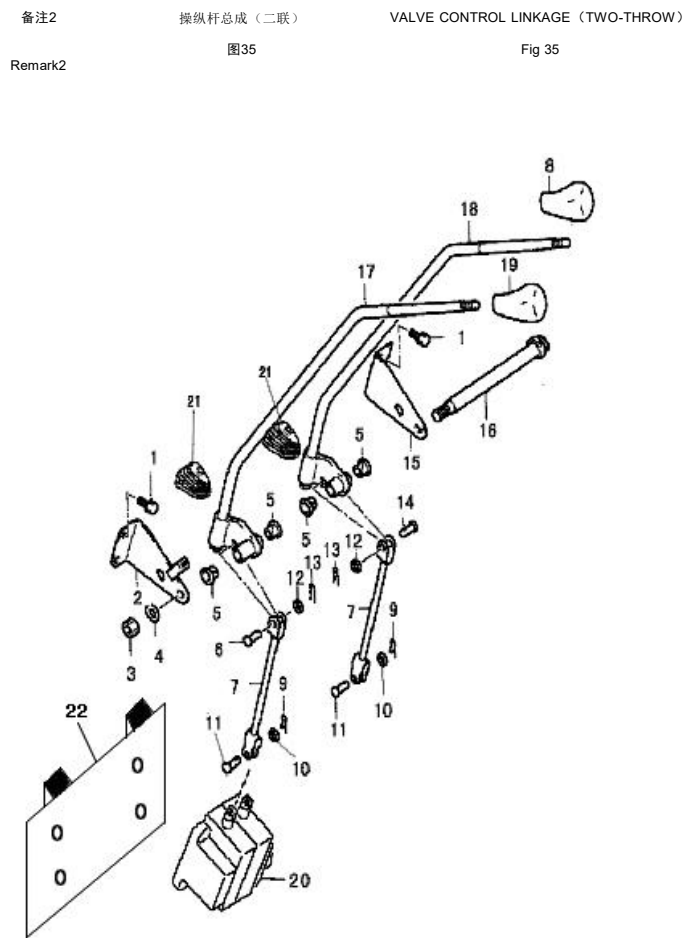
油门踏板
图34



ACCELERATOR PEDAL
Fig 34



序号	零件编号	零部件名称	数量	备注	供方零件号
Item No	Part No	Description	QTY	Remark	Supplier Part No
1	05787-0820A	Bolt	4		
2	69401-30T01	Bracket L.H.	1	左固定支架	
3	06170-1000A	Nut	1	螺母M10	
4	00093-1001A	Washer	1	垫圈10	
5	69404-30T01	Bushing,nylon	4	尼龙石墨套φ12	
6	00882-08240	Pin	1	销轴8x24	
7	694E0-30T01	Joint	2	连接杆总成	
8	694D0-30T11	Knob,tilting	1	倾斜手柄球	
9	00091-12120	Pin,cotter	2	开口销1.2x12	
10	00097-0501A	Shim	2	垫圈5	
11	40004-30T01	Pin	2	销轴（操纵杆）	
12	00097-0801A	Shim	2	垫圈8	
13	00091-0220	Pin,cotter	2	开口销2x20	
14	00882-08240	Pin	1	销轴8x24	
15	69402-30T01	Bracket R.H	1	右固定支架	
16	69403-30T01	shaft,control	1	操纵手柄连接杆	
17	694A0-30T01	Lever,lift	1	提升操纵杆总成	
18	694B0-30T01	Lever,tilt	1	倾斜操纵杆总成	
19	694C0-30T11	Knob, lifting	1	起升手柄球	
20	69500-30T11	Multi-way valve(two-throw)	1	多路换向阀（二联）	
21	40007-30T01	Cover	2	护套	6048-10021
22	69700-30T01	Braket	1	固定板	



序号 Item No	零件编号 Part No	零部件名称 Description	数量 QTY	备注 Remark	Supplier Part No
1	05787-0820A	Bolt	4		
2	69401-30T01	Bracket L.H	1		
3	06170-1000A	Nut	1		
4	00093-1001A	Washer	1		
5	69404-30T01	Bushing,nylon	6		
6	694A0-30T01	Lever,lift	1		
7	694B0-30T01	Lever,tilt	1		
8	694F0-30T01	Lever,third	1		
9	694C0-30T11	Knob, lifting	1		
10	69403-30T01	Shaft, control	1		
11	00882-08240	Pin	3		
12	69402-30T01	Bracker R.H.	1		
13	00091-0220	Pin,cotter	3		
14	00097-0801A	shim	3		
15	694E0-30T01	Joint	3		
16	694D0-30T11	Knob,tilting	1		
17	694G0-30T11	Knob,sideshift	1		
18	00091-12120	Pin,cotter	3		
19	40004-30T01	Pin	3		
20	00097-0501A	shim	3		
21	695A0-30T11	Multi-way valve(third throw)	1		
22	40007-30T01	Cover	3		6048-10021
23	69700A-30T01	Braket	1		

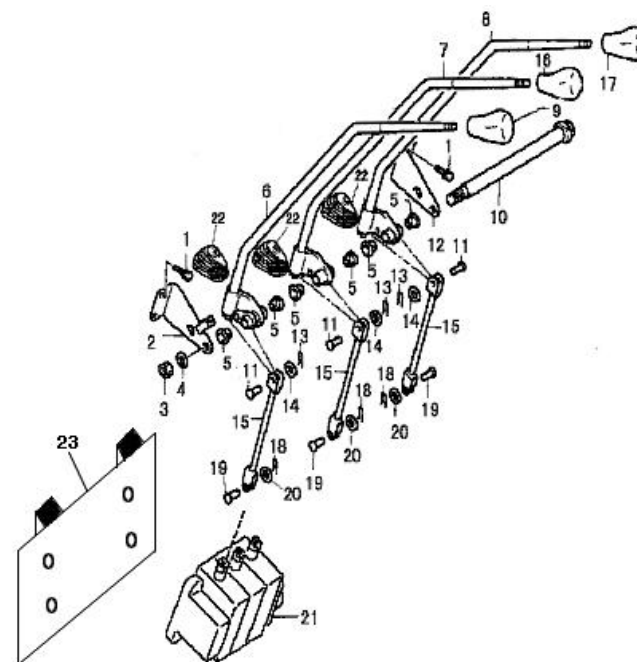
备注2
Remark2

操纵杆总成（三联）

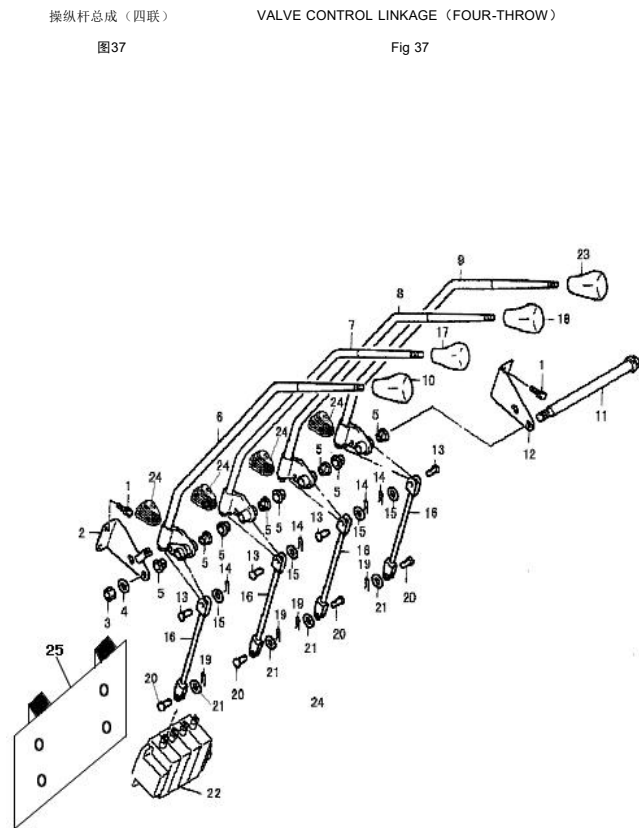
VALVE CONTROL LINKAGE (Three-THROW)

图36

Fig 36

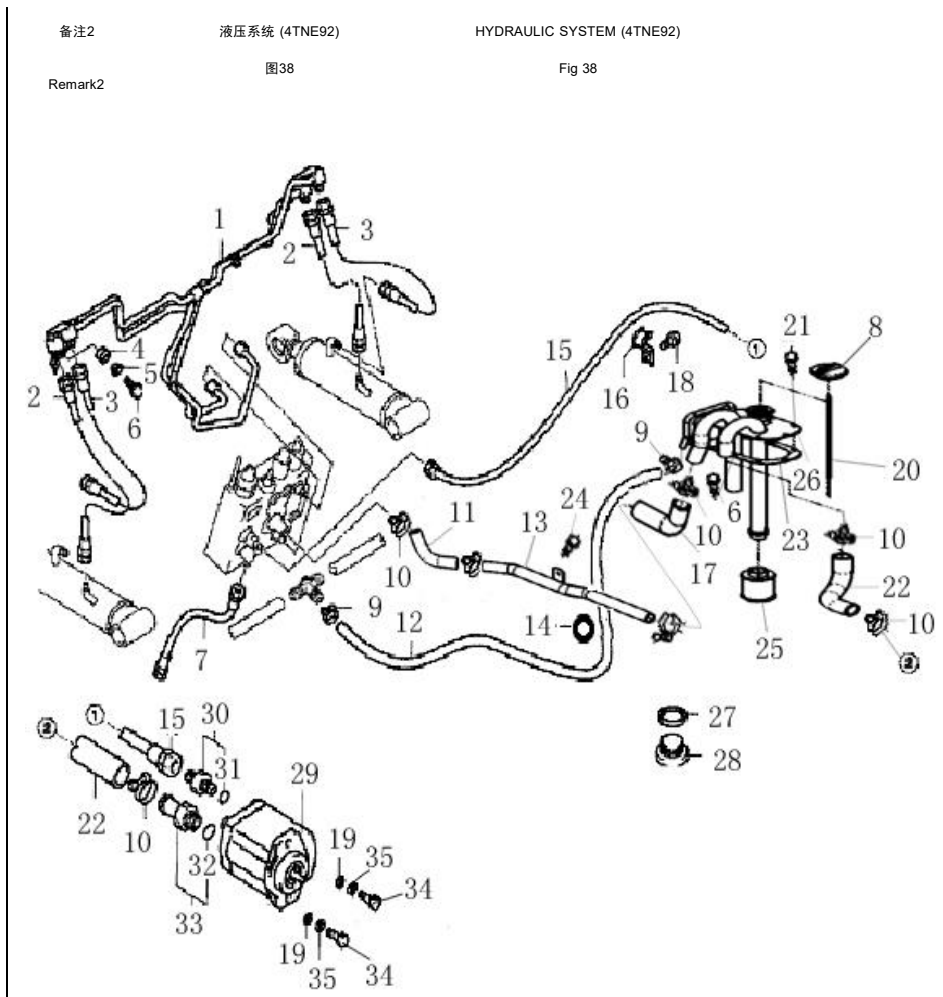


序号	零件编号	零部件名称	数量	备注	供方零件号	备注2
Item No	Part No	Description	QTY	Remark	Supplier Part No	Remark2
1	05787-0820A	Bolt	4	螺栓M8x20		
2	69401-30T01	Bracket L.H.	1	左固定支架		
3	06170-1000A	Nut	1	螺母M10		
4	00093-1001A	Washer	1	垫圈10		
5	69404-30T01	bushing,nylon	8	尼龙石墨套φ12		
6	694A0-30T01	Lever,lift	1	提升操纵杆总成		
7	694B0-30T01	Lever,tilt	1	倾斜操纵杆总成		
8	694F0-30T01	Lever,third	1	侧移/第三片阀操纵杆总成		
9	694G0-30T01	Lever,fourth	1	旋转操纵杆总成/第四片阀杆		
10	694C0-30T11	Knob, lifting	1	起升手柄球		
11	69403-30T01B	Shaft, valve	1	操纵手柄连接杆		
12	69402-30T01	Bracket R.H.	1	右固定支架		
13	00882-08240	Pin	1	销轴8x24		
14	00091-0220	Pin,cotter	4	开口销2x20		
15	00097-0801A	Shim	4	垫圈8		
16	694E0-30T01	Joint	4	连接杆总成		
17	694D0-30T11	Knob,tilting	1	倾斜手柄球		
18	694G0-30T11	Knob,sideshift	1	侧移手柄球		
19	00091-12120	Pin,cotter	4	开口销1.2x12		
20	40004-30T01	Pin	4	销轴(操纵杆)		
21	00097-0501A	shim	4	垫圈5		
22	695B0-30T11	Multi-way valve(fouth throw)	1	多路换向阀(四联)		
23	694C3-30T11	Knob,fourth valve	1	空白手柄球		
24	40007-30T01	Cover	4	护套	6048-10021	
25	69700B-30T01	Braket	1	固定板		



序号	零件编号	零部件名称	数量	备注
Item No	Part No	Description	QTY	Remark
1	69800-30T11	Steel pipe ass'y	1	倾斜缸钢管总成
2	69J00-15T11	Hose H.P.	2	倾斜缸高压胶管 (短)
3	69H00-15T11	Hose H.P.	2	倾斜缸高压胶管 (长)
4	69804-30T11	Rubber	2	橡胶垫
5	69805-30T11	Bushing	2	钢管套
6	05781-0830A	Bolt	2	螺栓M8x30
7	69E00-15T11	Hose H.P.	1	转向器高压胶管
8	50010-30T11	Oiling cap ass'y	1	加油盖总成
9	00160-30T11	Clip	1	双钢丝卡箍φ9-16
10	35410-30T11	Clip	2	双钢丝卡箍φ35-41
11	69003-30T11	Hose	1	分配器上回油管
12	12120-30T11	Hose	1	胶管φ12x1200
13	69900-15T11	Steel pipe ass'y	1	分配器回油管总成
14	69806-30T11	Clip	4	卡扣
15	69B00-15T11	Hose H.P.	1	分配器高压胶管
16	52104-30T11	Clip	1	油泵进油管夹
17	69004-30T11	Hose	1	分配器下回油管
18	05787-0816A	Bolt	1	螺栓M8x16
19	00097-1001A	Washer	2	垫圈10
20	69013-30T11	oil measuer	1	液压油尺
21	05786-0820A	Bolt	8	螺栓M8×1×20
22	69005-15T11	Hose H.P.	1	齿轮泵进油管
23	17303-15T11	Cover gasket	1	液压油箱盖垫
24	05781-0816A	Bolt	4	螺栓M8x16
25	17502-30T11	Strainer	1	滤油器
26	17500-15T11	Cover Plate ass'y	1	液压油箱盖总成
27	00987-2400A	Gasket	1	组合垫24
28	50306-30T01	Plug	1	放油螺塞
29	Y69100-25T11	Hydraulic pump	1	齿轮泵
30	69300-30T11	Connector	1	油泵出油接头

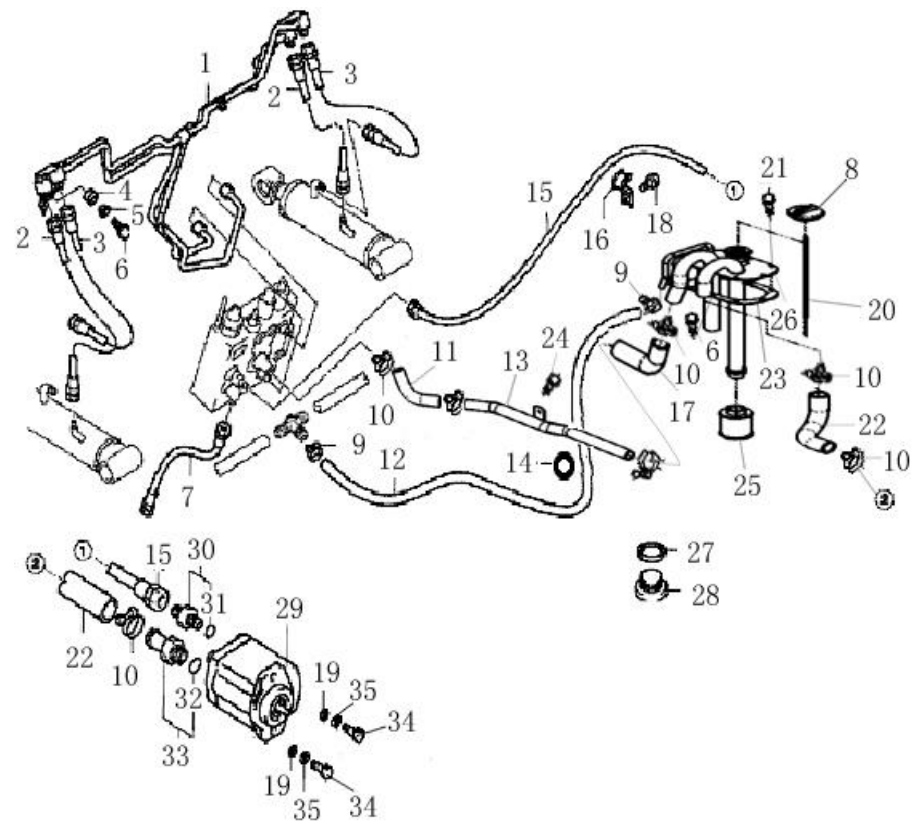
供方零件号	Supplier Part No
23657-53101G	M8x1x20



序号	零件编号	零部件名称	数量	备注	供方零件号	备注2
Item No	Part No	Description	QTY	Remark	Supplier Part No	Remark2
31	01235-17265	O-ring	1			
32	01235-28355	O-ring	1			
33	69200-30T11	Connector	1		SGP1A31.9D2 H9-R438	
34	05782-1050A	Bolt	2		SGP1A31.9D2 H9-L438	
35	00093-1001A	shim	2			

液压系统
图38

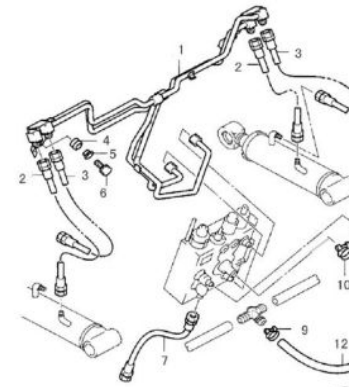
HYDRAULIC SYSTEM
Fig 38



序号	图号	零部件名称	数量	备注	供方零件号	备注2
Item No	Part No	Description	QTY	Remark	Supplier Part No	Remark2
1	69800-30T11	Steel pipe ass'y 倾斜缸钢管总成	1			
2	69H00-15T11	Hose H.P. 倾斜缸高压胶管 (短)	2			
3	69J00-15T11	Hose H.P. 倾斜缸高压胶管 (长)	2			
4	69804-30T11	Rubber 橡胶垫	2			
5	69805-30T11	Bushing 钢管套	2			
6	05787-0830A	Bolt 螺栓M8×30	4			
7	69E00-15T11	Hose H.P. 转向器高压胶管	1			
8	50010-30T11	Oiling cap ass'y 加油盖总成	1			
9	00160-30T11	Clip 双钢丝卡箍φ9-16	1			
10	35410-30T11	Clip 双钢丝卡箍φ35-41	2			
11	69003-30T11	Hose 分配器上回油管	1			
12	12120-15T11	Hose 胶管φ12×1200	1			
13	69900-15T11	Steel pipe ass'y 分配器回油钢管总成	1			
14	69806-30T11	Clip 卡扣	4			
15	M69006-15T11	hose 齿轮泵出油管	1	1600		
16	52104-30T01	Clip 油泵进油管夹	1			
17	69004-30T11	Hose 分配器下回油管	1			
18	05781-0816A	Bolt 螺栓M8×16	1			
19	69013-30T11	oil measuer 液压油尺	1			
20	00097-0801A	shim 垫圈8	8			
21	05786-0820A	Bolt 螺栓M8×1×20	6			
22	M69005-15T12	Hose H.P. 齿轮泵进油管	1			
23	17302-15T11	Cover gasket 油箱盖密封垫	2			
24	05782-0816A	Bolt 螺栓M8×16	4			
25	17502-30T11	Strainer 滤油器	1			
26	17500-15T11	Cover Plate ass'y 液压油箱盖总成	1			17302-15T11
27	00987-2400A	Gasket 组合垫24	1			

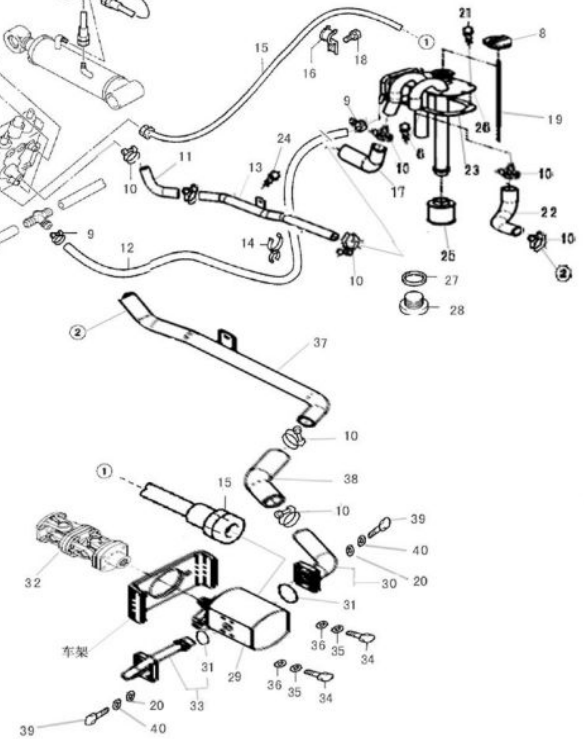
液压系统(Mazda F2)

图38-1



HYDRAULIC SYSTEM(Mazda f2)

Fig 38-1



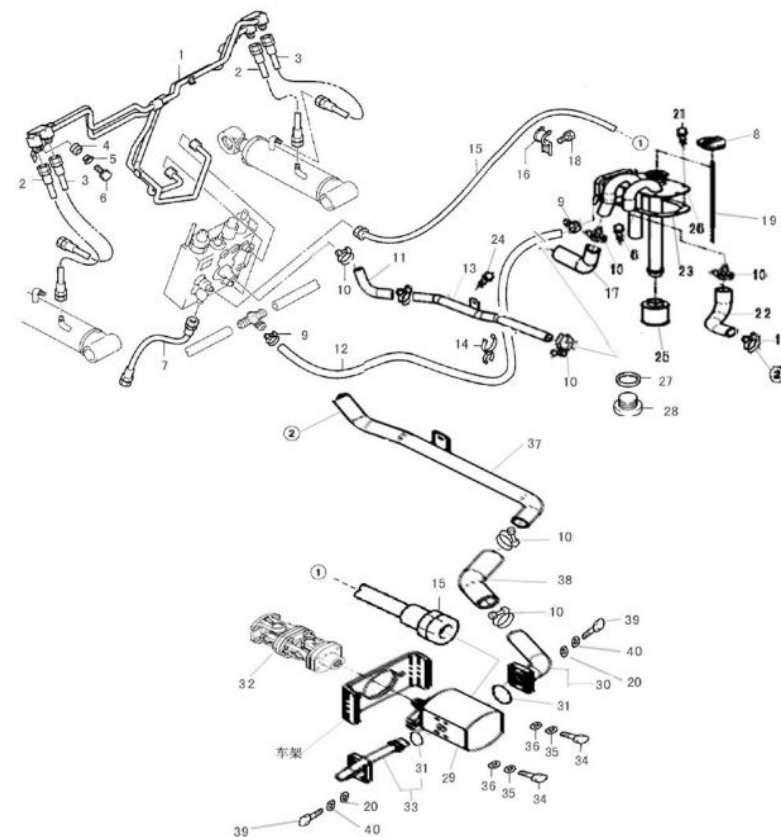
序号	图号	零部件名称	数量	备注	供方零件号	备注2
Item No	Part No	Description	QTY	Remark	Supplier Part No	Remark2
28	50306-30T01	Plug 放油螺塞	1			
29	M69100-30T11	Hydraulic pump 齿轮泵	1		CBFZ-F32AFXH	
30	M11600-15T11	Connector 齿轮泵进油接头总成	1			
31	01235-28355	O-ring O形圈28×3.55	2			
32	M11700-15T11	shaft 传动轴	1			
33	M11500-15T12	Connector 齿轮泵出油接头总成	1			
34	05782-1040A	Bolt 螺栓M10×40	2			
35	00097-1001A	shim 垫圈10	2			
36	00093-1001A	shim 垫圈10	2			
37	M699A0-15T11	pipe 齿轮泵吸油管总成	1			
38	M69004-15T11	Hose 分配器下回油管	1			
39	05781-00820	Bolt 螺栓M8×20	8			
40	00093-0801A	shim 垫圈8	8			

液压系统(Mazda F2.0)

HYDRAULIC SYSTEM(Mazda)

图38-1

Fig 38-1



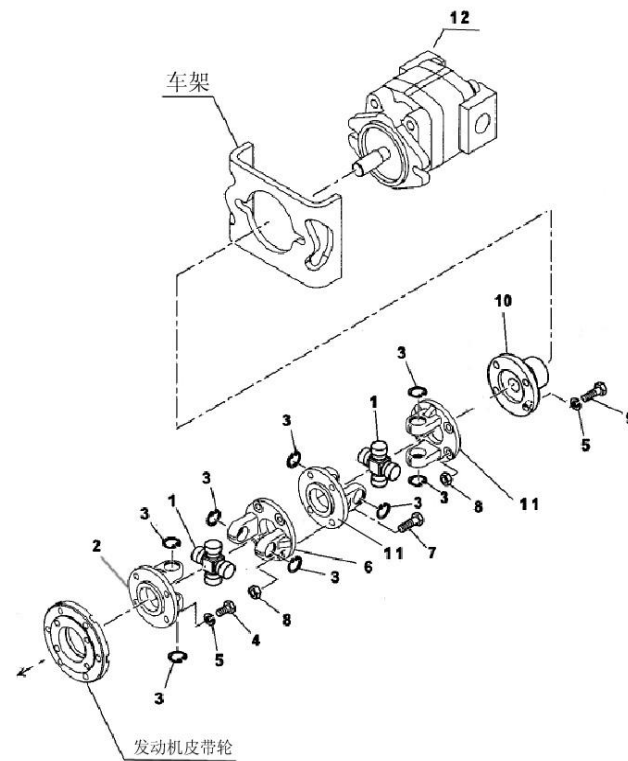
序号	图号	零部件名称	数量	备注	供方零件号	备注2
Item No	Part No	Description	QTY	Remark	Supplier Part No	Remark2
1	M11703-25T11	shaft 十字轴	2			M11700-15T11
2	M11701-25T11	flange 连接凸缘	1			M11700-15T11
3	00893-2000A	Snap ring 挡圈20	8		GB893.1-86	M11700-15T11
4	05785-0820A	Bolt M8×1.0×20 螺栓M8×1.0×20	4			M11700-15T11
5	00093-0801A	shim 垫圈8	12			M11700-15T11
6	M11702-15T11	flange 连接凸缘(前)	1			M11700-15T11
7	05781-00835	Bolt 螺栓M8×35	4			M11700-15T11
8	06170-0800A	Nut 螺母M8	8			M11700-15T11
9	05781-00825	Bolt 螺栓M8×25	4			M11700-15T11
10	M11705-15T11	flange 齿轮泵连接盘	1			M11700-15T11
11	M11706-15T11	flange 连接凸缘(后)	2			M11700-15T11

万向传动轴(Mazda F2.0)

图38-2

Shaft - Hydraulic pump

Fig 38-2



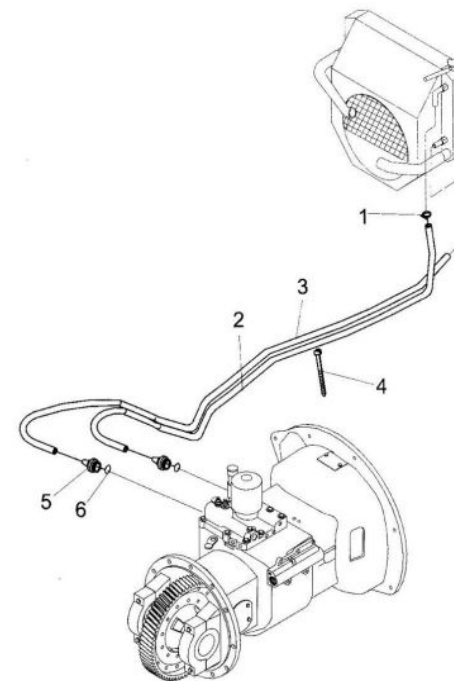
序号	零件编号	零部件名称	数量	备注	供方零件号	备注2
Item No	Part No	Description	QTY	Remark	Supplier Part No	Remark2
1	690A1-30T11	Clip	4	双钢丝卡箍φ13-19		
2	690A2-15T11	Hose,cooling	1	油冷却胶管		
	M690A2-15T11	Hose,cooling	1	油冷却胶管		
3	690A3-15T11	Hose,cooling	1	油冷却胶管		
	M690A3-15T11	Hose,cooling	1	油冷却胶管		
4	690A4-30T11	Band	2	捆扎带ZD200x8		
5	690A5-30T11	Connector	2	直通接头		
6	690A6-30T11	Seal	2	组合密封垫圈 14		

变频器油冷却系统

图39

TOR-CON OIL COOLING SYSTEM

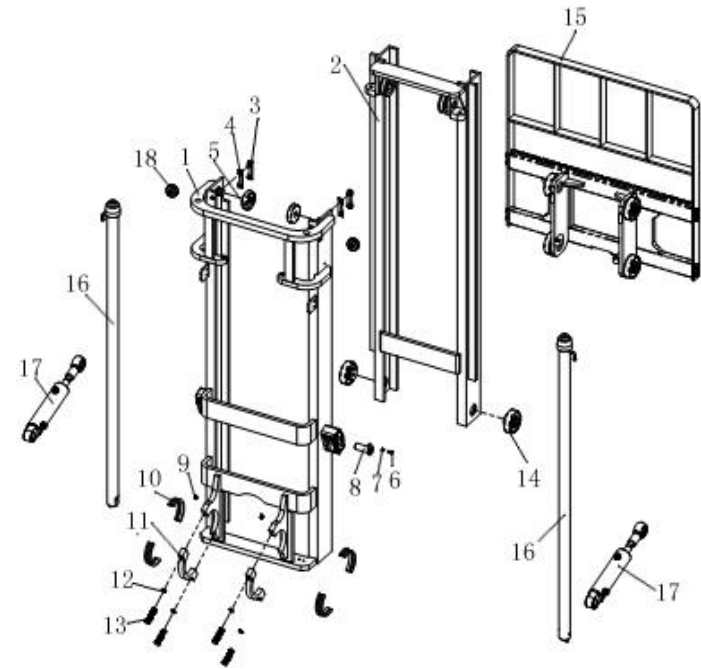
Fig 39



序号	零件编号	零部件名称	数量	备注	供方零件号	备注2
Item No	Part No	Description	QTY	Remark	Supplier Part No	Remark2
1	59100-15T01	Mast,outer	1			
	110000-15TS01	Mast,outer	1	扇形板驱动桥		
2	59200-15T01	Mast,inner	1			
3	58A03-30T11	Plate,guide	2			
4	58A04-30T01	Shim, adjusting	2			
5	59117-15T11	Roller	2		180706KT	
6	05782-0820A	Bolt	2			
7	00093-0801A	Washer	2			
8	58A08-15T02	Pin axle	2			
9	01153-1045L	Cup	2			
10	58A03-15T11	Bushing	4			
11	58A02-15T01	Cap,bearing	2			
12	00093-1601A	Shim	4			
13	05785-1470A	Bolt	4			
14	59A00-15T11	Roller	2			
15	59500-15T01	Carriage ass'y	1			
16	58300-15T11	Lift cylinder	2			
	58300-15330	Lift cylinder	2			
	58300-15400	Lift cylinder	2			
17	586A0-15T11	Tilt cylinder	2			
18	59120-30T11	side roller	2		CN-4	

门架 (2W)

图40



MAST (2W)

Fig 40

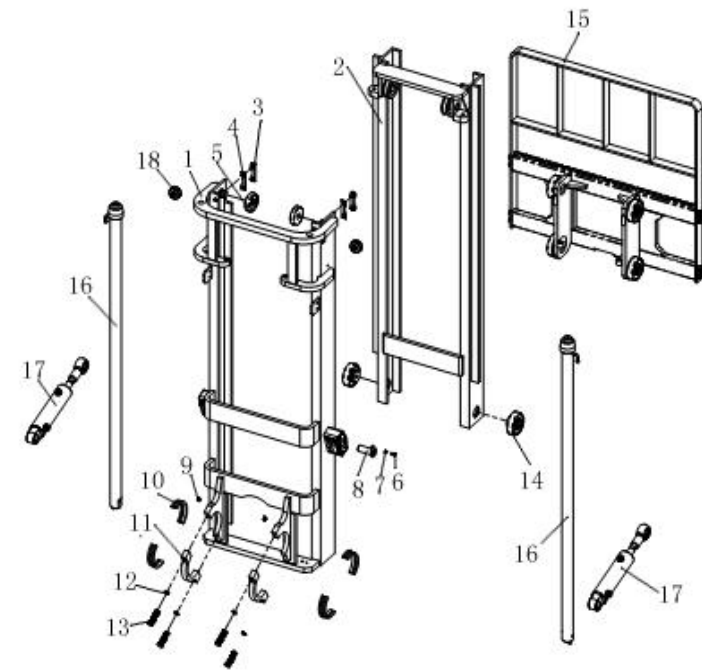
序号 Item No	零件编号 Part No	零部件名称 Description	数量 QTY	备注 Remark	供方零件号 Supplier Part No	备注2 Remark2
		门架（2W）高度系列 Mast(2W) Series				
	58A00-15T01	MAST ASSY 门架总成	1	2W300		
	15-2W330-58A00	MAST ASSY 门架总成	1	2W330		
	18-2W330-58A00	MAST ASSY 门架总成	1	2W330		
	15-2W400-58A00	MAST ASSY 门架总成	1	2W400		
	18-2W400-58A00	MAST ASSY 门架总成	1	2W400		

门架（2W）

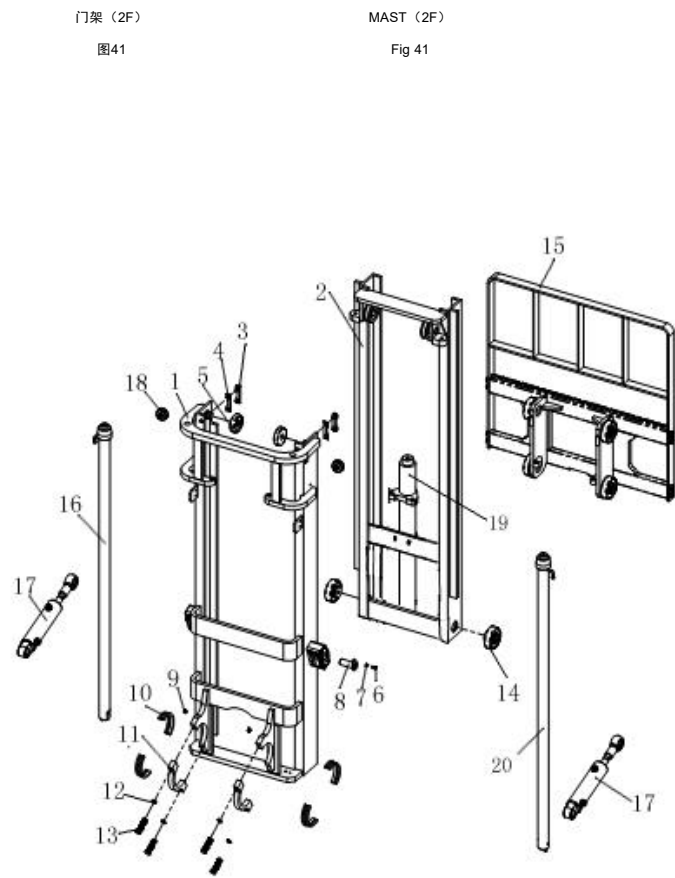
图40

MAST（2W）

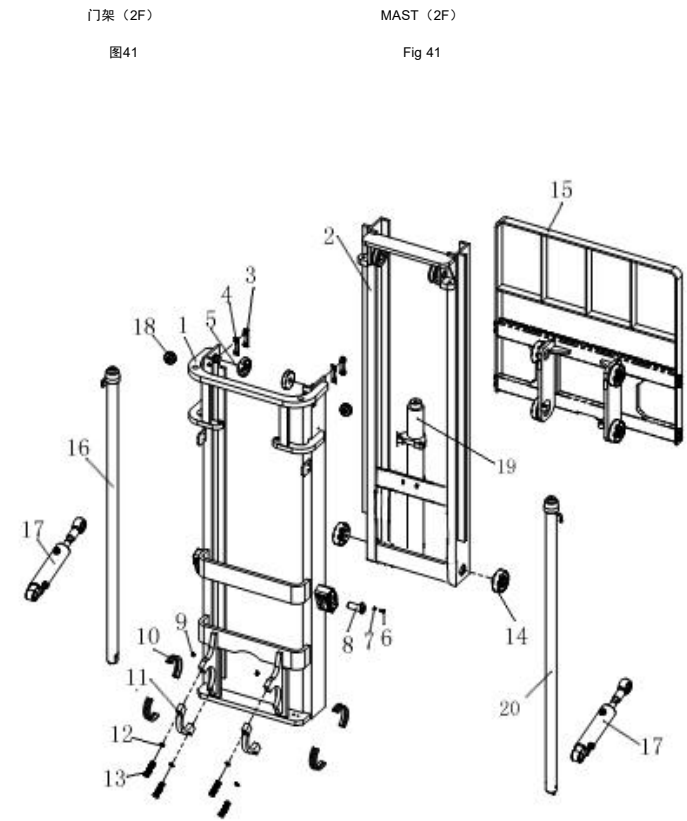
Fig 40



序号	零件编号	零部件名称	数量	备注	供方零件号	备注2
Item No	Part No	Description	QTY	Remark	Supplier Part No	Remark2
1	5F100-15T01	Mast,outer	1			
	11F000-15TS01	Mast,outer	1	扇形板驱动桥		
2	5F200-15T01	Mast,inner	1			
3	58A03-30T11	Plate,guide	2			
4	58A04-30T01	Shim, adjusting	2			
5	59117-15T11	Roller	2		180706KT	
6	05782-0820A	Bolt	2			
7	00093-0801A	Washer	2			
8	58A08-15T02	Pin axle	2			
9	01153-1045L	Cup	2			
10	58A03-15T11	Bushing	4			
11	58A02-15T01	Cap,bearing	2			
12	00093-1601A	Shim	4			
13	05785-1470A	Bolt	4			
14	59A00-15T11	Roller	2			
15	59500-15T01	Carriage ass'y	1			
16	5F300-15T11	Lift cylinder	1	2F300		
	5F300-15330	Lift cylinder,left	1	2F330		
	5F300-15360	Lift cylinder,left	1	2F360		
17	58600-15T11	Tilt cylinder	2			
18	59120-30T11	side roller	2		CN-4	
19	5F700-15430	free lift cyl.	1	2F300		
	5F700-15480	free lift cyl.	1	2F330		
	5F700-15360	free lift cyl.	1	2F360		
20	5F400-15T11	Lift cylinder,left	1	2F300		
	5F400-15330	Lift cylinder,left	1	2F330		
	5F400-15360	Lift cylinder,left	1	2F360		



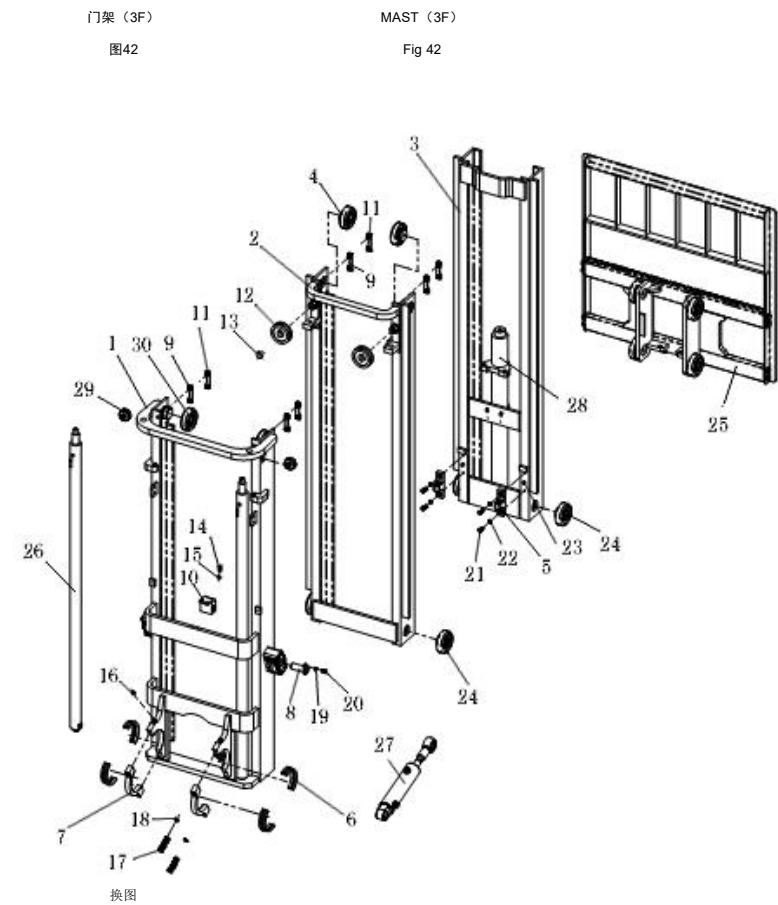
序号 Item No	零件编号 Part No	零部件名称 Description	数量 QTY	备注 Remark	供方零件号 Supplier Part No	备注2 Remark2
门架（2F）高度系列 Mast(2F) Series						
	5F000-15T01	Mast Ass'y	1			
	2F330-5F000	Mast Ass'y	1			
	2F350-5F000	Mast Ass'y	1			



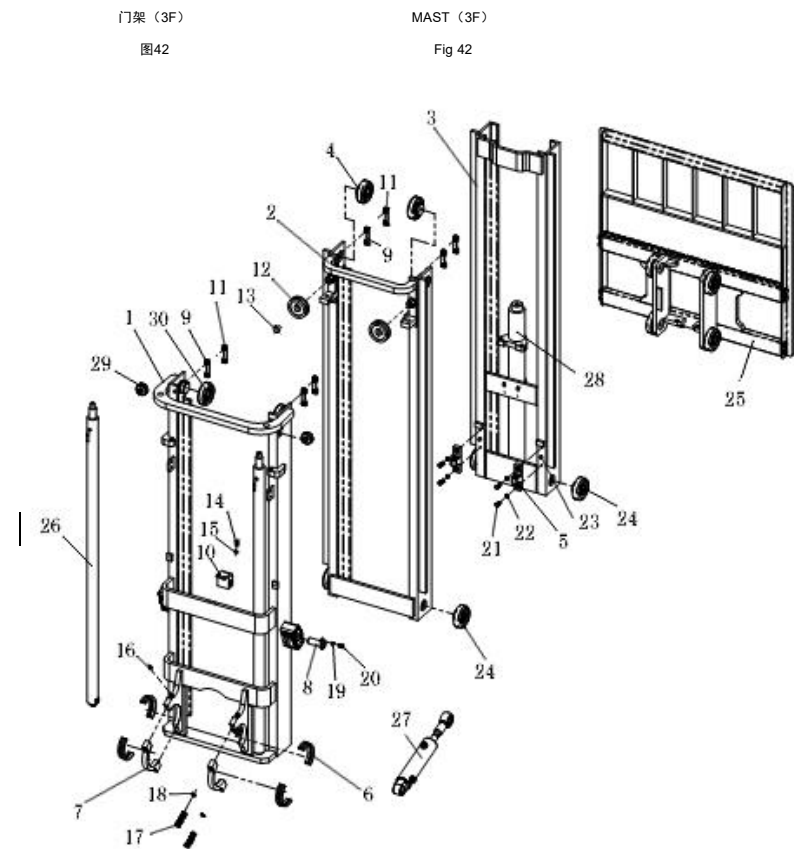
门架（2F）
图41

MAST（2F）
Fig 41

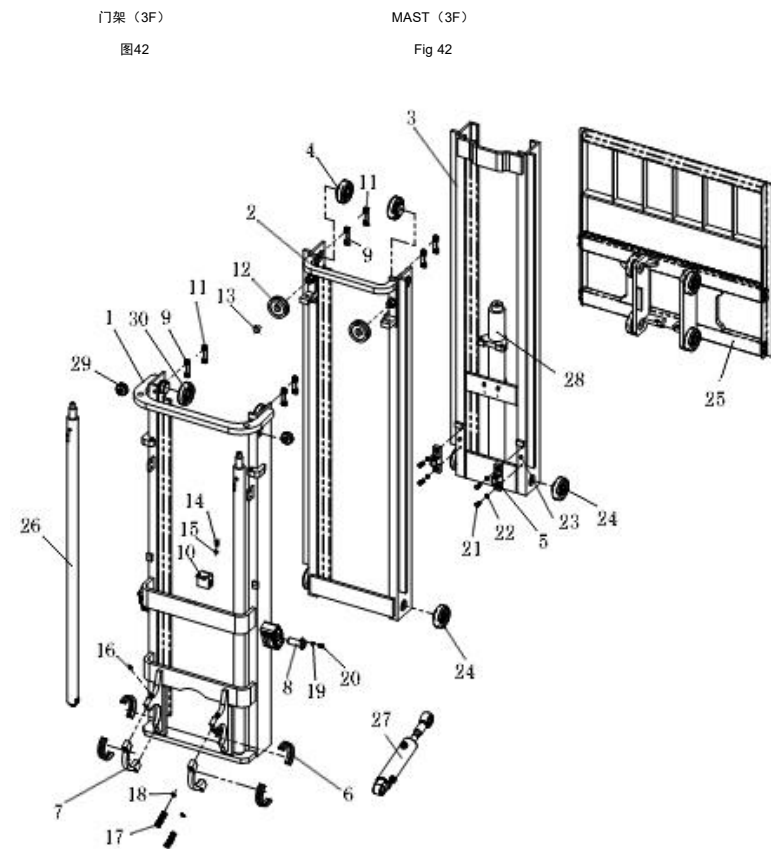
序号	零件编号	零部件名称	数量	备注	供方零件号	备注2
Item No	Part No	Description	QTY	Remark	Supplier Part No	Remark2
1	57S00-15T01	Mast,outer	1			
	11S000-15TS01	Mast,outer	1	扇形板驱动桥		
2	56S00-15T01	Mast,middle	1			
3	55S00-15T01	Mast,inner	1			
4	59A00-15T11	Roller	2			
5	55S01-15T01	Cup,chain	2			
6	58A03-15T11	Bushing	4			
7	58A02-15T01	Cap,bearing	2			
8	58A08-15T02	Pin,tilt cylinder	2			
9	58A04-30T01	Shim, adjusting	4			
10	57S11-30T01	Three way connector	1		K25S111000	
11	58A03-30T11	Plate,guide	4			
12	59800-15T11	Sheave	2	780307		
13	08942-4000B	Clip	2	卡簧40		
14	05782-0820A	Bolt	2	螺栓M8x20		
15	00093-0801A	Washer	2	垫圈8		
16	01153-1045L	Cup	2	油杯45°		
17	05785-1470A	Bolt	4	螺栓M14x1.5x70		
18	00093-1601A	Shim	4	垫圈14		
19	05782-0820A	Bolt	4	螺栓M8x20		
20	00093-0801A	Washer	4	垫圈8		
21	00070-1030A	Bolt	4	螺钉M10x1.25x25		
22	00093-1001A	Shim	4	垫圈10		
23	00119-1230B	Pin	2	销D12x30		
24	59A00-15T11	Roller	4			
25	54S00-15T01	Carriage ass'y	1			
26	48S00-15T11	Lift cylinder	2	3F450		
	48S00-15430	Lift cylinder	2	3F430		



序号	零件编号	零部件名称	数量	备注	供方零件号	备注2
Item No	Part No	Description	QTY	Remark		Remark2
	48S00-15480	Lift cylinder 起升油缸	2	3F480		
	48S00-15500	Lift cylinder 起升油缸	2	3F500		
	48S00-15550	Lift cylinder 起升油缸	2	3F550		
	48S00-15600	Lift cylinder 起升油缸	2	3F600		
27	58S00-15T11	Tilt cylinder 倾斜油缸	2	<5500mm		
	58S00-15T12	Tilt cylinder 倾斜油缸	2	≥5500mm		
28	5F700-15T11	Free lift cylinder 自由起升油缸	1	3F450		
	5F700-15430	Free lift cylinder 自由起升油缸	1	3F430		
	5F700-15480	Free lift cylinder 自由起升油缸	1	3F480		
	5F700-15500	Free lift cylinder 自由起升油缸	1	3F500		
	5F700-15550	Free lift cylinder 自由起升油缸	1	3F550		
	5F700-15600	Free lift cylinder 自由起升油缸	1	3F600		
29	59120-30T11	side roller 侧滚轮	2		CN-4	
30	59117-30T11	Roller 滚轮	2			



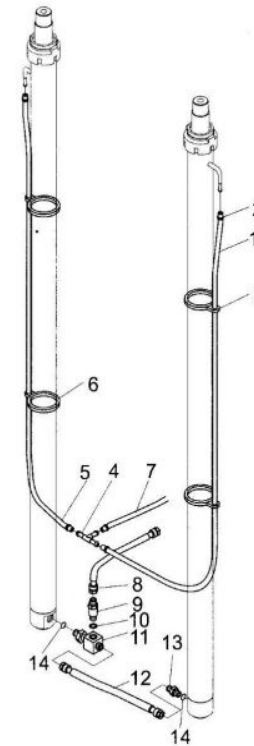
序号	零件编号	零部件名称	数量	备注	供方零件号	备注2
Item No	Part No	Description	QTY	Remark	Supplier Part No	Remark2
15-3F430-58S00		门架（3F）高度系列 Mast(3F) Series	1	3F430		
58S00-15T01		门架（3F）高度系列 Mast(3F) Series	1	3F450		
15-3F480-58S00		门架（3F）高度系列 Mast(3F) Series	1	3F480		
15-3F500-58S00		门架（3F）高度系列 Mast(3F) Series	1	3F500		
15-3F550-58S00		门架（3F）高度系列 Mast(3F) Series	1	3F550		
15-3F600-58S00		门架（3F）高度系列 Mast(3F) Series	1	3F600		



序号	零件编号	零部件名称	数量	备注	供方零件号	备注2
Item No	Part No	Description	QTY	Remark	Supplier Part No	Remark2
1	690B1-15T01	Tube vinyl 塑料回油管	1			
2	690B2-30T01	Clip 夹箍10-16	6			
3	690B3-30T01	Band 回油管管夹片	4			
4	69008-15T01	Three way connector 三通接头	1			
5	690B5-30T01	Tube vinyl 塑料回油管	1			
6	690B6-30T01	Band 回油管管夹片	4			
7	690B7-30T01	Tube vinyl 塑料回油管	1			
8	690B8-15T01	Hose H. P. 高压胶管	1			
9	59900-15T11	Flow regulator 限速阀	1			
10	690B9-30T11	Washer 组合垫圈22	1			
11	59600-30T11	Three way connector 三通接头	1			
12	69D00-15T01	Hose H P 高压胶管	1			
13	58A10-30T11	Through type connector 直通接头	1			
14	01235-22240	O-ring O形密封圈22x2.4	2			

门架管路系统(2W)

图43



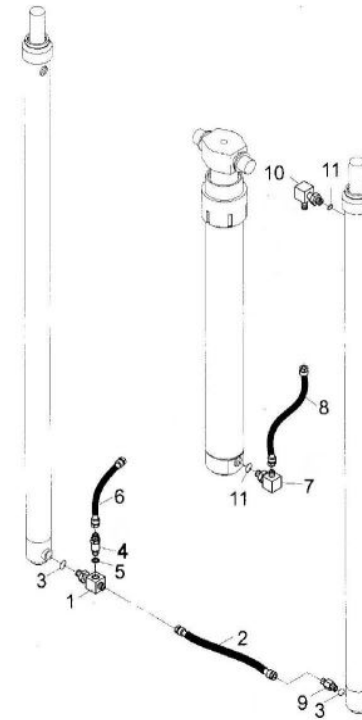
HYDRAULIC SYSTEM MAST(2W)

Fig 43

序号	零件编号	零部件名称	数量	备注	供方零件号	备注2
Item No	Part No	Description	QTY	Remark	Supplier Part No	Remark2
1	690B4-30T01	Three way connector 三通接头	1			
2	69D00-15T01	Hose H P 高压胶管	1			
3	01235-20240	O-ring O形密封圈20x2.4	2			
4	59900-15T11	Flow regulator 限速阀	1			
5	690B9-30T11	Washer 组合垫圈22	1			
6	690B8-30T01	Hose H. P. 高压胶管	1			
7	58S14-30T11	Connector 直角接头	1			
8	58F02-15T11	Hose H. P. 油管总成	1	2F300		
9	58A10-30T11	Through type connector 直通接头	1			
10	58S14-30T11	Connector 直角接头	1			
11	01235-22240	O-ring O形密封圈24x2.4	2			

门架管路系统(2F)

图44



HYDRAULIC SYSTEM MAST(2F)

Fig 44

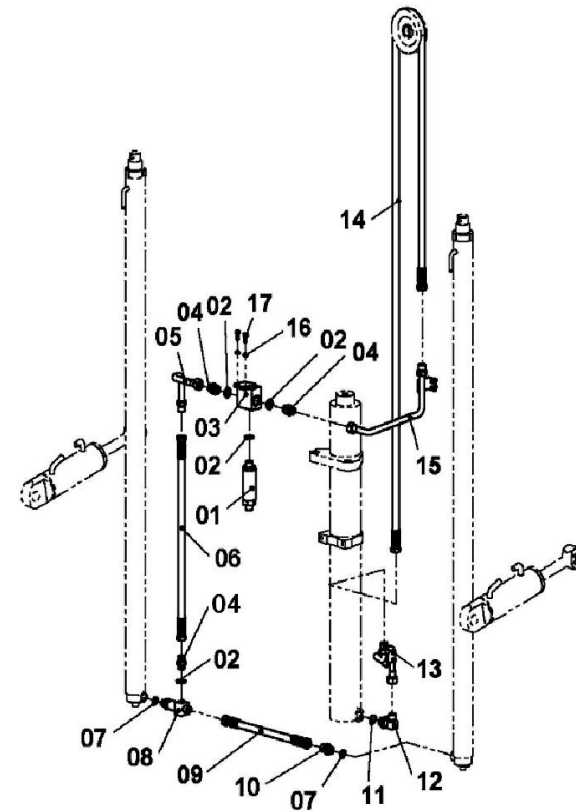
序号	零件编号	零部件名称	数量	备注	供方零件号	备注2
Item No	Part No	Description	QTY	Remark	Supplier Part No	Remark2
1	59900-15T11	Flow regulator 限速阀	1			
2	690B9-30T11	Washer 组合垫圈22	4			
3	57S11-30T01	Three way connector 三通	1			
4	58S05-30T11	Connector 三通下直通接头	3			
5	53S00-15T11	Hydraulic pipe ass'y 提升缸硬管总成	1			
6	58SA1-15T11	Hose,H.P ass'y 短高压胶管总成	1			
7	01235-20240	O-ring O形密封圈20x2.4	2			
8	59600-30T11	Three way connector 三通接头	1			
9	58SA2-15T11	Hose,H.P ass'y 高压胶管总成	1			
10	58A10-30T11	Through type connector 直通接头	1			
11	01235-22265	O-ring O形密封圈22x2.65	2			
12	58S14-30T11	Connector 直角接头总成	1			
13	51S00-15T11	Hydraulic pipe ass'y 中缸硬管总成	1			
14	58SA3-15T11	Hydraulic pipe ass'y 中缸高压胶管	1	3F450		
	58SA3-15430	Hydraulic pipe ass'y 中缸高压胶管	1	3F430		
	58SA3-15480	Hydraulic pipe ass'y 中缸高压胶管	1	3F480		
	58SA3-15500	Hydraulic pipe ass'y 中缸高压胶管	1	3F500		
	58SA3-15550	Hydraulic pipe ass'y 中缸高压胶管	1	3F550		
	58SA3-15600	Hydraulic pipe ass'y 中缸高压胶管	1	3F600		
15	52S00-15T11	Hydraulic pipe ass'y 三通硬管总成	1			
16	00093-0600A	Washer 垫圈8	2			
17	05782-0820A	Bolt 螺栓M8x20	2			

门架管路系统(3F)

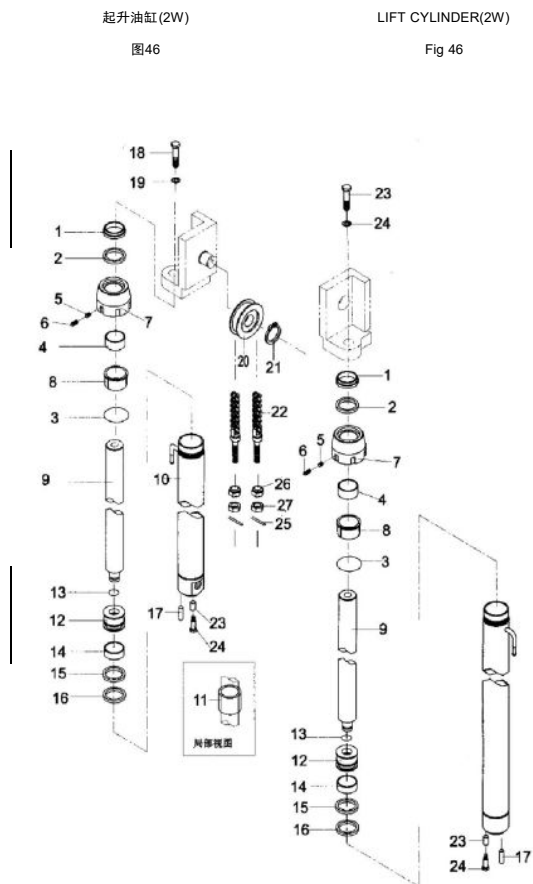
图45

HYDRAULIC SYSTEM MAST(3F)

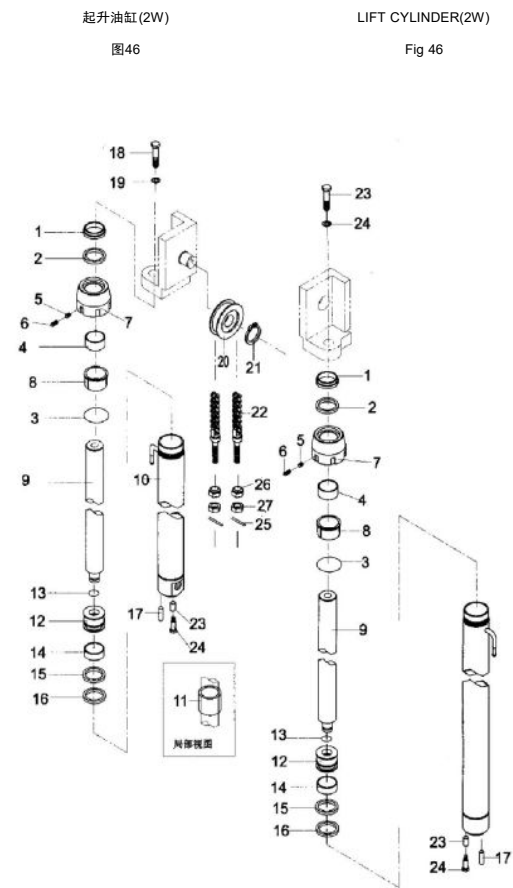
Fig 45



序号	零件编号	零部件名称	数量	备注	供方零件号	备注2
Item No	Part No	Description	QTY	Remark	Supplier Part No	Remark2
A	58300-15T11	Lift cylinder (Inc.01-17)	2		24495-42271	
1	58301-15T11	Seal 防尘圈	2	☆	23650-83581	
2	58302-15T11	Packing 密封圈	2	☆	D28B8-42611	
3	01235-48265	O-ring O型圈47.5×2.65	2	☆	23918-52161	
4	58303-15T11	Bushing 钢背轴承3630	4		Z6053-05562	
5	00091-3220B	Plug 塞子	2			
6	00078-0808A	Screw 螺钉M8×8	2		Z2113-04530	
7	58305-15T11	Cap 导向套	2		Z2113-04030	
8	58306-15T11	Sleeve 衬套	2		E30CD140002	
9	58307-15T11	Cylinder 缸筒体	2			
10	58308-15T11	Rod 活塞杆	1			
11	58309-15T11	Spacer 调整套	2			
12	58310-15T11	Piston 活塞	2		D20B8-49051B	
13	58311-15T11	Snap ring 钢丝挡圈	2		D20B8-49051B	
14	58312-15T11	Wearing 支承环	2	☆	Gcq056DJ.1-00	
15	58313-15T11	Snap ring 挡片	2	☆	Gcq050DJ.1-00	
16	58314-15T11	U-ring U型密封圈	2	☆	Gcq056DJ-01	
17	00119-1026B	Pin 销D10×26	2		Gcq050DJ-01	
18	05786-1450A	Bolt 螺栓M14×1.5×50	2		HRD20A8405/ D28A8-43131	
19	00093-1400A	Washer,lock 垫圈14	2		Gcq050DJ-02	
20	59800-15T11	Sheave 链轮	2		D28B8-42411B	
21	08941-4000A	Snap ring 弹性挡圈40	2		D20B8-42371B	
22	58500-15T11	Chain(Inc.33-35) 链条总成LH1223(包含33-	2		D20B8-42381	
23	58315-30T11	Sleeve 隔套	2		27978-42421	
24	05786-1225A	Bolt 螺栓M12×1.25×25	4			



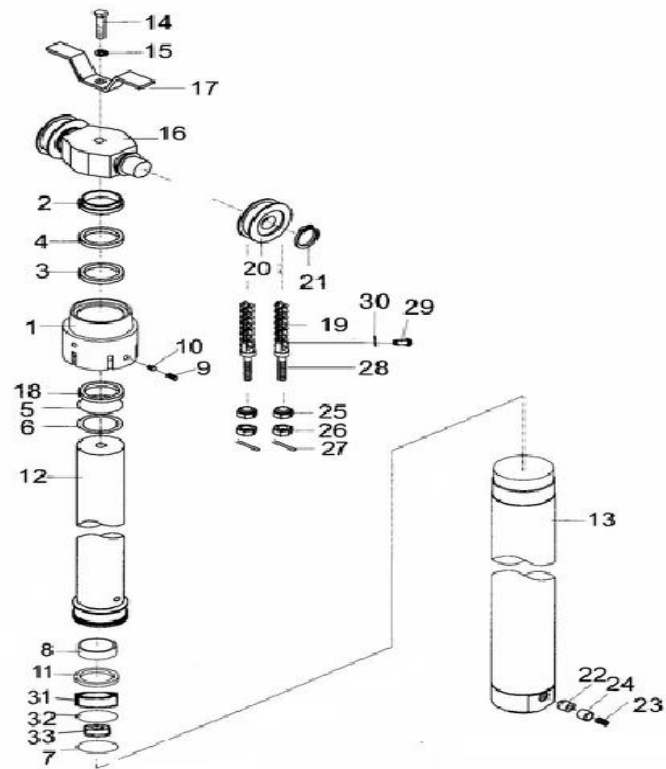
序号	零件编号	零部件名称	数量	备注	供方零件号	备注2
Item No	Part No	Description	QTY	Remark	Supplier Part No	Remark2
25	00119-0330B	Pin	4		24459-42291	
26	58317-15T11	Nut	4		23650-83531	
27	06171-1400A	Nut	4		24468-42001	
	58300-15T11-KIT	seal kit	1	all*parts	23650-83521	



序号	零件编号	零部件名称	数量	备注	供方零件号	备注2
Item No	Part No	Description	QTY	Remark	Supplier Part No	Remark2
1	49S01-15T11	Cap 导向套	1		GCQ085JC-02	
2	49S02-15T11	Dust ring 防尘圈55x65x8/6.5	1	☆	ME-3-60	
3	49S08-15T11	密封圈55x65x6	1	☆	27970-82521	
4	49S04-15T11	Snap ring 挡片55X65X3	1		B6052-00012	
5	01235-10031	O-ring seal O形圈74.4x3.1	1	☆	Z6053-08443	
6	49S05-15T11	Snap ring 挡圈	1		B6052-00022	
7	49S018-15T11	O-ring seal O型密封圈d15.8*2.4	1	☆	GN1766FO	
8	49S07-15T11	Wearing 支承环D75x20x2.5	1	☆	22518-45141	
9	00071-0610A	Screw 螺钉M5x5	1		B8032-05005	
10	49S12-30T11	Shim 垫片	1		Q70B0-82141	
11	49S03-15T11	washer 组合密封圈70X56X6.3	1	☆	FU0977H0	
12	49S13-15T11	Piston rod ass'y 柱塞杆总成	1		GCQ85JC-01&GCQ085H	
13	49S14-15T11	Cylinder body (front) 缸体	1		GCQ085JC.1-00	
14	05785-1660A	Bolt 螺栓M16x1.5x60	1			
15	00093-1600A	Washer, lock 垫圈16	1			
16	58S04-15T01	Sheave seat 链轮轴	1			
17	58S21-30T01	Stopper, chain 护链板	1			
18	49S09-15T11	Bushing 钢背轴承5040	1		Z2114-06035	
19	52S00-15T01	Chain ass'y 链条总成	2			
20	59800-15T11	Sheave 链轮	2		780708K1S	
21	08941-4000A	Snap ring 挡圈40	2		GCQ085HST-001	
22	49S10-15T11	Spool 阀芯	1		GCQ085HST-04	
23	49S11-15T11	Spring 弹簧	1			
24	49S15-15T11	Seat, spring 弹簧座	1			
25	58317-15T11	Nut 球面螺母	4			
26	06171-1415A	Nut 螺母M14x1.5	4			
27	00091-0330A	Pin 开口销3x30	4			
28	58501-15T01	Chain connector 链条接头	4			

自由起升油缸(2F/3F)

图47



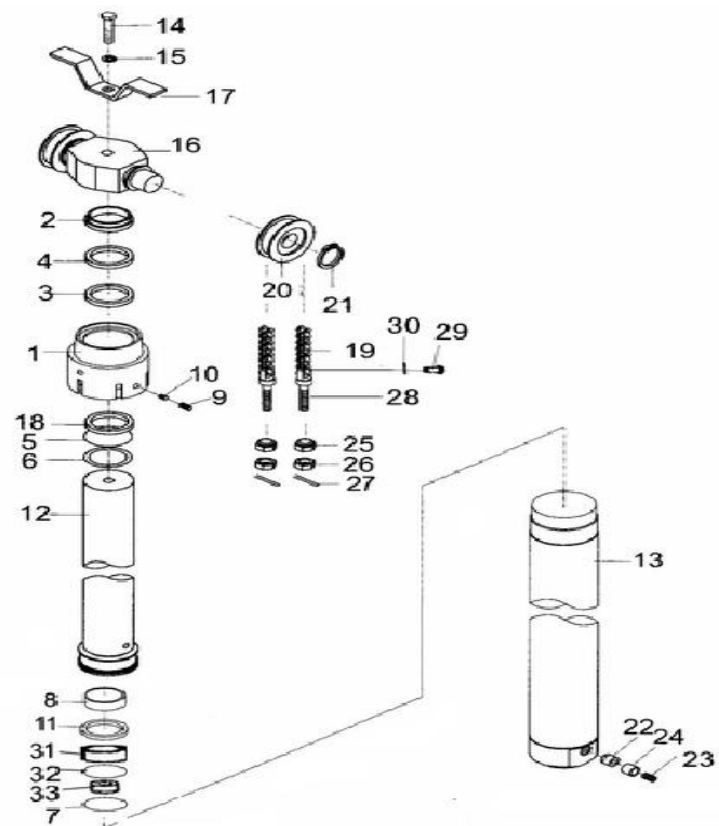
FREE LIFT CYLINDER(2F/3F)

Fig 47

序号	零件编号	零部件名称	数量	备注	供方零件号	备注2
Item No	Part No	Description	QTY	Remark	Supplier Part No	Remark2
29	58502-15T01	Pin	4			
30	00091-3220A	Pin	4			
31	49S015-15T11	Bonnet	1			
32	49S016-15T11	washer	1	☆		
33	49S017-15T11	Spool	1			
	49S00-15T11-KIT	Kit for free lift cyl.	1	All ☆Parts	Z6053-07753	

自由起升油缸(2F/3F)

图47



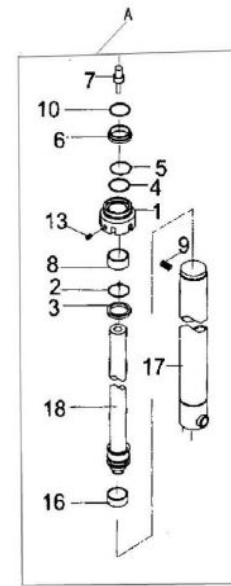
FREE LIFT CYLINDER(2F/3F)

Fig 47

序号	零件编号	零部件名称	数量	备注	供方零件号	备注2
Item No	Part No	Description	QTY	Remark	Supplier Part No	Remark2
1	5F301-15T11	Cap, cylinder	2		GCQ050HST2-02A	
2	01235-55310	O-ring seal	2	☆	Z6003-06003	
3	5F302-15T11	Snap ring	2		B6352-00018	
4	5F303-15T11	Yx-ring seal	2	☆	23918-52161	
5	5F304-15T11	Snap ring	2		23650-83531	
6	5F305-15T11	Dust ring	2	☆	23650-83581	
7	5F401-15T11	Joint rod	1		GCQ050DJ2-01	
8	5F306-15T11	Bushing	2		Z2116-04030	
9	00080-0608A	Screw	4		B1830-06008	
10	01235-26240	O-ring seal	1	☆	Z6003-02602	
11	5F307-15T11	Spool	1			
12	5F308-15T11	Spring	1		GCQ050HST2-06	
13	5F309-15T11	Plug	2		Q/ZB223.1	
14	5F314-15T11	Cylinder body (R)	1			
15	5F313-15T11	Piston rod ass' y -R	1			
16	5F311-15T11	Wearing	2	☆	GCQ050HST2-08	
17	5F312-15T11	Cylinder body (L)	1			
18	5F402-15T11	Piston rod ass' y (L)	1			
	5F300-15T11-KIT	Kit for lift cyl.	1	All ☆Parts		

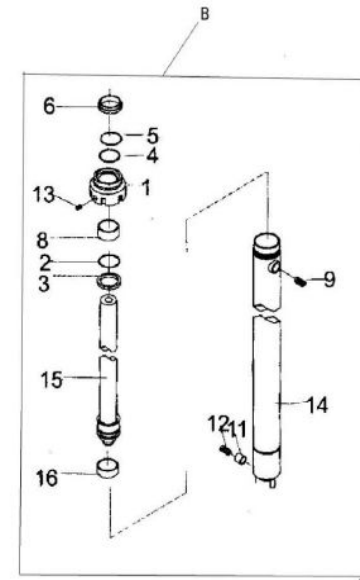
起升油缸 (2F)

图48



LIFT CYLINDER (2F)

Fig 48



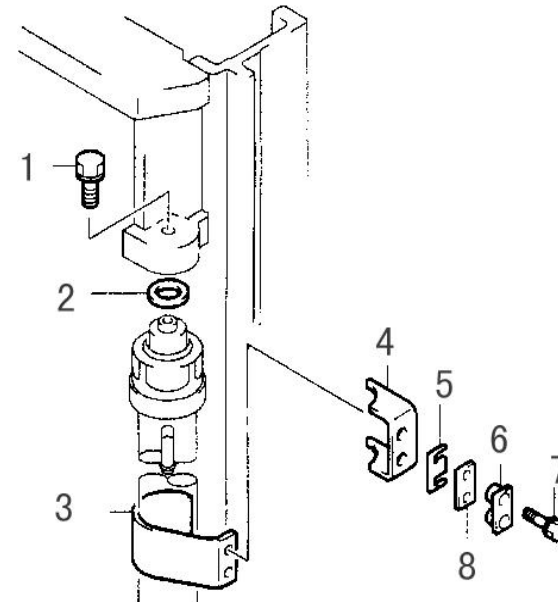
序号	零件编号	零部件名称	数量	备注	供方零件号	备注2
Item No	Part No	Description	QTY	Remark	Supplier Part No	Remark2
1	05786-1050B	Bolt	2			
2	58A14-15T01	Spacer	2组			
3	58200-15T01	Support ,cylinder	2			
4	58A05-15T01	Support	2			
5	58A12-30T01	Shim	2组			
6	58A06-30T01	Spacer	2			
7	05783-1035B	Bolt	4			
8	58A13-30T01	Cushion	2			

起升油缸安装

图49

LIFT CYLINDER MOUNT

Fig 49



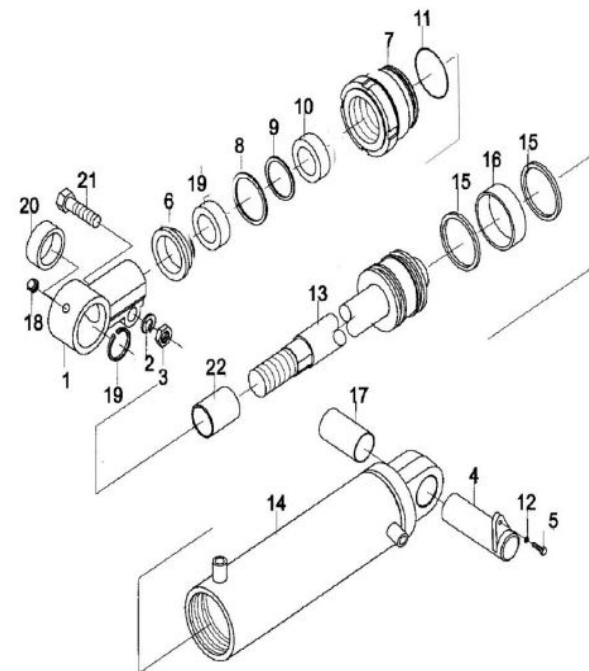
序号	零件编号	零部件名称	数量	备注	供方零件号	备注2
Item No	Part No	Description	QTY	Remark	Supplier Part No	Remark2
1	58603-15T11	Ear ring 耳环	2		HRD61F8502	
2	00093-1400A	washer 垫圈	2		B5050-00014	
3	06171-1415A	nut 螺母M14	2		B4123-00014	
4	50600-15T02	Pin 倾斜油缸销轴	2			
5	05783-0820A	Bolt 螺栓M8×20	2			
6	58606-15T11	washer 防尘圈47*30*7	2		24248-52341	
7	58602-15T11	Guide Sleeve 导向套	2		D10B8-52051	
8	58607-15T11	Snap ring 挡圈	2	☆	24248-52351	
9	58605-15T11	Shim 挡片30*43*3	2	☆	24248-52331	
10	58609-15T11	Yx-ring U型密封圈30*43*10	2	☆	24248-52321	
11	58A11-15T11	O-ring O型密封圈63*3.1	2	☆	Z6003-06303	
12	00093-0800A	washer 垫圈8	2			
13	58601-15T11	Body,piston ass'y 活塞体	2		X063DJ.1	
14	58610-15T11	Tube,cylinder ass'y 缸筒总成	2		X063DJ.2	
15	58613-15T11	U-ring U型密封圈63*53*6	4	☆	22439-43711	
16	58604-15T11	spacer 支承环	2	☆	24248-52251	
17	58615-15T11	Bushing 钢背轴承3038	2		Z2123-03038	
18	58601-30T11	Grease 直通式滑脂嘴	2		Q700B01	
19	08931-4700A	Snap ring 挡圈47	4		B6052-00047	
20	58618-15T11	Bushing 关节轴承GE30ES	2		Z2123-03025	
21	05786-1455A	Bolt 螺栓M14×55	2		B0223-14055	
22	58608-15T11	Bushing 钢背轴承3025	2		Z2123-03025	
	58600-15T11-KIT	Kit for tilt cyl. 倾斜油缸修理包	1	All ☆ Parts		

倾斜油缸 (2W/2F)

图50

TILT CYLINDER (2W/2F)

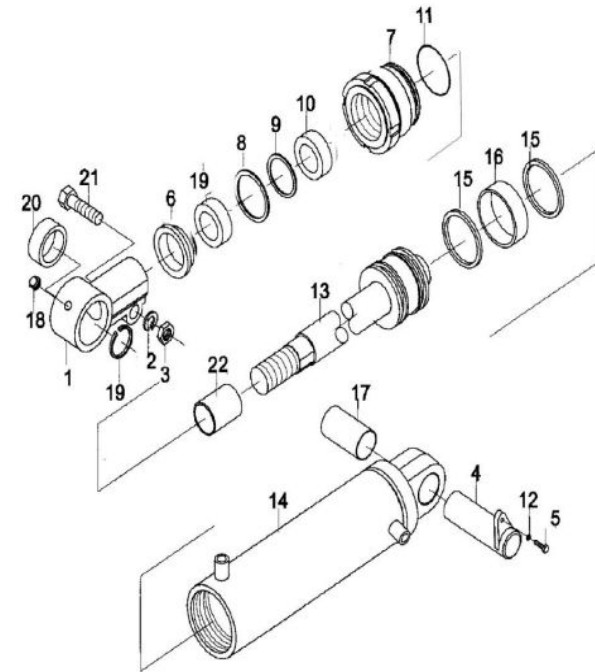
Fig 50



序号	零件编号	零部件名称	数量	备注	供方零件号	备注2
Item No	Part No	Description	QTY	Remark	Supplier Part No	Remark2
1	58603-15T11	Ear ring 耳环	2		HRD61F8502	
2	00093-1400A	washer 垫圈	2		B5050-00014	
3	06171-1415A	nut 螺母M14	2		B4123-00014	
4	50600-15T02	Pin 倾斜油缸销轴	2			
5	05783-0820A	Bolt 螺栓M8×20	2			
6	58606-15T11	washer 防尘圈47*30*7	2		24248-52341	
7	58602-15T11	Guide Sleeve 导向套	2		D10B8-52051	
8	58607-15T11	Snap ring 挡圈	2	☆	24248-52351	
9	58605-15T11	Shim 挡片30*43*3	2	☆	24248-52331	
10	58609-15T11	Yx-ring U型密封圈30*43*10	2	☆	24248-52321	
11	58A11-15T11	O-ring O型密封圈63*3.1	2	☆	Z6003-06303	
12	00093-0800A	washer 垫圈8	2			
13	58S01-15T11	Body,piston ass'y 活塞体	2		X063DJ.1	
14	58S02-15T11	Tube,cylinder ass'y 缸筒总成	2		X063DJ.2	
15	58613-15T11	U-ring U型密封圈63*53*6	4	☆	22439-43711	
16	58604-15T11	spacer 支承环	2	☆	24248-52251	
17	58615-15T11	Bushing 钢背轴承3038	2		Z2123-03038	
18	58601-30T11	Grease 直通式滑脂嘴	2		Q700B01	
19	08931-4700A	Snap ring 挡圈47	4		B6052-00047	
20	58618-15T11	Bushing 关节轴承GE30ES	2		Z2123-03025	
21	05786-1455A	Bolt 螺栓M14×55	2		B0223-14055	
22	58608-15T11	Bushing 钢背轴承3025	2		Z2123-03025	
	53S00-30T11-KIT	Kit for tilt cyl. 倾斜油缸修理包	1	All ☆ Parts		

倾斜油缸 (3F)

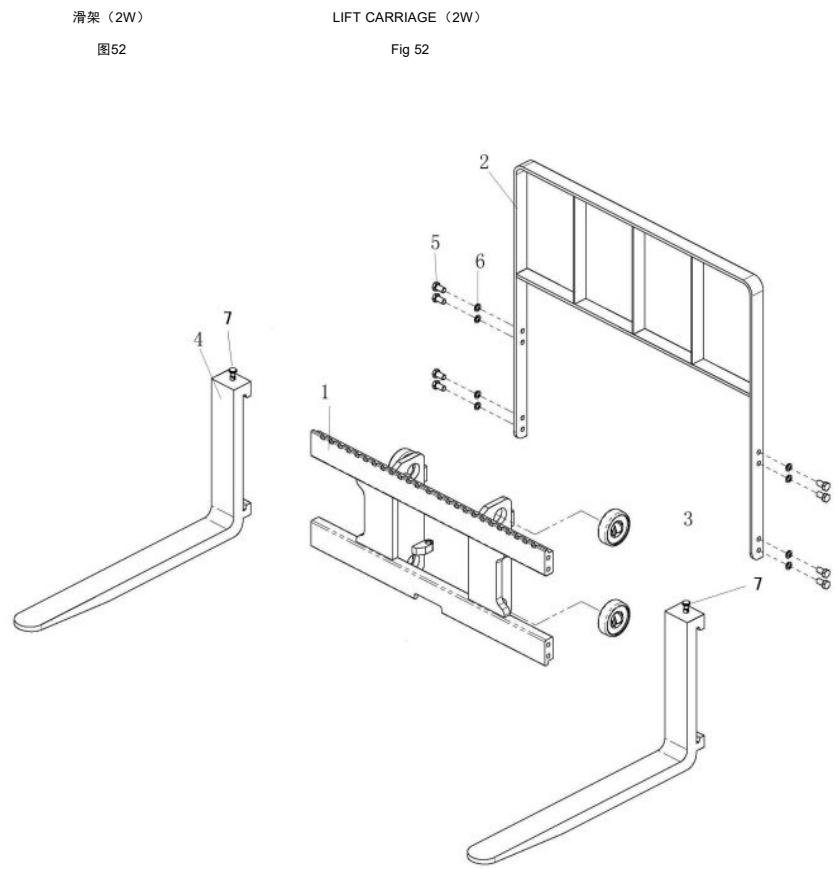
图51



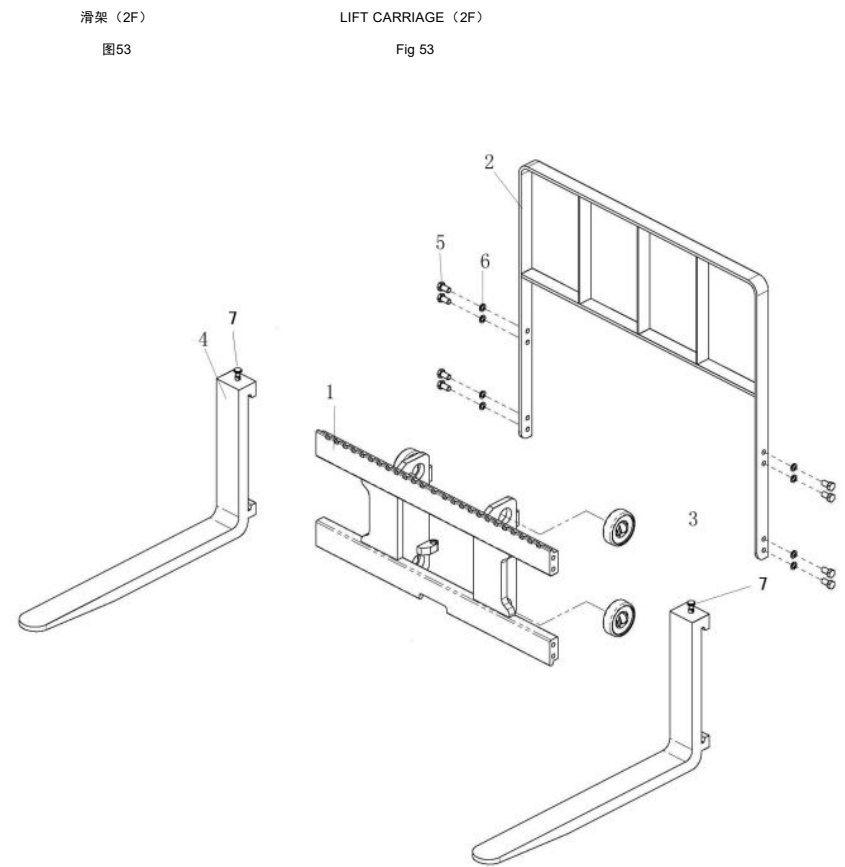
TILT CYLINDER (3F)

Fig 51

序号	零件编号	零部件名称	数量	备注	供方零件号	备注2
Item No	Part No	Description	QTY	Remark	Supplier Part No	Remark2
1	59600-15T01	Carriage 货叉架	1			
2	59700-15T01	Backrest 挡货架	1			
3	59A00-15T11	Roller 滚轮	4		760211AT	
4	58A01-15T11	Fork&lock pin 货叉总成	2			L=920
5	05782-1430B	Bolt 螺栓M14x30	8			
6	00093-1401A	Washer 垫圈14	8			
7	59121-25T11	Pin lock 货叉销	2			

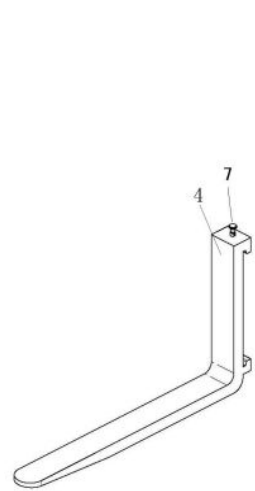


序号	零件编号	零部件名称	数量	备注	供方零件号	备注2
Item No	Part No	Description	QTY	Remark	Supplier Part NO	Remark2
1	5F5A0-15T01	Carriage 货叉架	1			
2	59700-15T01	Backrest 挡货架	1			
3	59A00-15T11	Roller 滚轮	4		760211AT	
4	58A01-15T11	Fork&lock pin 货叉总成	2			L=920
5	05782-1430B	Bolt 螺栓M14x30	8			
6	00093-1401A	Washer 垫圈14	8			
7	59121-25T11	Pin lock 货叉销	2			

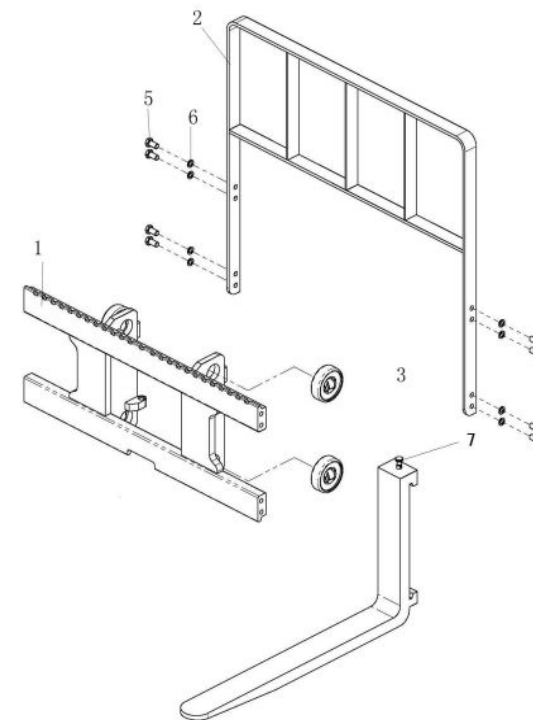


序号	零件编号	零部件名称	数量	备注	供方零件号	备注2
Item No	Part No	Description	QTY	Remark	Supplier Part No	Remark2
1	54SA0-15T01	Carriage 货叉架	1			
2	59700-15T01	Backrest 挡货架	1			
3	59A00-15T11	Roller 滚轮	4		760211AT	
4	59400-15T11	Fork&lock pin 货叉总成	2			L=970
5	05782-1430B	Bolt 螺栓M14x30	8			
6	00093-1401A	Washer 垫圈14	8			
7	59121-25T11	Pin lock 货叉销	2			

滑架 (3F)
图54



LIFT CARRIAGE (3F)
Fig 54



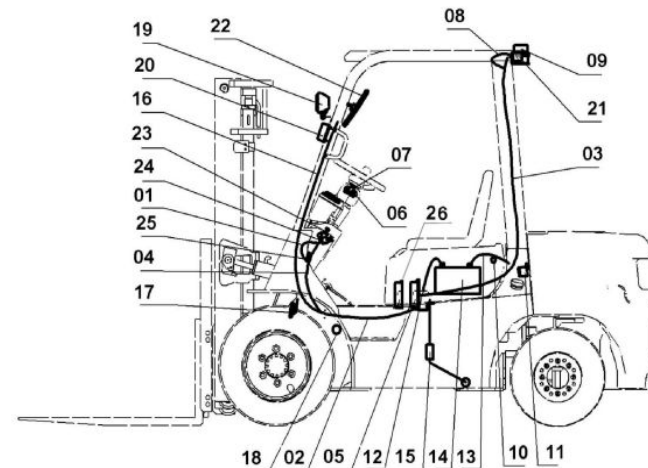
序号 Item No	图号 Part No	零部件名称 Description	数量 QTY	备注 Remark	供方零件号 Supplier Part No	备注2 Remark2
A	24000-30T11	Harness ass'y 线束总成	1	All☆Parts		4TNE92
	M24000-30T11	Harness ass'y 线束总成	1	All☆Parts		F2.2
1	24001-30T11	Cabinet harness 仪表架线束	1	☆		24000-30T11,M24000-30T11
2	24002-15T11	Engine harness 发动机线束	1	☆4TNE92		24000-30T11
	M24002-15T11	Engine harness 发动机线束	1	☆F2.2		M24000-30T11
3	24003-30T13	Rear light harness 后灯线束	1	☆		24000-30T11,M24000-30T11
4	24800-30T11	Combination 仪表总成	1			
4	248A0-30T11	Combination 仪表总成	1	08152015-		
5	73715-30T11	Control box 中央控制盒	1			
6	24004-30T13	Switch,direction 方向组合开关	1			
7	24005-30T13	Switch,light 灯光组合开关	1			
8	24009-30T13	Cable,caution light 警示灯线束	1	☆选用件		24000-30T11,M24000-30T11
9	73712-30T11	Caution light 频闪警灯	1	选用件		
10	Y73716-25T11	Water temp sending unit 水温感应器	1			4TNE92
	M73716-25T11	Water temp sending unit 水温感应器	1			F2.2
11	73722-30T11	Buzzer 蜂鸣器	1			
12	Y24010-25T13	Cable 电瓶线(+)	1			
13	24011-30T13	Cable 电瓶线(-)	1			
14	173A1-30T11	Battery 蓄电池	1			
15	173A0-15T11	Fuel level sending unit 燃油传感器	1			
16	173A2-30T11	Cable,head lamp 前大灯线束	2	☆		24000-30T11,M24000-30T11
17	73721-30T11	Horn 喇叭	1			
18	73719-30T11	Oil temp sending unit 油温感应塞RC1/2	1			

电气系统

ELECTRIC SYSTEM

图55

Fig 55



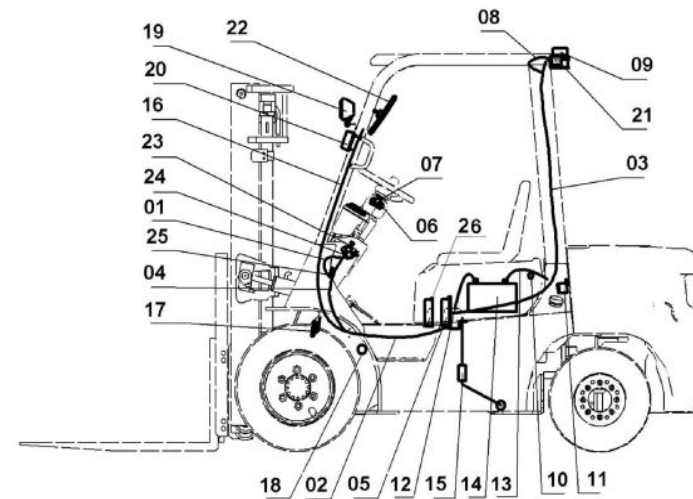
序号	图号	零部件名称	数量	备注	供方零件号	备注2
Item No	Part No	Description	QTY	Remark	Supplier Part No	Remark2
19	73713-30T11	Head lamp ass'y 前照灯	2			
20	73714-30T11	Head lamp 前小灯	2			
21	73710-30T11	Combination lamp 三色后组合灯	2			
22	73707-15T11	Rearview mirror 小号反光镜	2			
23	73723-30T11	Switch,caution light 警灯开关	1			
24	73724-30T11	Switch 点火开关	1			
25	73725-30T11	Brake switch 脚制动开关	1			
26	73737-15T11	start coil 点火线圈	1	F2		

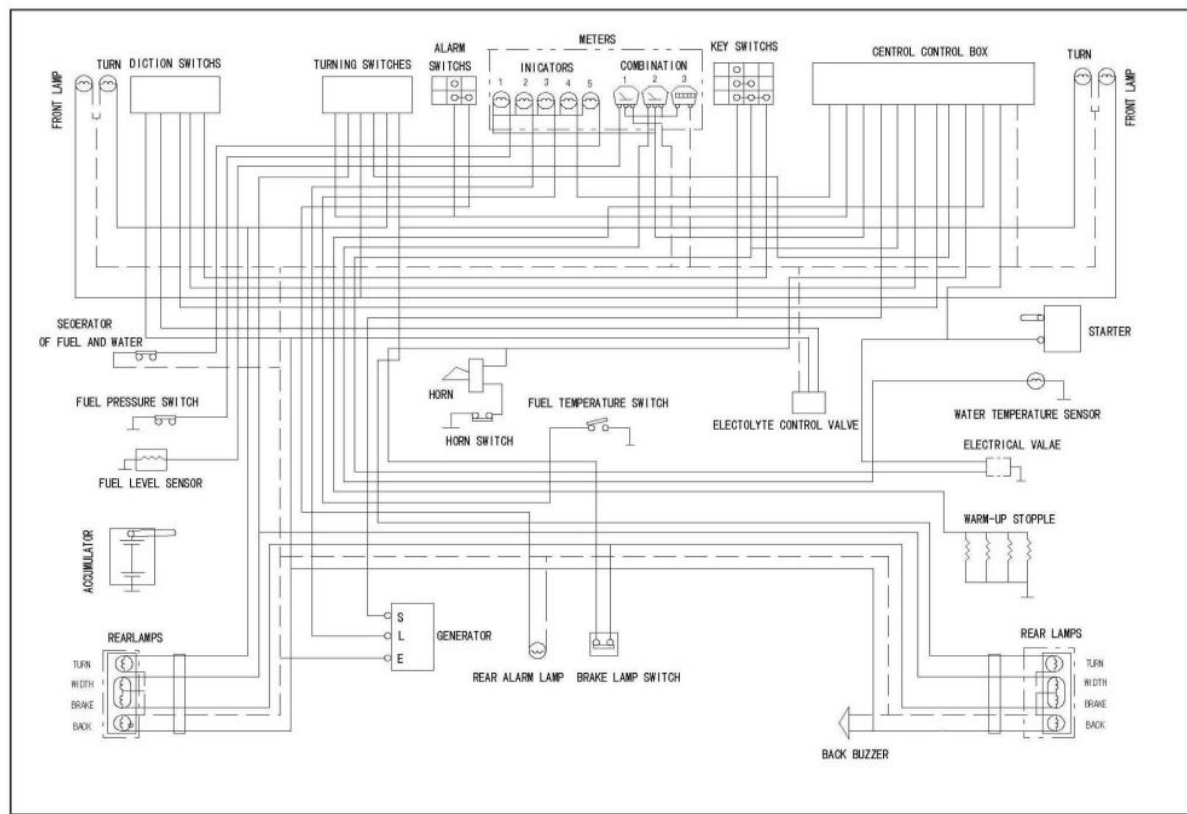
电气系统

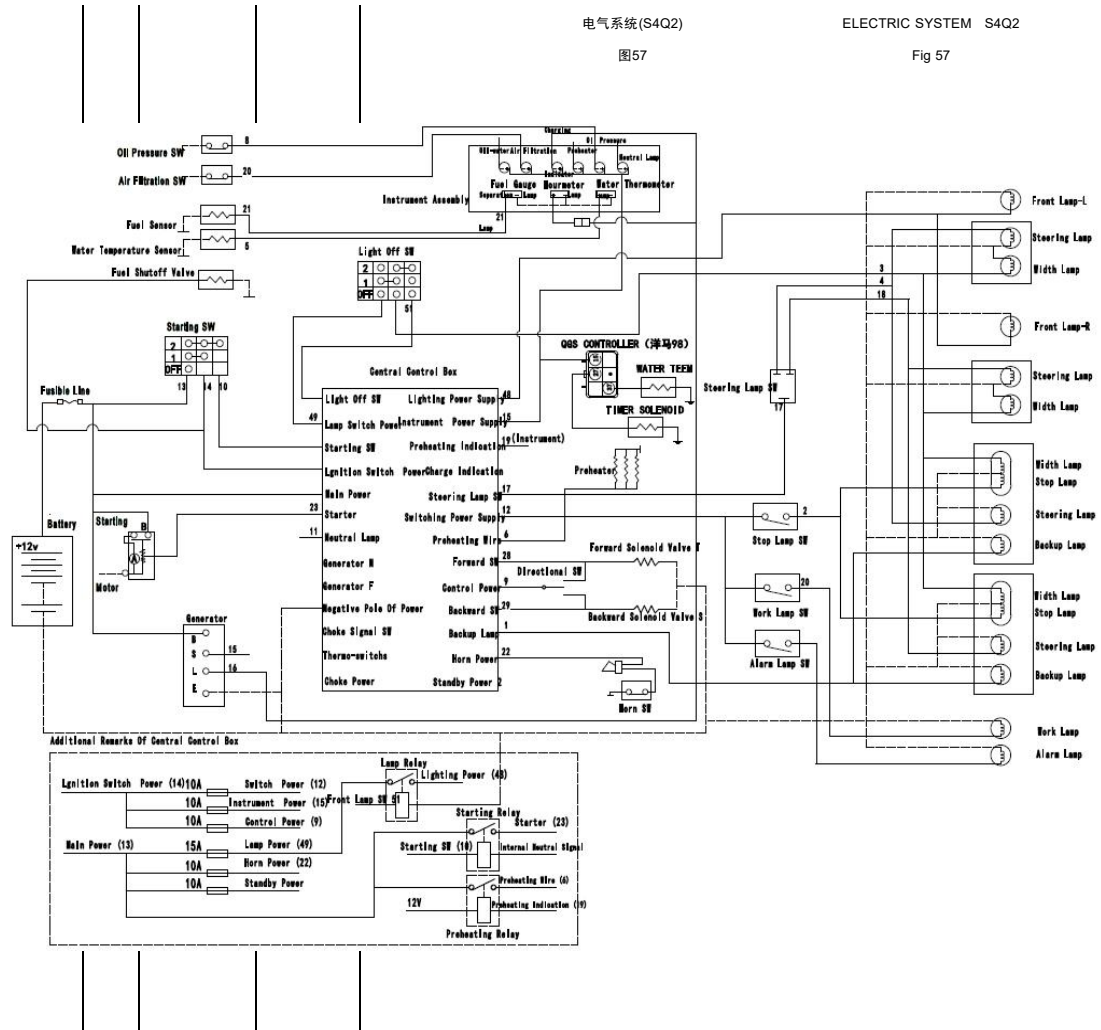
ELECTRIC SYSTEM

图55

Fig 55



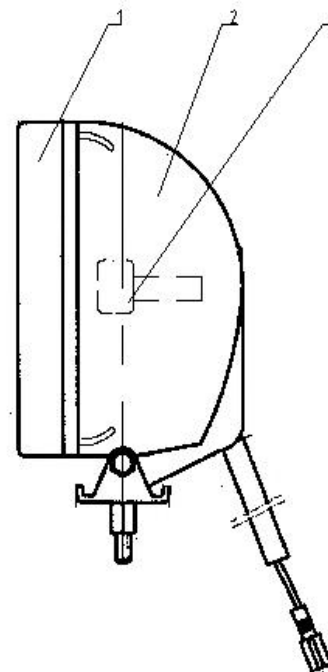




序号	零件编号	零部件名称	数量	备注	供方零件号	备注2
Item No	Part No	Description	QTY	Remark	Supplier Part No	Remark2
1	73736-30T11	Head lamp lens 前照灯罩	2			73727-30T11
2	73726-30T11	Head lamp body 前照灯座	2			73727-30T11
3	73727-30T11	Bulb 前照灯泡	2	12V/55W	H3.12V55	

前照灯
图58

HEAD LAMP ASS'Y
Fig 58



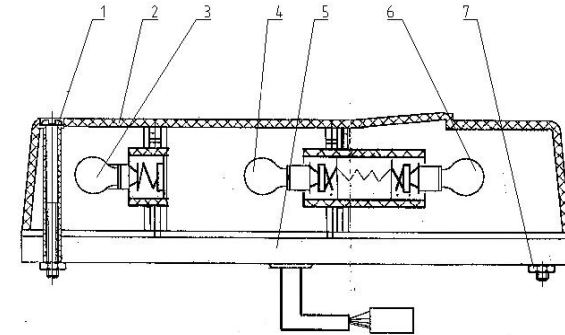
序号	零件编号	零部件名称	数量	备注	供方零件号	备注2
Item No	Part No	Description	QTY	Remark	Supplier Part No	Remark2
A	73710-30T11	Combination lamp 三色后组合灯	2			
1	00067-0550A	Screw 螺钉M5x50	4			73710-30T11
2	73728-30T11	Rear lamp lens 三色后组合灯罩	2			73710-30T11
3	73729-30T11	Rear lamp bulbs 三色后组合灯泡	2	12V/10W		73710-30T11
4	73730-30T11	Rear lamp bulbs 三色后组合灯泡	2	12V/21W		73710-30T11
5	73731-30T11	Rear lamp body 三色后组合灯座	2			73710-30T11
6	73732-30T11	Reay lamp bulbs 三色后组合灯泡	2	12V/21/5W		73710-30T11
7	06170-0500A	Nut 螺母M5	4			73710-30T11

三色后组合灯

REAR COMBINATION LAMP

图59

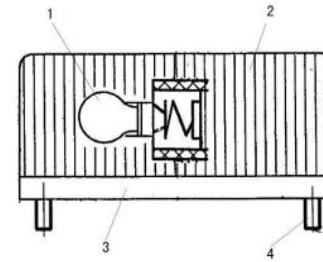
Fig 59



序号	零件编号	零部件名称	数量	备注	供方零件号	备注2
Item No	Part No	Description	QTY	Remark	Supplier Part No	Remark2
A	73714-30T11	Head lamp 前小灯	2			
1	73734-30T11	Bulb 灯泡	1	12V/21W		
2	73733-30T11	Front lamp lens 前小灯罩	1			73714-30T11
3	73735-30T11	Front lamp body 前小灯座	1			73714-30T11
4	00067-0455A	Screw 螺钉M4x55	2			

前小灯
60

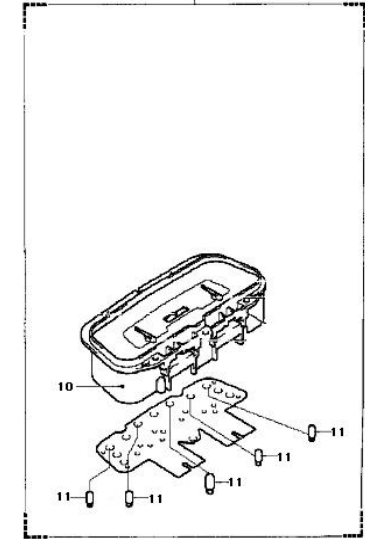
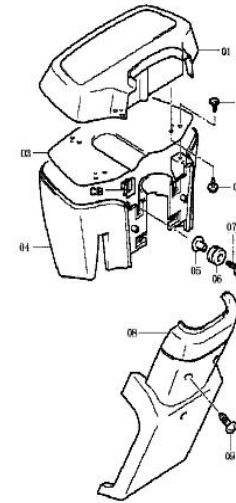
FRONT LAMP
Fig 60



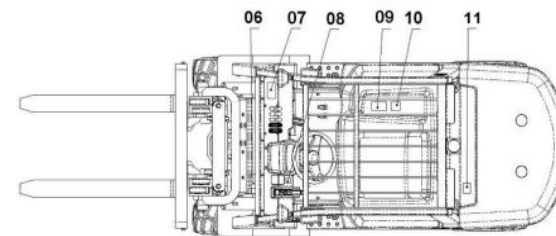
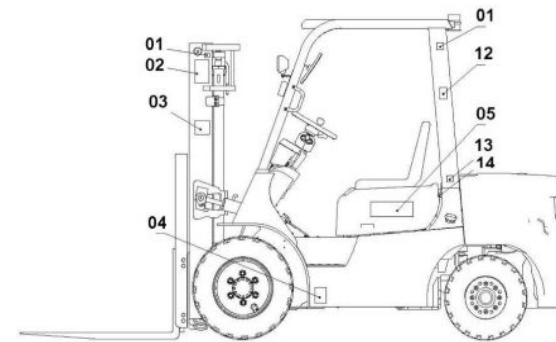
序号	零件编号	零部件名称	数量	备注	供方零件号	备注2
Item No	Part No	Description	QTY	Remark	Supplier Part No	Remark2
A	24800-30T11	Combination Meter	1			
1	248A0-30T11	Meter panel ass'y	1			24800-30T11
2	00067-0520A	Screw	8			
3	24801-30T11	Connect plate	1			24800-30T11
4	24802-30T11	Down cover	1			
5	48005-30T01	Bolt support	4			
6	48004-30T11	Rubber shim	4			
7	05782-0625A	Bolt	4			
8	24803-30T11	Cover	1			24800-30T11
9	00067-0625A	Screw	3			
10	24808-30T11	Meter body	1			
11	24809-30T11	Lens warning	5			

仪表总成
图61

COMBINATION METER
Fig 61



序号	零件编号	零部件名称	数量	备注	供方零件号	备注2
Item No	Part No	Description	QTY	Remark	Supplier Part No	Remark2
1	99103-30T11	Label,lift 起吊标牌	4			
2	99104-30T11	Decal,warning 警告标记	2			
3	99113-30T11	Decal, prohibit climbing 禁爬标记	2			
4	99105-30T11	Decal,air pressur 气压标牌	2			
5	99101-15T11	Decal,modle 型号标牌	2			
6	99122-30T11	Name plate 铭牌	1			
7	99102-15T11	Decal.capacity 载荷曲线	1	15T8 2W/2F		
	99116-15T11	Decal.capacity 载荷曲线	1	15T8 3F		
	99102-18T11	Decal.capacity 载荷曲线	1	18T8 2W/2F		
	99116-18T11	Decal.capacity 载荷曲线	1	18T8 3F		
8	99106-30T11	Decal,hydraulic oil 制动液标记	1			
9	99107-30T11	Decal,caution 检查要领	1			
10	99108-30T11	Decal,lubrication 润滑图	1			
11	99109-30T11	Decal,add water 水箱警示牌	1			
12	99112-30T11	Decal,strictly prohibit water 严禁冲水标牌	1			
13	99110-30T11	Decal,fuel 燃油标记	1			
14	99123-30T11	Decal,fan safty 风扇标牌	1			
15	99115-30T11	hydraulic oil M. 液压油标记	1			
16	99117-30T11	mast safty M. 安全标记(门架夹手)	1			
17	99111-30T11	Fan safty M. 安全标记(风扇夹手)	1			
18	99118-30T11	hand brake M. 手制动	1			
19	99119-30T11	seat belt M. 安全标记(安全带)	1			
20	99120-30T11	Cap M. 安全标记(安全帽)	1			
21	99121-30T11	CE M. CE标记	1			



标牌
图62

Label
Fig 62