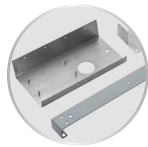
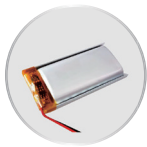


Smart Handheld Laser Welder

A1500 Ultimate / A1000 Standard



Thin metal



Precision



Sheet metal



Tubes



Appliance



Kitchen

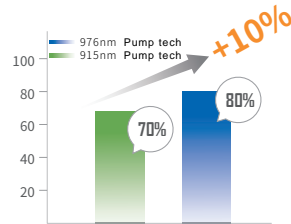
Wide Range: Different material (MS、SECC)、Alu、Copper、SS、 Etc.



Six Points Advantages

Higher Efficiency ▶

- Independent intellectual property rights 976nm high-efficiency energy-saving technology, high-brightness single-module laser technology
- New air-cooled technology platform architecture, active refrigerant type heat dissipation



Optical-Optical Air-cooled tech platform

More Portable ▶

- The weight and volume are better than water cooled hand-held laser welding machine, and the volume is about 1/4, the weight is about 1/3 of it
- Extremely lightweight body, so that the application scene has nearly doubled, take it with you, plug and play (220V)
- The integrated body design conforms to ergonomics and improves the mobile reliability of the whole machine



Easy to load ,more portable

Easy to Operate ▶

- Compared with operating traditional welding machines, novice welders do not need a lot of time training and experience accumulation, and only need a few hours of learning to get started easily
- The machine presets 55 sets of commonly used welding parameters, which can be quickly switched to the best welding parameters according to different materials and thickness.

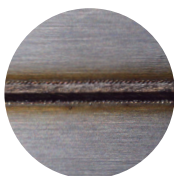
Set parameters through the panel, the operation is very intuitive and concise, and can be customized and saved at the same time



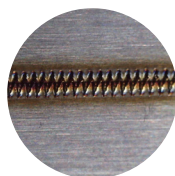
Built-in 55 programs+ customizable

Better performance ▶

- In different materials and thickness, better welding effect, without distortion, undercut or burn-through.
- The process is smooth and beautiful, deep penetration, small deformation, no need for subsequent processing



SS stitch welding



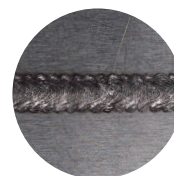
SS welding



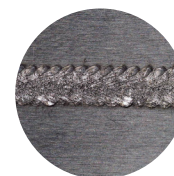
Copper stitch welding



Copper welding



Alu stitch welding



Alu welding

Improve Efficiency ▶

Compared with the traditional welding method, it has unparalleled speed advantage, and the efficiency can reach nearly 10 times in some scenarios.

The welding seam is beautiful and has no deformation, which improves the one-time pass rate of the workpiece, only a small amount of solder splashes, reduces the subsequent grinding and polishing process, improves the pass rate, improves efficiency, reduces waste, and reduces the cost of workpieces



More Safety ▶

Laser welder is IV class laser products. In order to operate safely, require protective measures .

- Key switch and an emergency stop button to ensure the safety of operation with color LED lights,
- QBH interlock ensure the laser transmission integrity
- Work-piece and welding head interlock, The laser will automatically off when welding heading leaves the work-piece



Control panel and Interface

- All interfaces are uniformly arranged on the back of the machine, clearly marked to facilitate quick start
- Fiber delivery cable, gas pipes and control cables are pre assembled into the protective cable (5m/10m)
- Plug in AC power supply, insert the protective gas, set the parameters, and fix the work-piece to be processed, and the welder will be ready to operated.

Access advance parameter setting page through Ethernet /WIFI, fine adjust and save the parameters



Product Specification

Output power	1500W/1000W	Wobble Width	0-5mm
Voltage Input	220VAC/50Hz/60Hz	Wobble Freq.	0-300HZ
Dimension	650x300x621[mm](L×W×H)	Build-in programs	55 programs
Weight	65[kg]/60[kg]	Avg.power	4650W/3080W (Data from Lab)

Packing List and Optional Accessories

- Power cable
- QBH delivery cable(5m/10m)
- Wire feeder (Optional)
- Laser welder body
- Handheld welding gun
- Welding helmet (Optional)
- User Manual
- Welding nozzle 5 types
- Goggle (Optional)

Welding gun and Nozzles



Production and Service Network



3S service and show center:

- Shandong** E43#,Expo Xingfu town Boxing Binzhou city.
- Zhejiang** #10,Bldg15,Jincheng Mid Rd.Yongkang Jinhua city.
- Guangdong** #01A,F3 Bldg13,Shunlian machine town Foshan city.

Company Address:

- Shanghai (HQ)** Bldg5-1,#398 Shuanglian Rd.Qingpu.
- Shandong** Qilu Laser industry part Zibo City
- Jiangsu** 1st JinShan Rd. Rudong Town Nantong City
- Northeast CN** #265 Yueling Rd.Lishan AnShan city

Legal statement: GW (Shanghai)Laser Technology Co., Ltd. reserves the right to modify any information in this document at any time without prior notice and assumes no responsibility.
During the product sales process, the information in this document is for reference only. Please refer to the sales agreement for specific parameters.