

SPELLBINDERS®  
PAPER ARTS

*glimmer*™

SIMPLY. STUNNING.



OPERATING INSTRUCTIONS







PLEASE READ ALL OF THE **SAFETY PRECAUTIONS** ON THE NEXT PAGE BEFORE USING THE **GLIMMER HOT FOIL SYSTEM**

---

**Thank you for your purchase of the Glimmer™ Hot Foil System!**

Enhance papercrafting projects and more with beautiful foiled accents. The Glimmer Hot Foil System is designed to be used with the Spellbinders® Platinum™ and Platinum 6™ Die Cutting Machines. It can also be used with the Big Shot™ and select manual die cutting machines.

Please take some time to get familiar with the machine by reading through this instruction booklet. Please make sure that you read through all of the Safety warnings on the next page before using the device.

The Glimmer Hot Foil System is intended for use in the country listed on the packaging; other countries have different electrical requirements. Use of the system not in the country intended will void the warranty.



Intertek



---

**Includes:**

- Hot Foil Stamp Press Machine
  - Power Cord (6 ft.)
  - Acrylic Spacer Pad
  - Thin Shim
  - Silicone Cooling Pad
  - Magnetic Pick-Up Tool
  - Glimmer Plates (2)
  - Starter Foil Rolls: Rainbow & Gold
- 

For Glimmer Hot Foil System information, tips, techniques and education go to:  
[www.spellbinderspaperarts.com/Glimmer-Info](http://www.spellbinderspaperarts.com/Glimmer-Info)

## **i** IMPORTANT SAFETY PRECAUTIONS

Before operating the Glimmer Hot Foil System,  
PLEASE READ ALL INSTRUCTIONS BEFORE USE.

### **WARNINGS**

1. **HOT SURFACE. AVOID CONTACT.**  
DO NOT touch the hot surfaces.  
When handling, use handle and sides of Platform. To reduce risk of electrical shock and burns, DO NOT hold hot surfaces.
2. To protect yourself from electrical shock do not immerse the Cord, Plug, Platform and base in water or any other liquid.
3. Close supervision is required when the system is used by or near children.
4. Do not leave device unattended when in use or cooling down.
5. Ensure Power Cord is in a secure location where no one can step on or trip over Power Cord. Make sure Power Cord does not become tangled or is in reach of children.
6. Extension Cord Use: A short power supply cord is provided to reduce the hazards from entanglement or tripping over a longer cord. Use of an extension cord may be used with care and caution. Ensure that the Cord cannot be pulled on by children or tripped over. The marked electrical rating should be at least as great as the electrical rating of the Machine.
7. **CAUTION:** Do not immerse or use in water.
8. DO NOT use when body is wet.
9. To reduce the risk of electric shock, this product has a polarized Plug (one blade is wider than the other). This Plug is intended to fit in a polarized outlet only one way. When the Plug does not fit fully in the outlet, reverse the Plug. When it still does not fit, contact a qualified electrician to install the proper outlet. Do not change the Plug in any way.

### **i** IMPORTANT

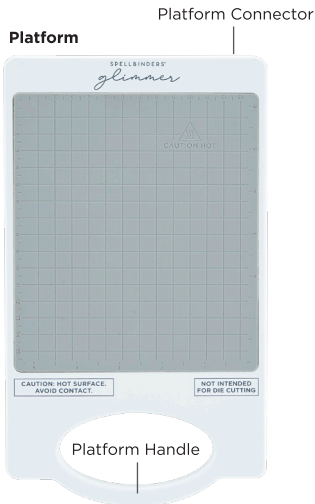
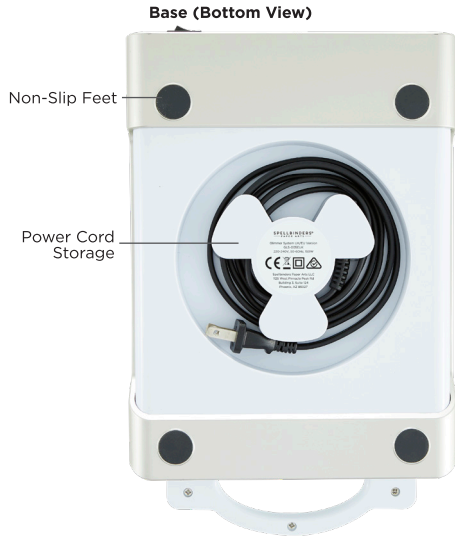
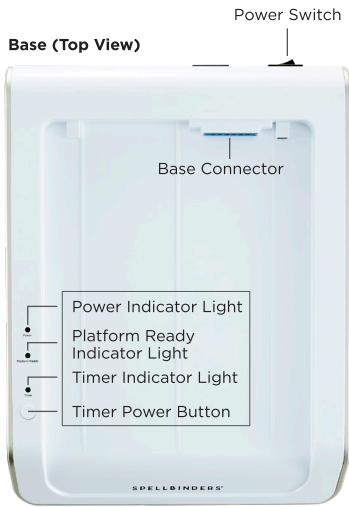
1. DO NOT use Platform for die-cutting. The Silicone Heating Pad is not repairable.
2. This Machine can reach temperatures up to 250°F / 121°C.
3. Ensure the system is on a stable surface.
4. When not in use, unplug from outlet. When unplugging Machine from outlet, pull on the Plug not the Cord. Allow the system to cool down before storing or cleaning.
5. Do not attempt to repair device, Power Cord, or its accessories. Please consult a qualified person as directed by the manufacturer for any needed repairs.
6. Product intended for use in country or region intended.

### **NOTICE**

1. Only use Machine for its intended use and not for any other purpose.
2. Household use only.
3. SAVE THESE INSTRUCTIONS.

This appliance is not intended for use by persons (including children) with reduced physical, sensory or mental capabilities, or lack of experience and knowledge, unless they have been given supervision or instruction concerning use of the appliance by a person responsible for their safety. Children should be supervised to ensure that they do not play with the appliance.

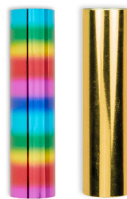
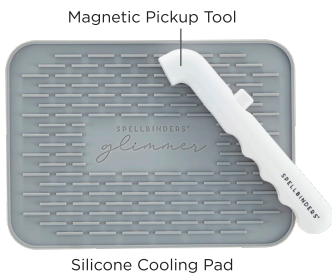
# CONTENTS



Acrylic Spacer Pad  
(8.25" x 6.125")



Thin Shim  
(8.25" x 6.125")



Gold and Rainbow  
Foil Sampler Rolls  
(5 in x 8 ft)



Two Glimmer Plates

## HOW TO USE WITH GLIMMER PLATES

1



Plug in and push power switch on. The power light will light up red. When heated to optimal temperature, the platform ready light indicator will light up green.

2



Place Glimmer plate on platform. Press timer button; the timer light indicator will initially blink green. You are ready to foil when the timer light indicator turns solid green.

3



Place Glimmer Foil (shiny side facing down) on the hot Glimmer plate.

4



Add desired material and the necessary shims. See Material Chart.

5



Remove platform from base and slowly roll it through the Platinum™ Machine or select manual die cutting machine.

6



Carefully remove shims; place platform back in base. Peel foil from material to reveal foiled design.

Material Chart	Glimmer Thin Shim	Glimmer Spacer Pad	Cutting Plate (from Die Cutting Machine)
Cardstock	✓	✓	
Watercolor Paper	✓	✓	
Chipboard		✓	
Fabric	✓	✓	
Ribbon	✓	✓	
Leather			✓

## HOW TO USE WITH SELECT ETCHED/WAFER-THIN DIES

1



Plug in and push power switch on.  
The power light will light up red.  
When heated to optimal temperature,  
the platform ready light indicator will  
light up green.

2



Place Etched/Wafer-Thin Die **cut side up** (this is important or you will damage platform surface!). Press timer button; the timer light indicator will initially blink green. You are ready to foil when the timer light indicator turns solid green.

3



Place Glimmer foil (shiny side facing down) on the hot etched die.

4



Add desired material and the necessary Shims (it is recommended to include a cardstock shim with the spacer and thin shims). See Material Chart.

5



Remove platform from base and slowly roll it through the Platinum™ Machine or select manual die cutting machine.

6



Carefully remove shims; place platform back in base. Peel foil from material to reveal foiled design.

**Tip:** Some etched/wafer-thin dies do not translate well to foiling.  
Have fun and experiment as to which Glimmer the best!

## HOW TO LETTERPRESS With Glimmer Hot Foil System

1



Ink Glimmer Plate.

2



Place inked Glimmer plate on platform, inked side facing up.

3



Add desired material and the necessary shims. See Material Chart.

4



Slowly roll platform through the Platinum™ Machine or select die cutting machine.

5



Remove shims. Carefully remove material to reveal letterpressed design.

**Tip:** For an embossed look, follow the instructions for Letterpress, but do NOT ink the Glimmer plate.



## GLIMMER TIPS AND FAQs

---

### TIPS

- Trim corners of Glimmer foil to prevent over foiling.
  - For best results, smooth cardstock is recommended.
  - Slowly roll platform through die cutting machine to ensure an even hot foil transfer.
  - When the platform is ready to foil, undock the platform first before placing foil, material and shims on hot Glimmer plate; then run through die cut machine. This will reduce movement of foil or material.
  - It is recommended to connect the platform back into the base after each foiling.
  - Always use magnetic pick-up tool to remove hot Glimmer plate from platform onto silicone cooling mat.
  - A clean, white eraser may be used to remove excess over foiling.
- 

### FAQs

#### **What happens if I get over foiling (foil in areas that are not part of the design):**

This may be due to the thickness of material you are foiling or if you have too many shims. If you are getting over foiling, experiment by removing any paper or cardstock shim you may have added or the thin shim.

#### **What happens if I get under foiling (the full design does not transfer):**

This may be due to the material you are foiling being too thin. In addition to the Spacer Shim and Thin Shim, add a 1/2 sheet of copy paper; if that does not work, add a cardstock shim. Once you know your “sandwich” for your material, keep a note for future use! Note: Do not add too many shims as it may cause too much pressure and damage platform.

#### **What happens if I foiled directly on my Glimmer Plate, Spacer Shim or Thin Shim?**

This has happened to all of us. Don't worry-they will still work with the foil on them! But, if you want to clean unwanted foil from a Glimmer Plate, Spacer Shim or Thin Shim, use un-du® (or similar adhesive removal product) and scrape foil off with a flat edge, taking care not to scratch your shims or plates.

#### **What foils can I use with my Glimmer Hot Foil System?**

In addition to Glimmer Foil, look for foils that are identified as “thermal foil” or “heat activated foil”. Foil transfer sheets or foil toner sheets will not work with the Glimmer Hot Foil System.

#### **What plates can I use with my Glimmer Hot Foil System?**

In addition to our Glimmer Plates, most competitors' hot foil plates will work. Note: competitors' hot foil plates that die cut at the same time will not work.

Spellbinders has all the information, tips and techniques on how to use your **Glimmer Hot Foil System!**

Go to [www.SpellbindersPaperArts.com/Glimmer-Info](http://www.SpellbindersPaperArts.com/Glimmer-Info) for:

- User Guide
- Machine Compatibility and Glimmer “Sandwiches”
- Tips & Techniques
- FAQs
- Shop Glimmer Plates and Foils



Our **Spellbinders Creative Arts YouTube Channel** has a dedicated Glimmer Hot Foil System Playlist...check it out!



Follow our hashtags on Instagram **@teamspellbinders**  
**#glimmerhotfoilsystem** **#neverstopmaking**

### **i** IMPORTANT

**The Glimmer Hot Foil system has an automatic shut-off feature.**

The heating element will automatically turn off if left unattended for 10-15 minutes; however the red power indicator light will stay on.

To reset, turn the machine's power switch to the off position and turn back on.



**SPELLBINDERS®**  
— PAPER ARTS —

Spellbinders® Paper Arts Company, L.L.C.

Phoenix, Arizona

Toll Free 888-547-0400

Local 602-385-7700

2022© All Rights Reserved

Made in China