

VANDAL - 007

Solar Vandal Resistant Bollard Light



Special Order Item



Special Order Item

Our Solar Vandal Resistant Bollard is expertly crafted for superior durability and performance compared to traditional bollards. Equipped with high-efficacy LEDs and premium components, it ensures optimal and extended functionality. Achieving the highest vandal-resistant rating of IK10++, it boasts near-impenetrable strength. Additionally, the Solar Vandal Resistant Bollard is fully waterproof with an IP68 rating, catering to safety and flood-prone areas.

NOMINAL FLUX..... **588 LUMENS**
 NOMINAL POWER **3 WATT**

LIGHTING

Efficiency..... **196 Lumens/Watt**
 Chips LED..... **PHILIPS Luxeon 30-30**
 LED lifetime **Over 80 000 hours LM80**
 Optics/CCT..... **Asymetric & Symetric / 2300K to 6500K (Dual CCT Optional)**
 Light Height choose from..... **31.49 Inches or 17.71 Inches**

BATTERY

Technology..... **Lithium Iron Phosphate LIFEPO4**
 Capacity..... **38Wh**
 Autonomy..... **Over 24 hours at full charge - 4 Rainy Days back up**
 Charging Time..... **6 hours**
 Lifespan..... **Over 3000 CYCLES @ 80% DOD over 10 years Lifetime**
 Working Temp..... **14F to 158F - (Optional -40°F TO 158F)**

ENERGY

Solar Panel..... **6,3 Wc**
 Cells Type..... **Monocrystalline Panel Grade A 25 years**
 Certificates..... **IEC 61215 - IEC 61730 I and II - IEC 60904**

ELECTRONIC

Sensor..... **Microwave 270° Motion Sensor**

DIMENSIONS

Product..... **39.37" x 11.02" x 3.93" or 25.59" x 11.02" x 3.93"**
 Carton Size..... **42.91"x28.74"x 30.31" or 29.13"x28.74" x 30.31" (4 Pcs/Ctn)**
 Weight..... **11.68 LBS or 9.47 LBS**
 Materials..... **Aluminium & Polycarbonate**
 Installation..... **Bolt Down or Inground system**
 Product Model..... **AVS-VDL3149 / AVS-VDL1771D**

Beyond Solar retains the right to modify or change product specifications without prior notice, as part of our ongoing commitment to improvement



VANDAL - 007

Solar Vandal Resistant Bollard Light



Stock Item



Special Order Item

Our Solar Vandal Resistant Bollard is expertly crafted for superior durability and performance compared to traditional bollards. Equipped with high-efficacy LEDs and premium components, it ensures optimal and extended functionality. Achieving the highest vandal-resistant rating of IK10++, it boasts near-impenetrable strength. Additionally, the Solar Vandal Resistant Bollard is fully waterproof with an IP68 rating, catering to safety and flood-prone areas.

NOMINAL FLUX..... **588 LUMENS**
 NOMINAL POWER **3 WATT**

LIGHTING

Efficiency..... **196 Lumens/Watt**
 Chips LED..... **PHILIPS Luxeon 30-30**
 LED lifetime **Over 80 000 hours LM80**
 Optics/CCT..... **Asymetric & Symetric / 2300K to 6500K (Dual CCT Optional)**
 Light Height choose from..... **31.49 Inches or 17.71 Inches**

BATTERY

Technology..... **Lithium Iron Phosphate LIFEPO4**
 Capacity..... **38Wh**
 Autonomy..... **Over 24 hours at full charge - 4 Rainy Days back up**
 Charging Time..... **6 hours**
 Lifespan..... **Over 3000 CYCLES @ 80% DOD over 10 years Lifetime**
 Working Temp..... **14F to 158F - (Optional -40°F TO 158F)**

ENERGY

Solar panel..... **6,3 Wc**
 Cells type..... **Monocrystalline Panel Grade A 25 years**
 Certificates..... **IEC 61215 - IEC 61730 I and II - IEC 60904**

ELECTRONIC

Sensor..... **PIR 270° Sensor**

DIMENSIONS

Product..... **34.64" x 11.02" x 11.02" or 17.71" x 11.02" x 11.02"**
 Carton Size..... **42.91"x28.74"x30.31" or 35.03" x 11.02" x 11.02" (4 pcs / Ctn)**
 Weight..... **11.46 LBS or 9.25" LBS**
 Materials..... **Aluminium & Polycarbonate**
 Installation..... **Bolt Down or Inground system**
 Product Model..... **AVS-VDL007 / AVS-VDL1771**

Beyond Solar retains the right to modify or change product specifications without prior notice, as part of our ongoing commitment to improvement



LUMINAIRE HOUSING

LEDs

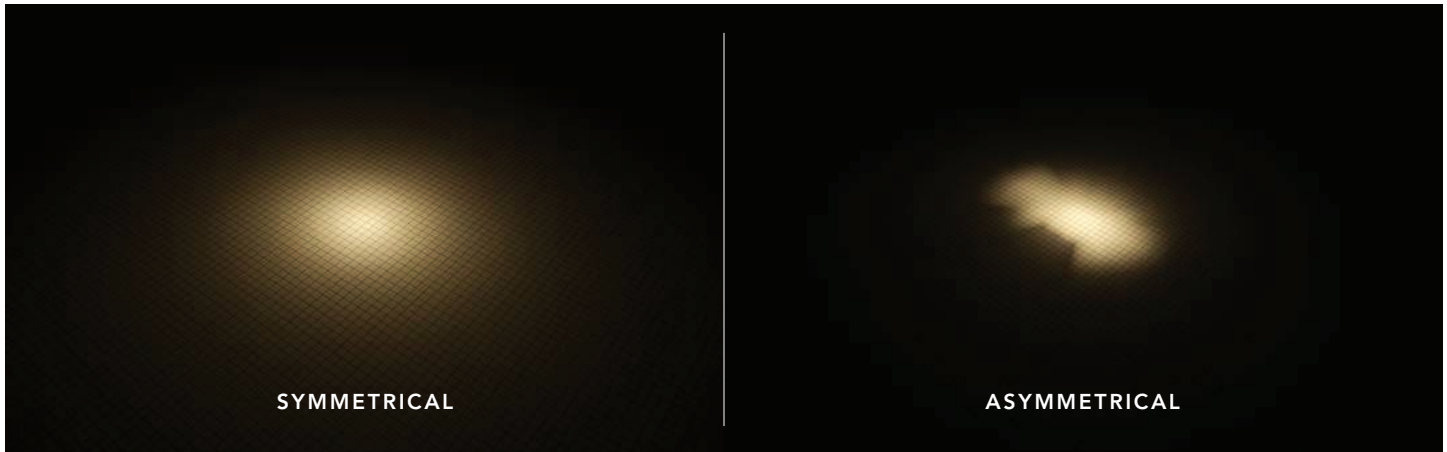
The high-housing and dome are constructed using VANDAL polycarbonate, ensuring durability and protection against UV ray and a guarantee against yellowing. The luminaire's unique design and shape make it almost indestructible, and it meets without any effort IK10+ certification standards.



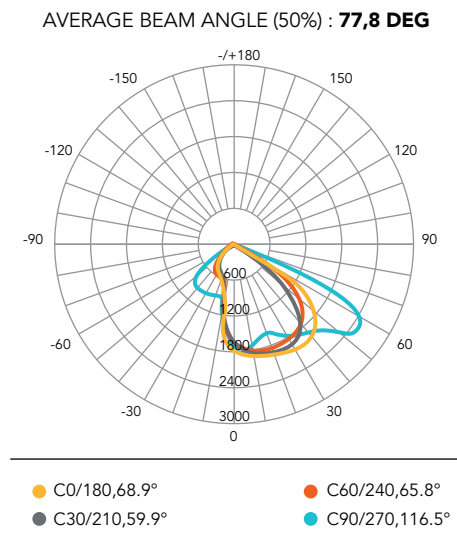
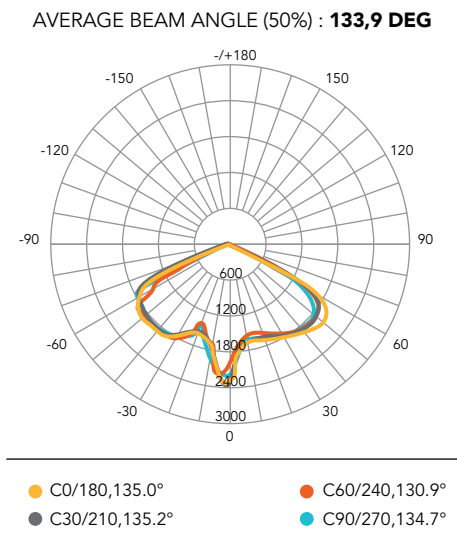
A TOTAL OF 588 LUMENS

The VANDAL is equipped with 10 Philips VANDAL which provide each an impressive 196 Lumens per Watt. These LEDs are integrated into the upper part of the dome and come equipped with custom optics for exceptional light distribution.

LIGHT DISTRIBUTION



PHOTOMETRIC CURVE



CORRELATED COLOR TEMPERATURE

Warm White

Neutral White

Cool White



BATTERY LIFEPO4

+ OVER 10 YEARS LIFETIME

The VANDAL Series features an advanced Iron Phosphate Lithium LiFePo4 battery, widely recognized as the best chemical technology for solar applications. With a remarkable life cycle of over 3000 cycles at 80% DOD, this battery provides reliable and efficient power for over 10 years.



EXTREME TEMPERATURE 14F TO 158F

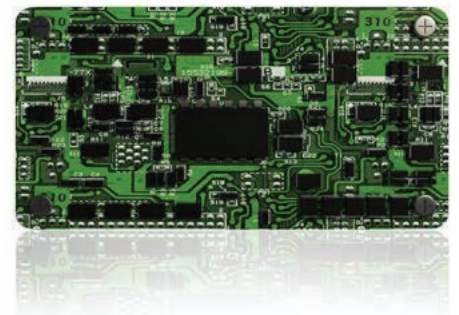
While standard batteries benefit from an operating temperature of 14F to 158F, Beyond Solar offers as optional a new Special LIFEPO4 battery with working range of -40F to 158F

BMS ELECTRONIC PROTECTION BATTERY MANAGEMENT SYSTEM

Our batteries are equipped with electronic circuit boards for a higher protection, ensuring battery functioning optimization no matter the situation.

THE BMS PROTECTS AGAINST

- OVER/UNDER POWER • OVERLOAD • OVER/UNDER VOLTAGE
- OVER/UNDER CHARGE • TEMPERATURE MANAGEMENT



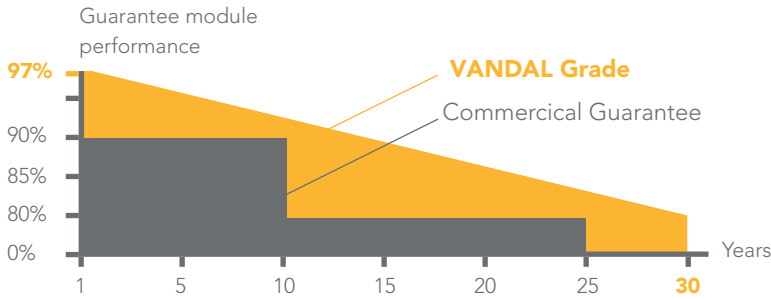
SOLAR PANEL

6,3 WATTS 6V

Encapsulated Monocrystalline Solar Panel **Grade A** Solar Cell with Tempered Glass.



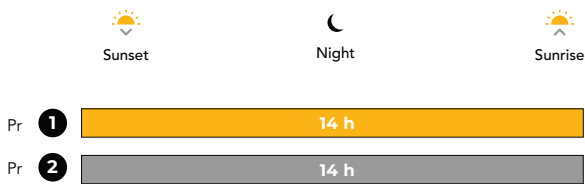
OUR PV PERFORMANCE GUARANTEE



MOTION SENSOR MICROWAVE

THE PHOTSENSOR AUTOMATICALLY TURNS THE LIGHT ON AT DUSK AND TURNS IT OFF AT DAWN.

The Microwave Motion Sensor with 270 coverage is invisible and integrated to the luminaire housing. It detects any presence and turn the light to full power when it is triggered.



- Program 1**
30% Dim + 100% Power for 20 sec when triggered
- Program 2**
20% Dim + 100% Power for 20 sec when triggered

Our dimming program will be customized to your geographical location for optimal efficiency.

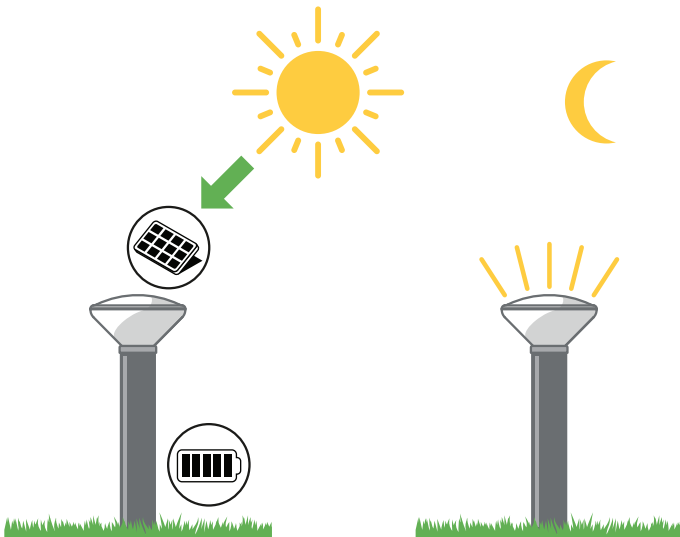


EASY INSTALLATION

Embrace the blend of durability and eco-friendly technology with your Vandal-007 Solar Bollard. Designed to withstand vandalism and harness the sun's power, this lighting solution illuminates your spaces with efficiency and style. Dive into the guidelines below to quickly set up, and enjoy sustainable lighting right out of the box.

STEP 1: IDENTIFY THE IDEAL SPOT FOR INSTALLATION

Choose a location with uninterrupted exposure to sunlight from dawn to dusk. Avoid places shaded by trees, buildings, or other structures to maximize solar energy absorption.

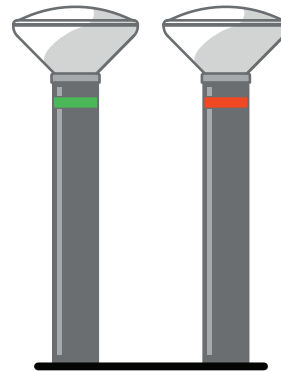


STEP 2: CHARGE BEFORE USE

Fresh out of the package, your Vandal-007 Solar Bollard Light may need an initial charge. Place it under direct sunlight for at least six hours to achieve a full charge, ensuring optimal performance.

STEP 3: UNDERSTAND THE DETECTION ORIENTATION

Locate the green label on the unit, which highlights the primary detection zone of the bollard. The Vandal-007 is equipped with a wide 270-degree detection range, ensuring comprehensive coverage for movement and activity around it.



Note the area marked with a red sticker on the pole beneath the light unit. This indicates a less sensitive detection zone, designed to minimize false triggers or unnecessary power consumption.

Position the bollard strategically, aligning the green-labeled side towards the areas with expected frequent movement, such as walkways or vehicle paths, to maximize detection efficiency. Conversely, direct the red-marked zone towards areas with less traffic or activity.

By understanding and utilizing these orientation markers, you can optimize the bollard's responsiveness and energy usage, ensuring reliable illumination when and where it's needed most.

STEP 4: ACTIVATE YOUR VANDAL-007

Your VANDAL-007 Vandal-proof Solar Bollard is engineered with user convenience and durability in mind, featuring an automatic 'Switch ON' function that eliminates the need for a physical switch. This design supports the bollard's waterproof capabilities, making it even more resilient in various environmental conditions.

Upon unboxing, you'll find the solar panel protected by a black plastic cover, ensuring the device doesn't activate during

storage or transport. To turn your VANDAL-007 on, simply remove this cover. The bollard automatically powers up, signifying it's ready to harness solar energy.

There's no need for further action to activate the bollard. Once the black cover is removed, place your VANDAL-007 in the chosen location as per the previous installation steps, and it will begin functioning, using solar energy to power itself.

STEP 5: ADJUSTING COLOR TEMPERATURE WITH DUAL CCT FUNCTION (OPTIONAL FEATURE)

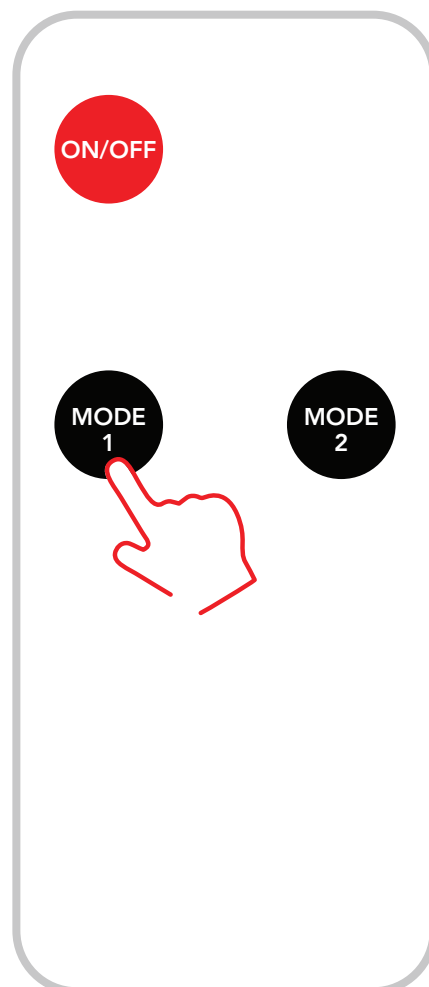
Some units of the VANDAL-007 Vandal-proof Solar Bollard come with an enhanced feature allowing for color temperature customization to match environmental needs or personal preferences. This Dual CCT (Correlated Color Temperature) function provides flexibility in lighting aesthetics.

If your model includes this feature, you'll receive a remote control specifically designed for adjusting the bollard's color temperature.

Activating Different Modes: Aim the remote control towards the solar bollard. Press the 'MODE 1' button to select the first color temperature setting, offering a certain visual warmth or coolness to the light emitted.

To experience the alternative lighting effect, press the 'MODE 2' button. This will switch the color temperature to a different setting, allowing you to visually compare and select your preferred ambiance.

Note: If there's no visible change or response from the bollard, ensure you're within the effective range of the remote control as detailed in its accompanying manual. The absence of physical buttons on the bollard itself is part of its vandal-proof design, consolidating all custom controls within the remote.



VANDAL - 007

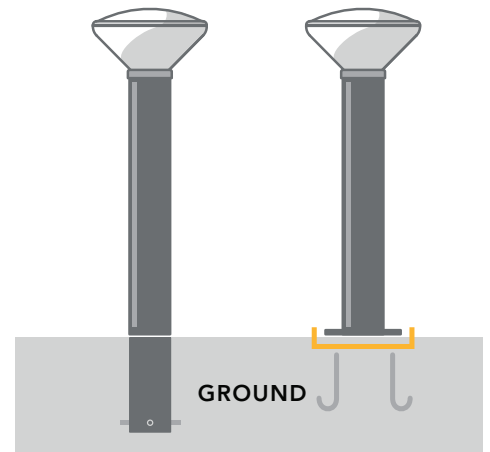
Solar Vandal Resistant Bollard Light

EASY INSTALLATION

NO CABLING • NO TRENCHING

The VANDAL comes in two different mounting type, both requiring neither trenching or cabling for a fast and economical installation.

Simply insert the bollard into concrete or mount it on anchor rods.



1 DIRECT BURIED 2 FLAT MOUNT

DIMENSIONS

All Dimensions Are In Inches

