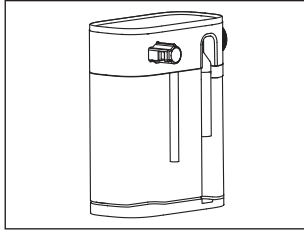
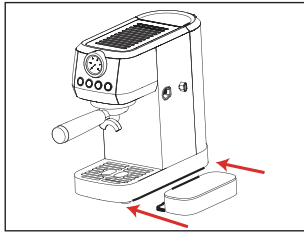


How to assemble the milk reservoir?

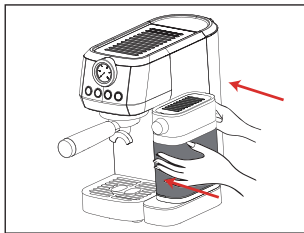
01. Make sure all parts assembled well.



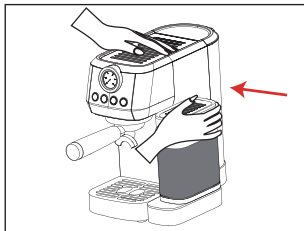
02. Insert the milk reservoir plate into the machine.



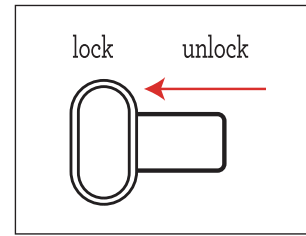
03. Use two hands to hold the milk reservoir and insert it into the machine. **Do not just use one hand!**



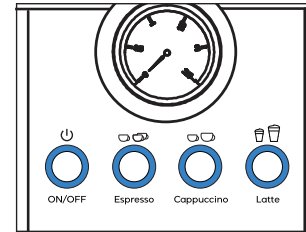
04. To avoid leakage, there is a little tight to insert the milk reservoir into the machine. Once the milk reservoir has been inserted into the hole, hold the machine with one hand, and push the milk reservoir to assemble in place with the machine.



05. Push the locker to “Lock” position.

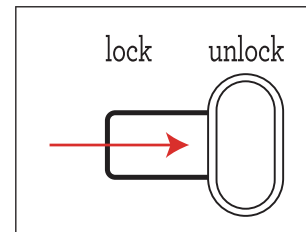


06. All buttons are fully illuminated=Ready.

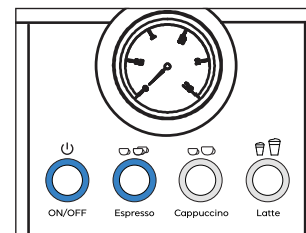


How to disassemble the milk reservoir?

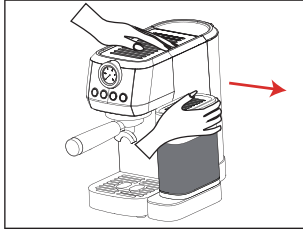
01. Push the locker to “unlock” position.



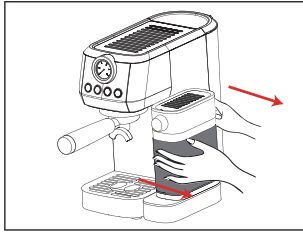
02. The Cappuccino and Latte buttons will turn off.



03. It could be a little tight to take out the milk reservoir. Please hold the coffee maker by one hand and take out the milk reservoir with strength by the other hand.

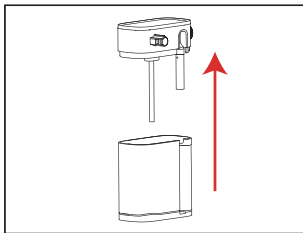


04. Then use two hands to hold the milk reservoir with lid and take it out of the machine. **Do not just use one hand!**

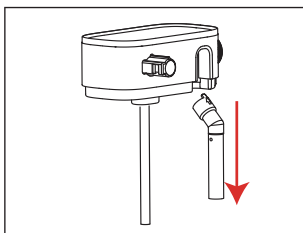


How to clean the parts of milk reservoir?

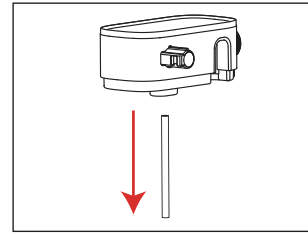
01. Take the lid out of milk reservoir.



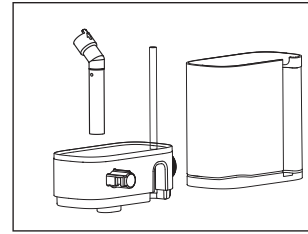
02. Take the milk tube out of lid.



03. Take the milk tube out of lid.



04. Wash all parts in warm water, or dishwasher.



Attention:

The milk-frothing system could get blocked by the milk residue left causing less or no milk foam created, which will badly influence coffee flavor or even make an unfavorable smell.

To avoid these, we recommend:

01. Run a cleaning cycle immediately after using the milk-frothing system.

02. Run a deep cleaning cycle and wash all parts every 3 days or 1 week (see user guide).