

How To Solve the Problem of Single and Double Shot Lights Flashing in white?

Some customers may meet the situation that Single and Double Shot buttons flashing in white alternately when plugged in.



This situation means that the machine can not recognize the water level. So the program needs to be corrected.

Please follow the steps below to correct the program.

Initialize the program of machine.

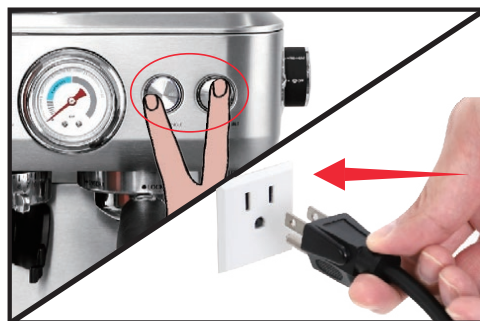
01. Unplug the machine.



02. Empty the water tank and put in back.



03. Hold pressing the Single and Double buttons at the same time. Then plug in.



04. Once plugged in, release the Single and Double buttons and press the HOT WATER button immediately.



07. The Single button will start flashing in red, and the Double button turns off, which means that the machine is in the process of initializing the program.



Note: The time between plugging in the machine and pressing the HOT WATER button should be within 2 seconds. Otherwise, it will fail to activate the program so that the problem could not be solved.

05. When the program is activated, both the Single and Double button will be flashing in red for eight times.



06. Then the Single button will keep flashing in red, and the Double button turns to flashing in white. Now the machine is ready to initialize. Press the Single button to initialize the program.

08. When the Single and Double buttons turn to flashing in white alternately again, the machine has finished initialize the program already. Unplug the machine and go to next step.

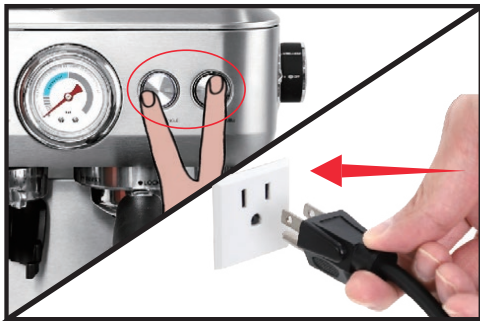


Correct the program of machine.

01. Fill the water tank with water.



02. Hold pressing the Single and Double buttons at the same time. Then plug it in.



03. Once plugged it in, release the Single and Double buttons and press the HOT WATER button immediately.



Note: The time between plugging in the machine and pressing the HOT WATER button should be within 2 seconds. Otherwise, it will fail to activate the program.

04. When the program is activated, both the Single and Double button will be flashing in red for eight times.



05. Then the Single button will keep flashing in red, and the Double button turns to flashing in white. Now the machine is ready to correct. Press the Double button to correct the program.



06. The Double button will start flashing in red, and the Single button turns off, which means that the machine is in the process of correcting the program.



07. When the Single and Double buttons turn off, the machine has finished correcting the program already. Unplug the machine and the machine is ready for use.



08. Plug it in and press the power button. All the four buttons will be flashing in white. It means that the program has been corrected successfully.

