



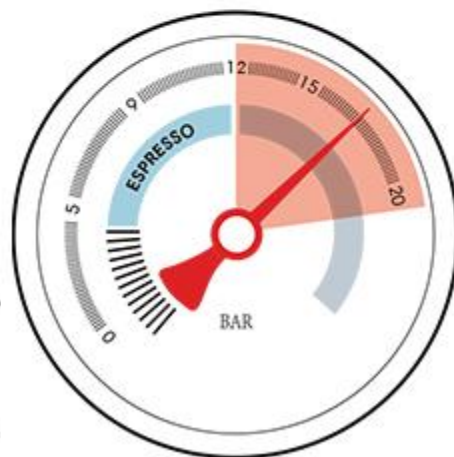
## PID Temperature Control



### High pressure zone - 12~20 zone

#### To resolve this:

01. Select a coarser grind setting and retry.
02. Decrease the amount of coffee grounds and retry.
03. Decrease the tamping pressure and retry.



### Low pressure zone - 0~5 zone

#### To resolve this:

01. Select a finer grind setting and retry.
02. Increase the amount of coffee grounds and retry.
03. Increase the tamping pressure and retry.

