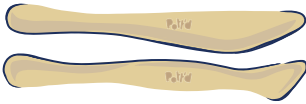


# Your Toolkit



## Knife Tools

For cutting and slicing clay. Also comes in handy for blending and smoothing surfaces.



## Needle Tool

For creating holes and openings, also perfect for scoring surfaces before joining.



## Blending Tool

For blending clay between join surfaces. For example: adding a rim to a trinket dish or attaching a handle to a jug.



## Ribbon Tool

For trimming and squaring off the rims of pots. Also great for hollowing out internal cavities of your creations!



## Premium Air-Dry Clay

Our premium clay is specially formulated to be smooth, supple and a joy to work with. It dries super hard without cracking, with no need to fire in a kiln! Simply allow your creations to dry for 1-2 days until bone dry to the touch.



## Sponge

Add some water and use the damp sponge to smooth over cracks and creases before drying.



## Large Coverage Brush

For covering large areas with paint and varnish.



## Fine Detail Brush

For the artist in you - use this for adding the finer details.



## Gloss Varnish

For that glossy pro finish! Also protects your creation from light moisture. Apply on top of dry white or coloured paint and leave to seal completely for 24 hours. Pour carefully to avoid extra air bubbles.



## Base Coat

Apply 1-2 coats on top of your dried clay to create a nice base for painting. First coat dries in 30 minutes.

© Copyright Pott'd Creations Ltd 2022 - 2023



Avoid creating and inhaling excessive clay dust. Please do not eat or drink from your clay creations. Air dry clay is porous and may absorb water even after drying. The paint and varnish will provide good protection, however outdoor use is not advised.



**Level:** Beginner



**Clay:** ¼ bag



**It's time to get Pott'd! Top tips before you start:**

Use a large, flat work surface with plenty of space to get creative. Keep a small bowl of cold water nearby which will come in handy for slipping joins!

To **'Score'** is to scratch small grooves into join surfaces to help them bond together. To **'Slip'** is to add a small amount of water to each join surface, making them stick together and form a secure bond. To **'Pott'** is to unleash your creative side, making your very own unique clay creation that is guaranteed to impress friends and family.

1



Grab yourself a cheeky handful of clay. Cradle, smooth and caress the clay into a smooth ball, as shown.

2



Push your thumb through the centre of the clay until you reach the middle of the ball.

3



Slowly turn the ball, making the hole wider using your thumb. Keep supporting and smoothing the sides with your other hand. Not come out quite right? Squeeze it together and start again, no one's watching :)

4



When you're happy with your shape, start to smooth the surfaces. Use a little water to make the process easier. A little water goes a long way!

5



Smooth the rim of your pinch pot with your finger for a clean line.

6



Add an optional stand for your pot. Make a small disc shape with your desired thickness and width.

7



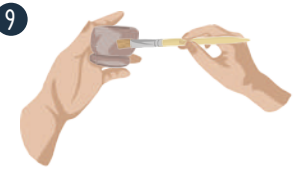
Remember how to score and slip? Good. Score the bottom of your pinch pot and disc, slip the base by adding a small amount of water. Blend the two pieces together using your finger or the blending tool.

8



Nearly there! Dampen your sponge and make sure all the edges, cracks and creases are nice and smooth. Let your creation dry for 1 - 2 days until it's bone dry.

9



Time to paint! Apply the white Base Coat. Once dry, decorate your pot with your Pott'd Paints. Follow with the gloss varnish to give it a shiny finish. Leave to seal for 24 hours.





## Pinch Pot Hall of Fame



@pott'dpeople

More tutorials here:





Level: Beginner



Clay: ¾ bag



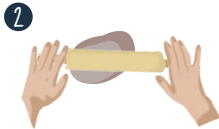
**It's time to get Pott'd! Top tips before you start:**

Use a large, flat work surface with plenty of space to get creative. Keep a small bowl of cold water nearby which will come in handy for slipping joins!

To **'Score'** is to scratch small grooves into join surfaces to help them bond together. To **'slip'** is to add a small amount of water to each join surface, making them stick together and form a secure bond. To **'Pott'** is to unleash your creative side, making your very own unique clay creation that is guaranteed to impress friends and family.



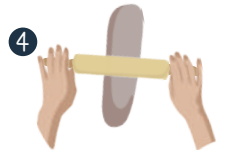
Grab yourself a cheeky handful of clay. Cradle, smooth and caress the clay into a smooth ball.



Place baking paper on top of the ball of clay and use a rolling pin to roll it out to roughly the thickness of your index finger, or 1-2 cm. Make sure it's looking smooth and even!



Got a bowl lying around? Use one roughly 10cm in diameter and cut around it with the knife tool. This will form the base of your pot. Feel free to use a large mug or a small vase :)



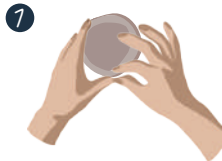
Grab your remaining clay and roll it out into a long rectangular shape. This will form the wall of your pot.



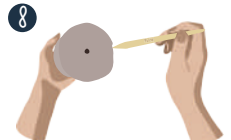
Use a ruler to cut and straighten the long edges of your clay. Enjoy the satisfying results of your clean, sharp slices.



Remember how to score and slip? Good. Score and slip the edge of your pot base, then flip your clay onto its side and wrap it tightly around your base. Use the knife tool to cut off any excess clay where the sides overlap.



Time to seal the sides. Score and slip each side of the join, then blend the edges together by pinching gently with your finger and thumb.



Wait around 30 minutes for the clay to dry slightly, then carefully lift and blend together the sides and base. Add a small hole in the base if you like, to drain excess water after potting your plant.



Nearly there! Dampen your sponge and make sure all the edges, cracks and creases are nice and smooth. Let your creation dry for 1 - 2 days until it's bone dry.



It's time to paint! Apply the white Base Coat. Once dry it's time to decorate your pot with your Pott'd Paints. Follow with the gloss varnish to give it a shiny finish. Leave to seal for 24 hours.



Your Pott'd plant pot makes a lovely home for all types of house plants, we recommend potted succulents and cacti. Remove the plant when watering to protect your creation.





## Plant Pot Hall of Fame

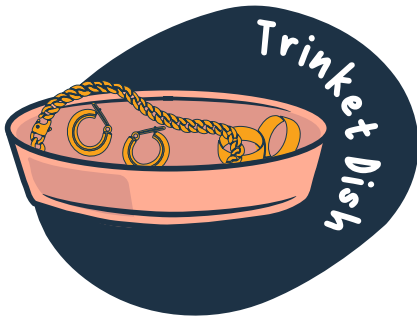


@pottpeople

More tutorials here:







**Level:** Beginner



**Clay:** ¼ bag



**It's time to get Pott'd! Top tips before you start:**

Use a large, flat work surface with plenty of space to get creative. Keep a small bowl of cold water nearby which will come in handy for slipping joints!

To **'Score'** is to scratch small grooves into join surfaces to help them bond together. To **'Slip'** is to add a small amount of water to each join surface, making them stick together and form a secure bond. To **'Pott'** is to unleash your creative side, making your very own unique clay creation that is guaranteed to impress friends and family.

1



Grab yourself two lumps of lovely clay and roll into two smooth, satisfying balls (roughly to the above sizes).

2



Take the larger clay ball and roll it out into a round slab. Use baking paper on top of the clay to prevent clay sticking! A rolling pin is also handy to achieve a smooth, even finish.

3



Place a round object (like a ramekin or small bowl) onto your clay slab and cut around it using your knife tool, this is the base of your trinket dish.

4



Roll the smaller clay ball into a long rectangular slab. Using a ruler or straight edge tool, cut a long rectangle. Enjoy those sharp, satisfying edges. This piece will form the rim of your dish!

5



Score the outside section of your circle and the bottom of the rim using your knife tool.

6



Add the rim to the top of your base and carefully blend the pieces together using your blending tool. Remove any excess clay where the edges of the rim connect, and blend together. Use some water if the clay is a little dry!

7



Use your finger to smooth the rim of your trinket for a clean line.

8



Dampen your sponge and make sure all the edges, cracks and creases are nice and smooth. Let your creation dry for 1 - 2 days until it's bone dry.





# Trinket Dish Hall of Fame



@pott'dpeople

More tutorials here:







**Level:** Intermediate



**Clay:** ½ bag



**It's time to get Pott'd! Top tips before you start:**

Use a large, flat work surface with plenty of space to get creative. Keep a small bowl of cold water nearby which will come in handy for slipping joins!

To **'Score'** is to scratch small grooves into join surfaces to help them bond together. To **'Slip'** is to add a small amount of water to each join surface, making them stick together and form a secure bond. To **'Pott'** is to unleash your creative side, making your very own unique clay creation that is guaranteed to impress friends and family.

1



Create two pinch pots using the pinch pot guide (steps 1-5).

2



Score the rims of both pinch pots with your knife tool.

3



Bring the two pinch pots together and blend using your blending tool or your finger. This is forming the base of your vase. Use a small amount of water and the sponge to help smooth the edges :)

4



To make the opening for the neck of the vase, cut a small circle from the top of your vase using your needle tool.

5



For the neck, roll out a rectangle of clay the same thickness as the vase. We recommend using a rolling pin to make it nice and smooth and even! Score and blend the sides together to make a cylinder.

6



Score the edges around the cutout hole and rim of the cylinder.

7



Important step! Take your time to blend and smooth the two edges together. You want to make sure you fully blend the vase base and neck to avoid catastrophe later!

8



Smooth and shape the outside of your vase until you are happy with the finished result. Use your tools or fingers, either is fine.

9



Smooth the rim of your vase with your finger for a clean line. Use the sponge and a little water to smooth any cracks or rough edges. Use your needle tool to initial it on the bottom if you're feeling especially arty. Let your vase dry for 1-2 days before painting.

10



Time to paint! Apply the white Base Coat. Once dry, decorate your pot with your Pott'd Paints. Follow with the gloss varnish to give it a shiny finish. Leave to seal for 24 hours.





## Vase Hall of Fame



@pott'dpeople

More tutorials here:

