

ilavie

Instruction Booklet

Single Serve Coffee Brewer

Model No.: CM9429D-UL



For your safety and continued enjoyment of this product, always read the instruction book carefully before using.

CONTENTS

- Important Safeguards 1
- Parts Identification 4
- Specification 5
- How to Use 5
- Using the Capsule Adaptor 6
- Using the Ground Coffee Adaptor 7
- Using the Reusable Pod 9
- Care and Cleaning Instructions 11
- Descaling Instructions 12
- Troubleshooting 13
- Warranty Registration 14

IMPORTANT SAFEGUARDS

When using this electrical appliance, basic safety precautions should always be followed, including the following:

1. Read all instructions.
2. This appliance is not intended for use by persons (including children) with reduced physical, sensory, or mental capabilities, or lack of experience and knowledge, unless they are closely supervised and instructed concerning use of the appliance by a person responsible for their safety.
3. Close supervision is necessary when any appliance is used by or near children. Children should be supervised to ensure that they do not play with the appliance.
4. Coffee maker must be operated on a flat surface away from the edge of counter to prevent accidental tipping.
5. **Do not** let cord hang over edge of table or counter or touch hot surfaces, including stove.
6. **Do not** use outdoors.
7. **Do not** place on or near a hot gas or electric burner, or in a heated oven.
8. **Do not** place coffee maker in a cabinet when in use.
9. **Do not** operate any appliance with a damaged supply cord or plug, or after the appliance malfunctions or has been dropped or damaged in any manner. Supply cord replacement and repairs must be conducted by the manufacturer, its service agent, or similarly qualified persons in order to avoid a hazard.
10. The use of accessory attachments not recommended by the appliance manufacturer may cause injuries.
11. To protect against electric shock, do not place cord, plug, or coffee maker in water or other liquid.
12. Unplug from outlet when the coffee maker is not in use and before cleaning. Allow to cool before putting on or taking off parts and before cleaning the appliance.
13. To reduce the risk of fire, do not store anything directly on top of the appliance surface when the appliance is in operation.
14. Be certain lid is securely in place during the brewing cycle.
15. To unplug, grasp the plug and pull from the outlet. Never pull from the power cord.
16. To avoid hot water spraying from the piercing needle, do not lift the lid during the brew process.

17. To reduce the risk of fire or electric shock, do not remove the bottom cover of the coffee maker. There are no user-serviceable parts inside. Repair should be done by authorized service personnel only.
18. There are two sharp needles that puncture the capsules. One is located inside the capsule adaptor and the other is located on the top underside of the adaptor compartment. To avoid risk of injury do not place fingers inside either parts. Also exercise caution when cleaning the parts.
19. Only use capsules intended for this appliance. If the capsule does not fit, do not force the capsule into the appliance.
20. Do not use appliance for other than intended use.

SAVE THESE INSTRUCTIONS

HOUSEHOLD USE ONLY

Warning

To avoid damage to your Coffee Maker, never operate your Single Serve Coffee Maker when the water tank is empty.

NOTE: If the Add water light on the control panel flashes, it indicates that there is no water in the water tank, please add room temperature water into the water tank, then re-start to work.

NOTES ON THE PLUG:

This appliance has a polarized plug (one blade is wider than the other). To reduce the risk of electric shock, this plug will fit in a polarized outlet only one way. If the plug does not fit fully into the outlet, reverse the plug. If it still does not fit, contact a qualified electrician. Do not modify the plug in any way.

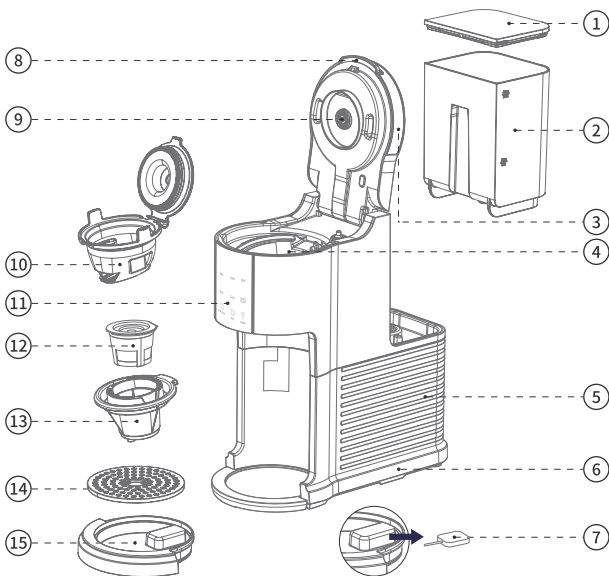
NOTES ON THE CORD

- a) A short power-supply cord (or detachable power-supply cord) is provided to reduce risks resulting from becoming entangled in or tripping over a longer cord.
- b) Longer detachable power-supply cords or extension cords are available and may be used if care is exercised in their use.
- c) If a long detachable power-supply cord or extension cord is used:
 - 1) The marked electrical rating of the detachable power-supply cord or extension cord should be at least as great as the electrical rating of the appliance;
 - 2) If the appliance is of the grounded type, the extension cord should be a grounding- type 3-wire cord;
 - 3) The longer cord should be arranged so that it will not drape over the counter top or table top where it can be pulled on by children or tripped over.

ELECTRIC POWER

If the electrical circuit is overloaded with other appliances, your appliance may not operate properly. It should be operated on a separate electrical circuit from other appliances.

Parts Identification



- ① Water Tank Cover
- ③ Adaptor Compartment Lid
- ⑤ Main Housing
- ⑦ Dredge Needle(back of the ⑮)
- ⑨ Water Outlet Needle
- ⑪ Control Panel
- ⑬ Capsule Adaptor
- ⑮ Drip Tray

- ② Water Tank
- ④ Adaptor Compartment
- ⑥ Bottom Cover
- ⑧ Front Lid Tab
- ⑩ Ground Coffee Adaptor
- ⑫ Reusable Pod
- ⑭ Drip Tray Cover

Specification

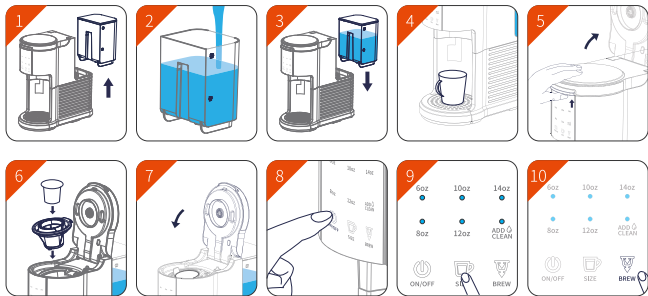
Model	CM9429D-UL
Power Supply	120V~60HZ
Power	1000W
Dimension	283*140*307mm

BEFORE USING FOR THE FIRST TIME

CAUTION: To protect against electrical shock, do not immerse the Coffee Maker or allow the power cord to come into contact with water or other liquids.

1. Remove all packing material and labels from the inside and outside of the Coffee Maker. Place the unit on a flat, clean surface. Make sure to remove both adaptors from the inner packaging.
2. Before use, thoroughly clean both adaptors with warm soapy water.
3. To clean the inside of the unit, it is recommended to brew a full tank of water, which corresponds to brew 3 to 4 tall cups.
4. Lift the water tank up and remove it from the base of the unit.
5. Remove the lid and fill the water tank to the MAX indicator line with cold water.
NOTE: Never fill the water tank past the MAX indicator line and ensure water level is above the MIN indicator line.
6. Put the lid back and put the water tank back into place. Place down firmly to make sure it is securely in place.
7. Place the empty cup, mug, or tumbler in position on the drip tray cover.
NOTE: Do not add any adaptor for this initial cleaning.
8. Press the Power button. The product is powered on and the indicator light is on.
9. To select the brew size (6 oz., 8 oz., 10 oz., 12 oz., or 14 oz.), press the Size button until the indicator light illuminates the desired size.
10. Press the Brew button. The machine starts to work.
11. At the end of the cycle, the Coffee Maker enter standby mode.
IMPORTANT: Repeat this process twice or more to thoroughly clean the machine before using for the first time.
12. Unplug the Coffee Maker when not in use.

Using the Capsule Adaptor



1. Lift the water tank up and remove it from the base of the unit. (Fig.1)
2. Remove the lid and fill the water tank to the MAX indicator line with cold water.
NOTE: Never fill the water tank past the MAX indicator line and ensure water level is above the MIN indicator line. (Fig.2)
IMPORTANT: For optimal flavor, distilled water is preferred.
3. Put the lid back and put the water tank back into place. Place down firmly to make sure it is securely in place. (Fig.3)
4. Place the empty cup, mug, or tumbler in position on the drip tray cover. (Fig.4)
5. Pull the adaptor compartment lid's front lid tab up to unlock and lift the lid. (Fig.5)
6. Place the capsule adaptor into the adaptor compartment. Choose the capsule adaptor. Add the capsule of your choice into the adaptor. (Fig.6)
8. Press the adaptor compartment lid down firmly to make sure the capsule is flush with the adaptor. An audible click can be heard as the lid is locked firmly into position, and the top of the capsule will be punctured. (Fig.7)
9. Plug the Coffee Maker into a 120V AC electrical wall outlet.
10. Press the Power button. The product is powered on and the indicator light is on. (Fig.8)
11. To select the brew size (6 oz., 8 oz., 10 oz., 12 oz., or 14 oz.), press the Size button until the indicator light illuminates the desired size. (Fig.9)
12. Press the Brew button. The indicator light begins to flash as the coffee maker begins heating the water. (Fig.10)
13. The Coffee Maker begins heating the water.
14. When the water has reached the optimum temperature, the pump will then activate and coffee will begin to stream through the nozzle.
15. To interrupt the brewing cycle at any time, press the Size button. Then remove the plug from the wall outlet.

- At the end of the cycle, the Coffee Maker enter standby mode.
- Allow unit to cool before removing the used capsule to discard.
- Unplug the Coffee Maker when not in use.

Using the Ground Coffee Adaptor



The ground coffee adaptor allows you to create your own favorite blend of coffee. Personalize your blends by adding a dash of cinnamon, orange peel, cardamom or vanilla bean for flavoring, to name a few options.

- Lift the water tank up and remove it from the base of the unit. (Fig.1)
- Remove the lid and fill the water tank to the MAX indicator line with cold water.
NOTE: Never fill the water tank past the MAX indicator line and ensure water level is above the MIN indicator line. (Fig.2)
IMPORTANT: For optimal flavor, distilled water is preferred.
- Put the lid back and put the water tank back into place. Place down firmly to make sure it is securely in place. (Fig.3)
- Place the empty cup, mug, or tumbler in position on the drip tray cover. (Fig.4)
- Pull the adaptor compartment lid's front lid tab up to unlock and lift the lid. (Fig.5)

6. Place the ground coffee adaptor into the adaptor compartment.

NOTE: Do not past the Max indicator line.

7. Choose the ground coffee adaptor and fill it with medium size ground coffee. (Fig.6)
8. Once the coffee has been added, close the ground coffee adaptor lid. (Fig.7)
9. Press the adaptor compartment lid down firmly. An audible click can be heard as the lid is locked firmly into position, and the top of the capsule will be punctured. (Fig.8)
10. Plug the Coffee Maker into a 120V AC electrical wall outlet.
11. Press the Power button. The product is powered on and the indicator light is on. (Fig.9)
11. To select the brew size (6 oz.,8 oz., 10 oz., 12 oz.,or 14 oz.), press the Size button until the indicator light illuminates the desired size. (Fig.10)
12. Press the Brew button. The indicator light begins to flash as the coffee maker begins heating the water. (Fig.11)
13. The Coffee Maker begins heating the water.
14. When the water has reached the optimum temperature, the pump will then activate and coffee will begin to stream through the nozzle.
15. To interrupt the brewing cycle at any time, press the Size button. Then remove the plug from the wall outlet.
16. At the end of the cycle, the Coffee Maker enter standby mode.
17. Allow unit to cool before removing the used capsule to discard.
18. Unplug the Coffee Maker when not in use.

Using the Reusable Pod



The reusable pod can be used to hold tea leaves, herbal tea, or small amounts of ground coffee. This is perfect for brewing steeped beverages.

1. Lift the water tank up and remove it from the base of the unit. (Fig.1)

2. Remove the lid and fill the water tank to the MAX indicator line with cold water.

NOTE: Never fill the water tank past the MAX indicator line and ensure water level is above the MIN indicator line. (Fig.2)

IMPORTANT: For optimal flavor, distilled water is preferred.

3. Put the lid back and put the water tank back into place. Place down firmly to make sure it is securely in place. (Fig.3)

4. Place the empty cup, mug, or tumbler in position on the drip tray cover. (Fig.4)

5. Pull the adaptor compartment lid's front lid tab up to unlock and lift the lid. (Fig.5)

6. Place the tea leaves or other material inside the reusable pod. (Fig.6)

7. Place the capsule adaptor and reusable pod into the adaptor compartment. (Fig.7)

8. Press the adaptor compartment lid down firmly. An audible click can be heard as the lid is locked firmly into position, and the top of the capsule will be punctured. (Fig.8)

9. Plug the Coffee Maker into a 120V AC electrical wall outlet.

10. Press the Power button. The product is powered on and the indicator light is on. (Fig.9)

11. To select the brew size (6 oz., 8 oz., 10 oz., 12 oz., or 14 oz.), press the Size button until

the indicator light illuminates the desired size. (Fig.10)

12. Press the Brew button. The indicator light begins to flash as the coffee maker begins heating the water. (Fig.11)
13. The Coffee Maker begins heating the water.
14. When the water has reached the optimum temperature, the pump will then activate and coffee will begin to stream through the nozzle.
15. To interrupt the brewing cycle at any time, press the Size button. Then remove the plug from the wall outlet.
16. At the end of the cycle, the Coffee Maker enter standby mode.
17. Allow unit to cool before removing the used capsule to discard.
18. Unplug the Coffee Maker when not in use.

Care & Cleaning Instructions

1. Always make sure Coffee Maker is unplugged and the drip tray and cover are cool before removing from the base.
2. Rinse drip tray and cover and replace in the Coffee Maker base.
3. Press the adaptor compartment's front lid to unlock and lift the lid.
4. Remove the used capsule from the capsule adaptor and discard. Rinse the capsule adaptor in warm water before each use.
5. When using the reusable ground coffee adaptor, discard the used coffee. Wash adaptor in warm, soapy water, to remove all coffee grinds. Rinse well.
NOTE: Both the capsule and the ground coffee adaptors are top rack dishwasher safe.
6. Use a damp paper towel or sponge to completely remove any residue from the adaptor compartment.
7. Wipe the exterior of the Coffee Maker with a damp cloth to remove superficial stains. For stubborn stains, use a nylon or plastic pad with a non-abrasive cleanser. Do not use metal scouring pads or abrasive cleansers.

Descaling Instructions

After 300 cycles, the CLEAN light flash to remind you to clean and descale your coffee maker. Special cleaning of your coffee maker is recommended at least twice a year, depending on frequency of use and quality of water used in the unit. If water in your area is especially hard, the following cleaning procedure should be performed more often, since minerals in water can detract from the flavor of the coffee and possibly lengthen brew time.

1. Fill water tank with 1 part white vinegar to 3 parts cold water
2. Do not add any adaptor.
3. Place an empty tumbler in position on the drip tray cover.
4. Press and hold the Size Button and Brew button at the same time for 5 seconds to start cleaning.
5. the CLEAN indicator is always on.
6. The heater will starts to heat up. After heating, it will be pre-soaked for a period of time and then the hot water will be pumped out to complete a cleaning procedure.
7. Repeat steps 3 to 6 until the water tank is empty.
8. Following the same procedure, continue to run clean water through the Coffee Maker three times.
9. Unplug the Coffee Maker when not in use.
10. Dry parts thoroughly. Wipe the Coffee Maker's exterior with a dry cloth.
11. During using, if the coffee cannot be delivered normally for a long time, check whether the water outlet pin and the capsule adapter are blocked, and use a needle to clean the relevant blocked hole.
12. When cleaning, also check whether the pins on the water outlet pin and the capsule adapter are clear. If there is blockage, use a needle to clean the corresponding blocked hole.

Troubleshooting

Phenomenon	Cause	Solution
Blinking light, not working	Lid open, automatic protection.	Close lid, restart power.
Little water output	Inlet or outlet clogged. Water pipe clogged.	Use dredge needle to clear inlet or outlet. Use descaling function.
Grounds in your coffee	Too fine coffee powder . Too much coffee powder overflowing.	Use medium to medium-fine ground coffee. Do not exceed the maximum line.
Coffee splashing out	Cup too far from outlet.	Use a cup with a suitable height.
Undesirable coffee taste	New machine has taste. Poor water quality. Incorrect coffee-to-water ratio.	Run several cycles of brewing with clean water. Use filtered water. Use the recommended coffee-to-water ratio.
Coffee not hot enough	Brewing temperature is 185 degrees Fahrenheit, heat loss depends on room temperature.	Use a thermal mug. Drink the coffee as soon as possible after brewing.
Water drips after brewing	Water vapor condenses on the lid, excessive water left in the system after brewing.	Open the lid after brewing to allow the water to drain and vapor to evaporate.
Leaking water	Cracked water tank or malfunctioning components.	Check for cracks in the water tank or other components, and contact customer service if necessary.
Machine won't turn on	Faulty power source, internal components, or electrical wiring.	Check power source and wiring, restart machine, or contact customer service.

WARRANTY AND SERVICE

Limited One-year Warranty



ilavie products warranty extends only to the original customer purchaser of the product and does not extend to any product that has been used for commercial, rental, or any other use in which the product is not intended for.

It is warranted by the manufacturer to be free from all defects in materials or workmanship for a period of one year from the date of original purchase.

Exclusions From The Terms Of The Limited Warranty

This warranty does not cover normal wear and tears parts and does not apply to any product that has been tempered with or used for commercial purposes.

This warranty does not cover damage caused by abuse, accident, alteration, misuse, tampering or vandalism, negligent handling or damage due to mishandling in transit or shipping. This warranty does not cover damage or defects caused by or resulting from repairs, service or alterations to the product or any of its parts, which have been performed by a repair person not authorized by the manufacturer. This warranty is effective only if the product is purchased and operated in the USA, and does not extend to any units which have been used in violation of written instructions furnished by the manufacturer, or to units which have had the serial number removed, altered, defaced or rendered illegible.

Support

If you have any issues or questions regarding our products, please feel free to contact Moolan Customer Service Team:

 ilavie-service@outlook.com

ilavie

For customer service and product warranty:



ilavie-service@outlook.com



Intertek
2003398

CONFORMS TO UL STD. 1082
CERT. TO CSA STD. C22.2
NO. 60335-1 & 60335-2-15