



mooshu™ TRAINERS

FIRST STEPS WITH SWEET STYLE

RIGHT FOOT

LEFT FOOT

WRITE MEASUREMENT HERE

LET'S MEASURE THE PIGGIES BEFORE THEY GO TO MARKET.

Mooshu Trainers believes in finding the proper fit. Because every printer is different, traditional, downloadable sizing scales are not accurate. Our fit experts prefer using a direct heel-to-toe measurement to determine correct sizing. Please print this sizing guide and use the instructions below to guide your measuring process.

THIS LITTLE PIGGIE WENT TO MARKET

Let's start with the right food. Place this sheet on a flat surface. Have your child stand on this paper, with one foot on the pig.

THIS LITTLE PIGGIE STAYED HOME

Place a mark at the tip of the big toe and a line at the back center of the heel. Have your child take a break. Label this sheet of paper RIGHT FOOT.

THIS LITTLE PIGGIE HAD ROAST BEEF

Measure from the center of the mark for the back of the heel to the center of the mark for the big toe. Write this measurement.

THIS LITTLE PIGGIE HAD NONE

Repeat steps one through three using the left foot.

BUT THIS LITTLE PIGGIE WENT WEE WEE WEE ALL THE WAY HOME

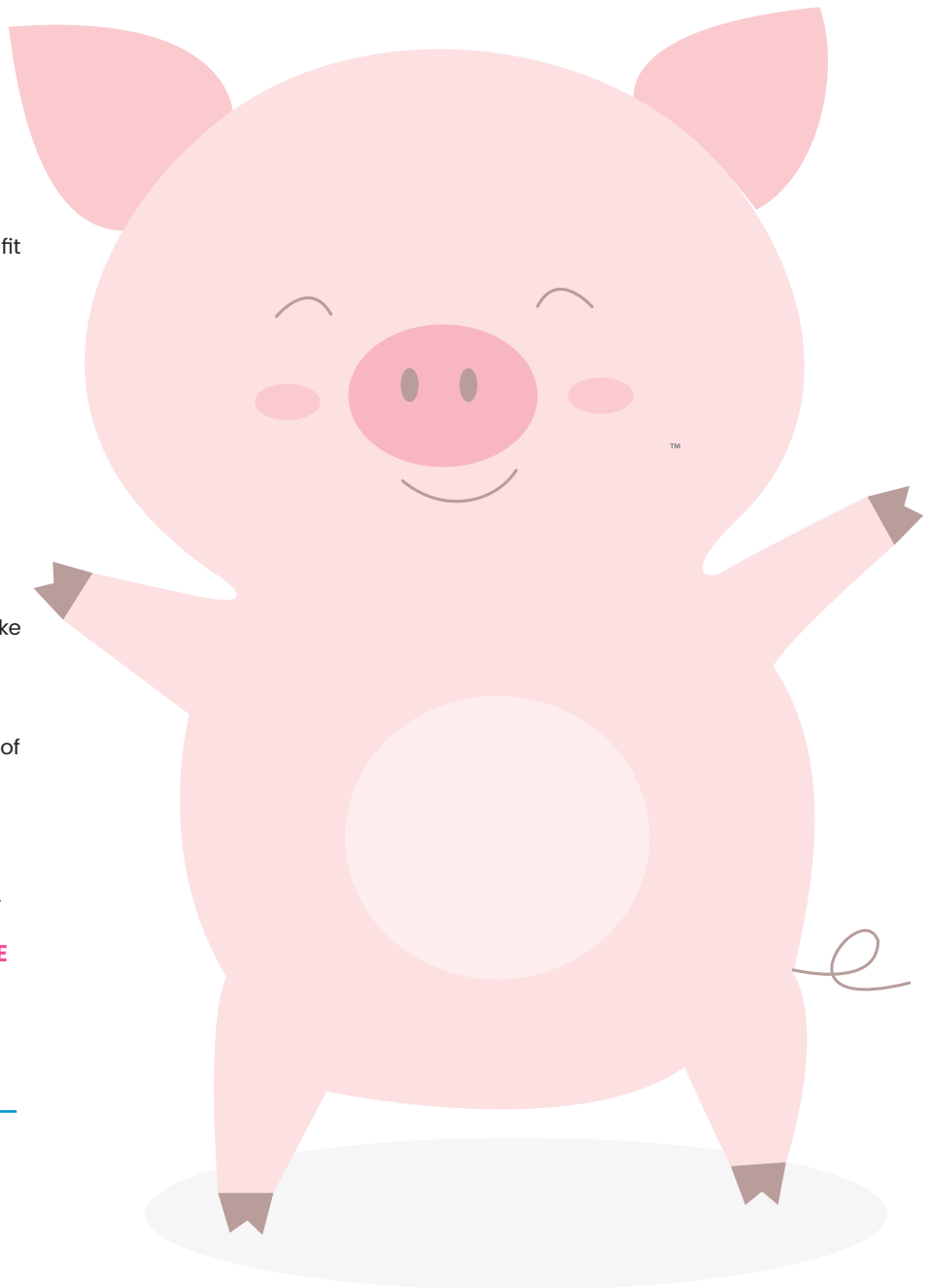
Refer to your measurements as you review our online chart.

ONLINE SIZE CHART

www.MooshuTrainers.com/sizing-info

QUESTIONS?

Contact our Fit Experts at Mooshu Trainers. Call 214.803.9295 or email us at info@MooshuTrainers.com. We are here to help.



PLACE FOOT ON PIG!