

# User Manual

## Cordless Tire Inflator



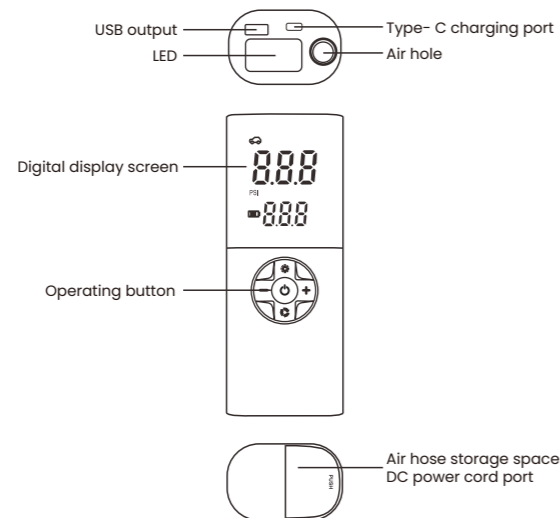
**ROKIT**

### Safety Instruction

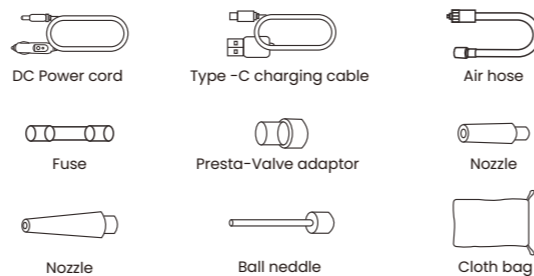
Read the instructions carefully before using!  
**The machine body and air hose will be hot if work too long time!**  
**Allow 10 minutes to cool down before using again!**  
**This product is not a toy and children are forbidden to use!**

### Product introduction

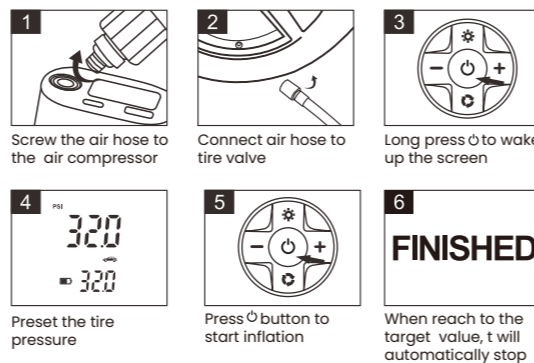
#### Description



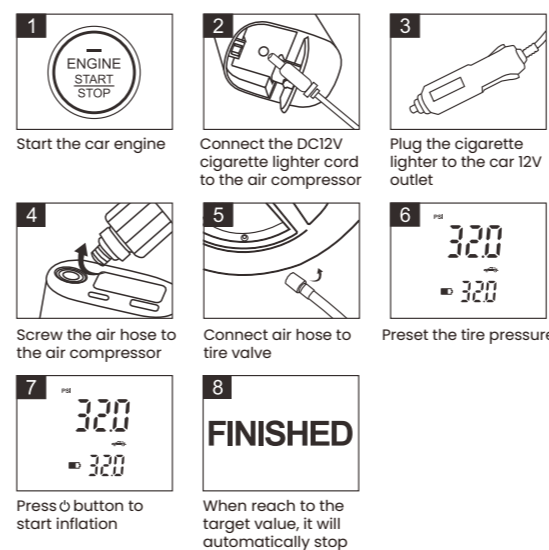
### Accessories



### Operation Guide 1 ( Battery power)

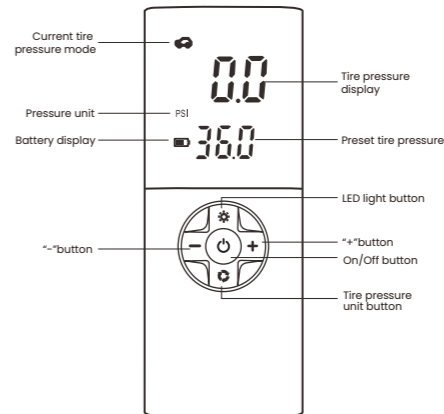


### Operation Guide 2( DC 12V Power)



### Pre-set the pressure

Long press "0" button to choose the tire pressure unit, press "+" or "-" button to increase / decrease the tire pressure, after the value stop flashing. Press "0" to start inflating. When reach to the target value, it will stop automatically.



### Parameter

Product Name	Cordless Tire Inflator
Model No.	Ti 2
Product size	71*49*180mm
Voltage	12V
Power	90w
Battery capacity	7800mAh/2600mAh*3
Power cord	USB Type-C & DC 12V

### Features

1. Ideal for inflating car tires, motorcycle tires, sporting equipment, etc.
2. Maximum inflation pressure 150 PSI.
3. Digital pressure gauge measures in PSI, BAR, KPA or kg/cm<sup>2</sup>.
4. Accurate to ±1 PSI.
5. Use as a power bank.
6. Five buttons easy to operate, digital display.
7. Cord and cordless dual use.
8. Convenient use in dark night with LED light.
9. Pre-set pressure, stop automatically.
10. Mini size, easy to storage.

### WARNINGS/CAUTIONS

1. You must charge your air compressor fully before the initial use.
2. Please do not disassemble or assemble this product.
3. Do not place the machine near the heat source, such as car exhaust pipe mouth.
4. Normal operation of this product will cause the product to overheat a little, which is normal.
5. To make sure the air compressor work well, the continuous inflation time should not be too long. If you need to work for a long time, please rest intermittently.
6. If the product is not used or no pressure change 180 seconds when the display screen is bright, it will cut off the power automatically.
7. Do not allow children to connect/disconnect the air compressor to/from power sources.
8. Do not use the air compressor near flammable fluids or gases.
9. If the air compressor is going to be unused for long periods of time, it should be stored in a dry place, inaccessible to children.
10. For your own safety, use only the parts and accessories included in this package.
11. Use of accessories and other parts that are not mentioned in the instructions may increase