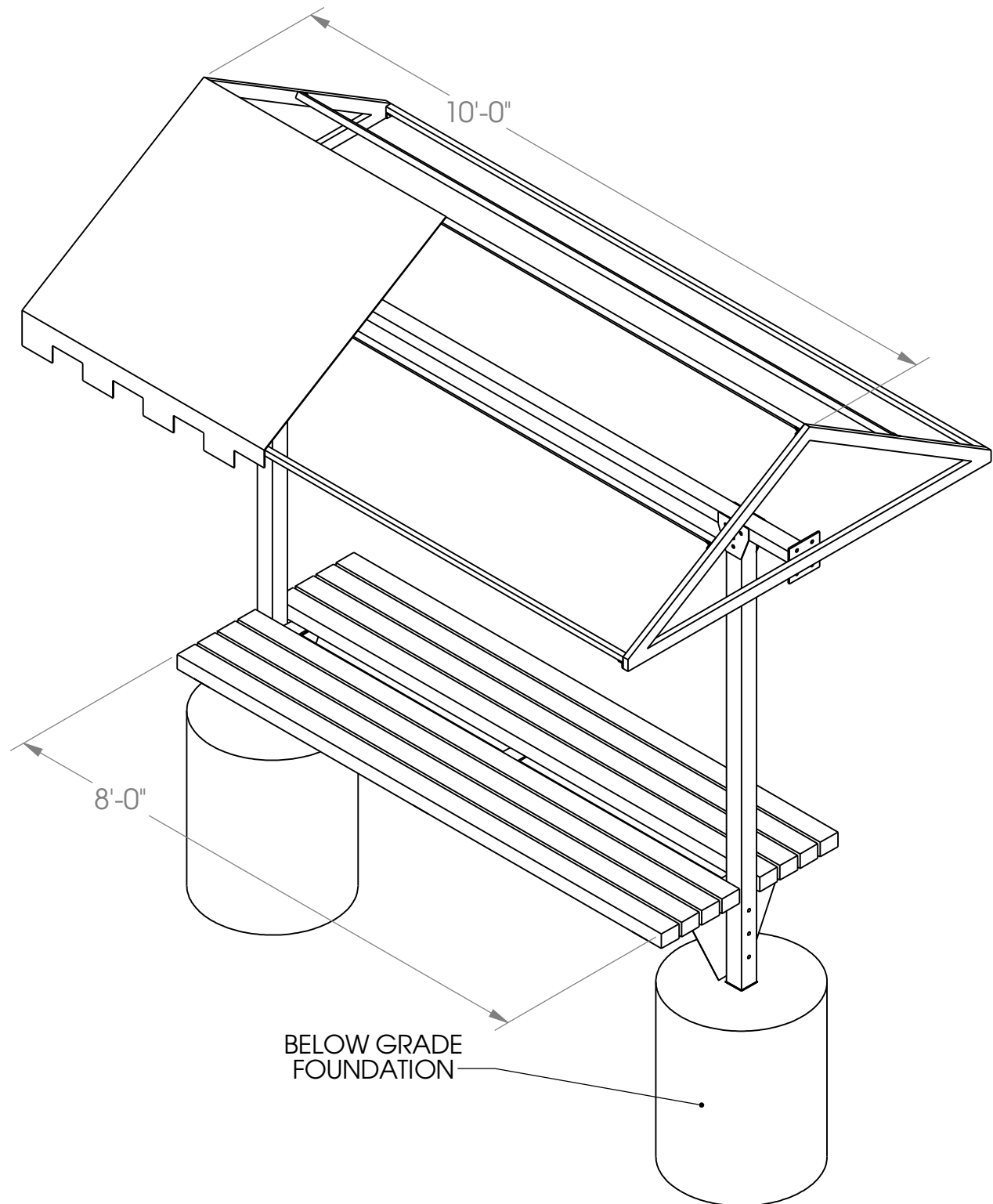


Cabana Bench 10' - Direct Burial



ISOMETRIC VIEW

PROPRIETARY AND CONFIDENTIAL
THE INFORMATION CONTAINED IN THIS
DRAWING IS THE SOLE PROPERTY OF
SUNTRENDS INC. ANY
REPRODUCTION IN PART OR AS A WHOLE
WITHOUT THE WRITTEN PERMISSION OF
SUNTRENDS INC. IS
PROHIBITED.

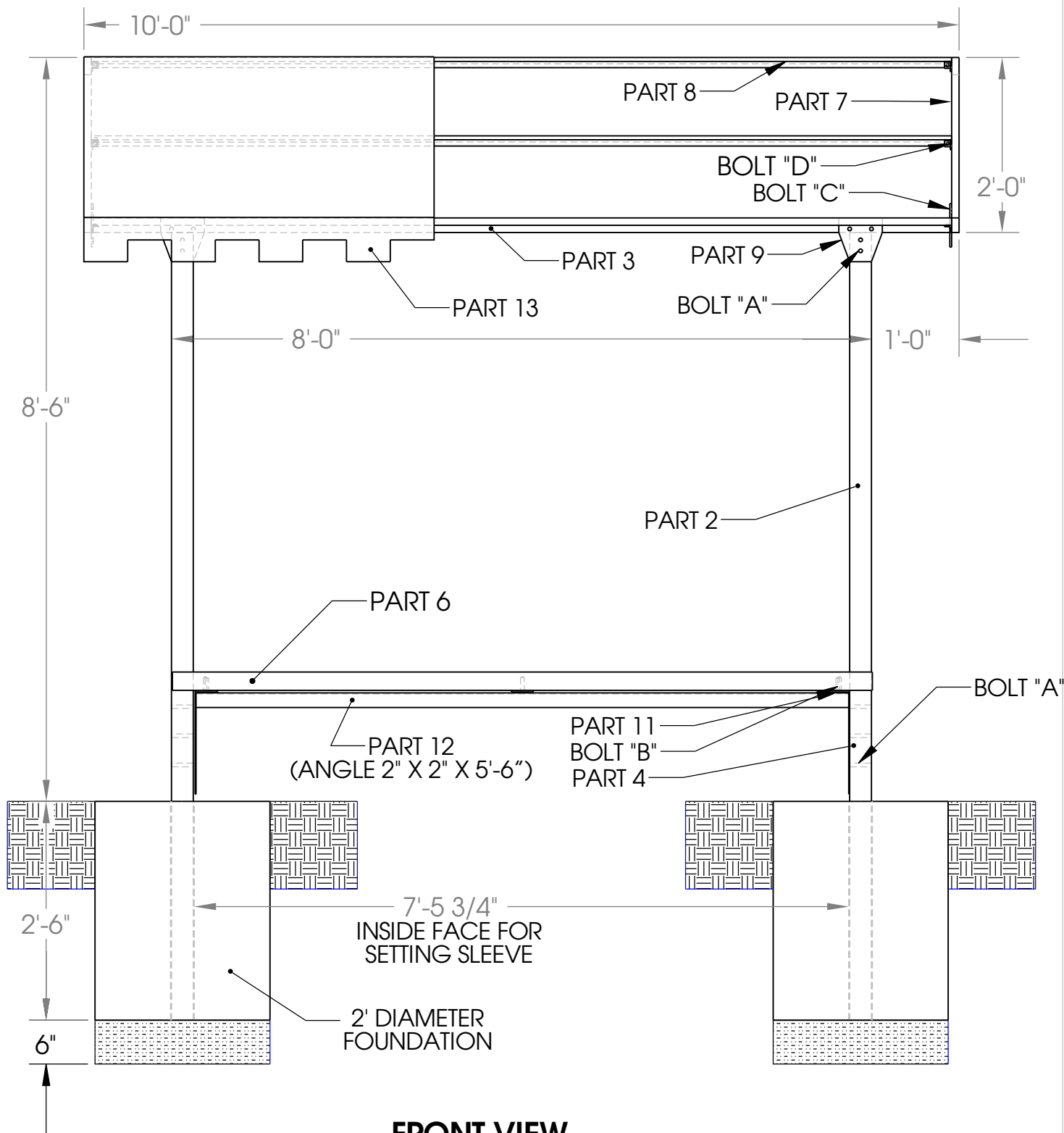
P.O. BOX 101057
DENVER, CO 80250
303-744-2647



SCALE 1:21

PAGE 1 OF 8

Cabana Bench 10' - Direct Burial



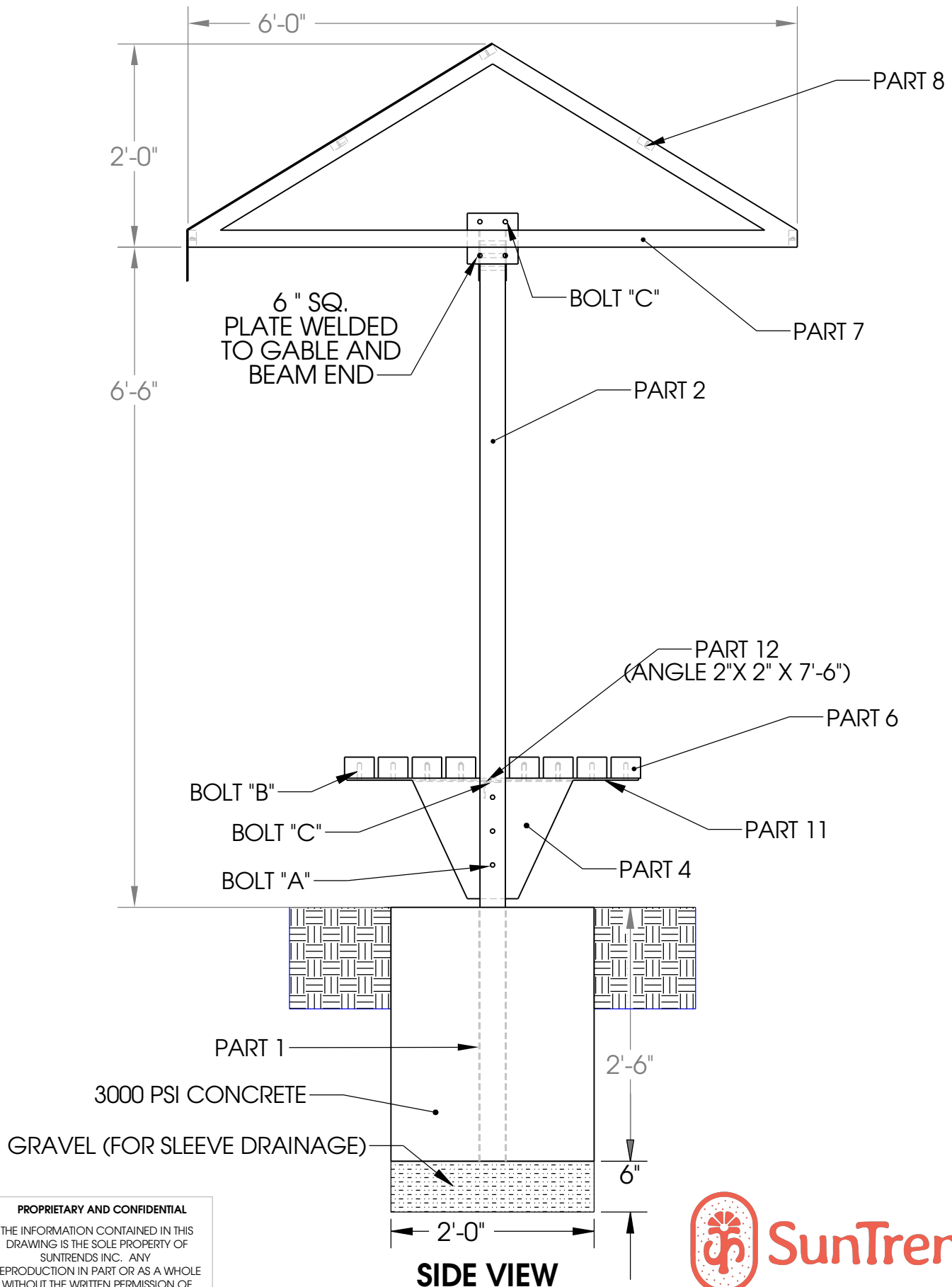
FRONT VIEW

PROPRIETARY AND CONFIDENTIAL
THE INFORMATION CONTAINED IN THIS
DRAWING IS THE SOLE PROPERTY OF
SUNTRENDS INC. ANY
REPRODUCTION IN PART OR AS A WHOLE
WITHOUT THE WRITTEN PERMISSION OF
SUNTRENDS INC. IS
PROHIBITED.

P.O. BOX 101057
DENVER, CO 80250
303-744-2647



Cabana Bench 10' - Direct Burial



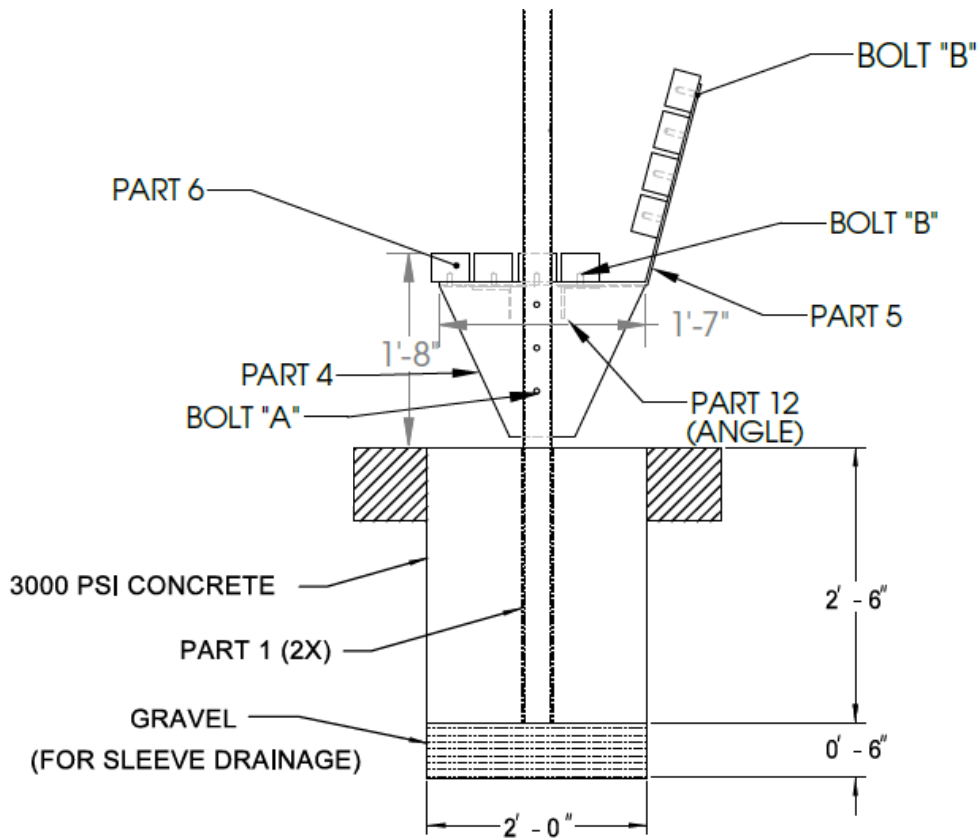
PROPRIETARY AND CONFIDENTIAL

THE INFORMATION CONTAINED IN THIS DRAWING IS THE SOLE PROPERTY OF SUNTRENDS INC. ANY REPRODUCTION IN PART OR AS A WHOLE WITHOUT THE WRITTEN PERMISSION OF SUNTRENDS INC. IS PROHIBITED.

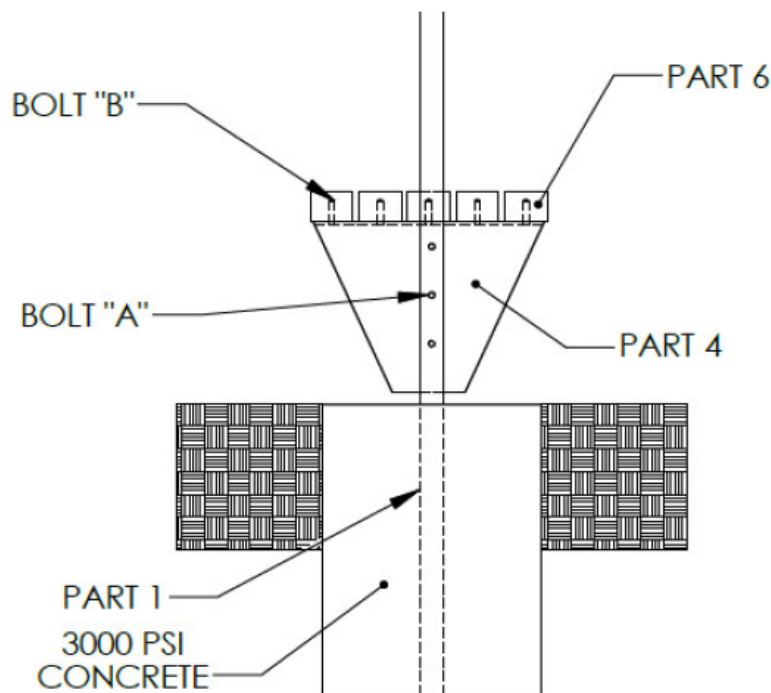


PART AND BOLT SCHEDULE - CABANA BENCH 10' DIRECT BURIAL

NUMBER	QUANTITY	DESCRIPTION
1	2	3 1/2" SQ. STEEL POST SLEEVE
2	2	3" SQ. STEEL TUBE COLUMN
3	1	2" X 3" STEEL TUBE BEAM
4	2	STEEL SEAT PLATE
6	8	3" X 4" NOMINAL DURAWOOD PLASTIC SLATS
7	2	GABLE END FRAME
8	5	1" SQ. STEEL TUBE PURLINS
9	4	6" X 6" COLUMN PLATE
11	3	BENCH STRAP (3" WIDE X 34" LONG)
12	1	2" X 2" ANGLE
13	1	FABRIC CANOPY
"A"	14	3/8" X 4" HEX HEAD BOLT W/ NUT & WASHER
"B"	24	3/8" X 2" HEX HEAD LAG SCREW W/ WASHER
"C"	11	3/8" X 1" HEX HEAD BOLT W/ NUT & WASHER
"D"	10	1/4" X 1.1/2" HEX HEAD BOLT W/ NUT & WASHER
"F"	4	1/2" X 3.1/2" EXPANSION BOLT (OPTION) NOT INCL.



BACKREST BENCH - OPTIONAL
(1/16 SCALE)



**FLAT BENCH -
OPTIONAL (1/12 SCALE)**

P.O. BOX 101057
DENVER, CO 80250
303-744-2647



PROPRIETARY AND CONFIDENTIAL
THE INFORMATION CONTAINED IN THIS
DRAWING IS THE SOLE PROPERTY OF
SUNTRENDS INC. ANY
REPRODUCTION IN PART OR AS A WHOLE
WITHOUT THE WRITTEN PERMISSION OF
SUNTRENDS INC. IS
PROHIBITED.

PART AND BOLT SCHEDULE - CABANA BENCH 10' DIRECT BURIAL w/ BACKREST

NUMBER	QUANTITY	DESCRIPTION
1	2	3 1/2" SQ. STEEL POST SLEEVE
2	2	3" SQ. STEEL TUBE COLUMN
3	1	2" X 3" STEEL TUBE BEAM
4	2	STEEL SEAT PLATE
5	3	BENT STEEL BENCH STRAP
6	8	3" X 4" NOMINAL DURAWOOD PLASTIC SLATS
7	2	GABLE END FRAME
8	5	1" SQ. STEEL TUBE PURLINS
9	4	6" X 6" COLUMN PLATE
12	2	2" X 2" ANGLE
13	1	FABRIC CANOPY
"A"	14	3/8" X 4" HEX HEAD BOLT W/ NUT & WASHER
"B"	24	3/8" X 2" HEX HEAD LAG SCREW W/ WASHER
"C"	8	3/8" X 1" HEX HEAD BOLT W/ NUT & WASHER
"D"	10	1/4" X 1 1/2" HEX HEAD BOLT W/ NUT & WASHER
"F"	4	1/2" X 3 1/2" EXPANSION BOLT (OPTION) NOT INCL.

Installation Guidelines

Cabana Bench 10'-Direct Burial



Step 1: Foundation Excavation

Excavate holes on level ground for foundation of 2'-0" diameter by 3'-0" deep. Holes spaced at 7'-9" to center of each hole. Place approximately 6" of gravel in holes to an elevation of 2'-6" deep. (Gravel used to support posts at desired elevation while concrete is being poured and to drain post sleeves.

Step 2: Posts and Beam

Slide 3"x3" sleeves (Part #1) on to posts (Part #2) and place beam (Part #3) on top of posts making sure bolt holes line up. Secure with bolts "A" and column plates (Part #9)

Step 3: Foundation Placement

Set posts and beam on top of gravel base. Check the elevation to ensure proper depth of posts. While plumbing posts vertically with a hand level, posts and beam need to be secured in place, using guy ropes or 2"x4" braces. Ropes need sufficient tautness to ensure stability while pouring concrete. Concrete may then be poured, taking care not to move posts. Re-check the plumb after pouring concrete.

NOTE: Concrete needs 24 hours of curing time, prior to erecting rest of bench.

Step 4: Seat Plates

Attach the (2) seat plates (Part #4) to the inside face of the 3"x3" posts (Part #2) with bolts "A".

Step 5: Angle Iron, Bench Straps and Durawood Slats

- **Two-Sided Flat:**
 - Attach (1) 2"x2" angle (Part #12) under seat plates (Part #4) with bolt "C" directly between the two vertical posts.
 - Sandwich (2) of the flat bench straps (Part #11) between seat plates (Part #4) and Durawood slats (Part #6) and secure with lag bolts "B".
 - Then slide the center flat bench strap (Part #11) between the 2"x 2" angle (Part #12) and attached with bolt "C" to the angle. Lastly, secure the flat bench strap to the Durawood slats with lag bolts "B".
- **Backrest:**
 - Sandwich (2) bent bench straps (Part #5) between seat plates (Part #4) and Durawood slats (Part #6).
 - Place (2) 2"x2" angles (Part #12) on each side of the posts. Set below seat plates and secure with lag bolts "B" by fastening through angle, seat plate, bent bench strap and Durawood slat (in that order).
 - The middle bent bench strap (Part #5) to be placed on top of angle (Part #12), and secured to center of Durawood slats with lag bolts "B" by fastening through angle, bent bench strap and Durawood slat (in that order).
 - Secure the remaining slats to seat plate and/or bent bench strap with lag bolt "B".
- **Single Flat Bench:**
 - Begin by securing the (1) 2"x2" Angle Iron (Part #12) below the seat plates with lag bolts "B" by fastening through angle, seat plate, and the (1) 'short' Durawood slat (Part #6), in that order directly between the two vertical posts.
 - Then Sandwich the (1) 20" flat bench strap (5 holes) directly in the middle, on top of the 2"x2" Angle Iron but under the Durawood slat.
 - Secure the remaining (4) Durawood slats (Part #6) with lag bolts "B" to their appropriate holes on the seat plates and the middle 20" flat bench strap.

Step 6: Gable Ends

Secure modified gable ends (Part #7) to each end of beam (Part #3) with bolts "C".

NOTE: 6"x6" plates to meet at beam end and center of gable end.

Step 7: Perlins

Attach (5) perlins (Part #8) to gable ends with bolts "D".

Step 8: Fabric Canopy

- Unfold canvas (Part #13) and drape it over the canopy frame. (The grommeted laces are on the inside of the cover).
- Pull the cover down over the corners making sure the canvas is square with the frame and wrinkles are pulled taut.
- Starting at the center of the short sides (where the beam and gable meet) lace the rope through the grommets, working toward the other end. Pull the cover and rope tight as you work toward the other end. Tie off loose ends.

Step 9: Miscellaneous

Use can of black spray (semi gloss) paint to touch up scratches from shipping or erection.