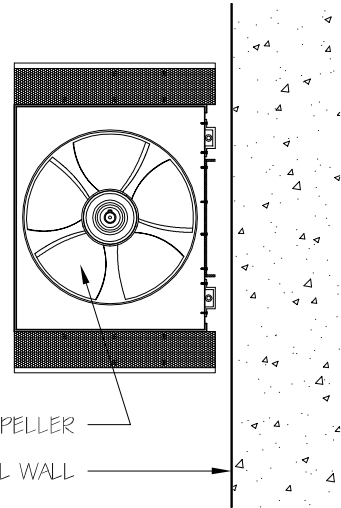
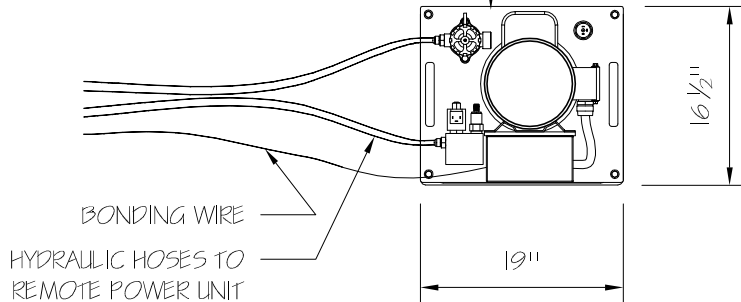
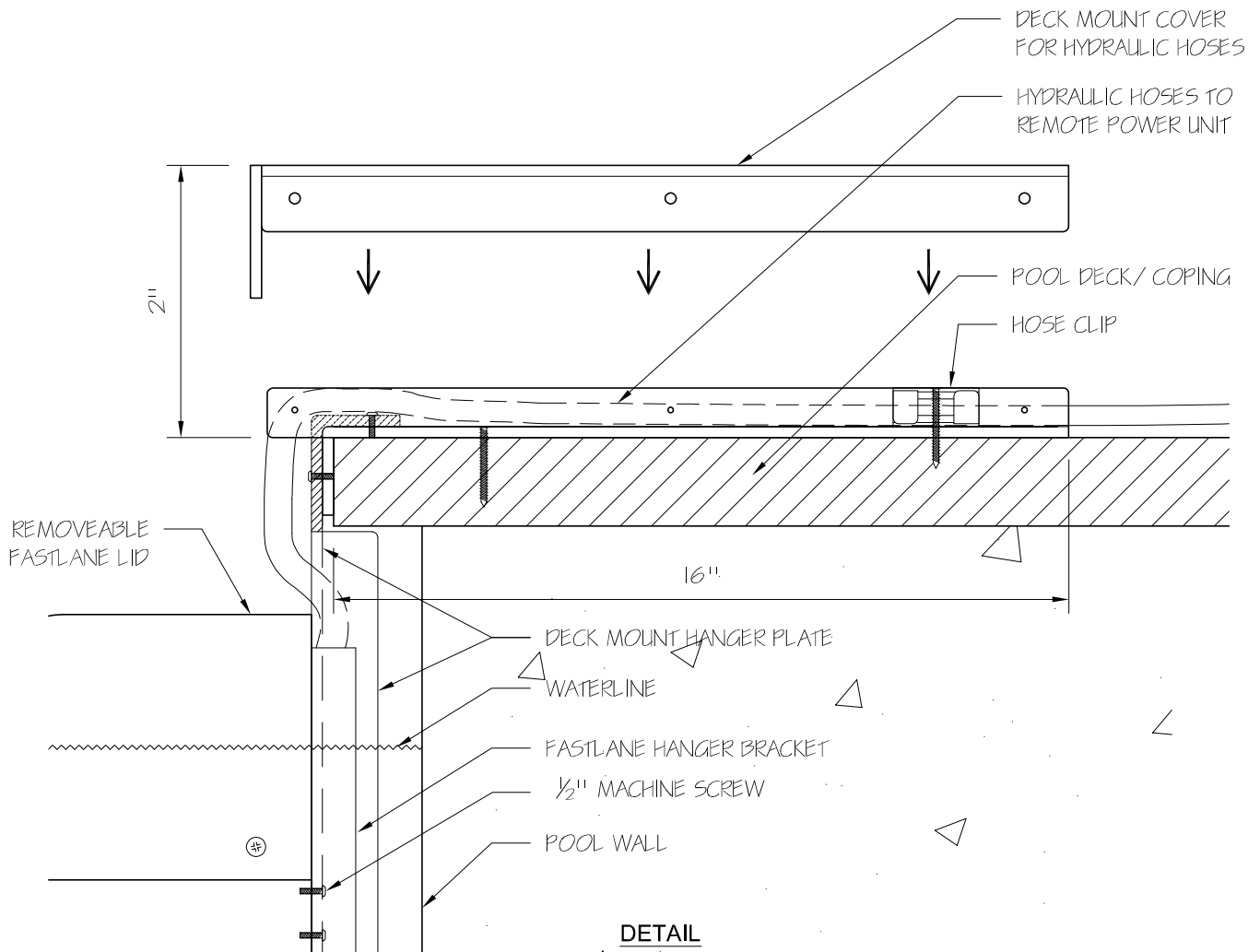


REMOTE POWER UNIT IN
SHELTERED LOCATION,
5 HP, 220V, 30 AMP GFCI
SERVICE REQUIRED



SECTION A-A
(REFER TO FL-A1.1)



ENDLESS POOLS®
SWIMMING MACHINES
1601 Dutton Mill Road, Aston PA 19014
www.endlesspools.com
swim@endlesspools.com 800-732-8660

DECK MOUNT FASTLANE
ANCHORED TO POOL DECK
HYDRAULIC LINES ACROSS POOL DECK

DETAIL NUMBER:

FL-A1.2