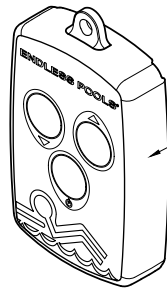


NOTES:

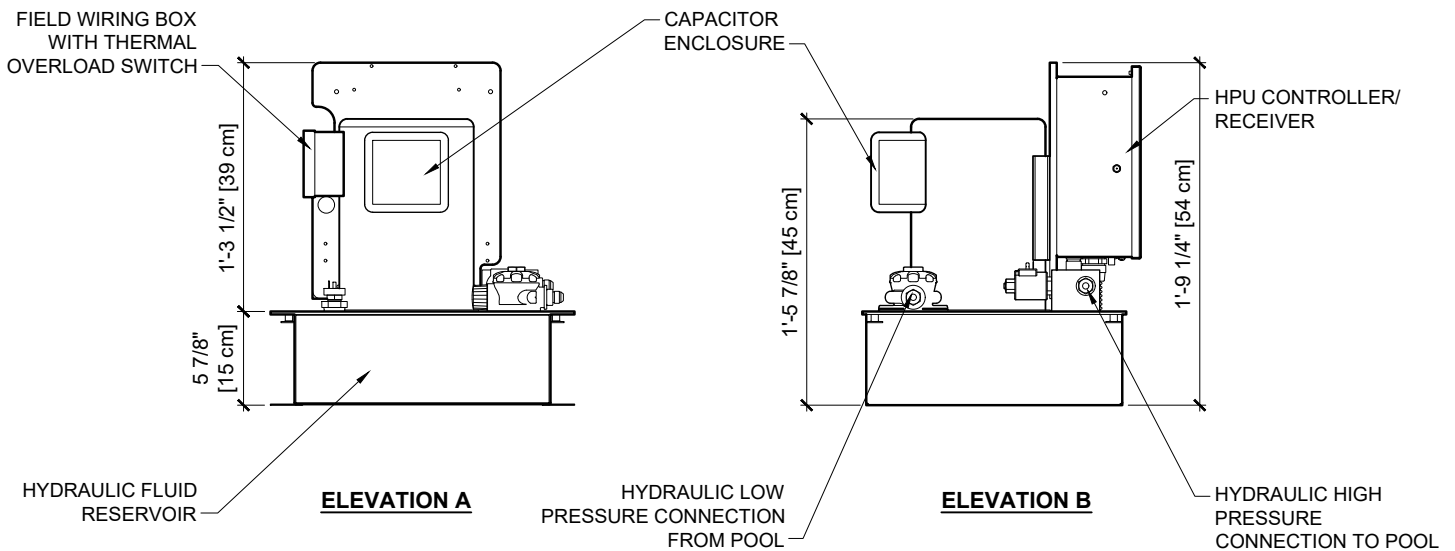
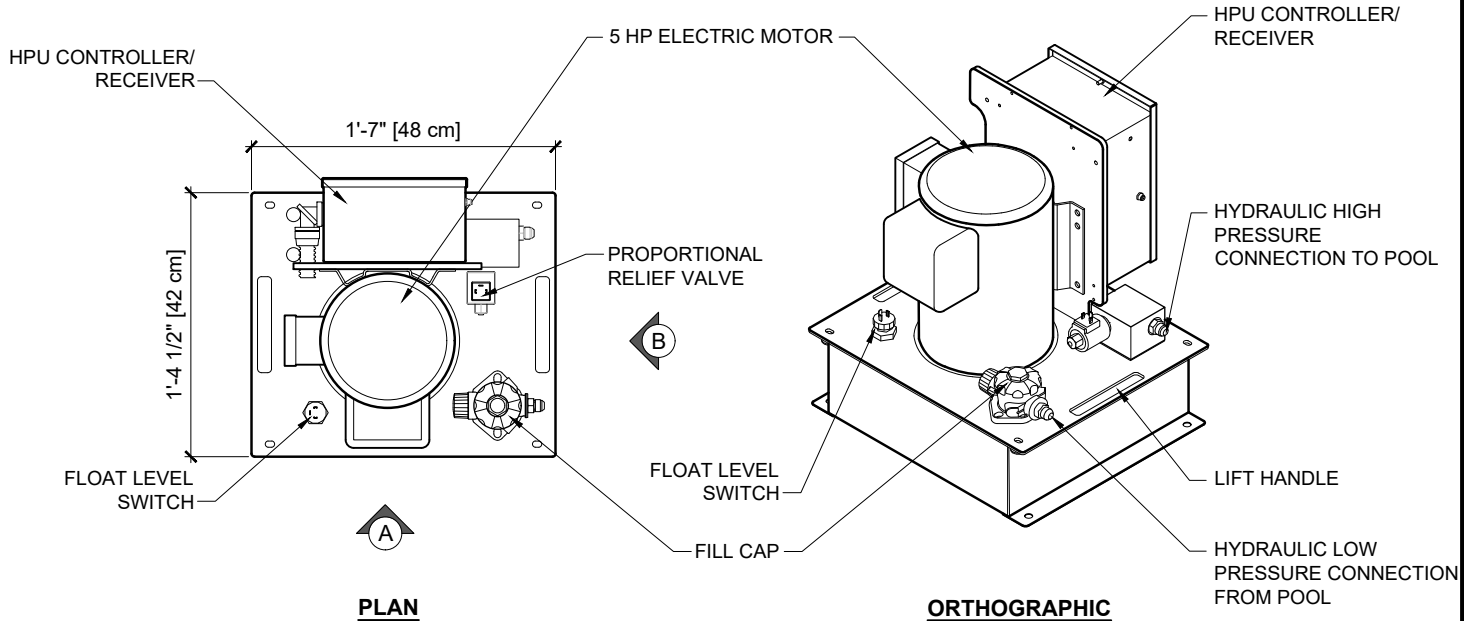
ALL ELECTRICAL COMPONENTS MUST BE LOCATED, INSTALLED & BONDED BY A LICENSED LOCAL ELECTRICIAN IN ACCORDANCE WITH APPLICABLE CODES

IF LOCATING THE POWER UNIT IN AN ENCLOSED SPACE, CLEARANCE FOR VENTILATION & ACCESS MUST BE MAINTAINED TO PREVENT OVERHEATING

ALL CIRCUITS MUST BE GFCI (RCD) PROTECTED



REMOTE CONTROL TRANSMITTER



5.0 hp HYDRAULIC POWER UNIT
for the ORIGINAL & PERFORMANCE ENDLESS POOLS
and THE FASTLANE

POOL EQUIPMENT DETAILS

DETAIL NUMBER:

EP-7.1.0

REV: 2019/12/13