

ZACRO
User Manual
Zacro K6 Electric Bicycle



Thank you for purchasing the Zacro E-bike. We take pride in bringing you a quality product that will offer years of enjoyment. Please read and understand this manual fully before assembling and riding your bike. If you have questions after reading this manual, please refer to the Zacro Support Help Center, contact us by email, and/or give us a phone call.

MAYERLESCAPE LIMITED
 www.zacro-tech.com
 UNIT# 2052 275 NEW NORTH ROLONDON UNITED KINGDOM N1 7AA

We are here to help!
 Zacro Help Center: <https://www.zacro-tech.com/blogs/manuals-2>

Contact Us
 Contact us if you experience issues relating to riding, maintenance and safety, or errors/fauls with your Zacro.

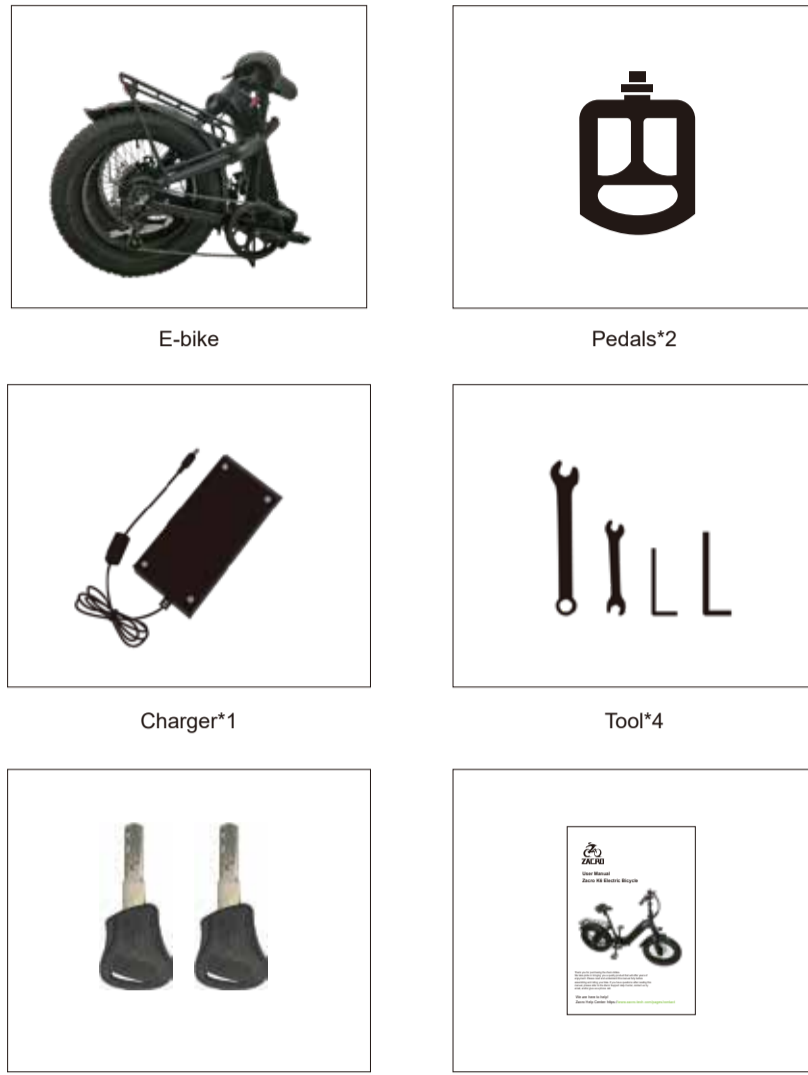
Product Safety Notice

- I Always wear a helmet when riding your electric bike.
- I Keep the two keys properly. If the unique keys are lost, you will not be able to turn on the bike or replace the battery. If necessary, you should get more spare keys (We don't have a backup key).
- I Make sure your electric bike is fully charged before taking it out to ride.
- I Always be aware of local road rules, and follow them.
- I Do not ride the bike under the influence of drugs or alcohol.
- I Always respect pedestrians.
- I Do not ride under wet conditions. The electric bike may slide from under your feet causing injury. Wet conditions may damage the electronics and void the warranty.

Warning Message

- Water Resistant** - The electric bike is not waterproof. The electronics may be damaged due to water and water damage is not covered by our warranty. Riding in wet conditions is also very dangerous and may result in injury.
- Avoid prolonged exposure** to sun or rain and avoid riding in places with high temperatures or corrosive gas.
- Abuse** - We do not cover physical damage due to negligent care and extreme riding. Whenever you ride the Zacro Electric Bike, you risk severe injury or even death from loss of control, collisions, and falls. Use caution and ride at your own risk.
- Do not modify** the product from manufacturer's original design.
- Do not exceed** the posted speed limit and obey all traffic laws.
- Avoid touching** the charging port directly and do not let it make contact with a metal object.
- Keep hands and all body parts away** from moving parts while operating the electric bike.
- Before riding** - be sure to check the electric bike over and make sure the electric bike is operating correctly before each use.
- Before riding** - be sure to check that the braking system is functioning properly, also be sure to check that all safety labels are in place and you understand the safety warnings.
- Before riding** - be sure that any and all side guards, chain guards, or other covers or guards supplied by the manufacturer are in place and in serviceable condition.
- Before riding** - be sure to check that the tires are in good condition, inflated properly, and have sufficient tread remaining.
- Never exceed the 254 lbs (120 kg) maximum load rating.**
- The electric bike should never be used** by children under the age of 18.
- Maximum Speed** - Your electric bike goes at a maximum speed of 20 mph. Make note that additional insurance may be required to operate situations you encounter while riding an electric bike. It is recommended that you contact an insurance company or broker for advice and consultation.
- To conserve electricity**, use assist mode, and avoid zero starting, frequent braking, driving against the wind, carrying heavy loads including other people and riding with insufficient air pressure.

Package Contents



Carefully check package contents. If anything is missing or damaged, please contact Zacro Support. Unpack the bike. Open the bike box and remove the small box inside. With the help of another person capable of safely lifting a heavy object, remove the bike from the bike box. Carefully remove the packaging material protecting the bike frame and components. Please repackage packaging materials especially cardboard and foam whenever possible. Open the small box and carefully set out all contents.

Product Overview



Assembly

