

# Model S2260-RA

Barrier Free Combination Station, Recessed Activation, Eye/Face Wash, Horizontally Mounted Emergency Shower, Stainless Steel Showerhead



## SPECIFICATIONS:

Model S2260-RA is a barrier free, recessed activated, eye/face wash with ABS plastic eye/face wash spray heads and a horizontally mounted emergency shower with a stainless steel showerhead. Eye/face wash swings down over the floor from the recessed cabinet and the water flow is activated automatically. The eye/face wash flow is terminated once the unit has been swung back up into its original position for storage.



Note: When installed appropriate height, unit may comply with some but not all requirements for ADA.

## STANDARD EQUIPMENT:

**Showerhead:** Stainless steel, 8-1/8" diameter showerhead with a 20 gpm flow regulator.

**Shower Valve:** 1" rough chrome plated brass stay-open ball valve installed inside a wall mounted, fully recessed stainless steel enclosure with a vandal resistant access panel and an actuator that remains fully recessed, even when the unit is activated.

**Shower Water Supply:** 1" NPT female threaded brass inlet.

**Spray Head Assembly:** ABS yellow plastic Eye/Face Wash heads supplied by a combined integral 3.7 GPM (14 LPM) Flow Control, with integral flip Dust Covers, internal Flow Controls and Filters to remove debris from the water. An anti-microbial agent is molded into the ABS material, providing integrated protection.

**Eye/Face Wash Valve:** Swing down valve has a 316 stainless steel valve housing and is mounted inside the recessed, wall mounted enclosure and has a 50 mesh inline strainer.

**Eye/Face Wash Water Supply:** 1/2" NPT female threaded brass inlet.

**Piping:** Schedule 40, 1" galvanized steel pipe, yellow powder coated finish.

**Universal Sign:** ANSI compliant, vertical identification sign.

**Weekly Test Tag:** A waterproof test card to record the date and inspector's name for weekly functional testing of the unit.

**Optional -PAN Drain Pan** includes 2" waste requiring plumbed waste connection.

Model: S2260-RA



## OPTIONAL ACCESSORIES:

Additional costs may be incurred

- AL3 Electric Alarm For Recessed Laboratory Applications
- AS All Stainless Steel
- ET71-2-BVS-OTG Thermostatic Mixing Valve Is ASSE Listed Per The ASSE 1071 Standard. The Taped Output Water Complies With ANSI Z358.1 Standard. Valve Includes Ball Valve Shut-offs, Outlet Temperature Gauge
- FLW1 Flow Switch, Single Pole
- FOP Front Outlet Port (Optional -PAN Required)
- FXC Fire Extinguish Cabinet (Shipped Loose) <sup>1</sup>
- MC3 Modesty Curtain For Wall Showers
- MS1 MAP (Magnetically Actuated Proximity) Switch, For One (1) Actuator
- MS2 MAP (Magnetically Actuated Proximity) Switches, For Two (2) Actuators
- PAN Waste Water Drain Pan (Eye/Face Wash Only)
- SV1 Stainless Steel 1" Ball Valve

### NOTES:

1 - Refer to Supplemental Submittal Sheet for Details.



Acorn Safety® assumes no responsibility for use of void or superseded data. © Copyright Acorn Safety®, City of Industry, CA, Division of Acorn Engineering Company®, Member of Morris Group International®. Please visit [www.safetymfg.com](http://www.safetymfg.com) for most current specifications.

Submittal # **S2260-RA**  
[CMB] Revised: 06/19/2024

Product carries the following certifications:



Test rating conditions are compliant to ANSI Z358.1



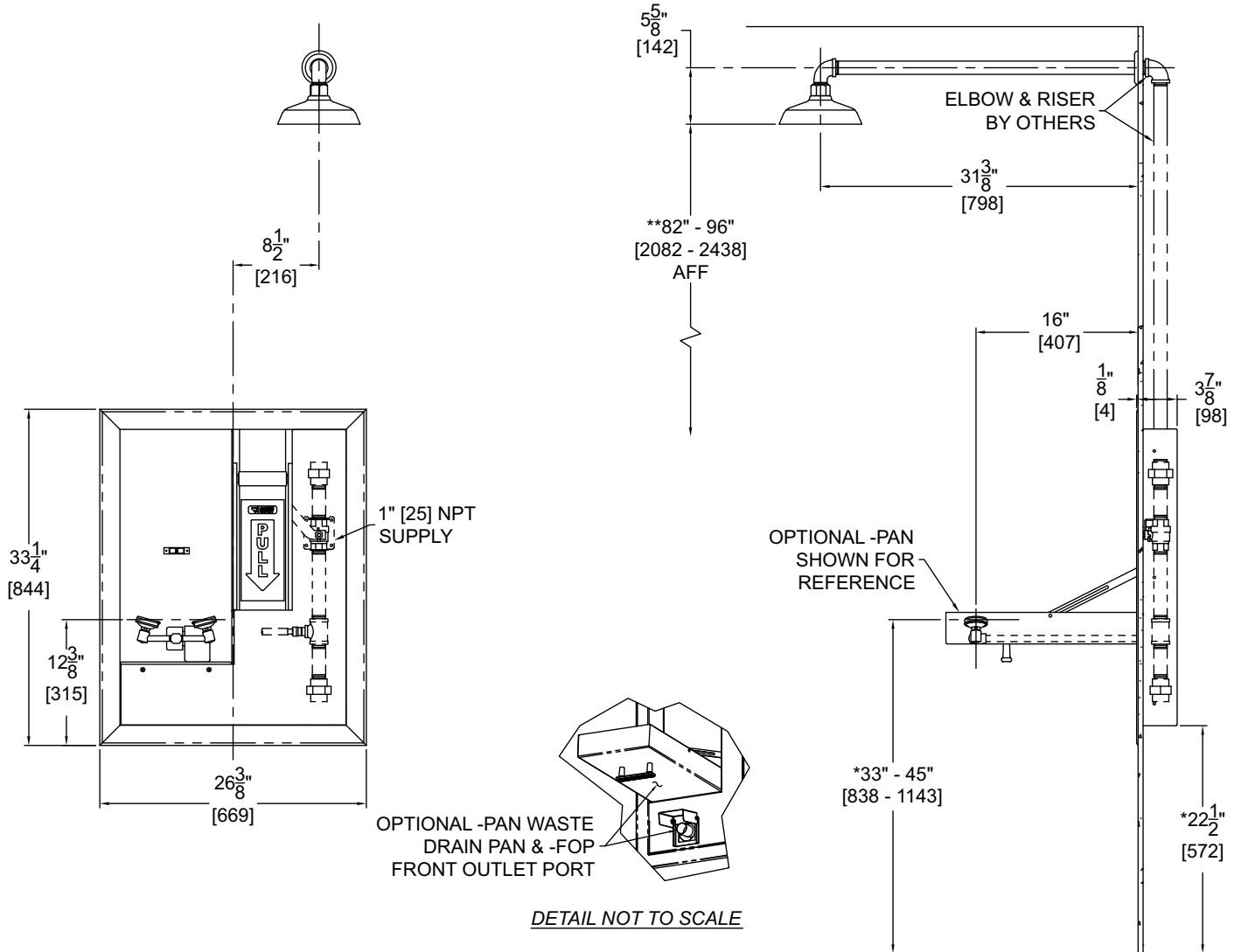
Division of  
Acorn Engineering Company®,  
Member of  
Morris Group International®

**ACORN SAFETY**  
P.O. Box 3527  
City of Industry, CA  
91744 U.S.A.  
Phone 800-591-9372  
626-855-4804  
[www.safetymfg.com](http://www.safetymfg.com)

# TECHNICAL DIMENSIONS

All dimensions are subject to manufacturer's tolerance of plus or minus 1/2" nominal and subject to change without notice. Acorn Safety® assumes no responsibility for use of void or superseded data. Dimensions may change with the addition of optional accessories. Acorn Safety®, A Division of Acorn Engineering Company®, Member of Morris Group International®. Please visit [www.safetymfg.com](http://www.safetymfg.com) for most current specifications.

**Model S2260-RA (Shown) :** Barrier Free Combination Station, Recessed Activation, Eye/Face Wash, Horizontally Mounted Emergency Shower, Stainless Steel Showerhead



**GENERAL NOTES:**

1. ALL DIMENSIONS ARE INCHES [MM].
- \*2. ANSI Z358.1 REQUIRES NOZZLES TO BE MOUNTED BETWEEN 33" - 45" [838 - 1143] ABOVE THE FINISHED FLOOR.
- \*3. ANSI Z358.1 REQUIRES SHOWER HEAD TO BE MOUNTED BETWEEN 82" - 96" [2083 - 2438] ABOVE THE FINISHED FLOOR.
4. SHOWN WITH OPTIONAL -PAN.

**⚠ WARNING:** Cancer and Reproductive Harm - [www.P65Warnings.ca.gov](http://www.P65Warnings.ca.gov)

**S2260-RA** Revised: 06/14/2024

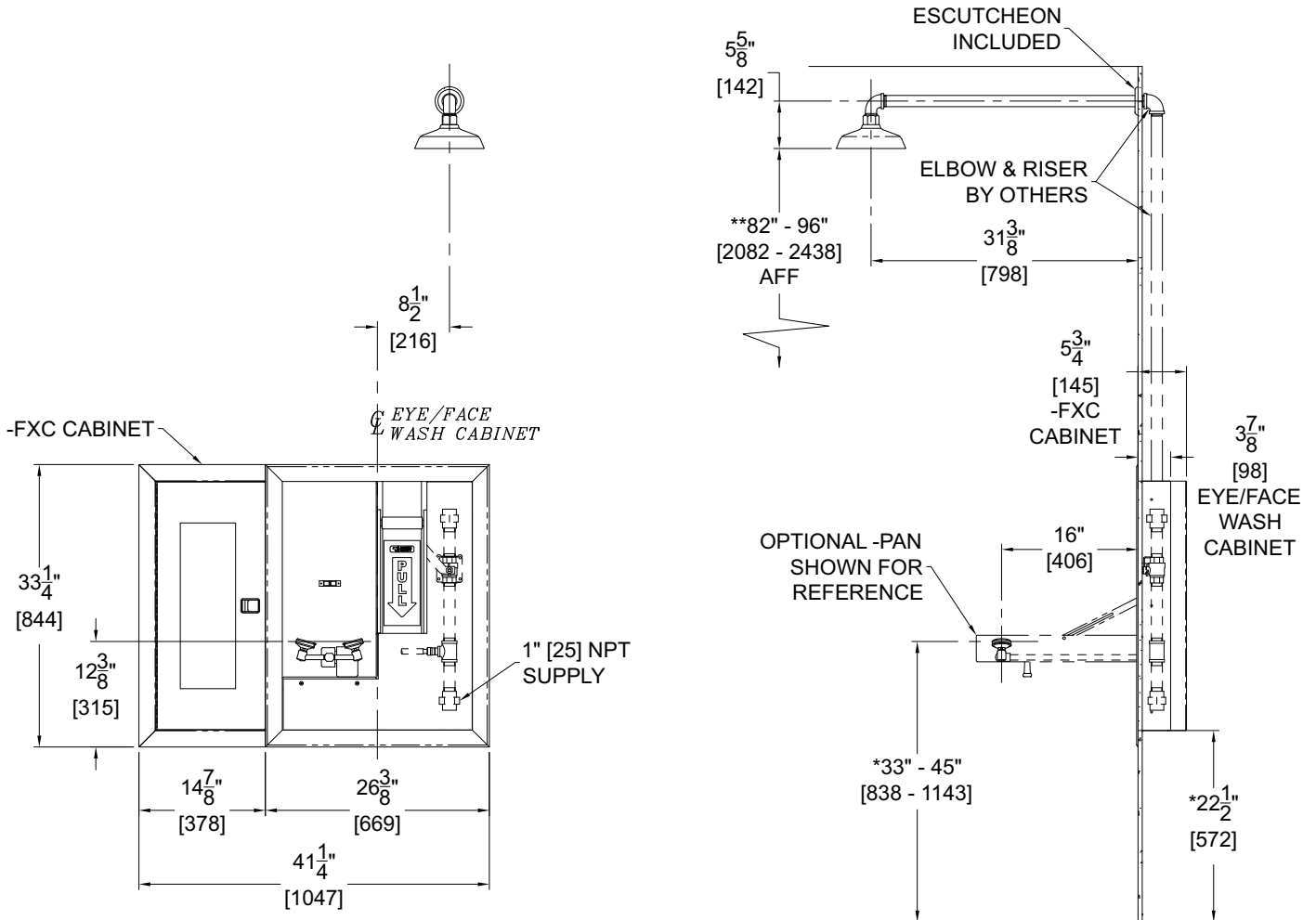
<b>SELECTION SUMMARY &amp; APPROVAL FOR MANUFACTURING</b>	Model Number & Options _____	Quantity _____
	Company _____	
	Contact _____	Title _____
	Signature (Approval for Manufacturing) _____	Date _____

**800-591-9372**  
or 626-855-4804  
[www.safetymfg.com](http://www.safetymfg.com)

# TECHNICAL DIMENSIONS

All dimensions are subject to manufacturer's tolerance of plus or minus 1/2" nominal and subject to change without notice. Acorn Safety® assumes no responsibility for use of void or superseded data. Dimensions may change with the addition of optional accessories. Acorn Safety®, A Division of Acorn Engineering Company®, Member of Morris Group International®. Please visit [www.safetymfg.com](http://www.safetymfg.com) for most current specifications.

**Model S2260-RA-FXC (Shown) : Barrier Free Combination Station, Recessed Activation, Eye/Face Wash, Horizontally Mounted Emergency Shower, Stainless Steel Showerhead With Fire Extinguisher Cabinet**



**GENERAL NOTES:**

1. ALL DIMENSIONS ARE INCHES [MM].
- \*2. ANSI Z358.1 REQUIRES NOZZLES TO BE MOUNTED BETWEEN 33" - 45" [838 - 1143] ABOVE THE FINISHED FLOOR.
- \*\*3. ANSI Z358.1 REQUIRES SHOWER HEAD TO BE MOUNTED BETWEEN 82" - 96" [2083 - 2438] ABOVE THE FINISHED FLOOR.
4. SHOWN WITH OPTIONAL -PAN.

Acorn Safety® assumes no responsibility for use of void or superseded data. © Copyright Acorn Safety®, City of Industry, CA, Division of Acorn Engineering Company®, Member of Morris Group International®. Please visit [www.safetymfg.com](http://www.safetymfg.com) for most current specifications.

Submittal # **S2260-RA**  
[CMB] Revised: 06/14/2024

Product carries the following certifications:



Test rating conditions are compliant to ANSI Z358.1



Division of  
Acorn Engineering Company®,  
Member of  
Morris Group International®

**ACORN SAFETY**

P.O. Box 3527  
City of Industry, CA  
91744 U.S.A.  
Phone 800-591-9372  
626-855-4804

[www.safetymfg.com](http://www.safetymfg.com)