

# Model S0000-FLW2

Flow Switch, 1/2" NPTI



## SPECIFICATIONS:

Model S0000-FLW2 is a 1/2" NPTI DPDT double pole, double throw flow switch which allow for remote monitoring (by others) and audio/visual alarms (by others).

Switch is installed in the water supply line prior to the emergency equipment and is activated once it senses the movement of water in the supply line.

## STANDARD EQUIPMENT:

**Flow Switch and Enclosure:** 1/2" NPTI, DPDT Double Pole Double Throw, 125 volt, 5 amp flow switch. Flow Switch assembly is Explosion Proof and Weatherproof, Listed with UL & CSA, for the following:

Class I                Groups B, C, D

Class II              Groups E, F, G

**Mounting:** The switch is provided with a tee fitting for mounting the unit in the vertical position prior to the supply inlet of the emergency equipment.

Model: S0000-FLW2



## OPTIONAL ACCESSORIES:

Additional costs may be incurred



Member of  
U.S. Green  
Building Council



Recyclable  
Product

Acorn Safety assumes no responsibility for use of void or superseded data. © Copyright Acorn Safety®, City of Industry, CA, Division of Acorn Engineering Company®, Member of Morris Group International™. Please visit [www.acorneng.com](http://www.acorneng.com) for most current specifications.

Submittal # **S0000-FLW2**  
[ACC] Date: 08/30/17

Product complies to the following standards:

Test rating conditions are compliant to ANSI Z358.1



Division of  
Acorn Engineering Company®,  
Member of  
Morris Group International™

**ACORN SAFETY**

P.O. Box 3527  
City of Industry, CA  
91744 U.S.A.

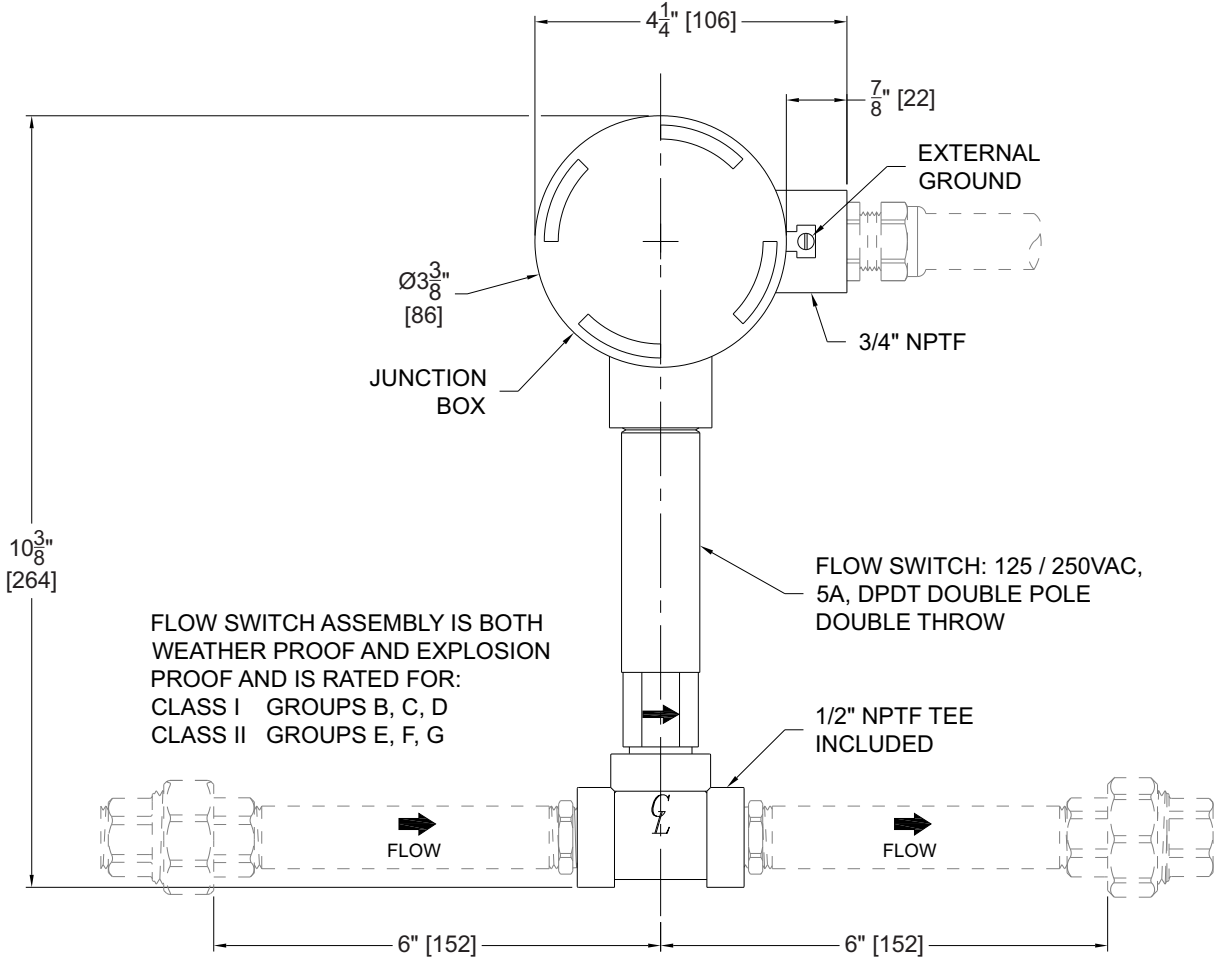
Phone 800-591-9372  
626-855-4804

[www.acorneng.com](http://www.acorneng.com)

# TECHNICAL DIMENSIONS

All dimensions are subject to manufacturer's tolerance of plus or minus 1/2" nominal and subject to change without notice. Acorn Safety® assumes no responsibility for use of void or superseded data. Dimensions may change with the addition of optional accessories. © Acorn Safety®, A Division of Acorn Engineering Company®, Member of Morris Group International™. Please visit [www.acorneng.com](http://www.acorneng.com) for most current specifications.

☐ Model S0000-FLW2 : Flow Switch, 1/2" IPS



FLOW SWITCH ASSEMBLY IS BOTH WEATHER PROOF AND EXPLOSION PROOF AND IS RATED FOR:  
 CLASS I GROUPS B, C, D  
 CLASS II GROUPS E, F, G

**NOTES:**

1. ALL DIMENSIONS ARE IN INCHES [MM].
2. OPERATING VOLTAGE: 125 / 250 VAC.
3. FLOW SWITCH MUST BE INSTALLED VERTICALLY WITH HORIZONTAL FLOW.
4. DIRECTION OF FLOW MUST BE IN SAME DIRECTION AS SHOWN ON FLOW SWITCH.

**⚠ WARNING:** Cancer and Reproductive Harm - [www.P65Warnings.ca.gov](http://www.P65Warnings.ca.gov)

**S0000-FLW2** Date: 08/30/17

*Acorn Safety warrants that its products are free from defects in material or workmanship under normal use and service for a period of one year from date of shipment. Acorn's liability under this warranty shall be discharged solely by replacement or repair of defective material, provided Acorn is notified in writing within one year from date of shipment, F.O.B. Industry, California.*

**SELECTION SUMMARY & APPROVAL FOR MANUFACTURING**

Model Number & Options \_\_\_\_\_ Quantity \_\_\_\_\_

Company \_\_\_\_\_

Contact \_\_\_\_\_ Title \_\_\_\_\_

Signature (Approval for Manufacturing) \_\_\_\_\_ Date \_\_\_\_\_



**800-591-9372**  
 or 626-855-4804  
[www.acorneng.com](http://www.acorneng.com)