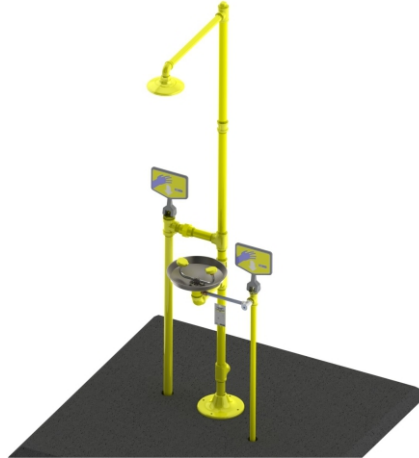




ACORN SAFETY
P.O. BOX 3527
CITY OF INDUSTRY, CA 91744-0527
UNITED STATES OF AMERICA
WWW.ACORNSAFETY.COM

INSTALLATION, OPERATION AND MAINTENANCE INSTRUCTIONS

COMBINATION STATIONS



MODELS S1330-FPB/S1340-FPB/S2330-FPB/S2340-FPB/2330-FPB-ASP

TECHNICAL ASSISTANCE TOLL FREE TELEPHONE NUMBER

1.800.591.9360

TECHNICAL ASSISTANCE FAX: 1.626.855.4894

NOTES TO THE INSTALLER:

- 1. Please leave this documentation with the owner of the fixture when finished.**
- 2. Please read this entire booklet before beginning the installation.**
- 3. Check your installation for compliance with plumbing, electrical, ANSI Z358.1 and other applicable codes.**

LIMITED WARRANTY UNITED STATES AND CANADA

Acorn Safety warrants that its products are free from defects in material or workmanship under normal use and service for a period of one year from date of shipment. Acorn's liability under this warranty shall be discharged solely by replacement or repair of defective material, provided Acorn is notified in writing within one year from date of shipment, F.O.B. Industry, California.

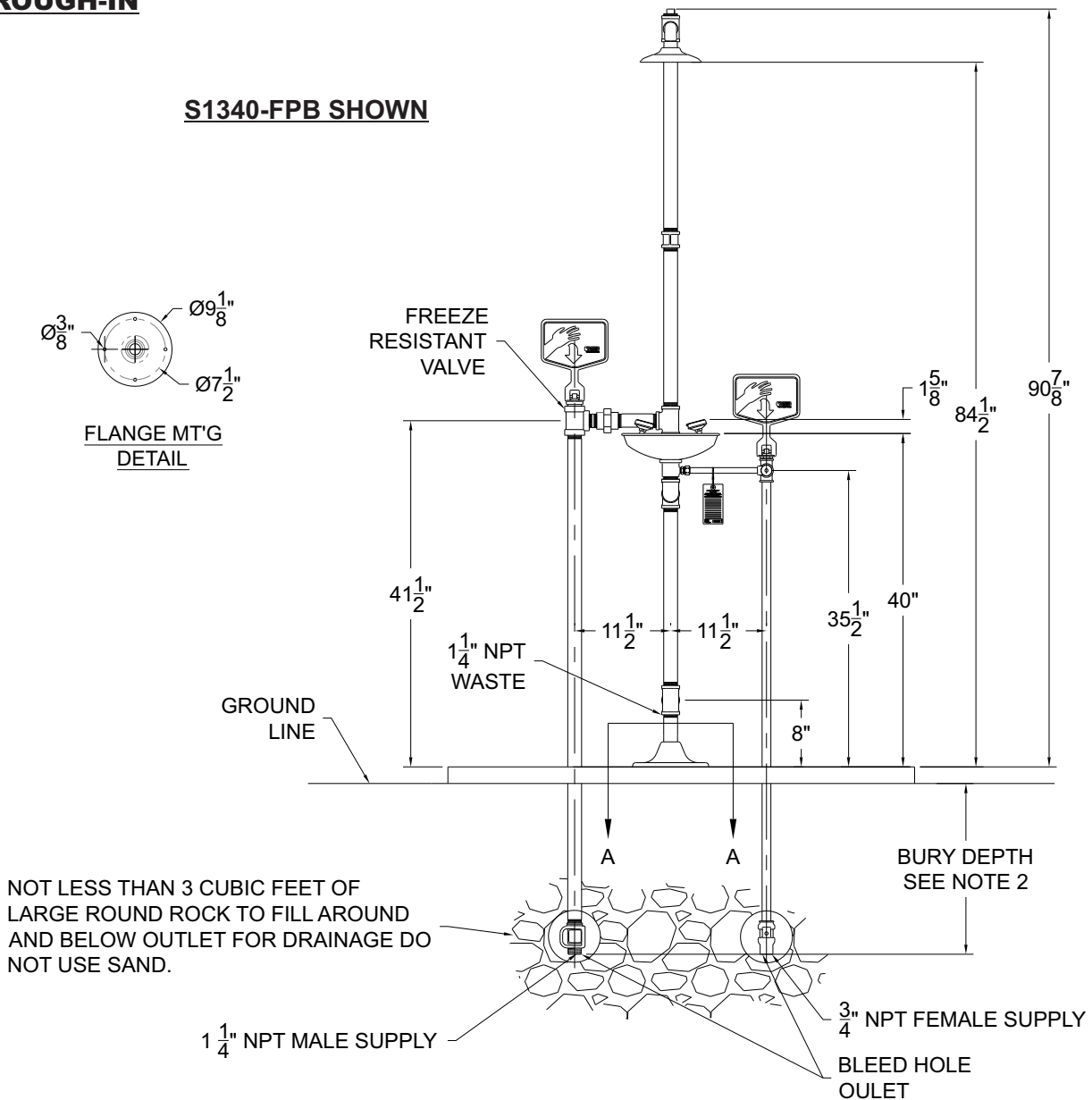
This warranty does not cover installation or labor charges and does not apply to materials, which have been damaged by other causes such as mishandling or improper care or abnormal use. The repair or replacement of the defective materials shall constitute the sole remedy of the Buyer and the sole remedy of Acorn under this warranty. Acorn shall not be liable under any circumstances for incidental, consequential or direct charges caused by defects in materials, or any delay in the repair or replacement thereof. This warranty is in lieu of all other warranties expressed or implied. Product maintenance instructions are issued with each unit and disregard or non-compliance with these instructions will constitute an abnormal use condition and void the warranty. Stainless steel must be protected on jobsites during construction and must be properly maintained after the water has been introduced into the safety product or Acorn's warranty is void.

PRELIMINARY STEPS

1. Read the installation instructions prior to beginning the installation.
2. Separate parts from packaging and verify all necessary parts are accounted for and undamaged. Obtain missing or damaged parts from Acorn Safety prior to beginning installation.
3. Flush water supply lines prior to installation. This will remove unwanted debris from the lines and prevent unwanted blockages in the safety equipment.
4. In order to comply with ANSI Z358.1, the safety equipment must be inspected periodically. An inspection tag is provided for documentation purposes.
5. all employees at risk of contamination should be informed and trained in the use of this and any other safety equipment. The signage provided should be posted appropriately in close proximity to this equipment.

ROUGH-IN

S1340-FPB SHOWN



GENERAL NOTES:

1. ALL DIMENSIONS ARE IN INCHES.
2. STANDARDS DEPTHS ARE 24, 36 AND 46 INCHES. OTHERS AVAILABLE UPON REQUEST.

INSTALLATION INSTRUCTIONS:

Supplies required: (not provided by Acorn)

1. Floor fastener anchors, washers and bolts.
2. Pipe Sealant or Teflon tape for sealing water connections.

IMPORTANT: FLUSH WATER SUPPLY LINES PRIOR TO CONNECTION TO SAFETY EQUIPMENT.

Notes:

Top of spray nozzles must be between 33"- 45" from finished floor in order to meet ANSI Z358.1
 Bottom of shower head must be between 82"-96" from finished floor in order to meet ANSI Z358.1
 Use hand tools and wrenches in a manner which will prevent marring finished surfaces. Strap wrenches or tools with plastic jaw linings are highly recommended.
 Refer to Rough-in for location of supply and drain lines.
 Fragments of Teflon tape or pipe sealant residue can interfere with the proper operation of this unit. Ensure pipe sealant methods do not cause contamination in the system.
 Prior to beginning assembly, TURN OFF water supply to 1 ?" potable water supply line.

Step One: HYDRANT LOCATION AND SUPPLY CONNECTION

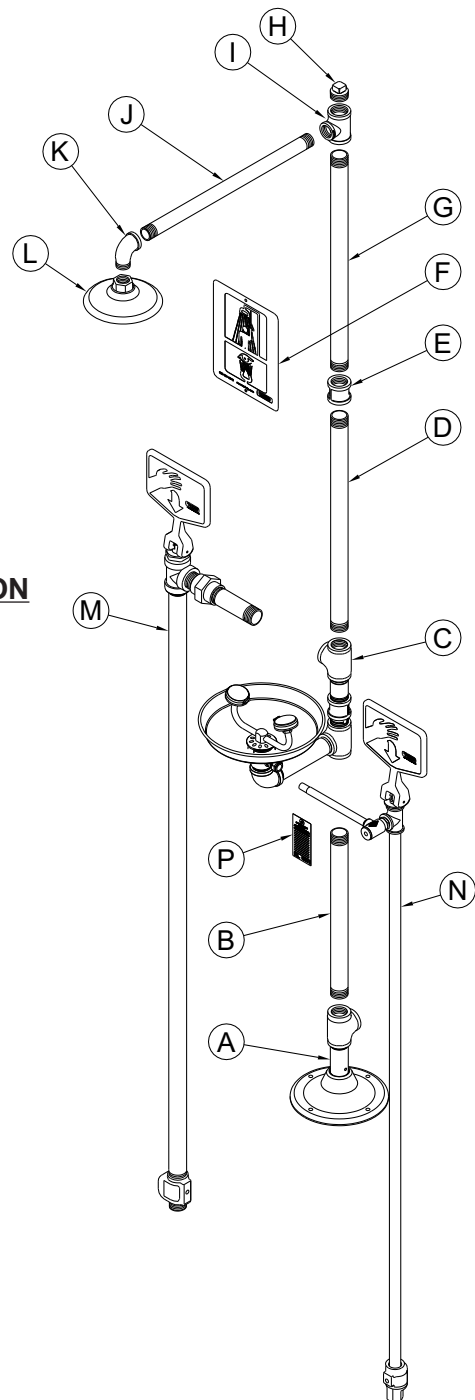
1. Determine location of shower/eyewash equipment and ensure to position equipment so that there is a minimum of 12" from any wall or equipment around assembled unit.
2. Dig a pit wide enough to accommodate a spacing of 23" between hydrant centers. Determine frost line and dig pit deep enough to accommodate a minimum of 5 cubic feet of porous gravel fill.
3. Test hydrants for functionality before permanent placement. Place hydrants in proper location per rough in drawing above. Hydrant valve body shall be buried within the gravel fill to insure proper drainage from weep hole (see diagram B). Connect customer supply lines to hydrants and fill pit with 5 Cu. Ft. of porous gravel.
4. Back fill pit and create a concrete pad large enough for anchoring Shower/Eyewash unit. Once concrete pad has completely cured, follow anchoring instructions in step two.

Step Two: PEDESTAL

1. While holding the floor flange assembly "A" in position, mark mounting hole positions.
2. Remove flange assembly and install appropriate floor anchors to receive mounting bolts (supplied by others).
3. Assemble components "A thru E" and "G thru L" in sequential order using proper plumbing techniques to seal all made up threads. Refer to rough in drawing above to accomplish required overall height.
4. Re-position assembly and install with mounting bolts and washers.

Step Three: HYDRANT CONNECTIONS

1. Connect Hydrants (items M & N) to Shower/eyewash assembly using proper plumbing techniques to seal all made up threads.



INSTALLATION INSTRUCTIONS CONTINUED:

Step Four: SANITARY DRAIN CONNECTION

Note: Refer to Rough-In for supply and drain line locations.

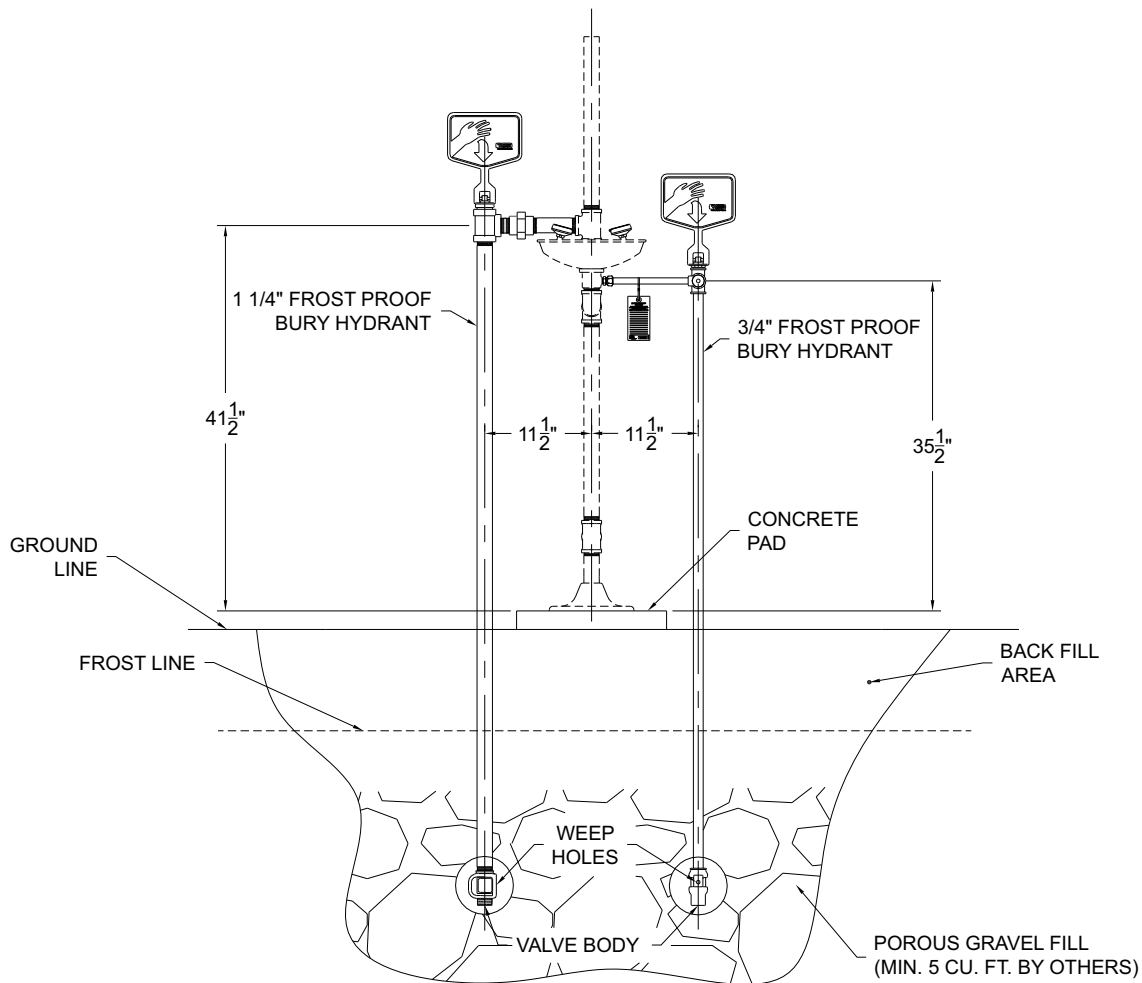
1. Install necessary pipe fittings (supplied by others) to make connection to 1 1/4" NPT waste tee with sanitary drain line.

Step Five: TEST

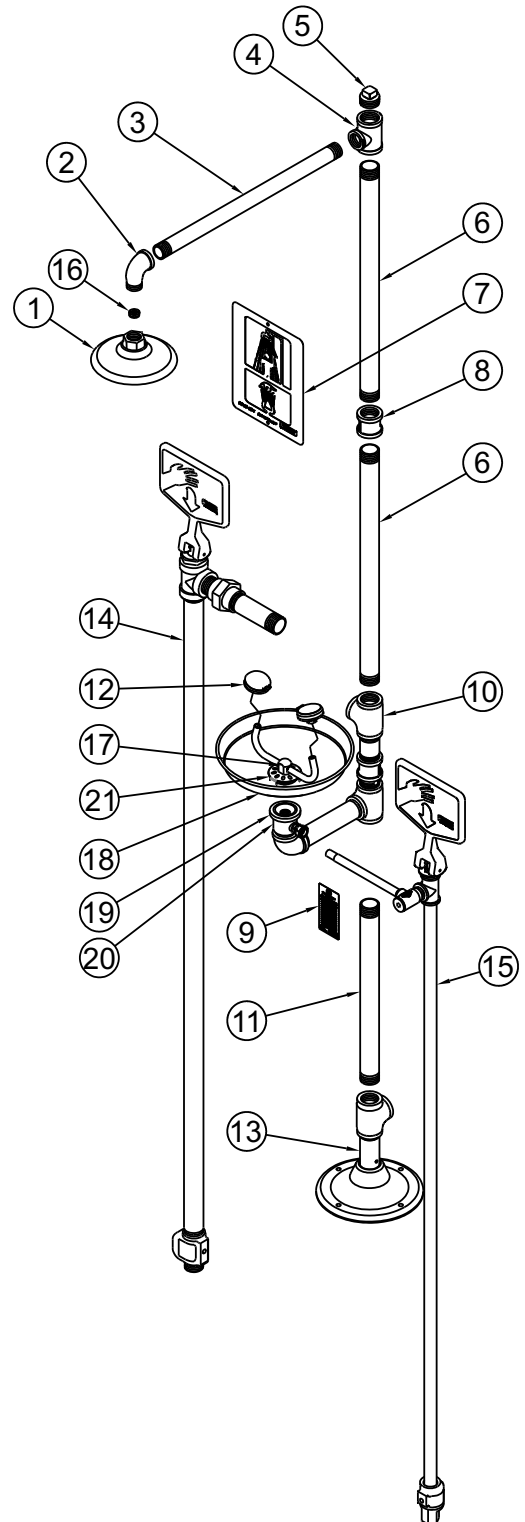
1. Turn on water supply to both 1 1/4" and 3/4" potable water supply.
2. Inspect system for leaks.
3. Operate push handles on hydrants to verify that shower and eye/ face wash flow properly.
4. Shut off push handle and verify that the shower and eye/face wash shut off properly.

Step SIX: SIGNAGE AND INSPECTION

1. Install sign "F" with clear visibility as shown, with appropriate hardware (supplied by others).
2. Attach inspection tag "P" supplied, with plastic zip tie to 1/2" supply line as shown.



ITEM #	PART NUMBER	DESCRIPTION
1	7102-300-001	PLASTIC SHOWERHEAD ASSY.
2	7100-138-022	1" GALV STREET ELBOW-YELLOW
3	1936-031-022	1" x 21.50" NPT GALV. PIPE-YELLOW
4	7100-130-022	1 1/4" X 1 1/4" X 1" GALV. TEE - YELLOW
5	7100-128-022	1" GALV. PLUG - YELLOW
6	7100-173-022	1 1/4" X 24.125"L GALV PIPE - YELLOW
7	7100-404-000	SAFETY EYE/SHOWER PLACARD -SGN3
8	7101-016-022	1 1/4" GALV. COUPLING - YELLOW
9	7100-401-000	INSPECTION TAG
10	7107-142-001	FPB EYE/FACEWASH ASSEMBLY
11	7100-180-022	1 1/4" X 18.375"L GALV. PIPE-YELLOW
12	7101-100-001	EYEWASH NOZZLE
	7101-104-001	FACEWASH NOZZLE
	7101-057-001	EYEWASH NOZZLE W/ S/S LID
	7101-058-001	FACEWASH NOZZLE W S/S LID
13	7101-030-022	BASE FLANGE SUB ASSY-YELLOW
14	7107-121-022	1-1/4" WOODFORD HYDRANT, 60" LONG, YLW
	7107-123-022	1-1/4" WOODFORD HYDRANT, 72" LONG, YLW
	7107-125-022	1-1/4" WOODFORD HYDRANT, 84" LONG, YLW
	7107-127-022	1-1/4" WOODFORD HYDRANT, 96" LONG, YLW
15	7107-122-022	3/4" WOODFORD HYDRANT, 66" LONG, YLW
	7107-124-022	3/4" WOODFORD HYDRANT, 78" LONG, YLW
	7107-126-022	3/4" WOODFORD HYDRANT, 90" LONG, YLW
	7107-128-022	3/4" WOODFORD HYDRANT, 54" LONG, YLW
16	7102-351-000	SHOWER FLOW REGULATOR-ONLY
17	7101-003-001	YOKE STEM ASSEMBLY
18	7101-005-000	PLASTIC BOWL
	7101-008-000	S/S BOWL
19	7101-046-000	PLASTIC BOWL GASKET
	7101-048-000	S/S BOWL GASKET
20	7101-054-022	BASIN DRAIN CASTING-YELLOW
21	7100-108-000	BOWL STRAINER



PARTS LIST

ITEM #	PART NUMBER	DESCRIPTION
1	7102-305-001	S/S SHOWER HEAD ASSY
2	7100-232-000	1" S/S STREET ELBOW
3	2015-016-000	1" x 21.50" NPT S/S. PIPE
4	7100-131-000	1 1/4" X 1 1/4" X 1" S/S TEE
5	7100-129-000	1" S/S PLUG
6	7100-205-000	1 1/4" X 24.125"L S/S PIPE
7	7100-404-000	SAFETY EYE/SHOWER PLACARD -SGN3
8	7101-017-000	1 1/4" S/S. COUPLING
9	7100-401-000	INSPECTION TAG
10	7107-200-001	S/S FPB EYE/FACEWASH ASSEMBLY
11	7100-241-000	1 1/4" X 18.375"L S/S PIPE
12	7101-100-001	EYEWASH NOZZLE
	7101-104-001	FACEWASH NOZZLE
	7101-057-001	EYEWASH NOZZLE W/ S/S LID
	7101-058-001	FACEWASH NOZZLE W S/S LID
13	7101-406-001	S/S BASE FLANGE SUB ASSY
14	7107-183-001	1-1/4" WOODFORD HYDRANT, 60" LONG
15	7107-163-001	3/4" WOODFORD HYDRANT, 66" LONG
16	7102-351-000	SHOWER FLOW REGULATOR-ONLY
17	7101-404-001	S/S YOKE STEM ASSEMBLY
18	7100-008-000	S/S BOWL
19	7101-048-000	S/S BOWL GASKET
20	7101-073-001	S/S BASIN DRAIN
21	7100-108-000	BOWL STRAINER

