

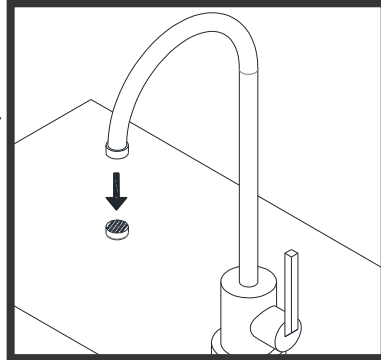


# INSTALLATION, OPERATION AND MAINTENANCE INSTRUCTIONS

## S0000-FME

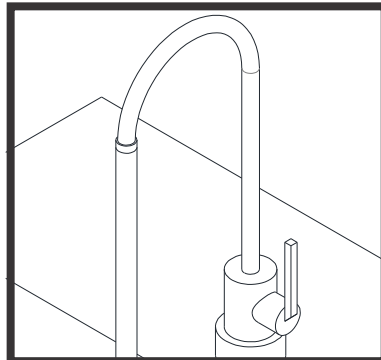
### STEP 1

Remove existing aerator off Faucet.



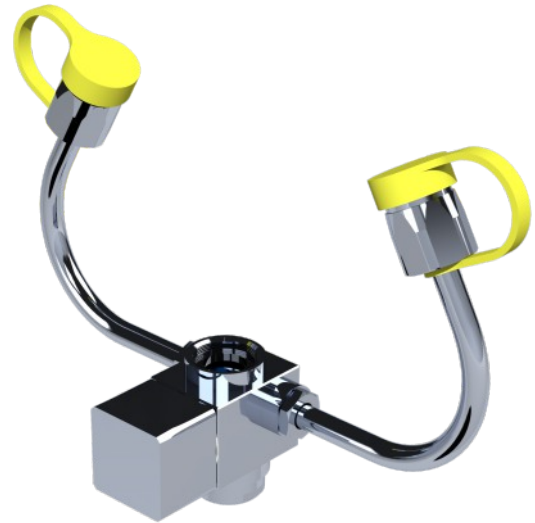
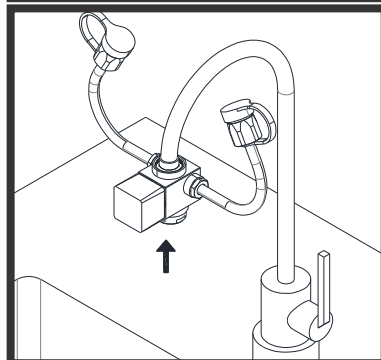
### STEP 2

Flush faucet for any foreign debris.



### STEP 3

Screw on diverter valve with On-Off Knob facing toward the front of fixture.



### NOTE:

*This Fixture does not conform with ANSI Z358.1 requirements and is only intended as a supplement to a code compliant, plumbed eye-wash device.*

### GENERAL:

Install signage at eye-wash station as required (not included).

Although device is non-compliant, it is recommended to adhere to ANSI Guidelines for emergency eye-wash devices to the degree possible. Carefully review requirements and incorporate to suit application and site conditions.

S0000-FME is provided with 55/64"-27 Female thread to adapt to existing Faucet. When required, Adapters are optionally available from Acorn Safety® in sizes shown below or may be purchased separately.

For OSHA Compliance on installation delivered hot water temperature cannot exceed **100°F (37.78°C)**

## AVAILABLE ADAPTERS FROM ACORN SAFETY

Model 305



male 11/16" x 27 thread

Model 310



male 15/16"-27 thread

Model 306



male 13/16" x 27 thread

Model 339



female 3/4" x 27 thread

Model 345



female 3/4" x 27 garden hose thread

### TECHNICAL ASSISTANCE TOLL FREE TELEPHONE NUMBER

**1.800.591.9360**

**TECHNICAL ASSISTANCE FAX: 1.626.855.4894**

15125 Proctor Ave :: City of Industry, CA 91746  
(800) 591-09372 :: WWW.Acorn.com

**Acorn Safety** a division of Acorn Engineering Company™