



ACORN SAFETY  
P.O. BOX 3527  
CITY OF INDUSTRY, CA 91744-0527  
**UNITED STATES OF AMERICA**  
[WWW.ACORNSAFETY.COM](http://WWW.ACORNSAFETY.COM)

## **INSTALLATION, OPERATION AND MAINTENANCE INSTRUCTIONS**

### **FLOW SWITCHES**



**Models S0000-FLW1 / S0000-FLW2**

**TECHNICAL ASSISTANCE TOLL FREE TELEPHONE NUMBER**  
**1.800.591.9360**  
**TECHNICAL ASSISTANCE FAX: 1.626.855.4894**

#### **NOTES TO THE INSTALLER:**

- 1. Please leave this documentation with the owner of the fixture when finished.**
- 2. Please read this entire booklet before beginning the installation.**
- 3. Check your installation for compliance with plumbing, electrical, ANSI Z358.1 and other applicable codes.**

#### **LIMITED WARRANTY** **UNITED STATES AND CANADA**

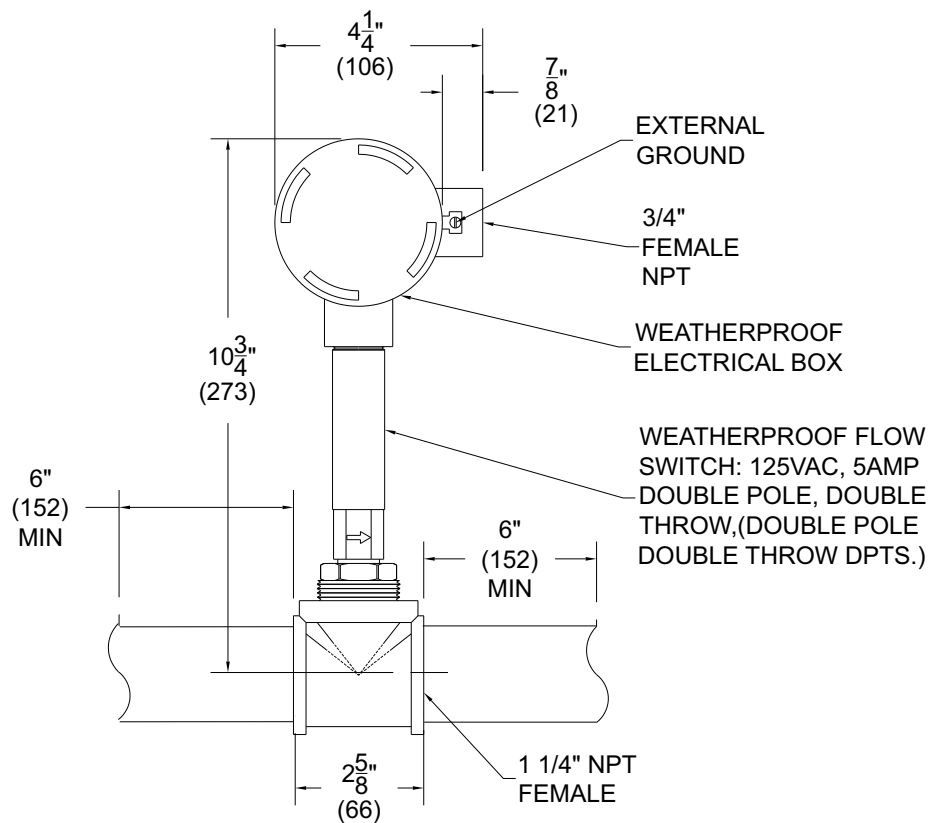
Acorn Safety warrants that its products are free from defects in material or workmanship under normal use and service for a period of one year from date of shipment. Acorn's liability under this warranty shall be discharged solely by replacement or repair of defective material, provided Acorn is notified in writing within one year from date of shipment, F.O.B. Industry, California.

This warranty does not cover installation or labor charges and does not apply to materials, which have been damaged by other causes such as mishandling or improper care or abnormal use. The repair or replacement of the defective materials shall constitute the sole remedy of the Buyer and the sole remedy of Acorn under this warranty. Acorn shall not be liable under any circumstances for incidental, consequential or direct charges caused by defects in materials, or any delay in the repair or replacement thereof. This warranty is in lieu of all other warranties expressed or implied. Product maintenance instructions are issued with each unit and disregard or non-compliance with these instructions will constitute an abnormal use condition and void the warranty. Stainless steel must be protected on job sites during construction and must be properly maintained after the water has been introduced into the safety product or Acorn's warranty is void.

**PRELIMINARY STEPS**

1. Read the installation instructions prior to beginning the installation.
2. Separate parts from packaging and verify all necessary parts are accounted for and undamaged. Obtain missing or damaged parts from Acorn Safety prior to beginning installation.
3. Flush water supply lines prior to installation. This will remove unwanted debris from the lines and prevent unwanted blockages in the safety equipment.
4. In order to comply with ANSI Z358.1, the safety equipment must be inspected periodically. An inspection tag is provided for documentation purposes.
5. All employees at risk of contamination should be informed and trained in the use of this and any other safety equipment. The signage provided should be posted appropriately in close proximity to this equipment.

**ROUGH-IN**

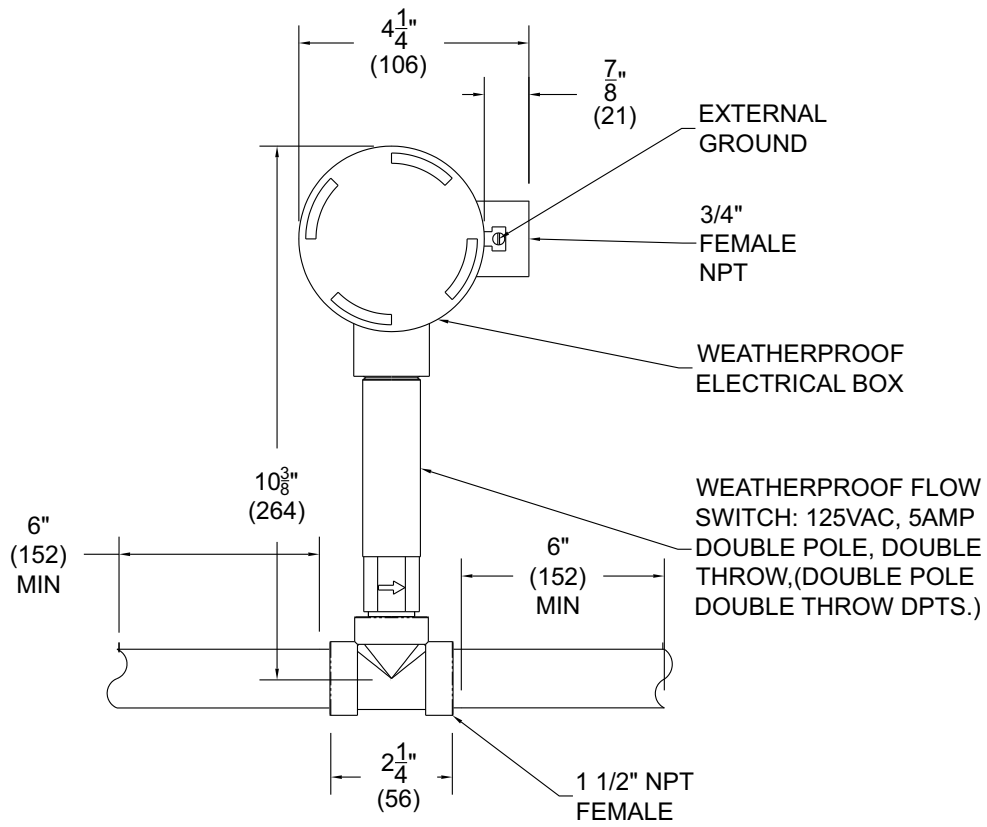


S0000-FLV1

NOTES:

1. ALL DIMENSIONS ARE IN INCHES (MM)
2. OPERATING VOLTAGE: 120VAC
3. FLOW SWITCH MUST BE INSTALLED IN A HORIZONTAL PIPE RUN, UPSTREAM OF THE UNIT AND AT LEAST 6" FROM ANY OTHER FITTING.

**ROUGH-IN**



S0000-FLW2

NOTES:

1. ALL DIMENSIONS ARE IN INCHES (MM)
2. OPERATING VOLTAGE: 120VAC
3. FLOW SWITCH MUST BE INSTALLED IN A HORIZONTAL PIPE RUN, UPSTREAM OF THE UNIT AND AT LEAST 6" FROM ANY OTHER FITTING.

**INSTALLATION INSTRUCTION**

Supplies required: (not provided by Acorn)

1. 14 gauge wire to make all appropriate connections.
2. 1/4" piping required to meet minimum distances for switch
3. Wall fasteners for signage mounting
4. Pipe sealant or Teflon tape for sealing water connections

**IMPORTANT: flush water supply lines prior to connection to safety equipment.**

**Notes:**

- Flow Switch must be installed with tee fitting in horizontal position, switch body in vertical position and at least 6" from closest fitting. Direction of flow is marked on switch body.
- Use hand tools and wrenches in a manner which will prevent marring finished surfaces. Strap wrenches or tools with plastic jaw linings are highly recommended.
- Refer to Rough-in for location of supply.
- Fragments of Teflon tape or pipe sealant residue can interfere with the proper operation of this unit. Ensure pipe sealant methods do not cause contamination in the system.

**Step one: Flow Switch Installation**

1. Determine location of flow switch in water supply line. The inlet and outlet ports of the flow switch must be a minimum of 6" from any tees or elbows in the water supply line. See rough-in drawing.
2. Mount the flow switch in the water supply line. The switch body must be in the vertical position with the water pipe horizontal. The water flow must be in the direction of the arrow that is marked on the flow switch body.

**Step two: Electrical Connections**

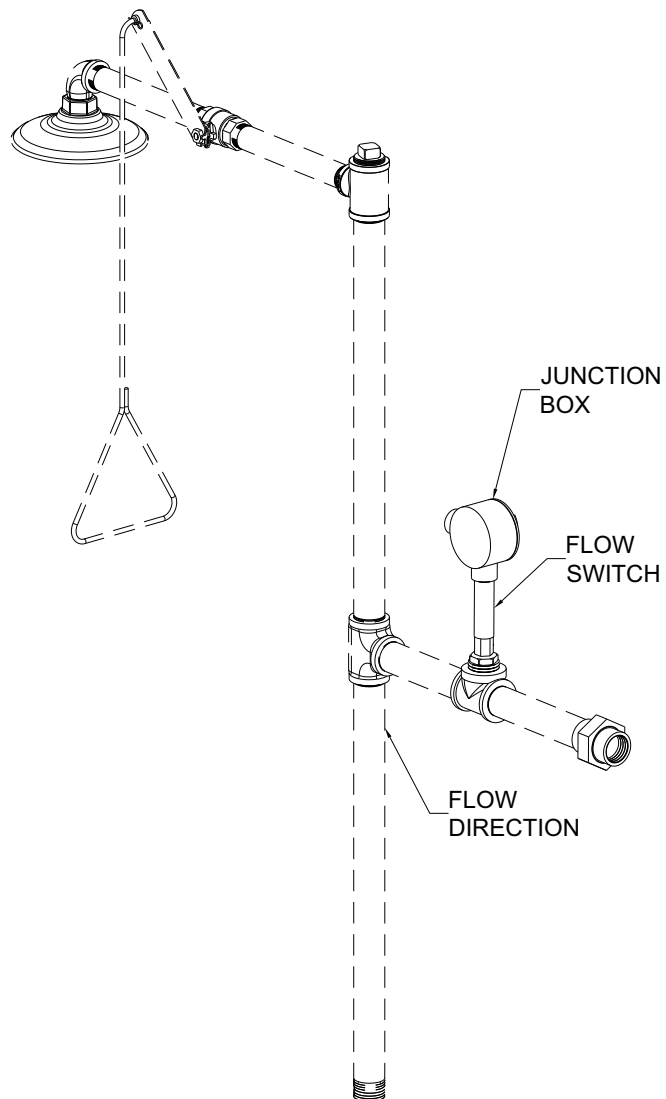
1. Connect customer wiring inside junction box per application (normally open or normally closed), and secure ground wire per code for proper grounding of system.

NOTE: Flow Switch Wiring Key

- Black Wire – Common
- Blue Wire – Normally Open
- Red Wire – Normally Closed

**Step three: Test**

1. Supply water to fixture and flush air from system.
2. Turn on water supply to test for leaks.
3. Test flow switch to insure it is working properly with any other alarm or remote equipment.



**PARTS LIST**

ITEM #	PART NUMBER	DESCRIPTION
1	7103-102-000	1/2" FLOW SWITCH-DOUBLE POLE, DOUBLE THROW
	7103-104-000	1-1/4" FLOW SWITCH-DOUBLE POLE, DOUBLE THROW

