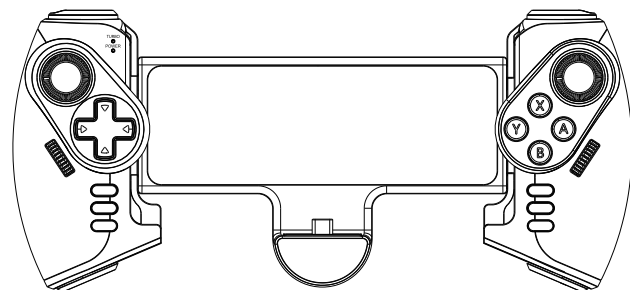


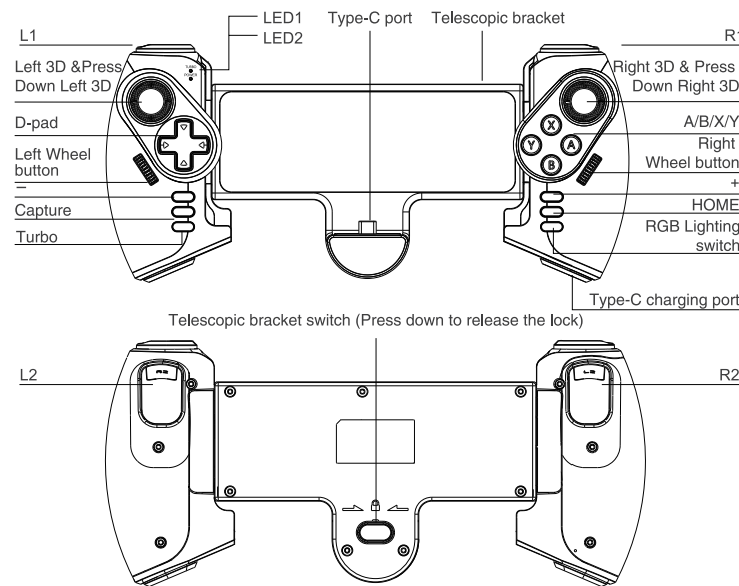
N-S Retractable Controller With Colorful Lighting

User Manual



After Sale E-mail: manba.service@gmail.com
Official Website E-mail: service@manba.cc

Instruction button function:



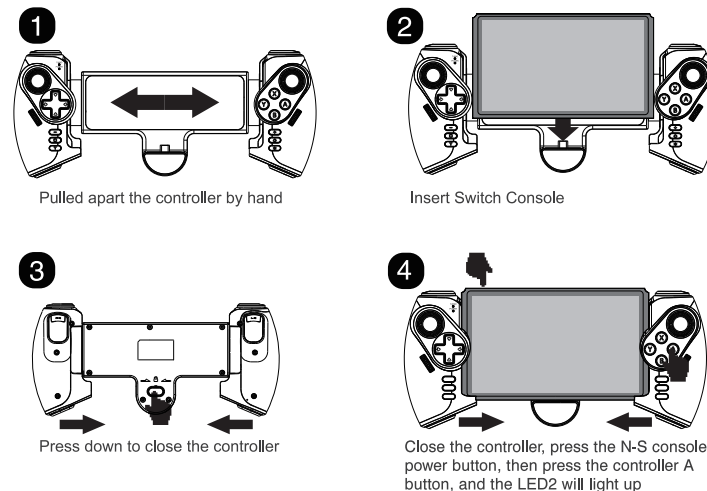
Specifications:

- This product is suitable for N-S/ N-S OLED console.
- This controller can connect N-Switch console through the Type-C port. NO App needed & no activation.
- Equipped with PD fast charging which allows you to play and charge at the same time.
- All function buttons correspond to Switch pro gamepad button.
- Built-in 6-axis gyroscope and support "Turbo" function.
- Left & right wheel button to control the sensitive of the Left & Right 3D joysticks.
- With RGB lighting design, you can switch the color via the button.

* Due to uncontrollable factors such as software upgrades or source code changes on the official game platform, some games cannot be connected and operated with this controller. Our company is not responsible for any of the consequences. Our company reserves the final right of interpretation regarding this matter.

Connect with N-S console:

Before using this product, please confirm the system settings of the N-S " Pro Controller Wired Communication" option is turned on;



Electrical Parameters:

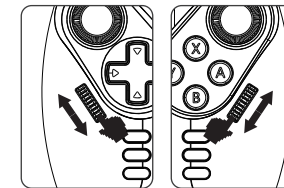
- Voltage: DC5V
- Working current : 70mA

TURBO / AUTO function:

- Action keys (A/B/X/Y/L1 /L2 / R1 /R2 also support the turbo function
- Setting :
Long press the action key and then press the TURBO button to turn on the TURBO function.
Long press the action key and then press the TURBO button again to turn on the AUTO function.
Long press the action key and then press the TURBO button third times to turn off the TURBO / AUTO function.
- 3 levels of TURBO / AUTO function.
TURBO + Right 3D joystick to increase the frequency
TURBO + Left 3D joystick to decrease the frequency.
- TURBO + '-' button to clear all the turbo setting
- Once disconnect the controller, all the TURBO / AUTO will be cleared.
Please redo the setting step to turn on the TURBO / AUTO function.

Adjust the sensitive of Joystick

- The default is normal mode (100%);
- Toggle up to reduce sensitivity, and toggle down to increase sensitivity (adjustment range: 100%-20%);
- Shut down to restore the default;



RGB lighting control:

- The RGB lights default as gradient mode
 - Short press the RBG lighting switch to change as current light;
 - Short press the RBG lighting switch again to turn off the RBG light;
 - Short press the RBG lighting switch third times return to the gradient mode;
- * Once turned off the controller, the default lighting mode will be restored;

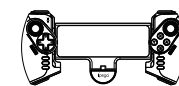
Vibration control:

- Vibration intensity settings:
Strong/ Medium/ Weak/ No vibration 4 levels adjustable, the default is medium vibration intensity.
 - Press and hold the TURBO button + Left 3D joystick up to increase the vibration intensity.
 - Press and hold the TURBO button + Left 3D joystick down to reduce the vibration intensity or turn off the vibration function.
- * Once the controller and console disconnected, all vibration will be cleared.

Note:

- Please do not store this product in wet or high-temperature areas.
- Don't knap, beat, drub, pierce, or try to decompose this product, to avoid unnecessary damage to the product.
- Please keep away the fire or heating area while charging the console.
- Non professional personnel should not disassemble the product, otherwise it will not be covered in the after-sales warranty service.

Accessories List:



Gamepad x1



User Manual x1

After-sales Service

If there are any problems with your product, please contact our service team. We hope you never have the need, but if you do, our service is friendly and hassle-free.



Manba Game



@manba_official



manba_official



Official Website: www.manba.cc
(Website After Sales: service@manba.cc)



US/CA After Sale E-mail: manba.service@gmail.com



After-sale FB Message



After Sale E-mail



Manba Website