

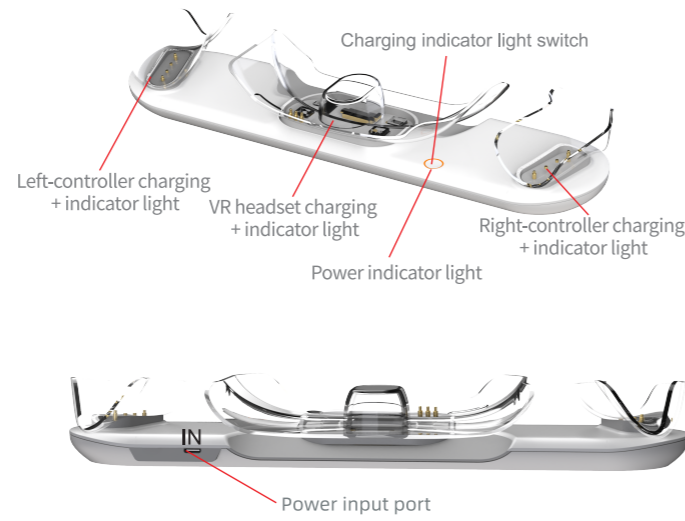
For Quest 3 VR  
**Multifunctional Charging Station**



AL-Q128  
 Manba E-mail:  
**manba.service@gmail.com**

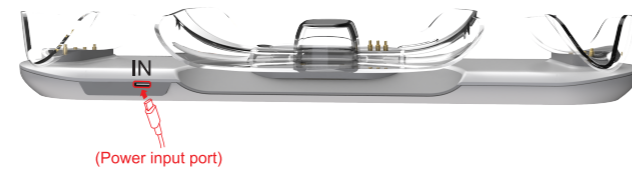
V1.0

**Product schematic diagram**



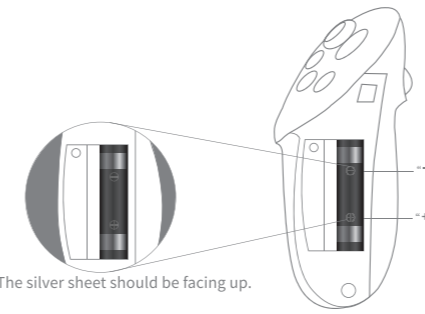
**Instructions for use**

- Use a Type-c interface power adapter with 15V 3A or above for power supply. Insert the Type-c (IN) of the charging dock for charging. **In order to ensure a good charging effect, please use our equipped power adapter (15V3A)**



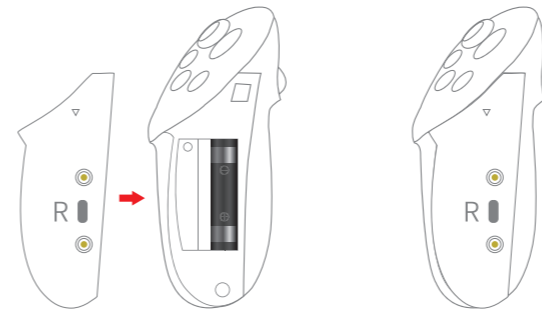
**Charging VR controllers**

- ① This product requires the installation of our company's matching batteries and battery covers for the controllers, and then the controllers can be directly placed on the station for charging.  
 Tip: The silver sheet should be facing up

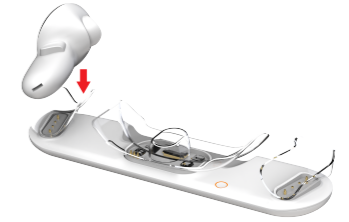


Install and align as specified

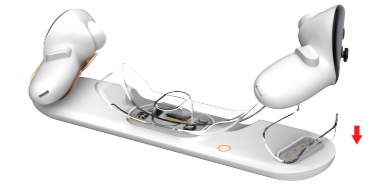
- ② Since the original controller battery cover does not have a battery contact, after you insert battery, you need to put our battery cover (has battery contacts) on the controller first, and then place the controller on the charging station for charging.



- ③ Put in a VR controller that needs to charge



- ④ The indicator turns orange and add another VR controller

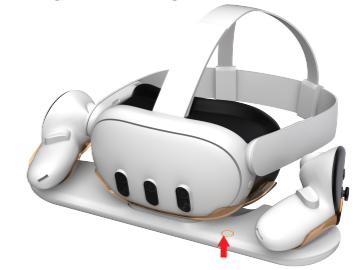


- ⑤ Both VR controller charging indicator lights are orange

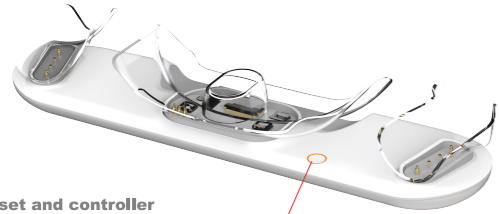


**Charging VR headset**

Place the VR headset on the charging stand, and the charging indicator light will turn orange



• Charging indicator lights



**Headset and controller charging indicator lights :**

- |               |   |
|---------------|---|
| No charging   | <b>Power indicator light:</b>                   |
| Charging      | Slow charging / no charging:                    |
| Charging Done | Orange breathing light flashing slowly          |
|               | Fast charging: Orange breathing light always on |

NOTE:

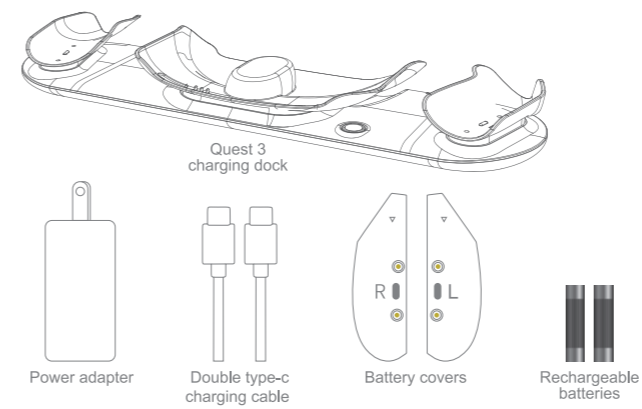
1. When the battery is severely depleted (with 0 battery charge) due to long-term non use, it is necessary to first place the battery in the controller, then place the controller in the base, and then connect the power supply to activate battery charging;
2. If the VR headset is not used for a long time and the battery is depleted (0), the VR headset needs to be charged and activated for about 15 minutes when placed on the base. During the charging activation period, the charging base indicator light turns green, and after the VR headset is successfully activated, the charging indicator light turns orange;
3. If the battery level of the VR headset is below 20%, it should be charged to effectively extend the battery life of the VR headset;
4. When charging the controller, as the VR headset does not update the controller's battery level in real time, it is necessary to restart the VR headset to display the current controller's battery level. Approximately 80% full charge.

**Precautions**

1. When this product is not in use, please keep it away.
2. This product cannot be used or stored in a humid environment.
3. When this product is used or stored, dust and heavy pressure should be avoided as much as possible, so as not to affect the service life.
4. If this product is immersed in water, crashed or damaged due to improper use, which causing electrical performance problems, please stop using it.
5. Do not use external heating equipment such as a microwave oven to dry it.
6. If there is any damage, please send it to the maintenance department for repairing in time and do not disassemble it by yourself.
7. Do not play with this product for children.

Product model	AL-Q128
Power input interface	TYPE-C
Rated input voltage of power supply	15V
Rated input current of power supply	3A
Rated capacity of controller battery	1800mAh
Charging voltage	Controller battery: 0-1.5V Headset: 12V
Charging current	Controller power: 0-600 mA* 2 Headset: 2A
Charging time	Controller battery about 4H Headset about 2.5H
Working temperature	5~45°
Working humidity	20~80%

**Package contents**



**After-sales**

If there are any problems with your product, please contact our customersupport team. We hope you never have the need, but if you do, our service is friendly and hassle-free.

**manba.service@gmail.com**



Manba E-mail