

WWW.JAMESHARVESTCO.COM

HARVEST



JAMES HARVEST SPORTSWEAR



The James Harvest Sportswear collection is based on American collegiate fashion and is characterised by high quality.

A huge amount of effort has been put into the design in order to make the clothes both functional and fashionable.

Experience continues to show that many businesses and organizations that regard quality as an important element in their market communication regularly choose James Harvest Sportswear as their supplier of identity clothes/ advertising garments.

Adds profile to your business®



CONTENTS

4 POLOSHIRTS

- | | |
|--------------|------------|
| 5 GREENVILLE | 7 LARKFORD |
| 5 SUNSET | 7 SHELLDEN |

8 SWEATERS & KNITWEAR

- | | | |
|-------------|--------------|--------------|
| 9 ASHLAND V | 11 STONETON | 13 NOVAHILL |
| 9 CORNELL | 11 KNOWVILLE | 13 RICHMOND |
| 11 LARGO | 11 FONTANA | 13 SANTA ANA |

14 SHIRTS

- | | | |
|---------------|------------|--------------|
| 15 BURLINGHAM | 15 REDDING | 17 BALTIMORE |
| 15 JUPITER | 17 RENO | 17 TRIBECA |

18 OUTERWEAR

- | | | |
|---------------------|-----------------------|-------------|
| 19 WOODLAKE HEIGHTS | 19 MYERS ROCKINGFIELD | 21 WESTLAKE |
| | | 21 ORLANDO |

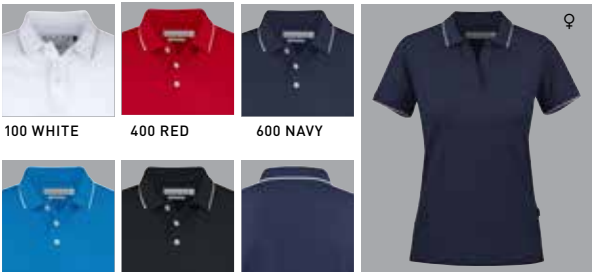
JAMES
HARVEST
SPORTSWEAR



JAMES HARVEST SPORTSWEAR

POLOSHIRTS

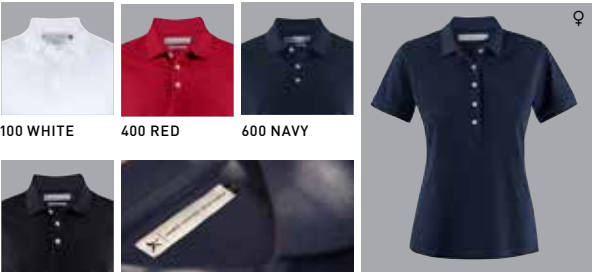
GREENVILLE MODERN 2135036



GREENVILLE REGULAR 2135035 ♂ S-4XL
GREENVILLE MODERN 2135036 ♂ S-XXL
GREENVILLE WOMAN 2125036 ♀ XS-XXL

Polo shirt with a classic white stripe at collar and sleeve. Comfortable stretch material in Lacost knit. Enzyme washed. Three mother of pearl-look buttons. Woman version with shorter placket and no buttons. Grey stripe on white polo shirts. Greenville is available in three stylish cuts; the traditional Regular, the more fitted Modern and the carefully figured Woman.

95% RINGSPUN, COMBED COTTON, 5% LYCRA®, 200 G/M²



SUNSET REGULAR 2135033 ♂ S-4XL
SUNSET MODERN 2135034 ♂ S-XXL
SUNSET WOMAN 2125034 ♀ XS-XXL

Polo shirt with side slits and white buttons in a comfortable cotton/Lycra® material. Sunset is available in three stylish cuts; the traditional Regular, the more fitted Modern and the carefully figured Woman.

95% COMBED COMPACT COTTON, 5% LYCRA®, 200 G/M²



SUNSET WOMAN 2125034



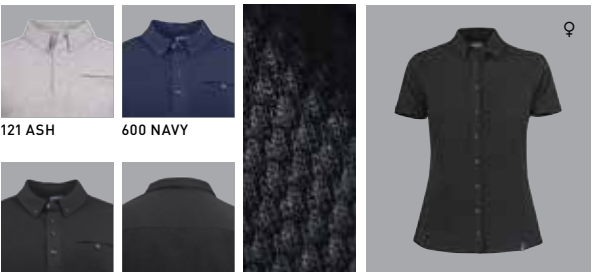
LARKFORD 2135030



LARKFORD 2135030 ♂ S-3XL
LARKFORD LADY 2125031 ♀ XS-XXL

Piqué shirt with button-down collar, detail in Oxford inside collarstand, rib in cuffs in contrast.

100% COMPACT COTTON, 250 G/M²



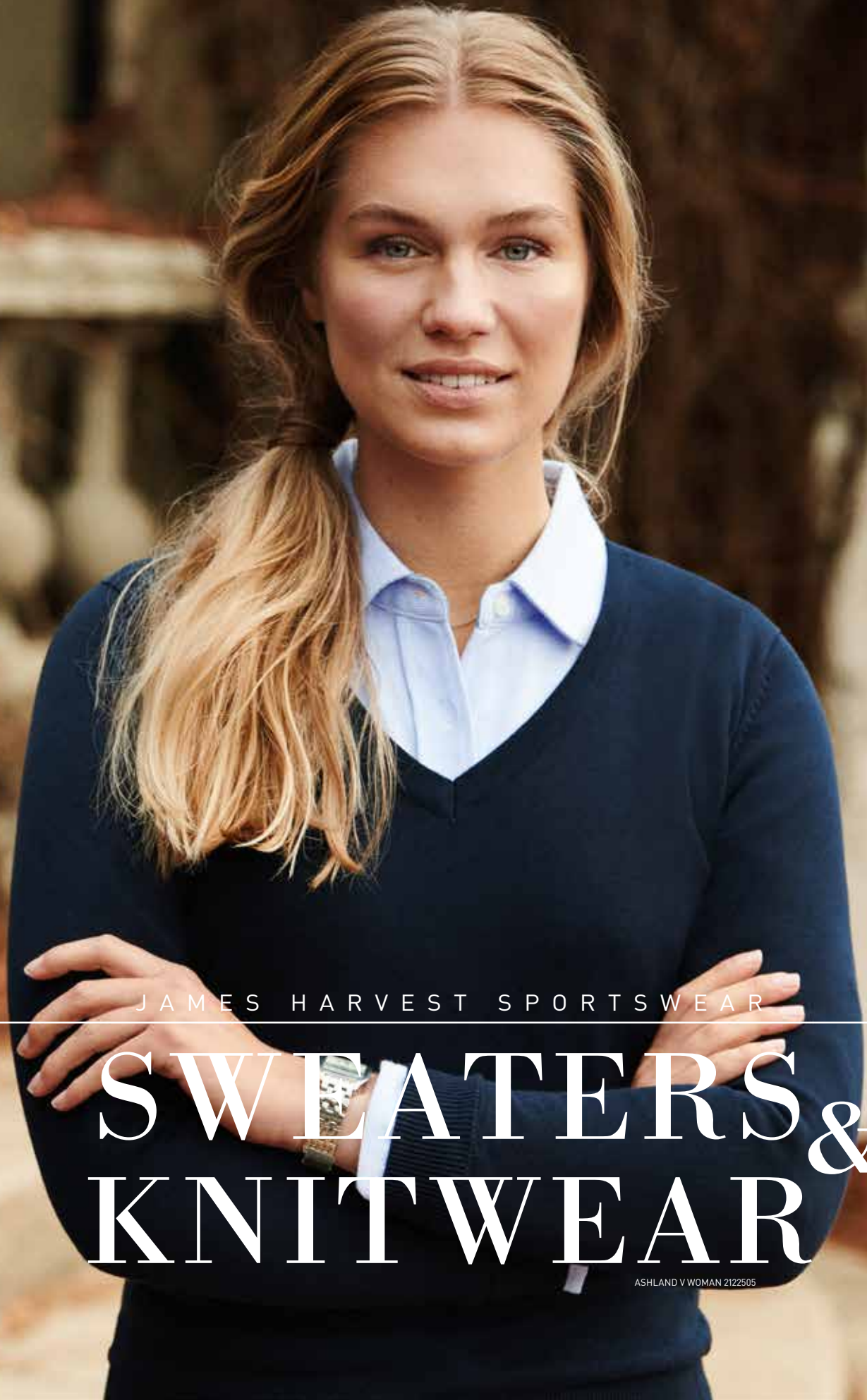
SHELLDEN 2115001 ♂ S-3XL
SHELLDEN LADY 2125032 ♀ XS-XXL

Polo shirt with side slits. Jaquard front and back with flat knitted sides, sleeves and collar. Men's shirt with button-down, chest pocket and four button collar stand. Women's style with buttoned front.

100% COTTON, 190 G/M²



SHELLDEN 2115001



JAMES HARVEST SPORTSWEAR

SWEATERS & KNITWEAR

ASHLAND V WOMAN 2122505



ASHLAND V 2112507 ♂
ASHLAND V LADY 2122505 ♀

Fine knit V-neck cotton sweater, 1 x 1 rib at cuff and hem. Double flatknit at neck.

100% COTTON, 12 GG



CORNELL 2132022 ♂
CORNELL LADY 2122038 ♀

Classic college crewneck sweater.

100% TERRY COTTON (MELANGE: 95% COTTON, 5% VISCOSE), ENZYME WASH, 280 G/M²



CORNELL 2132022



LARGO 2112028 & STONETON 2114007



LARGO ♂ S-3XL
Fine knit ½ zip sweater. Fully fashioned, with elasthan at bottom hem and sleeve rib.
100 % COTTON, SUPER COMBED



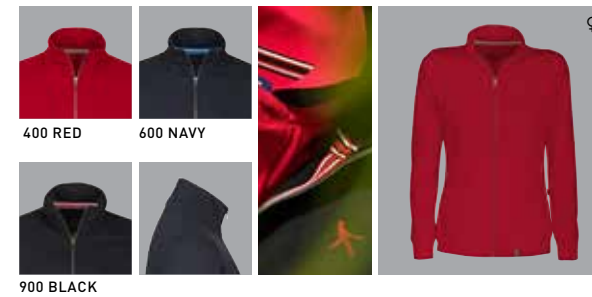
STONETON 2114007 ♂ S-3XL
STONETON LADY 2124007 ♀ XS-XXL
Long sleeved sweater in cotton tricot. Placket and contrasting seam on shoulder. Fabric is made of a slub yarn which gives a mélangé effect to fabric.
100% COTTON, 160 G/M²



KNOWVILLE 2112501 ♂ S-3XL
FONTANA 2122501 ♀ XS-XXL
Cardigan in soft cotton quality. Rib with elastane at sleeve and bottom hem.
100% COTTON



NOVAHILL 2132019



NOVAHILL 2132019 ♂
NOVAHILL LADY 2122019 ♀

S-3XL
 XS-XXL

Sweatshirt jacket in heavy jersey with unbrushed inside. Contrasting tape in neck, along zipper and at bottom rib. Front pockets. Half-moon in neck with printed label. 1x1 rib with elastane in rib. Rib detail at neck.

80% COTTON, 20% POLYESTER • 320 G/M²



RICHMOND 2132017 ♂
SANTA ANA 2122034 ♀

S-3XL
 XS-XXL

Heavy knit fleece jacket with decorative flatlock seams and elastic tipping. Zippers at centre front and front pockets. Brushed on the inside for a soft feeling. Anti-pilling treated.

100 % POLYESTER, 320 G/M²



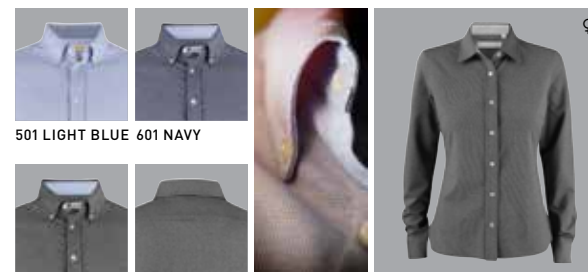
RICHMOND 2132017



JAMES HARVEST SPORTSWEAR

SHIRTS

BURLINGHAM LADY 2123028



BURLINGHAM 2113038 ♂ S-3XL
BURLINGHAM LADY 2123028 ♀ XS-XXL

Jersey shirt with oxford look. Woven details inside collar and side slits. Button down collar on men. Pearly colored buttons. Adjustable cuffs.

60% COTTON/40% POLYESTER , 165 G/M²



JUPITER 2113035 ♂ S-3XL
JUPITER LADY 2123025 ♀ XS-XXL

Denim shirt. Player's choice fitting. Button down collar, adjustable sleeve cuffs. Chest pocket on both sides. Checked pattern contrast on the inside of yoke and cuffs. Slightly curved bottom hem

100% COTTON. DENIM LOOK, 135 G/M²



REDDING 2113033 ♂ S-3XL
REDDING LADY 2123023 ♀ XS-XXL

Modern fit, high quality oxford shirt with Easy Care treatment. Tone-in-tone buttons and necktape in contrast colour.

100% COMBED COTTON, 135 G/M².

PLAYERS' CHOICE
 by James Harvest
 EASY CARE
 OEKO-TEX®
 STANDARD 100
 by Hohenstein



RENO 2113031



RENO 2113031 ♂ S-3XL
RENO LADY 2123021 ♀ XS-XXL

High quality shirt in combed cotton. Shirt in easy care treated fabric and enhanced lining seams, collar and sleeve ends. Striped pattern with contrast fabric under collar, placket and bottom sleeve. Modern fit.

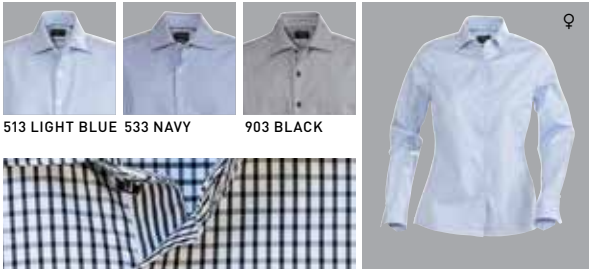
100% COMBED COTTON



BALTIMORE 2113030 ♂ S-3XL
BALTIMORE LADY 2123020 ♀ XS-XXL

High quality shirt in combed cotton. Shirt in Easy Care treated fabric and enhanced lining seams, collar and sleeve ends. Solid colour bodyfabric with contrast fabric under collar, placket and bottom sleeve. Modern fit.

100% COMBED COTTON



TRIBECA 2113032 ♂ S-3XL
TRIBECA LADY 2123022 ♀ XS-XXL

High quality shirt in combed cotton. Shirt in Easy Care treated fabric and enhanced lining seams, collar and sleeve ends. Check pattern with contrast fabric under collar, placket, sleeve and neck tape. Modern fit with cutting seams at back.

100% COMBED COTTON



JAMES HARVEST SPORTSWEAR

OUTERWEAR

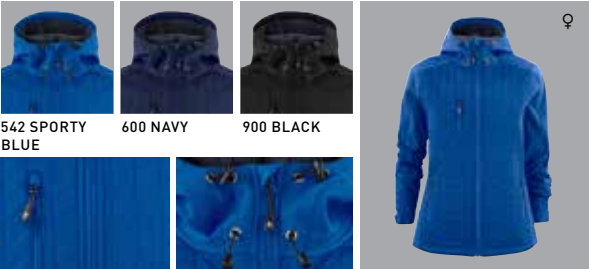
WOODLAKE HEIGHTS 2111037



WOODLAKE HEIGHTS 2111037 ♂ S-3XL
WOODLAKE HEIGHTS WOMAN 2121041 ♀ XS-XXL

Padded winter jacket. Reversed waterproof zipper at center front and side pockets. Side pockets finished together with the seam of the jacket on the inside, so they can be used as inner pockets as well. Adjustable press button closure at bottom sleeves. Hood adjustable with elastic cords on the sides, finished with an elastic tape at the seam.

SHELL: 100% RECYCLED PES, 230 G/M², BONDED WITH A PU MEMBRANE, WP 3000/ MVP 3000.
PADDING: 100% RECYCLED PES REPREEVE PADDING (BLUESIGN)



MYERS 2131041 ♂ S-3XL
MYERS WOMAN 2121038 ♀ XS-XXL

Hybrid jacket of wind and water repellent softshell and heat-quilted interlock with high breathability. Softshell parts in sleeves, shoulders and hood. Body of heat-quilted interlock with microfleece inside. C6 treatment of the entire jacket. Adjustable hood opening and lower edge with elasticated waistband and Velcro strap. Zipper in inner pocket. Mesh-lined front piece. Extra ventilation through front pockets.

SOFT SHELL: 96% POLYESTER, 4% ELASTANE, 280 G/M². BONDED WITH 100% PES FLEECE. WP = 10,000, MVP = 4,600. BODY: THERMAL QUILTED INTERLOCK WITH MICRO FLEECE INSIDE: 100% POLYESTER, 280 GR / M². WP = 800, MVP = 6,000





WOODLAKE HEIGHTS 2111037



ROCKINGFIELD 2111035 ♂ **ROCKINGFIELD LADY** 2121036 ♀

Winter jacket. Quilted lining "Sofeelate" by DuPonts, Ecofriendly renewable-sourced fiber. Hand feel and warmth retention close to natural down. Shell fabric on T/C 65/35 composition with C6 waterproof finish + PU coating on the inside. Metal zippers at front pockets and C.F zip. Magnets under windshield at front + metal push buttons (2 at top and 1 at btm). Adjustable with cord string at bottom hem and hood opening. Rib at btm sleeve (on the inside). Inner pocket with zip.

SHELL FABRIC; 65% PES, 35%. LINING; QUILTED 100% PES LINING (140 GSM SORONA BY DUPONTS INSULATION)



WESTLAKE 2111029 ♂ **WESTLAKE LADY** 2121028 ♀

Parka jacket in waterproof and breathable outer fabric. Equipped with practical pockets at front and inside jacket. Quilted inside lining with Harvest print all over. Adjustable drawstring at bottom hem and hood. Zipper at bottom sleeve with rib inside. 2-way zipper at front.

100% NYLON, WP 5000/MVP 5000



ORLANDO 2111028 ♂ **ORLANDO LADY** 2121027 ♀

Business jacket with light padding to wear over a suit. Zipper with hidden hood inside the collar. Detailed seams at front and back.

100 % POLYESTER

SYMBOLS

FUNCTIONAL GARMENT

Wind and water proof garment with moisture vapor transport and taped seams.

WP 3K MVP 5K

Water Proof 3000 mm MVP >5000/m²/24h

WP 5K MVP 4K

Water Proof 5000 mm MVP >4000/m²/24h

WP 10K MVP 8K

Water proof 10.000 mm MVP >8000/m²/24h

Washable at 60° C

Wind Proof

Wind Resistant

Water Proof

Water Resistant

Stretch fabric. Contains Lycra, Spandex or Elasthane.

Organic Cotton

Recycled Materials

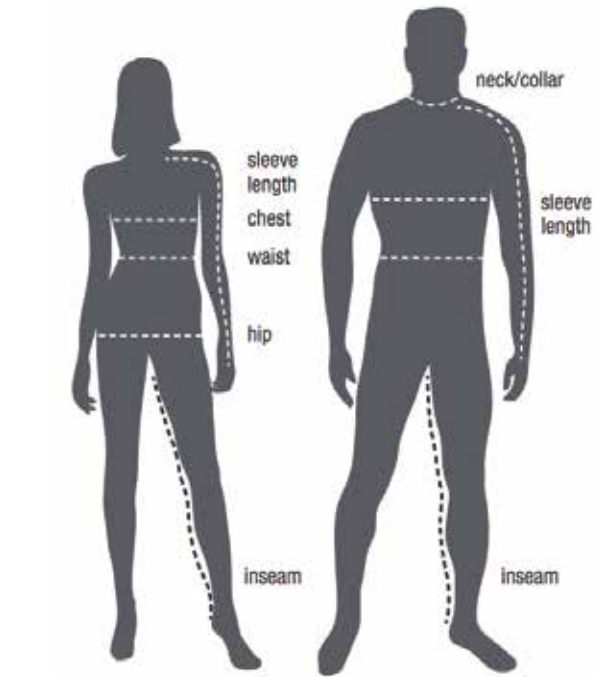
Oeko-Tex

Doubleface material

Easy Care Treated



COLOUR DIFFERENCES BETWEEN THE PHOTO AND THE ACTUAL GARMENT MAY ARISE DUE TO PHOTO TECHNICAL REASONS. THERE MIGHT ALSO BE DIFFERENCES BETWEEN AN IMAGEPICTURE AND A PRODUCT PICTURE OF THE SAME GARMENT. IN THESE CASES PLEASE REFER TO THE PRODUCT PICTURES IN THE FIRST INSTANCE.
E. & O. E.



MEN	XS 44	S 46	M 48-50	L 52	XL 56	XXL 60	XXXL 64
CHEST	88	92	98	104	112	120	128
WAIST	78	80	86	92	102	114	126
SEAT	96	100	106	112	120	128	136
SLEEVE	60	62	63.5	65	67	69	71
NECK	37.5	39	40.5	42	44	46	48
INNER LEG LGTH	76	79	80.5	82	83	84	86 (cm)

LADY	XS 34	S 36	M 38	L 40	XL 42	XXL 44	XXXL 46
CHEST	80	84	88	92	96	100	104
WAIST	66	69	72	76	80	84	88
SEAT	90	93	96	99	102	106	110
SLEEVE	58	59	60	61	62	63	64
NECK	37.5	38.5	39	41	41	42.5	44
INNER LEG LGTH	77	78	79	80	81	82	83 (cm)

CONVERTER									
NECK (CM)	36	38	40	42	44	46	48	50	52
SIZE	XS	S	M	L	XL	XXL	3XL	4XL	5XL
SIZE	35/36	37/38	39/40	41/42	43/44	45/46	47/48	49/50	51/52
INCHES	14	15	15 ¾	16 ½	17 ½	18	19	19 ¾	20 ½

YOUTH	XS 4	S 6-8	M 10-12	L 14-16	XL 18-20
CHEST	25-26	26-28	28-30	30-32	32-34
WAIST	24-25	26-28	28-30	30-32	32-34

We recommend the use of sizing samples in order to ensure the most accurate sizing for our styles.

HOW TO MEASURE YOUR BODY

- 1) NECK

Place the measuring tape around the neck at the height where the collar would normally rest. This will be just below your Adam’s apple. Stand relaxed. Do not crane your neck out or squeeze your chin down. The tape should be resting lightly on the skin, not squeezing it. Hold one finger under the tape measure to ensure some room for comfort.
- 2) SLEEVE LENGTH

Place one end of the measuring tape at the tip of the shoulder. where you imagine the shoulder seem of the shirt will be. Let your arm hang down at side, and run the measure tape along with it. Measure to the center of the meaty part of your palm. If you don’t have a partner, measure a shirt with sleeves that is the right length.

- 3) CHEST

Run the measuring tape around the fullest part of your chest, tight up under your armpits and over the shoulder blades. Let your arms hang down in a relaxed, natural pose. Do not puff out your chest or arch your back in any sort of pose that isn’t natural or sustainable.
- 4) WAIST

Run the tape around the fullest part of the belly. This is usually around the level of the belly button. The measuring tape should be snug on the skin, but not squeezing in. Let your arms hang down, and stand in a relaxed, natural pose. Do not puff out your stomach or try holding it in.

JAMES HARVEST SPORTSWEAR

J A M E S
HARVEST
sports  *wear*

