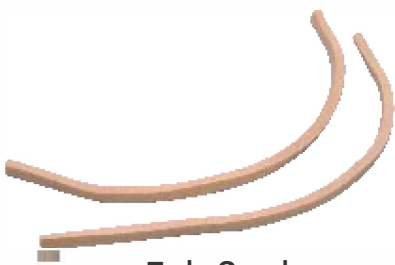


SN-Series



Felt Seal



Locating Ring

Basic Information for SN Series

“J&J” ‘SN’ Series horizontally split type Plummer Block are ideally suitable for moderate loads speed and relatively clean and temperate environment.

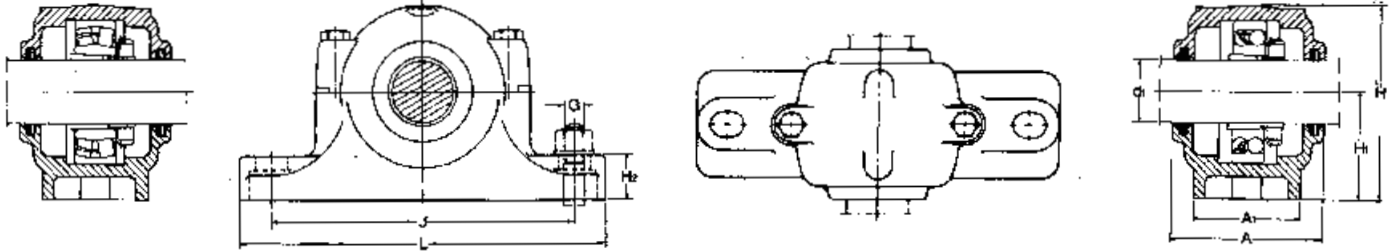
The Width of Bearing seat in the SN series plummer blocks is such that it gives bearings axial freedom. A locating bearing is positioned by the insertion of one or two locating rings as the case may be for its axial location.

SN Series plummer block are suitable for grease lubrication. Felt strips and grease nipples can be supplied along with plummer block on order.

| Series of Plummer Blocks | Suitable for Bearing Series |
|--------------------------|---|
| SN 500 | 1200 K, 2200 K, 22200 CK series bearings with adapter Sleeve |
| SN 200 | 1200, 2200, 22200 C series of cylindrical (Straight) bore bearings |
| SN 600 | 1300 K, 2300 K, 22300 CK series bearings with adapter Sleeve |
| SN 300 | 1300 K, 2300 K, 22300 C, Series of Cylindrical (Straight) bore bearings |
| SN 3000 | 23000 K series bearings with adapter sleeve |
| SN 3100 | 23100 K series bearings with adapter sleeve |

SN-Series Plummer Blocks

Series SN 500 for bearings with Adapter Sleeve

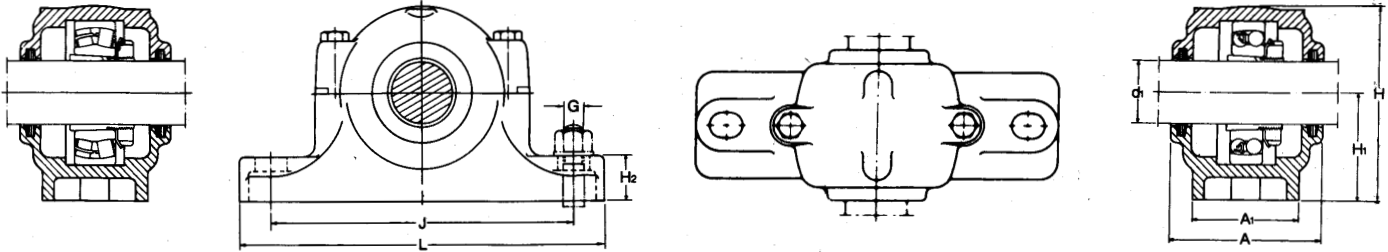


| SHAFT DIA | | Housing Dimensions (mm) | | | | | | | | Housing Designation | Bearing and Adapter Sleeve Designation | Locating ring (s) (to be ordered separately) Designations | Qty. | Felt Strip (2 per housing) Designation |
|----------------|-----|-------------------------|----------------|-----|----------------|----------------|-----|-----|----|---------------------|--|---|------|--|
| d ₁ | | A | A ₁ | H | H ₁ | H ₂ | J | L | G | | | | | |
| mm | in | | | | | | | | | | | | | |
| 20 | ¾ | 67 | 46 | 75 | 40 | 19 | 130 | 165 | 12 | SN 505 | 1205 K + H 205 | FRB 5/52 | 2 | FS 110 |
| | | | | | | | | | | | 2205 K + H 305 | FRB 7/52 | 1 | |
| 25 | 1 | 77 | 52 | 90 | 50 | 22 | 150 | 185 | 12 | SN 506 | 1206 K + H 206 | FRB 7/62 | 2 | FS 190 |
| | | | | | | | | | | | 2206 K + H 306 | FRB 10/62 | 1 | |
| | | | | | | | | | | | 22206 K + H 306 | FRB 10/62 | 1 | |
| 30 | 1 ⅙ | 82 | 52 | 95 | 50 | 22 | 150 | 185 | 12 | SN 507 | 1207 K + H 207 | FRB 8/72 | 2 | FS 190 |
| | | | | | | | | | | | 2207 K + H 307 | FRB 10/72 | 1 | |
| | | | | | | | | | | | 22207 K + H 307 | FRB 10/72 | 1 | |
| 35 | 1 ¼ | 85 | 60 | 110 | 60 | 25 | 170 | 205 | 12 | SN 508 | 1208 K + H 208 | FRB 8/80 | 2 | FS 190 |
| | | | | | | | | | | | 2208 K + H 308 | FRB 11/80 | 1 | |
| | | | | | | | | | | | 22208 CK + H 308 | FRB 11/80 | 1 | |
| 40 | 1 ½ | 85 | 60 | 110 | 60 | 25 | 170 | 205 | 12 | SN 509 | 1209 K + H 209 | FRB 6/85 | 2 | FS 190 |
| | | | | | | | | | | | 2209 K + H 309 | FRB 8/85 | 1 | |
| | | | | | | | | | | | 22209 CK + H 309 | FRB 8/85 | 1 | |
| 45 | 1 ¾ | 90 | 60 | 115 | 60 | 25 | 170 | 205 | 12 | SN 510 | 1210 K + H 210 | FRB 6.5/90 | 2 | FS 190 |
| | | | | | | | | | | | 2210 K + H 310 | FRB 10/90 | 1 | |
| | | | | | | | | | | | 22210 CK + H 310 | FRB 10/90 | 1 | |
| 50 | 2 | 95 | 70 | 130 | 70 | 28 | 210 | 255 | 16 | SN 511 | 1211 K + H 211 | FRB 6/100 | 2 | FS 260 |
| | | | | | | | | | | | 2211 K + H 311 | FRB 8/100 | 1 | |
| | | | | | | | | | | | 22211 CK + H 311 | FRB 8/100 | 1 | |
| 55 | 2 ⅙ | 105 | 70 | 135 | 70 | 30 | 210 | 255 | 16 | SN 512 | 1212 K + H 212 | FRB 8/110 | 2 | FS 260 |
| | | | | | | | | | | | 2212 K + H 312 | FRB 10/110 | 1 | |
| | | | | | | | | | | | 22212 CK + H 312 | FRB 10/110 | 1 | |
| 60 | 2 ¼ | 110 | 80 | 150 | 80 | 30 | 230 | 275 | 16 | SN 513 | 1213 K + H 213 | FRB 10/120 | 2 | FS 260 |
| | | | | | | | | | | | 2213 K + H 313 | FRB 12/120 | 1 | |
| | | | | | | | | | | | 22213 CK + H 313 | FRB 12/120 | 1 | |
| 60 | 2 ⅝ | 115 | 80 | 155 | 80 | 30 | 230 | 275 | 16 | SN 514 | 1214 K + H 214 | FRB 8.5/125 | 2 | FS 260 |
| | | | | | | | | | | | 2214 K + H 314 | FRB 10/125 | 1 | |
| | | | | | | | | | | | 22214 CK + H 314 | FRB 10/125 | 1 | |
| 65 | 2 ½ | 115 | 80 | 155 | 80 | 30 | 230 | 280 | 16 | SN 515 | 1215 K + H 215 | FRB 8/130 | 2 | FS 260 |
| | | | | | | | | | | | 2215 K + H 315 | FRB 10/130 | 1 | |
| | | | | | | | | | | | 22215 CK + H 315 | FRB 10/130 | 1 | |
| 70 | 2 ¾ | 120 | 90 | 175 | 95 | 32 | 260 | 315 | 20 | SN 516 | 1216 K + H 216 | FRB 8.5/140 | 2 | FS 330 |
| | | | | | | | | | | | 2216 K + H 316 | FRB 10/140 | 1 | |
| | | | | | | | | | | | 22216 CK + H 316 | FRB 10/140 | 1 | |
| 75 | 3 | 125 | 90 | 185 | 95 | 32 | 260 | 320 | 20 | SN 517 | 1217 K + H 217 | FRB 9/150 | 2 | FS 330 |
| | | | | | | | | | | | 2217 K + H 317 | FRB 10/150 | 1 | |
| | | | | | | | | | | | 22217 CK + H 317 | FRB 10/150 | 1 | |

Eye bolts for easy handling (from size 528 / 228 / 624 / 324).

SN-Series Plummer Blocks

Series SN 500 for bearings with Adapter Sleeve

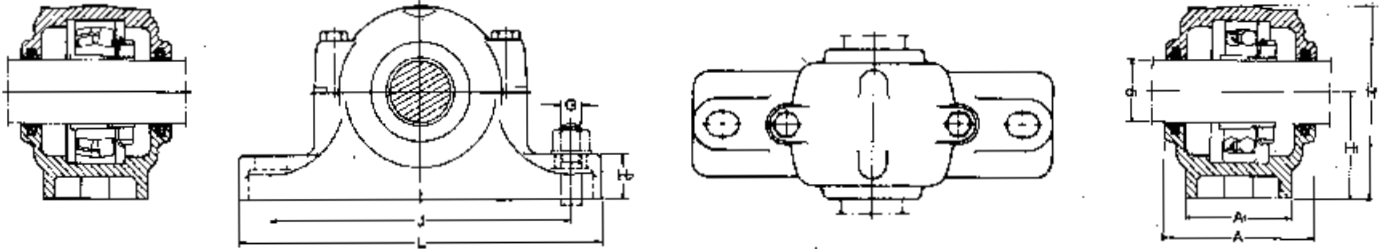


| SHAFT DIA | | Housing Dimensions (mm) | | | | | | | | Housing Designation | Bearing and Adapter Sleeve Designation | Locating ring (s) (to be ordered separately) Designations | Qty. | Felt Strip (2 per housing) Designation |
|----------------|-------|-------------------------|----------------|-----|----------------|----------------|-----|-----|----|---------------------|---|--|------------------|--|
| d ₁ | | A | A ₁ | H | H ₁ | H ₂ | J | L | G | | | | | |
| mm | in | | | | | | | | | | | | | |
| 80 | 3 1/8 | 145 | 100 | 195 | 100 | 35 | 290 | 345 | 20 | SN 518 | 1218 K + H 218 2218 K + H 318 22218 K + H 318 23218 K + H 2318 | FRB 16.2/160 FRB 11.2/160 FRB 11.2/160 FRB 10/160 | 2 2 2 1 | FS 330 |
| 85 | 3 1/4 | 145 | 100 | 210 | 112 | 35 | 290 | 345 | 20 | SN 519 | 1219 K + H 219 2219 K + H 319 22219 CK + H 319 | FRB 10.5/170 FRB 10/170 FRB 10/170 | 2 1 1 | FS 330 |
| 90 | 3 1/2 | 160 | 110 | 215 | 112 | 40 | 320 | 380 | 24 | SN 520 | 1220 K + H 220 2220 K + H 320 22220 CK + H 320 23220 CK + H 2320 | FRB 18/180 FRB 12/180 FRB 12/180 FRB 19.7/180 | 2 2 2 1 | FS 370 |
| 100 | 4 | 175 | 120 | 240 | 125 | 45 | 350 | 410 | 24 | SN 522 | 1222 K + H 222 2222 K + H 322 22222 CK + H 322 23222 CK + H 2322 | FRB 21/200 FRB 13.5/200 FRB 13.5/200 FRB 10/200 | 2 2 2 1 | FS 460 |
| 110 | 4 1/4 | 185 | 120 | 270 | 140 | 45 | 350 | 410 | 24 | SN 524 | 22224 CK + H 3124 23224 CK + H 2324 | FRB 14/215 FRB 10/215 | 2 1 | FS 460 |
| 115 | 4 1/2 | 190 | 130 | 290 | 150 | 50 | 380 | 445 | 24 | SN 526 | 22226 CK + H 3126 23226 CK + H 2326 | FRB 13/230 FRB 10/230 | 2 1 | FS 460 |
| 125 | 5 | 205 | 150 | 305 | 150 | 50 | 420 | 500 | 30 | SN 528 | 22228 CK + H 3128 23228 CK + H 2328 | FRB 15/250 FRB 10/250 | 2 1 | FS 510 |
| 135 | 5 1/4 | 220 | 160 | 325 | 160 | 60 | 450 | 530 | 30 | SN 530 | 22230 CK + H 3130 23230 CK + H 2330 | FRB 16.5/270 FRB 10/270 | 2 1 | FS 510 |
| 140 | 5 1/2 | 235 | 160 | 345 | 170 | 60 | 470 | 550 | 30 | SN 532 | 22232 CK + H 3132 23232 CK + H 2332 | FRB 17/290 FRB 10/290 | 2 1 | FS 680 |
| 150 | 6 | 235 | 170 | 367 | 180 | 65 | 520 | 620 | 30 | SN 534 | 22234 CK + H 3134 23234 CK + H 2334 | FRB 17/310 FRB 10/310 | 2 1 | FS 680 |
| 160 | 6 1/2 | 245 | 180 | 385 | 190 | 65 | 560 | 650 | 30 | SN 536 | 22236 CK + H 3136 23236 CK + H 2336 | FRB 18/320 FRB 10/320 | 2 1 | FS 680 |
| 170 | 6 3/4 | 255 | 190 | 405 | 200 | 70 | 580 | 680 | 36 | SN 538 | 22238 CK + H 3138 23238 CK + H 2338 | FRB 19/340 FRB 10/340 | 2 1 | FS 680 |
| 180 | 7 | 265 | 200 | 430 | 210 | 75 | 610 | 720 | 36 | SN 540 | 22240 CK + H 3140 23240 CK + H 2340 | FRB 20/360 FRB 10/360 | 2 1 | FS 680 |
| 200 | 8 | 285 | 220 | 480 | 240 | 80 | 680 | 820 | 45 | SN 544 | 22244 CK + H 3144 23244 CK + H 2344 | FRB 23/400 FRB 10/400 | 2 1 | FS 950 |

Eye bolts for easy handling (from size 528 / 228 / 624 / 324).

SN-Series Plummer Blocks

Series SN 600 for bearings with Adapter Sleeve

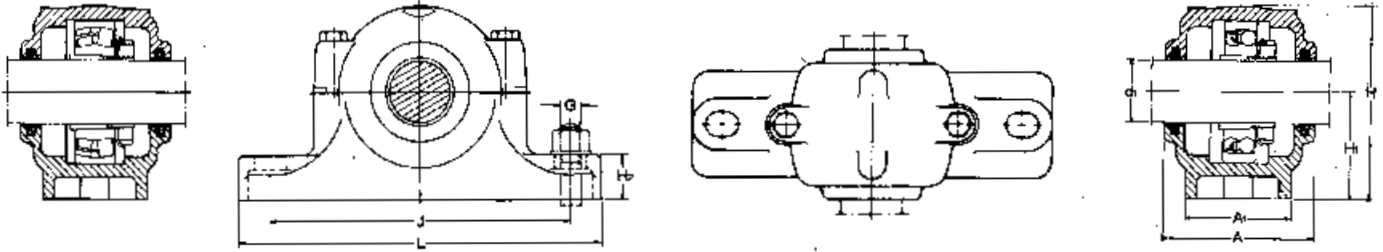


| SHAFT DIA | | Housing Dimensions (mm) | | | | | | | | Housing Designation | Bearing with Adapter Sleeve Designation | Locating ring (s) (to be ordered separately) Designations | Qty. | Felt Strip (2 per housing) Designation |
|----------------|-----|-------------------------|----------------|-----|----------------|----------------|-----|-----|----|---------------------|---|---|------------------|--|
| d ₁ | | A | A ₁ | H | H ₁ | H ₂ | J | L | G | | | | | |
| mm | in | | | | | | | | | | | | | |
| 20 | ¾ | 80 | 52 | 90 | 50 | 22 | 150 | 185 | 12 | SN 605 | 1305 K + H 305 2305 K + H 2305 | FRB 8.5/62 FRB 10/60 | 2 1 | FS 110 |
| 25 | 1 | 82 | 52 | 95 | 50 | 22 | 150 | 185 | 12 | SN 606 | 1306 K + H 306 2306 K + H 2306 | FRB 9/72 FRB 10/72 | 2 1 | FS 190 |
| 30 | 1 ⅛ | 90 | 60 | 110 | 60 | 25 | 170 | 205 | 12 | SN 607 | 1307 K + H 307 2307 K + H 2307 | FRB 10/80 FRB 10/80 | 2 1 | FS 190 |
| 35 | 1 ¼ | 95 | 60 | 115 | 60 | 25 | 170 | 205 | 12 | SN 608 | 1308 K + H 308 2308 K + H 2308 21308 K + H 308 22308 CK + H 2308 | FRB 10/90 FRB 10/90 FRB 10/90 FRB 10/90 | 2 1 2 1 | FS 190 |
| 40 | 1 ½ | 105 | 70 | 130 | 70 | 28 | 210 | 255 | 16 | SN 609 | 1309 K + H 309 2309 K + H 2309 21309 K + H 309 22309 CK + H 2309 | FRB 10.5/100 FRB 10/100 FRB 10.5/100 FRB 10/100 | 2 1 2 1 | FS 190 |
| 45 | 1 ¾ | 115 | 70 | 135 | 70 | 30 | 210 | 255 | 16 | SN 610 | 1310 K + H 310 2310 K + H 2310 21310 K + H 310 22310 CK + H 2310 | FRB 11.5/110 FRB 10/110 FRB 11.5/110 FRB 10/110 | 2 1 2 1 | FS 190 |
| 50 | 2 | 120 | 80 | 150 | 80 | 30 | 230 | 275 | 16 | SN 611 | 1311 K + H 311 2311 K + H 2311 21311 K + H 311 22311 CK + H 2311 | FRB 12/120 FRB 10/120 FRB 12/120 FRB 10/120 | 2 1 2 1 | FS 260 |
| 55 | 2 ⅛ | 125 | 80 | 155 | 80 | 30 | 230 | 280 | 16 | SN 612 | 1312 K + H 312 2312 K + H 2312 21312 K + H 312 22312 CK + H 2312 | FRB 12.5/130 FRB 10/130 FRB 12.5/130 FRB 10/130 | 2 1 2 1 | FS 260 |
| 60 | 2 ¼ | 130 | 90 | 175 | 95 | 32 | 260 | 315 | 20 | SN 613 | 1313 K + H 313 2313 K + H 2313 21313 K + H 313 22313 CK + H 2313 | FRB 12.5/140 FRB 10/140 FRB 12.5/140 FRB 10/140 | 2 1 2 1 | FS 260 |
| 60 | 2 ⅝ | 130 | 90 | 185 | 95 | 32 | 260 | 320 | 20 | SN 614 | 1314 K + H 314 2314 K + H 2314 21314 K + H 314 22314 CK + H 2314 | FRB 13/150 FRB 10/150 FRB 13/150 FRB 10/150 | 2 1 2 1 | FS 260 |
| 65 | 2 ½ | 140 | 100 | 195 | 100 | 35 | 290 | 345 | 20 | SN 615 | 1315 K + H 315 2315 K + H 2315 21315 K + H 315 22315 CK + H 2315 | FRB 14/160 FRB 10/160 FRB 14/160 FRB 10/160 | 2 1 2 1 | FS 260 |

Eye bolts for easy handling (from size 528 / 228 / 624 / 324).

SN-Series Plummer Blocks

Series SN 600 for bearings with Adapter Sleeve

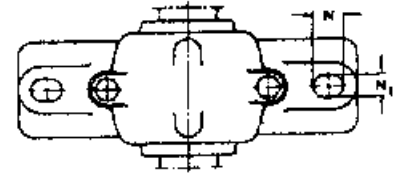
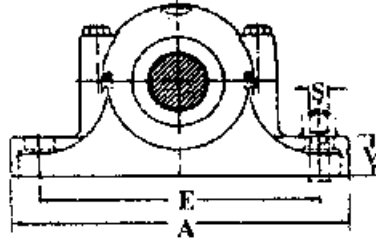
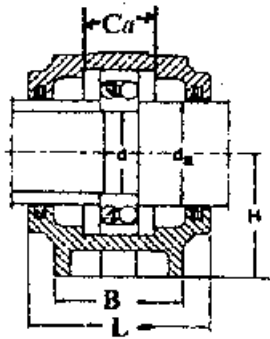


| SHAFT DIA | | Housing Dimensions (mm) | | | | | | | | Housing Designation | Bearing with Adapter Sleeve Designation | Locating ring (s) (to be ordered separately) Designations | Qty. | Felt Strip (2 per housing) Designation |
|----------------|----|-------------------------|----------------|-----|----------------|----------------|-----|-----|----|---------------------|---|---|------------------|--|
| d ₁ | | A | A ₁ | H | H ₁ | H ₂ | J | L | G | | | | | |
| mm | in | | | | | | | | | | | | | |
| 70 | 2¾ | 145 | 100 | 210 | 112 | 35 | 290 | 345 | 20 | SN 616 | 1316 K + H 316 2316 K + H 2316 21316 K + H 316 22316 CK + H 2316 | FRB 14.5/170 FRB 10/170 FRB 14.5/170 FRB 10/170 | 2 1 2 1 | FS 330 |
| 75 | 3 | 155 | 110 | 215 | 112 | 40 | 320 | 380 | 24 | SN 617 | 1317 K + H 317 2317 K + H 2317 21317 K + H 317 22317 CK + H 2317 | FRB 14.5/180 FRB 10/180 FRB 14.5/180 FRB 10/180 | 2 1 2 1 | FS 330 |
| 80 | 3⅙ | 160 | 110 | 220 | 112 | 40 | 320 | 380 | 24 | SN 618 | 1318 K + H 318 2318 K + H 2318 21318 K + H 318 22318 CK + H 2318 | FRB 15.5/190 FRB 10/190 FRB 15.5/190 FRB 10/190 | 2 1 2 1 | FS 330 |
| 85 | 3¼ | 170 | 120 | 240 | 125 | 45 | 350 | 410 | 24 | SN 619 | 1319 K + H 319 2319 K + H 2319 21319 K + H 319 22319 CK + H 2319 | FRB 16/200 FRB 10/200 FRB 16/200 FRB 10/200 | 2 1 2 1 | FS 330 |
| 90 | 3½ | 175 | 120 | 270 | 140 | 45 | 350 | 410 | 24 | SN 620 | 1320 K + H 320 2320 K + H 2320 21320 K + H 320 22320 CK + H 2320 | FRB 18/215 FRB 10/215 FRB 18/215 FRB 10/215 | 2 1 2 1 | FS 370 |
| 100 | 4 | 190 | 130 | 295 | 150 | 50 | 390 | 450 | 24 | SN 622 | 20322 K + H 322 21322 K + H 322 22322 CK + H 2322 | FRB 20/240 FRB 20/240 FRB 10/240 | 2 2 1 | FS 370 |
| 110 | 4¼ | 200 | 160 | 320 | 160 | 60 | 450 | 530 | 30 | SN 624 | 20324 K + H 3124 22324 CK + H 2324 | FRB20.5/260 FRB 10/260 | 2 1 | FS 460 |
| 115 | 4½ | 210 | 160 | 345 | 170 | 60 | 470 | 550 | 30 | SN 626 | 20326 K + H 3126 22326 CK + H 2326 | FRB 22.5/280 FRB 10/280 | 2 1 | FS 460 |
| 125 | 5 | 235 | 170 | 367 | 180 | 65 | 520 | 620 | 30 | SN 628 | 20328 K + H 3128 22328 CK + H 2328 | FRB 25/300 FRB 10/300 | 2 1 | FS 510 |
| 135 | 5¼ | 245 | 180 | 385 | 190 | 65 | 560 | 650 | 30 | SN 630 | 20330 K + H 3130 22330 CK + H 2330 | FRB 26.5/320 FRB 10/320 | 2 1 | FS 510 |
| 140 | 5½ | 255 | 190 | 405 | 200 | 70 | 580 | 680 | 36 | SN 632 | 20332 K + H 3132 22332 CK + H 2332 | FRB 28/340 FRB 10/340 | 2 1 | FS 680 |

Eye bolts for easy handling (from size 528 / 228 / 624 / 324).

SN-Series Plummer Blocks & Housings

Series SN 200 and SN 300 for bearing with cylindrical bore



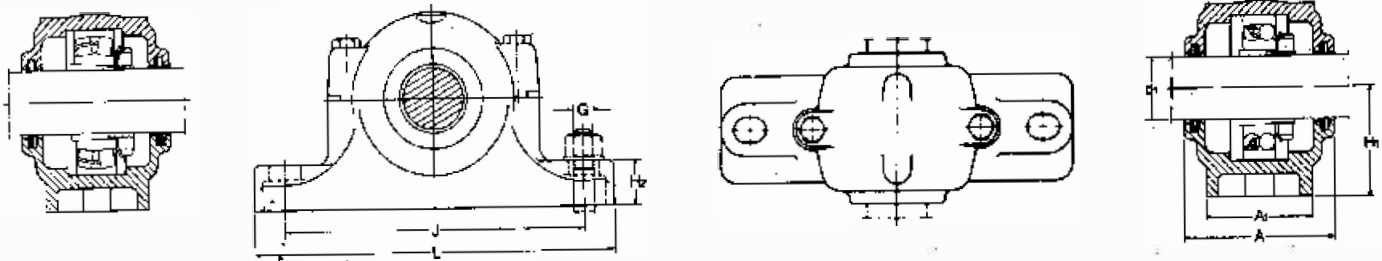
| Housing Design. | SHAFT DIA | | Housing Dimensions (mm) | | | | | | | | | Housing Design. | SHAFT DIA | | Housing Dimensions (mm) | | | | | | | | | | |
|-----------------|-----------|-----|-------------------------|-----|-----|-----|-----|-----|----|----|----|-----------------|-----------|-----|-------------------------|-----|-----|-----|-----|-----|-----|----|----|----|----|
| | d | da | L | H | Ca | A | B | E | V | N | N1 | | S | d | da | L | H | Ca | A | B | E | V | N | N1 | S |
| SN 205 | 25 | 30 | 67 | 40 | 25 | 165 | 46 | 130 | 19 | 20 | 15 | 12 | SN 305 | 25 | 30 | 80 | 50 | 34 | 185 | 52 | 150 | 22 | 20 | 15 | 12 |
| SN 206 | 30 | 35 | 77 | 50 | 30 | 185 | 52 | 150 | 22 | 20 | 15 | 12 | SN 306 | 30 | 35 | 82 | 50 | 37 | 185 | 52 | 150 | 22 | 20 | 15 | 12 |
| SN 207 | 35 | 45 | 82 | 50 | 33 | 185 | 52 | 150 | 22 | 20 | 15 | 12 | SN 307 | 35 | 45 | 90 | 60 | 41 | 205 | 60 | 170 | 25 | 20 | 15 | 12 |
| SN 208 | 40 | 50 | 85 | 60 | 34 | 205 | 60 | 170 | 25 | 20 | 15 | 12 | SN 308 | 40 | 50 | 95 | 60 | 43 | 205 | 60 | 170 | 25 | 20 | 15 | 12 |
| SN 209 | 45 | 55 | 85 | 60 | 31 | 205 | 60 | 170 | 25 | 20 | 15 | 12 | SN309 | 45 | 55 | 105 | 70 | 46 | 255 | 70 | 210 | 28 | 23 | 18 | 16 |
| SN 210 | 50 | 60 | 90 | 60 | 33 | 205 | 60 | 170 | 25 | 20 | 15 | 12 | SN 310 | 50 | 60 | 115 | 70 | 50 | 255 | 70 | 210 | 30 | 23 | 18 | 16 |
| SN 211 | 55 | 65 | 95 | 70 | 33 | 255 | 70 | 210 | 28 | 23 | 18 | 16 | SN 311 | 55 | 65 | 120 | 80 | 53 | 275 | 80 | 230 | 30 | 23 | 18 | 16 |
| SN 212 | 60 | 70 | 105 | 70 | 38 | 255 | 70 | 210 | 30 | 23 | 18 | 16 | SN 312 | 60 | 70 | 125 | 80 | 56 | 280 | 80 | 230 | 30 | 23 | 18 | 16 |
| SN 213 | 65 | 75 | 110 | 80 | 43 | 275 | 80 | 230 | 30 | 23 | 18 | 16 | SN 313 | 65 | 75 | 130 | 95 | 58 | 315 | 90 | 260 | 32 | 27 | 22 | 20 |
| SN 214 | 70 | 80 | 115 | 80 | 41 | 275 | 80 | 230 | 30 | 23 | 18 | 16 | SN 314 | 70 | 80 | 130 | 95 | 61 | 320 | 90 | 260 | 32 | 27 | 22 | 20 |
| SN 215 | 75 | 85 | 115 | 80 | 41 | 280 | 80 | 230 | 30 | 23 | 18 | 16 | SN 315 | 75 | 85 | 140 | 100 | 65 | 345 | 100 | 290 | 35 | 27 | 22 | 20 |
| SN 216 | 80 | 90 | 120 | 95 | 43 | 315 | 90 | 260 | 32 | 27 | 22 | 20 | SN 316 | 80 | 90 | 145 | 112 | 68 | 345 | 100 | 290 | 35 | 27 | 22 | 20 |
| SN 217 | 85 | 95 | 125 | 95 | 46 | 320 | 90 | 260 | 32 | 27 | 22 | 20 | SN 317 | 85 | 95 | 155 | 112 | 70 | 380 | 110 | 320 | 40 | 32 | 26 | 24 |
| SN 218 | 90 | 100 | 145 | 100 | 62 | 345 | 100 | 290 | 35 | 27 | 22 | 20 | SN 318 | 90 | 105 | 160 | 112 | 74 | 380 | 110 | 320 | 40 | 32 | 26 | 24 |
| SN 219 | 95 | 110 | 145 | 112 | 53 | 345 | 100 | 290 | 35 | 27 | 22 | 20 | SN 319 | 95 | 110 | 170 | 125 | 77 | 410 | 120 | 350 | 45 | 32 | 26 | 24 |
| SN 220 | 100 | 115 | 160 | 112 | 70 | 380 | 110 | 320 | 40 | 32 | 26 | 24 | SN 320 | 100 | 115 | 175 | 140 | 83 | 410 | 120 | 350 | 45 | 32 | 26 | 24 |
| SN 222 | 110 | 125 | 175 | 125 | 80 | 410 | 120 | 350 | 45 | 32 | 26 | 24 | SN 322 | 110 | 125 | 190 | 150 | 90 | 450 | 130 | 390 | 50 | 32 | 26 | 24 |
| SN 224 | 120 | 135 | 185 | 140 | 86 | 410 | 120 | 350 | 45 | 32 | 26 | 24 | SN 324 | 120 | 135 | 205 | 160 | 96 | 530 | 160 | 450 | 60 | 42 | 35 | 30 |
| SN 226 | 130 | 145 | 190 | 150 | 90 | 445 | 130 | 380 | 50 | 32 | 26 | 24 | SN 326 | 130 | 150 | 215 | 170 | 103 | 550 | 160 | 470 | 60 | 42 | 35 | 30 |
| SN 228 | 140 | 155 | 205 | 150 | 98 | 500 | 150 | 420 | 50 | 42 | 35 | 30 | SN 328 | 140 | 160 | 235 | 180 | 112 | 620 | 170 | 520 | 65 | 42 | 35 | 30 |
| SN 230 | 150 | 165 | 220 | 160 | 106 | 530 | 160 | 450 | 60 | 42 | 35 | 30 | SN 330 | 150 | 170 | 245 | 190 | 118 | 650 | 180 | 560 | 65 | 42 | 35 | 30 |
| SN 232 | 160 | 175 | 235 | 170 | 114 | 550 | 160 | 470 | 60 | 42 | 35 | 30 | SN 332 | 160 | 180 | 255 | 200 | 124 | 680 | 190 | 580 | 70 | 50 | 42 | 36 |
| SN 234 | 170 | 185 | 235 | 180 | 120 | 620 | 170 | 520 | 65 | 42 | 35 | 30 | | | | | | | | | | | | | |
| SN 236 | 180 | 195 | 245 | 190 | 122 | 650 | 180 | 560 | 65 | 42 | 35 | 30 | | | | | | | | | | | | | |
| SN 238 | 190 | 205 | 255 | 200 | 130 | 680 | 190 | 580 | 70 | 50 | 42 | 36 | | | | | | | | | | | | | |

Eye bolts for easy handling (from size 528 / 228 / 624 / 324).

Standard housing Shaft Diameter is mentioned in da column

SN-Series Plummer Blocks

Series SN 3000 (23000 K for bearing with adapter sleeves)
 Series SN 3100 (23100 K for bearing with adapter sleeves)



| SHAFT DIA d ₁ mm | Housing Dimensions (mm) | | | | | | | Housing Design. | Bearing and Adapter Sleeve Designation | Locating ring (s) (to be ordered separately) | Qty. | Felt Strip (2 per housing) Designation |
|--------------------------------------|-------------------------|----------------|----------------|----------------|-----|-----|----|--------------------|---|--|------|---|
| | A | A ₁ | H ₁ | H ₂ | J | L | G | | | | | |
| 110 | 150 | 110 | 112 | 40 | 320 | 380 | 24 | SN 3024 | 23024 CK + H 3024 | FRB 10/180 | 1 | FS 460 |
| 115 | 160 | 120 | 125 | 45 | 350 | 410 | 24 | SN 3026 | 23026 CK + H 3026 | FRB 10/200 | 1 | FS 460 |
| 125 | 170 | 120 | 140 | 45 | 350 | 410 | 24 | SN 3028 | 23028 CK + H 3028 | FRB 10/210 | 1 | FS 510 |
| 135 | 180 | 130 | 150 | 50 | 380 | 445 | 24 | SN 3030 | 23030 CK + H 3030 | FRB 10/225 | 1 | FS 510 |
| 140 | 190 | 130 | 150 | 50 | 390 | 460 | 24 | SN 3032 | 23032 CK + H 3032 | FRB 10/240 | 1 | FS 680 |
| 150 | 205 | 160 | 160 | 60 | 450 | 530 | 30 | SN 3034 | 23034 CK + H 3034 | FRB 10/260 | 1 | FS 680 |
| 160 | 210 | 160 | 170 | 60 | 470 | 550 | 30 | SN 3036 | 23036 CK + H 3036 | FRB 10/280 | 1 | FS 680 |
| 170 | 220 | 160 | 170 | 60 | 470 | 550 | 30 | SN 3038 | 23038 CK + H 3038 | FRB 10/290 | 1 | FS 680 |
| 180 | 235 | 170 | 180 | 60 | 515 | 610 | 30 | SN 3040 | 23040 CK + H 3040 | FRB 10/310 | 1 | FS 680 |
| 200 | 255 | 190 | 200 | 70 | 580 | 690 | 36 | SN 3044 | 23044 CK + H 3044 | FRB 10/340 | 1 | FS 950 |
| 220 | 265 | 200 | 210 | 75 | 610 | 720 | 36 | SN 3048 | 23048 CK + H 3048 | FRB 10/360 | 1 | FS 950 |
| 240 | 285 | 220 | 240 | 80 | 680 | 820 | 42 | SN 3052 | 23052 CK + H 3052 | FRB 10/400 | 1 | FS 1120 |
| 260 | 295 | 230 | 250 | 80 | 720 | 860 | 42 | SN 3056 | 23056 CK + H 3056 | FRB 10/420 | 1 | FS 1120 |
| 100 | 150 | 110 | 112 | 40 | 320 | 380 | 24 | SN 3122 | 23122 CK + H 3122 | FRB 10/180 | 1 | FS 390 |
| 110 | 160 | 120 | 125 | 45 | 350 | 410 | 24 | SN 3124 | 23124 CK + H 3124 | FRB 10/200 | 1 | FS 460 |
| 115 | 170 | 120 | 140 | 45 | 350 | 410 | 24 | SN 3126 | 23126 CK + H 3126 | FRB 10/210 | 1 | FS 460 |
| 125 | 180 | 130 | 150 | 50 | 380 | 445 | 24 | SN 3128 | 23128 CK + H 3128 | FRB 10/225 | 1 | FS 510 |
| 135 | 200 | 150 | 150 | 50 | 420 | 500 | 30 | SN 3130 | 23130 CK + H 3130 | FRB 10/250 | 1 | FS 510 |
| 140 | 215 | 160 | 160 | 60 | 450 | 530 | 30 | SN 3132 | 23132 CK + H 3132 | FRB 10/270 | 1 | FS 680 |
| 150 | 220 | 160 | 170 | 60 | 470 | 550 | 30 | SN 3134 | 23134 CK + H 3134 | FRB 10/280 | 1 | FS 680 |
| 160 | 230 | 170 | 180 | 70 | 520 | 610 | 30 | SN 3136 | 23136 CK + H 3136 | FRB 10/300 | 1 | FS 680 |
| 170 | 240 | 180 | 190 | 70 | 560 | 650 | 30 | SN 3138 | 23138 CK + H 3138 | FRB 10/320 | 1 | FS 680 |

Eye bolts for easy handling (from size 3032 / 3130).