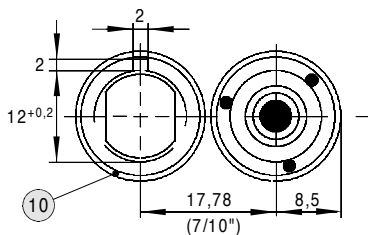


WBT-0244

E



Drilling scheme (original size)

All dimensions in mm, values in brackets: inch

Table of contents

①	Base element	1
②	Internal socket with WBT double prism contact (WBT active spring principle)	1
③	Double-wrap spring lock washer, bronze	1
④	3-hole-counter nut	1
⑤	Internal insulation, red or white PA	1
⑥	Internal dielectric, Teflon*	1
⑦	Space washer, PA, 1 mm	1
⑧	Space washer, PA, 2 mm	1
⑨	Step washer, PA, 3.5 mm	1
⑩	Double step washer with flate hole and tappet, PA, 4.6 mm, red or white	1

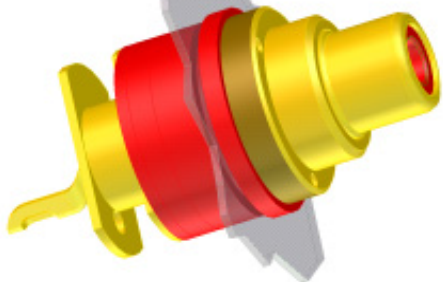
Extent of delivery : 1-10, all parts mounted

Revision date : 29.04.2003

All rights reserved by WBT - Petty patent (DBGM8527598) and int. registered design (M9001263) by WBT.
WBT is a reg. trademark of WBT, Germany.
* Teflon is a reg. trademark of Du Pont.

WBT-0244 Coaxial socket (RCA)

Coaxial socket for cabinet mounting, *soldering version*



- Mechanics**
 - single-segment, low-tolerance contact elements (tol. less than ± 0.05 mm)
 - external socket with solder lugs machined directly from basic element
 - internal socket with double prism contact areas, WBT active spring mechanic with its double-wrap bronze spring lock washer; large spring travel for constant contact pressure even if counterpieces are imprecisely worked
- Materials**
 - external socket made of highly ductile "OFC" copper alloy (52%)
 - internal socket made of pure E-Cu (99,996%)
 - internal insulating material: moulded Teflon* part
 - external insulating material: polyamide 6
- Surfaces**
 - external socket: WBT 24-carat gold-plating
Cu 1.5 μ m, Ni 8 μ m, Au 0.2 μ m
 - internal socket: single-layer direct gold-plating with Au 0.25 μ m
- Operating characteristics** (reliably observed after more than 10^9 connections/disconnections)
 - constant current $I_0 > 40$ A
 - contact resistance $R_0 \leq 0.1$ mohms (loop, measured with WBT-0108)
 - volume resistance $R_3 \leq 0.05$ mohms
 - self-capacitance $C \approx 6.3$ pF
 - insulation resistance $R_{so} > 10^{10}$ ohms
 - surge impedance (projective) $Z = 16$ ohms
- Terminals**
 - soldering version, for cables up to 2.5 mm²
- Mounting**
 - problem-free by hand using the knurled nut
 - for series processing we recommend the use of segering-pliers
 - recommended distance of two socket centers: 17.78 mm = 7/10 inch (standard)