

High End Performance IEC INLET

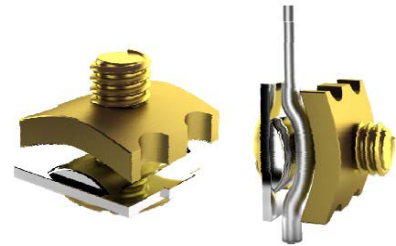


FI-09(G) 24k Gold Plated

FTECH-71041



Regular Clamp

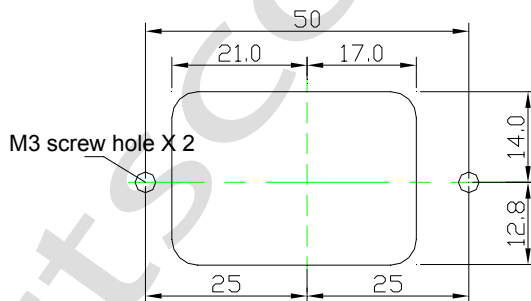


Furutech Patent Pending Clamp

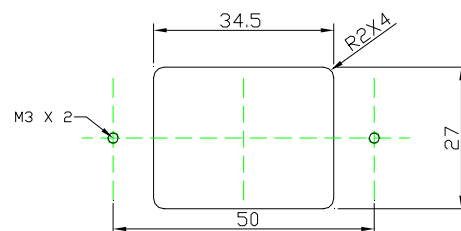
Contact Area Calculated Increase: 17.142%

Type: 2-pole+earth Rating: 15A 250V A.C.

- α (Alpha) Pure copper Conductor
- Material: Nylon/fiberglass
- Specified for wire diameters of 4mm (set screw)
- Dimensions: 60.0mm (W) x 30.2mm (D) x 36.2mm(H)
- Furutech's total attention to detail and build quality extends right down to a specially designed patent-pending pressure plate (see below) that increases the contact area of the Alpha Conductors.



Panel Cut-out Size



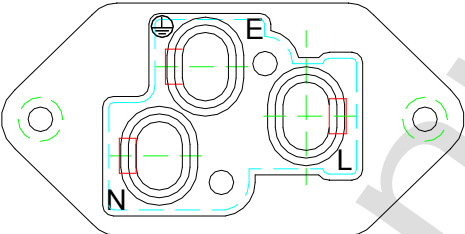
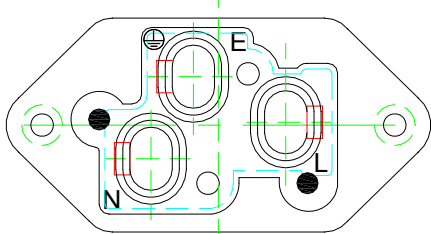
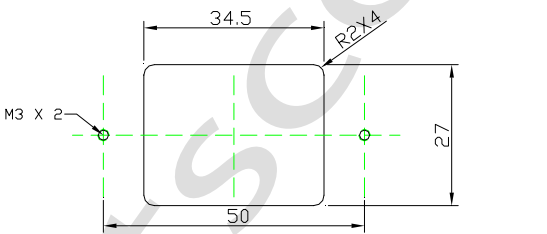
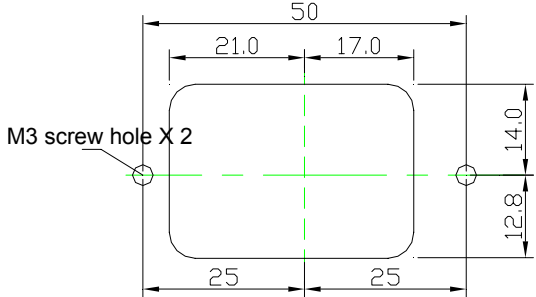
Panel Cut-out Size for Front mounting Use

All metallic parts are treated with the

**FURUTECH α (Alpha) Process (Super Cryogenic & Demagnetizing Treatment.)*

Betterment Information

Date: Sep.,28,2006

Model No.	IEC Inlet FI-09 Series
Alteration Explanation:	<ol style="list-style-type: none"> 1. Additional structural strengthening points. 2. Cut-out size correction. 3. Wire can be fixed with more stability than original version.
Change-over time:	Oct., 30,2006
Original version type image	Betterment type reference image
 <p style="text-align: center;">Back View</p>	 <p style="text-align: center;">Back View</p>
 <p style="text-align: center;">Panel Cut-out Size for Front mounting Use</p>	 <p style="text-align: center;">Panel Cut-out Size</p>