



**FURUTECH**  
PURE TRANSMISSION

**AEx**  
オーディオ銘機賞  
Audio Excellence Award 2008



## High Performance IEC INLET



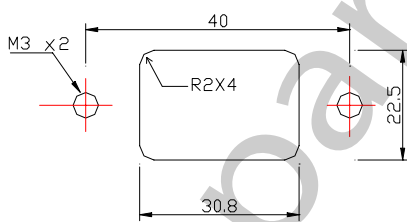
**AC Inlet(R) Rhodium Plated**  
FTECH-65010

**AC Inlet(G) 24k Gold Plated**  
FTECH-65013

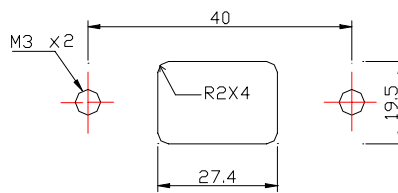
Type: 2-pole+earth 15A 125V/10A 250V A.C.

- $\alpha$  (Alpha) Eutectic (low temperature) cast copper alloy conductor
- PBT and fiberglass housing
- Connections: Soldered
- Dimensions: 49.45mm (W) x 22.0mm (D) x 27.1 mm (H)
- Rated: 15A/125V ,10A/250V

### Panel Cut-out Size for A.C. Inlet



FOR REAR  
MOUNTING USE



FOR FRONT  
MOUNTING USE

All metallic parts are treated with the

*\*FURUTECH  $\alpha$  (Alpha) Process (Super Cryogenic & Demagnetizing Treatment.)*

**FURUTECH CO., LTD.**

**service@furutech.com**

**Make A More Powerful Connection with Furutech!**