



# VACUUM TUBE SOCKET

(VT8 SERIES)

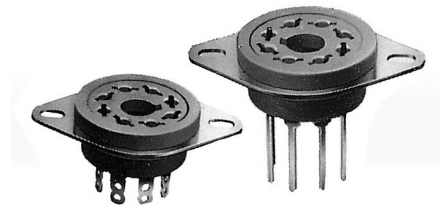
## High Insulated 8 Pin Vacuum Tube Socket

### Features

- With panel saddle mounting
- Easy mount with the saddle of **extruded screw** hole
- Phosphorus bronze terminal pin with solder plating
- Glassfiber filled PPS Insulating material

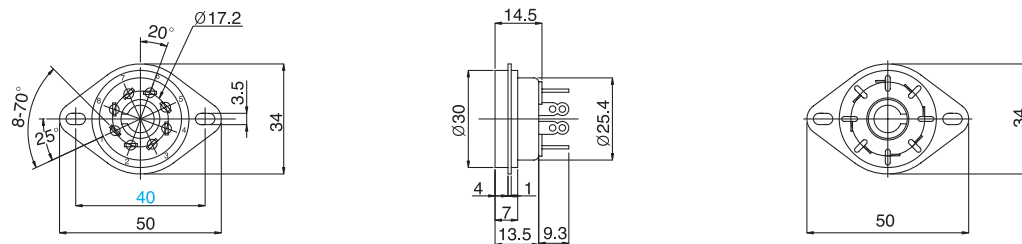
### Applications

- Applicable to all types of electric and electronic equipments using vacuum tube and relay



### Dimensions

#### VT8-ST



#### VT8-PT

#### P.C.B Mounting Hole

