



LANGUAGE





REAPER GRIPS

Providing unshakeable, fatigue-free stability in high-stakes situations, Reaper Grip shooting rests keep rifles of all kinds steady for their operators. Ideal for long-distance hunters, law enforcement snipers and all types of shooters in between, Reaper Grips were designed by SWAT members to hold up to the harsh demands of their everyday work. So when you shoot with a Reaper Grip, you can shoot with confidence.



REAPER GRIP SYSTEM



HEAVY DUTY CONSTRUCTION



SMOOTH PAN / TILT



USER FRIENDLY OFFSET GRIP



PROTECTIVE PADDING



ADJUSTABLE TAPERED GRIP



LOCKING 38 MM TO 76 MM GRIP

MODEL EU-KJ86000
 DIMENSIONS (MM) 174 X 153 X 167
 VISE WIDTH RANGE (MM) 40 - 71
 PAN ROTATION ANGLE 360°
 VERTICAL ROTATION ANGLE 87° DOWN, 21° UP
 MOUNTING 3/8" - 16 THREADED HOLE
 MATERIAL ALUMINUM
 WEIGHT (G) 1134
 INCLUDES CAMERA THREAD ADAPTER



REAPER GRIP DIRECT MOUNT (USE WITH EXISTING BALL HEAD)



HEAVY DUTY CONSTRUCTION



MOUNTS DIRECTLY TO STANDARD HEADS



STANDARD SCREW OR ARCA SWISS



PROTECTIVE PADDING



ADJUSTABLE TAPERED GRIP



LOCKING 38 MM TO 76 MM GRIP

MODEL EU-KJ86006
 DIMENSIONS (MM) 106 X 146 X 128
 VISE WIDTH RANGE (MM) 40 - 71
 PAN ROTATION ANGLE 0°
 VERTICAL ROTATION ANGLE 0°
 MOUNTING 3/8" - 16 THREADED HOLE
 MATERIAL ALUMINUM
 WEIGHT (G) 626
 INCLUDES CAMERA THREAD ADAPTER

REAPER GRIPS



REAPER RAILS

For those wanting the benefits of a ballhead without all the drawbacks, the Reaper Rail offers both vertical and horizontal travel along with cant adjustment. Available with Picatinny or Arca Swiss mounting options, Reaper Rails don't sacrifice an ounce of stability and maintain KJI's signature heavy-duty construction designed to tackle any type of environment.



REAPER RAIL PICATINNY



HEAVY DUTY
CONSTRUCTION



SMOOTH
PAN / TILT



USER FRIENDLY
OFFSET GRIP



PRECISE
LONG RANGE
PRECISION



ADJUST
CANT
ADJUSTMENT



DIRECT
MOUNT
PICATINNY
MOUNT

MODEL EU-KJ86002
 DIMENSIONS (MM) 152 X 139 X 165
 MOUNT TYPE PICATINNY
 RAIL CANT +- 11°
 PAN ROTATION ANGLE 360°
 VERTICAL ROTATION ANGLE 87° DOWN, 21° UP
 MOUNTING MATERIAL 3/8" - 16 THREADED HOLE
 WEIGHT (G) ALUMINUM 894
 INCLUDES CAMERA THREAD ADAPTER



REAPER RAIL ARCA SWISS



HEAVY DUTY
CONSTRUCTION



SMOOTH
PAN / TILT



USER FRIENDLY
OFFSET GRIP



PRECISE
LONG RANGE
PRECISION



ADJUST
CANT
ADJUSTMENT



DIRECT
MOUNT
ARCA SWISS
MOUNT

MODEL EU-KJ86003
 DIMENSIONS (MM) 152 X 139 X 165
 MOUNT TYPE PICATINNY
 RAIL CANT +- 11°
 PAN ROTATION ANGLE 360°
 VERTICAL ROTATION ANGLE 87° DOWN, 21° UP
 MOUNTING MATERIAL 3/8" - 16 THREADED HOLE
 WEIGHT (G) ALUMINUM 894
 INCLUDES CAMERA THREAD ADAPTER



REAPER RAILS



TRIPODS

Executing the perfect shot starts with a steady tripod. Our carbon fiber and aluminum tripods ensure rock-solid stability from high-prone to standing positions with 3-position angle locks, reversible center columns and multiple leg extensions.



K700 TRIPOD HEAVY DUTY

UP TO 183 CM EXTENDED UNDER 67 CM FOLDED	UP TO 11 KG LOAD WEIGHT	HEAVY DUTY LEVER LOCK LEVERS
DURABLE FOAM SOFT GRIPS	3-POSITION ANGLE LOCKS	REVERSIBLE CENTER COLUMN

MODEL	EU-KJ85001
MAX OPERATING HEIGHT (MM)	1829
MIN OPERATING HEIGHT (MM)	273
MAX COLUMN EXTENSION (MM)	380
FOLDED LENGTH (MM)	686
NUMBER OF EXTENSIONS	3
MAX LOAD (KG)	11
LEG LOCK TYPE	LEVER LOCK
MATERIAL	ALUMINUM
WEIGHT (KG)	2,5
INCLUDES	TRIPOD CASE CAMERA THREAD ADAPTER



K800 CF TRIPOD CARBON FIBER

UP TO 162 CM EXTENDED UNDER 51 CM FOLDED	UP TO 9 KG LOAD WEIGHT	HEAVY DUTY LEVER LOCK LEVERS
LIGHTWEIGHT CARBON FIBER	3-POSITION ANGLE LOCKS	REVERSIBLE CENTER COLUMN

MODEL	EU-KJ85002
MAX OPERATING HEIGHT (MM)	1626
MIN OPERATING HEIGHT (MM)	191
MAX COLUMN EXTENSION (MM)	1325
FOLDED LENGTH (MM)	502
NUMBER OF EXTENSIONS	4
MAX LOAD (KG)	9
LEG LOCK TYPE	LEVER LOCK
MATERIAL	CARBON FIBER
WEIGHT (KG)	1,6
INCLUDES	TRIPOD CASE CAMERA THREAD ADAPTER

TRIPODS



AMBUSH

Thanks to the Ambush, box blind hunters no longer have to sacrifice precious floor space in their blind or worry about fatigue from holding their rifles up too long. When locked into place, the Ambush positions your rifle perfectly right above the blind's window ledge and gives shooters, especially youth and disabled hunters, the confidence they need to take precision shots when they matter most.



AMBUSH FULL SYSTEM (KIT INCLUDES REAPER GRIP, AMBUSH SUPPORT ARM, BIPOD)

 HEAVY DUTY CONSTRUCTION	 SMOOTH PAN / TILT	 OFFSET USER FRIENDLY OFFSET GRIP	 MOVE EASILY PICK UP AND MOVE EASILY	 MOUNTS ON WINDOW LEDGE
 PROTECTIVE PADDING	 ADJUSTABLE TAPERED GRIP	 LOCKING 38 MM TO 76 MM GRIP	 ABOVE THE LEDGE FIREARM SITS ABOVE THE LEDGE	 WEIGHT LOCKED LOCKED IN PLACE WHEN SET

REAPER GRIP

ARM & BIPOD

MODEL	EU-KJ85005K
DIMENSIONS (MM)	311 X 106 X 302
WISE WIDTH RANGE (MM)	40 - 71
PAN ROTATION ANGLE	360°
VERTICAL ROTATION ANGLE	87° DOWN, 21° UP
MOUNTING	PLACED ON LEDGE
MATERIAL	ALUMINUM
WEIGHT (G)	1973
INCLUDES	REAPER GRIP AMBUSH SUPPORT ARM BIPOD



AMBUSH SUPPORT ARM

MODEL	EU-KJ85005
DIMENSIONS (MM)	311 X 106 X 86
MOUNTING	3/8" - 16 THREADED HOLE
MATERIAL	ALUMINUM
WEIGHT (G)	553
REQUIRES	REAPER GRIP OR REAPER RAIL
INCLUDES	BIPOD CAMERA THREAD ADAPTER SOCKET HEAD SCREW

AMBUSH



REAPER WITH TRIPOD KITS

ACCESSORIES



KITS AND ACC.

MODEL | EU-KJ85001K

REAPER GRIP K700 TRIPOD KIT

- | | | |
|--|-------------------------|-----------------------------|
| | | |
| HEAVY DUTY CONSTRUCTION | SMOOTH PAN / TILT | USER FRIENDLY OFFSET GRIP |
| | | |
| PROTECTIVE PADDING | ADJUSTABLE TAPERED GRIP | LOCKING 38 MM TO 76 MM GRIP |
| | | |
| UP TO 183 CM EXTENDED UNDER 67 CM FOLDED | UP TO 11 KG LOAD WEIGHT | HEAVY DUTY LEG LOCK LEVERS |
| | | |
| DURABLE FOAM SOFT GRIPS | 3-POSITION ANGLE LOCKS | REVERSIBLE CENTER COLUMN |

MODEL | EU-KJ85002K

REAPER GRIP K800 TRIPOD KIT

- | | | |
|--|-------------------------|-----------------------------|
| | | |
| HEAVY DUTY CONSTRUCTION | SMOOTH PAN / TILT | USER FRIENDLY OFFSET GRIP |
| | | |
| PROTECTIVE PADDING | ADJUSTABLE TAPERED GRIP | LOCKING 38 MM TO 76 MM GRIP |
| | | |
| UP TO 162 CM EXTENDED UNDER 51 CM FOLDED | UP TO 9 KG LOAD WEIGHT | HEAVY DUTY LEG LOCK LEVERS |
| | | |
| LIGHTWEIGHT CARBON FIBER | 3-POSITION ANGLE LOCKS | REVERSIBLE CENTER COLUMN |

MODEL | EU-KJ85003K

REAPER RAIL K700 TRIPOD KIT - PICATINNY

- | | | |
|--|-------------------------|----------------------------|
| | | |
| HEAVY DUTY CONSTRUCTION | SMOOTH PAN / TILT | USER FRIENDLY OFFSET GRIP |
| | | |
| PRECISE LONG RANGE PRECISION | LOCKING CANT ADJUSTMENT | DIRECT PICATINNY MOUNT |
| | | |
| UP TO 183 CM EXTENDED UNDER 67 CM FOLDED | UP TO 11 KG LOAD WEIGHT | HEAVY DUTY LEG LOCK LEVERS |
| | | |
| DURABLE FOAM SOFT GRIPS | 3-POSITION ANGLE LOCKS | REVERSIBLE CENTER COLUMN |

MODEL | EU-KJ85004K

REAPER RAIL K800 TRIPOD KIT - PICATINNY

- | | | |
|--|-------------------------|----------------------------|
| | | |
| HEAVY DUTY CONSTRUCTION | SMOOTH PAN / TILT | USER FRIENDLY OFFSET GRIP |
| | | |
| PRECISE LONG RANGE PRECISION | LOCKING CANT ADJUSTMENT | DIRECT PICATINNY MOUNT |
| | | |
| UP TO 162 CM EXTENDED UNDER 51 CM FOLDED | UP TO 9 KG LOAD WEIGHT | HEAVY DUTY LEG LOCK LEVERS |
| | | |
| LIGHTWEIGHT CARBON FIBER | 3-POSITION ANGLE LOCKS | REVERSIBLE CENTER COLUMN |



DIRECT MOUNT ADAPTER FOR REAPER GRIP

MODEL | EU-KJ89003
 DIMENSIONS (MM) | 51 X 51 X 28,7
 WORKS WITH | REAPER GRIP
 MATERIAL | ALUMINUM
 WEIGHT (G) | 90
 INCLUDES | FOUR MOUNTING SCREWS



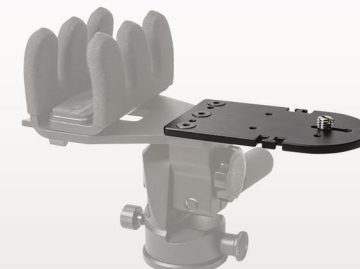
K.I.L. STRAP STABILIZING STRAP

MODEL | EU-KJ89001
 DIMENSIONS (MM) | 25,4 X 1397
 MATERIAL | NYLON
 WEIGHT LIMIT (KG) | 249,5
 WEIGHT (G) | 90
 INCLUDES | CARABINER



ARCATINNY MOUNT ADAPTER (M-LOK®)

MODEL | EU-KJ89005
 DIMENSIONS (MM) | 69 X 28,1 X 17,8
 MATERIAL | ALUMINUM
 MOUNT TYPE | M-LOK® TO PICATINNY & ARCA SWISS
 WEIGHT (G) | 86
 INCLUDES | M-LOK® SCREWS



REAPER RIG ACCESSORY PLATE

MODEL | EU-KJ89002
 DIMENSIONS (MM) | 124 X 68 X 6
 MATERIAL | ALUMINUM
 WEIGHT (G) | 113
 INCLUDES | CAMERA SCREW
 THREE MOUNTING SCREWS



LEVELING HEAD FOR REAPER RIG

MODEL | EU-KJ89000
 DIMENSIONS (MM) | 83,8 X 63,5 X 48,3
 MATERIAL | ALUMINUM
 WEIGHT (G) | 304
 INCLUDES | CAMERA THREAD ADAPTER
 ALLEN KEY



WHEN PRECISION
MATTERS



KJI
94 Iliyantsi Blvd.
1220, Sofia, Bulgaria
+359 2 434 3287
sales@sellmarkeu.net

WWW.KJIPRECISION.COM



Foto: @corysmith936