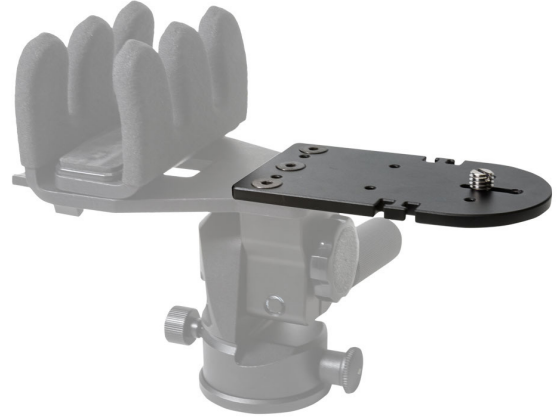




REAPER RIG ACCESSORY PLATE



**HEAVY DUTY
CONSTRUCTION**



EU-KJ89002

**REAPER RIG
ACCESSORY PLATE**



TECHNICAL SPECIFICATIONS

REAPER RIG ACCESSORY PLATE

EU-KJ89002

DIMENSIONS (MM)	124 x 68 x 6
FEATURES	MOUNTS ACTION CAMERA OR SPOTTING SCOPE TO REAPER GRIP. CAN ADD PICATINNY MOUNT FOR IR FLASHLIGHT OR LASER.
FOOT MATERIAL	ALUMINUM
WEIGHT (GR)	120

INCLUDES: CAMERA SCREW, THREE MOUNTING SCREWS

EU-KJ89002