

PASSCODE MONITOR- SETTINGS

The following instructions will outline how to USE and TURN ON or OFF the PASSCODE SECURITY Settings

Your monitor has many unique settings. The following will share how to use the PASSCODE SECURITY settings and as well as share how turn this feature on and off and set your own personal security settings. This is a deterrent feature that when used you it will allow you to engage the motor. If the passcode is not entered correctly the motor will NOT ENGAGE you can still pedal but not eBike features.



STEP 1 – Getting Ready To Ride

a. Press and hold **M (MODE)** Until the screen turns on.

b. If PASSCODE feature is **ON** you will have a **PS** with **0000**. Show on your screen

-the first **0** will be blinking and you need to enter your code (if established)

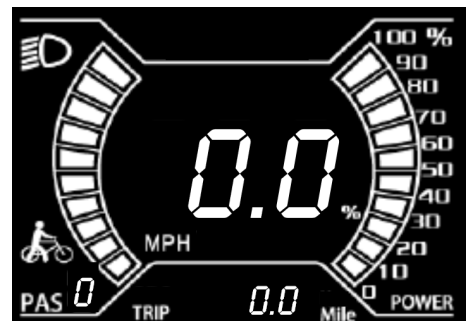
The MANUFACTURE preset code is **0000**



-**USE the + -** to scroll to find the correct number

-**Press the M (MODE)** button to scroll thru 4 digits left to right

-Once you have entered your unique code (how to set up is further in document) or entered the Manufacturer code **press and hold M button to move you to the RIDE READY SCREEN**



You are ready to ride!

IF YOU WANT TO SET A CUSTOM CODE or TURN OFF this Feature Please follow

The following will show you how to create UP TO 2 Custom Pass Codes or to turn off this feature.

Please let us know if you have any questions.

CS@BIKE.com or 1-877-755-2453(BIKE)



PASSCODE MONITOR- SETTINGS

Quick Guide For Turning Pass Code Settings OFF

DEFAULT CODE is 0000

1. Make sure display is ON and is in either AVG or MAX screen setting
2. Press and hold the “UP/+” and “DOWN/-” buttons on the HMI remote for 2 seconds to enter the settings function
3. Press and hold the “UP/+” and “DOWN/-” buttons on the HMI remote for 2 seconds to enter the pass code function
4. Press the “UP/+” button on the HMI remote to go to “n” to turn the function off.
5. Press M (MODE) Button 2X to get to RIDE READY SCREEN



CS@BIKE.com or 1-877-755-2453(BIKE)



PASSCODE MONITOR-

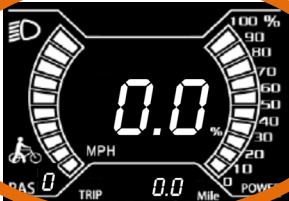
Setting Custom Code or Turning ON/OFF

The following instructions will outline how to SET a PASSCODE or Turn ON/OFF

You must get to the

RIDE READY SCREEN.

To learn how to do this reference the earlier page.



STEP 1 Press and hold + - (UP/Down)

Simultaneously for 2-4 seconds until screen flashes and goes to setting interface.

You will know you are in setting interface when your screen changes to 27.5 inch

In this setting you have 4 settings-

See Monitor Settings for more information



STEP 2 REPEAT Press and hold + - (UP/Down)

Simultaneously for 2-4 seconds until screen flashes and goes to setting interface.

You will know you are in PASSCODES setting interface if you see a "y" or "n".



Select your desired option (use + - to toggle or M to select)

-y for using PASSCODES

-n for turning off –If you SELECT NO and you do not want to use the PASSCODE feature then **PRESS M x 1** and you will go back to the main set up screen. **PRESS M x1** again and you will go to the **RIDE READY SCREEN**



PRESS M x 1

PRESS M x 1



If you select "y" YES for using PASSCODES, please follow these instructions for setting up your unique code. Please use caution when setting up. If you forget your code, you will not be able to ride your bike until we are able to unlock the settings. You have the ability of setting up 2 pass codes with PS0 and PS1.

Setting Code– USE the + - to scroll to select your desired number and the M (MODE) button to move left to right on the digit settings. Once you are finished PRESS and HOLD M To SET pass code or turn off this feature, please press M (MODE) button until screen turns the main set up screen then press M again to get to RIDE READY SCREEN



Toggle + - to set # and PRESS M to switch digit or screen



PRESS M x 1



PRESS M x 1



PRESS M x 1



DENAGO