

alkaramstudio

Spring  
SUMMER  
VOLUME 2

# *This* **SUMMER,**

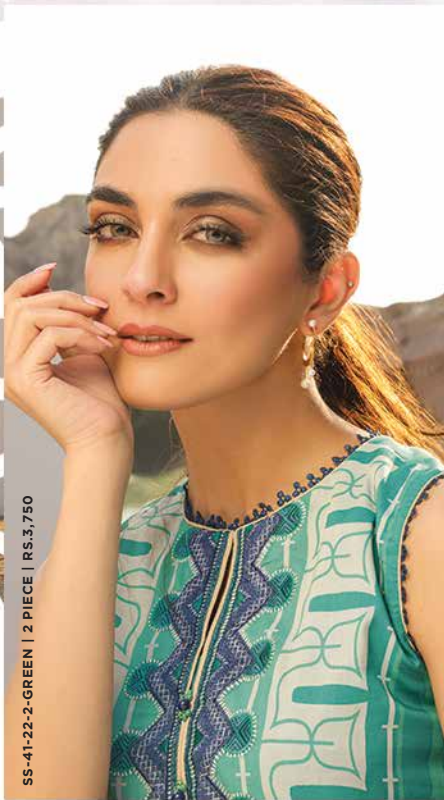
We traverse the space between land and sea. An odyssey, a journey beginning with a soft breeze dancing over lush, green fields. Progressing towards the vast sand dunes of a barren desert. Turning to the silence, stillness and majestic depths of the mountains. Culminating at the wide expanse of powdery sand, pebbles and sea shells. With the ebb and flow of cresting waves presenting a sweet symphony lending its magic to the experience.

Alkaram presents its ***Spring Summer '22*** Unstitched Collection. A visual story taking you from day to night through verdant landscapes to rocky mountains. Featuring a stellar mix of alluring prints, a dazzling colour palette and soft and durable fabric.





DAYBREAK



SS-41-22-2-GREEN | 2 PIECE | RS.3,750

MATCHLESS BEAUTY



S  
P  
R  
I  
N  
G



SS-4,1-22-2-WHITE | 3 PIECE | RS.4,250



SS-36-1-22-2-BLUE | 2 PIECE | RS.2,750







SS-47-22-2-LIGHT BLUE | 2 PIECE | RS. 3,450



A NEW  
DAWN



SS-01-22-2-BLUE | 3 PIECE | RS.5,450



MORNING



LIGHT



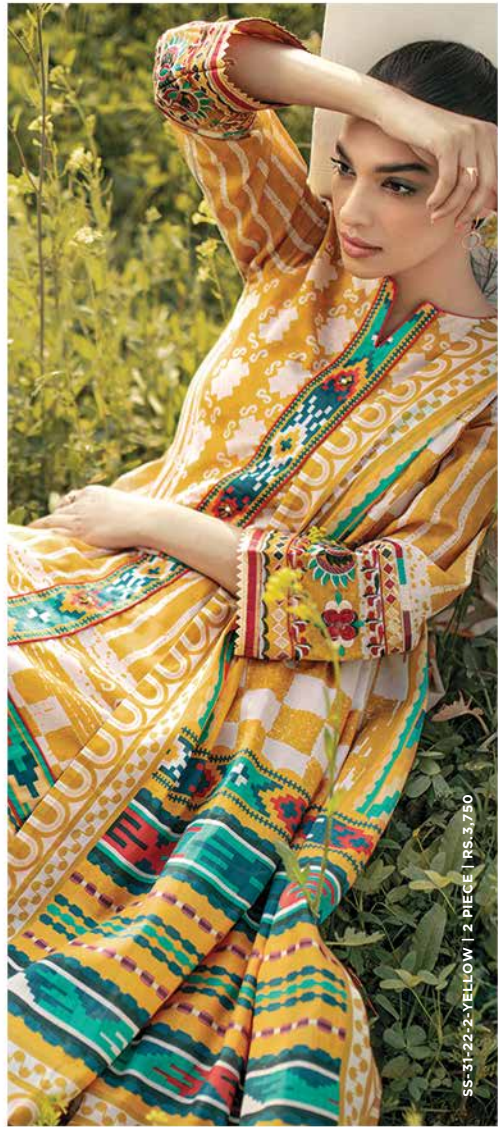
SS-8.1-A-22-2-BEIGE | 3 PIECE | RS. 4,250



SS-14-A-22-2-BEIGE | 3 PIECE | RS. 4,950

SS-42.1-22-2-GREEN | 2 PIECE | RS.3,250





SS-31-22-2-YELLOW | 2 PIECE | RS. 3,750





T H E W A Y F O R W A R D





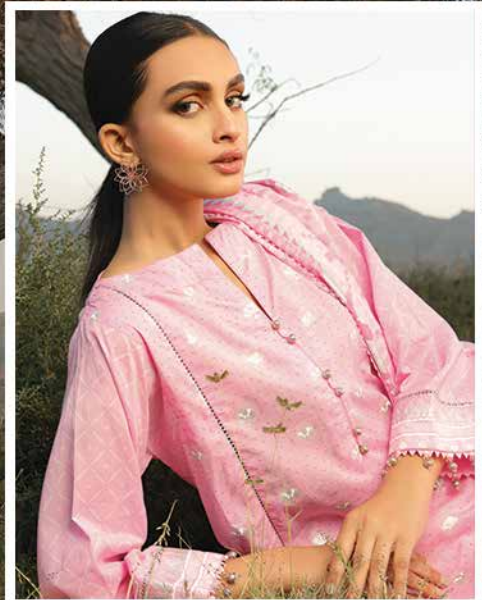
SS-24.1-22-2-PURPLE | 3 PIECE | RS. 4,750





SS-22-22-2-NAVY BLUE | 3 PIECE | RS. 4,950





S U M M E R   R O S E

SS-43.1-22-2-PINK | 2 PIECE | RS. 2,850



A vertical photograph of a tree trunk in a forest. The tree trunk is dark and runs vertically down the left side of the frame. The background is filled with green foliage and trees. In the upper center, a bright sun is partially obscured by the branches, creating a rainbow-like lens flare that extends downwards. The overall lighting is soft and natural, suggesting a late afternoon or early morning setting.

# ***THE WIND***

*blows with incredible ferocity. Its sound a dull roar, competing with the resounding crashing of the waves. We have come to the intersection where land and water meet.*

*Dry land softens into a space where it becomes one with water, time and again. The water itself leaving little trinkets like seashells and pebbles; a gift to the land dwellers.*





SS-301-22-2-CREAM | 3 PIECE | RS. 3,950



SS-40-22-2-LIME GREEN | 2 PIECE | RS. 3,450



SS-11-A-22-2-LIME GREEN | 3 PIECE | RS. 5,450





SS-41-22-2-RUST | 2 PIECE | RS.3,750



SS-40-22-NAVY BLUE | 2 PIECE | RS. 3,450



A HINT  
OF GOLD



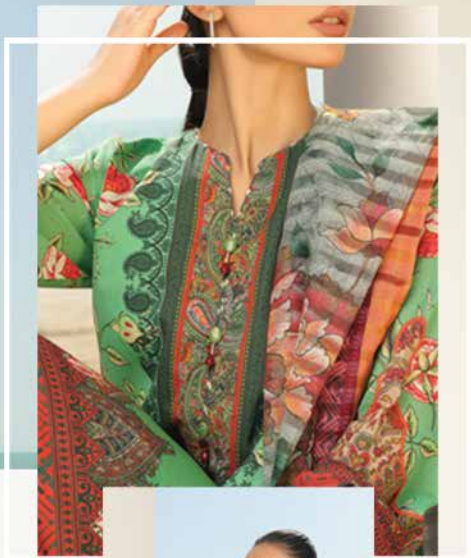


SS-401-22-2-GREEN | 2 PIECE | RS. 3,450



SS-18.1-22-2-GREEN | 3 PIECE | RS. 3,850





SS-26-22-5-GREEN | 3 PIECE | PG. 4/360



SS-121-22-2-GREEN | 3 PIECE | RS. 4,450

ENCHANTING



ENCHANTING







SS-81-1A-22-2-PINK | 3 PIECE | RS. 4,250



SS-291-22-2-PEACH | 3 PIECE | RS. 3,850

THE DELICATE  
FEMININITY OF  
PALE PINK



L  
A  
V  
E  
N  
D  
E  
R  
  
D  
R  
E  
A  
M



SS-18-1-22-2-LILAC | 3 PIECE | RS. 3,850





SS-43,1-22-2-BLUE | 2 PIECE | RS. 2,850





SS-16-22-2-GREY | 2 PIECE | RS. 3,950

**SOFT** *powdery sand gathered together, shifts in shape with every gust of wind. The sun paints the entire scenery golden. We stand amidst the rise and fall of the dusty dunes of a desert. Vast and infinite.*







SS-29-22-2-GREY | 3 PIECE | RS. 5,450





A photograph of two women standing on a beach at sunset. The woman on the left is wearing a bright yellow kurta and white dhoti with a white shawl draped over her shoulders. The woman on the right is wearing a red and orange patterned kurta and matching dhoti with a red and orange shawl. They are both looking towards the left. The background shows the ocean, a sandy beach, and mountains under a warm, golden sky.

# Spiritual Awakening

Surrender yourself to the magic of  
sunshine on your skin and waves  
lapping at your feet.

Embrace the change



SS-24.1-22-2-MAROON | 3 PIECE | RS. 4,750





SS-15.1-22-2-PINK | 3 PIECE | RS. 3,850



SS-14.1-22-2-PINK | 3 PIECE | RS. 5,250





SS-08-A-22-2-MAROON | 3 PIECE | RS. 5,950



SS-36-22-2-PINK | 2 PIECE | RS. 3,050



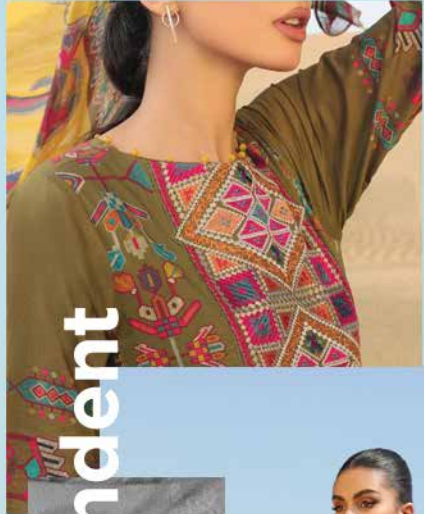
The fusion of understated elegance and quintessential glamour





SS-14-22-2-YELLOW | 3 PIECE | RS. 4,450





SS-09-22-2-GREEN | 2 PIECE | RS. 4,950



# Resplendent





SS-33.1-22-2-MULTI | 3 PIECE | RS. 3,450





SS-31-22-2-BLACK | 3 PIECE | RS. 3,750







*A unique mélange of  
modernity and tradition*



SS-2.1A-22-2-BLUE | 3 PIECE | RS. 5,950



SS-14-22-2-GREY | 3 PIECE | RS. 4,450



**THE WHIMSICAL  
PAISLEY IN  
BRIGHT SUMMER  
BLUES**



SS-15.1-22-2-CREAM | 3 PIECE | RS. 3,850

SS-29.1-22-2-GREEN | 3 PIECE | RS. 3,850





SS-36-22-2-LIGHT BLUE | 2 PIECE | RS. 3,050





SS-02-22-2-TEAL | 3 PIECE | RS. 4,950



EXQ

JUSTICE



SS-36.1-22-2-BLACK | 3 PIECE | RS. 2,750

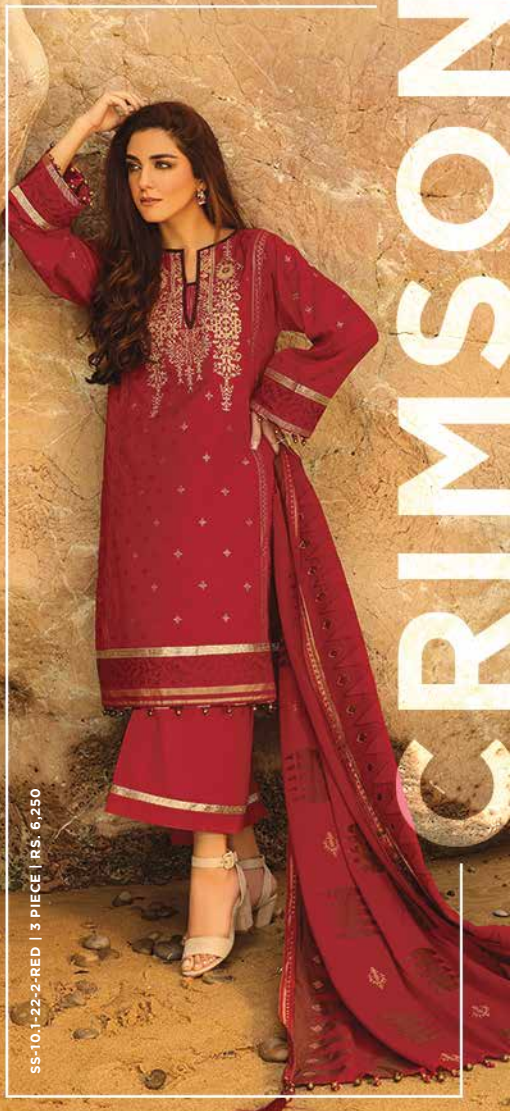
# ***THERE IS A CALMNESS***

*in the atmosphere. A silence that beckons. Imagery that staggers.*

*A wide range of majestic mountains fills our line of vision. Impenetrable and insurmountable. Casting gargantuan shadows.*







SS-101-22-2-RED | 3 PIECE | RS. 6,250

CRIMSON

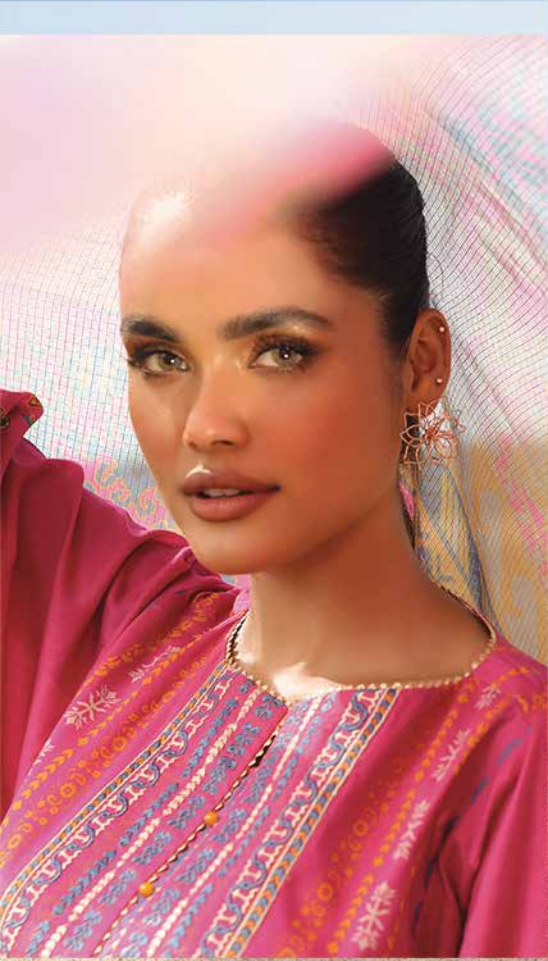


RED REVELATION

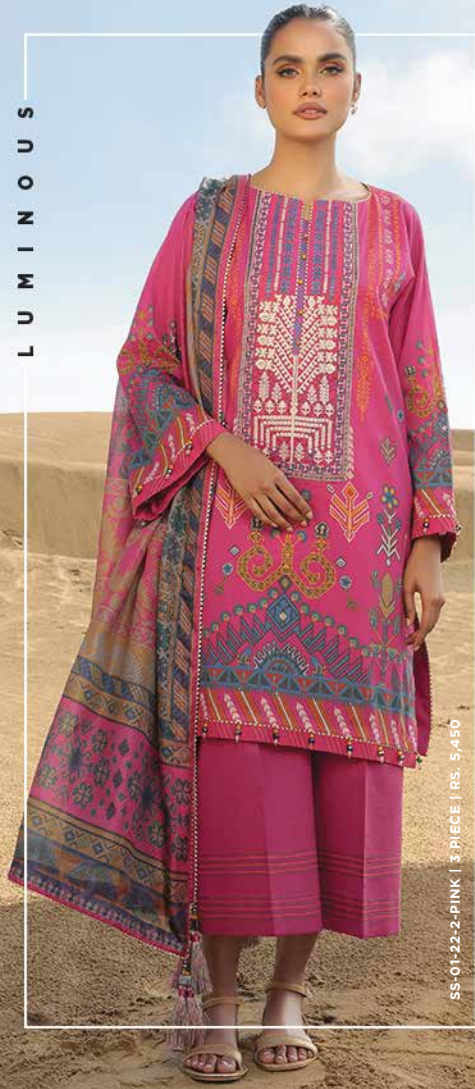


SS-6.1-22-2-RED | 3 PIECE | RS.4,950





L U M I N O U S



SS-01-22-2-PINK | 3 PIECE | RS. 5,450



SS-14-A-22-2-MAROON | 3 PIECE | RS. 4,950



SS-42.1-22-2-MAROON | 3 PIECE | RS. 3,250



CHASING SUNSET



SS-04-22-2-RUST | 3 PIECE | RS. 6,250



SS-12-22-2-GREEN | 3 PIECE | RS. 4,950





SS-03-A-22-2-NAVY BLUE | 3 PIECE | RS. 4,950



MIDNIGHT BLUE





SS-17-22-2-GREEN | 2 PIECE | RS.3,050



OBSIDIAN SYMMETRY







SS-22.1-22-2-BLUE | 3 PIECE | RS. 4,750



**TWILIGHT**



**GLITTERING**



SS-20-22-2-BLACK | 3 PIECE | RS.4,450





# alkaramstudio

## Karachi

- Corn-3 Mall, Clifton Block 6, Bilawal Chowringi. Tel: 021-35148384-5
- Dolmen Mall Clifton, Shop #F-43 1<sup>st</sup> Floor. Tel: 021-35291471-2-3
- Dolmen Mall Tariq Road; 3<sup>rd</sup> Floor. Tel: 021-34310988-9
- Lucky One Mall; F-12, 1<sup>st</sup> Floor. Tel: 021-3718133
- Bahadurabad; Main Bahadurabad Road. Tel: 021-34936332
- Saima Paari Point; Shop No. 5/6, Hyderi. Tel: 021-36640082-3
- The Mall (Factory Outlet); Opposite Aladdin Park, Shop# 1,
- Main Rashid Minhas Road. Tel: 021-34977044
- Atrium Mall (Factory Outlet); Ground Floor, Saddar. Tel: 021-35642691
- Landhi (Factory Outlet); Dawood Chowringi, Tel: 021-35000113-14
- Munawar Chowringi; Opposite Bin-Hashim Super Mart. Tel: 021-34019994

## Lahore

- DHA; Y Block Plot #79, Opp. McDonald's
- Nishat Emporium Mall; Ground Floor, Jauhar Town Opp. Expo Center Tel: 042-32592236
- Packages Mall; Shop No.1049, 1<sup>st</sup> Floor Walton Road
- MM Alam; 23 k College Road Gulberg 2
- Wapda Town 189 Shahrah Nazaria e Pakistan, Block F PIA Housing Scheme Tel: 04235134091

## Islamabad

- Plot No 1-T, F-10 Markaz, Islamabad. Tel: 051-2809701
- The Mall Mall; Shop # 195-196, 1<sup>st</sup> Floor, F-8, Jinnah Avenue Tel: 051-2701127-28
- GIGA Mall, 1<sup>st</sup> Floor, World Trade Center, DHA Phase II. Tel: 051-2725592

## Rawalpindi

- Plot #4, Adam Jee Road, Opposite Pizza Hut, Saddar Cantt, Rawalpindi; Tel: 051-5120296

## Bahawalpur

- Boulevard Mall (Haqqi center), Ground & 1<sup>st</sup> Floor. Tel: 0622-720082

## Gujranwala

- Building No. 117-A, Satellite Town Main Market Tel: 055-3251517, 055-3841517

## Jhelum

- Alkaram Studio, Igra Plaza, Opposite Committee Ghar, Civil Lines Road, Jhelum Tel: 054-4277499

# alkaramfabrics

## Karachi

- 4/84-A, Liaqat Ali Khan Road, Model Colony. Tel: 021-34110301
- C-21, KDA Market, Block-3, Gulshan-e-Iqbal. Tel: 021-34833345

## Lahore

- Plot No # 18 Block - C, Near Moon Market, Gulshan e Ravi Lahore Tel: 0321-4185419
- Shadbagh; Plot No. NE-111-SB-670B. Tel: 042-37608156

## Hyderabad

- Shop No. 5, 6 & 14, Al-Noor Shopping Center, Tilak Chari. Tel: 022-2638512

## Daska

- Shop No. 6 & 7, Mini Mall, College Road, Daska. Tel: 0308-4471760

## Narawal

- Shop No. 2, Circular Road, Zafarwal Chowk, New Gourmet Bakers. Tel: 0542-413758

## Mardan

- The Mall of Mardan; Main Mardan Nowshera Road, Near Bilal Masjid. Tel: 0937-873939

## Muzaffarabad

- Khasra No. 679, Situated at Lower Plate, Neelum Road. Tel: 05822-207355

## Abbottabad

- Silk Plaza Opp. Kashmir Cloth House, Mansehra Road. Tel: 0992400150

## Sargodha

- Burj Huraia Mall, Old Satellite Town, Near Zafarullah Chowk. Tel: 048-3211315

## Sialkot

- Mall of Sialkot; Shop No.105, 1<sup>st</sup> Floor, Plot No. 100 Aziz Shaheed Road, Sialkot Cantt. Tel: 052-4292306
- Shop no 2 V MALL Cantt area, Sialkot 052-4267691

## Faisalabad

- G13 Jaranwala Road near Ali center Faisalabad Tel: 041-8720905-2
- Lyaalpur Galleria Mall; 1<sup>st</sup> Floor, Canal Road, Saed Colony, Nasarullah Khan Town. Tel: 041-5210489

## Sargodha

- University Road Near Modern Shopping Mall Tel: 048-3769071

## Swat

- Alkaram Studio Mangora Road Qambar Market Near Nishat Linen Mangora Swat. Tel: 094688379

## Multan

- Pace n Pace Mall; Bosan Road. Tel: 061-6221501-4
- Gulgasht Colony; Shop No. 4 Building No. 93/A Opp. Post Office, Near Gol Bagh. Tel: 061-6510342

## Rahim Yar Khan

- Building No. 25-A, Near City Park, Model Town. Tel: 068-5877731

## Gujrat

- Hassan Chowk, Kachehri Road. Tel: 053-3510543

## Mirpur

- Ismail Plaza, Plot 63-A, F1, Kottli Road, Mirpur, Azad Kashmir. Tel: 058-27435516

## Peshawar

- Main Jamrood, University Road, Near Mobilink Main Office. Tel: 091-5852724, 091-5711326

## Hyderabad

- Autobahn Road, Latifabad. Tel: 022-3821323
- Boulevard Mall; Ground Floor. Tel: 022-3413128, 022-3411072-73

## Sukkur

- Queen's Road, Sukkur. Tel: 071-5623910-11

## Larkana

- Station Road Larkana. Tel: 0331-2490605

Customer Care Number: 0312-ALKARAM (255-272-6)  
Customer Care Email: care@alkaramstudio.com

For international shows, trade events, PR & media updates stay connected at

[www.facebook.com/alkaramstudio](https://www.facebook.com/alkaramstudio)

Find us at:      

Shop online at [www.alkaramstudio.com](http://www.alkaramstudio.com)



**FREE SHIPPING**

On domestic orders above  
PKR 1,999 and international orders  
above USD 149 or equivalent.