

BYDEMI

CLINIC & ACADEMY

COURSE INFORMATION & PRICES

DISCOUNT APPLIED WHEN 2 COURSES BOOKED TOGETHER
FINANCE AVAILBLE ON ALL COURSES

BY DEMI

CLINIC & ACADEMY

INTRODUCTION

Below is all the information about the courses I offer, if your considering 2 or more than please message and we will offer you a discount.

Stepping into the beauty industry can be daunting but I want to assure you, the minute you walk into the academy I will do my best to make you feel relaxed and comfortable. I want all my students to feel welcome when they train with me and refreshments/lunch will be provided on the days of your course. The brand-new academy is situated in the centre of Aldridge where we are surrounded by cafes & food places. If you have any special dietary requirements, please let us know.

I have trained students with hearing impairments and will do my best to accommodate your needs, so please get in touch if you have any concerns and we can arrange a I-I course if you need to bring an interpreter.

LOCATION

BY DEMI ACADEMY
43 Anchor Road, Aldridge, WS9 8PT

I have 6 spaces at the back of the premises for parking, the entrance is located down the side of beacon buildings WS9 8AA, drive all the way round until you see a sign on the back of the building saying BY DEMI CUSTOMER PARKING. Park anywhere out the back and walk down the alley at the side of the shop.

If you are travelling to the academy and need accommodation I recommend:

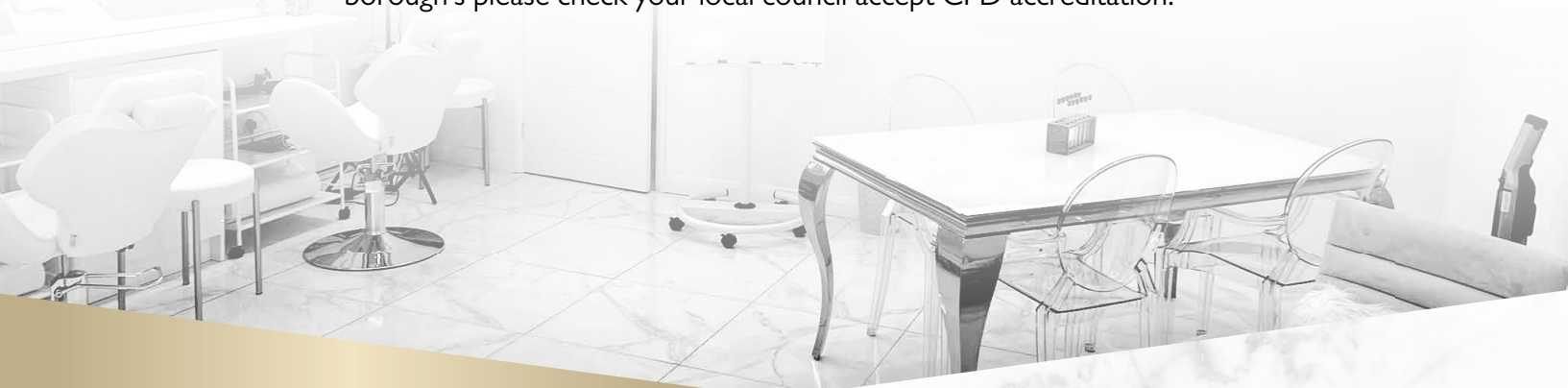
Fairlawns Hotel & Spa
Aldridge
WS9 0NU

Premier Inn
Wolverhampton Street
Walsall
WS2 8LR

Mecure
Barons Court Hotel
Walsall
WS9 9AH

There isn't a strict dress code on the day of courses I prefer all my students to be comfortable. Photos and videos will be taken throughout the day so I do say wear black if possible, we work with many different coloured pigments and although PPE is worn I wouldn't want pigment to ruin clothing etc.

All beginner courses are fully accredited with CPD. If you are in the London borough's please check your local council accept CPD accreditation.



**BEGINNERS MICROBLADING & MACHINE 1-1
(COMBINATION BROWS)**

- 2 DAYS IN ACADEMY
- LIVE DEMONSTRATION FROM DEMI
 - LIVE MODELS FOR STUDENTS
- FULL KIT INCLUDING MACHINE, NEEDLES & PIGMENTS
 - PRE-DRAW EQUIPMENT
 - MAPPING
 - LICENSING & LAWS
 - PIGMENT THEORY
 - COLOUR CORRECTION
 - FITZPATRICK KNOWLEDGE
 - HAIR STROKE PLACEMENTS
 - SHADING TECHNIQUES
 - BLOOD BOURNE PATHOGENS
 - AFTERCARE
 - CONSULTATIONS
 - AETHETICS
 - BRANDING YOUR BUSINESS
 - INSTAGRAM WORKSHOP
 - PHOTOS/VIDEOS
 - & MUCH MORE

NO EXPERIENCE NEEDED FOR TOTAL BEGINNERS

On-going support WhatsApp group

TOTAL £4000 • DEPOSIT £500
BALANCE DUE 7 WORKING DAYS BEFORE £3500

BYDEMI

CLINIC & ACADEMY

LIP BLUSH

- I DAY IN ACADEMY
- LIVE DEMONSTRATION FROM DEMI
 - LIVE MODEL FOR STUDENTS
- FULL KIT INCLUDING MACHINE, NEEDLES & PIGMENTS
 - PRE-DRAW EQUIPMENT
 - LICENSING & LAWS
 - PIGMENT THEORY
- FITZPATRICK KNOWLEDGE
- SHADING TECHNIQUES
- BLOOD BOURNE PATHOGENS
 - AFTERCARE
 - CONSULTATIONS
 - AETHETICS
- INSTAGRAM WORKSHOP
 - PHOTOS & VIDEOS
 - & MUCH MORE

NO EXPERIENCE NEEDED FOR TOTAL BEGINNERS

On-going support WhatsApp group

TOTAL £1500 • DEPOSIT £200
BALANCE DUE 7 WORKING DAYS BEFORE £1300



MICROBLADING CONVERSION TO MACHINE

(Must hold microblading qualification longer than 6 months)

- I DAY IN ACADEMY
- LIVE MODEL FOR STUDENTS
- FULL KIT INCLUDING MACHINE, NEEDLES & PIGMENTS
 - PRE-DRAW EQUIPMENT
 - MAPPING
 - PIGMENT THEORY COLOUR CORRECTION
- FITZPATRICK KNOWLEDGE SHADING TECHNIQUES
 - AFTERCARE
 - CONSULTATIONS
 - AETHETICS
- BRANDING YOUR BUSINESS
- INSTAGRAM WORKSHOP
 - PHOTOS/VIDEOS
 - & MUCH MORE

TOTAL £1700 • DEPOSIT £200
BALANCE DUE 7 WORKING DAYS BEFORE £1500



bydemi

BY DEMI

CLINIC & ACADEMY

MASTERCLASS

(Only available for artists that hold a microblading or machine qualification)

- TOTALLY TAILORED TO YOU
 - IN ACADEMY
- KIT OF MY GO-TO PRODUCTS
 - PIGMENT THEORY
 - COLOUR CORRECTION
 - SHADING TECHNIQUES
 - PHOTOS & VIDEOS
 - 1 OR 2 MODELS
- INSTAGRAM & SOCIAL MEDIA TIPS
- RECEIVE BY DEMI PRODUCTS
- MACHINE AVAILABLE TO PURCHASE & MUCH MORE

TOTAL £1000 • DEPOSIT £200
BALANCE DUE 7 WORKING DAYS BEFORE £800



SKIN BOOSTER COURSE

Requirements: Pre-requisites: NVQ Level 3 Beauty or equivalent, Nurse / Dental Nurse, Doctor, Dentist – or Dental Practitioner with a GDC number, Pharmacist, Micropigmentation with Level 3 A&P, 6 months SPMU experience

- IN ACADEMY TRAINING
 - 2 TRAINERS
 - MANUAL
 - LIVE MODELS
- INJECTION TECHNIQUES
 - CONTRAINDICATIONS
 - NEEDLE TECHNIQUES
- THOROUGH CONSULTATION PROCESS
 - TREATMENT PROTOCOL
 - DIFFERENT BRANDS
 - GOODY BAG
- COVERS BRANDS SUCH AS LEMON BOTTLE, SEVENTY HYAL, PROFHILO, JAULPRO & MORE

TOTAL £550 • DEPOSIT £200
BALANCE DUE 7 WORKING DAYS BEFORE £350

TEETH WHITENING COURSE

- IN ACADEMY
- FULL KIT INCLUDING MACHINE GELS & MORE
 - LIVE MODELS
 - DEMONSTRATION
- INSTAGRAM & SOCIAL MEDIA TIPS
- DENTIST & NON-DENTIST METHOD
 - EU/UK REGULATIONS
 - HEALTH & SAFETY
 - CONSULTATION
- BY DEMI PROMOTIONAL FLYERS
 - ON-GOING SUPPORT
 - & MUCH MORE

TOTAL £1000 • DEPOSIT £200
BALANCE DUE 7 WORKING DAYS BEFORE £800



LEMON BOTTLE FAT DISSOLVING

Requirements: Pre-requisites: NVQ Level 3 Beauty or equivalent, Nurse / Dental Nurse, Doctor, Dentist – or Dental Practitioner with a GDC number, Pharmacist, Micropigmentation with Level 3 A&P, 6 months SPMU experience

- IN ACADEMY TRAINING
 - MANUAL
 - LIVE MODELS
- INJECTION TECHNIQUES
 - CONTRAINDICATIONS
 - NEEDLE TECHNIQUES
- THOROUGH CONSULTATION PROCESS
 - TREATMENT PROTOCOL
- LEMON BOTTLE PRODUCT BREAKDOWN
 - GOODY BAG

TOTAL £200
BALANCE DUE 7 WORKING DAYS BEFORE £200

MICRONEEDLING COURSE

- SKIN ANATOMY & PHYSIOLOGY
- CORRECT SELECTION & USE OF PRODUCTS
- CONSULTATION & CONTRAINDICATIONS
 - HOMECARE & AFTERCARE
 - HEALTH & SAFETY
- OVERVIEW OF MICRONEEDLING
 - TREATMENT PROCEDURE
 - LIVE MODELS
- COVERING NUMEROUS PRODUCTS

TOTAL £450 • DEPOSIT £200
BALANCE DUE 7 WORKING DAYS BEFORE £250



BYDEMI

CLINIC & ACADEMY

BOOKING

If your ready to book a course please message us on Instagram or 07800 772887, deposits are paid upon booking. All deposits are none refundable but are transferrable if you need to move your course (no later than 2 weeks before course start date).

Once your deposit is paid admin will send across a confirmation email will all details and attached working manuals you will need (hard copies of manuals are provided on the day).

If you wish to provide your own models, please let us know, models must pay £25 to the academy before their treatment.

If you have any further questions, please pop us a message and we will try to get back to you as soon as possible.

Thank you for enquiring.

Demi & Admin

xxxx

