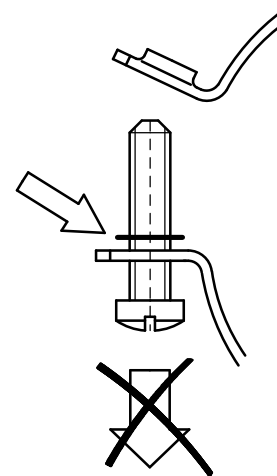


# BIS 2S Clamp (M8/10)

(B 05 25)

for steel pipes 15 - 169 mm

M8/10



## Features and benefits

- two-screw clamp
- screws secured with anti-loss washer
- material: steel
- zinc plated

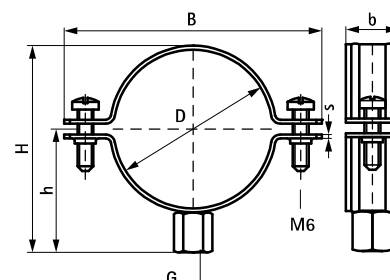


RAL-GZ 655/B  
Cert.Nr. 2010-11

Part No.	D (mm)	D (")	DN (mm)	G	B (mm)	H (mm)	h (mm)	b x s (mm)	Fa,z (N)	RAL	Pack 1
330 3 017	15 - 17	3/8	10	M8/10	51	34	25	20 x 1,25	1,110	RAL <sup>1</sup>	50
330 3 022	18 - 23	1/2	15	M8/10	55	40	27	20 x 1,25	1,110	RAL <sup>1</sup>	50
330 3 030	25 - 28	3/4	20	M8/10	63	48	32	20 x 1,25	1,110	RAL <sup>1</sup>	50
330 3 034	31 - 35	1	25	M8/10	68	52	34	20 x 1,25	1,110	RAL <sup>1</sup>	50
330 3 042	40 - 43	-	-	M8/10	75	60	38	20 x 1,25	1,110	RAL <sup>1</sup>	50
330 3 045	41 - 45	1 1/4	32	M8/10	79	63	36	20 x 1,25	1,240	RAL <sup>1</sup>	50
330 3 051	44 - 49	1 1/2	40	M8/10	83	68	41	20 x 1,25	1,240	RAL <sup>1</sup>	50
330 3 060	50 - 56	-	-	M8/10	92	76	46	20 x 1,50	1,240	RAL <sup>1</sup>	50
330 3 064	58 - 62	2	50	M8/10	99	82	49	20 x 2,00	1,240	RAL <sup>1</sup>	50
330 3 068	62 - 68	-	-	M8/10	102	87	51	20 x 2,00	1,240	RAL <sup>1</sup>	50
330 3 076	75 - 76	2 1/2	65	M8/10	109	94	55	20 x 2,00	1,470	RAL <sup>1</sup>	50
330 3 085	79 - 85	-	-	M8/10	117	102	59	23 x 1,50	1,470	RAL <sup>1</sup>	50
330 3 089	85 - 89	3	80	M8/10	123	108	62	23 x 1,50	1,470	RAL <sup>1</sup>	50
330 3 094	90 - 94	-	-	M8/10	129	113	64	23 x 1,50	1,470	RAL <sup>1</sup>	50
330 3 105	100 - 105	-	-	M8/10	138	123	69	23 x 1,50	1,470	RAL <sup>1</sup>	50
330 3 111	106 - 111	-	-	M8/10	144	128	72	23 x 1,50	1,800	RAL <sup>1</sup>	25
330 3 118	114 - 118	4	100	M8/10	158	138	78	23 x 2,00	1,800	RAL <sup>1</sup>	25
330 3 125	118 - 125	-	-	M8/10	164	146	81	23 x 2,00	1,800	-	25
330 3 144	139 - 144	5	125	M8/10	178	163	89	23 x 2,00	1,800	RAL <sup>1</sup>	25
330 3 169	164 - 169	6	150	M8/10	203	188	101	23 x 2,00	1,800	RAL <sup>1</sup>	25

RAL<sup>1</sup> = tested, certified and monitored by a third party according to RAL-GZ 655/B.

For detailed technical information about our RAL marked products, please see the RAL datasheet in our web catalogue.



## Complementary

- BIS RapidRail® Fixing System
- BIS Fixing Accessories
- BIS Fastenings

## Alternative

- BIS 2S Clamp with Lining (M8, M8/10)