

Atkore Unistrut & Marco Catalogue



Atkore[™]
Unistrut

Atkore[™]
Marco

uPVC Perimeter Trunking Systems

Power & Data solutions by
Atkore Marco



UPVC TRUNKING CONTENTS

Contents	Page Number
Elite 3	210
Elite Compact	216
Elite 60	222
Apollo 3 Comp	228
Apollo 4 Comp	235
Juno	236
Maxi	240
Mini	242
uPVC Trunking Specification	246

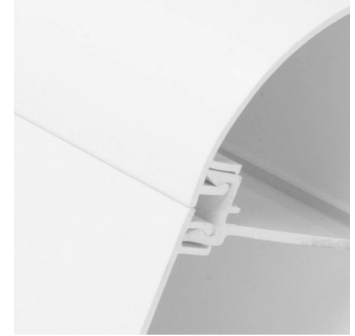


3 Compartment Trunking

175 x 60mm

Atkore Marco Elite 3 trunking system offers an innovative design solution for the growing data-cabling market. At 175 x 60mm, the symmetrical curved design allows for the installation of power and high-density structured cabling systems including CAT5E, CAT6, CAT6A and CAT7 solutions.

Elite Range



Key Features



3 Compartment

Elite 3 has been designed to comply with the latest structured cabling solutions on the market. Top and bottom compartments complement a larger centre compartment which can facilitate socket mounting accessories.



Hygieia Protection

Elite 3 is available with Atkore Marco's Hygieia anti-microbial protection. Defending against 99.9% of harmful bacteria.



175 x 60mm Profile

Elite 3's profile allows for ample data and power cabling to be supplied. The curved design prevents dust trapping and provides a more aesthetically pleasing finish.



DDA & Part M

Elite 3 is also able to comply to both DDA and Part M specifications, using either contrasting centre lids or coloured socket plates.



CAT6, CAT6A & CAT7

Elite 3 meets the latest structured cabling solutions by offering a 50mm bend radius on all Elite accessories.



BIM Download

Elite 3 BIM objects are available as part of the uPVC BIM download on the website.

Elite systems meet and exceed the requirements for BS 6701:2016+A1:2017, BS 4678 Pt 4, BS 7671, ISO 11901-1:2003 and Cenelec (EN 50173 Part 1 / 2, EN 50174-2) standards.

Elite 3

3 Compartment Trunking

Elite 3

Elite 3 is designed to suit all types of installation environments. It is made from the highest quality uPVC compound, providing its signature pure white finish. At 175 x 60mm Elite 3 is able to accommodate CAT6 and CAT6A cables, making it a perfect fit for any modern installation.

Elite 3 is available in three colours, pure white, light grey and charcoal.

CODE	DESCRIPTION	LENGTH	PACK QTY
ME3	Elite 3 - Pure White	3m	2 x 3m
ME3LG	Elite 3 - Light Grey	3m	2 x 3m
ME3CH	Elite 3 - Charcoal	3m	2 x 3m



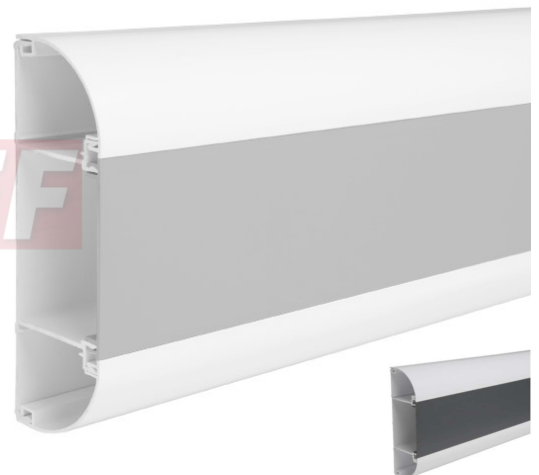
Elite Range

Elite 3 - DDA

Elite trunking is also able to accommodate DDA Part M requirements, via the use of a light grey or charcoal centre lid.



CODE	DESCRIPTION	LENGTH	PACK QTY
ME3LGL	Elite 3 - Pure White with Light Grey Lid	3m	2 x 3m
ME3CHL	Elite 3 - Pure White with Charcoal Lid	3m	2 x 3m

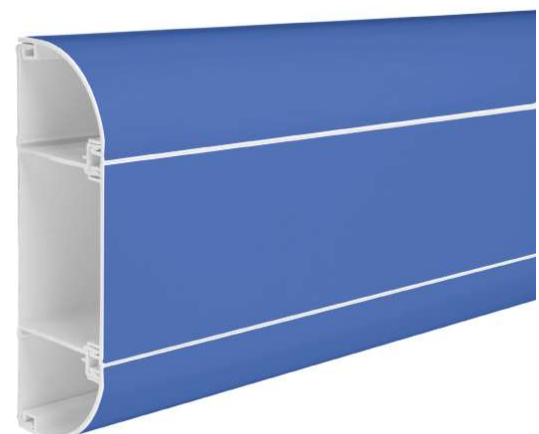


Elite 3 - Hygieia

Elite 3 is available with Hygieia, offering anti-microbial protection against 99.9% of harmful bacteria. The anti-microbial compound forms an integral part of the trunking, meaning there is no loss of performance if the trunking becomes scratched or damaged. All of Elite's additional components are also available with anti-microbial protection.

Elite Hygieia is supplied with a protective blue film for extra protection during transit and installation.

CODE	DESCRIPTION	LENGTH	PACK QTY
ME3AM	Elite 3 - Pure White with Anti-Microbial	3m	2 x 3m
ME3AMLGL	Elite 3 - Light Grey Lid with Anti-Microbial	3m	2 x 3m
ME3AMCHL	Elite 3 - Charcoal Lid Anti-Microbial	3m	2 x 3m



Minimum order quantities apply to Charcoal Anti-Microbial

Illustration purposes only, protective blue film to be removed during installation.

3 Compartment Trunking

Elite Range

Flat Angle



Product Information	
Code	ME3F
Dimensions (mm)	254 x 254 x 62
Pack Qty	1

Available Colours

Two-piece moulded flat angle with built in data guides retaining CAT6, CAT6A and CAT7 compliance. Flat overlaps trunking lids, with no needs for joint covers.

Flat Tee



Product Information	
Code	ME3T
Dimensions (mm)	326 x 253 x 62
Pack Qty	1

Available Colours

Moulded flat tee with two sets of data guides to maintain 50mm bend radius for CAT6, CAT6A and CAT7 compliance. Tee overlaps trunking lids, with no need for joint covers.

Internal Angle



Product Information	
Code	ME3I
Dimensions (mm)	179.5 x 134 x 134*
Pack Qty	1

Available Colours

Moulded internal angle with an adjustable design allowing for a variance of +/- 5° accommodating walls without true 90° bend. Angles have 50mm bend radius to comply with CAT6, CAT6A & CAT7.

* Indicates Height and Width before movement

External Angle



Product Information	
Code	ME3E
Dimensions (mm)	179.5 x 104.5 x 104.5*
Pack Qty	1

Available Colours

Moulded external angle with an adjustable design, allowing for a variance of +/- 5° accommodating walls without a true 90° bend. Angles have 50mm bend radius to comply with CAT6, CAT6A & CAT7.

* Indicates Height and Width before movement

Internal Angle - Fixed 45°



Product Information	
Code	ME3I-135
Pack Qty	1

Available Colours

Pre Fabricated fixed internal angle for Elite 3, designed for use on walls with a 45° in-facing bend. Supplied as individual units and requires 2 joint covers.

Additional joint covers (ME3J x 2) required when fitting.

External Angle - Fixed 45°



Product Information	
Code	ME3E-135
Pack Qty	1

Available Colours

Pre Fabricated fixed external angle for Elite 3, designed for use on walls with a 45° out-facing bend. Supplied as individual units and requires 2 joint covers.

Additional joint covers (ME3J x 2) required when fitting.

Available Colours:

Standard White Light Grey. Add LG to product code Charcoal. Add CH to product code

Elite 3 Accessories

3 Compartment Trunking

End Covers



Product Information	
Code	ME3C
Dimensions (mm)	176.5 x 62 x 12
Pack Qty	2

Available Colours

Curved end covers matching trunking profile, supplied in packs of two.

Joint Covers



Product Information	
Code	ME3J
Width (mm)	179.5 x 62 x 33
Pack Qty	5

Available Colours

Joint covers with easy clip-in mechanism for faster fitting. Supplied in packs of five.

External Angle Screening Divider



Product Information	
Code	ME3SDE
Pack Qty	1

Clip in screening divider for Elite 3 external angles. Meets BS EN 50174-2 for power and data separation.

Steel Strip Screening Divider



Product Information	
Code	ME3SD
Pack Qty	4 x 1.5m

Slide-in screening divider for Elite 3. Meets BS EN 50174-2 for power and data separation. Divider has same prepunched knockouts as internal walls. Supplied in 1.5m.

Take-Off Adapter



Product Information	
Code	ME3TOA
Dimensions (mm)	92 x 62 x 61
Pack Qty	1

Available Colours

Take off adaptor for Atkore Marco Mini trunking. Supports 16 x 16mm, 16 x 25mm, and 25 x 38mm sizes. Can also accept 20 & 25mm PVC conduit.

Elite 3 Accessory Boxes

3 Compartment Trunking

1-Gang Socket Boxes



Product Information	35mm 1-Gang Socket Box	35mm 1-Gang Socket Box, 4 Pillar	25mm 1-Gang Socket Box	25mm 1-Gang Socket Box, 4 Pillar	50mm 1-Gang Socket Box
Code	MTSB1	MTSB1-4	MTSB1-25	MTSB1-25-4	MTSB1-50
Depth (mm)	35	35	25	25	50
No. of Pillars	2	4	2	4	2
Pack Qty	10	10	10	10	10

2-Gang Socket Boxes



Product Information	35mm 2-Gang Socket Box	25mm 2-Gang Socket Box	50mm 2-Gang Socket Box
Code	MTSB2	MTSB2-25	MTSB2-50
Depth (mm)	35	25	50
No. of Pillars	2	2	2
Pack Qty	10	10	10

1 & 2-Gang Socket Frames



Product Information	1-gang socket mounting frame	2-gang socket mounting frame
Code	MTSB1-F	MTSB2-F
Depth (mm)	N/A	N/A
No. of Pillars	4	2
Pack Qty	10	10

Elite 3 Universal Accessories

3 Compartment Trunking

Accessory Spacer



Product Information	
Code	MTLS
Dimensions (mm)	87 x 60
Pack Qty	10

Available Colours

Single unit accessory spacer. Fits on to centre compartment using the same quick snap-on system as centre lid.

RCD/MCB DIN Rail Housing Kit



Product Information	
Code	ME3RCDH
Pack Qty	1

Includes: Hinged Cover, Mounting Frame and Mounting Bracket. Locking mechanism also available.



3 Compartment Trunking

1-Gang Socket Boxes



Product Information	35mm 1-Gang Socket Box	35mm 1-Gang Socket Box, 4 Pillar	25mm 1-Gang Socket Box	25mm 1-Gang Socket Box, 4 Pillar
Code	MTSB1	MTSB1-4	MTSB1-25	MTSB1-25-4
Depth (mm)	35	35	25	25
No. of Pillars	2	4	2	4
Pack Qty	10	10	10	10

2-Gang Socket Boxes



Product Information	35mm 2-Gang Socket Box	25mm 2-Gang Socket Box
Code	MTSB2	MTSB2-25
Depth (mm)	35	25
No. of Pillars	2	2
Pack Qty	10	10

1 & 2-Gang Socket Frames



Product Information	1-gang socket mounting frame	2-gang socket mounting frame
Code	MTSB1-F	MTSB2-F
Depth (mm)	N/A	N/A
No. of Pillars	4	2
Pack Qty	10	10

Universal Accessories

3 Compartment Trunking

Accessory Spacer



Product Information	
Code	MTLS
Dimensions (mm)	87 x 60
Pack Qty	10

Available Colours

Single unit accessory spacer. Fits on to centre compartment using the same quick snap-on system as centre lid.

RCD/MCB DIN Rail Housing Kit



Product Information	
Code	MEC3RCDH
Pack Qty	1

Includes: Hinged Cover, Mounting Frame and Mounting Bracket. Locking mechanism also available.





AMEF

Allied Tube & Conduit ▲ AFC Cable Systems ▲ Heritage Plastics ▲ Unistrut
Unistrut Construction ▲ Cope ▲ US Tray ▲ Calbrite ▲ Calbond ▲ Kaf-Tech
Power-Strut ▲ Calconduit ▲ Razor Ribbon ▲ Calpipe Security ▲ Vergokan ▲ Cii
Columbia-MBF ▲ Eastern Wire + Conduit ▲ ACS/Uni-Fab ▲ Sasco Strut ▲ Marco
FRE Composites ▲ Queen City Plastics ▲ Four Star Industries ▲ Flexicon

Atkore Unistrut & Marco
Delta Point,
Greets Green Road
West Bromwich
B70 9PL

PHONE / +44 (0) 121 580 6300
FAX / +44 (0) 121 580 6370

atkore.com/marco
atkore.com/unistrut

