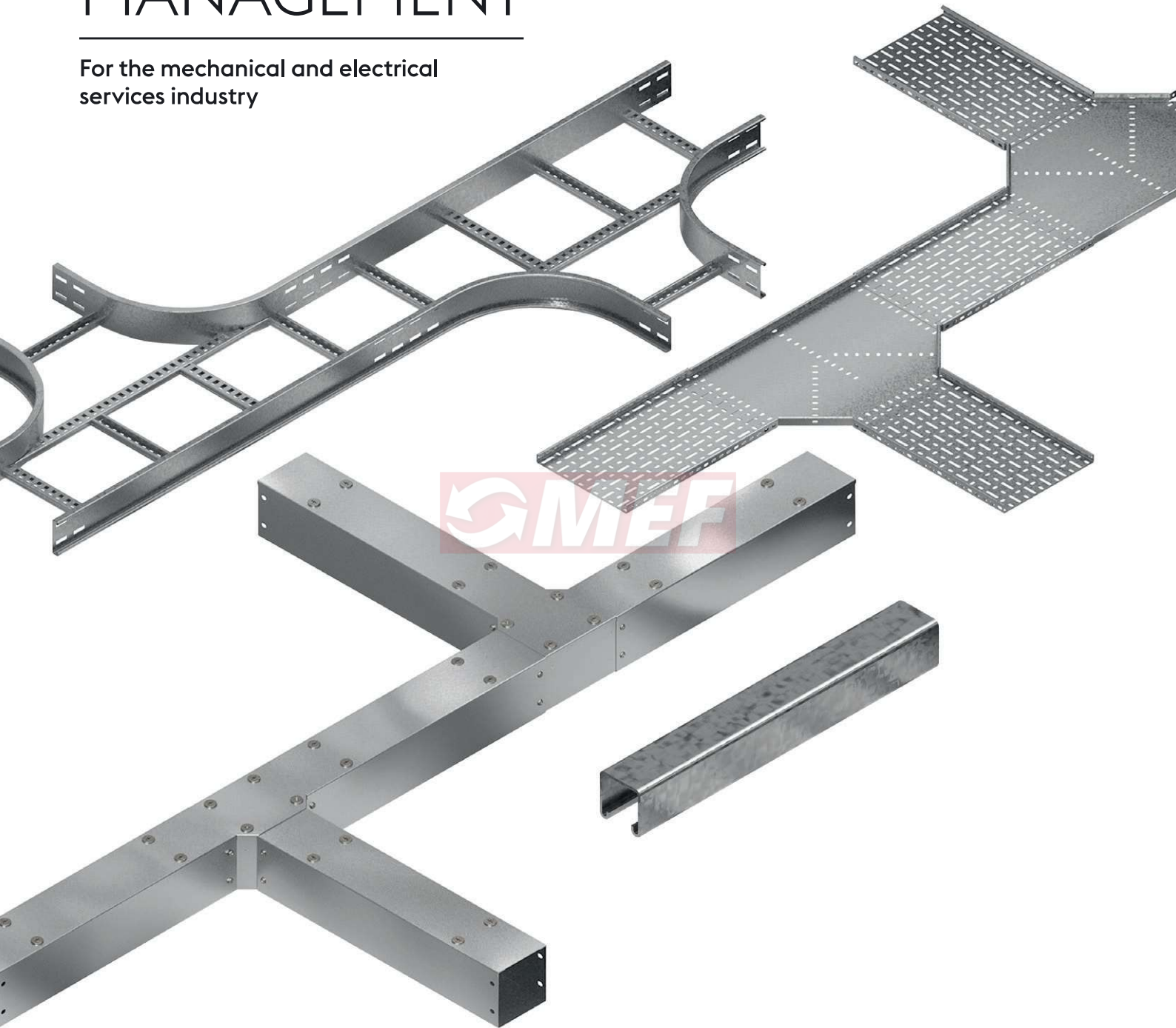
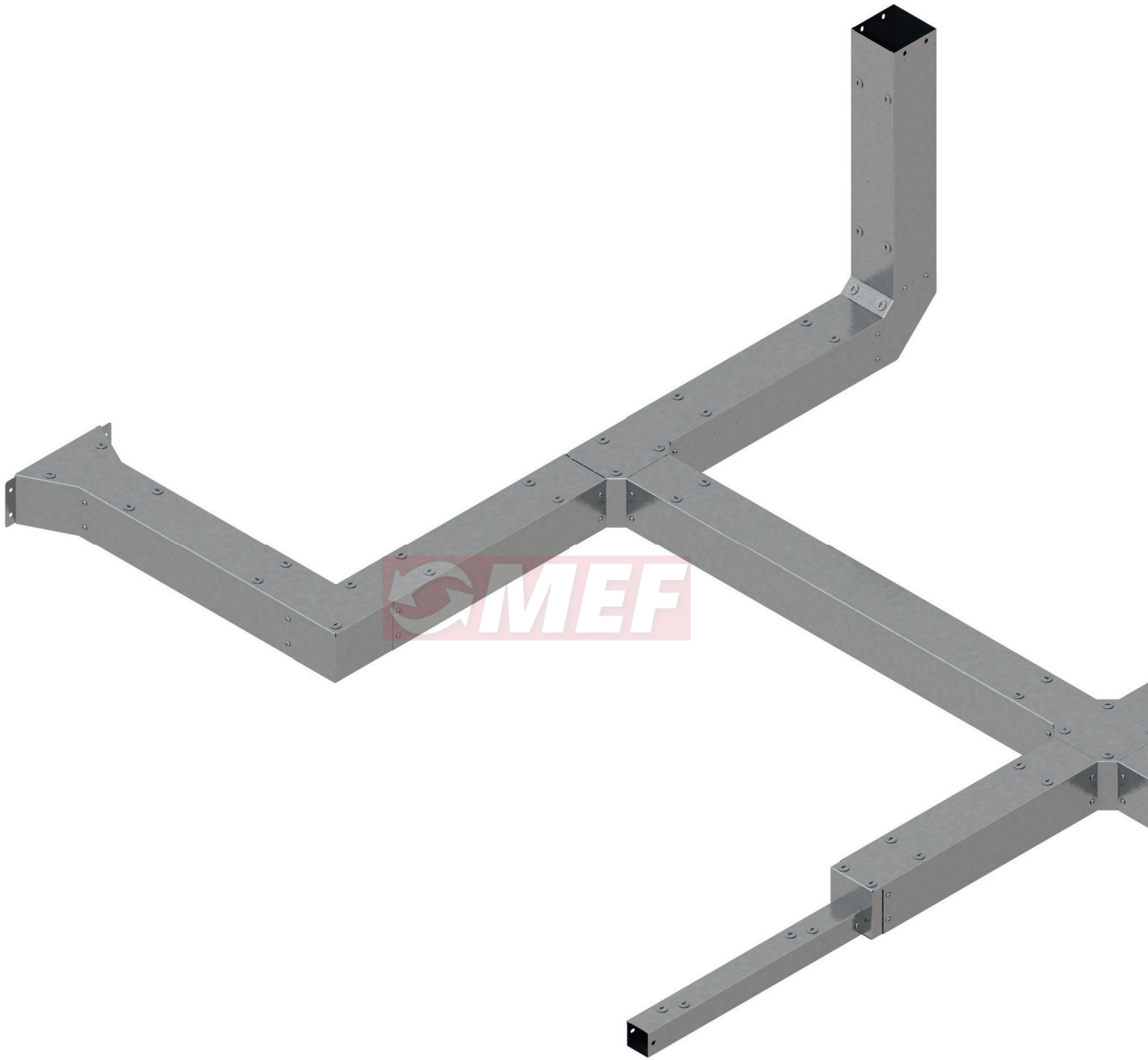


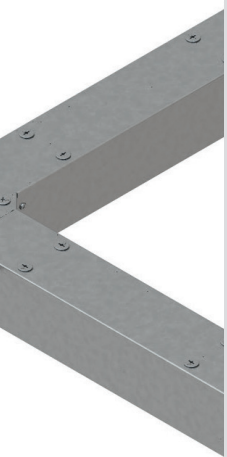


CABLE MANAGEMENT

For the mechanical and electrical
services industry







CABLE TRUNKING SYSTEMS



CABLE TRUNKING SYSTEMS

Metsec cable trunking systems meet the requirements of a demanding electrical installations market. Utilising world class production methods Metsec are able to offer competitive solutions to a high level of service.

The comprehensive Metsec cable trunking ranges consist of standard distribution trunking and lighting trunking.

Standard distribution trunking is available in widths and depths up to 300mm as standard. Lids are attached by turnbuckle fixings, with screw fix and tamper proof fixings also available.

Lighting trunking is available in 50mm x 50mm with straights in various length configurations. This range utilises the standard distribution trunking components but with snap on lids available in pre-galvanised steel or white plastic. This allows flexibility on site when using both systems.

Metsec cable trunking systems are manufactured on sophisticated CNC equipment with a high level of automation for fast moving items. The fully integrated production process ensures Metsec is able to offer a high level of service.



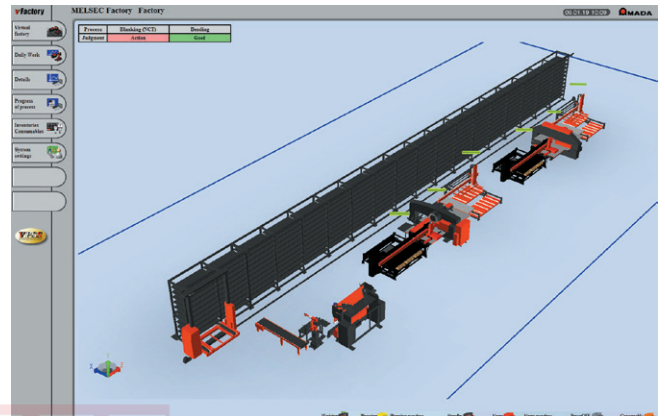
Development and testing

Metsec trunking systems have been developed to meet the requirements of BS EN 50085-1 + A1 and BS EN 50085-2-1 + A1 Cable trunking systems and cable ducting systems for electrical installations.

Comprehensive stock, rapid delivery

Metsec manufactures to lean principles on a Kanban system for stock control. This ensures a high level of delivery performance is achieved to meet the demanding service requirements needed to meet the needs of end users.

Comprehensive stocks are available at all times and Metsec has the ability to turn around non-standard applications quickly due to the sophisticated manufacturing processes employed. The virtual factory software used in the manufacturing process provides a continuous monitoring tool for stocks, work in progress and replenishment times.

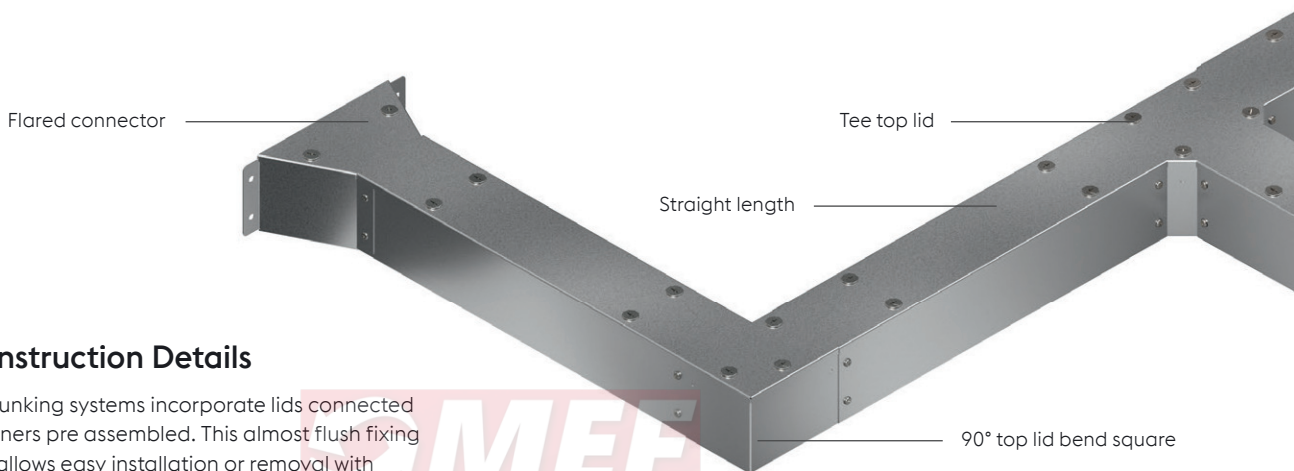


CABLE TRUNKING SYSTEMS

System Configuration and Support

Metsec cable trunking systems are designed as a complete system with a range of easy fit accessories. Integral connectors are included for all fittings as well as fixing bolts. These connectors include pre tapped holes avoiding the need for nuts and washers. Trunking straight lengths come complete with coupler and fixing screws.

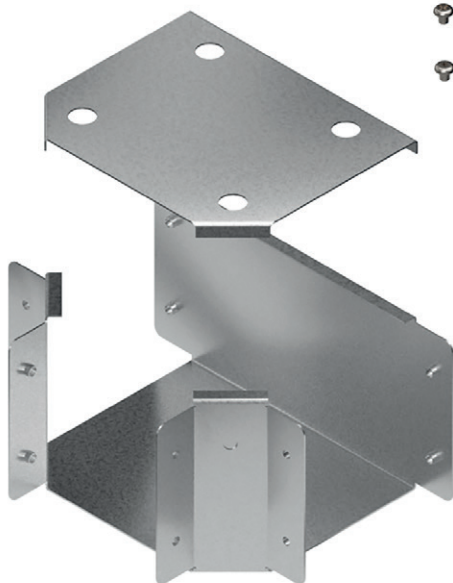
Metsec lighting trunking utilises the same accessories as the standard trunking range, but straight bodies are available in numerous length configurations. Clip on lids are available for this range in both metal galvanised or white plastic.



Technical Construction Details

Metsec standard trunking systems incorporate lids connected by turnbuckle fasteners pre assembled. This almost flush fixing with its cross head allows easy installation or removal with conventional cross/flat blade screwdrivers. Alternative fixings are available to order including screw fix and tamper proof screws.

- Turnbuckle type
e.g. TTT/100/100/PG/G
- Screw fix type – add “S” after the first T
e.g. TSTT/100/100/PG/G
- Tamper proof type – add “M” after the first T
e.g. TMTT/100/100/PG/G



Reducer

Straight length





Materials and Finishes

Materials and finishes available are mild steel pre-galvanised as standard and powder coated to order.

Mild steel pre-galvanised: manufactured from steel complying with BS EN 10346

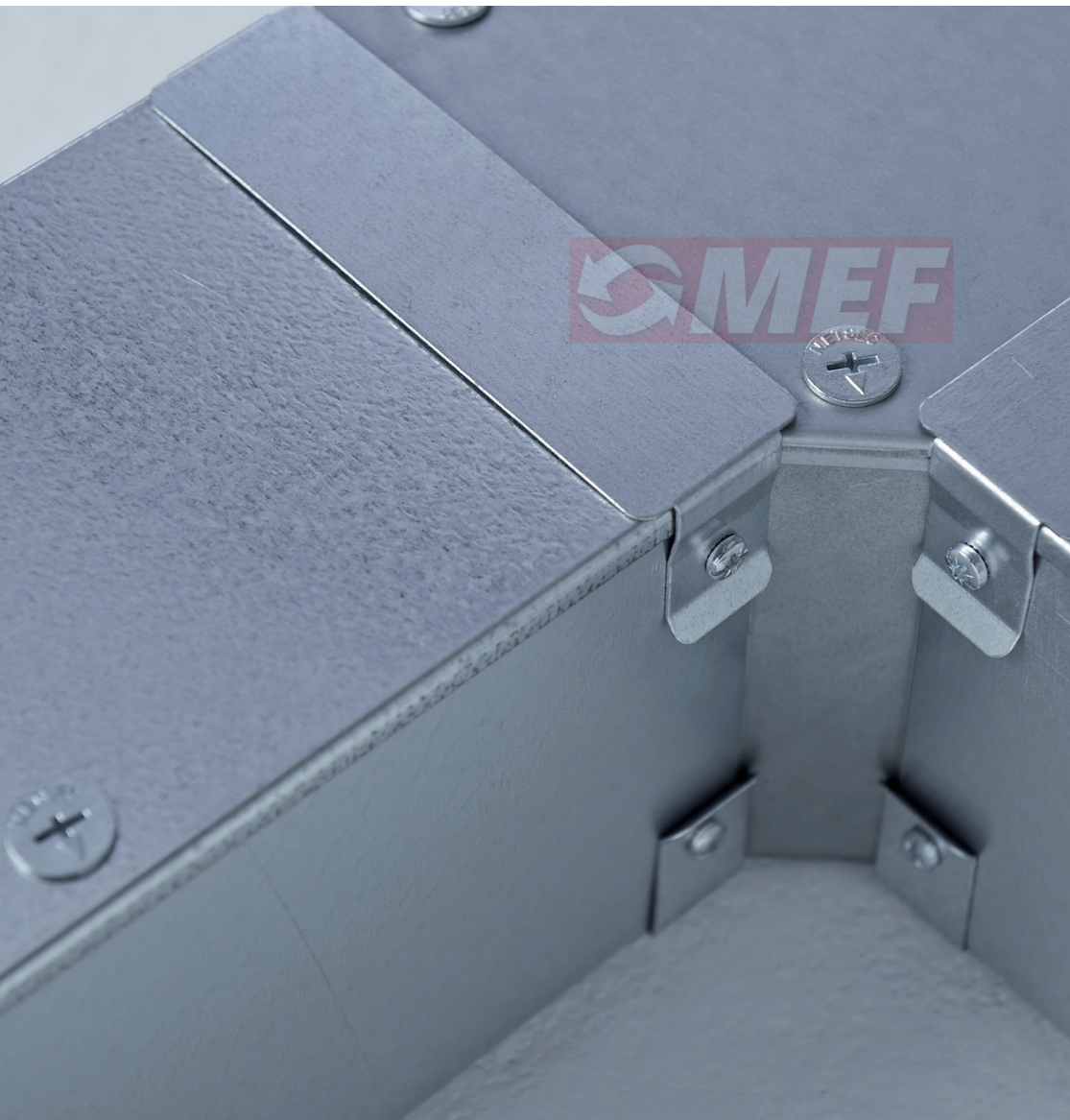
IP4X

Metsec provides product solutions to IP4X enabling us to make a positive contribution to the supply chain by easing lead times, reducing material costs and supporting a sustainable, safe and compliant Cable Management solution.

Currently, British Standards for metal cable containment systems demand that all single insulated, non-sheathed cables be contained in an enclosure that meets either IP4X or IPXXD rating.

IP4X specifies that protection against a 1.0mm probe is required and that there is no requirement

for the protection from the ingress of water. Consequently, IP4X may not be watertight but it protects the cabling from ingress of debris or wire – or generally foreign objects that could all compromise the safety of the cabling within – tested with a 1mm diameter probe that will not penetrate any trunking.



By meeting the IP4X standard, specifiers can give installers and those servicing the installation the confidence that the system meets the requirements of the Wiring Regulations in the most robust way.

Our IP4X rated trunking systems utilise off the shelf clips, without the need for bespoke systems. IP4X kits are available for the vast majority of the Metsec cable trunking range.



Features

- » Off the shelf clips
- » Can be delivered at a standard lead time

Benefits

- » Proven to meet recognised industry standards through rigorous BSI Kitemark™ testing, demonstrating safety, reliability and quality
- » Greater level of ingress protection than IPXXD.
- » Conforms to BS7671 and BS EN 60529 + A2 for IP4X or IPXXD rated enclosures

STANDARDS

Metsec cable trunking systems generally conform to BS EN 50085-1 + A1 Cable trunking systems and cable ducting systems for electrical installations - Part 1: General requirements, and BS EN 50085-2-1 + A1 Cable trunking systems and cable ducting systems for electrical installations - Part 2-1: Cable trunking systems and cable ducting systems intended for mounting on walls and ceilings.

This European Standard specifies requirements and tests for cable trunking systems and cable ducting systems intended for the accommodation, and where necessary, for the electrically protective separation, of insulated conductors, cables and possibly other electrical equipment in electrical and/or communication systems installations. The maximum voltage of these installations is 1000V a.c. and 1500V d.c.

This standard does not apply to conduit systems, cable tray systems, cable ladder systems, power track systems or equipment covered by other standards.

3 Definitions

For the purpose of this European Standard the following definitions apply.

3.3 System component

Part of the system which includes:

- a) trunking length
- b) trunking fitting
- c) fixing device
- d) apparatus mounting device
- e) system accessory

NB: a system does not necessarily include all system components a) to e). Different combinations of system components may be used.

3.4 Trunking length

Main component of a cable trunking system comprising a base with one or more access covers which may be opened or removed.

3.6 Fitting

System component to connect, change direction or terminate trunking lengths.

3.7 Fixing device

System component to secure other system components to the wall, ceiling, floor or other structure.

3.8 Apparatus mounting device

System component to accommodate electrical apparatus, (switches, socket outlets, circuit breakers, telephone outlets, etc.) which can be an integral part of electrical apparatus.

3.9 System accessory

System component which provides a supplementary function.

3.10 Metallic system component

System component which consists of metal only.

3.12 Composite system component

System component comprising both metallic and non-metallic materials.



4 General requirements

Metsec cable trunking systems have been designed and constructed so that, where required, they provide reliable mechanical protection to the insulated conductors, cables and possibly other electrical equipment. Where required the system provides adequate electrical protection.

The system components meet the classifications as detailed/[highlighted](#) in Section 6.

6 Classifications

6.2 According to resistance to impact for installation and application

6.2.4 Metsec cable trunking systems offer impact resistance of 2 J

6.3 According to temperatures as given in Tables 1, 2 and 3



Table 1 – Minimum temperature

Minimum transport and storage temperature °C
-45
-25
-15
-5

Table 2 – Minimum temperature

Minimum installation and application temperature °C
-25
-15
-5
+5
+15

Table 3 – Maximum temperature

Maximum application temperature °C
+60
+90
+105
+120

- 6.4 According to resistance to flame propagation**
6.4.2 Metsec cable trunking systems are non flame propagating.
- 6.5 According to electrical continuity characteristic**
6.5.1 Metsec cable trunking systems have electrical continuity characteristic.
- 6.6 According to electrical insulating characteristic**
6.6.1 Metsec cable trunking is without electrical insulating characteristic.
- 6.7 to degrees of protection provided by enclosure according to BS EN 60529 + A2**
6.7.1 Metsec cable trunking is IP30.
- 6.9 According to system access cover retention**
6.9.2 Metsec cable trunking access cover can only be opened with a tool.
- 6.10 According to electrically protective separation**
6.10.1 Metsec cable trunking system without internal protective partition.
6.101 According to intended installation positions.
6.101.3.1 Surface mounted on wall.
6.101.3.2 Surface mounted on ceiling.
6.103 According to type.
6.103.2 Type 2 cable trunking system – distribution.

7 Marking and Documentation

7.1 Each system component is marked by label. Labels used fully comply with the rubbing test. Boxed items are labelled on the packaging.

8 Dimensions

There are no dimensions requirements.

9 Construction

9.1 Sharp edges

Surfaces of system components which are likely to come into contact with cables during installation are inspected to ensure they shall not cause damage to the cables when installed correctly.

9.4 Mechanical connections

Screwed connections have been designed to withstand the mechanical stresses occurring during installation and normal use and will not cause damage to cables when correctly inserted. Screwed connections are generally isometric threads fully compliant with tests in accordance with 9.4.1 of the standard. Screws intended to be tightened by means of a screwdriver should be to a torque of 2Nm per Table 4 – Torque values for the test of screwed connections.

Mechanical connections intended for re-use other than screwed connections have been tested in accordance with 9.4.2, i.e. fitted and removed 10 times. After the test, there was no damage to impair the further use of the mechanical connection, i.e. turnbuckle connectors.

9.6 Equipotential bonding

9.6.1 Metsec cable trunking systems should not be used for equipotential bonding.

9.7 Access to live parts

9.7.1 Metsec cable trunking systems are designed that when they are installed correctly as in normal use, live parts are not accessible.

9.7.4 knockouts meet the requirements of EN 61032

9.101 Assembling

Metsec system components fit correctly generally using integral couplers with plunged and tapped holes.

10 Mechanical Properties

Metsec cable trunking systems have been tested to verify the classifications stated particularly relating to mechanical strength, impact resistance, system access cover retention, etc.

15 Electromagnetic Compatibility

Metsec cable trunking systems are in normal use, passive in respect of electromagnetic influences (emission and immunity).

NB: When products covered by this standard are installed as part of a wiring installation, the installation may emit or may be influenced by electromagnetic signals. The degree of influence will depend on the nature of the installation within its operating environment and the apparatus connected by the wiring.



STANDARD DISTRIBUTION TRUNKING

Straight Lengths

3m length with lid and coupler

Fixing Options: Turnbuckle type e.g. TSL/100/100/PG3

Screw fix type – add “S” after the first T e.g. TSSL/100/100/PG3

Tamper proof type – add “M” after the first T e.g. TMSL/100/100/PG3



Width mm	50mm Deep	75mm Deep	100mm Deep	150mm Deep	225mm Deep	300mm Deep
50	TSL/050/050/PG3	N/A	N/A	N/A	N/A	N/A
75	TSL/075/050/PG3	TSL/075/075/PG3	N/A	N/A	N/A	N/A
100	TSL/100/050/PG3	TSL/100/075/PG3	TSL/100/100/PG3	N/A	N/A	N/A
150	TSL/150/050/PG3	TSL/150/075/PG3	TSL/150/100/PG3	TSL/150/150/PG3	N/A	N/A
225	TSL/225/050/PG3	TSL/225/075/PG3	TSL/225/100/PG3	TSL/225/150/PG3	TSL/225/225/PG3	N/A
300	TSL/300/050/PG3	TSL/300/075/PG3	TSL/300/100/PG3	TSL/300/150/PG3	TSL/300/225/PG3	TSL/300/300/PG3

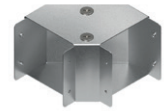
Bends

90° bend with top lid and gusset

Fixing Options: Turnbuckle type e.g. TTB/100/100/PG/G90

Screw fix type – add “S” after the first T e.g. TSTB/100/100/PG/G90

Tamper proof type – add “M” after the first T e.g. TMTB/100/100/PG/G90



Width mm	50mm Deep	75mm Deep	100mm Deep	150mm Deep	225mm Deep	300mm Deep
50	TTB/050/050/PG/G90	N/A	N/A	N/A	N/A	N/A
75	TTB/075/050/PG/G90	TTB/075/075/PG/G90	N/A	N/A	N/A	N/A
100	TTB/100/050/PG/G90	TTB/100/075/PG/G90	TTB/100/100/PG/G90	N/A	N/A	N/A
150	TTB/150/050/PG/G90	TTB/150/075/PG/G90	TTB/150/100/PG/G90	TTB/150/150/PG/G90	N/A	N/A
225	TTB/225/050/PG/G90	TTB/225/075/PG/G90	TTB/225/100/PG/G90	TTB/225/150/PG/G90	TTB/225/225/PG/G90	N/A
300	TTB/300/050/PG/G90	TTB/300/075/PG/G90	TTB/300/100/PG/G90	TTB/300/150/PG/G90	TTB/300/225/PG/G90	TTB/300/300/PG/G90

90° bend with top lid and square

Fixing Options: Turnbuckle type e.g. TTB/100/100/PG/S90

Screw fix type – add “S” after the first T e.g. TSTB/100/100/PG/S90

Tamper proof type – add “M” after the first T e.g. TMTB/100/100/PG/S90



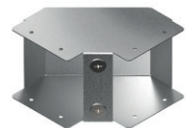
Width mm	50mm Deep	75mm Deep	100mm Deep	150mm Deep	225mm Deep	300mm Deep
50	TTB/050/050/PG/S90	N/A	N/A	N/A	N/A	N/A
75	TTB/075/050/PG/S90	TTB/075/075/PG/S90	N/A	N/A	N/A	N/A
100	TTB/100/050/PG/S90	TTB/100/075/PG/S90	TTB/100/100/PG/S90	N/A	N/A	N/A
150	TTB/150/050/PG/S90	TTB/150/075/PG/S90	TTB/150/100/PG/S90	TTB/150/150/PG/S90	N/A	N/A
225	TTB/225/050/PG/S90	TTB/225/075/PG/S90	TTB/225/100/PG/S90	TTB/225/150/PG/S90	TTB/225/225/PG/S90	N/A
300	TTB/300/050/PG/S90	TTB/300/075/PG/S90	TTB/300/100/PG/S90	TTB/300/150/PG/S90	TTB/300/225/PG/S90	TTB/300/300/PG/S90

90° bend with inside lid and gusset

Fixing Options: Turnbuckle type e.g. TIB/100/100/PG/S90

Screw fix type – add “S” after the first T e.g. TSIB/100/100/PG/S90

Tamper proof type – add “M” after the first T e.g. TMIB/100/100/PG/S90



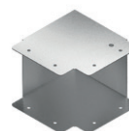
Width mm	50mm Deep	75mm Deep	100mm Deep	150mm Deep	225mm Deep	300mm Deep
50	TIB/050/050/PG/G90	N/A	N/A	N/A	N/A	N/A
75	TIB/075/050/PG/G90	TIB/075/075/PG/G90	N/A	N/A	N/A	N/A
100	TIB/100/050/PG/G90	TIB/100/075/PG/G90	TIB/100/100/PG/G90	N/A	N/A	N/A
150	TIB/150/050/PG/G90	TIB/150/075/PG/G90	TIB/150/100/PG/G90	TIB/150/150/PG/G90	N/A	N/A
225	TIB/225/050/PG/G90	TIB/225/075/PG/G90	TIB/225/100/PG/G90	TIB/225/150/PG/G90	TIB/225/225/PG/G90	N/A
300	TIB/300/050/PG/G90	TIB/300/075/PG/G90	TIB/300/100/PG/G90	TIB/300/150/PG/G90	TIB/300/225/PG/G90	TIB/300/300/PG/G90

90° bend with inside lid and square

Fixing Options: Turnbuckle type e.g. TIB/100/100/PG/S90

Screw fix type – add “S” after the first T e.g. TSIB/100/100/PG/S90

Tamper proof type – add “M” after the first T e.g. TMIB/100/100/PG/S90



Width mm	50mm Deep	75mm Deep	100mm Deep	150mm Deep	225mm Deep	300mm Deep
50	TIB/050/050/PG/S90	N/A	N/A	N/A	N/A	N/A
75	TIB/075/050/PG/S90	TIB/075/075/PG/S90	N/A	N/A	N/A	N/A
100	TIB/100/050/PG/S90	TIB/100/075/PG/S90	TIB/100/100/PG/S90	N/A	N/A	N/A
150	TIB/150/050/PG/S90	TIB/150/075/PG/S90	TIB/150/100/PG/S90	TIB/150/150/PG/S90	N/A	N/A
225	TIB/225/050/PG/S90	TIB/225/075/PG/S90	TIB/225/100/PG/S90	TIB/225/150/PG/S90	TIB/225/225/PG/S90	N/A
300	TIB/300/050/PG/S90	TIB/300/075/PG/S90	TIB/300/100/PG/S90	TIB/300/150/PG/S90	TIB/300/225/PG/S90	TIB/300/300/PG/S90

90° bend with outside lid and gusset

Fixing Options: Turnbuckle type e.g. TOB/100/100/PG/G90

Screw fix type – add “S” after the first T e.g. TSOB/100/100/PG/G90

Tamper proof type – add “M” after the first T e.g. TMOB/100/100/PG/G90



Width mm	50mm Deep	75mm Deep	100mm Deep	150mm Deep	225mm Deep	300mm Deep
50	TOB/050/050/PG/G90	N/A	N/A	N/A	N/A	N/A
75	TOB/075/050/PG/G90	TOB/075/075/PG/G90	N/A	N/A	N/A	N/A
100	TOB/100/050/PG/G90	TOB/100/075/PG/G90	TOB/100/100/PG/G90	N/A	N/A	N/A
150	TOB/150/050/PG/G90	TOB/150/075/PG/G90	TOB/150/100/PG/G90	TOB/150/150/PG/G90	N/A	N/A
225	TOB/225/050/PG/G90	TOB/225/075/PG/G90	TOB/225/100/PG/G90	TOB/225/150/PG/G90	TOB/225/225/PG/G90	N/A
300	TOB/300/050/PG/G90	TOB/300/075/PG/G90	TOB/300/100/PG/G90	TOB/300/150/PG/G90	TOB/300/225/PG/G90	TOB/300/300/PG/G90

90° bend with outside lid and square

Fixing Options: Turnbuckle type e.g. TOB/100/100/PG/S90

Screw fix type – add “S” after the first T e.g. TSOB/100/100/PG/S90

Tamper proof type – add “M” after the first T e.g. TMOB/100/100/PG/S90



Width mm	50mm Deep	75mm Deep	100mm Deep	150mm Deep	225mm Deep	300mm Deep
50	TOB/050/050/PG/S90	N/A	N/A	N/A	N/A	N/A
75	TOB/075/050/PG/S90	TOB/075/075/PG/S90	N/A	N/A	N/A	N/A
100	TOB/100/050/PG/S90	TOB/100/075/PG/S90	TOB/100/100/PG/S90	N/A	N/A	N/A
150	TOB/150/050/PG/S90	TOB/150/075/PG/S90	TOB/150/100/PG/S90	TOB/150/150/PG/S90	N/A	N/A
225	TOB/225/050/PG/S90	TOB/225/075/PG/S90	TOB/225/100/PG/S90	TOB/225/150/PG/S90	TOB/225/225/PG/S90	N/A
300	TOB/300/050/PG/S90	TOB/300/075/PG/S90	TOB/300/100/PG/S90	TOB/300/150/PG/S90	TOB/300/225/PG/S90	TOB/300/300/PG/S90

45° bend with top lid and gusset

Fixing Options: Turnbuckle type e.g. TTB/100/100/PG/G45

Screw fix type – add “S” after the first T e.g. TSTB/100/100/PG/G45

Tamper proof type – add “M” after the first T e.g. TMTB/100/100/PG/G45



Width mm	50mm Deep	75mm Deep	100mm Deep	150mm Deep	225mm Deep	300mm Deep
50	TTB/050/050/PG/G45	N/A	N/A	N/A	N/A	N/A
75	TTB/075/050/PG/G45	TTB/075/075/PG/G45	N/A	N/A	N/A	N/A
100	TTB/100/050/PG/G45	TTB/100/075/PG/G45	TTB/100/100/PG/G45	N/A	N/A	N/A
150	TTB/150/050/PG/G45	TTB/150/075/PG/G45	TTB/150/100/PG/G45	TTB/150/150/PG/G45	N/A	N/A
225	TTB/225/050/PG/G45	TTB/225/075/PG/G45	TTB/225/100/PG/G45	TTB/225/150/PG/G45	TTB/225/225/PG/G45	N/A
300	TTB/300/050/PG/G45	TTB/300/075/PG/G45	TTB/300/100/PG/G45	TTB/300/150/PG/G45	TTB/300/225/PG/G45	TTB/300/300/PG/G45

45° bend with inside lid and gusset

Fixing Options: Turnbuckle type e.g. TIB/100/100/PG/G45

Screw fix type – add “S” after the first T e.g. TSIB/100/100/PG/G45

Tamper proof type – add “M” after the first T e.g. TMIB/100/100/PG/G45



Width mm	50mm Deep	75mm Deep	100mm Deep	150mm Deep	225mm Deep	300mm Deep
50	TIB/050/050/PG/G45	N/A	N/A	N/A	N/A	N/A
75	TIB/075/050/PG/G45	TIB/075/075/PG/G45	N/A	N/A	N/A	N/A
100	TIB/100/050/PG/G45	TIB/100/075/PG/G45	TIB/100/100/PG/G45	N/A	N/A	N/A
150	TIB/150/050/PG/G45	TIB/150/075/PG/G45	TIB/150/100/PG/G45	TIB/150/150/PG/G45	N/A	N/A
225	TIB/225/050/PG/G45	TIB/225/075/PG/G45	TIB/225/100/PG/G45	TIB/225/150/PG/G45	TIB/225/225/PG/G45	N/A
300	TIB/300/050/PG/G45	TIB/300/075/PG/G45	TIB/300/100/PG/G45	TIB/300/150/PG/G45	TIB/300/225/PG/G45	TIB/300/300/PG/G45

45° bend with outside lid and gusset

Fixing Options: Turnbuckle type e.g. TOB/100/100/PG/G45

Screw fix type – add “S” after the first T e.g. TSOB/100/100/PG/G45

Tamper proof type – add “M” after the first T e.g. TMOB/100/100/PG/G45



Width mm	50mm Deep	75mm Deep	100mm Deep	150mm Deep	225mm Deep	300mm Deep
50	TOB/050/050/PG/G45	N/A	N/A	N/A	N/A	N/A
75	TOB/075/050/PG/G45	TOB/075/075/PG/G45	N/A	N/A	N/A	N/A
100	TOB/100/050/PG/G45	TOB/100/075/PG/G45	TOB/100/100/PG/G45	N/A	N/A	N/A
150	TOB/150/050/PG/G45	TOB/150/075/PG/G45	TOB/150/100/PG/G45	TOB/150/150/PG/G45	N/A	N/A
225	TOB/225/050/PG/G45	TOB/225/075/PG/G45	TOB/225/100/PG/G45	TOB/225/150/PG/G45	TOB/225/225/PG/G45	N/A
300	TOB/300/050/PG/G45	TOB/300/075/PG/G45	TOB/300/100/PG/G45	TOB/300/150/PG/G45	TOB/300/225/PG/G45	TOB/300/300/PG/G45

Tees

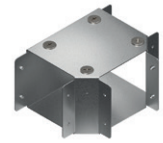


Tee with top lid and gusset

Fixing Options: Turnbuckle type e.g. TTT/100/100/PG/G

Screw fix type – add “S” after the first T e.g. TSTT/100/100/PG/G

Tamper proof type – add “M” after the first T e.g. TMTT/100/100/PG/G



Width mm	50mm Deep	75mm Deep	100mm Deep	150mm Deep	225mm Deep	300mm Deep
50	TTT/050/050/PG/G	N/A	N/A	N/A	N/A	N/A
75	TTT/075/050/PG/G	TTT/075/075/PG/G	N/A	N/A	N/A	N/A
100	TTT/100/050/PG/G	TTT/100/075/PG/G	TTT/100/100/PG/G	N/A	N/A	N/A
150	TTT/150/050/PG/G	TTT/150/075/PG/G	TTT/150/100/PG/G	TTT/150/150/PG/G	N/A	N/A
225	TTT/225/050/PG/G	TTT/225/075/PG/G	TTT/225/100/PG/G	TTT/225/150/PG/G	TTT/225/225/PG/G	N/A
300	TTT/300/050/PG/G	TTT/300/075/PG/G	TTT/300/100/PG/G	TTT/300/150/PG/G	TTT/300/225/PG/G	TTT/300/300/PG/G

Tee with top lid and square

Fixing Options: Turnbuckle type e.g. TTT/100/100/PG/S

Screw fix type – add “S” after the first T e.g. TSTT/100/100/PG/S

Tamper proof type – add “M” after the first T e.g. TMTT/100/100/PG/S



Width mm	50mm Deep	75mm Deep	100mm Deep	150mm Deep	225mm Deep	300mm Deep
50	TTT/050/050/PG/S	N/A	N/A	N/A	N/A	N/A
75	TTT/075/050/PG/S	TTT/075/075/PG/S	N/A	N/A	N/A	N/A
100	TTT/100/050/PG/S	TTT/100/075/PG/S	TTT/100/100/PG/S	N/A	N/A	N/A
150	TTT/150/050/PG/S	TTT/150/075/PG/S	TTT/150/100/PG/S	TTT/150/150/PG/S	N/A	N/A
225	TTT/225/050/PG/S	TTT/225/075/PG/S	TTT/225/100/PG/S	TTT/225/150/PG/S	TTT/225/225/PG/S	N/A
300	TTT/300/050/PG/S	TTT/300/075/PG/S	TTT/300/100/PG/S	TTT/300/150/PG/S	TTT/300/225/PG/S	TTT/300/300/PG/S

Tee with inside lid and gusset

Fixing Options: Turnbuckle type e.g. TIT/100/100/PG/G

Screw fix type – add “S” after the first T e.g. TSIT/100/100/PG/G

Tamper proof type – add “M” after the first T e.g. TMIT/100/100/PG/G



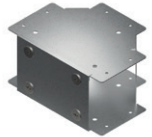
Width mm	50mm Deep	75mm Deep	100mm Deep	150mm Deep	225mm Deep	300mm Deep
50	TIT/050/050/PG/G	N/A	N/A	N/A	N/A	N/A
75	TIT/075/050/PG/G	TIT/075/075/PG/G	N/A	N/A	N/A	N/A
100	TIT/100/050/PG/G	TIT/100/075/PG/G	TIT/100/100/PG/G	N/A	N/A	N/A
150	TIT/150/050/PG/G	TIT/150/075/PG/G	TIT/150/100/PG/G	TIT/150/150/PG/G	N/A	N/A
225	TIT/225/050/PG/G	TIT/225/075/PG/G	TIT/225/100/PG/G	TIT/225/150/PG/G	TIT/225/225/PG/G	N/A
300	TIT/300/050/PG/G	TIT/300/075/PG/G	TIT/300/100/PG/G	TIT/300/150/PG/G	TIT/300/225/PG/G	TIT/300/300/PG/G

Tee with outside lid and gusset

Fixing Options: Turnbuckle type e.g. TOT/100/100/PG/G

Screw fix type – add “S” after the first T e.g. TSOT/100/100/PG/G

Tamper proof type – add “M” after the first T e.g. TMOT/100/100/PG/G



Width mm	50mm Deep	75mm Deep	100mm Deep	150mm Deep	225mm Deep	300mm Deep
50	TOT/050/050/PG/G	N/A	N/A	N/A	N/A	N/A
75	TOT/075/050/PG/G	TOT/075/075/PG/G	N/A	N/A	N/A	N/A
100	TOT/100/050/PG/G	TOT/100/075/PG/G	TOT/100/100/PG/G	N/A	N/A	N/A
150	TOT/150/050/PG/G	TOT/150/075/PG/G	TOT/150/100/PG/G	TOT/150/150/PG/G	N/A	N/A
225	TOT/225/050/PG/G	TOT/225/075/PG/G	TOT/225/100/PG/G	TOT/225/150/PG/G	TOT/225/225/PG/G	N/A
300	TOT/300/050/PG/G	TOT/300/075/PG/G	TOT/300/100/PG/G	TOT/300/150/PG/G	TOT/300/225/PG/G	TOT/300/300/PG/G

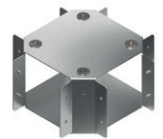
Crossovers & Reducers

Crossovers

Fixing Options: Turnbuckle type e.g. TCO/100/100/PG/G

Screw fix type – add “S” after the first T e.g. TSCO/100/100/PG/G

Tamper proof type – add “M” after the first T e.g. TMCO/100/100/PG/G



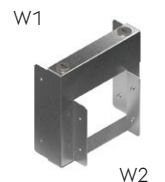
Width mm	50mm Deep	75mm Deep	100mm Deep	150mm Deep	225mm Deep	300mm Deep
50	TCO/050/050/PG/G	N/A	N/A	N/A	N/A	N/A
75	TCO/075/050/PG/G	TCO/075/075/PG/G	N/A	N/A	N/A	N/A
100	TCO/100/050/PG/G	TCO/100/075/PG/G	TCO/100/100/PG/G	N/A	N/A	N/A
150	TCO/150/050/PG/G	TCO/150/075/PG/G	TCO/150/100/PG/G	TCO/150/150/PG/G	N/A	N/A
225	TCO/225/050/PG/G	TCO/225/075/PG/G	TCO/225/100/PG/G	TCO/225/150/PG/G	TCO/225/225/PG/G	N/A
300	TCO/300/050/PG/G	TCO/300/075/PG/G	TCO/300/100/PG/G	TCO/300/150/PG/G	TCO/300/225/PG/G	TCO/300/300/PG/G

Reducers

Fixing Options: Turnbuckle type e.g. TTR/100/100/TO/050/050/PG

Screw fix type – add “S” after the first T e.g. TSTR/100/100/TO/050/050/PG

Tamper proof type – add “M” after the first T e.g. TMTR/100/100/TO/050/050/PG3



Width 1 mm	Width 2 mm			
	50 x 50	75 x 75	100 x 100	150 x 150
75 x 75	TTR/075/075/TO/050/050/PG	N/A	N/A	N/A
100 x 100	TTR/100/100/TO/050/050/PG	TTR/100/100/TO/075/075/PG	N/A	N/A
150 x 150	TTR/150/150/TO/050/050/PG	TTR/150/150/TO/075/075/PG	TTR/150/150/TO/100/100/PG	N/A
225 x 225	TTR/225/225/TO/050/050/PG	TTR/225/225/TO/075/075/PG	TTR/225/225/TO/100/100/PG	TTR/225/225/TO/150/150/PG
300 x 300	TTR/300/300/TO/050/050/PG	TTR/300/300/TO/075/075/PG	TTR/300/300/TO/100/100/PG	TTR/300/300/TO/150/150/PG

Accessories & Lids

Flared connector

Fixing Options: Turnbuckle type e.g. TFC/100/100/PG

Screw fix type – add “S” after the first T e.g. TSFC/100/100/PG

Tamper proof type – add “M” after the first T e.g. TMFC/100/100/PG

Width mm	50mm Deep	75mm Deep	100mm Deep	150mm Deep	225mm Deep	300mm Deep
50	TFC/050/050/PG	N/A	N/A	N/A	N/A	N/A
75	TFC/075/050/PG	TFC/075/075/PG	N/A	N/A	N/A	N/A
100	TFC/100/050/PG	TFC/100/075/PG	TFC/100/100/PG	N/A	N/A	N/A
150	TFC/150/050/PG	TFC/150/075/PG	TFC/150/100/PG	TFC/150/150/PG	N/A	N/A
225	TFC/225/050/PG	TFC/225/075/PG	TFC/225/100/PG	TFC/225/150/PG	TFC/225/225/PG	N/A
300	TFC/300/050/PG	TFC/300/075/PG	TFC/300/100/PG	TFC/300/150/PG	TFC/300/225/PG	TFC/300/300/PG/PG



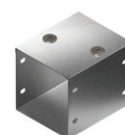
Fitting to fitting connector

Fixing Options: Turnbuckle type e.g. TAC/100/100/PG

Screw fix type – add “S” after the first T e.g. TSAC/100/100/PG

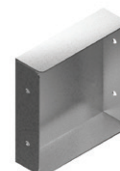
Tamper proof type – add “M” after the first T e.g. TMAC/100/100/PGPG

Width mm	50mm Deep	75mm Deep	100mm Deep	150mm Deep	225mm Deep	300mm Deep
50	TAC/050/050/PG	N/A	N/A	N/A	N/A	N/A
75	TAC/075/050/PG	TAC/075/075/PG	N/A	N/A	N/A	N/A
100	TAC/100/050/PG	TAC/100/075/PG	TAC/100/100/PG	N/A	N/A	N/A
150	TAC/150/050/PG	TAC/150/075/PG	TAC/150/100/PG	TAC/150/150/PG	N/A	N/A
225	TAC/225/050/PG	TAC/225/075/PG	TAC/225/100/PG	TAC/225/150/PG	TAC/225/225/PG	N/A
300	TAC/300/050/PG	TAC/300/075/PG	TAC/300/100/PG	TAC/300/150/PG	TAC/300/225/PG	TAC/300/300/PG



Stop end

Width mm	50mm Deep	75mm Deep	100mm Deep	150mm Deep	225mm Deep	300mm Deep
50	TSE4X/050/050/PG	N/A	N/A	N/A	N/A	N/A
75	TSE4X/075/050/PG	TSE4X/075/075/PG	N/A	N/A	N/A	N/A
100	TSE4X/100/050/PG	TSE4X/100/075/PG	TSE4X/100/100/PG	N/A	N/A	N/A
150	TSE4X/150/050/PG	TSE4X/150/075/PG	TSE4X/150/100/PG	TSE4X/150/150/PG	N/A	N/A
225	TSE4X/225/050/PG	TSE4X/225/075/PG	TSE4X/225/100/PG	TSE4X/225/150/PG	TSE4X/225/225/PG	N/A
300	TSE4X/300/050/PG	TSE4X/300/075/PG	TSE4X/300/100/PG	TSE4X/300/150/PG	TSE4X/300/225/PG	TSE4X/300/300/PG



Flange bracket

Width mm	50mm Deep	75mm Deep	100mm Deep	150mm Deep	225mm Deep	300mm Deep
50	TFL/050/050/PG	N/A	N/A	N/A	N/A	N/A
75	TFL/075/050/PG	TFL/075/075/PG	N/A	N/A	N/A	N/A
100	TFL/100/050/PG	TFL/100/075/PG	TFL/100/100/PG	N/A	N/A	N/A
150	TFL/150/050/PG	TFL/150/075/PG	TFL/150/100/PG	TFL/150/150/PG	N/A	N/A
225	TFL/225/050/PG	TFL/225/075/PG	TFL/225/100/PG	TFL/225/150/PG	TFL/225/225/PG	N/A
300	TFL/300/050/PG	TFL/300/075/PG	TFL/300/100/PG	TFL/300/150/PG	TFL/300/225/PG	TFL/300/300/PG



Trunking connector

Width mm	50mm Deep	75mm Deep	100mm Deep	150mm Deep	225mm Deep
50	TC/050/050/PG/PK10	N/A	N/A	N/A	N/A
75	TC/075/050/PG/PK10	TC/075/075/PG/PK10	N/A	N/A	N/A
100	TC/100/050/PG/PK10	TC/100/075/PG/PK10	TC/100/100/PG/PK10	N/A	N/A
150	TC/150/050/PG/PK5	TC/150/075/PG/PK5	TC/150/100/PG/PK5	TC/150/150/PG/PK5	N/A
225	TC/225/050/PG/PK5	TC/225/075/PG/PK5	TC/225/100/PG/PK5	TC/225/150/PG/PK5	TC/225/225/PG/PK5



Turnbuckle lid 3m long

Width mm	
50	TSC/050/PG/3
75	TSC/075/PG/3
100	TSC/100/PG/3
150	TSC/150/PG/3
225	TSC/225/PG/3
300	TSC/300/PG/3



Hanger bracket

Width mm	
50	THB/050/PG
75	THB/075/PG
100	THB/100/PG
150	THB/150/PG
225	THB/225/PG
300	N/A



Screw fix lid 3m long

Fasteners not included

Width mm	
50	TSSC/050/PG/3
75	TSSC/075/PG/3
100	TSSC/100/PG/3
150	TSSC/150/PG/3
225	TSSC/225/PG/3
300	TSSC/300/PG/3



Cable retainer

Width mm	Pack of 10
50	TCR/050/PG/PK10
75	TCR/075/PG/PK10
100	TCR/100/PG/PK10
150	TCR/150/PG/PK10
225	TCR/225/PG/PK10
300	TCR/300/PG/PK10



Turnbuckles

Pack of 10
TB1/PK10



Earth link

Pack of 10
TES/PK10



Pin rack

Width mm	50mm Deep	75mm Deep	100mm Deep	150mm Deep	225mm Deep
50	TPR/050/050/PG	N/A	N/A	N/A	N/A
75	TPR/075/050/PG	TPR/075/075/PG	N/A	N/A	N/A
100	TPR/100/050/PG	TPR/100/075/PG	TPR/100/100/PG	N/A	N/A
150	TPR/150/050/PG	TPR/150/075/PG	TPR/150/100/PG	TPR/150/150/PG	N/A



M5 screw fixings

Pack of 4
M05x5CS/4



M5 tamper proof screw fixings

Pack of 4
M05x5SF/4



Divider 3m length

Fasteners not included

Depth mm	
50	TDI/050/PG/3
75	TDI/075/PG/3
100	TDI/100/PG/3
150	TDI/150/PG/3
225	TDI/225/PG/3
300	TDI/300/PG/3



COMPARTMENTALISED PRODUCTS

For 2 compartments:

Add 'C2' after part number, e.g. TTB/100/100/PG/G90/C2



2-compartment (C2)

For 3 compartments:

Add 'C3' after part number, e.g. TTB/100/100/PG/G90/C3.

Unless otherwise stated, all compartments will be of equal size.

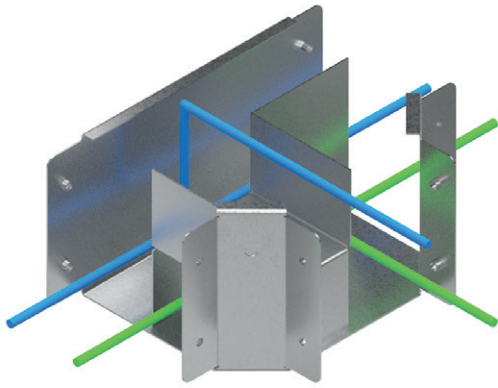


3-compartment (C3)

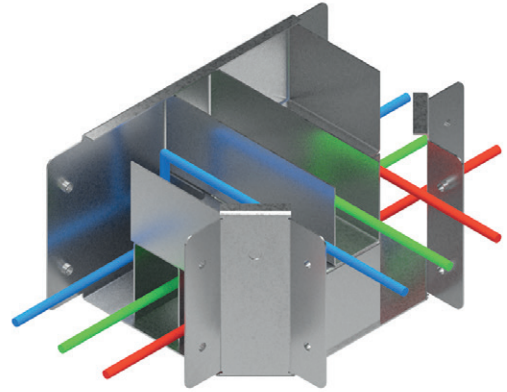
Trunking with more than 3 compartments is available on request



Set outs for top lid tees

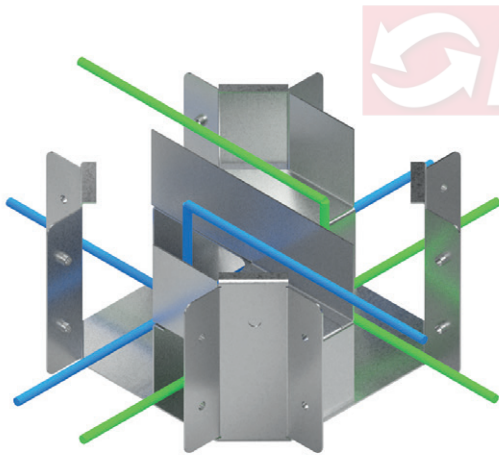


2-compartment

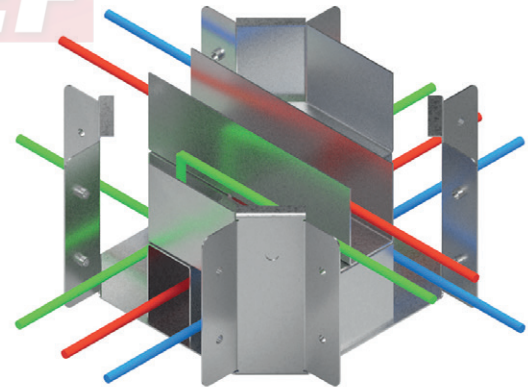


3-compartment

Set outs for crossovers



2-compartment



3-compartment

LIGHTING TRUNKING

Straight length

Trunking size mm	3m long	4m long	5m long	6m long
50x50	TLSL/050/050/PG3	TLSL/050/050/PG4	TLSL/050/050/PG5	TLSL/050/050/PG6



Galvanised snap-in lid

Trunking size mm	2m long
50x50	TLSL/050/C



45° bend top lid

Trunking size mm	
50x50	TLTB/050/050/PG/G45



Plastic snap-in lid

Trunking size mm	2m long colour white
50x50	TLSL/050/CPVC



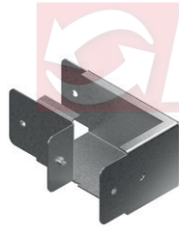
45° bend inside lid

Trunking size mm	
50x50	TLIB/050/050/PG/G45



90° bend top lid

Trunking size mm	
50x50	TLTB/050/050/PG/S90



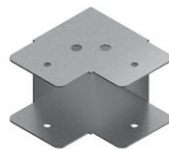
45° bend outside lid

Trunking size mm	
50x50	TLOB/050/050/PG/G45



90° bend inside lid

Trunking size mm	
50x50	TLIB/050/050/PG/S90



Tee top lid

Trunking size mm	
50x50	TLTT/050/050/PG/S



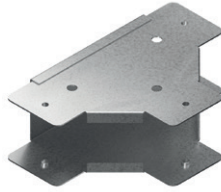
90° bend outside lid

Trunking size mm	
50x50	TLOB/050/050/PG/S90



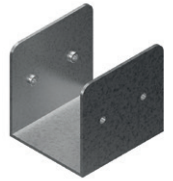
Tee inside lid

Trunking size mm	
50x50	TLIT/050/050/PG/G



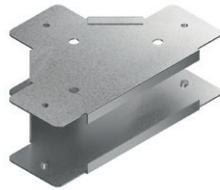
Connector

Trunking size mm	Pack of 10
50x50	TC/050/050/PG/PK10



Tee outside lid

Trunking size mm	
50x50	TLOT/050/050/PG/G



Long connector

Trunking size mm	
50x50	TLC/050/050/PG



Crossover

Trunking size mm	
50x50	TLCO/050/050/PG/S



Stop end

Trunking size mm	
50x50	TSE4X/050/050/PG



Flange

Trunking size mm	
50x50	TFL/050/050/PG



Cable retainer

Trunking size mm	Pack of 10
50x50	TCR/050/PG/PK10



Stirrup hanger

Trunking size mm	
50x50	TLSH/10 11mm hole
50x50	TLSH/20 22mm hole



Suspension fitting

Trunking size mm	Pack of 10
50x50	TLA1/PK10

