



CONLOK MEF

Traditional. **Upgraded.**

Technical Submission

| | |
|-------------------------------|------------|
| Declaration of Conformity | Pages 2-3 |
| Grub Screw Torque Test | Page 4 |
| FAQs | Page 5 |
| Benefits | Page 6 |
| Where Conlok is Installed | Page 7 |
| Metpro Environmental Policy | Page 8 |
| Metpro Health & Safety Policy | Pages 9-14 |

DEMON CAT 

A **metpro** Brand
Group

Innovation & Excellence in Manufacturing

The Conlok Conduit System:
BS EN 61386-1:2008+A1:2019
BS EN 61386-21:2021+A11:2021

Declaration of Conformity

Demon Cato (part of Metpro Group Limited) declare under sole responsibility that: **Conlok Malleable Boxes & Accessories are produced to BS EN 61386-21:2021+A11:2021 (Conduit Systems for Cable Management)** and comply with the requirements of Class 4 corrosion resistance. Further to the above, Conlok boxes can be rated to an Ingress Protection (IP) Resistance of IP4X when used in conjunction with Class 4 conduit tube, manufactured to the requirements of **BS EN 61386-1:2008+A1:2019**.

In accordance with - **The Low Voltage Directive 2014/35EU.**



Relevant SKUs

Conlok Malleable Boxes

Terminal

| Size | Code | Pack |
|------|------|------|
| 20mm | CL1G | 10 |
| 25mm | CL8G | 10 |

Through

| Size | Code | Pack |
|------|------|------|
| 20mm | CL2G | 10 |
| 25mm | CL9G | 10 |

Angle

| Size | Code | Pack |
|------|-------|------|
| 20mm | CL3G | 10 |
| 25mm | CL10G | 10 |

Tee

| Size | Code | Pack |
|------|-------|------|
| 20mm | CL4G | 10 |
| 25mm | CL11G | 10 |

Intersection

| Size | Code | Pack |
|------|-------|------|
| 20mm | CL5G | 10 |
| 25mm | CL12G | 10 |

Branch U

| Size | Code | Pack |
|------|-------|------|
| 20mm | CL6G | 10 |
| 25mm | CL13G | 10 |

Branch Y

| Size | Code | Pack |
|------|-------|------|
| 20mm | CL7G | 10 |
| 25mm | CL14G | 10 |

Terminal c/w 25mm Hole in Base

| Size | Code | Pack |
|------|-------|------|
| 20mm | CL15G | 10 |

Terminal Back Outlet

| Size | Code | Pack |
|------|-------|------|
| 20mm | CL16G | 10 |

Conlok Accessories

Solid Coupler

| Size | Code | Pack |
|------|--------|------|
| 20mm | CL20GC | 40 |
| 25mm | CL25GC | 30 |

Flanged Coupler

| Size | Code | Pack |
|------|--------|------|
| 20mm | CL20FC | 25 |
| 25mm | CL25FC | 25 |

Adaptor

| Size | Code | Pack |
|------|--------|------|
| 20mm | CL20GA | 40 |
| 25mm | CL25GA | 30 |

Solid Bend

| Size | Code | Pack |
|------|--------|------|
| 20mm | CL20MB | 20 |
| 25mm | CL25MB | 10 |



Signed on behalf of Demon Cato
A Metpro Group Brand

A handwritten signature in blue ink, appearing to read 'M Holmes'.

Mr M Holmes
Product & Vendor Development Manager

Date of Issue

25th January 2022

Threaded Grub Screw Torque Test

DEMON CATO

A metpro Group Brand

Metpro Group Limited
Unit 4 Summit Crescent
Smethwick
West Midlands
B66 1BT

T: 0121 552 2100
E: sales@metpro.co.uk
W: metpro.co.uk

Threaded Grub Screw Torque Test

M4 Grub Screws used in the Conlok range of products meet the requirement of 1.2Nm of torque, as set out in BS EN 61386-21:2021+A11:2021, applied using a suitable torque screwdriver or wrench, applying a torque of 1.2Nm without sudden and jerky movements.

After the test, there shall be no damage sustained by the screw or nut such as breakage of the screw or damage to the thread that will impair further use of the screw or nut.

Testing Tool

Teng 1492SD Torque Screwdriver with a torque range of 1-5Nm.



Products Tested

| Products Tested | Torque Specified | Torque Achieved | Result |
|--------------------------------|-------------------------|------------------------|---------------|
| 1. Conlok Galvanised End Box | 1.2Nm | 2.0Nm | Pass |
| 1. Conlok Galvanised End Box | 1.2Nm | 2.0Nm | Pass |
| 1. Conlok Galvanised End Box | 1.2Nm | 2.0Nm | Pass |
| 1. Conlok Galvanised End Box | 1.2Nm | 2.0Nm | Pass |
| 1. Conlok Galvanised Angle Box | 1.2Nm | 2.0Nm | Pass |
| 1. Conlok Galvanised Angle Box | 1.2Nm | 2.0Nm | Pass |
| 1. Conlok Galvanised Angle Box | 1.2Nm | 2.0Nm | Pass |
| 1. Conlok Galvanised Angle Box | 1.2Nm | 2.0Nm | Pass |
| 1. Conlok Galvanised Coupler | 1.2Nm | 2.0Nm | Pass |
| 1. Conlok Galvanised Coupler | 1.2Nm | 2.0Nm | Pass |

Date Tested

11th November 2008

Signed on behalf of Demon Cato:

A handwritten signature in blue ink, appearing to read 'M. Holmes', is written over a dotted line.

Mr. Michael Holmes
Product & Vendor Development Manager

FAQs

What British Standard does the Conlok system comply with?

Conlok complies with BSEN61386-21:2021+A11:2021, the same standard as traditional steel conduit systems.

Why aren't Conlok boxes shiny like your standard malleable boxes?

Our standard boxes are hot dip galvanised before threads are cut into each spout.

The process of cutting threads strips away the protective galvanising coating leaving these areas exposed to potential rust and decay. In order to mitigate this, we took the decision to apply a further zinc coating on these areas, in order to provide extra corrosion resistance and ensure the threads are not hampered. With Conlok products not requiring the need for threads, they simply do not need this additional finish meaning they are the only fully galvanised system on the market.

Does Conlok comply to the British Standard for earth continuity?

Yes. All Conlok products fully comply to the relevant standard and indeed exceeded the requirements.

Are there any vibration issues with Conlok grub screws coming loose?

No. Conlok grub screws are manufactured from 12.9 Grade steel with a cup pointed screw, designed to 'bite' through the galvanising and into steel conduit lengths.

What strength do Conlok grub screw's have to attach to steel conduit?

Conlok grub screws achieved a mass of 450N over a 48 hour period, confirming they are more than capable of carrying out the task at hand.

Is Conlok suitable for external use?

Yes. Conlok is suitable for external applications however the use of CTI Mastic Sealant around spouts is recommended for high rainfall areas.

Do Demon Cato supply male & female Conlok adaptors?

No. Demon Cato manufacture a dedicated female adaptor only. However, with the addition of a standard conduit nipple, Conlok female adaptors can be used as male adaptors.

How do you know if an electrician has tightened the grub screw?

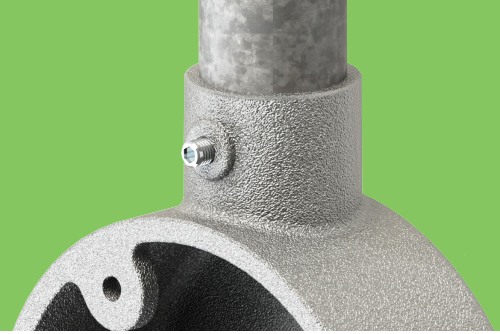
If necessary, each Conlok box or accessory can be marked using an indelible marker, as would be done with a distribution breaker, to show it has been installed & tightened.

Are Conlok products on Luckins?

Yes. Our full product offering is available to view on the Luckins Database.

Do I need an online account to access Demon Cato data sheets and BIM files online?

No. To make things as simple as possible, all our data sheets and BIM Revit files are available for download without the need for an account at www.metpro.co.uk.



Up to **75%** Labour Savings

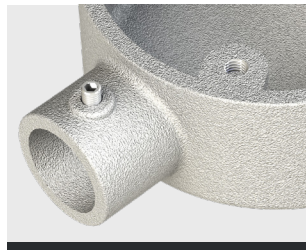


The Highlights



No need to thread conduit tube

With Conlok's unique built-in grub screw



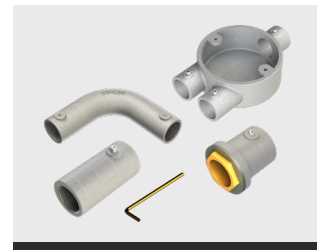
Fully galvanised system

Offering greater corrosion resistance



Fast-fix solution

Ideal for major projects where cost & safety are critical



Full range of accessories

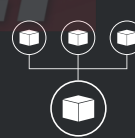
All of the essential items for quick installations



Increased on-site safety



Compliant to the latest standards



Reduced on-site storage



Used on major UK projects

Manufactured from malleable iron with a hot dip galvanised finish (bespoke clean room finish also available - please contact us for more information)

Conforms to BS EN 61386-1:2008+A1:2019 (Conduit Systems for Cable Management)

Conforms to BS EN 61386-21:2021+A11:2021 (Conduit Systems for Cable Management - Rigid Conduit Systems)

Manufactured in accordance with the Low Voltage Directive 2014/35/EU

Conlok grub screws are manufactured from Grade 12.9 Steel

Unthreaded spouts offer enhanced corrosion resistance against more traditional products

Where Conlok is installed

A small selection of major UK projects using Conlok

Sir Chris Hoy Velodrome,
Glasgow



Tesco Extra,
Middlesbrough

BBC Fire & Security,
Derby

HMP Sites;
West Lothian
Aberdeen
Bedford
Addiewell

Edinburgh Airport,
Edinburgh

Kendrew Barracks,
Oakham

Pure Gym,
Bath Spa

Proctor & Gamble,
Manchester

Amazon,
Dublin

**Tees Rep
Biomass Power
Station,**
Glasgow

Heathrow T2,
Heathrow

Wellington Barracks,
Oakham



MOD Bicester,
Oxfordshire



As a company we are dedicated to providing our customers with the best possible product and service, whilst endeavouring to avoid harm to our environment.

All matters of waste management have been sub-contracted out to local services. Our obligations are met under the Duty of Care Regulations including the Hazardous Waste Regulations 2005. This ensures compliance under the Environmental Protection Act 1991 and latterly Regulation 12 of the waste (England & Wales) Regulations 2011.

Our focus

- Maintain a management system to meet the requirements of ISO 9001
- Seek to ensure compliance with existing and future environmental and health and safety legislation and any other initiatives or requirements to which the company subscribes
- Continually improve our quality and environmental systems, prevent accidents and cases of work related ill health and maintain safe and healthy working conditions
- Identify and seek to reduce significant environmental effects, health and safety risks, and pollution which may arise from work activities
- Actively seek any avenues to allow the re-use and recycling of all materials wherever practical
- Provide appropriate quality, environmental and health and safety information and training for our staff, and encourage them to apply good practice both at work and at home
- Discuss quality, environmental and health and safety issues regularly at the highest levels of the company and consult with our employees on matters affecting their health and safety
- Liaise and encourage suppliers and customers to support and facilitate best possible products, safety and environmental practices.
- Sound management principles and practices shall be applied to meet commitments and to achieve performance objectives.

ISO14001

Our aim for continuous improvement at Metpro extends to every aspect of our business, including our approach and attitude to the environment.

We are now actively working towards achieving ISO14001 certification in order that we can ensure we always operate as ethically as possible.

Carbon Neutral

In line with our goal of ISO14001 certification, at Metpro, we also recognise our responsibility towards the wider supply chain.

As such, we are now focusing our efforts on becoming carbon neutral both internally and externally with our suppliers and customers.

As of December 2021, Metpro has partnered with Smart Carbon in order to firstly understand our carbon footprint, before taking steps to reduce this and offset these emissions accordingly.



1. Introduction

- 1.1 This document has been prepared and published under the requirements of Health & Safety at Work legislation.
- 1.2 The purpose of the document is to establish general standards for health and safety at work and to distribute responsibility for their achievement to all managers, supervisors, and other employees through the normal line management processes.
- 1.3 We recognise and accept our responsibility as an employer for providing a safe and healthy workplace and, as far as is reasonably practicable, a risk free working environment for all its employees.
- 1.4 It is our policy to promote high standards of Health and Safety in all areas of the business and through the way we work and behave, all of our employees and stakeholders will be protected from risks of occupational injury or ill health.

2. Statement of Intent

- 2.1 It is our intent to demonstrate an ongoing and determined commitment to improving health and safety at work throughout our organisation.
- 2.2 We will ensure the health and safety at work of all our employees and any other parties who may be affected by our work activities.
- 2.3 We will comply with the requirements of health and safety legislation.
- 2.4 We will lead industry by promoting best practice and exceeding the guidance of the Health and Safety Executive and other regulatory bodies.
- 2.5 This policy reflects our commitment to ensuring that health and safety at work is paramount to the business, and that effective health and safety actively contributes to our success.

3. Our Commitment

- 3.1 We will deliver our understanding of our obligations and commitment using the following listed methods.
- 3.2 AWARENESS: To ensure that all of our employees and stakeholders have an awareness and understanding of health and safety hazards and risk that affect our business. This in turn will be delivered through :
 - a) Health and Safety Policy Statement: Adequate resources will be provided to ensure all our employees, sub-contractors and stakeholders are aware of this policy and committed to its effective implementation.
 - b) Communication and Consultation: There will be active open communication and consultation between all our employees, the sub-contractors and stakeholders. Health and safety will be integrated into our communications, wherever appropriate.
 - c) Management Roles and Responsibilities: Roles and responsibilities for health and safety will be defined, as necessary, within job descriptions or profiles.



Senior management will ensure that:

1. adequate resources are provided for health and safety;
2. health and Safety is adequately assessed, controlled and monitored; and
3. our employees are actively involved on matters that affect health and safety.

d) Hazard Identification: We will identify our workplace health and safety hazards. We will inform our employee, the sub-contractors and stakeholders, as appropriate, of these workplace hazards.

3.3 COMPETENCE: All our employees and stakeholders have the competence to undertake their work with minimum risks to health and safety. This in turn will be delivered through :

a) Health and Safety Training: All our employees will be adequately instructed and trained on the health and safety issues that affect them, and the safe working practices that should be followed. We will ensure the health and safety competence of our sub-contractors and stakeholders.

b) Behaviour and culture:

1. Senior management will demonstrate leadership in health and safety.
2. Senior management will undertake tours to ensure that health and safety issues are identified, assessed and managed.
3. Systems will be in place and employees will be empowered to raise health and safety concerns with management.

c) Risk Assessment and Management:

1. We will assess the risks associated with health and safety hazards in the workplace.
2. All our employees will be informed of the health and safety hazards and risks that affect their work.
3. We will take action to prevent, reduce or control risks to an acceptable level and reduce the potential for incidents and accidents.
4. We will require our subcontractors and stakeholders to identify health and safety risks that may impact on our work activities.

3.4 COMPLIANCE: Our work activities achieve compliance with legislation, and our employees are empowered to take action to minimise health and safety risks. This in turn will be achieved through:

a) Incident Investigation: We will investigate accidents, incidents and near misses to drive improvement in our health and safety management. Any lessons learned from such events will be used to take corrective action to prevent recurrences.

b) Health and Safety Management System: We will implement a suitable and sufficient internal management system to ensure we:

1. comply with health and safety legislation; and
2. continually improve our health and safety performance.

c) Sub-contractor involvement : We will engage and collaborate with our sub-contractors to ensure their:

1. Health and Safety capability and competence fulfil our expectations;
2. Health and Safety performance is monitored and reviewed; and
3. work activities have minimal health and safety impacts on our activities.



- 3.5 EXCELLENCE: Metpro Limited is recognised for excellence in the way it manages health and safety. We will strive to achieve this by ...
 - a) Developing Innovative Practices: We will constantly encourage, develop, review and share “Health and Safety Good Practice” both internally and externally.
 - b) Influencing Stakeholders:
 - 1. We will only work with joint partners and clients who are willing to meet and achieve our health and safety expectations.
 - 2. We will engage and influence stakeholders to drive improvements in health and safety.
 - c) Work-Related Health:
 - 1. We will assess our occupational health risks.
 - 2. All our employees will be informed of the occupational health risks that affect their work.
 - 3. We will take action to prevent, reduce or control occupational health risks to an acceptable level and reduce the potential for ill health, including assessing all our employees’ fitness for work.
- 4. Health surveillance will be conducted to satisfy health and safety legislation.

4. Delivering our Policy

- 4.1 Our policy will be delivered by:
 - a) generating a culture that does not tolerate threats to health and safety; and
 - b) ensuring the real involvement of all our employees, subcontractors and stakeholders.
- 4.2 Business groups will implement management statements that explain how this policy will be delivered in the workplace.

5. Policy Review

- 5.1 This policy has immediate effect and replaces all previous versions.
- 5.2 This policy will be reviewed and amended, as necessary.



- 5.3 In order to prevent a fire occurring and to minimise the risk of casualties and damage in such an event we have nominated a Company Fire Safety Officer, defined under the Roles and Responsibilities section of this policy, and who takes overall responsibility for all aspects of fire safety within the building.
- 5.4 As part of this, all day to day responsibilities that are owned by the Company Fire Safety Officer may, by reference to a job description, be further delegated to other competent persons.
- 5.5 We have employed the services of a competent independent Fire Risk Consultant to carry out a suitable and sufficient written Fire Risk Assessment.
- 5.6 The Fire Risk Assessment and any findings will;
- c) form the foundation of the Fire Safety Policy.
 - d) provide the basis for action to achieve the objectives of preventing a fire and minimising damage should a fire occur
 - e) focus on the priorities rather than on fine detail and is compiled in liaison with a Fire Risk Consultant.
- 5.7 The Company Fire Safety Officer;
- a) will on a regular basis review the Fire Risk Assessment;
 - b) will trigger an independent review of the Fire Risk Assessment if there has been any significant change to the building and/or staff profile which may result in an increased risk to life safety.
 - c) will, if they become aware of a fire safety risk in the building take immediate action as appropriate to mitigate the risk.

6. Introduction

- 6.1 We have developed a fire safety policy and procedure which is designed to protect both life and physical assets.
- 6.2 Compliance with the fire safety policy and procedures is a legal requirement.
- 6.3 The effectiveness of this policy depends not only on physical precautions designed to prevent the occurrence and spread of fire, but also on the cooperation of every member of staff, customer, visitor and contractor.
- 6.4 All staff have duties and responsibilities in respect of fire safety.
- 6.5 Managers will be responsible for ensuring that the fire safety policy and fire safety procedures are brought to the attention of their staff and that they are observed by them at all times.

7. Roles and Responsibilities : Company Fire Safety Officer and Delegated Deputies

- 7.1 We have appointed the Finance Director as the Company Fire Safety Officer, due to this being the person who ultimately has responsibility and control of any business premises used in connection with all Company operations.
- 7.2 We have delegated the Operations Manager and the Systems Development Manager as Deputy Fire Safety Officers who will discharge any duties as necessary or as required.



- 7.3 The Company's Fire Safety Officer or Deputies have overall responsibility for Fire Safety within all areas of the building.
- 7.4 As part of the above, they will review;
- a) the Company Fire Safety Policy annually; and
 - b) the fire safety risk assessment for all buildings when significant changes happen, are due to happen or if there are no notable changes at least annually.
- 7.5 As part of the above, they will ensure that;
- a) a fire evacuation drill is completed a minimum of once a year and the results are recorded in the fire safety records file;
 - b) the fire alarm is tested weekly and the results are recorded in the fire safety records file;
 - c) the emergency escape lighting is tested monthly and the results are recorded in the fire safety records file;
 - d) the fire exit routes are checked monthly and the results are recorded in the fire safety records file;
 - e) the smoke detection system is checked and maintained 6 monthly by a competent person and the results are recorded in the fire safety records file;
 - f) the fire alarm system is checked and maintained annually by a competent person and the results are recorded in the fire safety records file;
 - g) the emergency lighting system is checked and maintained 6 monthly by a competent person and the results are recorded in the fire safety records file;
 - h) the fire extinguishers are checked and maintained annually by a competent person and the results are recorded in the fire safety records file; and
 - i) general housekeeping standards in all areas are adequate and that combustible materials are not stored inappropriately.

8. Roles and Responsibilities : All Members of Staff

- 8.1 The effectiveness of the Fire Safety Policy will depend on the full cooperation of every member of staff, without exception. Cooperation will be encouraged from the highest level.
- 8.2 Complying with fire safety procedures should be regarded as a basic duty by all staff and an essential obligation for all persons with management responsibility.
- 8.3 In association with the Fire Safety Policy, every member of staff is required to familiarise themselves, and comply at all times, with the Company Health and Safety Policy. The latter is published in the Company Handbook.
- 8.4 As part of the objectives of this Policy ALL EMPLOYEES MUST:
- a) Be accountable for their actions in an emergency.
 - b) Attend Fire Awareness Training or as requested.
 - c) Cooperate with necessary planned testing of Fire Evacuation Procedures.
 - d) Comply with information instruction and training.
 - e) Report fire safety hazards as soon as they are discovered.



Copyright Metpro Group 2022