



De-Icer

- Slinger
- Floating
- Dock Mount



Prevent Damage From
Ice Build-up Around
Boats, Docks and Marinas

Thank you for your purchase. It is our goal to ensure you are completely satisfied with your new De-Icer and it continues to operate smoothly for many years to come. Please take a few moments to read through this document for proper assembly, installation and maintenance to maximize the operating life of the unit.

Slinger De-Icer

Includes



De-icing Unit
(1/2 hp standard)
Options Available

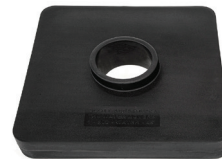


Securement ties and hardware are included

Submersible,
25-foot, heavy-duty power cord
Longer cords available

Floating De-Icer

Includes



31" Float

De-icing Unit
(1/2 hp standard)
Options Available

Securement Ties and hardware are included

Submersible,
35-foot,
heavy-duty
power cord
Longer cords available



Dock Mount De-Icer

Includes



Stainless Steel
Dock Plate
Part #20026
(standard)

De-icing Unit
(1/2 hp standard)
Options Available

Submersible,
25-foot,
heavy-duty
power cord
Longer cords available



5 Ft
Stainless Steel
Mounting Pole

Options

Aluminum
Truss Mount
Part #16502



Aluminum
Dock Post
Bracket
Part #16501



Fits posts up to
2-1/2" Dia.
Accommodates
Larger U-clamp
rings up to 4" Dia.

Oscillator
Part #165750



Dock Mount
Only

| | | 1/3 HP 115V | 1/2 HP 115V | 1/2 HP 230V | 3/4 HP 115V | 3/4 HP 230V | 1 HP 115V | 1 HP 230V |
|----------------|----------------|----------------|----------------|----------------|----------------|----------------|--------------|--------------|
| SPECIFICATIONS | WATTS | 630 | 670 | 670 | 875 | 940 | 1094 | 1210 |
| | AMPS | 8 | 10 | 5 | 10.7 | 6.8 | 11.5 | 8.2 |
| | RPM | 3450 | 3450 | 3450 | 3450 | 3450 | 3450 | 3450 |
| | GALLONS/MIN | 300 | 400 | 400 | 450 | 450 | 500 | 500 |
| | FLOW DISTANCE | 40' | 50' | 50' | 60' | 60' | 75' | 75' |
| | OSCILLATOR DIA | 80' | 100' | 100' | 120' | 120' | 150' | 150' |

Three phase power available 50Hz models available

| MAXIMUM CABLE RUN IN FEET FROM BREAKER | | | | | | | | |
|--|-------|--------------|--------------|--------------|--------------|--------------|--------------|--------------|
| CABLE SIZE | 12 GA | 175' | 160' | 650' | 125' | 480' | 100' | 400' |
| | 10 GA | 275' | 250' | 1020' | 200' | 760' | 150' | 630' |
| | 8 GA | 430' | 390' | 1610' | 300' | 1200' | 225' | 990' |
| | 6 GA | 680' | 620' | 2510' | 500' | 1870' | 400' | 1540' |
| | 4 GA | 1050' | 960' | 3880' | 860' | 2890' | 770' | 2380' |
| | 2 GA | 1600' | 1460' | 5880' | 1300' | 4370' | 1160' | 3610' |
| CABLE SUPPLIED Slinger and Dock Mount | | 25' 12 GA | 25' 12 GA | 25' 12 GA | 25' 10 GA | 25' 12 GA | 25' 10 GA | 25' 12 GA |
| CABLE SUPPLIED Floating | | 35' 12 GA | 35' 12 GA | 35' 12 GA | 35' 10 GA | 35' 12 GA | 35' 10 GA | 35' 12 GA |

DO NOT USE AN EXTENSION CORD TO SUPPLY POWER TO THE MOTOR

Parts and Accessories

For additional replacement parts, contact us at 800-928-3745



Propeller
Part # 30004



Thermostat
Part # 20042

Thermostat (optional accessory)

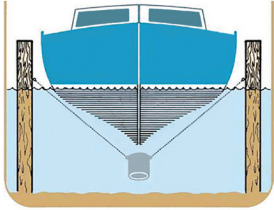
Our optional De-Icer Thermostat lets you set it and forget it! Automatically activates your De-Icer in frigid temperatures, adjustable from 0°F to 80°F. Plug-and-play with an impact-resistant enclosure and 8-foot cord for easy use.

Maintenance, Winterizing, Storing

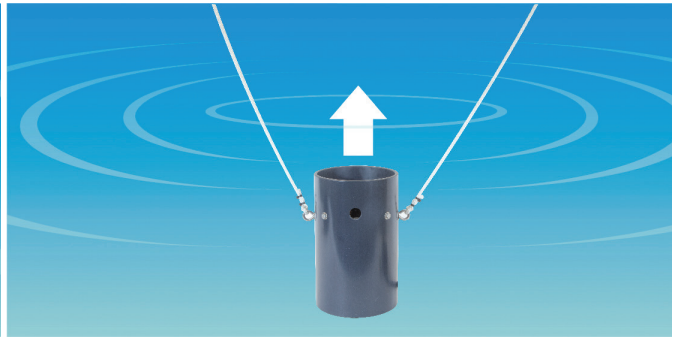
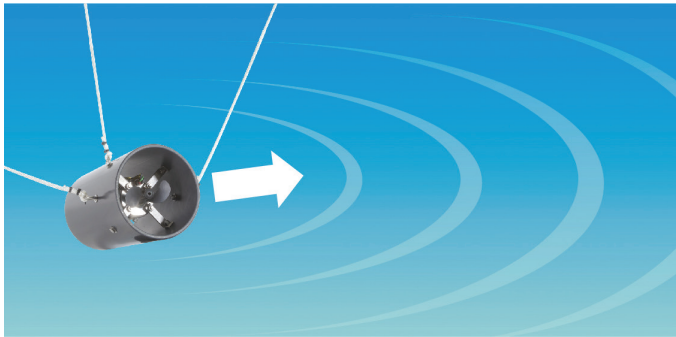
Our products require very little to no maintenance. Under normal operating conditions, you should enjoy many years of trouble-free service from the unit. As a rule of thumb, the propeller assembly on our De-Icer should be changed every three years. This is a simple procedure that can be done on-site. When the unit is removed from the water for the propeller switch, it would be a good opportunity to wash the unit down with high-pressure water. Once the unit is clean, a visual inspection of the entire De-Icer is recommended to be certain nothing is restricting water flow. If the De-icer is ever removed from the lake or pond, it is essential to store with pump submerged in a 5 gallon bucket of water to avoid damage to the pump seals.

Slinger De-Icer Installation

The Scott slinger style De-Icer can be suspended from a boat, pilings or dock by utilizing nylon ropes (included) to fasten. For the best results, position the unit 12" below the water's surface and angled upward at 45°. Utilizing a three-point securement, the Slinger De-Icer easily adjusts to compensate for varying water levels, and its heavy duty design is perfect for fresh and salt waters. The unique design allows for use in hard-to-reach areas and for rapidly changing conditions.



Shipped fully assembled

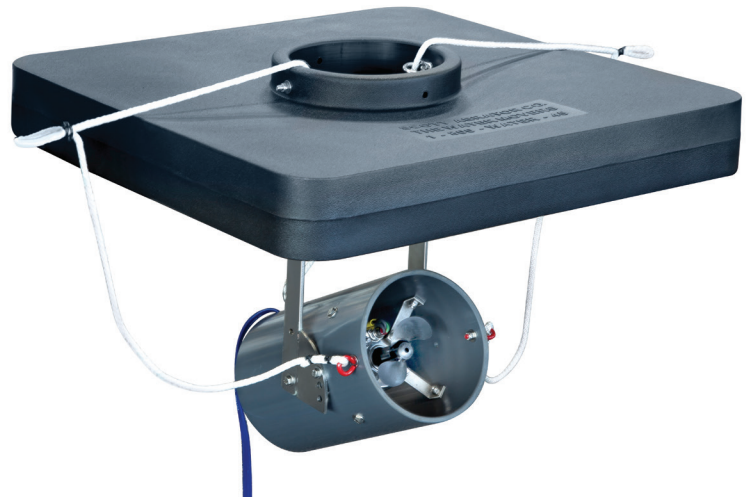


Always use a GFCI
Always disconnect the power when swimmers are present
Do NOT use an extension cord to supply power to the motor

Floating De-Icer Assembly and Installation

1. Remove 5/16" x 1" hex cap screw from the float bracket assembly. [Fig. 1](#)
2. Tilt float bracket assembly to the desired angle of water flow. Use the 5/16" x 1" hex cap screw to secure the float bracket assembly and gray tube in the desired position. For the best results, position the unit 12" below the water's surface and angled upward at 45°. [Fig. 2](#)
3. Place float over the top of the float bracket assembly. Align the holes in the float with the top hole in the yoke bracket. [Fig. 3](#)
4. Draw the rope up through the float. Take the long eye bolts and insert through the float bracket assembly and float. [Fig. 4](#)
5. Secure the red eye bolts in the red marked holes in the gray tube. [Fig. 5](#)
6. Take the 2 lengths of rope included with the unit and tie them to the loops in the white rope. Adjust the 2 lengths of rope between docks or pilings to achieve position that works best. [Fig. 6](#)

If the float has a tendency to rise when the unit is on, move loops down 3-4 inches.

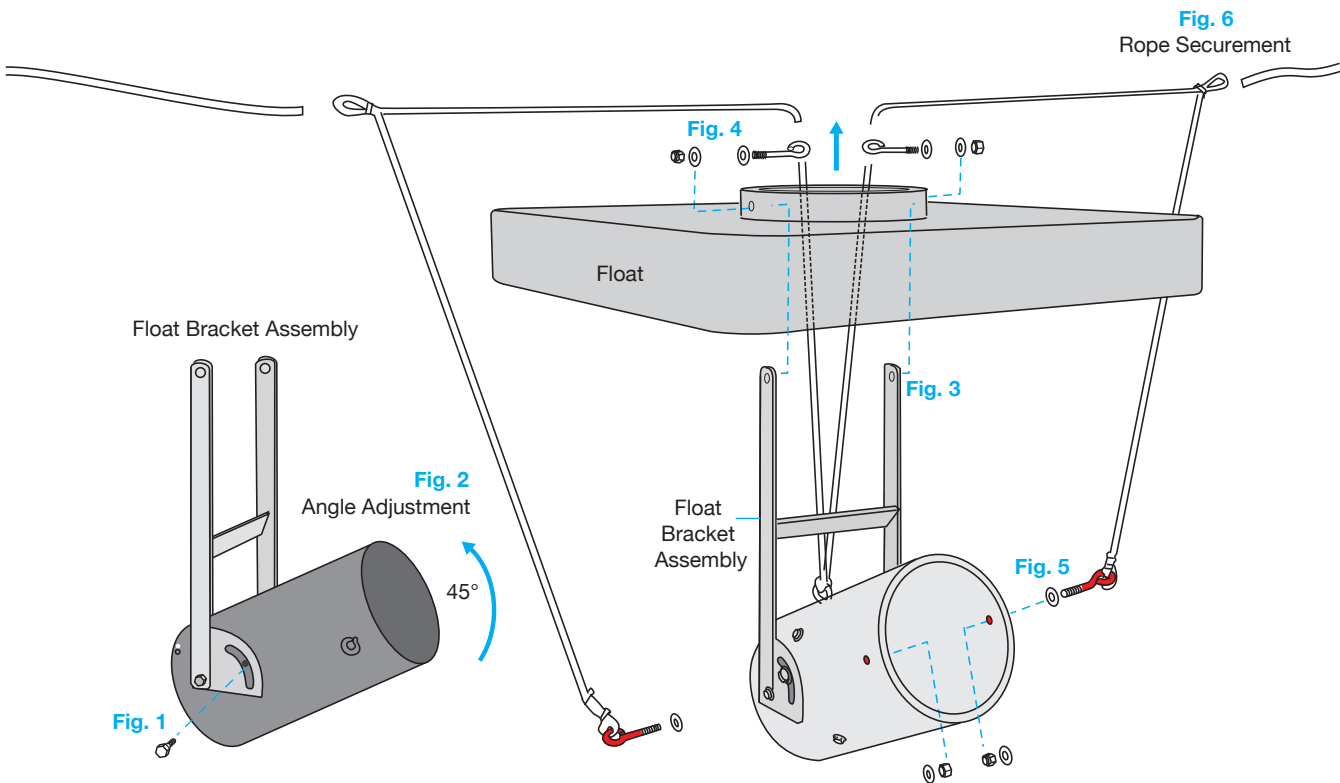


Includes

- 1 - De-Icer 8" Float Bracket Assembly
- 1 - Float Platform
- 2 - 3" Eye bolts/Washers/Locks Nuts
- 2 - 3/8" x 50' braided nylon rope

Tools Needed

- One 5/16" Wrench or Socket Screwdriver
- Two 1/2" Wrenches (Or Pliers)



Always use a GFCI
Always disconnect the power when swimmers are present
Do NOT use an extension cord to supply power to the motor

Dock Mount Assembly and Installation



Determine location that will best position the De-Icer to protect against ice damage, in a minimum water depth of 12". Adjust depth 4" from lake bottom.

Check that the dock framing is sturdy and will accept mounting bracket screws. Housing angle and direction can be adjusted as needed a full 360°.

Includes

- 1 - DE-ICER HOUSING ASSEMBLY
- 1 - STAINLESS-STEEL POLE
- 1 - DOCK PLATE
- 1 - PACKET OF LUBRICATING COMPOUND
- 2 - STAINLESS STEEL THUMB SCREWS
- 4 - STAINLESS STEEL WASHERS
- 4 - STAINLESS STEEL SCREWS

Tools Needed

- DRILL, 3/16" DRILL BIT AND PHILLIPS DRIVER BIT
- TWO 1/2" WRENCHES (OR PLIERS)

1. Begin the assembly by loosening the stainless-steel bolt from the yoke assembly. **Fig. 1** Adjust the gray dock-mount housing to the desired angle for water flow and tighten bolt to secure in place. We recommend that the angle is adjusted at a 45° angle facing upward toward the surface. Add a washer and nut from inside the housing and tighten using two 1/2" wrenches. **Fig. 2**
2. Secure the dock plate to your wooden or metal dock. Pre-drill pilot holes using a 3/16" drill bit, then secure using drill and Phillips bit to drive the 4 large screws and washers. **Fig. 3**

For optional oscillator installation, continue on page 7

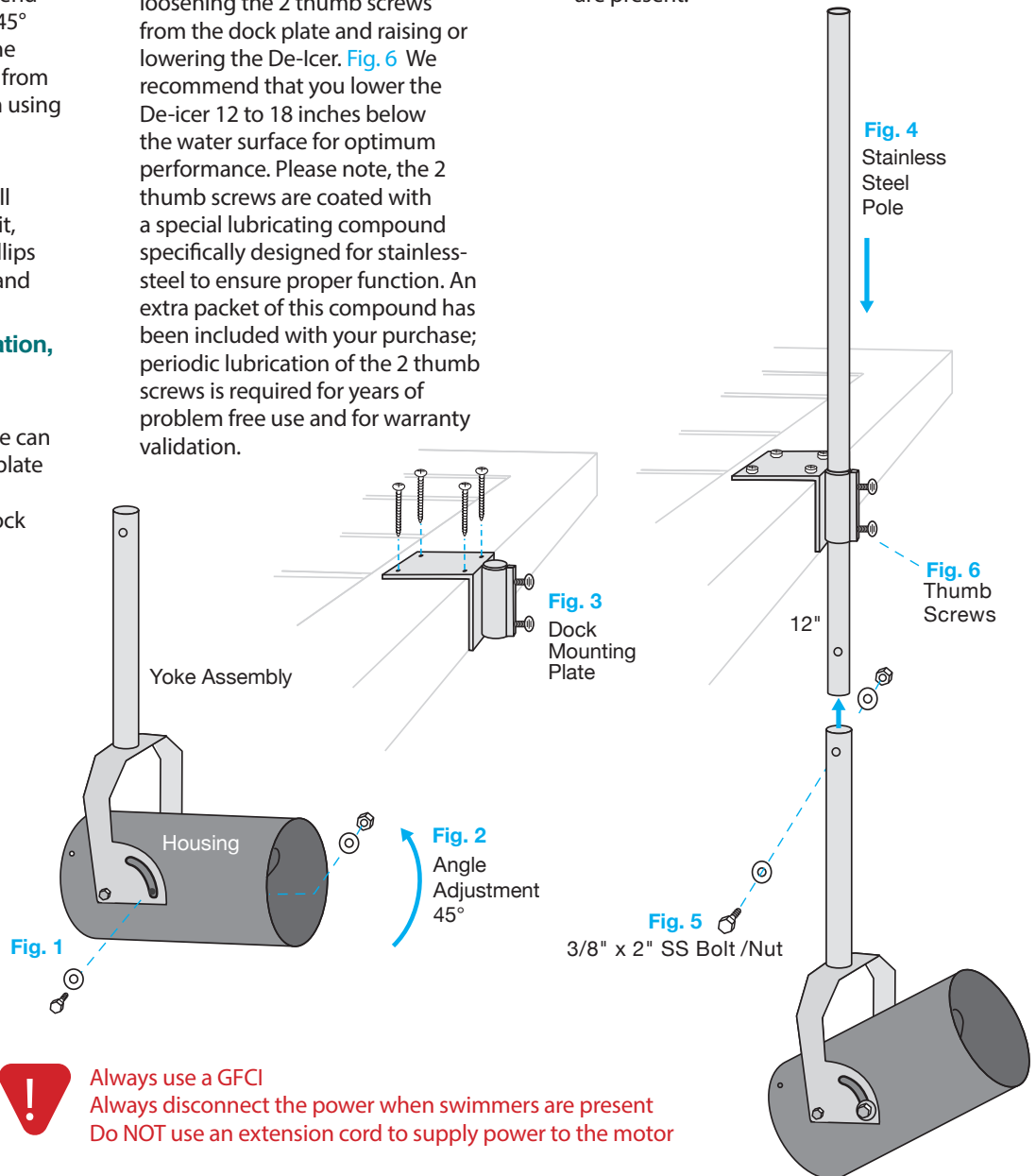
3. Once the dock plate has been secured, the stainless-steel pole can be inserted through the dock plate sleeve. Simply loosen the two thumb screws from the dock plate sleeve, insert the pole from the top through the sleeve by approximately 6 inches, and then re-tighten the two thumb screws. **Fig. 4**

4. Now, slide the yoke assembly over the bottom of the stainless-steel pole and secure with the bolt provided. **Fig. 5**
5. Adjust for varying water levels by loosening the 2 thumb screws from the dock plate and raising or lowering the De-Icer. **Fig. 6** We recommend that you lower the De-icer 12 to 18 inches below the water surface for optimum performance. Please note, the 2 thumb screws are coated with a special lubricating compound specifically designed for stainless-steel to ensure proper function. An extra packet of this compound has been included with your purchase; periodic lubrication of the 2 thumb screws is required for years of problem free use and for warranty validation.

6. Finally, power can be supplied to your De-Icer utilizing a standard 110 volt receptacle protected by a GFCI. Extension cords should not be used. Disconnect power when swimmers are present.



For repositionable installation along longer docks, consider fastening dock mounting bracket to a 2" x 10" x 24" board using 1-1/4" screws and secure to dock with sturdy C-clamps. (items not included in kit)



Always use a GFCI
Always disconnect the power when swimmers are present
Do NOT use an extension cord to supply power to the motor

Oscillator Assembly and Installation (Dock Mount De-Icer Only)

Our fully programmable oscillator attachment makes moving muck even easier. No need to turn the De-Icer in its mounting; the oscillator does it for you! We pre-program the oscillator to rotate in 20 degree increments every 20 minutes; you set it for any radius you wish. The oscillator attachment can be added to any new or previously installed dock-mounted De-Icer.



Weatherproof control unit allows for start and stop positioning from 0-359°.

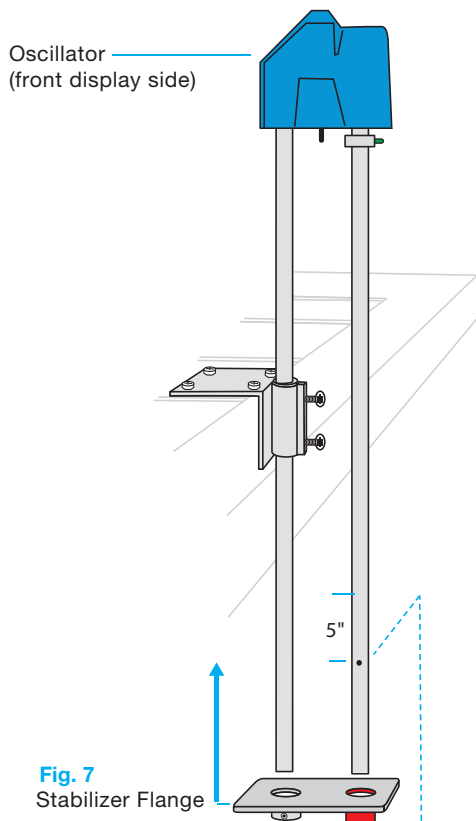
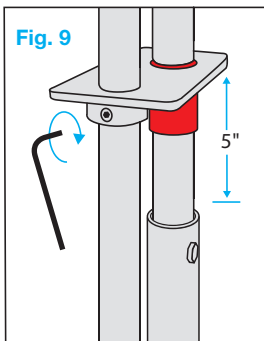


Fig. 8 3/8" x 2" SS Bolt / Nut



Yoke Assembly

For assembly with a new De-Icer, follow steps 1-3 for yoke assembly and dock mounting bracket installation on page 6.

If adding to an installed De-Icer, begin by removing bolt that secures the stainless steel pole to the yoke assembly. The oscillator replaces the stainless steel pole on your dock mount De-Icer.

- Slide the Stabilizer Flange up onto both Oscillator poles, with the red bushing facing downward on the rotating De-Icer pole. Do not tighten at this time. Fig. 7
- Slide the yoke assembly over the bottom of the rotating pole. Secure with the bolt, washers and nut provided. Fig. 8
- Secure the Stabilizer Flange 5" from the upper edge of the yoke with the supplied hex wrench. Fig. 9

0°- 359° Sweep

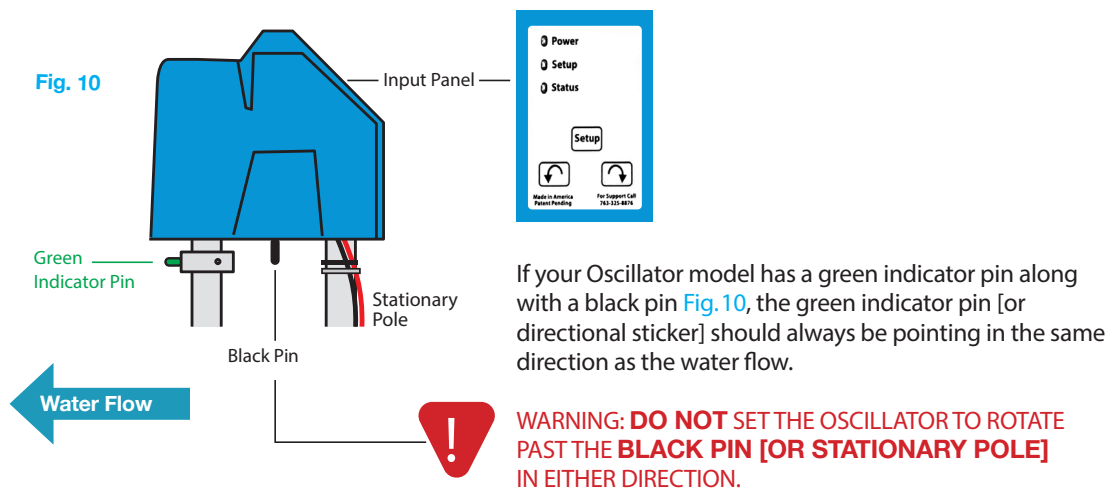
See back for setting the De-Icer controls



Always use a GFCI
Always disconnect the power when swimmers are present
Do NOT use an extension cord to supply power to the motor

Oscillator Programming Instructions

1. Plug in - green power light will be ON
2. Press Setup button - red power light will come ON
3. Press and hold button with arrow pointing right, until desired end point is reached
4. Release button - red light will flash fast.
5. Press Setup button to lock position - red light will stop flashing.
6. Press and hold button with arrow pointing left until desired end point is reached. Release button - red light will flash slow.
7. Press Setup button twice - red light goes out, green power light comes ON. Settings retained even after powered off.



**NOTE: Oscillator will rotate about 20 degrees every 20 minutes.
For additional help with setting the Oscillator, call (763) 325-8876.**

The Scott Aerator Awesome Warranty

All standard Scott Aerator products are unconditionally warranted for five years against motor defects in materials or workmanship, under normal operating conditions. All other product components are warranted for one year from date of purchase. Scott Aerator will repair or replace failed parts under warranty when the defective unit is returned to the factory, shipping prepaid, and factory inspection establishes that the part was defective. The unit must be returned to the factory prior to shipment of replacement parts. All parts replaced under this warranty will be returned with shipping prepaid. Scott Aerator will not be liable for consequential damage nor for any costs associated with removal or attempts to repair components in the field.



Made in America



13245 Barry Street, Holland, MI 49424
scottaerator.com information@scottaerator.com
800-WATER-45 (800-928-3745) (616) 392-8882