

Assembly Instruction

Scan for Assembly Instruction Video



FantasMall Arcylic Display Case
for LEGO® Collections

FANTAS

Read instructions before assembling!

Warning: Do not let children use or play with the parts!



For AGE 12+ only!
CHOKING Hazard
Small Parts.

Keep away from children and pets!

List of Parts



Corner Connector



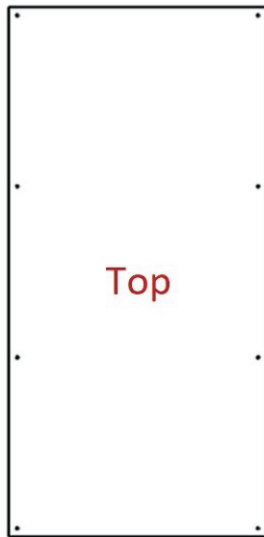
L-Shape Connector



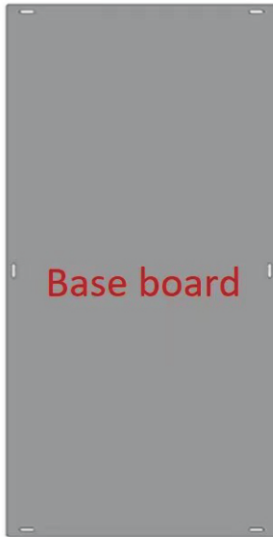
Pin



Pin-Sleeve



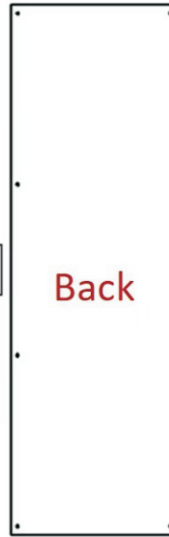
Top



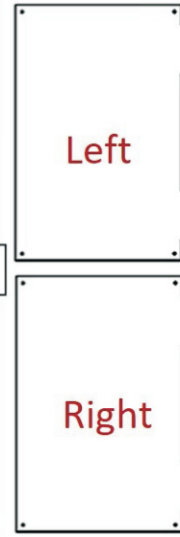
Base board



Front

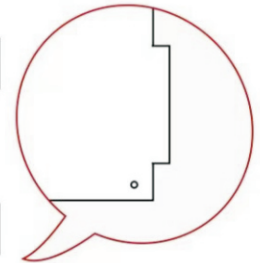


Back



Left

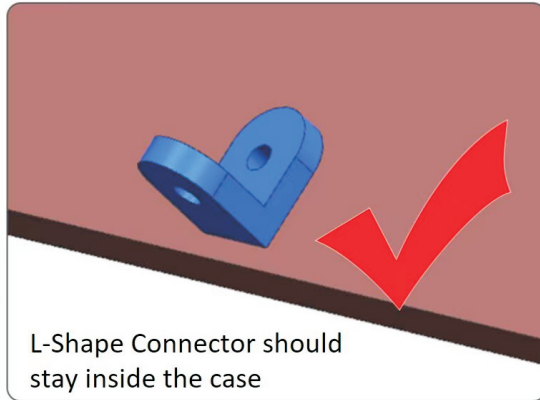
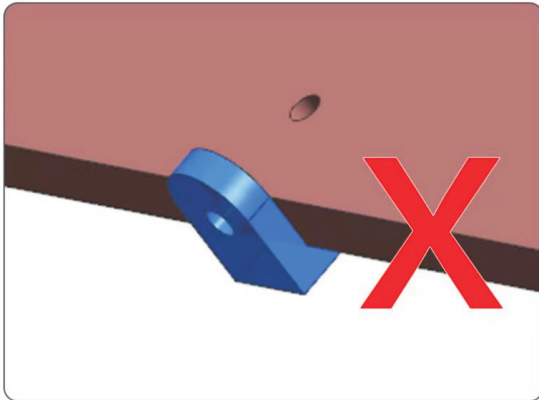
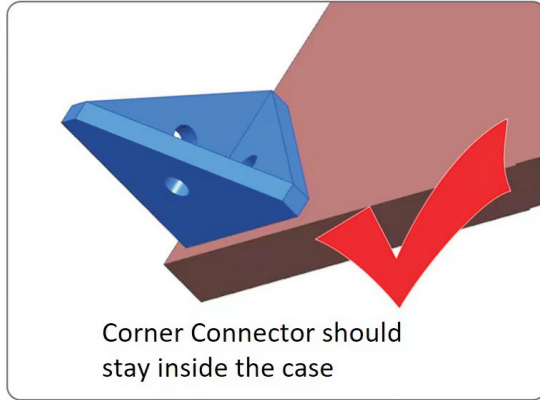
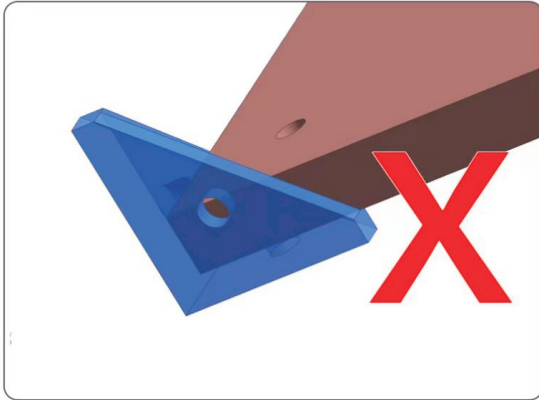
Right



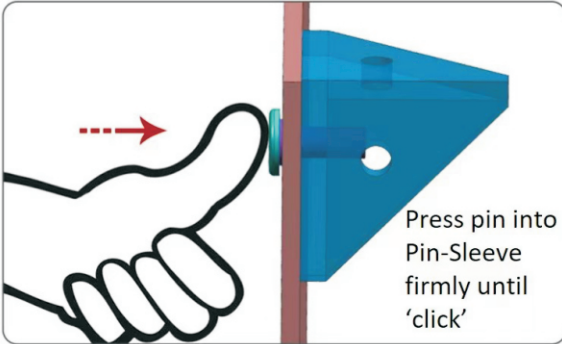
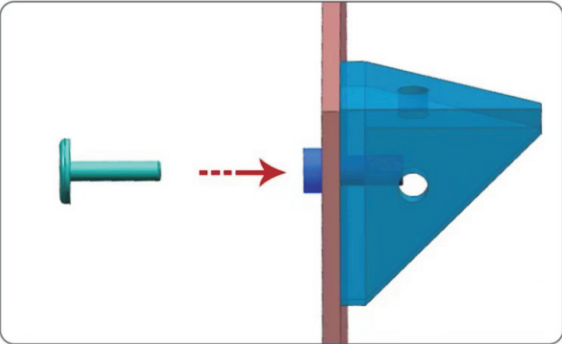
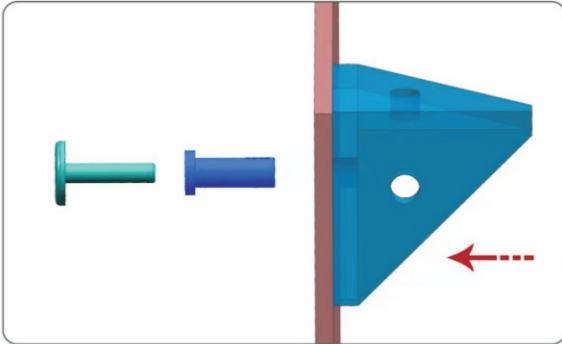
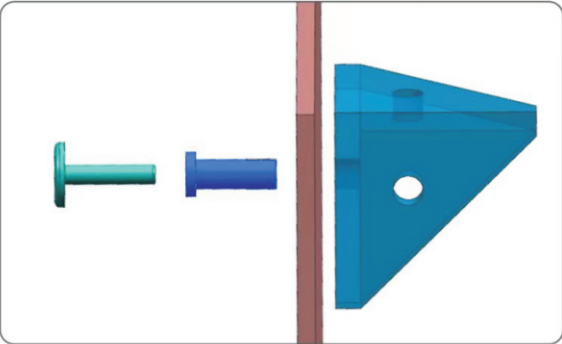
Bulge side of panels are facing base board

Note: Front/back boards are identical, left/right boards are identical.

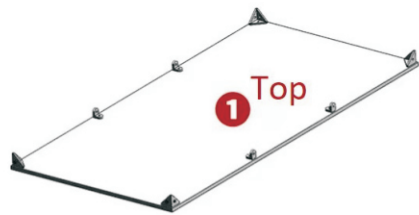
Connector Location



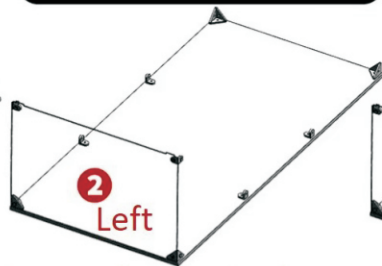
Pin-to-Connector



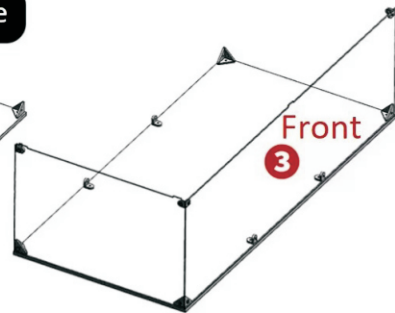
Panel Assembly Sequence



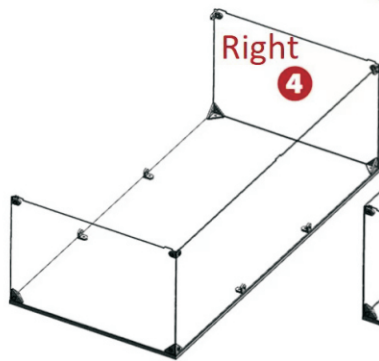
(a) Secure connectors to the top board



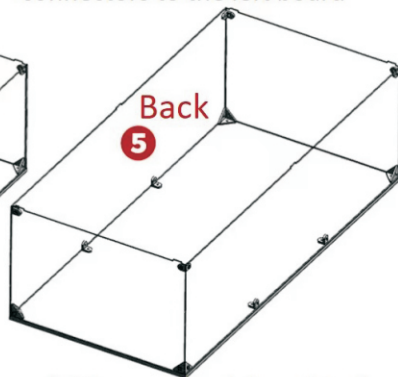
(b) Connect left board to the top board and secure L-Shape connectors to the left board



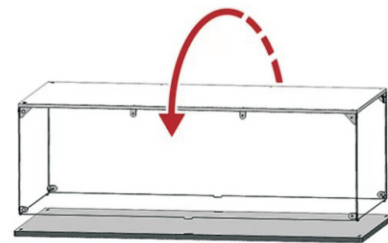
(c) Connect front board to the top board and secure L-Shape connectors to the left board



(d) Connect right board to the top board and secure L-Shape connectors to the left board



(e) Connect back board to the top board and secure L-Shape connectors to the left board



(f) Flip the base and secure it on the base board

FANTAS

Contact:
support@fantasmall.com