

# Bluelce Cold Cryotherapy Unit

SKU: CTY243

Prefer watching videos?

We've got you covered!

Visit our YouTube @BraceDirect or scan the QR code



## Instructions For Use

**Step 1.** Making sure the machine is unplugged, fill with cold water to the “Water” line indicated in the reservoir.

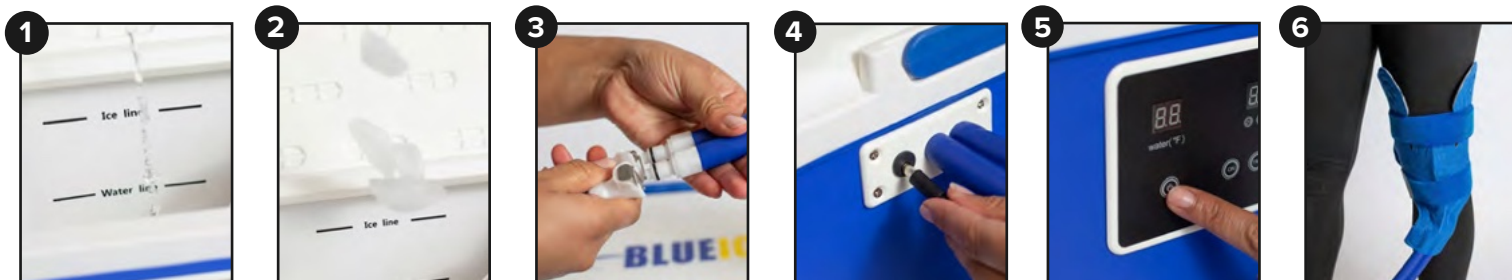
**Step 2.** Fill with ice or frozen water bottles to the “Ice” line indicated in the reservoir.

**Step 3.** Attach the universal pad to the hose by connecting the male and female quick couplings and pushing them together. It is attached securely when you hear and audible click.

**Step 4.** Plug in the AC adaptor in the side of the machine. Plug into a nearby outlet.

**Step 5.** Press the power button located on the digital display on the front of the machine. Choose your setting by selecting “On” for continuous run or choose a length of time by pressing “Timer”.

**Step 6.** Position the pad on your body and use the Velcro straps to secure the pad in place. Making sure not to overtighten the straps.



Still need help?  
**Perfect Fit Guarantee!**

Visit our website or scan the QR code to find out more.

### Care Instructions

- Wipe device and air bladder with a damp cloth.
- Do NOT submerge in water.
- Air Dry only
- Do NOT dry clean, iron, or bleach.



# BlueIce Cold Cryotherapy Unit

SKU: CTY243

Prefer watching videos?

We've got you covered!

Visit our YouTube @BraceDirect or scan the QR code



## Troubleshooting: *Prime the Pump*

**Step 1.** Locate the two clear plastic tubes inside the unit; Press the longer tube down firmly several times until water flow begins.

**Step 2.** You will know it is pumping water when you see it flowing back out of the shorter return tube.

1



2



Still need help?  
**Perfect Fit Guarantee!**

Visit our website or scan the QR code to find out more.

### Care Instructions

- Wipe device and air bladder with a damp cloth.
- Do NOT submerge in water.
- Air Dry ONLY
- Do NOT dry clean, iron, or bleach.

