

Cryotherapy Air Pump Ankle Foot Wrap

SKU: CTY181

Prefer watching videos?

We've got you covered!

Visit our YouTube @BraceDirect or scan the QR code



Fitting Instructions

Locate the included compression wrap, gel pack, and hand pump with tube.

**Freeze gel pack at least two hours before use.*

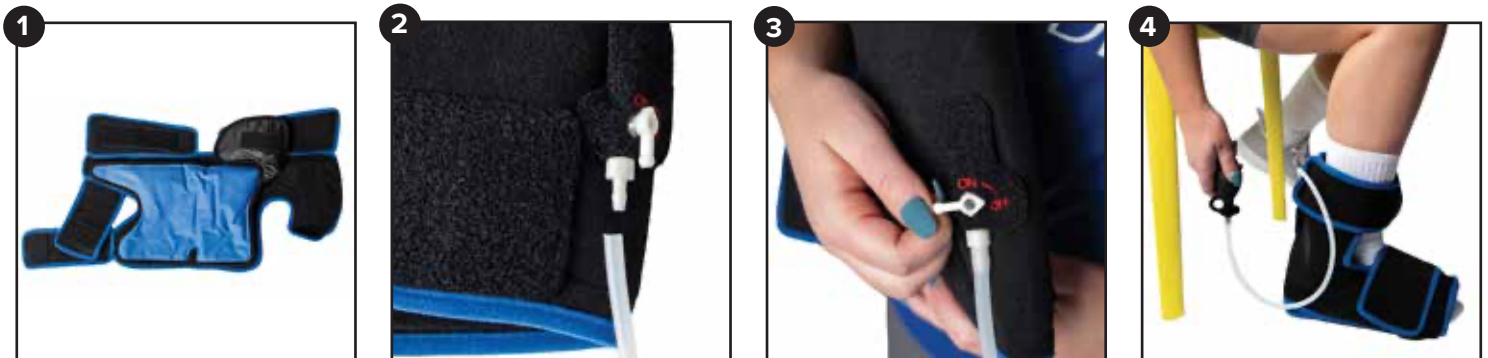
Step 1. Place the frozen gel pack on the compression wrap.

Step 2. Connect the tubing and hand pump to the nozzle on the ON/OFF switch.

Step 3. Place compression wrap and frozen gel pack on the right or left foot and secure with Velcro. Turn the switch to "ON" to begin adding compression.

Step 4. Using the hand pump, squeeze several times until desired compression is reached.

Step 5. When you are finished with treatment, release the pressure before removing. Be sure to replace gel pack into the freezer for the next use.



Still need help?
Perfect Fit Guarantee!

Visit our website or scan the QR code to find out more.

Care Instructions

- Hand Wash with a 50% Alcohol/Water Mixture
- Rinse and Air Dry.
- Do NOT dry clean, iron, or bleach.

