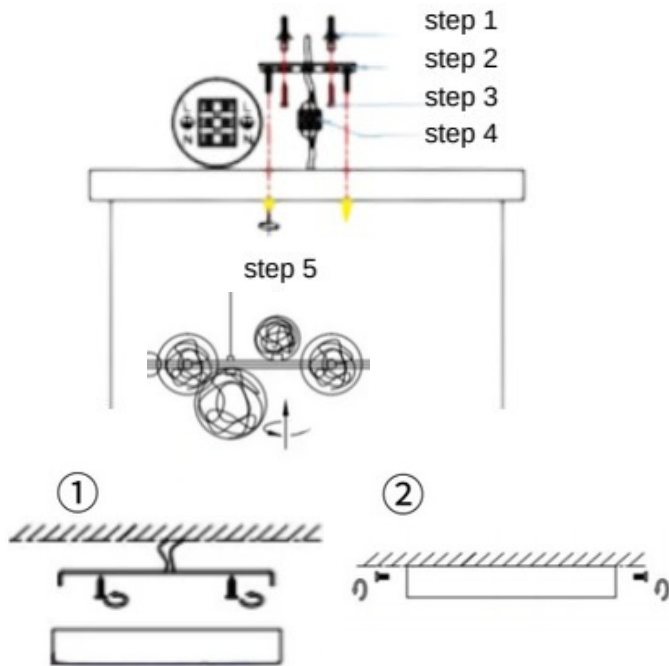




WV206

# WV206

Minimalistisch Metall Linear Schwarz  
Pendelleuchte Esszimmer



- 01** Drill holes in the wall and insert the expansion head. Unscrew the upper part of the lamp body with its own ceiling and lower cover and screw the holes in the lower cover to the wall.
- 02** The lamp body is mounted on the wall and aligned with the hole of the hanging board, then the screw of the hanging board is screwed in to fix it and it can be used after the test light is normal.

## Cautions on installation and use:

To avoid the risk of electric shock, installation must be carried out by a qualified electrician and the following points must be observed:

Please read the instruction manual carefully before installation and use, and keep it in a safe place after use for future

Please ensure that the lamps are securely mounted or positioned.

Wear gloves when installing and servicing lamps.

All electrical connections must comply with local electrical safety regulations and must be installed and maintained by a qualified electrician.

Do not install the luminaire on limy or wet floors.

- Unless otherwise specified, it is strictly forbidden to use the product in a humid environment.
- Be sure to replace the light source in accordance with the specifications and types indicated on the product label, otherwise the product may be damaged and a safety accident may occur.
- For electrical appliances connected to the main power supply, there must be a power switch and all terminals must be firmly connected.
- For luminaires with earth leads, please connect the earth leads securely. Professionals should select the appropriate circuit breaker from the nameplate, lamp label and this manual.
- Lamp replacement: turn off the switch, unplug the power cord, remove the old lamp after it has cooled down, carefully check the label on the lamp socket and this manual, and install a new lamp of the same type and wattage in the lamp socket.
- Cleaning: Turn off the switch, disconnect the power supply, remove the lampshade and wipe dry with a dry cloth. Do not reinstall the lamp until the shade is dry. Do not clean any part of the lamp with corrosive liquids.
- Do not allow water to splash into the lamp holder or inside the lamp body, wipe the lamp body with a clean soft cloth, do not immerse the lamp in liquid.