



## Crate Pallet

1200 x 1000 x 168 mm

Measurements: 1200 x 1000 x 168 mm

Material: HDPE (virgin or recycled)

Weight: 23 kg (incl. rubber plugs)

Static load<sup>(2)</sup>: 5000 kg

Dynamic load<sup>(3)</sup>: 1500 kg

Racking load<sup>(4)</sup>: 1100 kg

Colour: Black (other colours on demand)

Openings: 4 way entry pallet



Load: Different values may be obtained when used under different conditions, such as load type, ambient temperature and standing time. Specific requirements can be identified upon request.

(2) Static load: compression strength with level floor contact and evenly distributed load at 20°C

(3) Dynamic load: on the forklift with selected, evenly distributed load at 20°C

(4) Racking: evenly distributed load along the longitudinal sides resting on two supports at 20°C

## Crate Pallet

1200 x 1000 x 168 mm



### Features



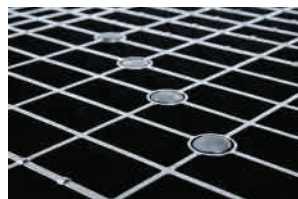
#### Customized

Possibility to put the company logo on the pallet



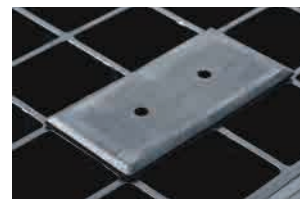
#### Reinforced corners

Especially designed to strengthen the pallet and protect against fork lift impact



#### Mechanical anti-slip

16 rubber plugs in the upper deck provide anti-slip for crates on the deck and for the pallet on the fork lift tynes



#### Rubber feet

Anti-slip

### Option



#### RFID-transponder or tag

Possibility to introduce a RFID nail transponder or tag into the pallet for an errorless, automated inventory and traceability management.