

FUNCTION-FIRST

PERFORMANCE

PLEASE READ BEFORE INSTALLATION: These instructions serve only as a guideline - the installation process for each vehicle may vary depending on make/year/model/trim/etc. It is the sole responsibility of the user to check for suitable product fitment prior to beginning the installation process. The user also accepts that working on or around a vehicle is an inherently dangerous activity, and as such should only be attempted by a qualified automotive technician. By installing or using any Function-First Performance product, the user assumes and accepts all risks.

INSTALLATION INSTRUCTIONS

FFP Shifter Cable Ends (987/997)

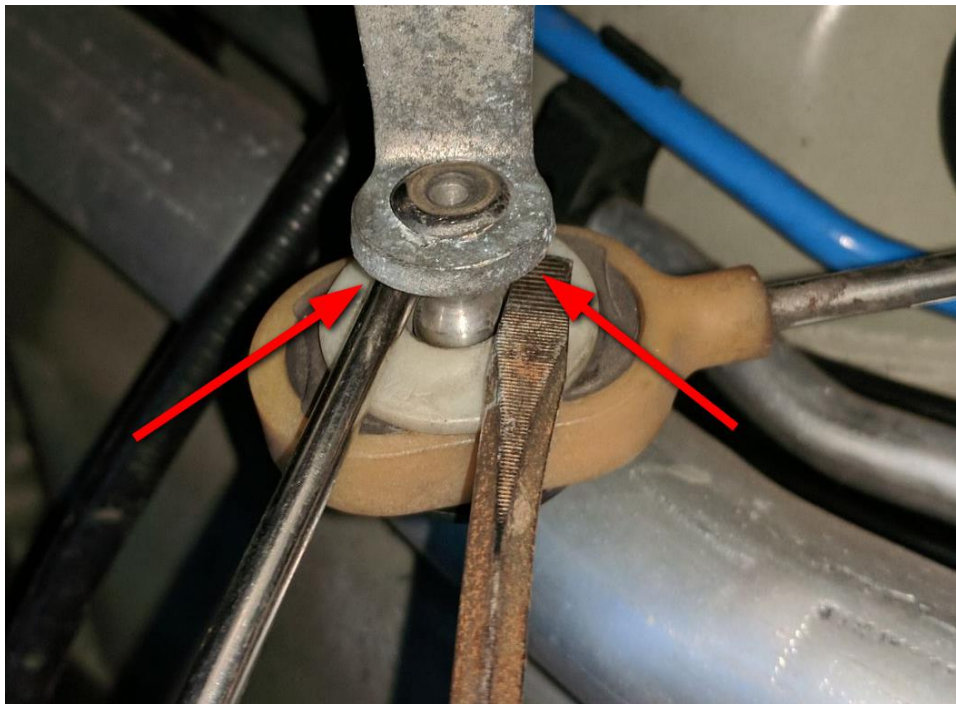


TOOLS NEEDED

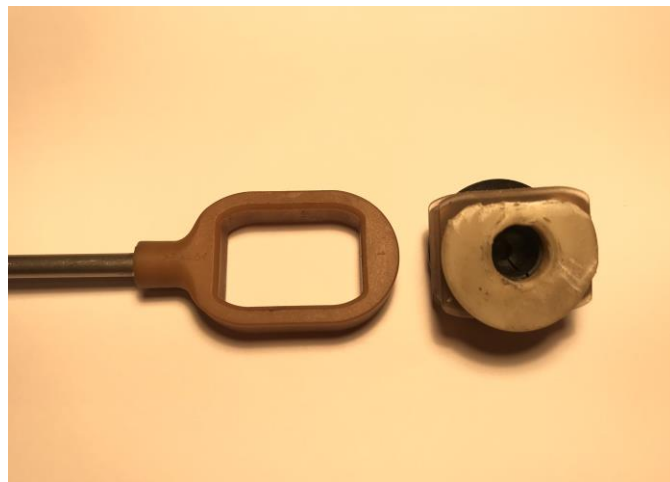
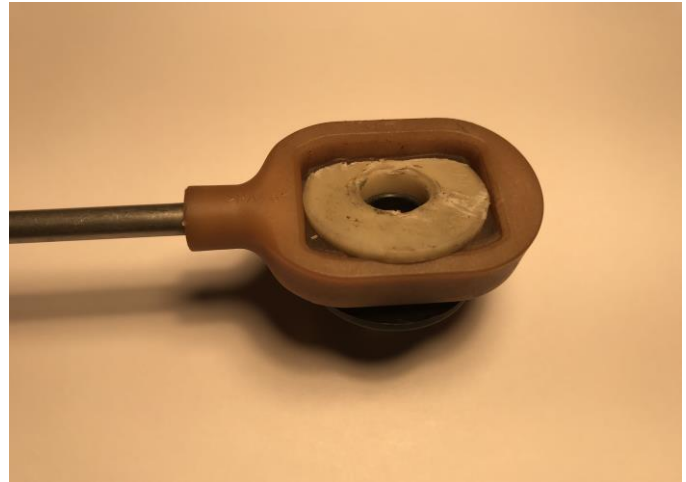
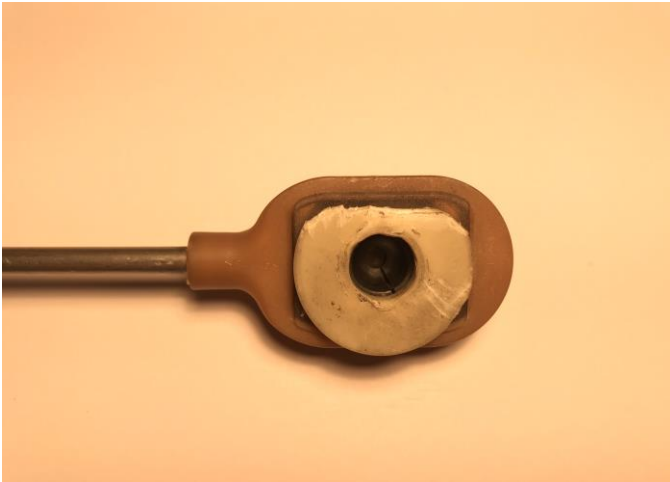
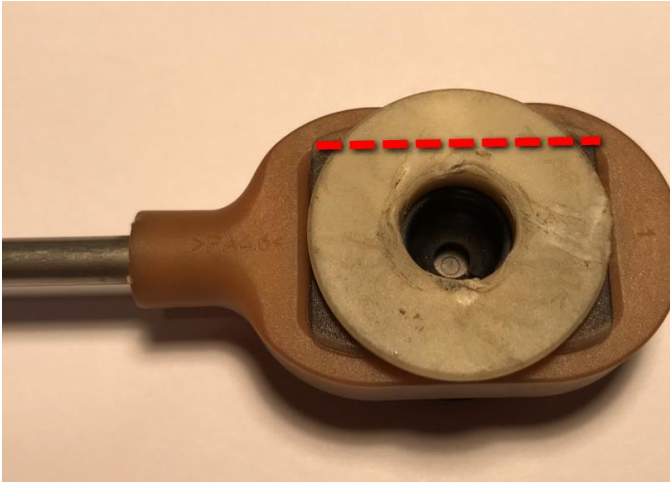
- Safety Glasses
- Torx Screwdrivers
- 2 pry bars or flathead screwdrivers
- Diagonal Cutting Pliers
- Needle Nose Pliers

INSTALLATION

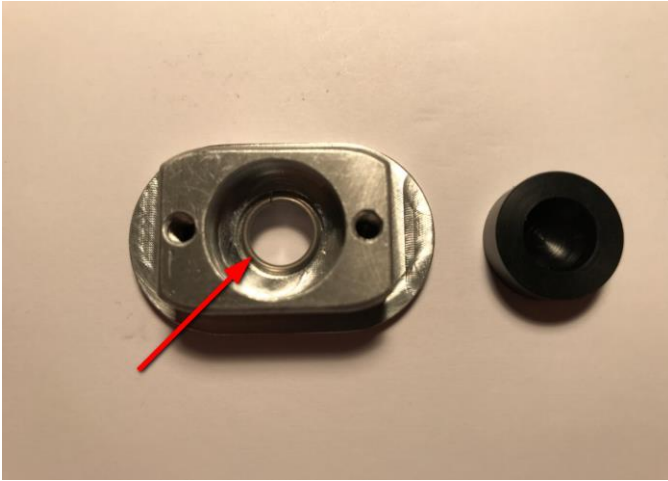
1. Shift the transmission into neutral.
2. Remove the transmission undertrays to gain access to the OEM shifter cable ends.
NOTE: On the 987 models, it may be helpful to remove the rear wheels to gain better access to the shifter cable ends.
3. Use 2 pry bars or screwdrivers simultaneously to pry off the OEM cable ends - situate them on either side of the ball end of the gear selector arm and pry the ends away until released.



4. With the OEM cable end free from the transmission, you can now remove the internals. **Be sure to wear safety glasses.** Snip away the top portion of the inner plastic disc with the diagonal cutters (refer to the dotted line below), taking care to not damage the surrounding plastic frame, and push the internals through the frame. For the next steps, be sure to keep track of which side of the cable end faces the transmission.



5. If not already done so, pre-assemble the new cable ends. Place the round circlip into the recess of the aluminum receiver, then slide the cupped side of the Delrin bushing on top. (A little grease helps to keep everything in place if the circlip or bushing are falling out of place.) Press the completed receiver assembly into the shifter cable end frame, **FROM THE INSIDE (btwn transmission and cable) TOWARD THE OUTSIDE.**



6. Depending on if your OEM cable end frame is squared or rounded, flip the orientation of the cover plate accordingly:
- Rounded frame: The "fingers" go into the cable end to account for the voids (as shown below).
 - Squared frame: The "fingers" protrude away from the center of the cable end.

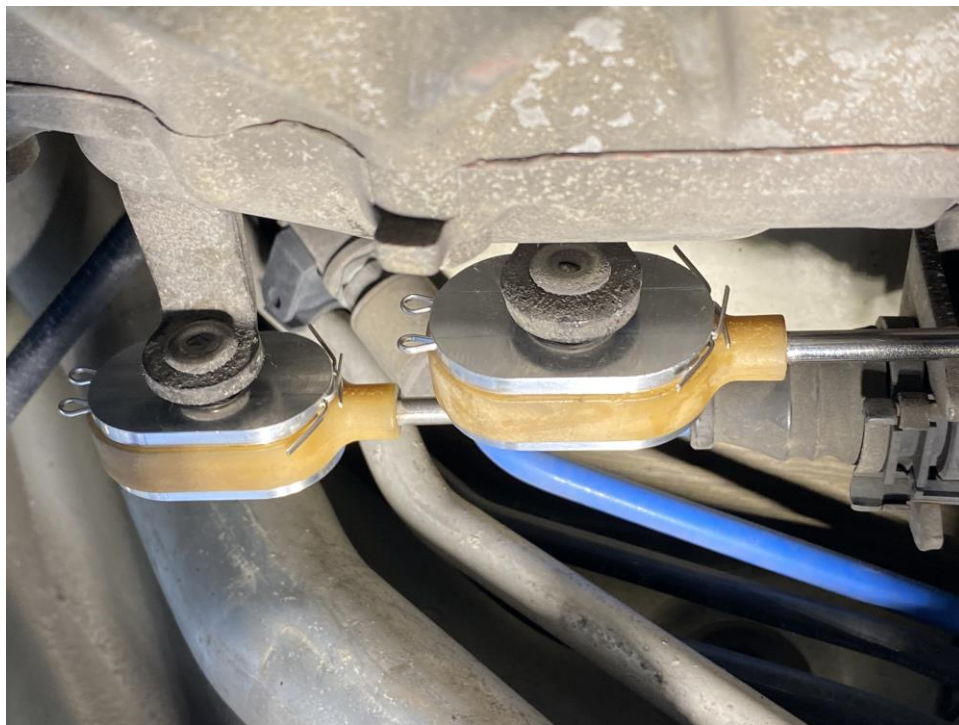
Assemble the new cable end by affixing the cover plate onto the receiver with the torx screws and lock washers.



7. Apply grease to the inside of the Delrin bushing and to the ball-end of the transmission arm.



8. Press the assembled cable end onto the ball-end of the transmission arm – it should take only moderate pressure to pop on. Finish by inserting both cotter pins from the rear of the cable end, securing it in place by curling the ends.
NOTE: On the 987.1 "S" G-speed models, cotter pins are not necessary on the connecting rod that runs above the transmission..



9. Complete above steps for the remaining cable ends.
10. Prior to reinstalling the undertrays, shift through all gears to ensure full and clean engagement without any binding.
11. Done! Enjoy!

BONUS TIP:

- As a “while you’re in there” reliability modification, you can secure the snap-in shifter cable holder blocks to the transmission brackets with zip-ties to ensure they do not pop out.

