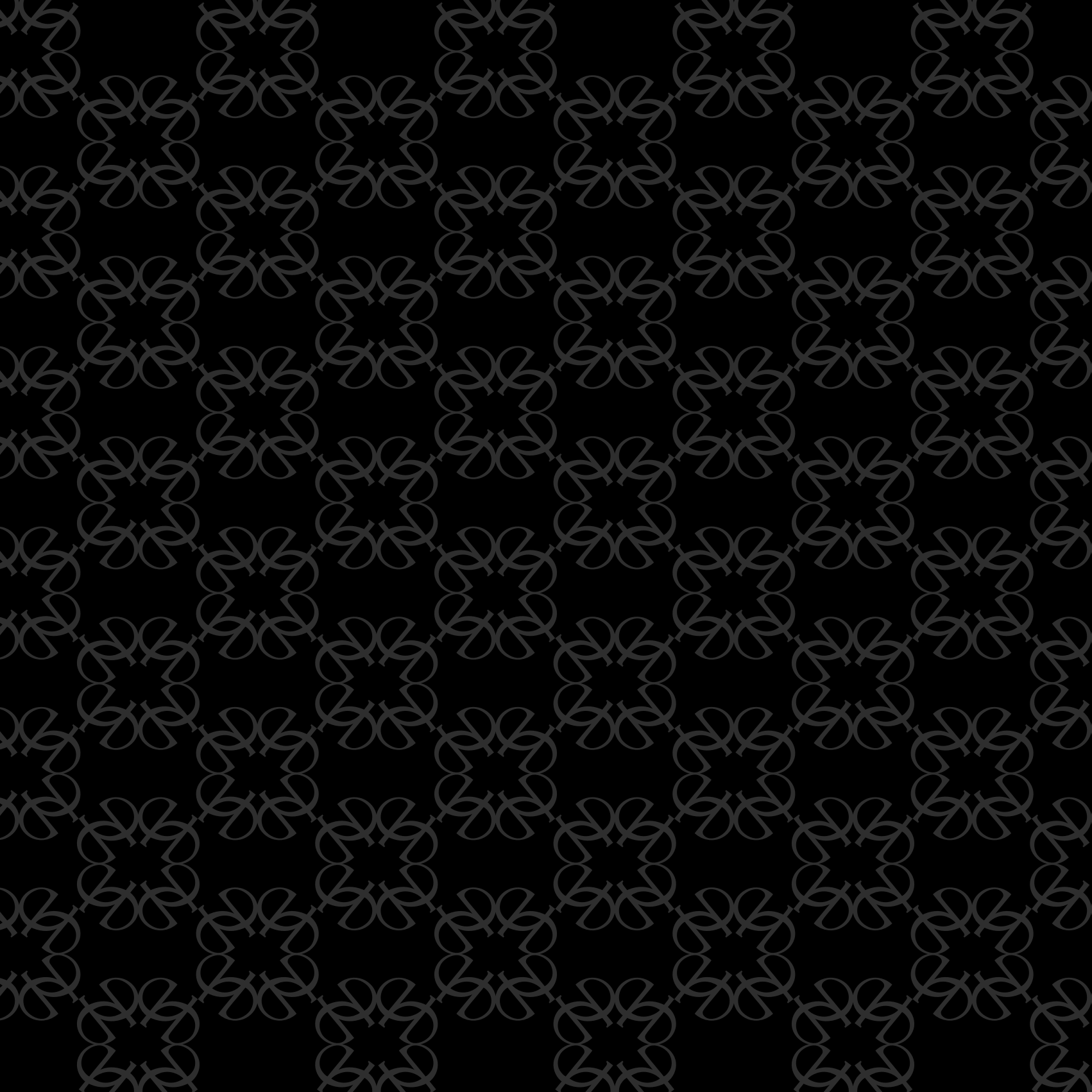


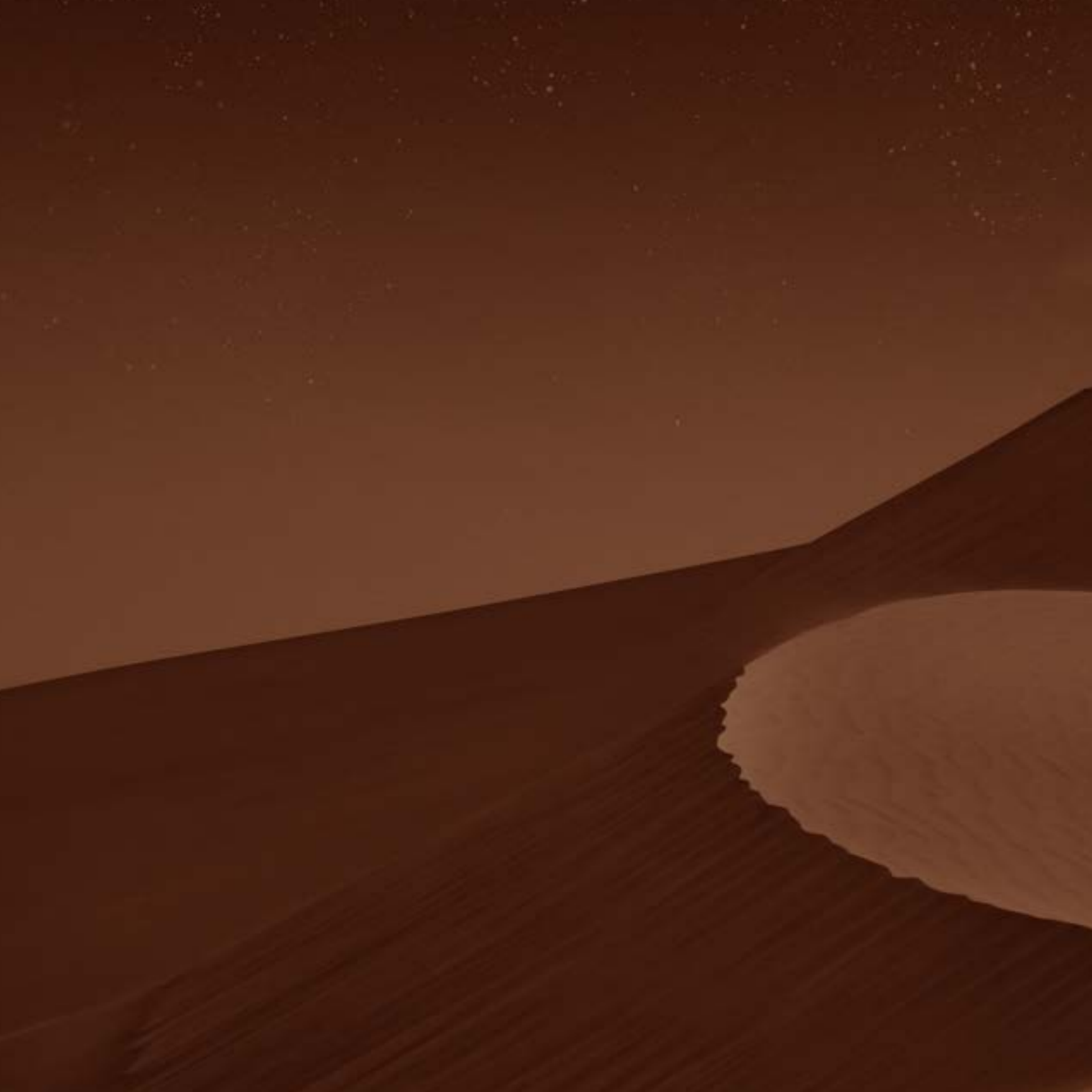


ELIE SAAB

MAISON

NIGHTS OF WONDER







**ELIE SAAB**

MAISON

# INDEX

## INTRODUCTION

6

## LOBSTER ARMCHAIR

10

## LEGACY SOFA

21

## ALHENA ARMCHAIR

29

## MONOGRAM TABLE

37

## MONOGRAM CONSOLE

41

## HORIZON BOOKCASE

50

## PEARL LIGHTING

53

## LAYL BED

61

## VALET DE NUIT SYSTEM

66

**THEIA SCREEN**

70

**ARA VANITY**

78

**SHAMS MIRROR**

81

**WARDROBE SYSTEM**

84

**CLAIRE OFFICE DESK**

93

**ECUSSON CONSOLE**

105

**LUNULA TABLE**

107

**EHDEN SOFA**

120

**EHDEN TABLE**

123

**EHDEN SUNBED**

128

**INDEX**



# ELIE SAAB

MAISON

Welcome to Nights of Wonder – an ethereal journey unveiled by ELIE SAAB Maison during Milano Design Week 2024. Inspired by the captivating allure of the Arabian desert and its celestial night sky, each piece in the collection showcases patterns and luxurious finishes that pay homage to the natural wonders of the region.

Crafted with meticulous attention to detail by master artisans in Italy, under the visionary direction of renowned architect Carlo Colombo, the Nights of Wonder collection embodies the DNA of ELIE SAAB, representing the epitome of sophistication and luxury. Innovative designs, infused with the rich heritage of Art Déco, and Italy's unparalleled tradition of craftsmanship, converge to create pieces that reflect ELIE SAAB's commitment to timeless elegance and meticulous attention to detail.







# ELIE SAAB

MAISON

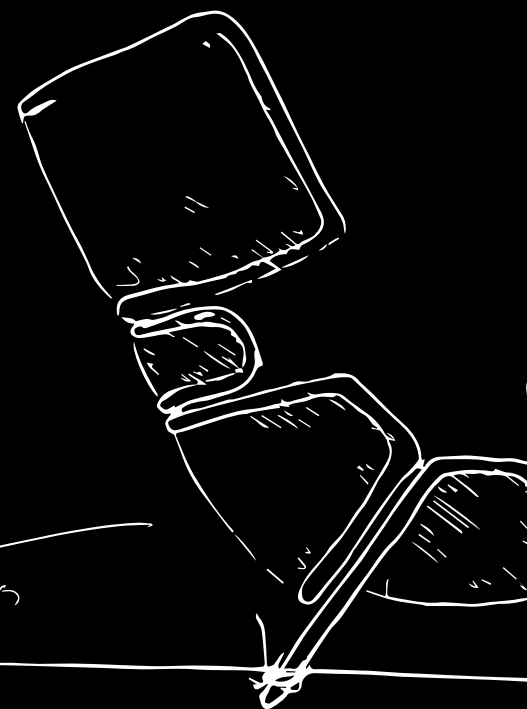
Introducing **LOBSTER** by Carlo Colombo, a captivating art design piece. Inspired by the mystical allure of the Arabian desert and the celestial wonders above, the **LOBSTER** Armchair embodies the spirit of the desert's nocturnal creatures and the breathtaking beauty of the cosmos.

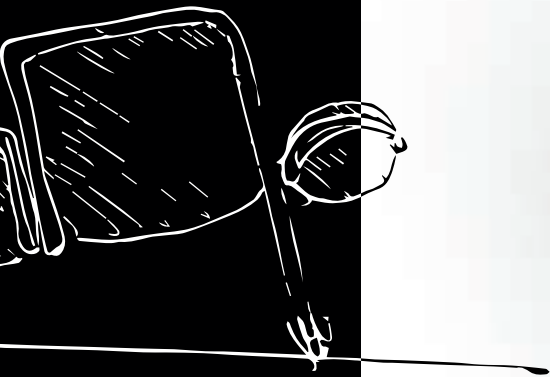
Meticulously assembled steel frames, reminiscent of a lobster's carapace, enclose upholstered parts designed for both comfort and elegance. This exquisite piece not only captures the essence of luxury and sophistication but also offers a unique fusion of artistry and design that transcends time and trends.

NIGHTS OF WONDER



1. 100  
2. 100





## LOBSTER

---

Crafted with innovative design techniques, its sinuous curves evoke desert dunes, while the polished nickel finish mirrors the stars. Crafted with meticulous attention to detail, **LOBSTER** features polished nickel frames enclosing upholstered parts designed for both comfort and elegance. With customizable upholstery options, it adapts to individual preferences and interior decor styles.

















# ELIE SAAB

MAISON

As daylight floods through the windows, casting a gentle glow across the living area, the **LEGACY Sofa** takes center stage, evoking timeless elegance. With new elements and configurations introduced, the sofa remains a timeless centerpiece of the collection.

Alongside, the **ALHENA Armchair** invites you to step into the enchanting world of the Nights of Wonder collection. Inspired by the celestial beauty of the Gemini constellation, it embodies sophistication and duality. Crafted with passion, every curve and stitch reflects the creativity of ELIE SAAB Maison.

NIGHTS OF WONDER

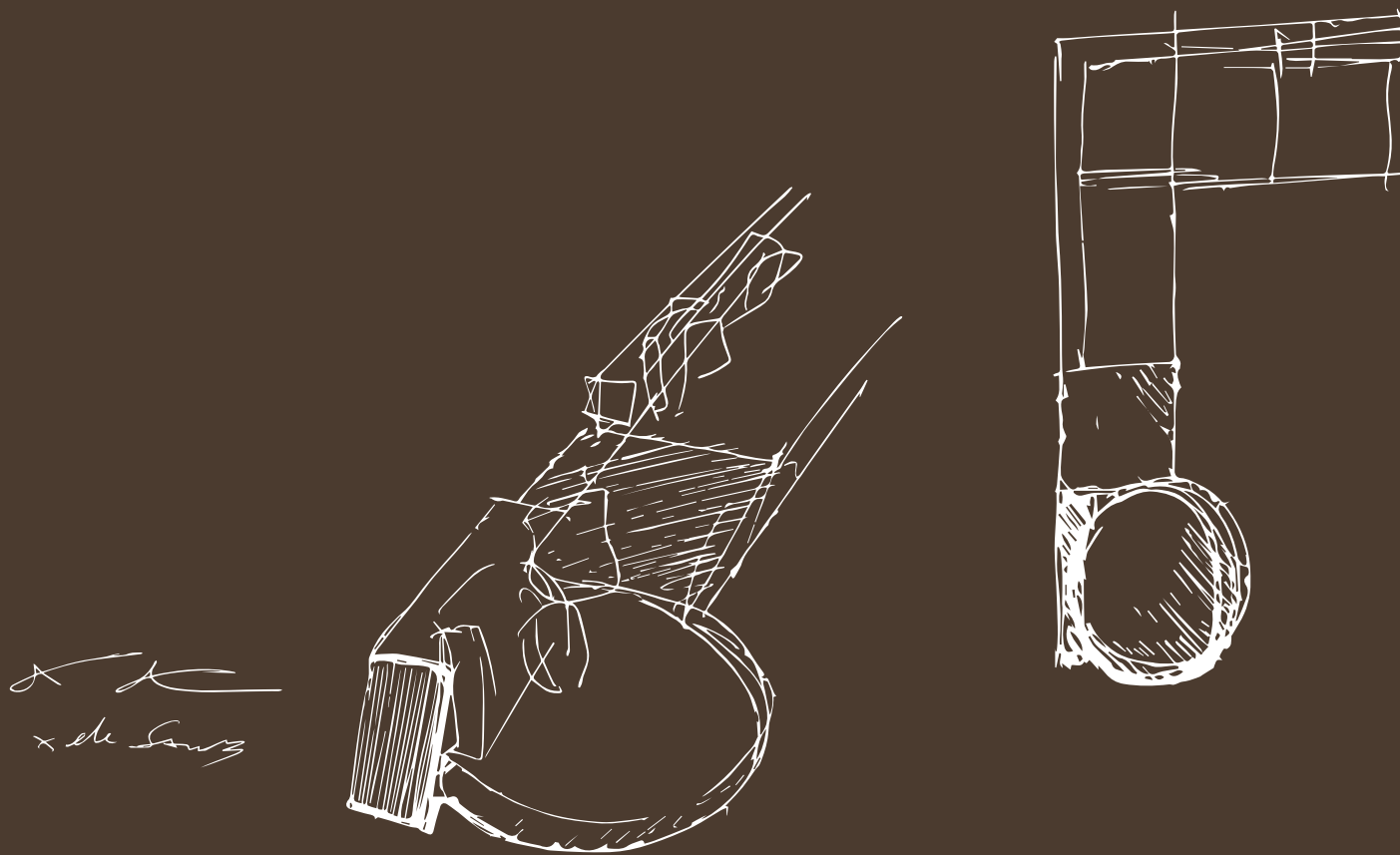








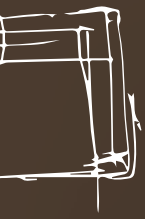




## LEGACY

---

A collection of modular sofas, upholstered in luxurious fabric or leather, offers versatility and flexibility, allowing for customizable seating arrangements. Built with a plywood structure for durability, these sofas feature masterfully crafted armrests in bronzed metal or polished nickel, adorned with leather upholstery, enhancing their luxurious appeal.









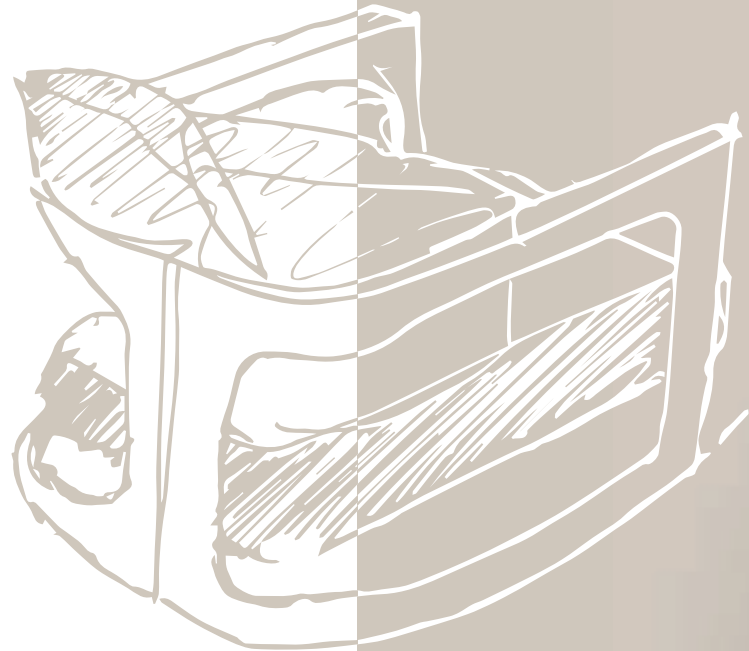












## ALHENA

---

Crafted with precision, its solid ash mocha or lacquered metal frame and plush seat structure offer luxurious comfort. Choose from a selection of leather or fabrics from the collection, adding a unique touch to this exquisite piece.













# ELIE SAAB

MAISON

At the heart of ELIE SAAB Maison's design philosophy lies the concept of family and hospitality, where dining spaces transcend mere spots for dining, transforming into cherished settings where timeless memories are created.

The **MONOGRAM Dining Table**, embodies this ethos with its elegant design and versatile functionality. Crafted with precision and adorned with the signature ELIE SAAB monogram design in its base.

Accompanying the table is the **MONOGRAM console**, a versatile and elegant piece that effortlessly elevates any space with its timeless allure and refined aesthetic.

NIGHTS OF WONDER

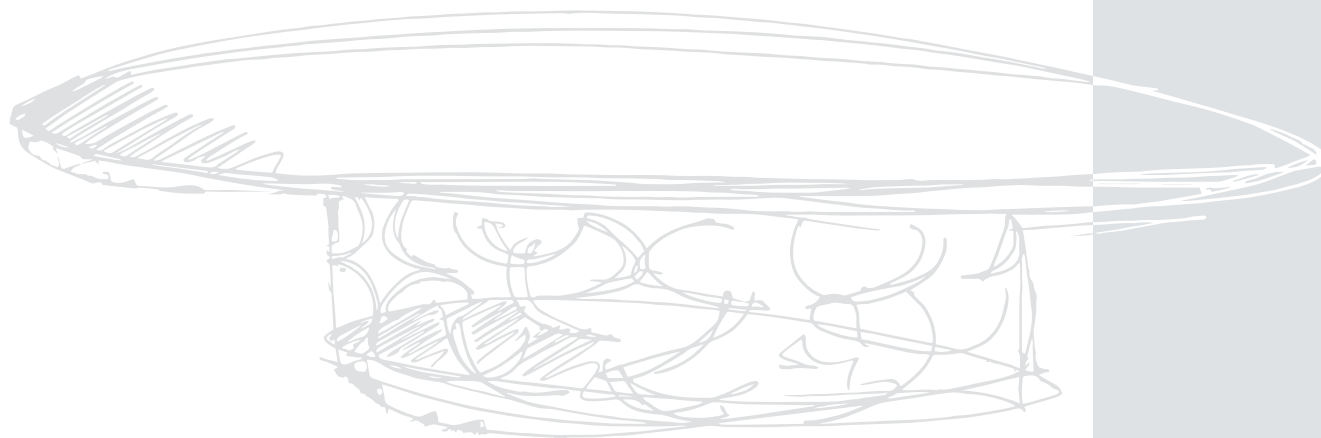


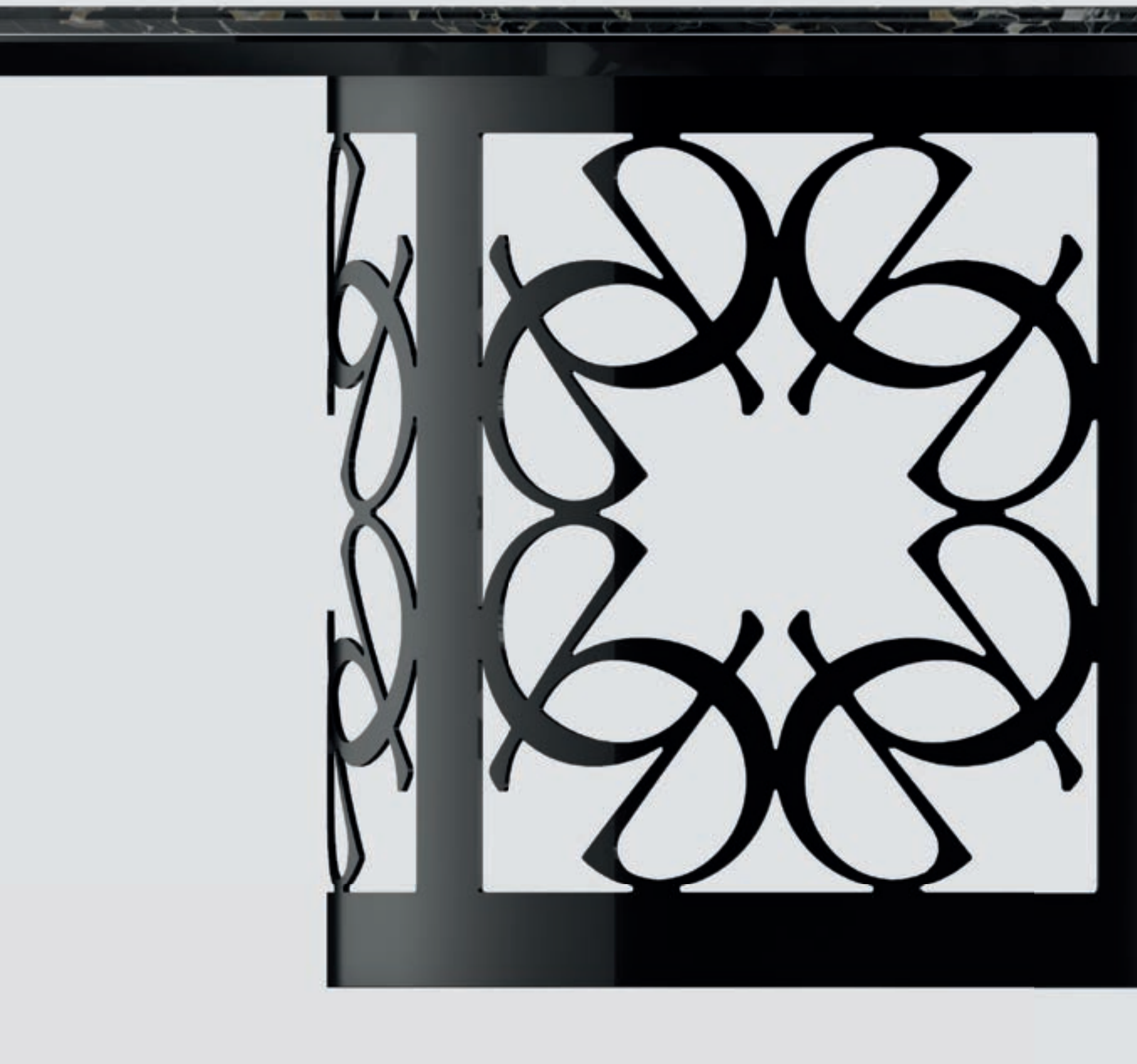




## MONOGRAM TABLE

Featuring the signature ELIE SAAB monogram design in its base, the table is a masterpiece of elegance and sophistication. With options polished nickel, sparkling bronze, polished gold or bronzed metal, each choice exudes luxury and refinement. Customisable with luxurious marble or wood tops from the collection.

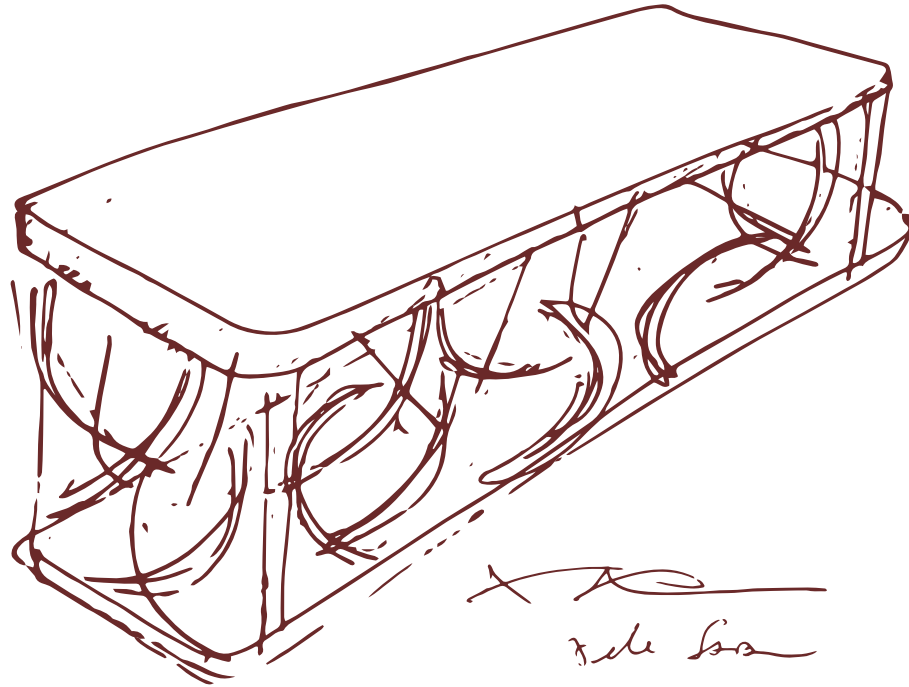












## MONOGRAM CONSOLE

---

Featuring a metal base available in various finishes such as polished nickel, sparkling bronze, polished gold or bronzed metal, each intricately sculpted with the signature ELIE SAAB Monogram, the console exudes sophistication and ingenuity. Top and base are created from the finest marble or lacquered wood from the collection.

















# ELIE SAAB

MAISON

Step into an enchanting space where the **HORIZON Bookcase** stands as a sculptural masterpiece, echoing the shifting sands of the desert with its modular design and captivating structure. Soft lighting from within illuminates the room, creating an atmosphere of inspiration and exploration.

Adding to the allure is the **PEARL chandelier**, casting a spellbinding glow with its grand candelabra adorned with luminescent pearls, enveloping the room in a soft, radiant embrace of beauty and brilliance.

NIGHTS OF WONDER













## HORIZON

A true work of art, covered in leathers from the collection and customizable with a selection of marbles and stones, the bookcase seamlessly blends functionality with elegance. Structure in lacquered wood, available in polished steel or bronzed metal finishing, illuminated by soft lighting.











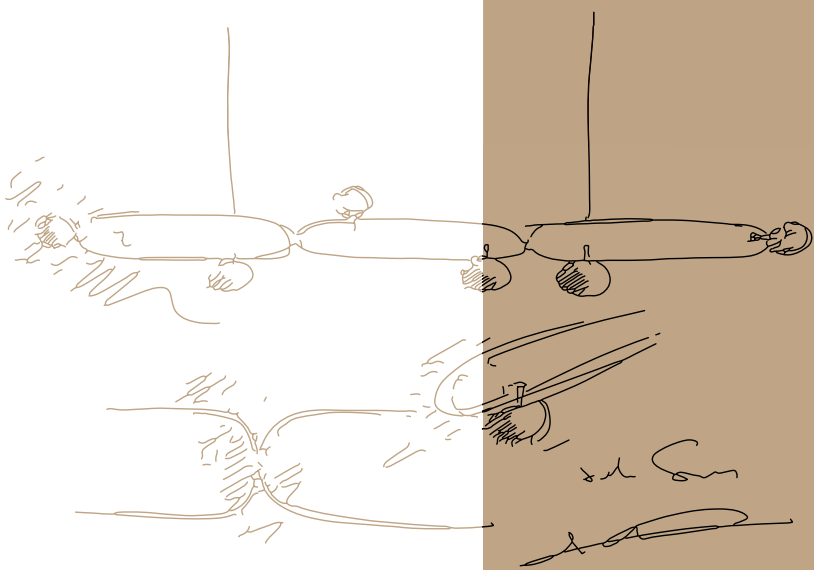
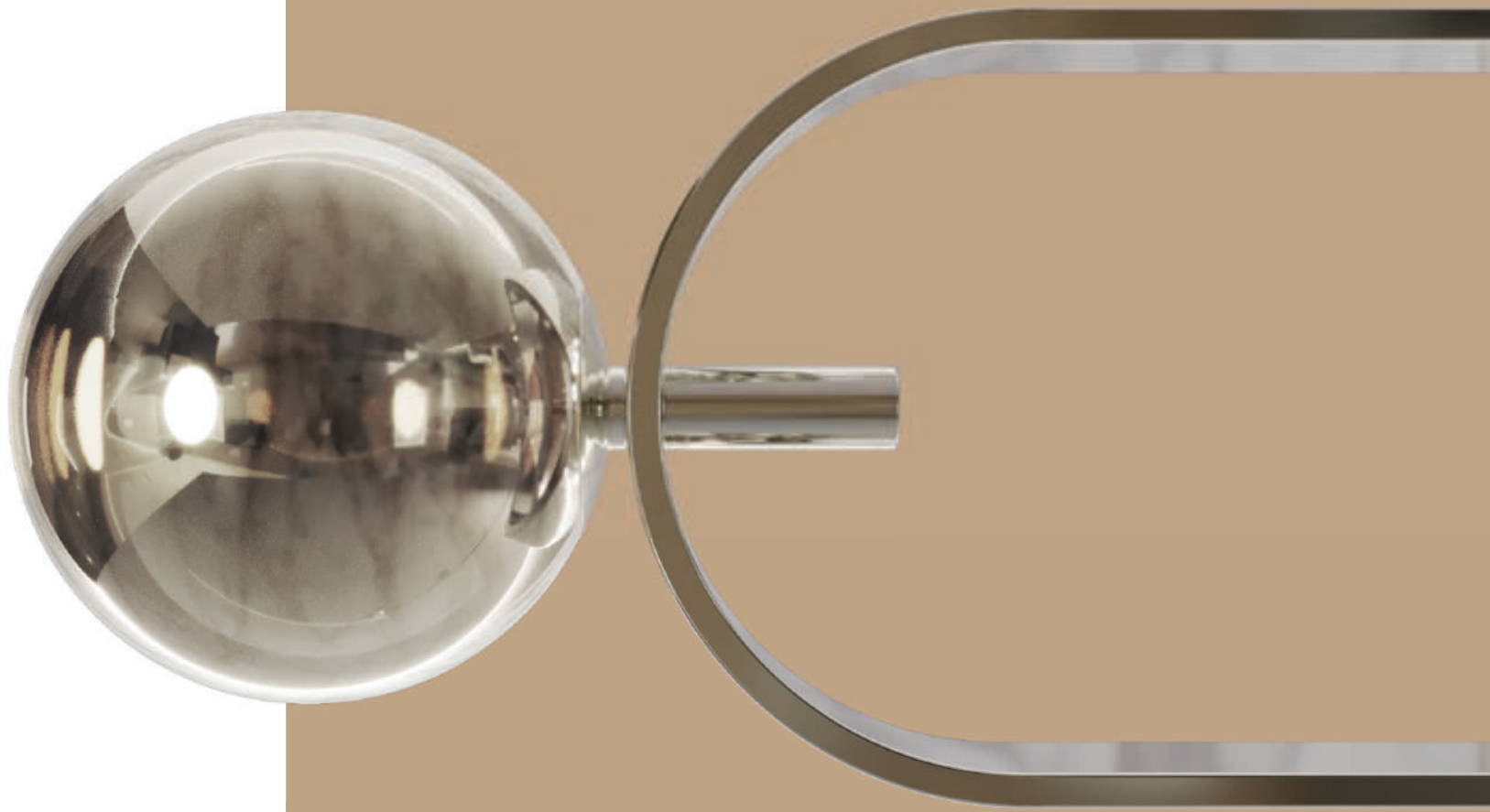
## PEARL

---

Simple, almost essential in its structure that appears light and nearly disappears when the pearls are lit, irradiating the room beneath with light. Available in a variety of configurations with a structure in sparkling bronze or polished gold and applications in bronzed glass.









# ELIE SAAB

MAISON

Inspired by the opulent grandeur of master suites found in palatial residences, the **LAYL Bed** embodies unparalleled luxury and sophistication. Its canopy design evokes a sense of intimacy and indulgence, providing a sanctuary for rest and rejuvenation.

Crafted with meticulous detail, **THEIA Swivel Screen** and **VALET DE NUIT Mirror System** invite guests into a realm of luxury and refinement, transcending mere functionality, embodying elegance and versatility. Experience the magic of the night and immerse yourself in the timeless allure of the Nights of Wonder collection.

NIGHTS OF WONDER













## LAYL

---

Crafted with meticulous attention to detail, its stunning design, available in polished nickel finish, evokes the star-studded skies. The 3D wood or marble platform provides a sense of grounding, while upholstery options from the collection allow for personalisation, ensuring a perfect blend of comfort and elegance.

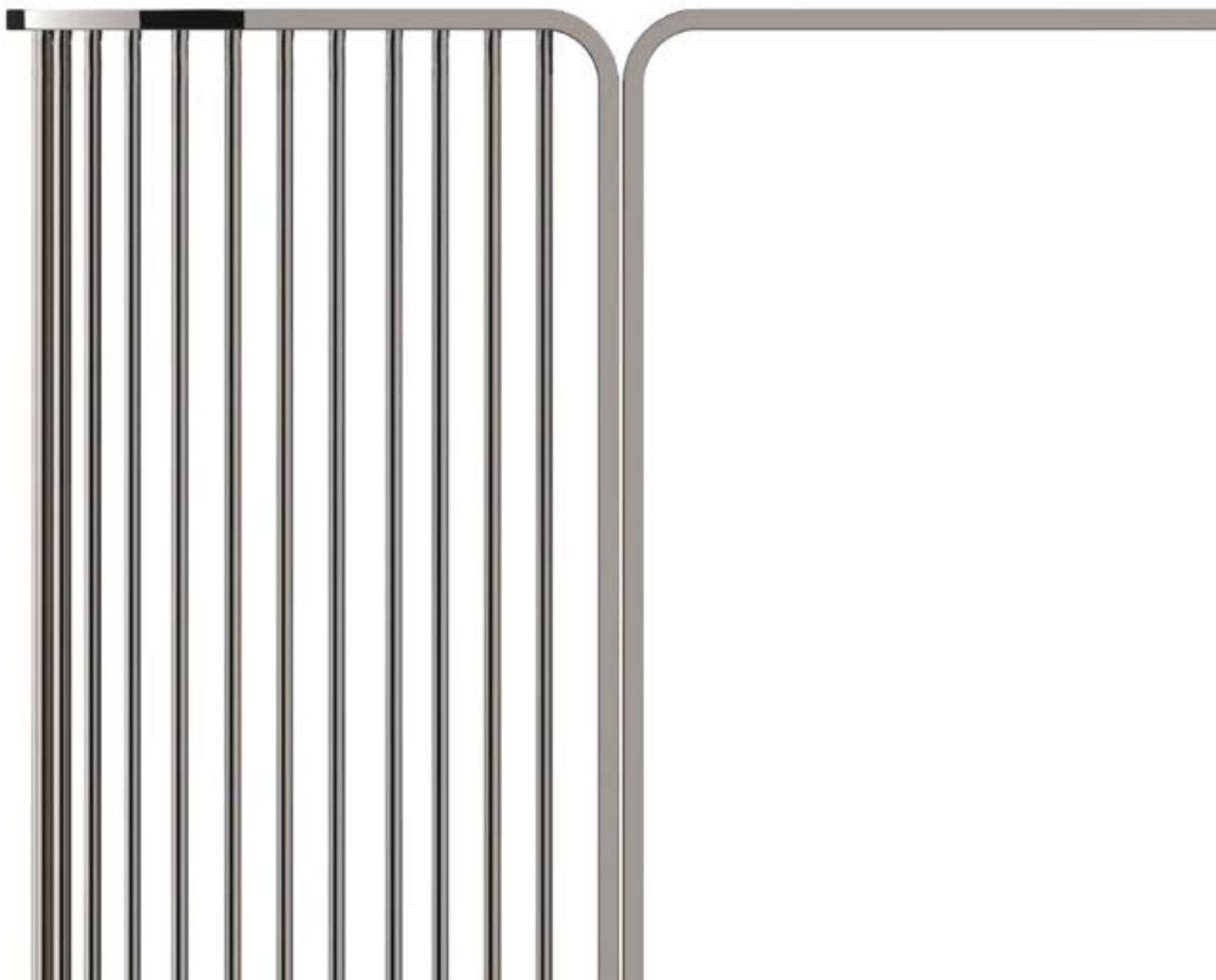




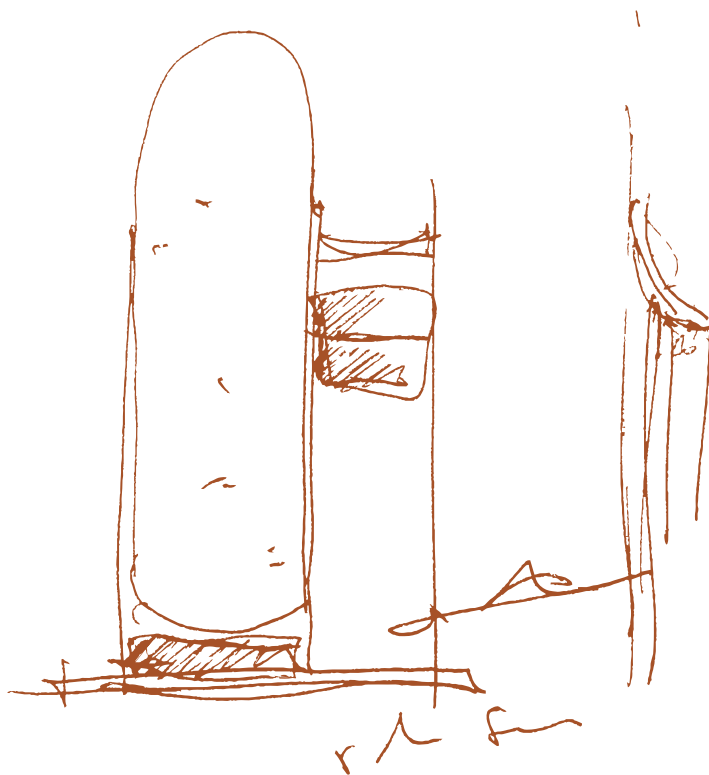












## VALET DE NUIT

---

Serving as a true personal assistant seamlessly integrated into any living space, the mirror system has a structure in bronzed metal or polished nickel finish. Customisable with leather drawer elements and accessories and a base available in all marbles from the collection.













## **THEIA**

---

Crafted with meticulous detail, the swivel screen features a wooden panel frame wrapped in luxurious leather upholstery. Available with mirror inserts or covered with collection fabrics and leathers, each screen is adorned with the ELIE SAAB Monogram metal detail, offering both elegance and versatility.





# ELIE SAAB

MAISON

Enter a world of unparalleled luxury and elegance, where sophistication and grace permeate every corner.

At the heart of this exquisite dressing area is the **ARA Vanity**, named after the brightest star in the sky, embodying the brand's dedication to luxury and refinement.

Paired with the **SHAMS Mirror**, illuminating your space with unparalleled luminosity and elegance, and the **ELIE SAAB Maison wardrobe system**, where luxury meets versatility, your dressing area transforms into a sanctuary of sartorial expression and timeless elegance. Indulge in the ultimate luxury experience.

NIGHTS OF WONDER



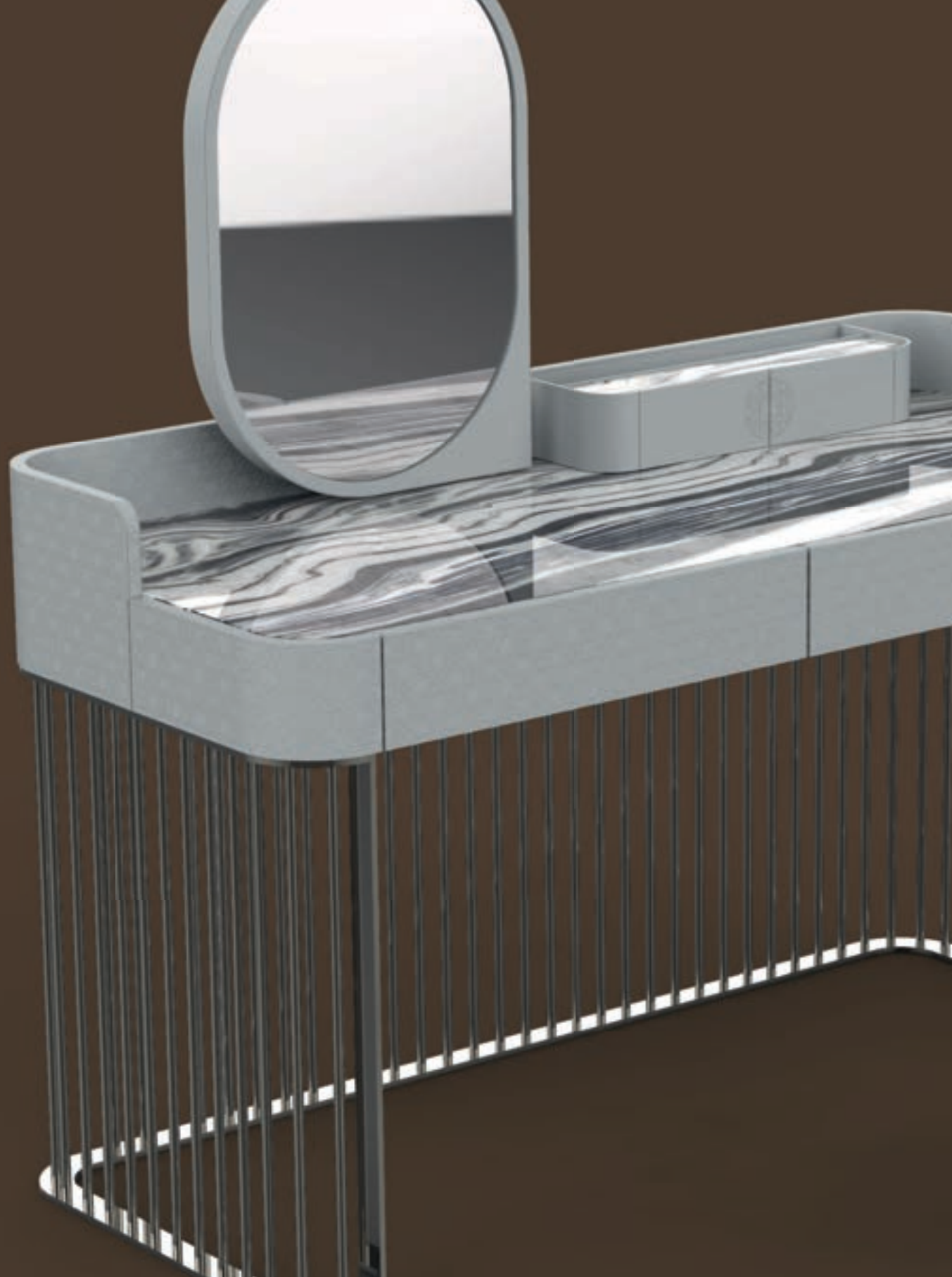
















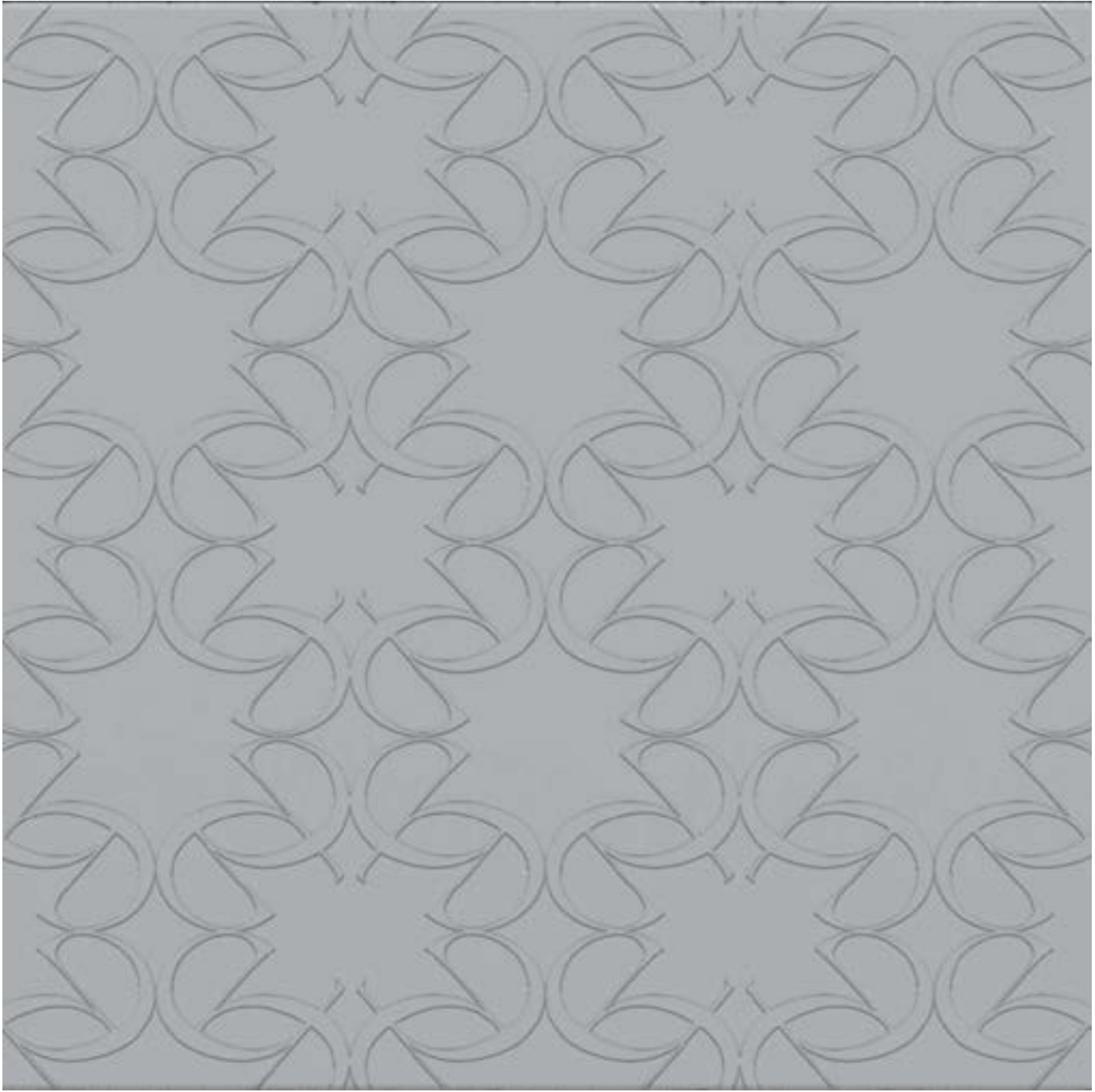
## ARA

---

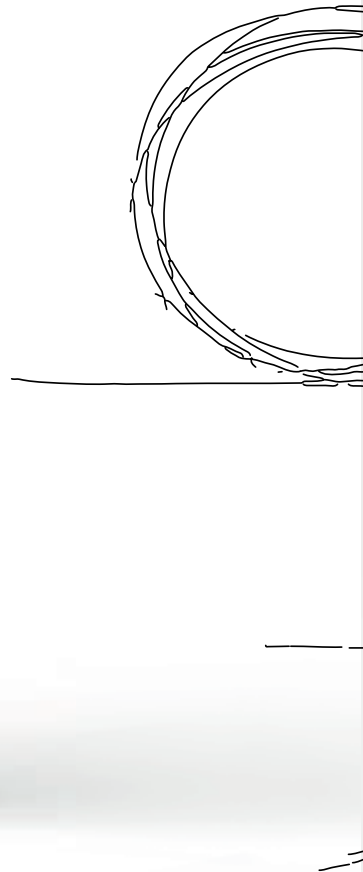
With a gleaming metal base crafted in polished nickel, the vanity is beautifully accented by its leather upholstered frame and opulent marble or wooden top. Balancing both aesthetics and utility, it boasts a swivel mirror and generous storage capacity for beauty essentials, effortlessly blending elegance with functionality.











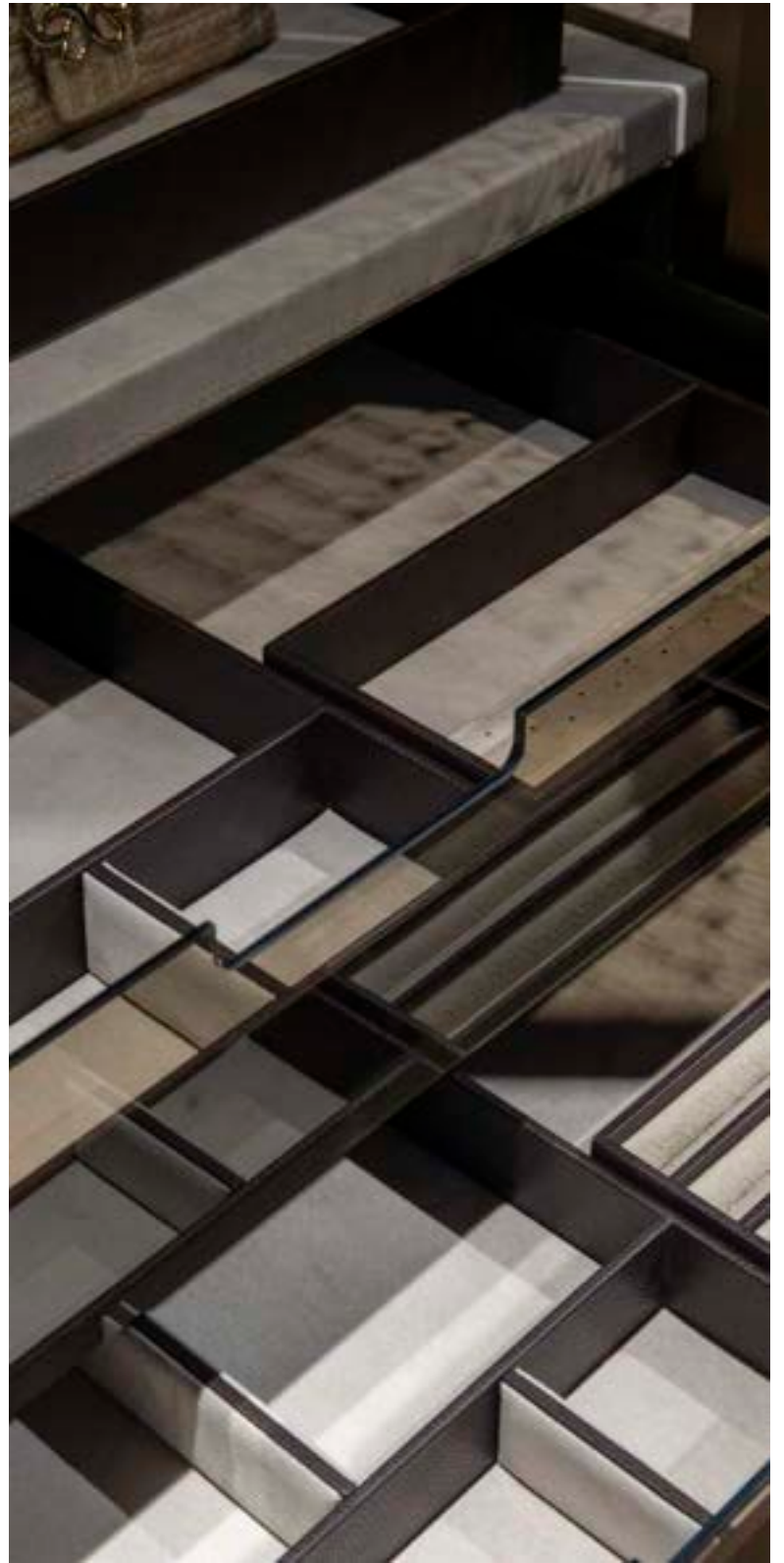
## SHAMS

---

Infusing spaces with luminosity and elegance, the mirrors are available in various sizes and shapes. Crafted with meticulous attention to detail, featuring wood panel frames with luxurious leather upholstery and the iconic ELIE SAAB monogram, the mirrors offer an option for LED backlighting, adding an ethereal glow.











## WARDROBE SYSTEM

---

A pinnacle of luxury and versatility, the modular design offers endless configurations, from doors adorned with the iconic ELIE SAAB monogram to elegant backlit lighting. With accessories designed to hold the most precious items, the system transforms into a dream's space, where sophistication meets practicality in perfect harmony, providing an unparalleled experience of sartorial indulgence and timeless elegance.



# ELIE SAAB

MAISON

In an elegant and prestigious presidential office space, luxury and functionality converge seamlessly. Here, the ambiance exudes opulence and sophistication, with every detail meticulously curated to reflect the epitome of refinement.

The focal point of this distinguished setting is the **CLAIRE Office Desk**, a symbol of prestige crafted to fulfill the desires of an international clientele seeking the perfect synthesis of function and aesthetics. Adding to the allure of the space is the art design armchair **LOBSTER**, with its innovative design and luxurious materials, embodying a perfect blend of elegance and comfort.

NIGHTS OF WONDER

















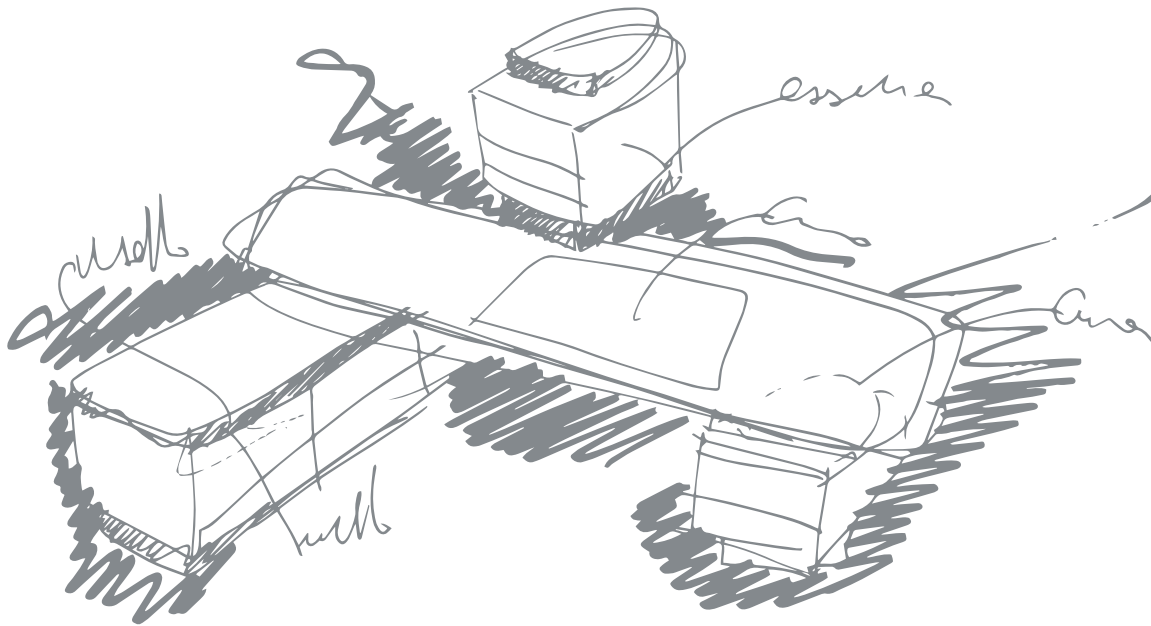
## LOBSTER

---

A masterpiece of art and design that transcends conventional furniture, **LOBSTER** seamlessly blends comfort and sophistication, making it adaptable to luxurious high-end living environments. With customizable upholstery options, it becomes a symbol of prestige, elevating any space with its unparalleled elegance and charm.







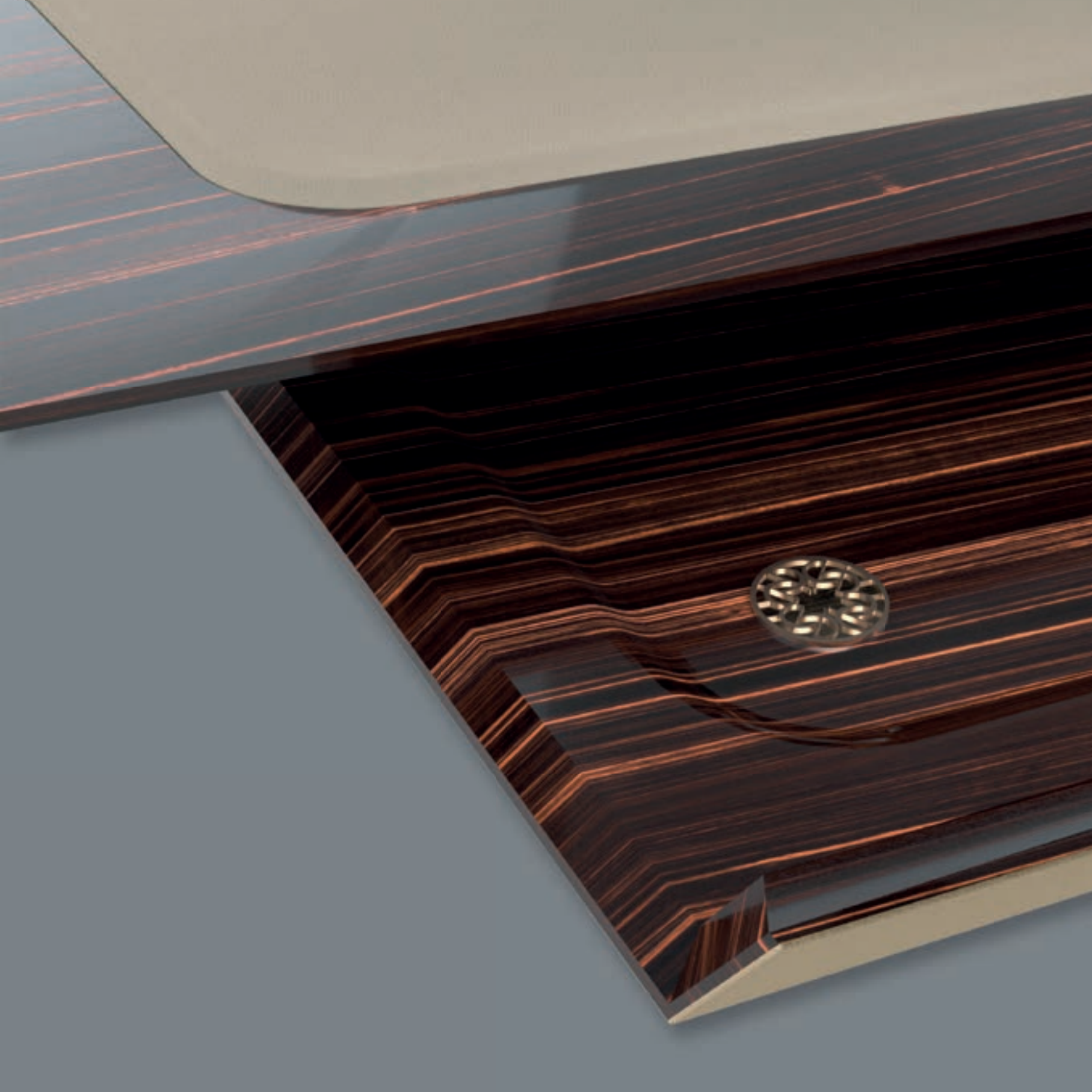
## CLAIRE

---

Crafted from a harmonious combination of marble, polished ebony wood, and sumptuous leather, the office desk exudes opulence at every angle. Its bronzed metal finishings add a touch of refinement, elevating its aesthetic appeal to new heights. Configurable to individual tastes and preferences.





















# ELIE SAAB

MAISON

In a space meticulously adorned with curated elegance, the captivating **LUNULA Dining Table** becomes the focal point, echoing the mesmerizing tones of the desert night sky. Enhanced by the prestigious ELIE SAAB monogram, it emanates an air of sophistication, ideal for hosting memorable gatherings under its luminous glow. Adjacent, the **ECUSSON Console** stands as a symbol of Art Deco opulence, its intricate design further enriching the room's allure. Completing the ensemble, the **PALACE Sofa** envelops the area in luxurious comfort, seamlessly blending with the atmosphere of timeless charm.

NIGHTS OF WONDER













## ECUSSON

---

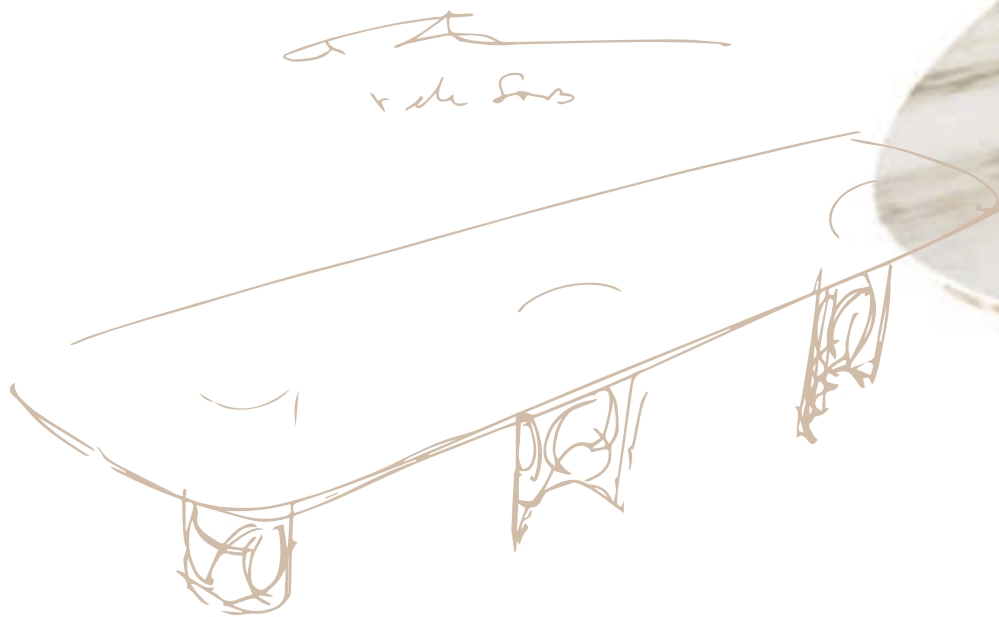
Inspired by Art Deco opulence, this console exudes sophistication with the brand's monogram elegantly incorporated into the base. Offering a choice of metals like polished nickel, sparkling bronze, polished gold or bronzed metal, two drawers and customizable options for marble or lacquered wood tops and base inserts, it epitomizes refined luxury.











## LUNULA

---

With its sleek elliptical silhouette and intricately designed metal base featuring the ELIE SAAB Monogram, this table epitomizes modern elegance. Available in polished nickel, sparkling bronze, polished gold, and bronzed metal finishes, its customizable top can be crafted from luxurious marble or wood.













# ELIE SAAB

MAISON

The **EHDEN Outdoor Collection**, a breathtaking ensemble inspired by the verdant splendor of the legendary Garden of Ehdén, where centuries-old trees whisper tales of ancient mysteries and lush foliage blankets the landscape in a tapestry of green.

Each piece in the collection captures the essence of outdoor elegance and tranquility, inviting you to immerse yourself in the timeless beauty of nature, where every detail reflects the timeless allure of nature and the captivating magic of the Nights of Wonder Collection.

NIGHTS OF WONDER













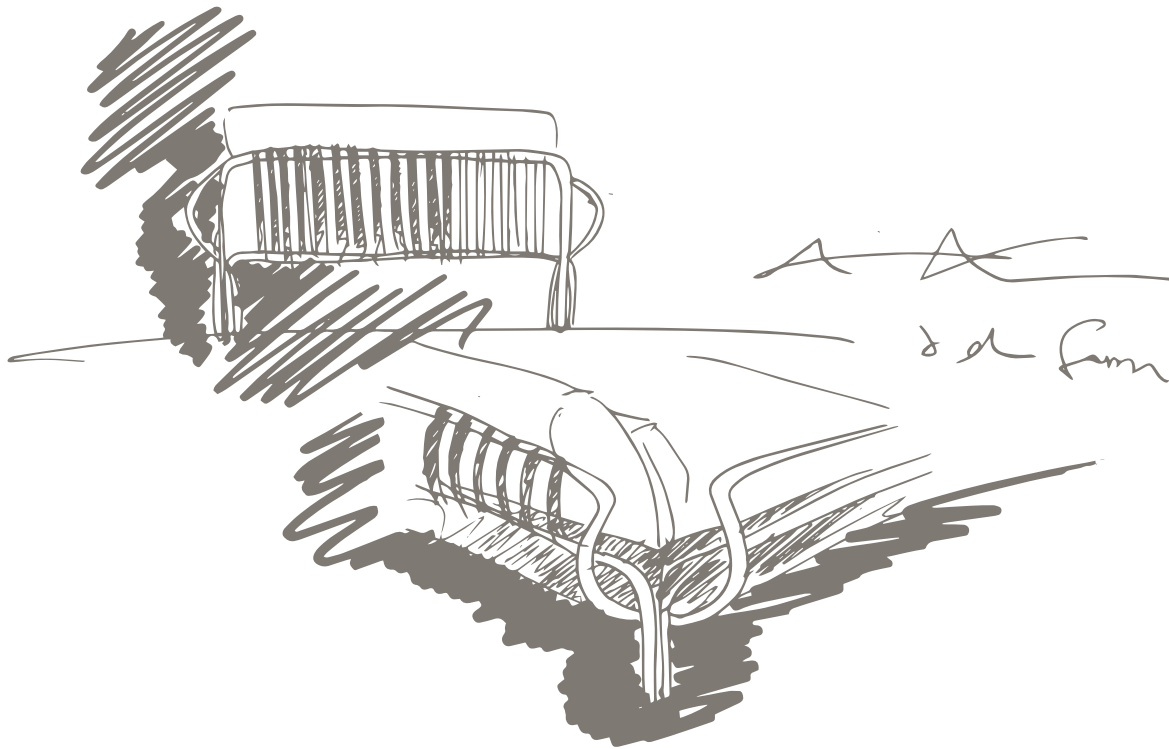












## EHDEN SOFA

---

The Armchair and Sofa boast a design reminiscent of the Garden's organic allure, with a structure in dark bronze and intricate woven dark rope detailing adorning the iconic armrests. Base in painted steel with elastic belts and water-repellent polyester fiber lining.











# EHDEN TABLE

---

For alfresco dining experiences, the Dining Table exudes sophistication with its dark bronze steel structure and sleek thermoformed glass top, available in two versatile dimensions to accommodate gatherings of any size. Collection is completed with series of **EHDEN Coffee tables**.



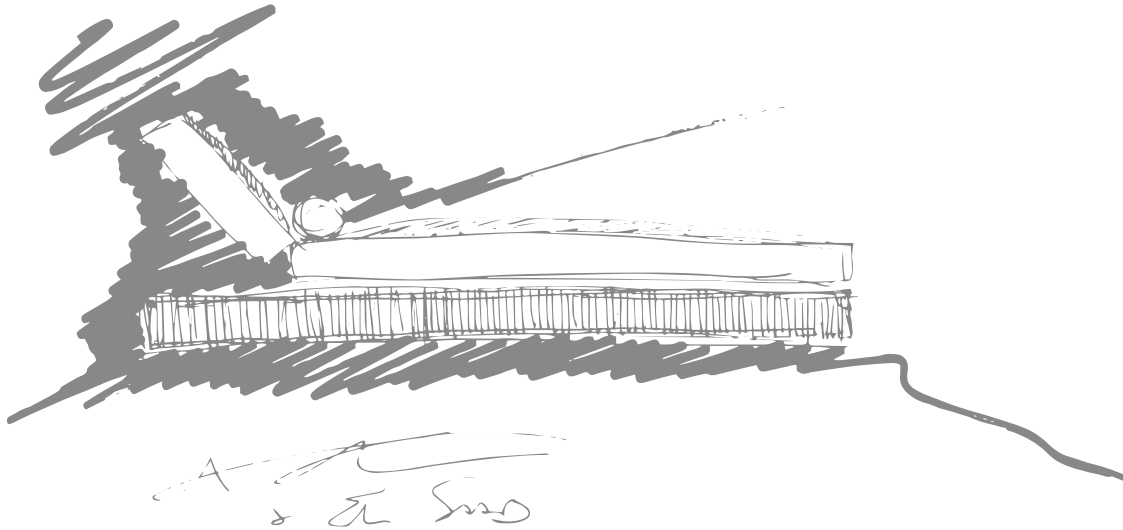












## EHDEN SUNBED

---

Crafted for luxurious relaxation, the sunbed features a dark bronze base covered by woven dark rope moka fabric. Cushioning available in all outdoor fabrics from the collection adorned with an exclusive ELIE SAAB monogram details on right and left side of roll cushion.



## Design by Carlo Colombo

The collection ELIE SAAB Maison is manufactured and distributed by Corporate Brand Maison SA. The Company reserves the right to make any necessary modifications for functional and qualitative improvements to the products without prior notification. Pictures of products and samples have a purely indicative value, and colors may vary due to the printing process. Image reproduction in whole or part is strictly prohibited. Copyright © Corporate Brand Maison SA - All rights reserved.

La collezione ELIE SAAB Maison è prodotta e distribuita da Corporate Brand Maison SA. L'Azienda si riserva di apportare, in qualsiasi momento, senza obbligo di preavviso, qualsiasi tipologia di miglioramento tecnologico, estetico e qualitativo ai propri prodotti. Le immagini di prodotti e campioni hanno un valore puramente indicativo, ed i colori possono variare in relazione al processo di stampa. Copyright © Corporate Brand Maison SA - Tutti i diritti riservati.



## **Corporate Brand Maison SA**

Via San Gottardo 53  
6900 Massagno, Switzerland

Tel +41 919 100888

[info@cbmaison.com](mailto:info@cbmaison.com) / [cbmaison.com](http://cbmaison.com)

## **ELIE SAAB Maison Milan**

Via Sant`Andrea 23  
20121 Milan, Italy

+39 02 434 12741 / +39 342 571 8517

[milan@eliesaabmaison.com](mailto:milan@eliesaabmaison.com)

## **Le Privé**

Via Carlo Maria Martini 1  
20122 Milan, Italy

**ELIESAABMAISON.COM**





