



PORTRAITS DE VOYAGE

NOVELTIES COLLECTION



13



Living



31



Dining



59



Living



76



Dining



Bedroom | 91

Foyer | 108

Office | 129

References | 151

A journey through the sources of inspiration that have accompanied the Brand in defining its personal concept of living: places and eras loved, reminisced, cited, and found in each of the elements that make up its furniture and home décor collection. The essence of ELIE SAAB Maison reveals as never before its cosmopolitan nature, the result of the virtuous union of different cultures, united by the pursuit of perfection, whether stylistic, aesthetic, or material. The dominant motif, dear to Elie Saab, is Art Déco. Simplicity, purity, symmetries, all without sacrificing the richness, the opulence, of new materials and workmanship.

Un viaggio attraverso le fonti di ispirazione che hanno accompagnato il Brand nella definizione del suo personale concetto di living: luoghi ed epoche amati, ricordati, citati, e che si ritrovano in ciascuno degli elementi che compongono la sua collezione di arredamento e home décor. L'essenza di ELIE SAAB Maison mostra come non mai la sua natura cosmopolita, frutto dell'unione virtuosa di culture diverse, unite dalla ricerca della perfezione, stilistica, estetica, materiale. Il tema dominante, caro a Elie Saab da sempre, è l'Art Deco. Semplicità, purezza, simmetrie, senza rinunciare alla ricchezza, all'opulenza, di materiali e lavorazioni nuove.

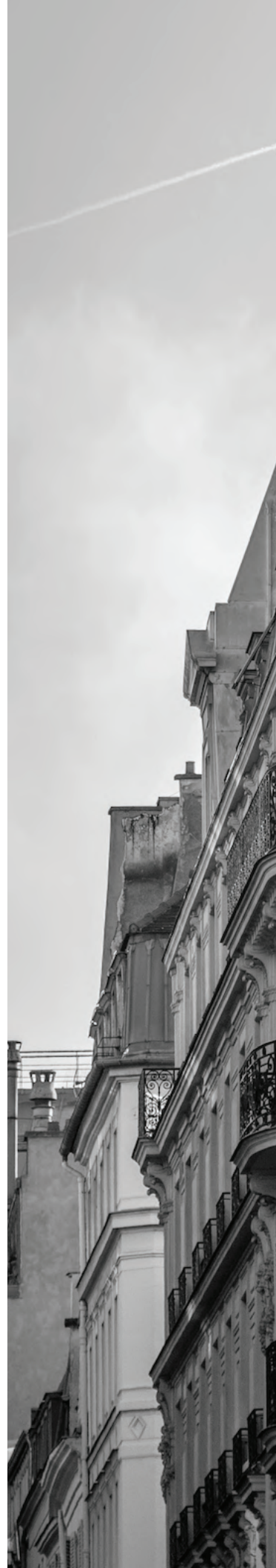




NOVELTIES

COLLECTION













ELIE SAAB

MAISON

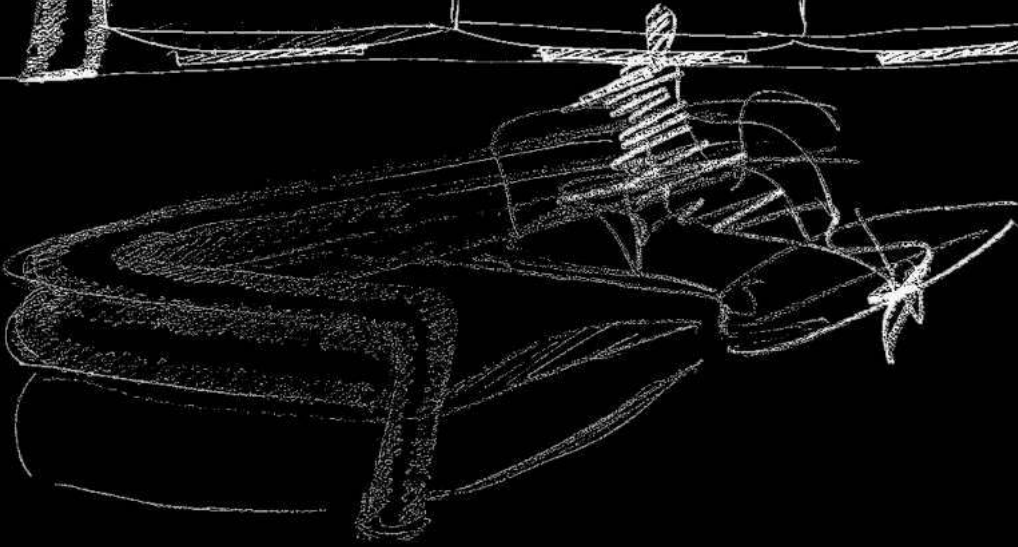
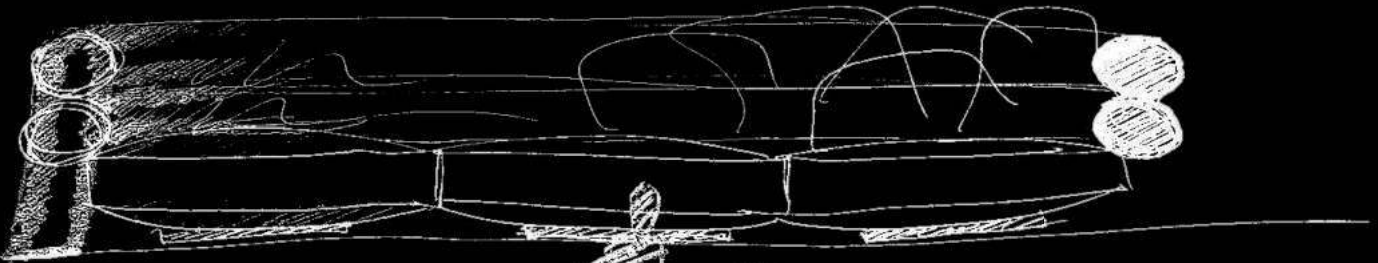


HALO

SOFA







Lee Sang

04. 2021

Shapes,
decorative
elements
and volumes
inspired by
Art Déco: A
tribute to style
moderne.





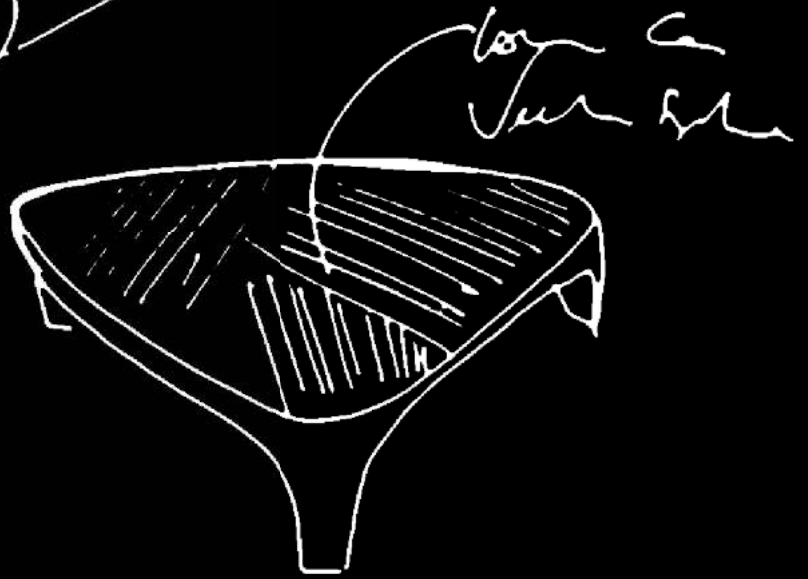
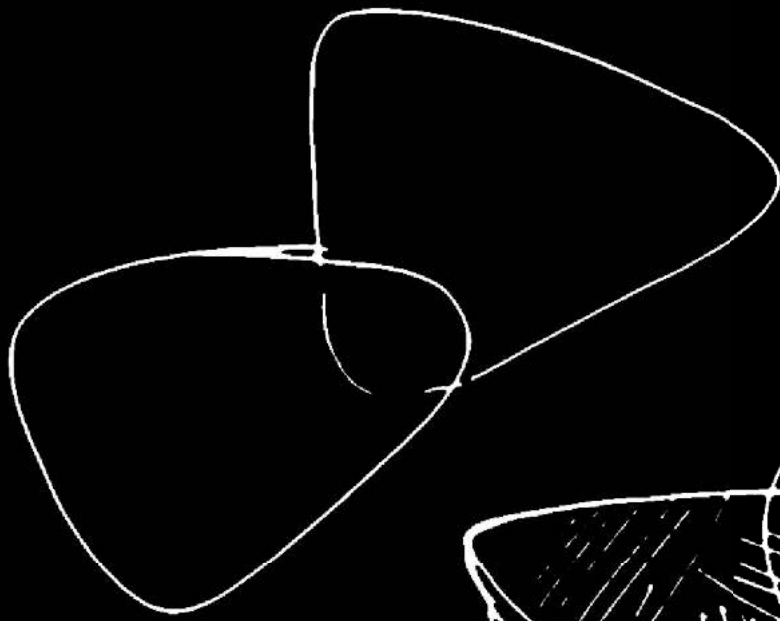
HALO

SOFA

With its sinuous, enveloping forms that surround the seat, defining a space that is both formal and informal. Available as armchair and in the 2- and 3-seater sofa. Base and feet made of bronzed metal. Elegant cushion of 70x55cm with monogram embroidered detail included.

Con le sue forme sinuose, avvolgenti, che circondano la seduta definisce uno spazio allo stesso tempo formale e informale. Disponibile nella versione poltrona, divano a due posti e divano tre posti. Base e piedi in metallo bronzato. Include un cuscino schienale cm 70 x 55 cm.





longer can
shorter can

longer can
shorter can

A gentle
embrace of
harmony,
wamth and
elegance.



EMBRACE

LOW TABLES







EMBRACE

LOW TABLES

Named after its round, embracing shape, this series of wooden tables is available in heat-treated eucalyptus or oak. Manufactured in two different sizes, the embrace tables are available in 65 or 105 cm.

Chiamata così per la sua forma rotonda e avvolgente, questa serie di tavoli in legno è disponibile in eucalipto termotrattato o in rovere. Realizzati in due diverse dimensioni, i tavoli embrace sono disponibili in 65 o 105 cm.







ELIE SAAB

MAISON





ELIE SAAB

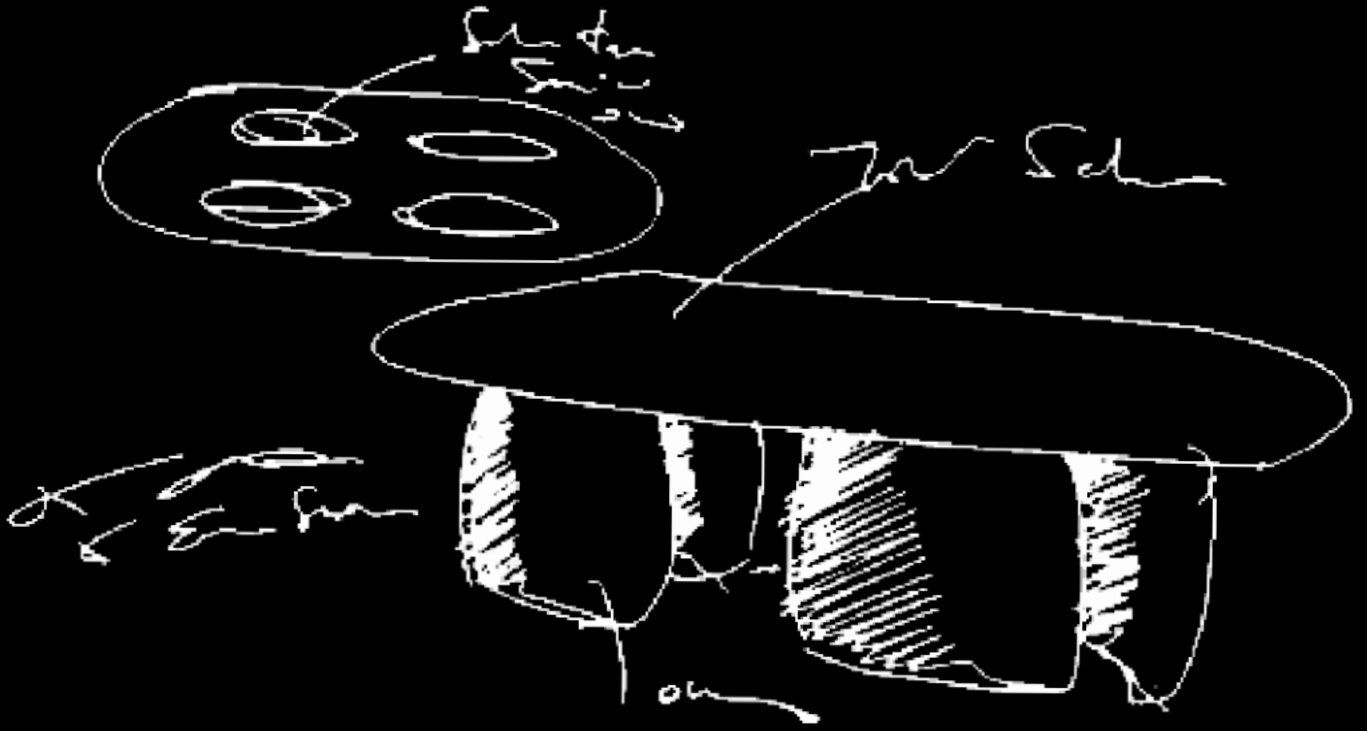
MAISON

OBSIDIAN

TABLE







Imposing,
with sinuous
shapes. Re-
flections that
capture light
and
transform it.





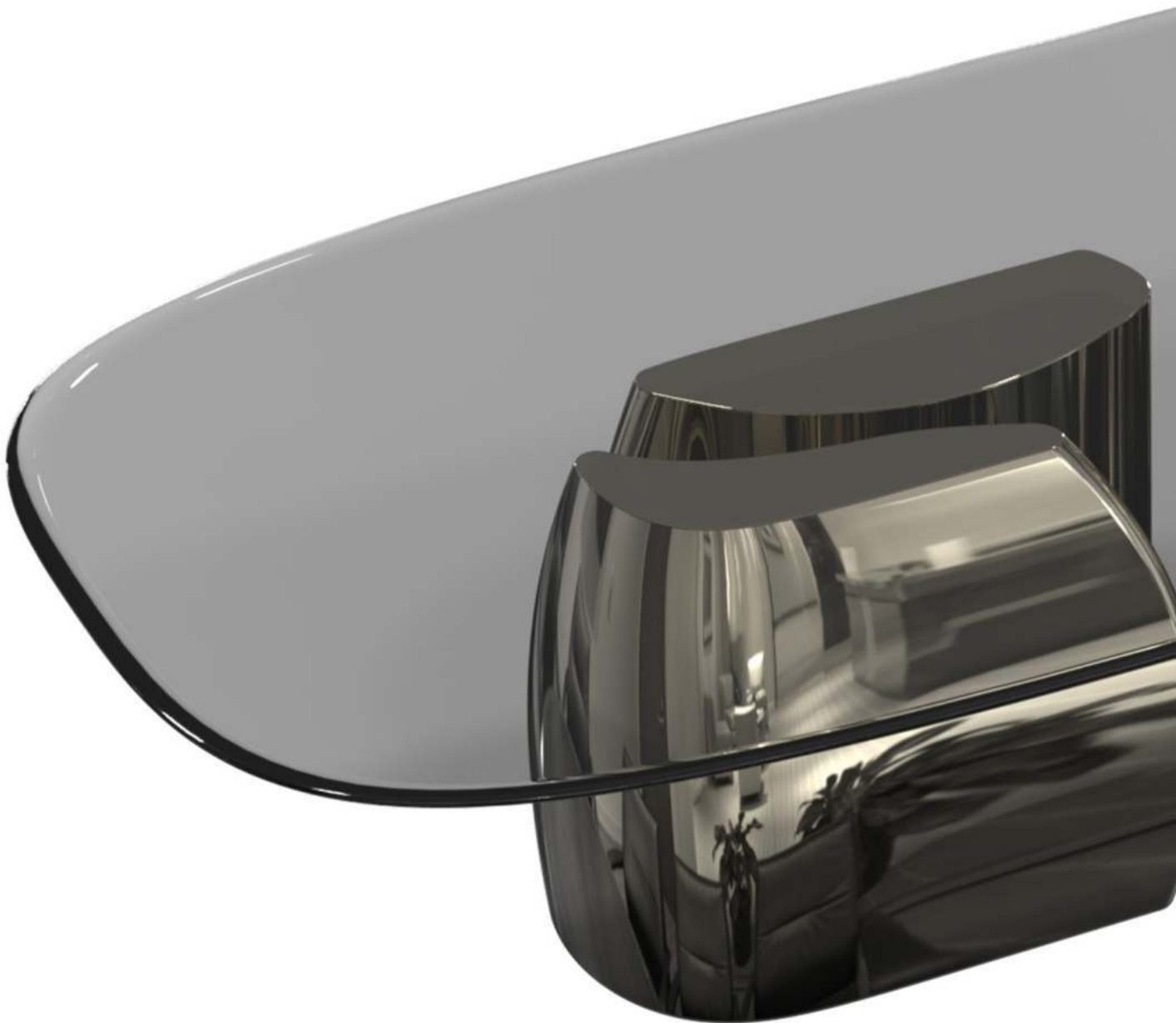
OBSIDIAN

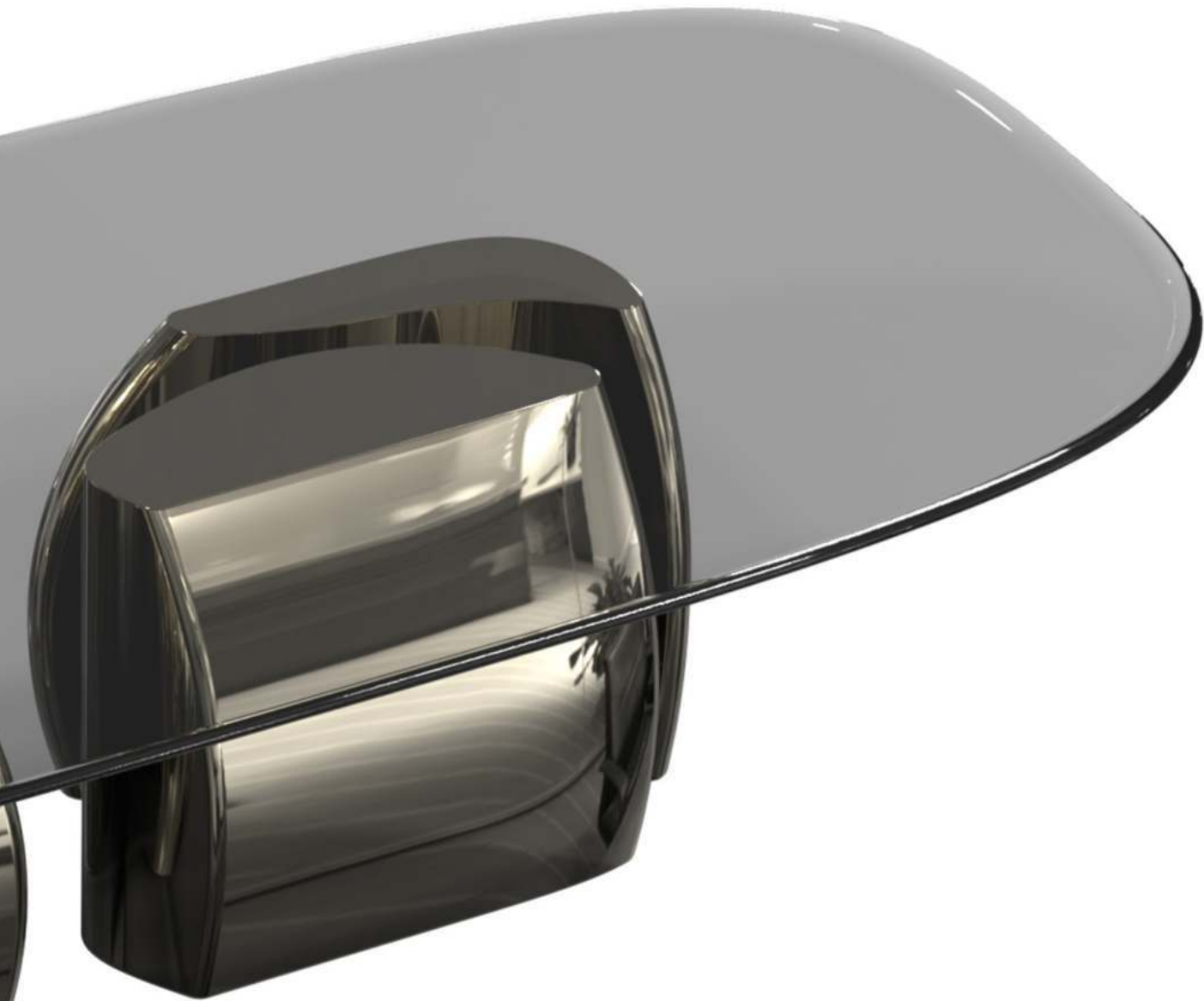
TABLE

The base, a real work of art, imposing, with sinuous shapes, cannot fail to instantly capture the gaze; on them rests a rounded top available in bronzed glass or marble. The finishing of the base is polished gold with an almost mirror-like effect, capable of reflecting light.

La base, vera e propria opera d'arte, imponente, dalle forme sinuose, non può non catturare all'istante lo sguardo di chi la osserva; su di esse poggia un piano arrotondato disponibile in vetro bronzato o marmo. La finitura della base è oro lucido con effetto quasi a specchio, capaci di riflettere la luce.





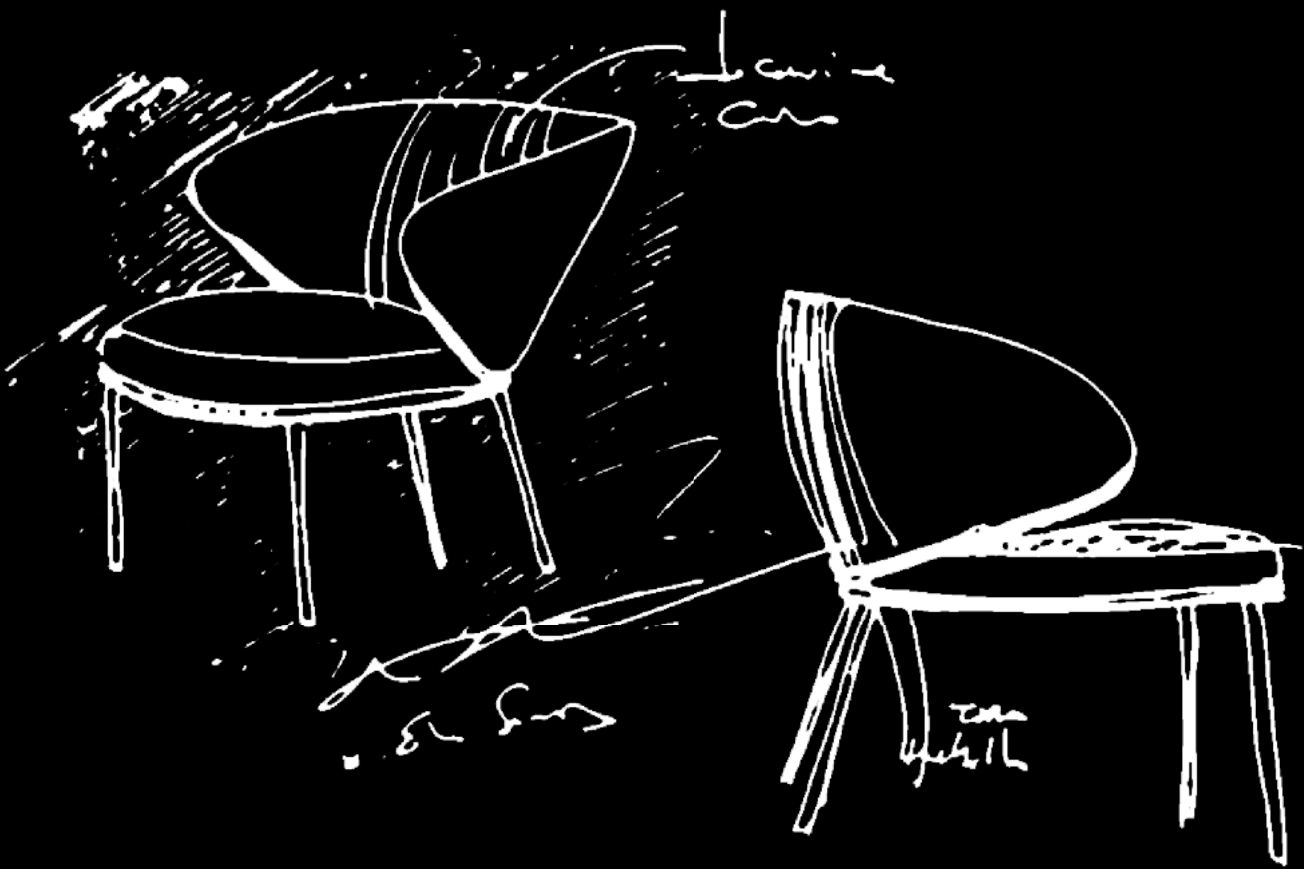


TAMARA

ARMCHAIR & CHAIR







Taking its name from one of Art Déco's most appreciated female artists, Tamara expresses refined manufacturing and sophisticated elegance.



TAMARA

ARMCHAIR

The Tamara armchair is characterised by exquisite sartorial craftsmanship and sinuous shapes. Upholstery in fabric or leather from the collection. Metal finishings in black nickel or polished gold. Seat height of 74cm. Available also with its pouf.

La poltrona Tamara è caratterizzata da una squisita lavorazione sartoriale e da forme sinuose. Rivestimento in tessuto o pelle della collezione. Finiture in nichel nero o oro lucido. Altezza della seduta di 74 cm. Disponibile anche con il pouf.







TAMARA

CHAIR

The Tamara chair is characterised by its sophisticated game of leather and fabrics, which can be combined in an infinite variety of designs. Metal finishings in black nickel or polished gold. Seat height of 79cm.

La sedia Tamara è caratterizzata da un sofisticato gioco di pelli e tessuti, che possono essere combinati in un'infinita varietà di design. Finiture in metallo in nichel nero o oro lucido. Altezza della seduta di 79 cm.





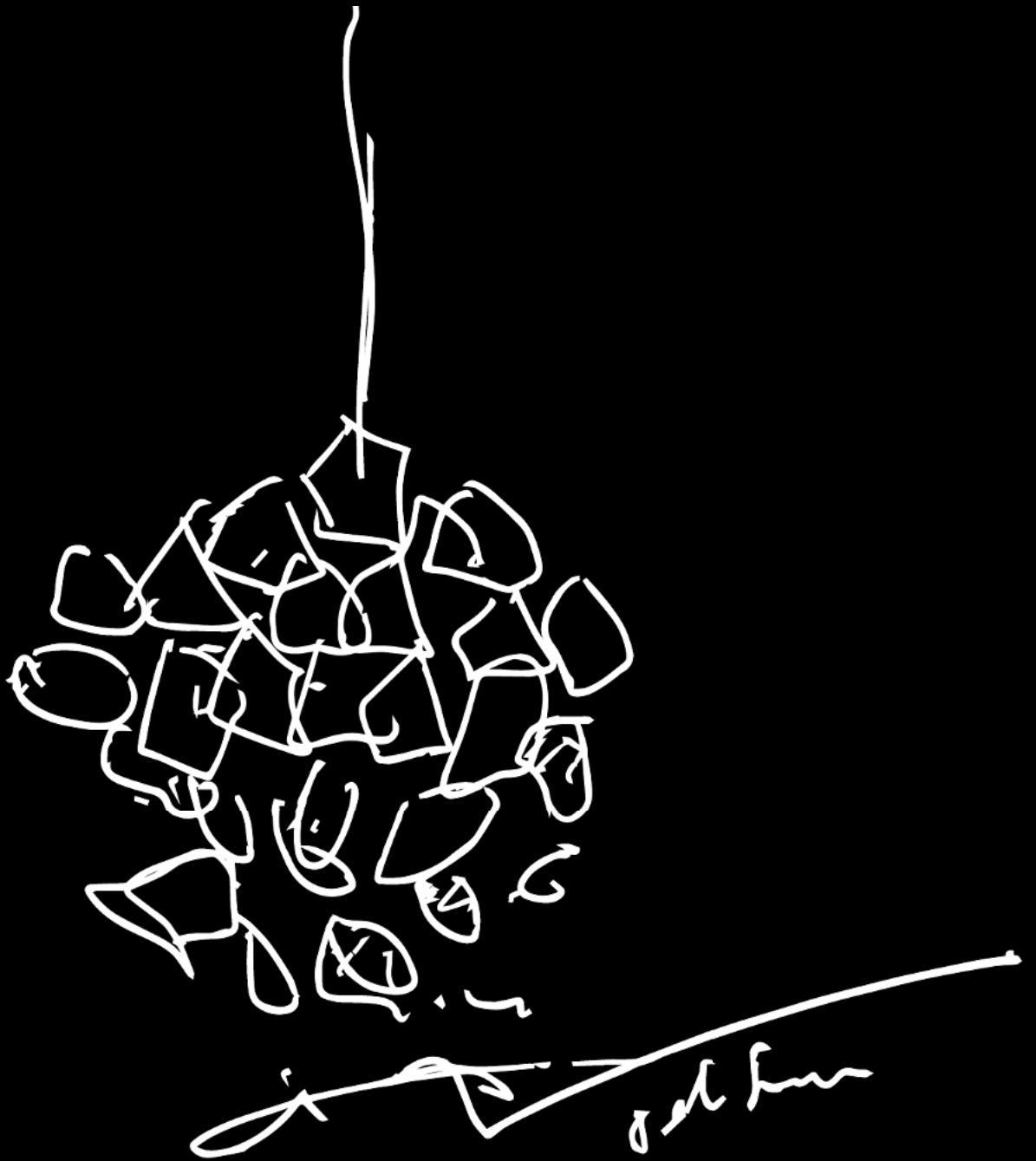


DIAMOND

BESPOKE







Diamond
like shapes
add a
refined
contempo-
rary glamour
to any indoor
setting.





DIAMOND

BESPOKE

The chandelier carries proudly its name, creating a unique light spectacle through its diamond like shapes. The chandelier, an icon of the collection, is transformed into a new Bespoke proposal with a variety of combinations to suit any living environment. Light metal structure and applications in Murano glass known for its exceptional artisanal workmanship.

Il lampadario porta il suo nome con orgoglio, creando uno spettacolo di luci unico attraverso le sue linee a forma di diamante. Il lampadario, icona della collezione, si trasforma in una nuova proposta Bespoke con mutevoli possibilità di combinazione per adattarsi alle più svariate esigenze progettuali. Struttura in metallo leggero e applicazione in vetro di Murano, noto per la sua eccezionale lavorazione artigianale.







ELIE SAAB

MAISON



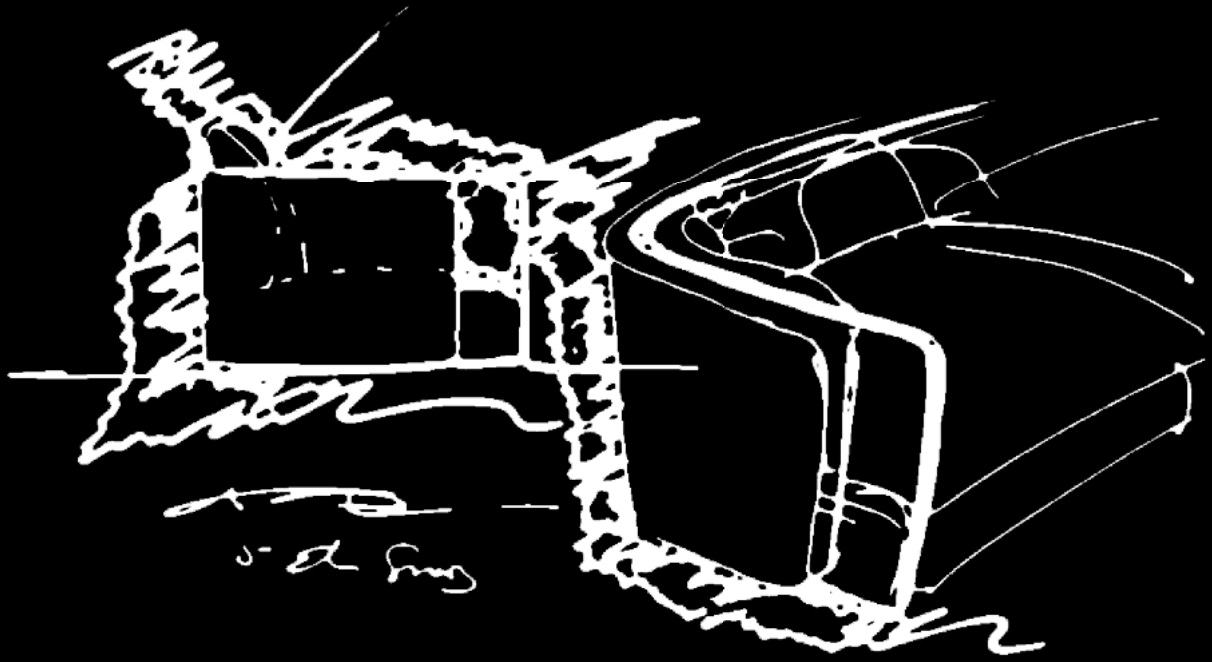


IMPERIAL

SOFA







A contemporary,
minimalist and
timeless con-
struction which
can easily be
transformed
and moved
around any liv-
ing space.





IMPERIAL

SOFA

A modular sofa covered in fabric or leather from the collection. The 95cm and 120cm modules offer, together with the corner element and chaise longues, a variety of solutions. A metal frame surrounds the sofa available in bronzed metal or polished steel. Every element is completed with a monogram embroidered pillow.

Divano componibile rivestito in tessuto o pelle della collezione. I moduli da 95cm e 120cm offrono, insieme all'elemento angolare e alle chaise longue, molteplici soluzioni. Una struttura in metallo circonda il divano disponibile in metallo bronzato o acciaio lucido. Ogni elemento è completato da un cuscino ricamato con monogramma.

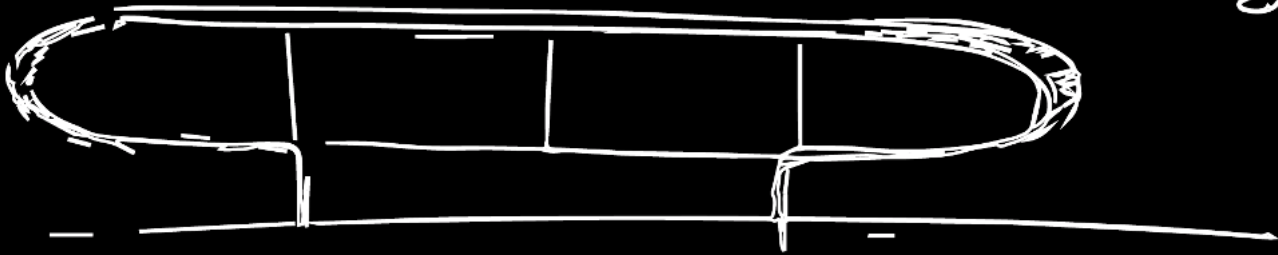


NAPIER

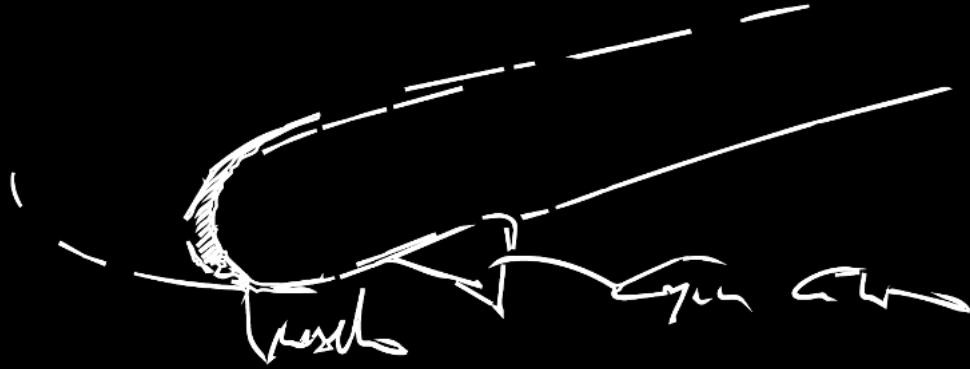
SIDEBOARD







et long

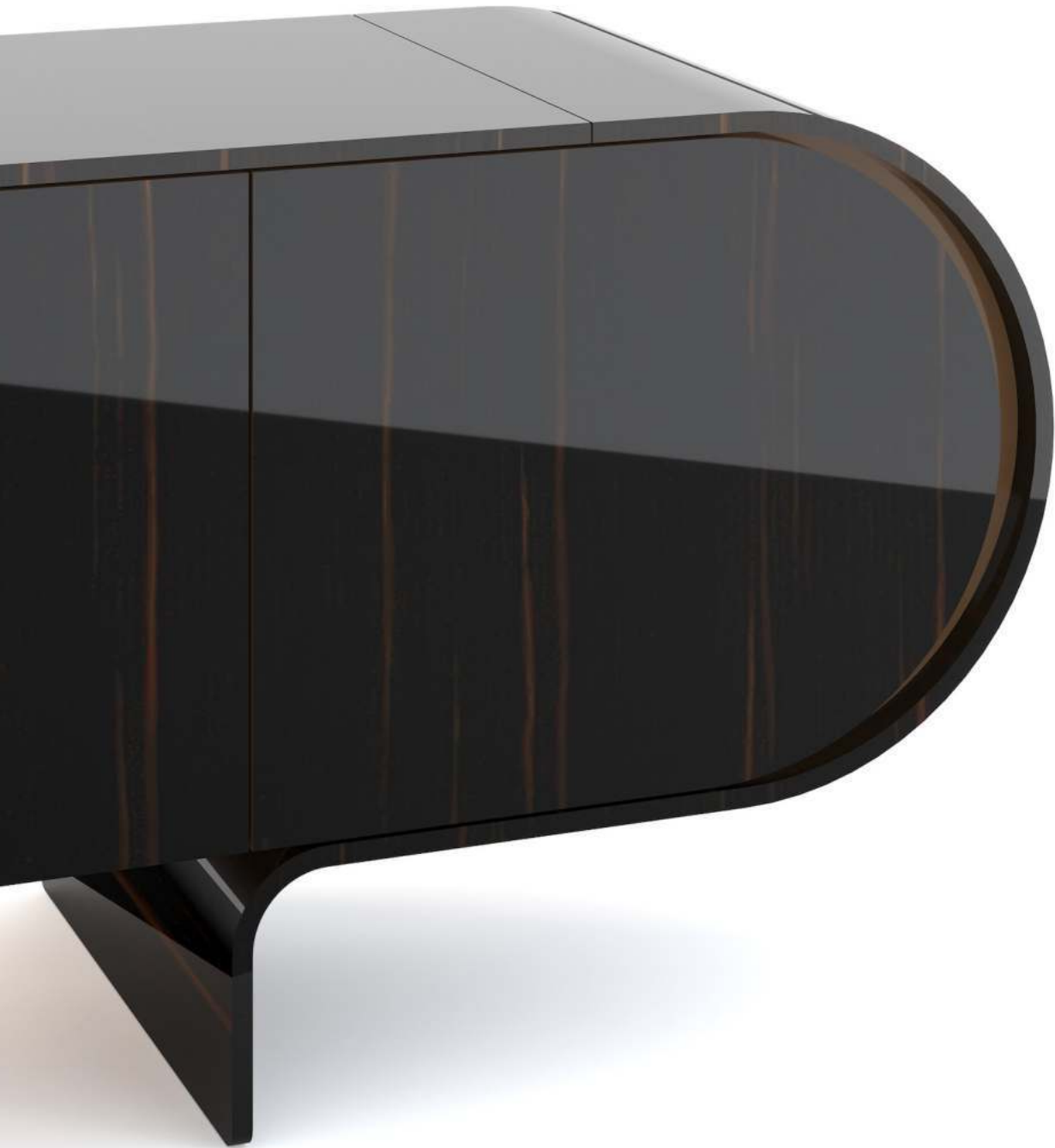


tranche

guyon

Napier where
simplicity and
opulence
meet in true
Art Déco Style.





NAPIER

SIDEBOARD

A refined sideboard, entirely made of polished ebony wood. Handmade internal structure in lacquered wood. Design available also with two drawers.

Un raffinato mobile, interamente realizzato in legno di ebano lucido. Struttura interna realizzata a mano in legno laccato. Modello disponibile anche con due cassetti.







ELIE SAAB

MAISON



ELIE SAAB

MAISON

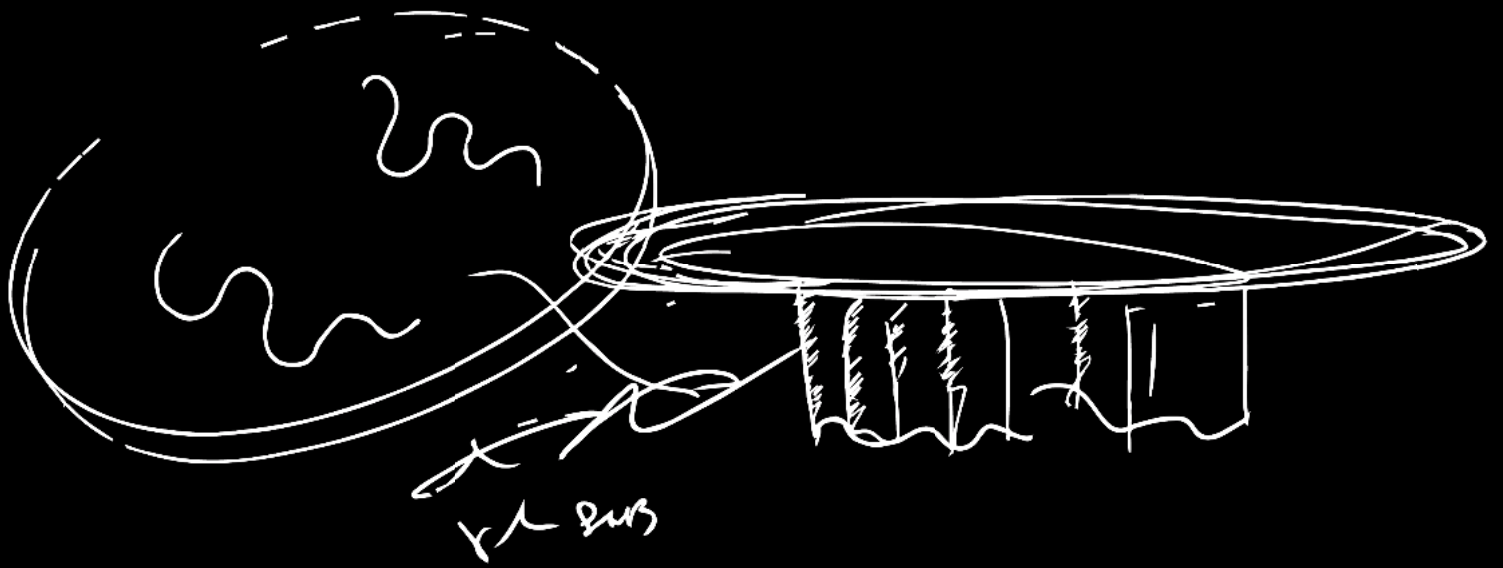


DUNES

TABLE







Inspired by the
harmonious
forms of the
dunes of the
Arabian desert,
the base is a
true work of art.





DUNES

TABLE

The latest proposition of the Dunes Collection, series of tables, low tables and consoles, the table is characterised by metal lacquered base, available in a variety of colours. Top available in all stones and marbles of the collection or in transparent or smoked glass. Available in dimensions of 240, 300, 400, 600 and 800cm or, on request, custom made after technical evaluation.

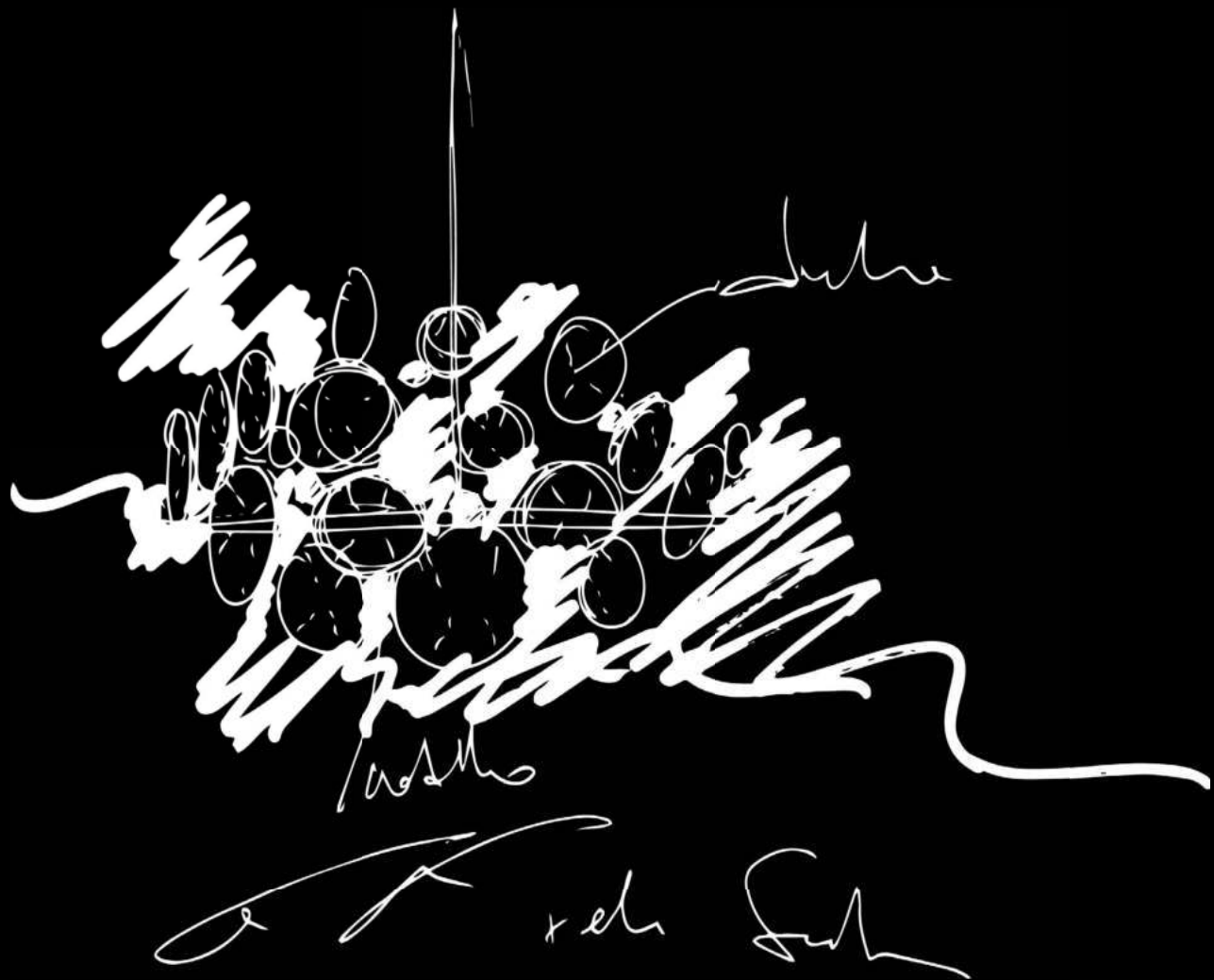
Ultima proposta della collezione Dunes, serie di tavoli, tavolini e consolle, il tavolo è caratterizzato da una base in metallo laccato, disponibile in diversi colori. Il piano è disponibile in tutte le pietre e marmi della collezione o in vetro trasparente o fumé. Disponibile nelle dimensioni di 240, 300, 400, 600 e 800 cm o, su richiesta, su misura previa valutazione tecnica.



SAPPHIRE

CHANDELIER





A candelabra-jewel that floats in space with its regal gems, creating a unique light spectacle of mystique and grace.





SAPPHIRE

CHANDELIER

Sapphire is presented as a chandelier in a variety of dimensions, applique, floor and table lamp offering contemporary glamour to any indoor setting. Structure available in bronzed metal, sparkling bronze or polished gold. Crystals in bronzed glass. On request available with alabaster additions.

Sapphire si presenta come lampadario in una varietà di dimensioni, applique, lampada da terra e da tavolo che dona glamour contemporaneo a qualsiasi ambiente indoor. Struttura disponibile in metallo bronzato, oro lucido o bronzo brillante. Cristalli in vetro bronzato. Su richiesta disponibile con dettagli in alabastro.





+ ECOLE PRIMAIRE COMMUNALE



ELIE SAAB

MAISON



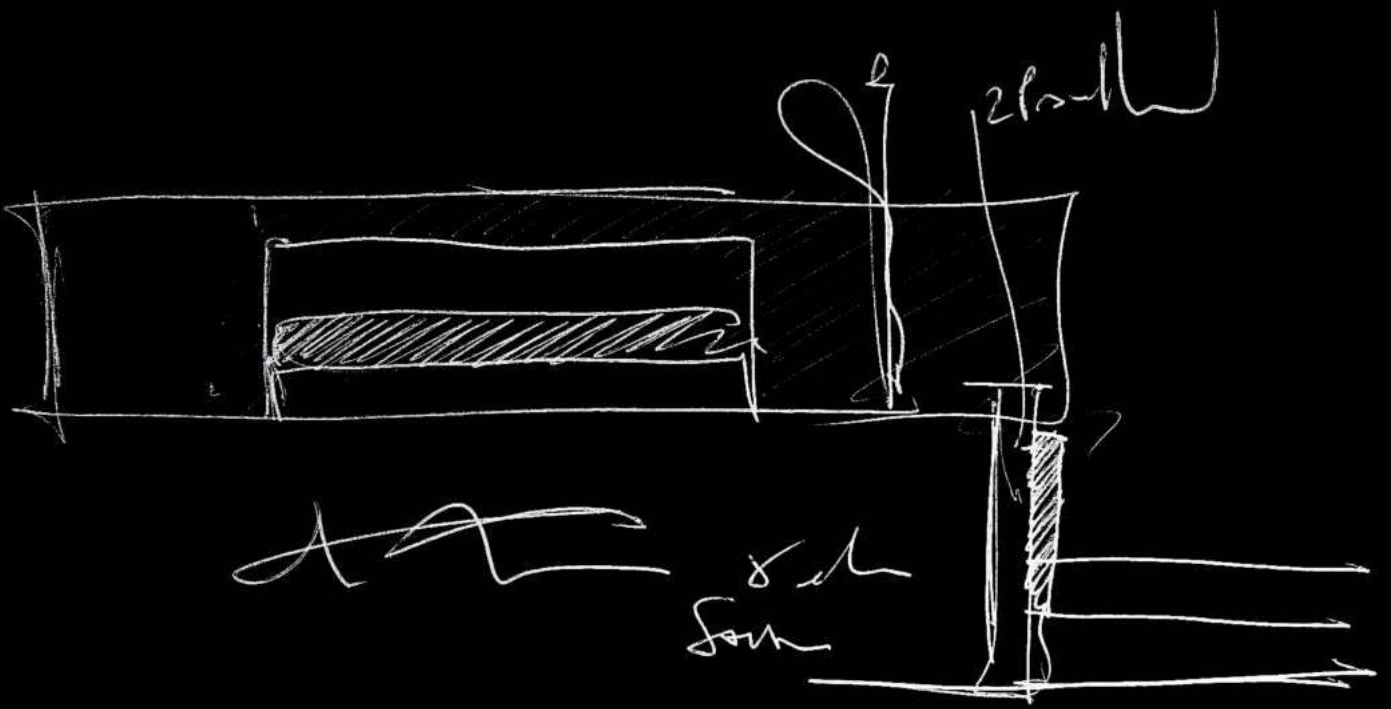


VOYAGE ROYAL

BED







With captivating
design and
geometric
charm,
the royal head-
board expresses
its refined
manufacturing.





VOYAGE ROYAL

BED

Structure in plywood and polyurethane foam. Upholstery in fabric or leather from the collection, characterized by the double headboard. Available for 180cm and 200cm mattresses. Bed frame equipped with height adjustable supports. Also available in the two-tone version with the external headboard covered in leather and the internal headboard in fabric or leather from the collection. Internal headboard with leather piping.

Struttura in legno multistrato e poliuretano espanso. Rivestimento in tessuto o pelle della collezione, caratterizzato dalla doppia testiera. Disponibile per materassi da 180cm e 200cm. La struttura del letto è equipaggiata con supporti regolabili in altezza. Disponibile anche nella versione bicolore, con la testiera esterna rivestita in pelle e la testiera interna in tessuto o pelle della collezione. Testiera interna con profilo realizzato in pelle.

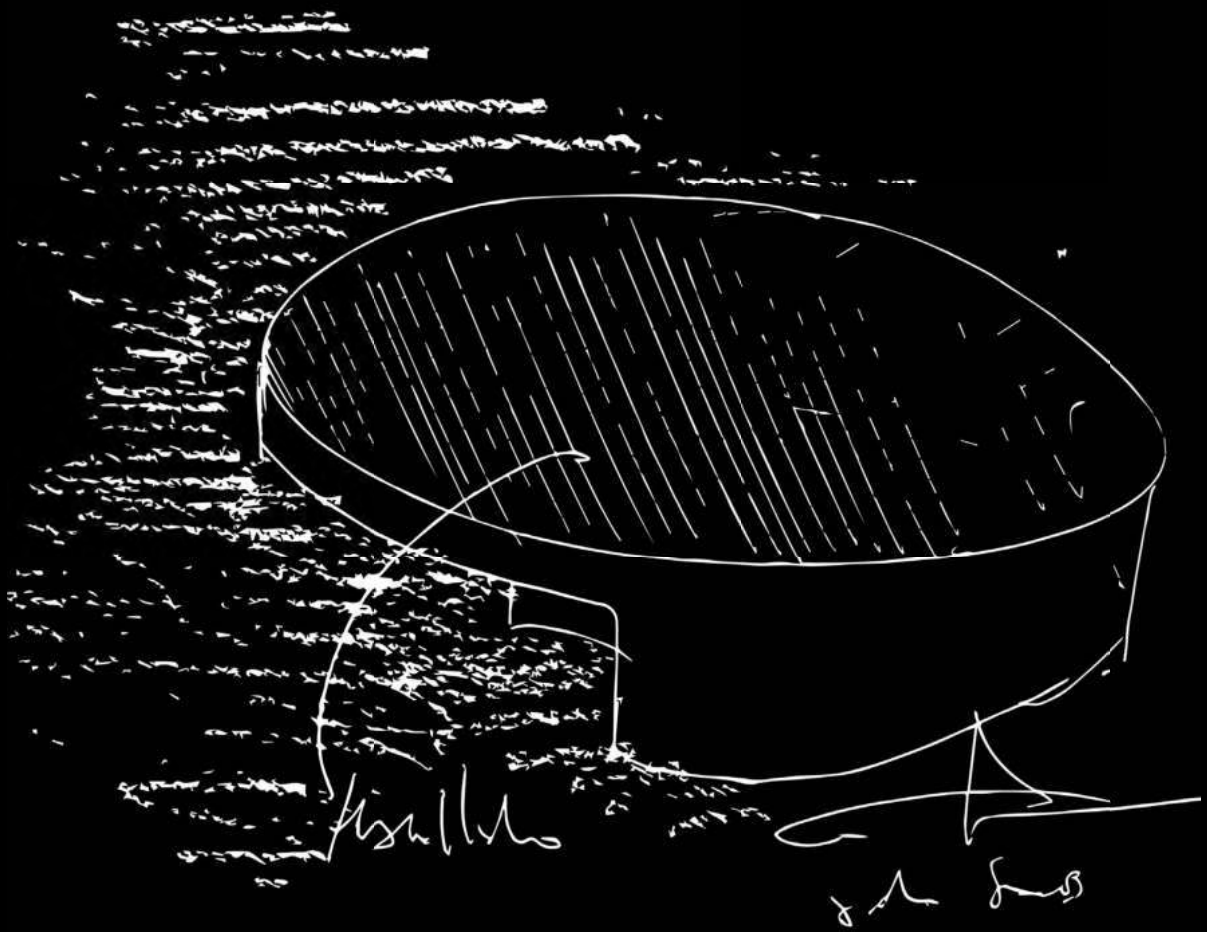


PALACE

NIGHTSTAND







Kupfer

Zinn

An expression
of extraordinary
richness,
in which both
the attention
to detail and
the elements
deriving from
the finest
craftsmanship
stand out.





PALACE

NIGHTSTAND

Expanding the series of the Palace low tables, the nightstand's structure is made entirely in metal, available in brass with bronzed, brushed or hammered finishing or in polished steel. Drawer available in all leathers of the collection. Base available in all marbles and stones of the collection. Upon request the top can be protected by transparent glass or all leathers from the collection.

Ampliando la serie dei tavolini Palace, la struttura del comodino è interamente in metallo, disponibile in ottone con finitura bronzata, spazzolata o martellata o in acciaio lucido. Cassetto disponibile in tutte le pelli della collezione. Base disponibile in tutti i marmi e pietre della collezione. Su richiesta, il piano può essere protetto da vetro trasparente o da tutte le pelli della collezione.







ELIE SAAB

MAISON



ELIE SAAB

MAISON

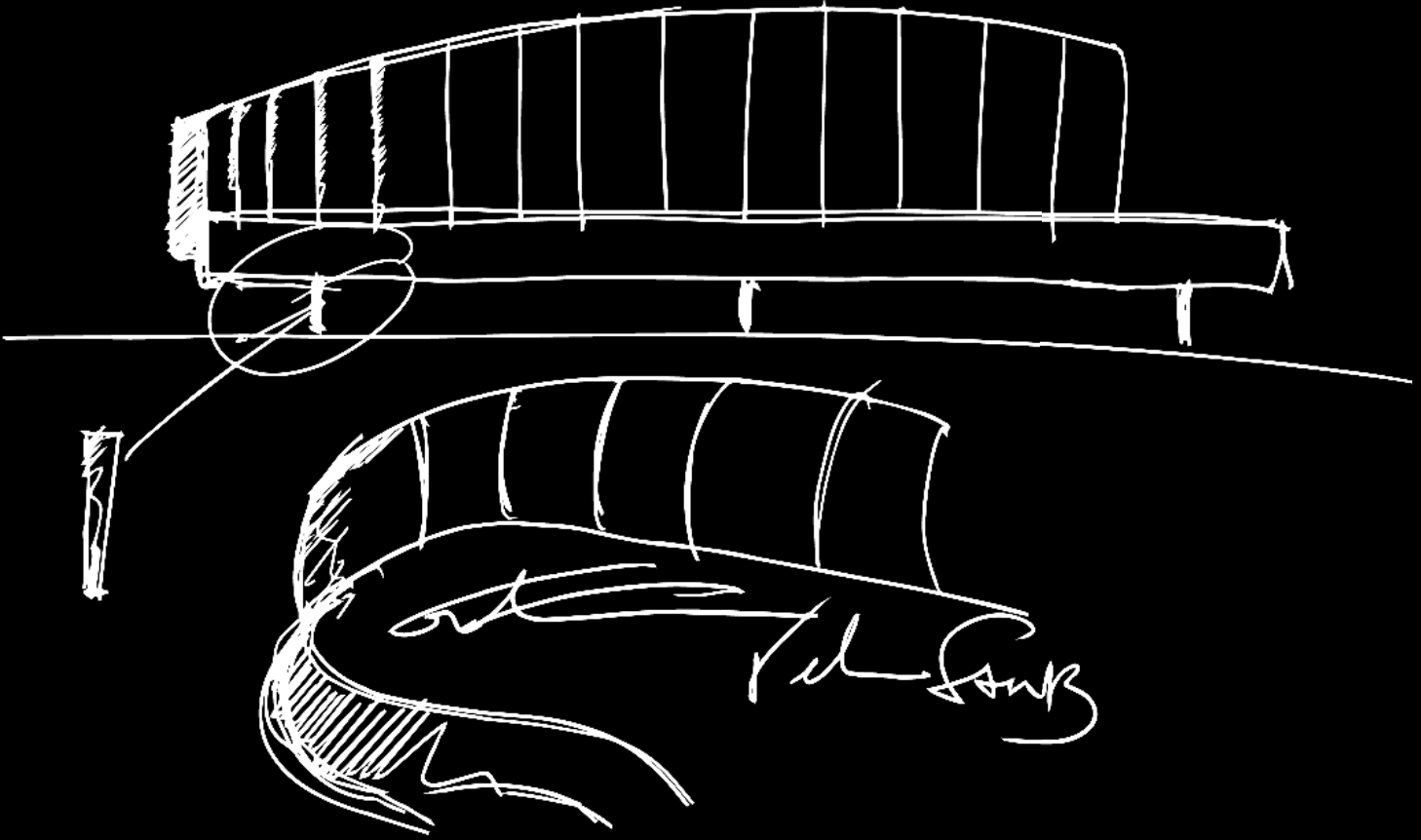


MONOLITH

SOFA







With the
impressive
beauty and
its refined
manufac-
turing, the
Monolith sofa
adds a touch
of Art Déco
to every living
environment.





MONOLITH

SOFA

Sofa, available in 3 or 4-seater version in fabric or leather from the collection. Backrest composed of individual upholstered elements placed side by side to create an unusual wave. Feet in polished and bronzed brass.

Divano disponibile nelle versioni a 3 o 4 posti, rivestito in tessuto o pelle della collezione. Schienale composto da elementi imbottiti singoli, affiancati per creare un'onda insolita. Piedini in ottone lucido e bronzato.

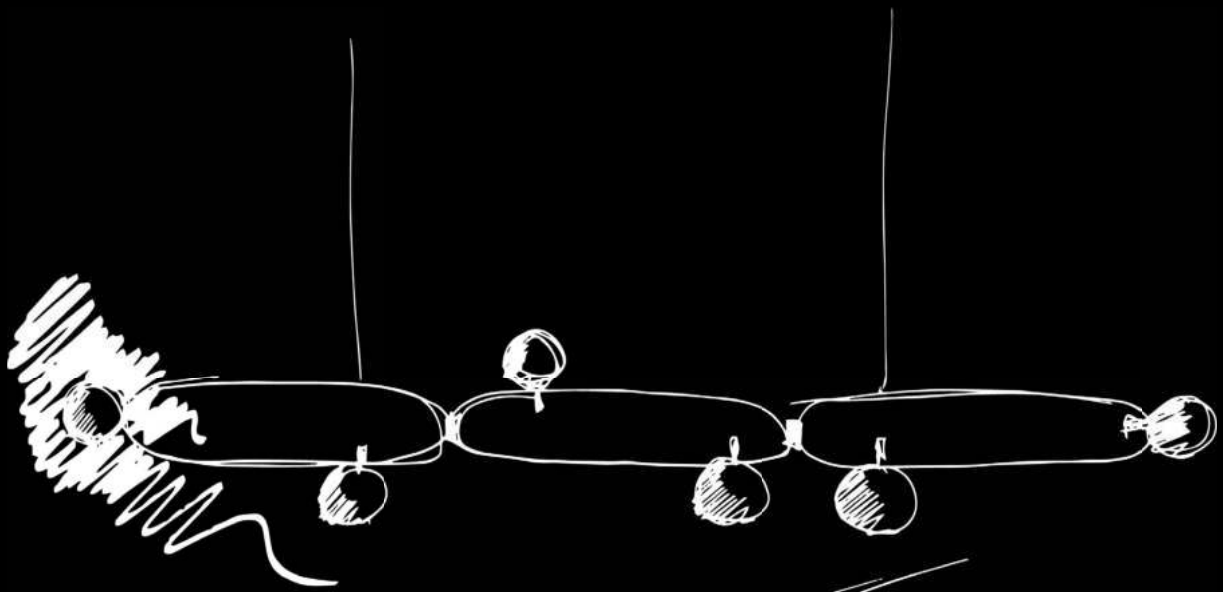


PEARL

LIGHTING COLLECTION







Composed of repeated geometric elements, Pearl appears lightweight like an ancient jewel, irradiating the room beneath with light.



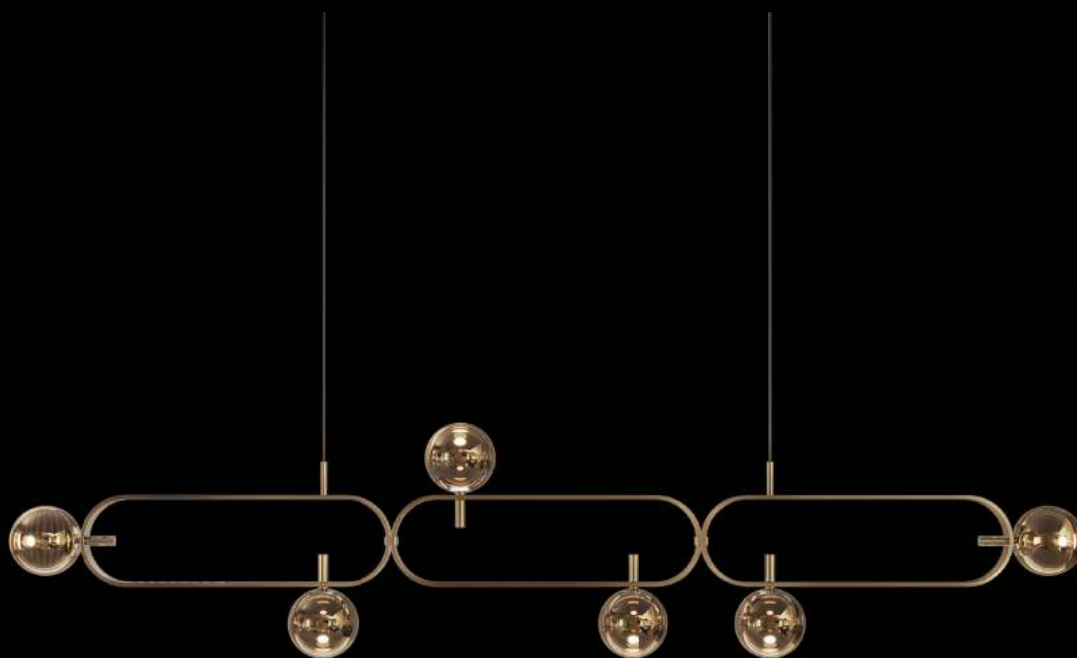


PEARL

LIGHTING COLLECTION

A delicate metal structure and pearl shaped Murano hand-made glass elements make for this magnificent lighting collection. Pearl is presented as a chandelier in a variety of dimensions, floor and table lamp.

Delicata struttura in metallo e elementi in vetro di Murano fatti a mano a forma di perla compongono questa magnifica collezione di lampade. Pearl si presenta come lampadario in varie dimensioni, lampada da terra e da tavolo.

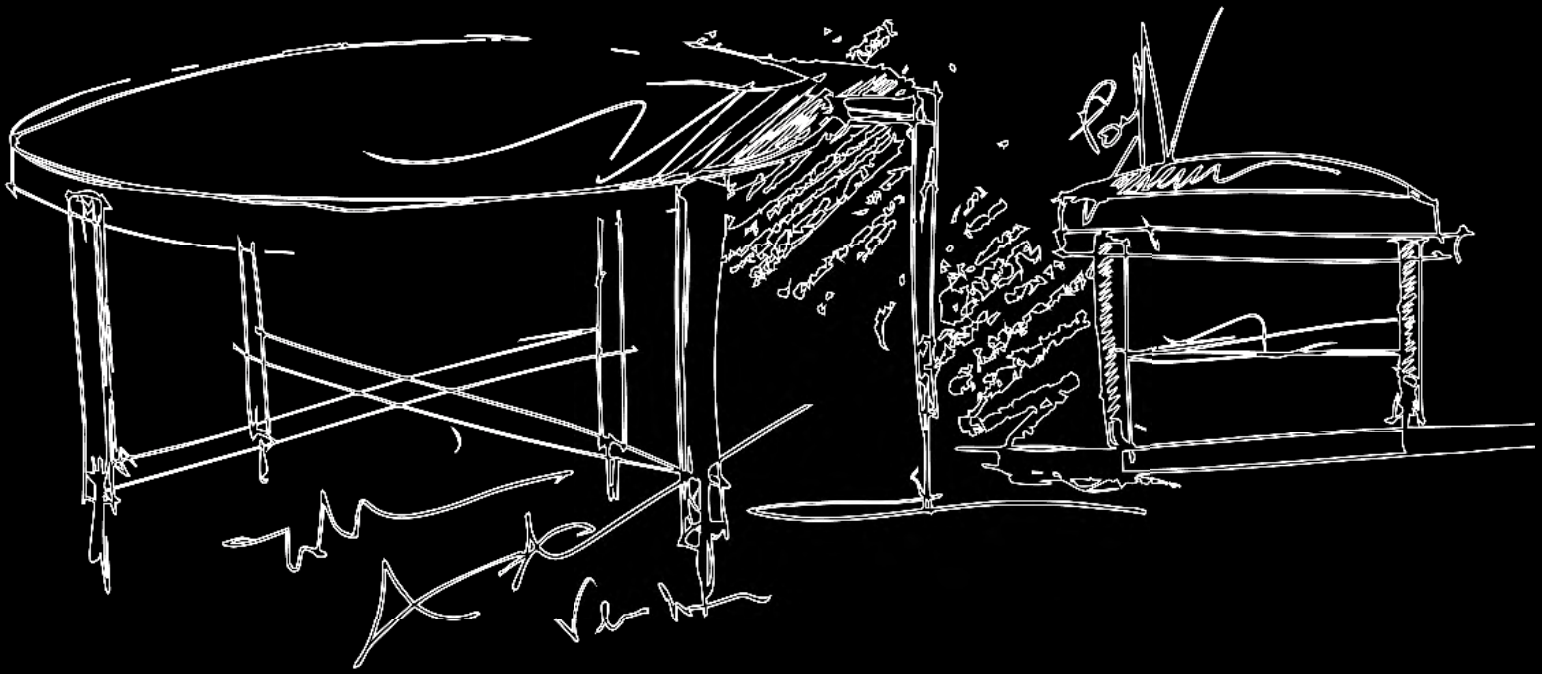


ZENITH

LOW TABLES







Named after its strategic position in interiors, the Zenith collection adds refined and contemporary glamour to each room through its timeless yet unconventional shapes.





ZENITH

LOW TABLES

The latest proposition of the Zenith series of low tables, consoles and poufs, is characterised by its irregular shape. Base in brass with polished or bronzed finishing, or in black nickel. Top in all stones and marbles from the collection.

L'ultima proposta della serie Zenith di tavolini, consolle e pouf, è caratterizzata da una forma irregolare. Base in ottone con finitura lucida o bronzata, oppure in nichel nero. Piano in tutte le pietre e i marmi della collezione.







ELIE SAAB

MAISON





HORIZON

BOOKCASE







Chair
K...
K...

Ad...
Ad...

VK...
g...

Inspired by
the shape
and mys-
tique of the
horizon, the
bookcase
combines
sophistica-
tion and de-
sign in one.



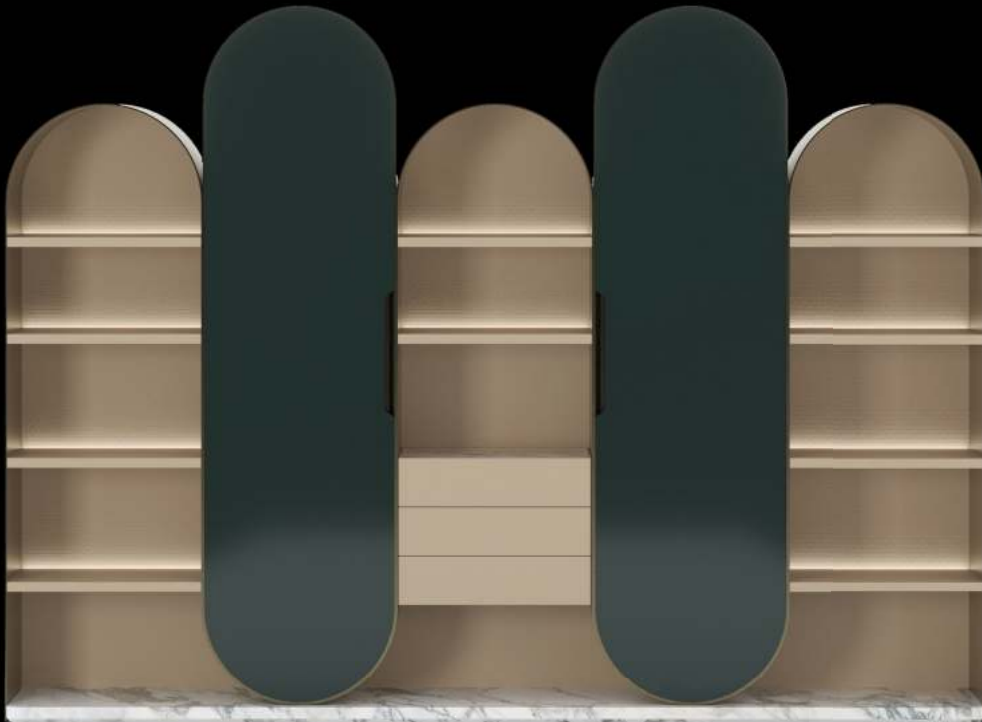


HORIZON

BOOKCASE

Horizon is the "Piece de Resistance" of the collection and the environment in which it is located. A sculptural, modular element that can characterize, as a protagonist, any living space. With Art Déco as its source of inspiration, Horizon offers the excellence of sartorial craftsmanship in both curved metalwork, carpentry and leatherwork. The structure is available in polished steel or bronzed metal. The doors are offered in glossy lacquer or leather from the collection.

Horizon é il "Piece de Resistance" della collezione e dell'ambiente in cui si trova. Un elemento scultoreo, modulabile, in grado di caratterizzare, da protagonista, gli spazi abitativi più svariati. Con l'Art Déco come fonte d'ispirazione, Horizon propone l'eccellenza dell'artigianalità sartoriale sia nella lavorazione del metallo curvato, sia nella falegnameria che nella pelletteria. La struttura è disponibile in acciaio lucido o metallo bronzato. Le ante sono proposte in laccato lucido o in pelle della collezione.



LEGACY

SOFA





ELIE SAAB

TERIBLES

DESIGN CO.

Dati in Contemproso Residua di Architetura

VIRIDIS FOLIO

EXTRAORDINARIO

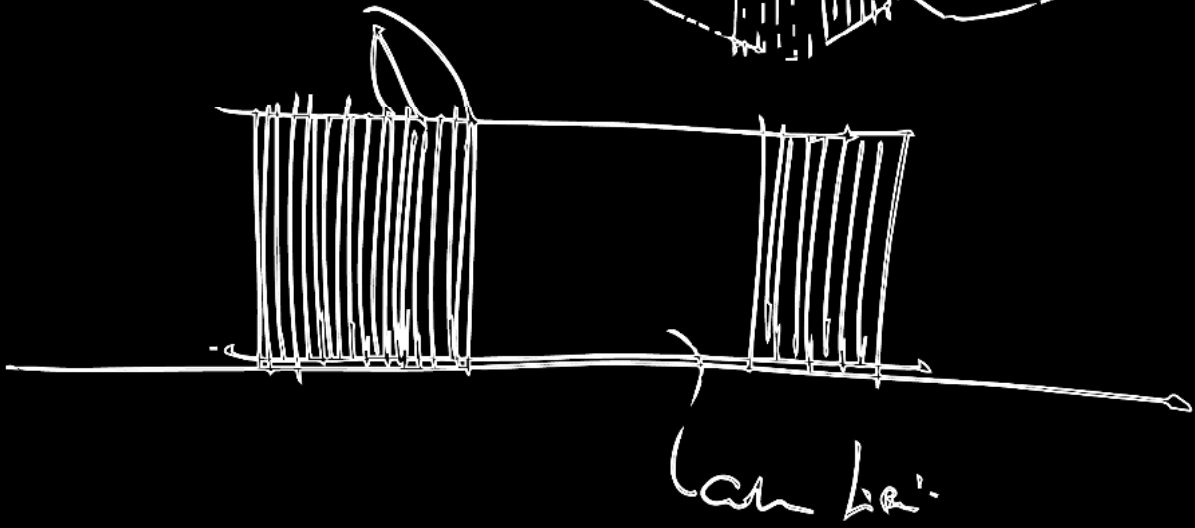
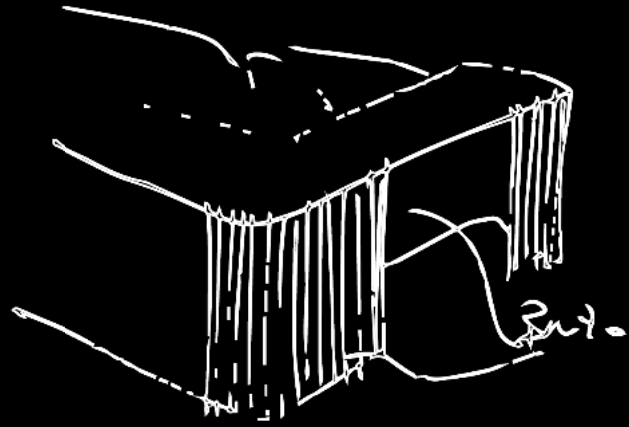
ANTICHIARI

LAZZARINI

LAZZARINI

LAZZARINI

LAZZARINI



sch Eng

A
contemporary
and
revolutionary
construction
emphasized
by the
innovative
design
of the
armrest.





LEGACY

SOFA

A modular sofa covered in fabric or leather from the collection. The 90cm and 105cm seat offers a variety of solutions combining double and triple elements, in addition to the corner elements. The armrests are characterized by a unique detail made of black nickel or brass in brushed or bronzed finishing. Armrest and profile below the cushions in leather from the collection.

Divano modulare rivestito con tessuto o pelle della collezione. La seduta da 90cm e 105cm offre diverse soluzioni, combinando elementi doppi e tripli, oltre a quelli angolari. I braccioli sono caratterizzati da un dettaglio unico realizzato in nichel nero o ottone con finitura spazzolata o bronzato. Bracciolo e profilo sottostante i cuscini sono rivestiti in pelle della collezione.

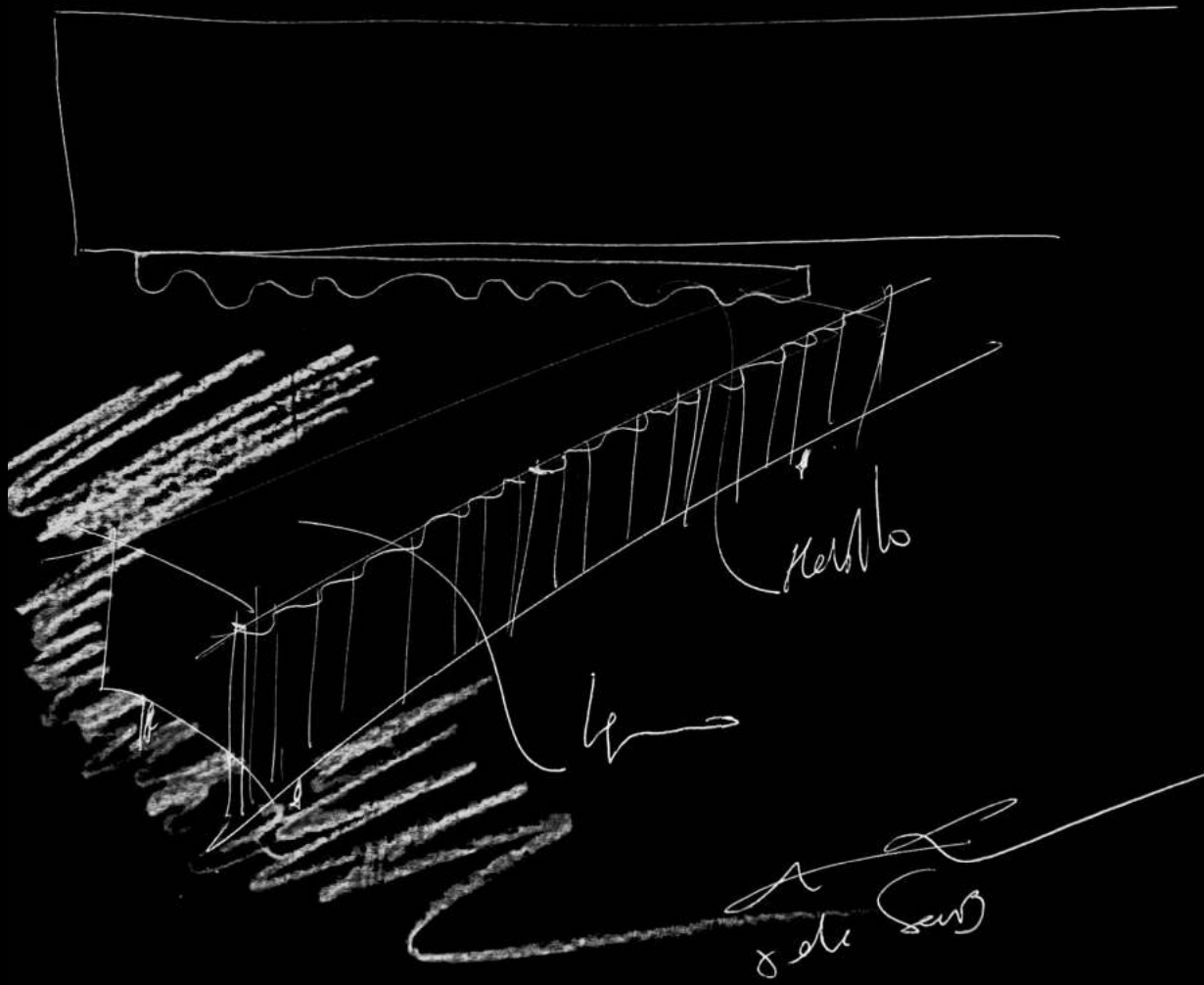


DRIFT

NIGHTSTAND







When
architecture
meets soft
curves, some-
thing sculptural
and sensual is
revealed.





DRIFT

NIGHTSTAND

Recalling the dynamism of dunes shaped by the wind, the nightstand is the latest proposition of the Drift series of cabinets. Structure in dyed eucalyptus wood with undulating doors in gold liquid metal or in all leathers of the collection. Feet in bronzed metal.

Richiamando il dinamismo delle dune modellate dal vento, il comodino è l'ultima proposta della serie di armadi Drift. Struttura in legno di eucalipto tinto con ante ondulate in metallo liquido dorato o in tutte pelli della collezione. Piedini in metallo bronzato.







HALO SOFA

Art. 20420 126 x 110 x H73
Art. 20421 216 x 110 x H73
Art. 20422 306 x 110 x H73



EMBRACE LOW TABLES

Art. 30630 65 x 60 x H43
Art. 30631 105 x 93 x H28



OBSIDIAN TABLE

Art. 30210 250 x 120 x H73
Art. 30211 300 x 135 x H73



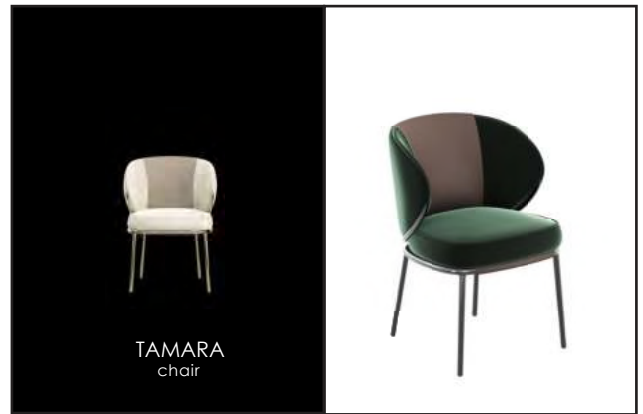
TAMARA ARMCHAIR

Art. 10151 77 x 86 x H74
Art. 10151BN 77 x 86 x H74



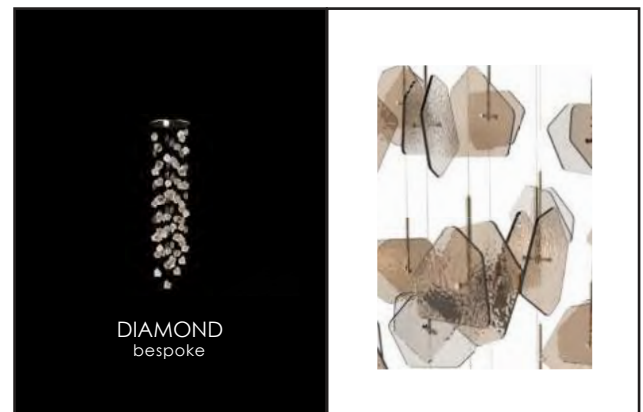
TAMARA CHAIR

Art. 10150 58 x 60 x H79
Art. 10150BN 58 x 60 x H79



DIAMOND BESPOKE

Art. 60105 custom size



IMPERIAL SOFA

Art. 20600 95 x 95 x H69
Art. 20610 120 x 120 x H69
Art. 20601 95 x 95 x H69
Art. 20611 120 x 120 x H69
Art. 20602 95 x 95 x H69
Art. 20612 120 x 120 x H69



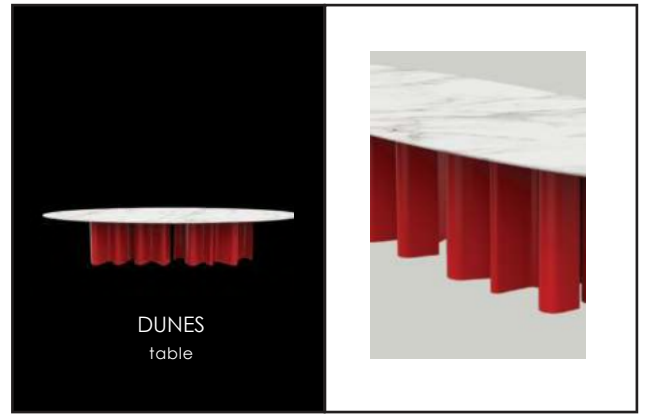
NAPIER SIDEBOARD

Art. 40120 245 x 55 x H70 (2 drawers)
Art. 40121 245 x 55 x H70



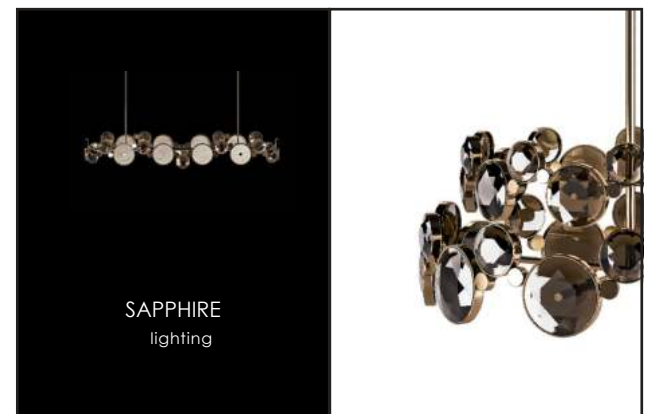
DUNES TABLE

Art. 30110 240 x 110 x H74
Art. 30111 300 x 120 x H74



SAPPHIRE LIGHTING

Art. 60220 140 x 50
Art. 60221 140 x 50 (2 levels)
Art. 60222 140 x 80
Art. 60223 140 x 80 (2 levels)
Art. 60224 140 x 80 (3 levels)
Art. 60225 50 x 17 (Applique)
Art. 60226 standing



VOYAGE ROYAL BED

Art. 50201 340 x 228 x H130
Art. 50202 360 x 228 x H130



PALACE NIGHTSTAND

Art. 30610 diam. 40 x H55



MONOLITH SOFA

Art. 20411	260 x 110 x H80
Art. 20412	260 x 110 x H80
Art. 20413	360 x 118 x H80
Art. 20414	360 x 118 x H80



PEARL LIGHTING

Art. 60201	65 x H103
Art. 60202	65 x H103
Art. 60203	65 x H103
Art. 60204	98 x 90 x H247.2
Art. 60206	46.5 x 14.4 x H50
Art. 60208	64.5 x 40 x H175.5



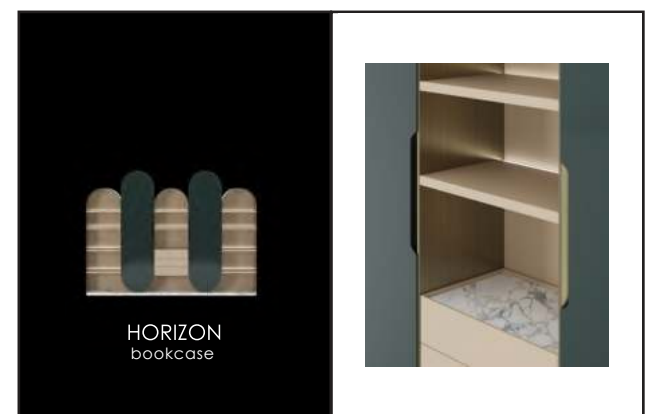
ZENITH LOW TABLES

Art. 30305	58 x 40 x H55
Art. 30306	80 x 70 x H32
Art. 30307	120 x 70 x H32
Art. 30309	58 x 40 x H55



HORIZON BOOKCASE

Art. 40800AL	300 x 220 x H45
Art. 40800MB	180 x 220 x H45
Art. 40810AL	300 x 220 x H45
Art. 40810MB	180 x 220 x H45



LEGACY SOFA

Art. 20101 155 x 110 x H85
Art. 20102 260 x 110 x H85
Art. 20103 365 x 110 x H85



DRIFT NIGHTSTAND

Art. 50201 340 x 228 x H130
Art. 50202 360 x 228 x H130

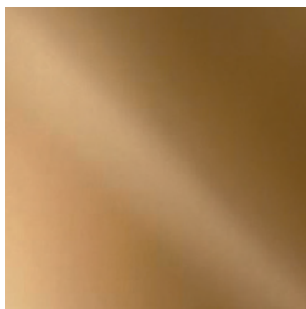




ELIE SAAB

MAISON

METALS / METALLI



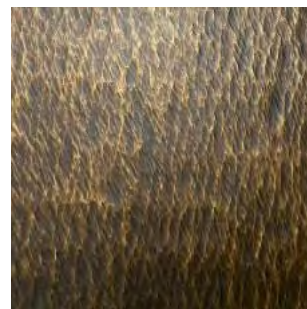
OL
Polished brass
Ottone lucido



OS
Satin brass
Ottone spazzolato



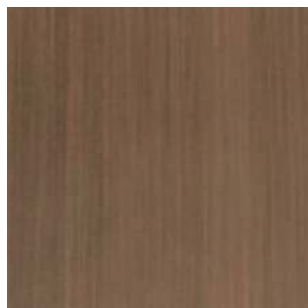
OB
Bronzed brass
Ottone bronzato



OM
Hammered brass
Ottone martellato



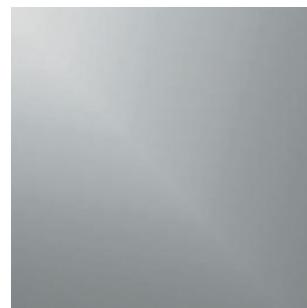
PG
Polished gold
Oro lucido



MB
Bronzed metal
Metallo bronzato



BN
Black nickel
Nichel nero



AL
Polished steel
Acciaio lucido



SB
Sparkling bronze
Bronzo brillante



ML
Liquid metal
Metallo liquido

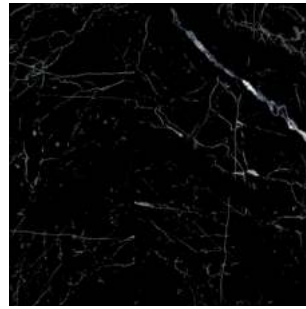


PN
Polished nickel
Nichel lucido

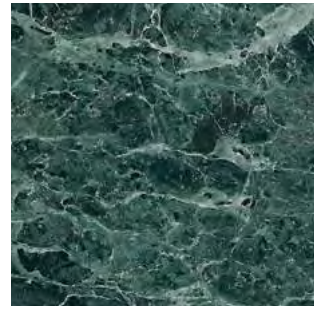
STONES AND MARBLES / MARMI E PIETRE



M 02
Gold calacatta
Calacatta oro



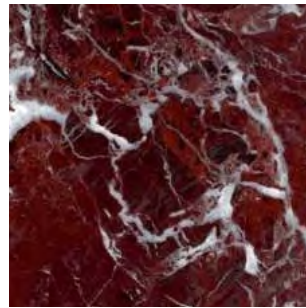
M 05
Nero marquinia
Marquinia black



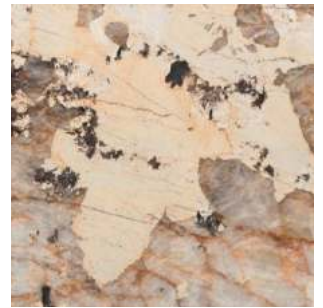
M 03
Alpine green
Verde alpi



M 01
Bianco carrara
Carrara white



M 04
Lepanto red
Rosso Lepanto



M 07
Patagonia granite
Granito Patagonia



M 10
Arabescato vagli
Vagli arabesque

WOODS / LEGNI



01
Matt ebony
Ebano opaco



10
Lacquered ebony
Ebano lucido



20
Polished eucalyptus
Eucalipto lucido



ELIE SAAB

MAISON

Design by Carlo Colombo

The collection ELIE SAAB Maison is manufactured and distributed by Corporate Brand Maison SA. The Company reserves the right to make any necessary modifications for functional and qualitative improvements to the products without prior notification. Pictures of products and samples have a purely indicative value, and colors may vary due to the printing process. Image reproduction in whole or part is strictly prohibited. Copyright © Corporate Brand Maison SA - All rights reserved.

La collezione ELIE SAAB Maison è prodotta e distribuita da Corporate Brand Maison SA. L'Azienda si riserva di apportare, in qualsiasi momento, senza obbligo di preavviso, qualsiasi tipologia di miglioramento tecnologico, estetico e qualitativo ai propri prodotti. Le immagini di prodotti e campioni hanno un valore puramente indicativo, ed i colori possono variare in relazione al processo di stampa. Copyright © Corporate Brand Maison SA - Tutti i diritti riservati.



ELIE SAAB

MAISON

Corporate Brand Maison SA

Via San Gottardo 53
6900 Massagno (Switzerland)
Tel +41 919 100888

www.cbmaison.com
info@cbmaison.com

ELIE SAAB Maison Milan

Via Sant`Andrea 23
20121 Milan (Italy)
+39 02 434 12741
+39 342 571 8517

Le Privé

Via Carlo Maria Martini 1
20122 Milan (Italy)

www.eliesaabmaison.com

IDEAZIONE E COORDINAMENTO
Carlo Colombo Architect