



**ELIE SAAB**

MAISON





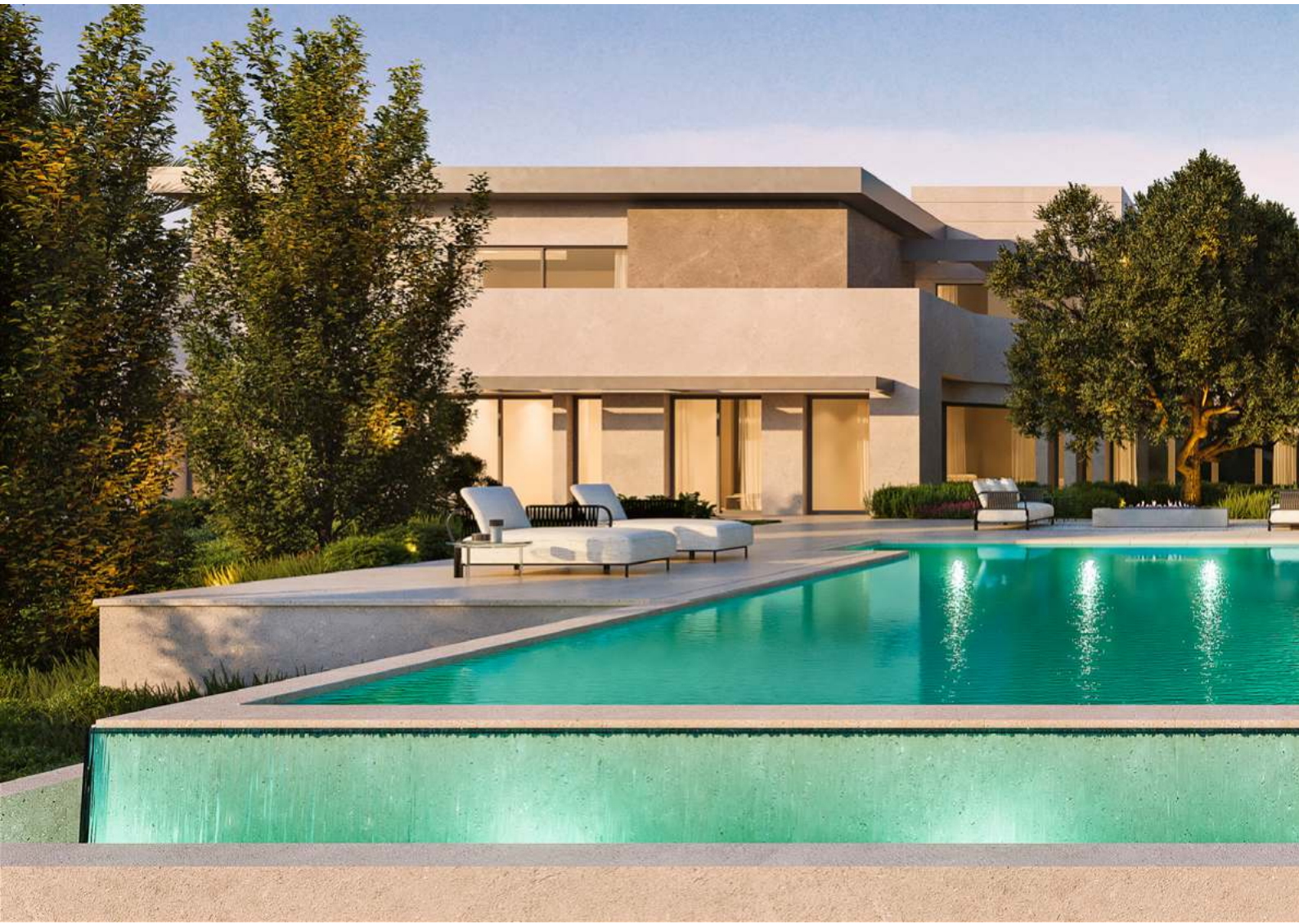
# EHDEN

## Outdoor Collection

A home in which to daydream, enjoying the indoors as well as the outdoors, with the new Ehdén outdoor collection, getting lost in an enchanted forest, in which elegant gardens alternate, whose vegetation is adorned with gems and precious stones. Ehdén is a dream place that actually exists in reality, in the Lebanese mountains, which becomes the ideal place to find solace, simplicity, and be in harmony with nature.

*Una casa in cui sognare a occhi aperti, godendo degli ambienti interni ma anche all'esterno, con la collezione outdoor Ehdén, perdendosi in una foresta incantata, nella quale si alternano eleganti giardini la cui vegetazione è adornata da gemme e pietre preziose. Ehdén è un luogo da sogno che esiste nella realtà, sulle montagne del Libano, che diventa il luogo ideale in cui trovare ristoro, lasciandosi alle spalle la frenesia del quotidiano, alla ricerca di pace e semplicità, in armonia con la natura.*







ELIE SAAB Villas I Marbella











# MADREPERLA

## *Moodboard*

Featuring a glamorous palette of natural Golden and White colors that shimmer with delicate overtones, Madreperla represents luxurious fabrics and marbles. Its iridescent colour scheme creates intriguing nuances of pearl greys, off-white and opaline.

*Caratterizzata da una palette affascinante di colori naturali dorati e bianchi che brillano con toni delicati, Madreperla rappresenta tessuti e marmi lussuosi. La sua combinazione di colori cangianti crea intriganti sfumature di grigio perla, off-white e opalino.*



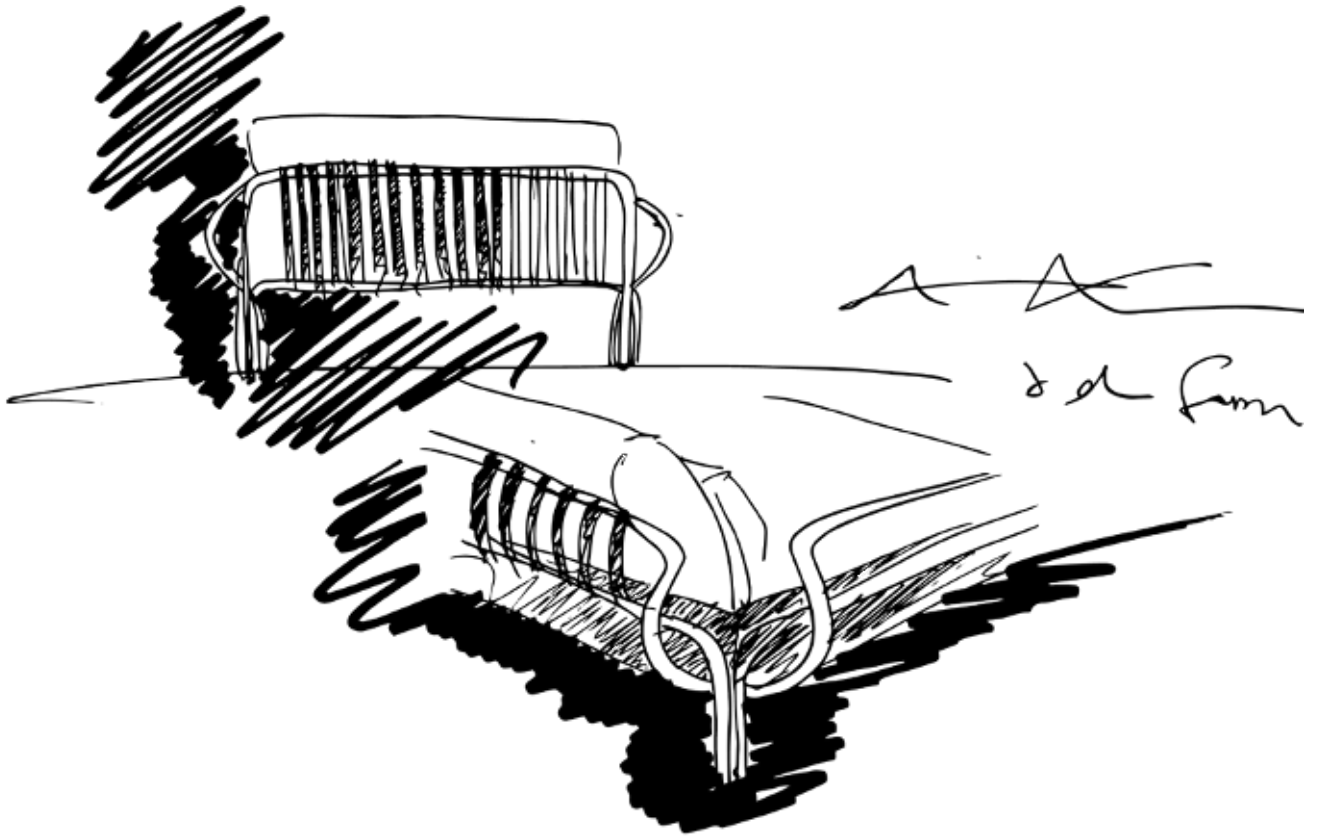












Woven metal frames appear to imitate the sinuous movements of the branches of a centuries-old tree.



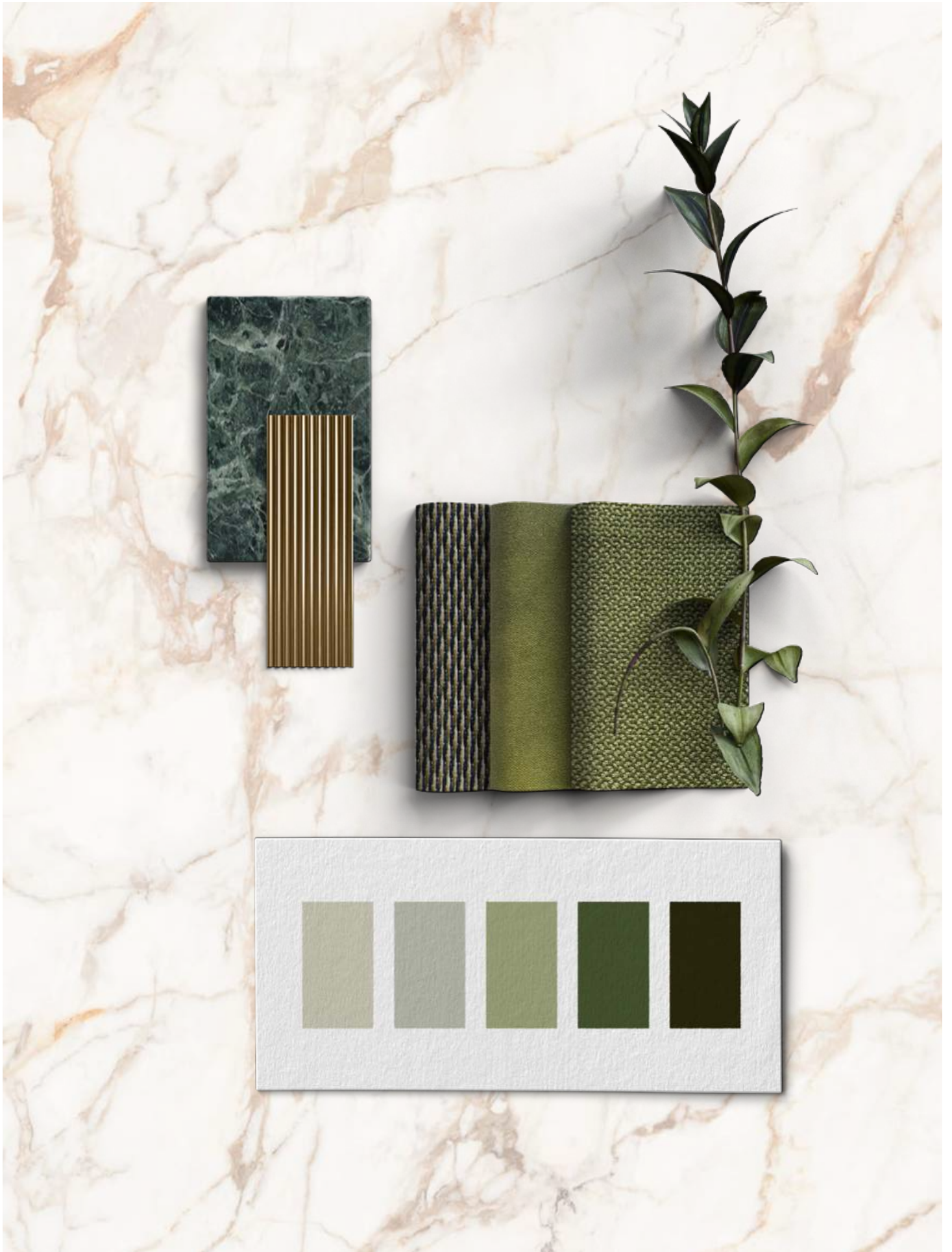


# JUNGLE

## Moodboard

Evoking Harmony and Tranquility, Jungle captures the lush palette of a tropical rainforest. Beautiful and inviting, the striking proposal features opulent marbles and fabrics, rich in tones such as warm green and intense teal.

*Evocando armonia e tranquillità, Jungle cattura la palette lussureggiante di una foresta tropicale. Affascinante e invitante, la suggestiva proposta è caratterizzata da marmi e tessuti opulenti, ricchi di toni come il verde caldo e il verde acqua.*











**ELIE SAAB**

MAISON











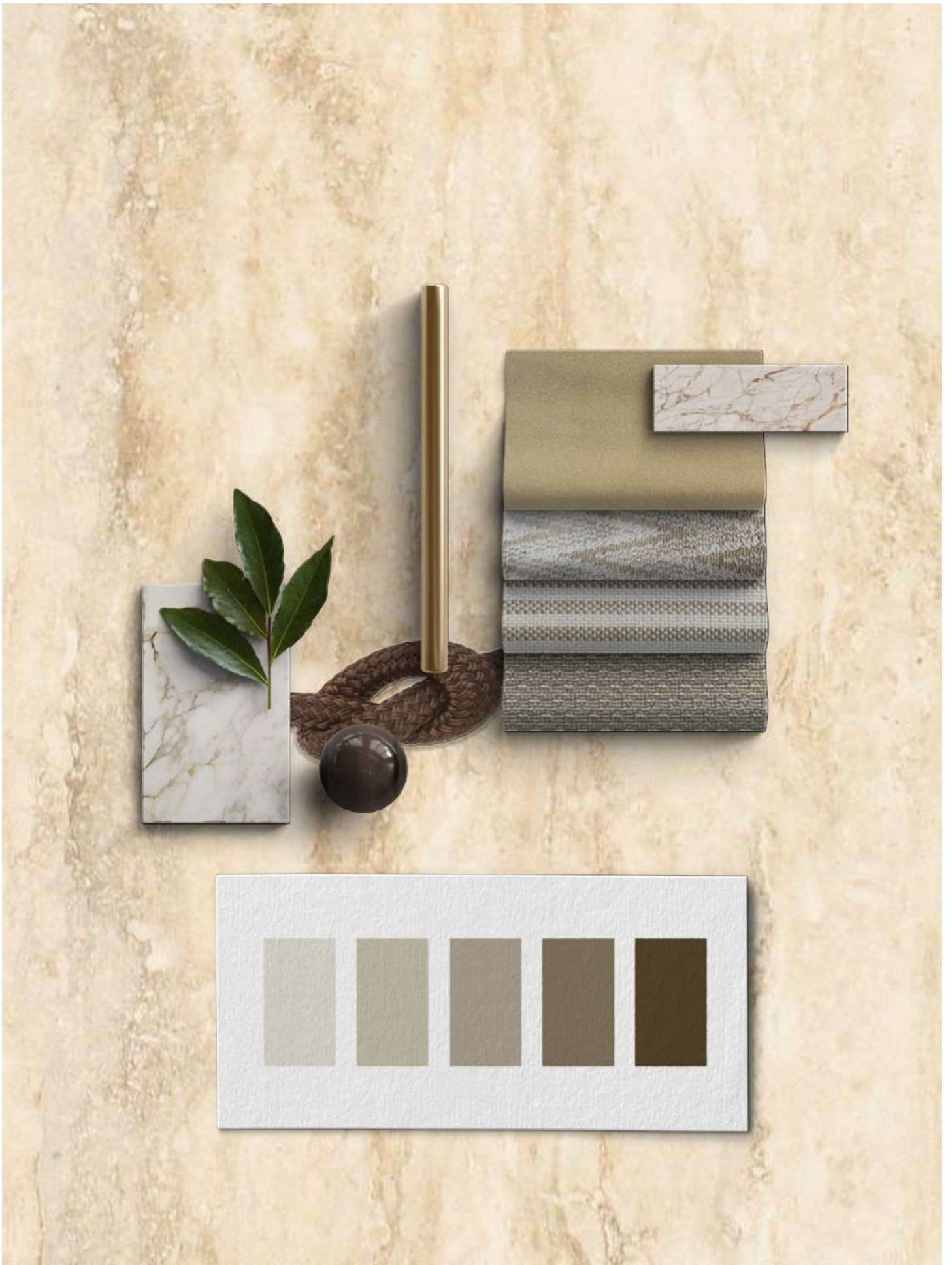
# SABLE

## Moodboard

Sophisticated and timeless, Sable is able to illuminate and maximize living spaces, balancing modernity and tradition while maintaining a harmonious colour palette. Luxuriant yet elegant, its sunny colour palette with golden touches transmits energy and beauty. Sable proposes a variety of shades, balancing itself between ochers and grays, ranging from clear, bright to intense or saturated.

*Sofisticata e senza tempo, Sable è in grado di illuminare e valorizzare gli spazi abitativi, bilanciando modernità e tradizione e mantenendo un'armoniosa palette di colori. Lussuosa ma nello stesso tempo elegante, la sua palette di colori solari con tocchi dorati trasmette energia e bellezza. Sable propone una varietà di tonalità, in equilibrio tra ocre e grigi, che vanno da chiare e luminose a intense e sature.*











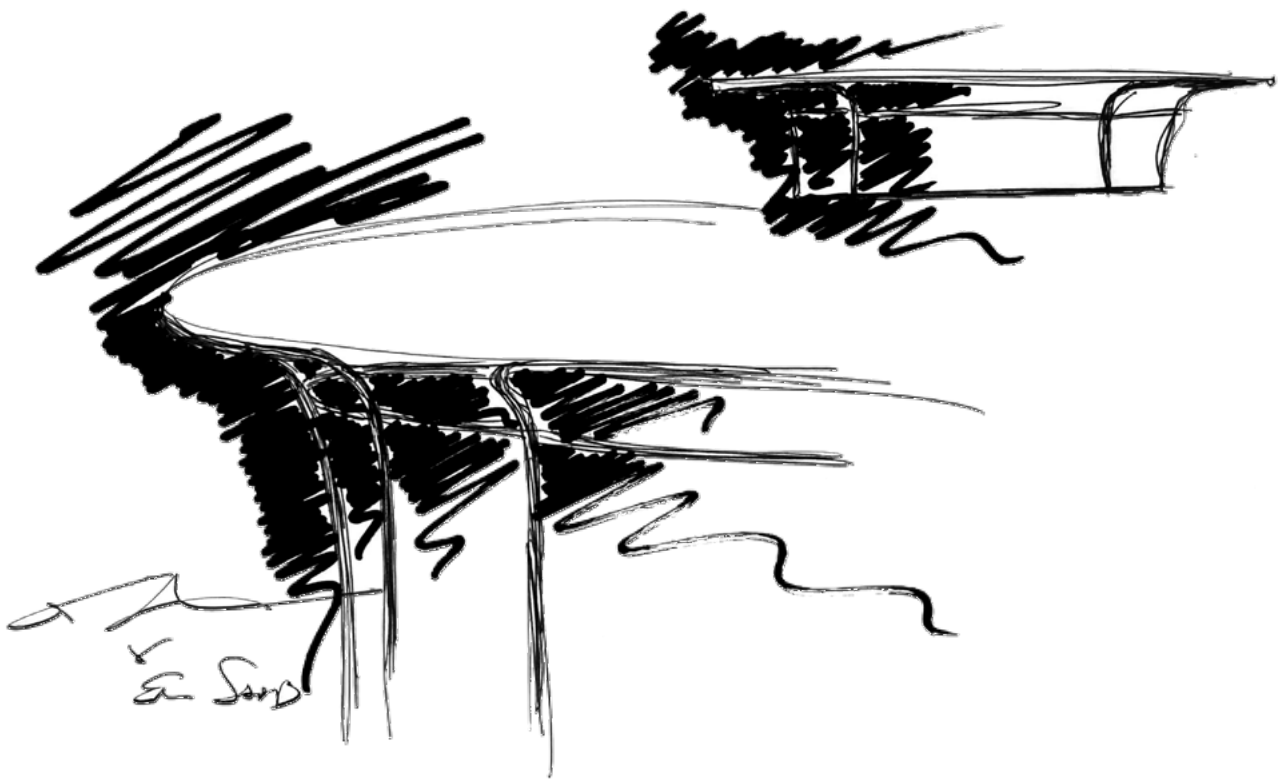
**ELIE SAAB**

MAISON











A sculp-  
tural base  
carefully  
crafted by  
artisans  
creating  
a striking  
silhouette.



**ELIE SAAB**

MAISON











Les Vagues | ELIE SAAB Doha

# ATLANTIQUE

## Moodboard

Atlantique takes you on a whimsical voyage through the deep, darkened and oceanic shades of blue. Mysterious with a slight touch of white, the tones reflect the vast exploration of the unknown onto a steady path to new discoveries. Luxuriant yet elegant, the materials and finishings of Atlantique are proposed in many shades of blue, from indigo to midnight blue to navy.

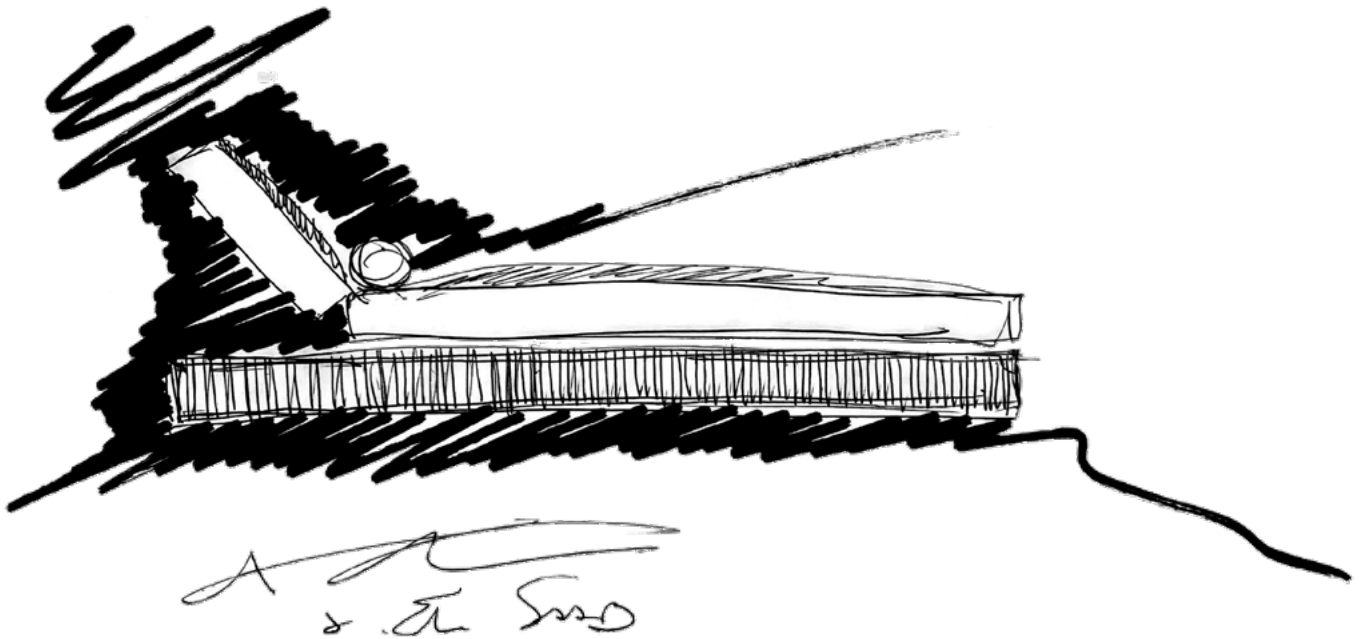
*Atlantique vi porta in un viaggio stravagante attraverso le profonde, oscure e oceaniche sfumature del blu. Misteriose con un leggero tocco di bianco, le tonalità riflettono la vasta esplorazione dell'ignoto su un percorso costante verso nuove scoperte. Lussuosi ed eleganti, i materiali e le finiture di Atlantique sono proposte in diverse tonalità di blu, dall'indaco al blu notte al navy.*











Elements that  
inspire the  
immagination  
with gener-  
ous volumes  
and timeless  
essence.



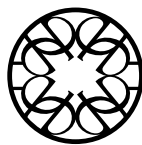








Les Vagues | ELIE SAAB Doha



**ELIE SAAB**

MAISON







Saffire | ELIE SAAB Sao Paulo

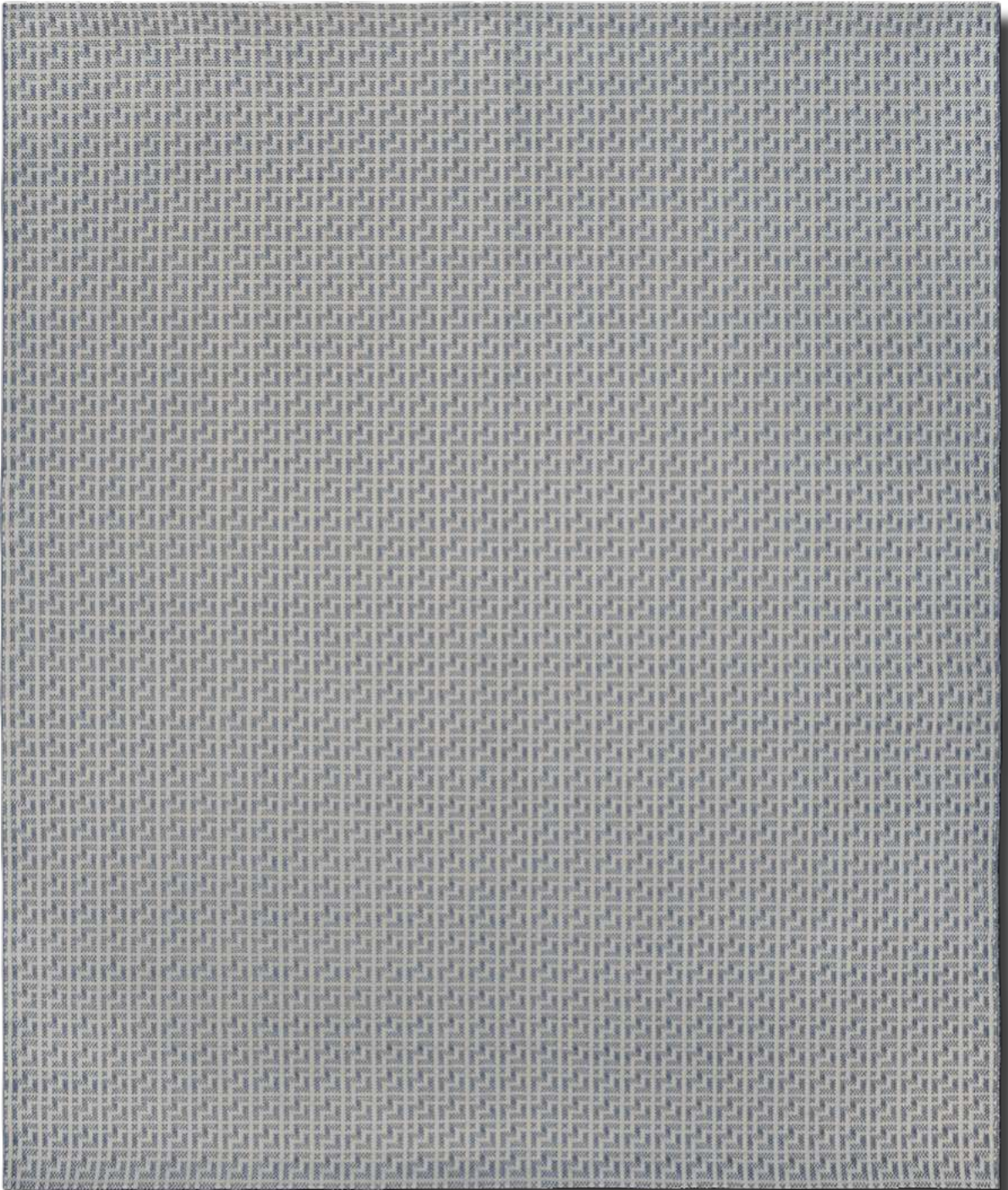


**ELIE SAAB**

MAISON

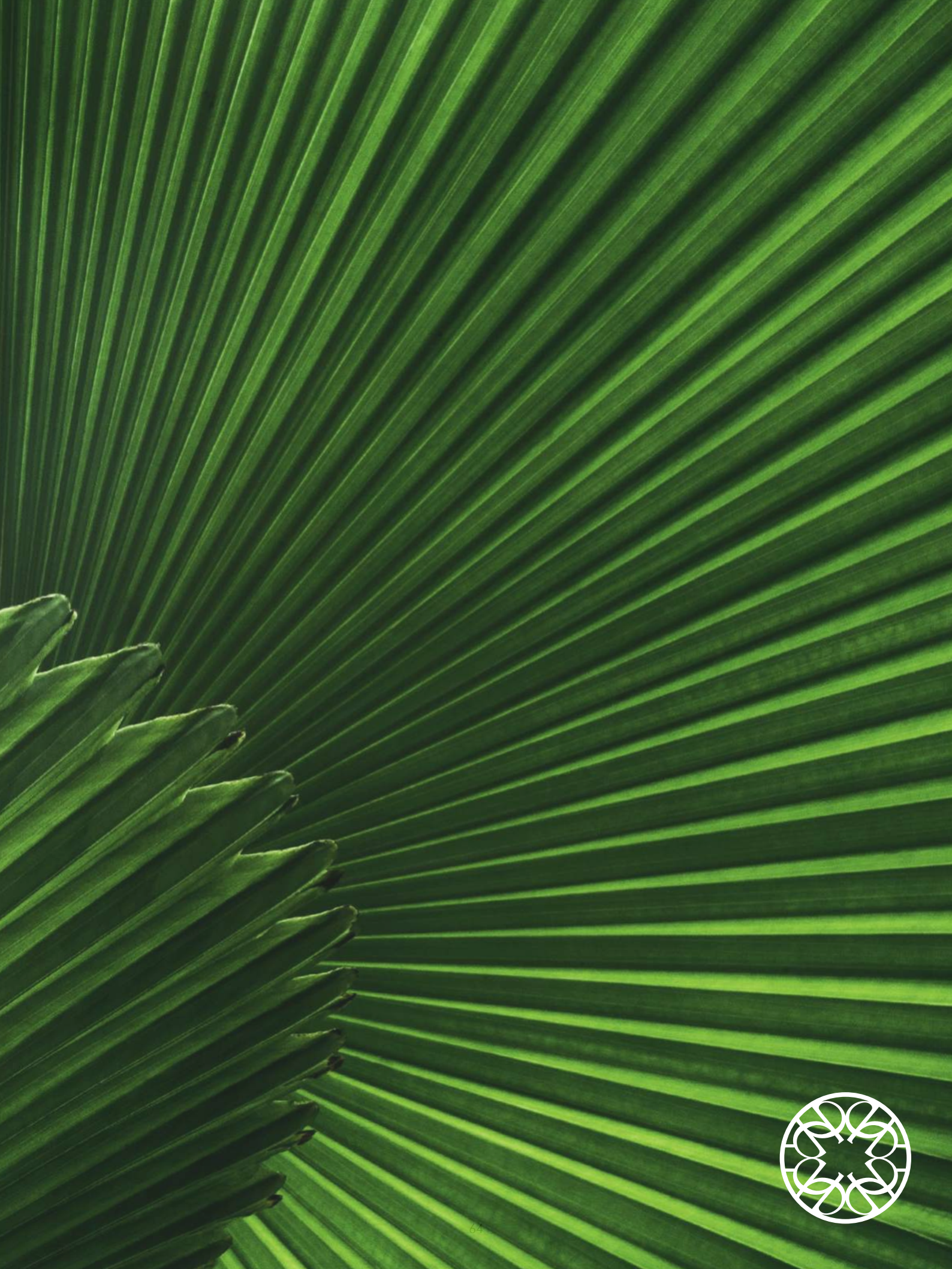
# EHDEN

RUG









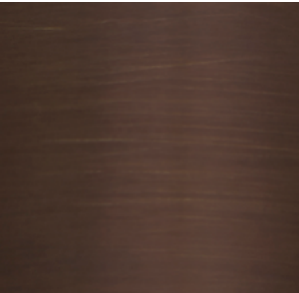
# Materials & finishings

Marbles selected by ELIE SAAB Maison are natural materials and may differ from each other and from the images in the catalogue. Marble tabletops are not protected and they can vary in color tone and stains subject to weathering. Application of stone protectors can be done, taking into consideration the fact that such products may darken the marble colour.

*I marmi selezionati da ELIE SAAB Maison sono materiali naturali e possono differire tra loro e dalle immagini riportate nel catalogo. I piani in marmo non sono protetti e possono variare in tonalità di colore e macchiarsi in relazione agli agenti atmosferici. Prodotti protettivi specifici possono essere applicati periodicamente, tenuto conto del fatto che possono scurire il colore originario del marmo.*



FINISHING /  
*FINITURE*



DARK BRONZE

DETAILS /  
*DETTAGLI*



DARK ROPE

GLASS/  
*VETRO*



WAVY GREY GLASS

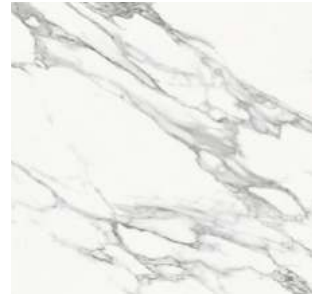
# STONES & MARBLES / MARMI & PIETRE



CALACATTA GOLD



PATAGONIA



ARABESCATO VAGLI



TRAVERTINO



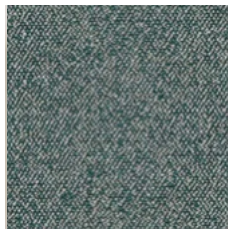
ALPINE GREEN

# Outdoor fabrics

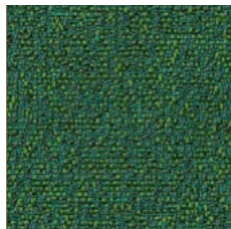


# OUTDOOR FABRICS / TESSUTI OUTDOOR

## ALTAI



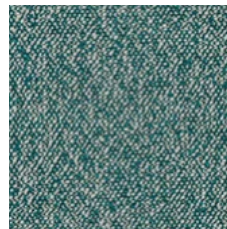
6001  
21/27



6002  
40/11

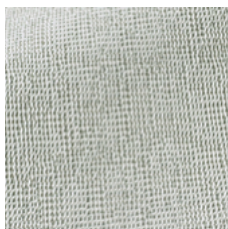


6003  
12/5



6004  
41/28

## BREHAT



6010  
GLACIER



6011  
ECRU

## CROCHET



6020  
AVORIO



6021  
MADREPERLA



6022  
SABBIA

## CROZON



6030  
LIN



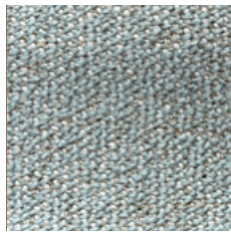
6031  
ECRU



## DELTA



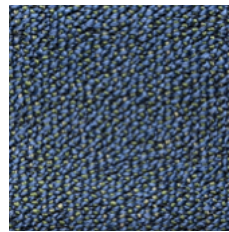
6040  
80



6041  
01/6



6042  
80/1



6043  
15/1

## FABTHIRTY



6050  
BIANCO



6051  
ARGENTO



6052  
SALE E PEPE

## GADJI



6060  
NEIGE



6061  
ARGILE



6062  
MIMOSA

## GOLFE



6070  
BLANC



6071  
ORAGE

# OUTDOOR FABRICS / TESSUTI OUTDOOR

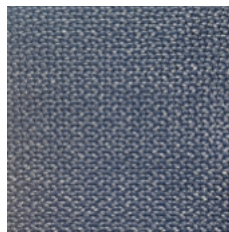
## GUETHARY



6080  
BRUME

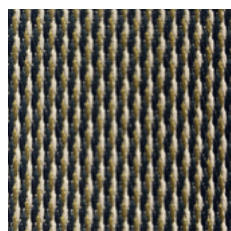


6081  
FORET



6082  
ATLANTIQUE

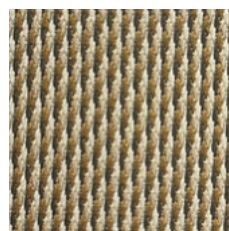
## HONOLULU



6090  
PAON



6091  
CYCLADES

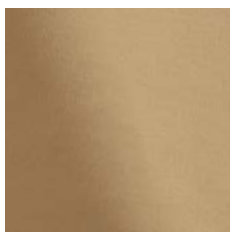


6092  
CAFE AU LAIT

## HYERES



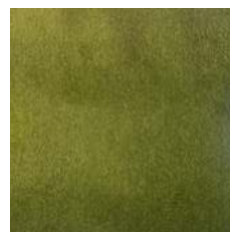
6100  
ECRU



6101  
CHAMOIS



6102  
ORPAILLEUR



6103  
ORTIE



6104  
NUIT

## HUGO



6110  
BIANCO



6111  
AVORIO

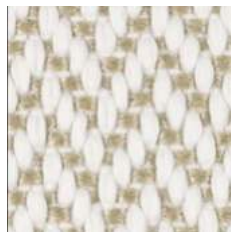


6112  
PIETRA

## IKON



6120  
31



6121  
2/11



6122  
08

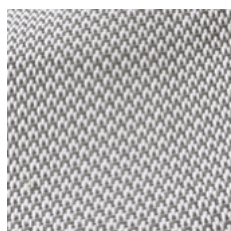


6123  
02/23

## MALBAN



6130  
MASTIC

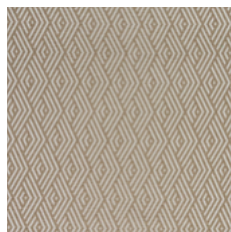


6131  
SOURIS

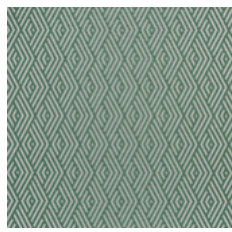
## MANI



6140  
BLANC



6141  
LIN



6142  
ARGILE

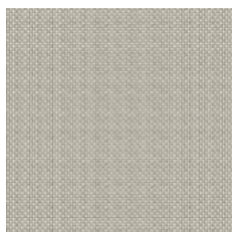
## MARGARITA



6150  
AVORIO



6151  
SABBIA



6152  
ARGENTO



6153  
BOSCO



6154  
LEGNO

# OUTDOOR FABRICS / TESSUTI OUTDOOR

## RONDE



6160  
ECRU

## SUNRISE



6170  
RAPHIA



6171  
BORD DE MER

## TENSTRIPE



6180  
AVORIO



6181  
BEIGE

## TIGA



6190  
NEIGE



6191  
RAPHIA

**VELVETY**



6200  
MADREPERLA



6201  
SABBIA



6202  
ARGILE



6203  
GRIGIO



6204  
GIALLO

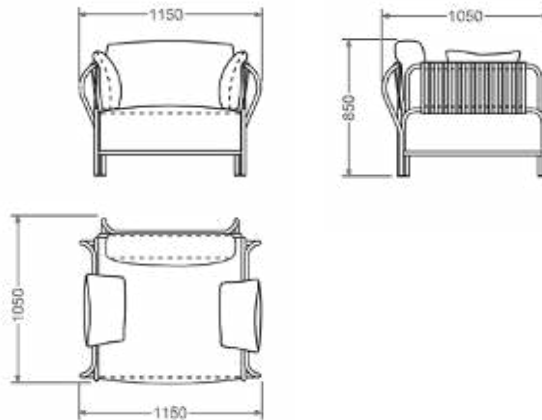
# Technical data



# ARMCHAIR & SOFA / POLTRONA & DIVANO

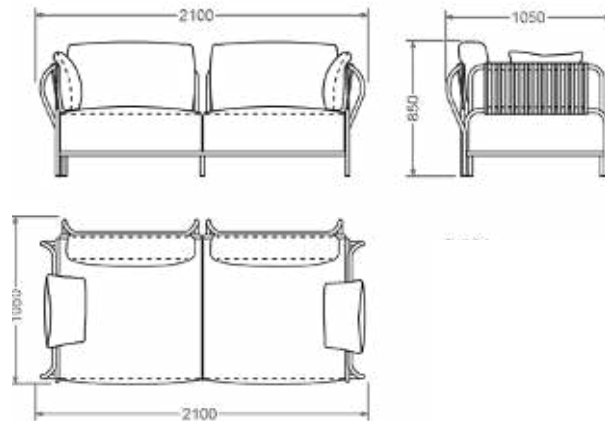
## EHDEN armchair

cod. 90101  
W 115 x 105 x h 85



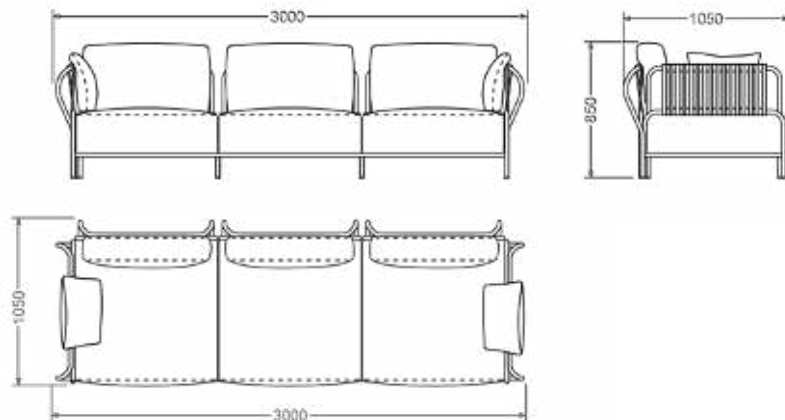
## EHDEN sofa 2 seats

cod. 90102  
W 210 x 105 x h 85



## EHDEN sofa 3 seats

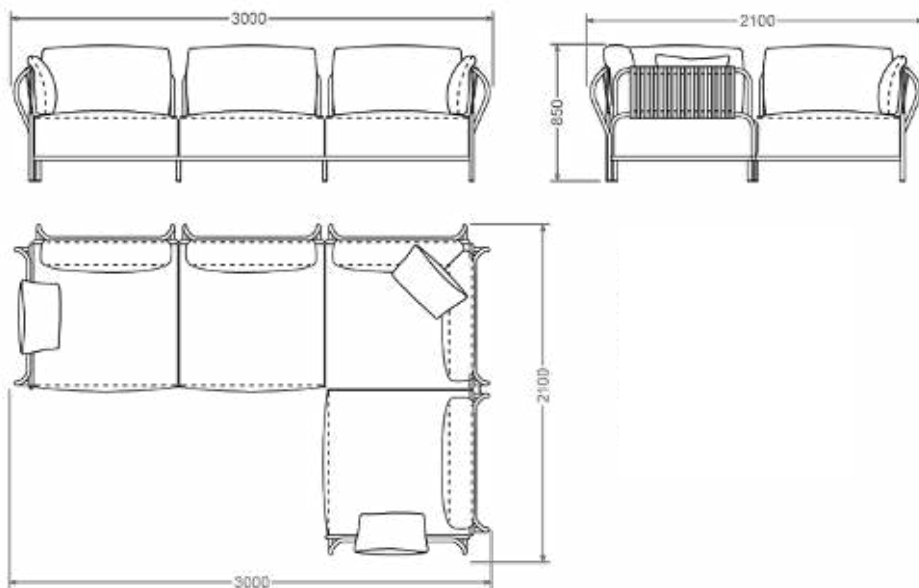
cod. 90103  
W 300 x 105 x h 85





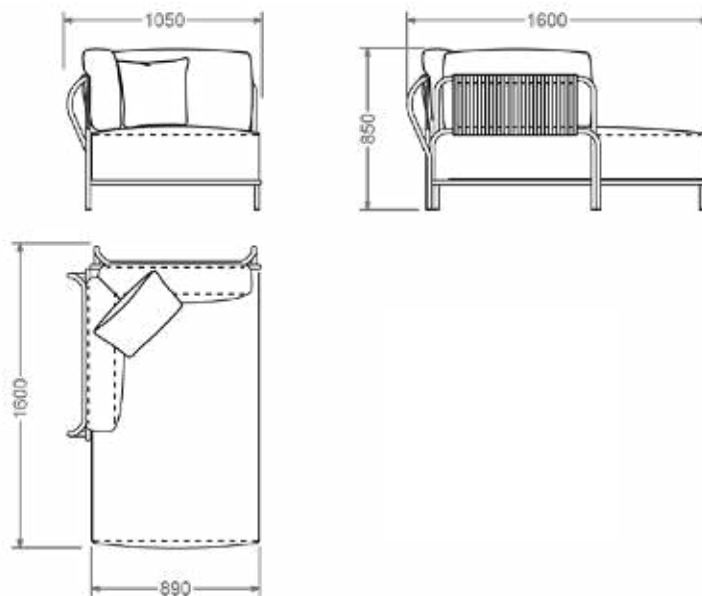
EHDEN sofa  
4 seats

cod. 90104  
W 300 x 210 x h 85



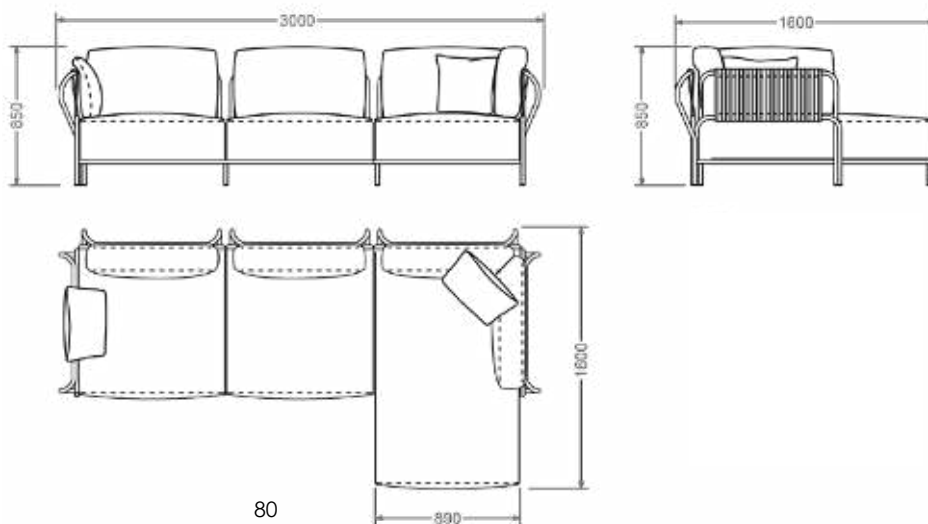
EHDEN chaise longue

dx cod. 90106  
sx cod. 90107  
W 105 x 160 x h 85

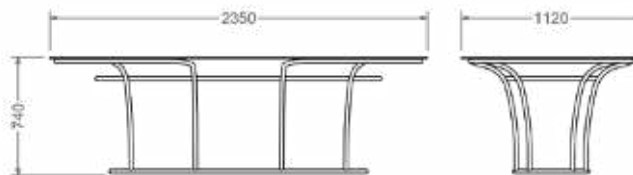


EHDEN sofa  
with chaise longue

cod. 90108  
W 300 x 160 x h 85

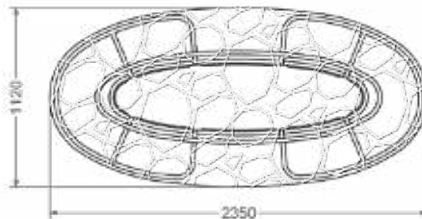


# TABLE / TAVOLO



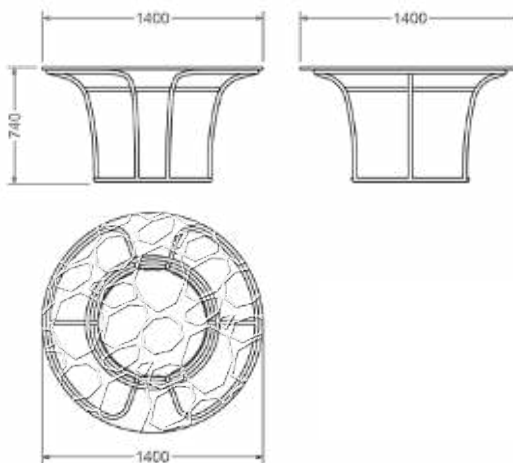
## EHDEN dining table

cod. 90140  
W 235 x 112 x h 74



## EHDEN table

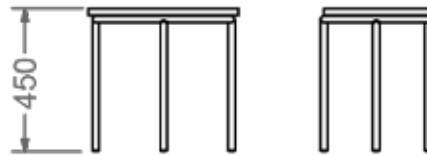
cod. 90141  
diam. 140 x h 74



Fused glass top with special processing to obtain an irregular bronze-toned surface. ATTENTION: this technique does not allow the glass to get tempered, therefore the Company is not responsible for any breakages due to anomalous overloads.

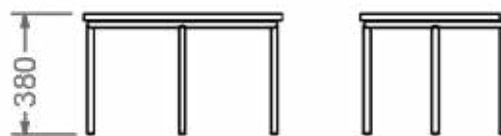
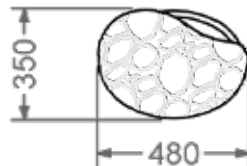
*Piano in vetrofusione con particolare lavorazione per ottenere una superficie irregolare di tonalità bronzo. ATTENZIONE: questa tecnica non consente di operare la successiva tempratura, pertanto non si risponde di eventuali rotture dovute a sovraccarichi anomali.*

# LOW TABLES / TAVOLINI



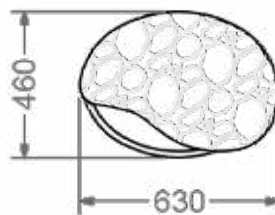
## EHDEN low table

top smoked glass cod. 90120  
top marble cod. 90125  
W 48 x 35 x h 45



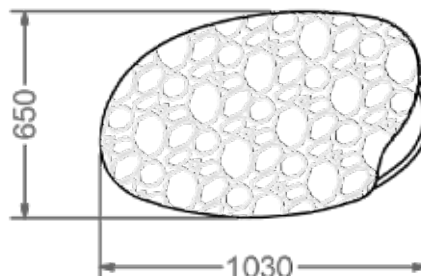
## EHDEN low table

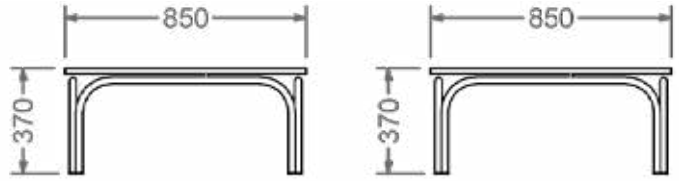
top smoked glass cod. 90121  
top marble cod. 90126  
W 630 x 460 x h 38



## EHDEN low table

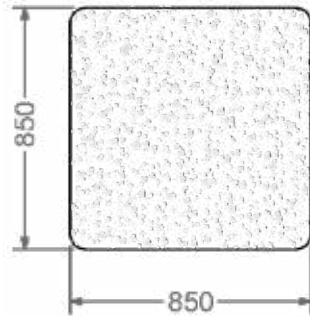
top smoked glass cod. 90122  
top marble cod. 90127  
W 103 x 650 x h 31





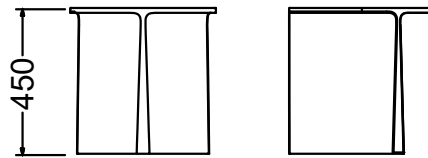
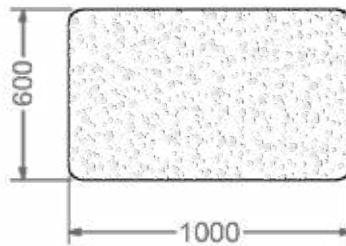
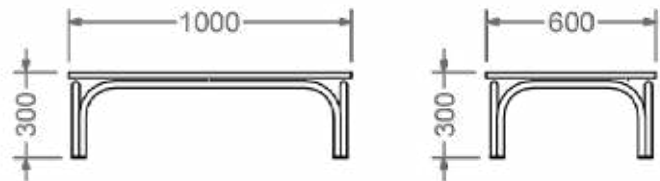
EHDEN low table

cod. 90110  
W 85 x 85 x h 37



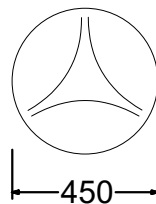
EHDEN low table

cod. 90111  
W 100 x 60 x h 30

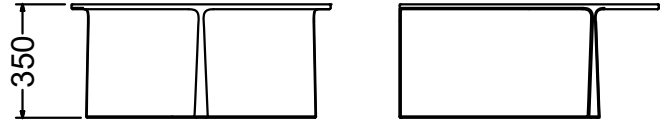


MIRAGE low table

cod. 30610  
diam. 45 x h 45

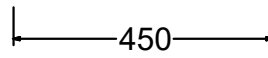
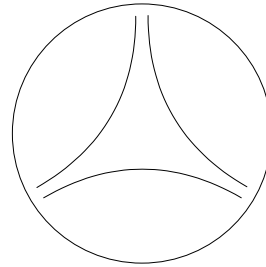


# LOW TABLES / TAVOLINI



MIRAGE low table

cod. 30611  
diam. 80 x h 35



# CHAIR / SEDIA

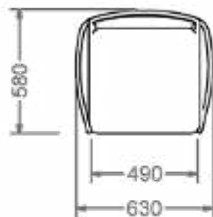


EHDEN chair

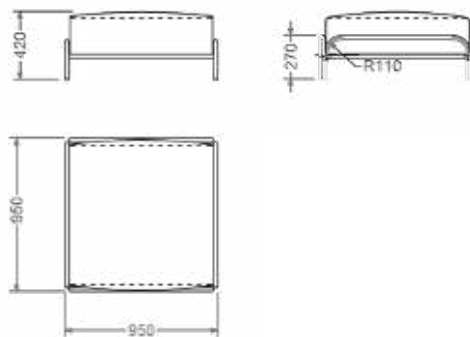
---

cod. 90150  
W 63 x 58 x h 82

---



# POUF / POUF



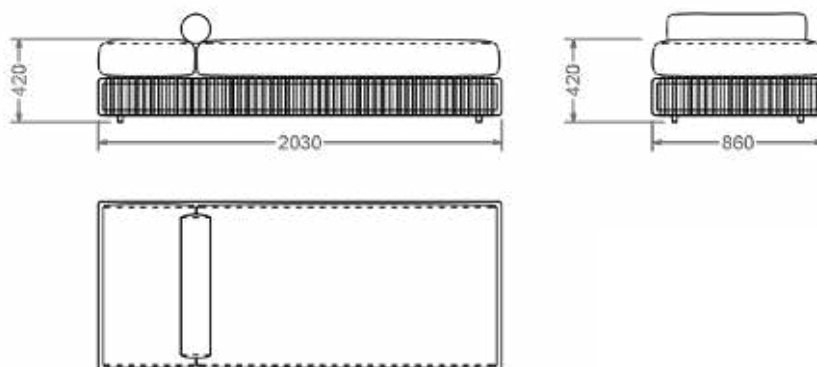
EHDEN pouf

cod. 90105

W 95 x 95 x h 42

---

# SUNBED / LETTINO



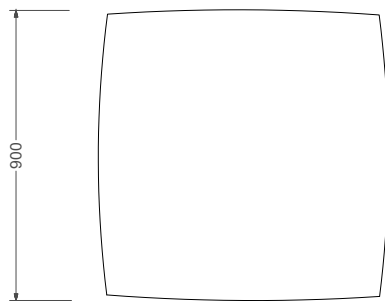
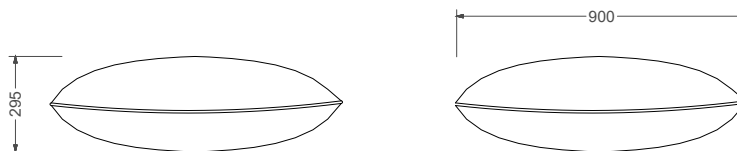
EHDEN sunbed

cod. 90130  
W 203 x 86 x h 42

---

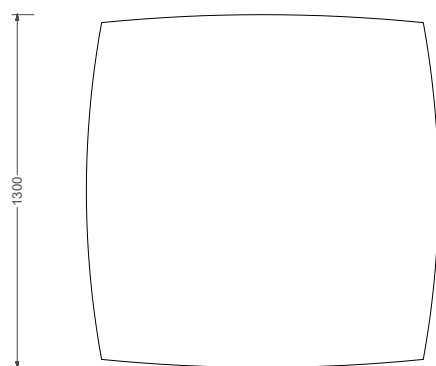
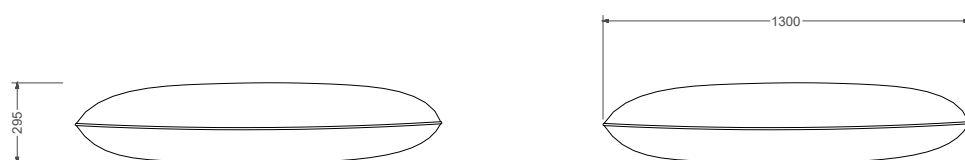


# MAXI PILLOW / CUSCINO MAXI



EHDEN maxi pillow

cod. 90131  
W 90 x 90 x h 29



EHDEN maxi pillow

cod. 90132  
W 130 x 130 x h 29



**ELIE SAAB**

MAISON

Design by Carlo Colombo

The collection ELIESAAB Maison is manufactured and distributed by Corporate Brand Maison SA. The Company reserves the right to make any necessary modifications for functional and qualitative improvements to the products without prior notification. Pictures of products and samples have a purely indicative value, and colors may vary due to the printing process. Image reproduction in whole or part is strictly prohibited. Copyright © Corporate Brand Maison SA - All rights reserved.

La collezione ELIE SAAB Maison è prodotta e distribuita da Corporate Brand Maison SA. L'Azienda si riserva di apportare, in qualsiasi momento, senza obbligo di preavviso, qualsiasi tipologia di miglioramento tecnologico, estetico e qualitativo ai propri prodotti. Le immagini di prodotti e campioni hanno un valore puramente indicativo, ed i colori possono variare in relazione al processo di stampa. Copyright © Corporate Brand Maison SA - Tutti i diritti riservati.



**ELIE SAAB**

MAISON

**Corporate Brand Maison SA**

Via San Gottardo 53  
6900 Massagno (Switzerland)  
Tel +41 919 100888

[www.cbmaison.com](http://www.cbmaison.com)  
[info@cbmaison.com](mailto:info@cbmaison.com)

**ELIE SAAB Maison Milan**

Via Sant`Andrea 23  
20121 Milan (Italy)  
+39 02 434 12741  
+39 342 571 8517

**Le Privé**

Via Carlo Maria Martini 1  
20122 Milan (Italy)

[www.eliesaabmaison.com](http://www.eliesaabmaison.com)

IDEAZIONE E COORDINAMENTO  
Carlo Colombo Architect